

Ethnologue: Languages of Angola

Twenty-sixth edition data

David M. Eberhard, Gary F. Simons, and Charles D. Fennig, Editors

Based on information from the *Ethnologue*, 26th edition:

Eberhard, David M., Gary F. Simons, and Charles D. Fennig (eds.). 2023.
Ethnologue: Languages of the World. Twenty-sixth edition. Dallas, Texas:
SIL International. Online: <http://www.ethnologue.com>.

For personal use only

Permission to distribute or reuse this work (in whole or in part)
may be obtained through the Copyright Clearance Center at
<http://www.copyright.com>.

Contents

List of Abbreviations	3
How to Use This Digest	4
Country Overview	6
Language Status Profile	7
Statistical Summaries	8
Alphabetical Listing of Languages	11
Language Map	22
Languages by Population	23
Languages by Status	27
Languages by Province	32
Languages by Family	34
Language Code Index	38
Language Name Index	39
Bibliography	45

Copyright © 2023 by SIL International

All rights reserved. No part of this publication may be reproduced, redistributed, or transmitted in any form or by any means—electronic, mechanical, photocopying, recording, or otherwise—without the prior written permission of SIL International, with the exception of brief excerpts in articles or reviews.

List of Abbreviations

A	Agent in constituent word order
ACHPR	African Charter on Human Peoples' Rights (1987)
<i>alt.</i>	alternate name for
<i>alt. dial.</i>	alternate dialect name for
AOV	Agent-Object-Verb
C	Consonant in canonical syllable patterns
<i>Class</i>	Language classification
CPPDCE	Convention on the Protection and Promotion of the Diversity of Cultural Expressions (2005)
<i>dial.</i>	primary dialect name for
ICCPR	International Covenant on Civil and Political Rights (1966)
km	kilometer(s)
L1 / L2	first language / second (or other additional) language
<i>Lg Dev</i>	Language development
<i>Lg Use</i>	Language use
m	meter(s)
P	Patient in constituent word order
PARADISEC	Pacific And Regional Archive for Digital Sources In Endangered Cultures
<i>pej.</i>	pejorative
pl.	plural
S	Subject in constituent word order
sg.	singular
SIL	SIL International
<i>Type</i>	Typological information
UBS	United Bible Societies
UNCRPD	United Nations Convention on the Rights of Persons with Disabilities (2006)
UNDESA	United Nations Department of Economic and Social Affairs
UNDRIP	United Nations Declaration on the Rights of Indigenous Peoples (2007)
V	Vowel in canonical syllable patterns

How to Use This Digest

This *Ethnologue* country digest provides an extract of the information about the language situation in Angola that is published in the 26th edition of *Ethnologue: Languages of the World* (see <http://www.ethnologue.com>), including some ways of presenting the information that are not available in the online version. The digest begins with a “Country Overview” (page 6) and “Statistical Summaries” (page 8) of languages and number of speakers by language size, by language status, and by language family.

The “Alphabetical Listing of Languages” (page 11) provides detailed information on the 47 languages listed in the *Ethnologue* for the country of Angola. This includes languages that are indigenous to the country, languages that have developed well-established multigenerational speaker communities after immigrating in the past, and languages that have a significant presence in the country but are not established (that is, not being transmitted to the next generation within the country). A complete language entry has the following form and content:

Primary language name [ISO 639-3 code] (Alternate names). Autonym. *Users*: Country user population. Population stability comment. Population remarks. Monolingual population. Ethnic population. *Location*: Location. *Status*: EGIDS level. Special cases. Language function in country. *Class*: Linguistic classification. Macrolanguage membership. *Dialects*: Dialect names. Intelligibility and dialect relations. Lexical similarity. *Type*: Linguistic typology information. *Lg Use*: Remarks on use of the language. Domains of use. User age range. Language attitudes. Bilingualism remarks. Use as second language. *Lg Dev*: Literacy rates. Literacy remarks. Use in education. Publications and use in media. Revitalization efforts. Language development agencies. *DLS*: Digital support. *Writing*: Scripts used. *Other*: Non-indigenous. General remarks. Religion. *Map*: Map page. *Worldwide*: Total population in all countries. Other countries where used.

See <http://www.ethnologue.com/methodology/#languagePages> for a full description of these information elements. If the autonym contains the “?” character, this indicates a complex non-Roman character that the PDF-creating software we are using is not able to render. We regret the inconvenience.

The “Language Map” (page 22) shows the locations of the listed languages. If the location of a language is given on a map, the *Map* element of the language entry indicates the page number of the map. If the language is identified on a map by name, but that name differs from the primary name in the language entry, the name on the map is given in parentheses. If the language is represented on the map by an index number, rather than by its name, the index number is given following the page number (with a colon as separator).

Many ways of finding languages are provided. “Languages by Population” (page 23) lists the languages in order of their first-language speaker populations. “Languages by Status” (page 27) lists the languages by their level of development or endangerment as measured on EGIDS, the Expanded Graded Intergenerational Disruption Scale (Lewis and Simons 2010). “Languages by

Province” (page 32) lists the top-level administrative subdivisions of Angola and the languages located within each. “Languages by Family” (page 34) lists the languages by their linguistic classifications. “Language Code Index” (page 38) gives an alphabetical listing of all the three-letter codes from ISO 639-3 that are used in this digest to uniquely identify languages. “Language Name Index” (page 39) lists every name that appears in the language listings as a primary or alternate name of a language or dialect. A total of 277 unique names are associated with the 47 languages described in this digest.

Finally, a listing of all the published sources cited within this digest is found in “Bibliography” (page 45). The published sources are cited using standard in-text citations enclosed in parentheses, consisting of the author’s or editor’s surname followed by the year of publication. Unpublished sources including personal communications and unpublished reports are also acknowledged when specific statements or facts are attributed to them. They are identified using in-text citations enclosed in parentheses in which the year of the communication is given first, followed by the source’s first initial and surname. In such a case, there is no corresponding entry in the bibliography.

This digest is designed for use in both digital and print formats. The cross-references are thus rendered as page numbers that are hyperlinks. When using the document in printed form, simply turn to the referenced page by number. When using it in digital form, click on the blue text to jump to the cross-referenced location.

If you believe any of the information about a language in this digest is in error or if you are able to supply missing information, please send your proposed change to the editor using one of the means given below. Provide as much information as possible about the source of your information. Full bibliographic details of published sources are especially helpful.

The preferred method of submitting corrections and additions is to join our Contributor Program by applying at <http://www.ethnologue.com/contributor-program>. With a contributor account you will be entitled to complimentary access to the website and will be able to use the Contribute tab on the page for a language or country in order to propose corrections and additions. The advantage of giving feedback in this way is that it becomes part of the public record on the website. You will also be automatically notified of the editorial action.

Alternatively, you may submit corrections and additions by e-mail to:

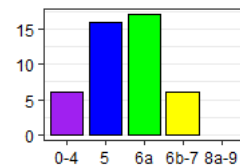
Ethnologue_Editor@sil.org

Or by post to:

Editor, Ethnologue
SIL International
7500 West Camp Wisdom Road
Dallas, TX 75236, U.S.A.

Country Overview

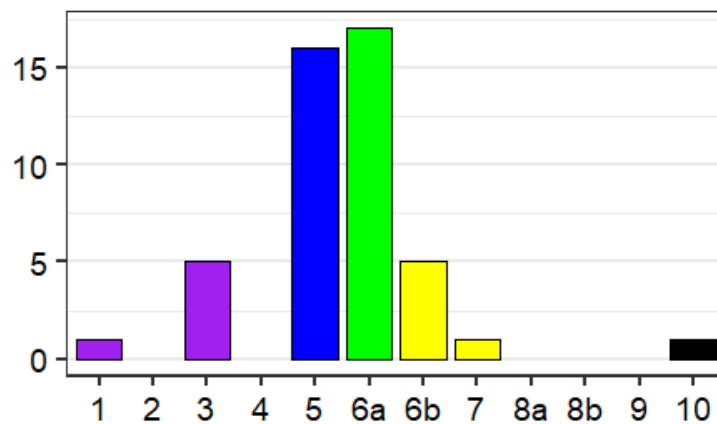
Name of country	Angola
Other names	Republic of Angola
Population	33,937,000 (2021 UNDESA)
Comments	Cabinda province is an enclave separated from Angola by the Kongo-Central province of the Democratic Republic of Congo, and the Congo Republic department of Pointe-Noire.
Principal language	Portuguese
Literacy rate	71% (2015 World Factbook)
International conventions	ACHPR (1990), CPPDCE (2012), ICCPR (1992), UNCRPD (2014), UNDRIP (2007)
General references	Bendor-Samuel and Hartell 1989, Fernandes and Ntondo 2002, Redinha 1970, Welmers 1971a
Language counts	<p>The number of established languages listed for Angola is 46. Of these, 45 are living and 1 is extinct. Of the living languages, 41 are indigenous and 4 are non-indigenous. Furthermore, 6 are institutional, 16 are developing, 17 are vigorous, and 6 are in trouble. Also listed is 1 unestablished language.</p>



See the next page for an explanation of the summary categories for language vitality used in the above counts and graph.

Language Status Profile

The following histogram gives a graphic profile of the established languages in Angola with respect to their status of language development versus language endangerment. This includes all of the languages appearing in the “Alphabetical Listing of Languages” (page 11) that report an EGIDS level after *Status*; macrolanguages and unestablished languages are not included in the profile. The horizontal axis plots the estimated level of development or endangerment as measured on the EGIDS scale (Lewis and Simons 2010). The height of each bar indicates the number of languages that are estimated to be at the given level. Consult “Languages by Status” (page 27) in order to see the specific languages for each level.



The color coding of the bars in the histogram above matches the color scheme used in the summary profile graph on the preceding page. In this scheme, the EGIDS levels are grouped as follows:

- Purple = Institutional (EGIDS 0–4) — The language has been developed to the point that it is used and sustained by institutions beyond the home and community.
- Blue = Developing (EGIDS 5) — The language is in vigorous use, with literature in a standardized form being used by some though this is not yet widespread or sustainable.
- Green = Vigorous (EGIDS 6a) — The language is in vigorous use among all generations and remains unstandardized.
- Yellow = In trouble (EGIDS 6b–7) — Intergenerational transmission is in the process of being broken, but the child-bearing generation can still use the language so it is possible that revitalization efforts could restore transmission of the language in the home.
- Red = Dying (EGIDS 8a–9) — The only fluent users (if any) are older than child-bearing age, so it is too late to restore natural intergenerational transmission through the home; a mechanism outside the home would need to be developed.
- Black = Extinct (EGIDS 10) — The language is no longer used and no one retains a sense of ethnic identity associated with the language.

Statistical Summaries

The “Alphabetical Listing of Languages” (page 11) provides a detailed listing of all the languages of Angola. This section steps back from the detail to offer a summary view of the language situation in the country. Specifically, it offers three numerical tabulations of the living established languages of Angola and their users: by language size, by language status, and by language family.

Summary by language size

Table 1 summarizes the distribution of living established languages in Angola by number of L1 speakers. The *Population range* column categorizes the sizes of the languages by order of magnitude (in terms of the number of digits in the population of first-language speakers). Consult “Languages by Population” (page 23) for a listing of the specific languages in each range category.

The *Count* column gives the number of living established languages within the specified population range. The *Percent* column gives the share of the count for that population range as a percentage of the total number of languages given at the bottom of the Count column. The *Cumulative* column gives the cumulative sum of the percentage of languages going from top to bottom in the column.

The *Total* column gives the total L1 population of all the languages in the given range category. The second *Percent* column gives the percentage of the total country population as estimated at the bottom of the Total column. Note that if the table has a row for Unknown, representing languages for which the *Ethnologue* does not have a population estimate, the calculation of population percentage is not able to take those languages into account. The final *Cumulative* column gives the cumulative sums of the population percentages going from top to bottom in the column.

Table 1: Distribution of languages by number of first-language speakers

Population range	Living languages			Number of speakers		
	Count	Percent	Cumulative	Total	Percent	Cumulative
10,000,000 to 99,999,999	1	2.2	2.2%	13,600,000	37.48806	37.48806%
1,000,000 to 9,999,999	6	13.3	15.6%	17,220,000	47.46650	84.95455%
100,000 to 999,999	11	24.4	40.0%	4,818,000	13.28070	98.23525%
10,000 to 99,999	17	37.8	77.8%	598,600	1.65003	99.88528%
1,000 to 9,999	7	15.6	93.3%	40,520	0.11169	99.99697%
100 to 999	2	4.4	97.8%	1,100	0.00303	100.00000%
Unknown	1	2.2	100.0%			
<i>Totals</i>	45	100.0		36,278,220	100.00000	

Summary by language status

Table 2 summarizes the distribution of living established languages in Angola by their status in terms of language development or language endangerment. The *EGIDS* column categorizes the languages by their level on the EGIDS scale. Consult “Languages by Status” (page 27) for a listing of the specific languages that have been assigned to each level. Note that the EGIDS level reported here is for the status of the language in Angola. Languages that are also used in other countries may be assigned to a different EGIDS level in those countries.

The next six columns are as in Table 1. In addition, the *Mean* column gives the average L1 population of all the languages with the given EGIDS level and the *Median* column gives the median L1 population for the languages at that level, that is, half of the languages at that level have a higher population and half have a lower population. If there are any languages with an unknown population, these are ignored in the calculation of the mean and the median.

Table 2: Distribution of languages by vitality status

EGIDS	Living languages			Number of speakers			Mean	Median
	Count	Percent	Cumulative	Total	Percent	Cumulative		
1	1	2.2	2.2%	13,600,000	37.4881	37.4881%	13,600,000	13,600,000
3	5	11.1	13.3%	15,801,000	43.5551	81.0431%	3,160,200	2,210,000
5	16	35.6	48.9%	4,625,530	12.7502	93.7933%	289,096	116,750
6a	17	37.8	86.7%	1,713,980	4.7245	98.5178%	100,822	22,700
6b	5	11.1	97.8%	537,510	1.4816	99.9994%	107,502	9,200
7	1	2.2	100.0%	200	0.0006	100.0000%	200	200
<i>Totals</i>	45	100.0		36,278,220	100.0000			

Summary by language family

The genealogical classifications given in the language entries of the “Alphabetical Listing of Languages” (page 11) name 4 different top-level groups. Table 3 summarizes the distribution of living established languages and their L1 populations within these families. The columns are as for table 2, with the exception that *Cumulative* is excluded since there is no inherent ordering of the families.

Table 3: Distribution of languages by language family

Language family	Living languages		Number of speakers			
	Count	Percent	Total	Percent	Mean	Median
Indo-European	1	2.2	13,600,000	37.5	13,600,000	13,600,000

Language family	Living languages		Number of speakers			
	<i>Count</i>	<i>Percent</i>	<i>Total</i>	<i>Percent</i>	<i>Mean</i>	<i>Median</i>
Khoe-Kwadi	1	2.2	200	0.0	200	200
Kx'a	2	4.4	14,700	0.0	7,350	7,350
Niger-Congo	41	91.1	22,663,320	62.5	552,764	55,000
<i>Totals</i>	45	100.0	36,278,220	100.0		

Alphabetical Listing of Languages

- Chokwe** [cjk] (Ciokwe, Djok, Kioko, Quioco, Shioko, Tchokwé, Tschiockloe, Tshokwe, Ucokwe). Autonym: Cokwe. *Users*: 2,210,000 in Angola (2021). *Location*: Widespread. East Bié, Cunene, central Kuando Kubango, Lunda Norte, Lunda Sul, Malanje, and west Moxico provinces. *Status*: 3 (Wider communication). De facto language of national identity. In 20th century, began to spread in many different ethnic groups in southern Congo and northeastern Angola. Used in trade, fishing, craftsmanship, hunting, farming, and cattle raising. *Class*: Niger-Congo, Atlantic-Congo, Volta-Congo, Benue-Congo, Bantoid, Southern, Narrow Bantu, Central, K, Ciokwe-Luchazi (K.11). *Dialects*: Minungo, Ulanda. *Lg Use*: Home, church, commerce. Used by all. Positive attitudes. Many also use Portuguese [por]. *Lg Dev*: Literacy rate in L1: Below 30%. Taught as subject in primary schools in grades 1–6 in the eastern provinces. Literature. Radio. Videos. Dictionary. Grammar. Texts. Bible: 1970–1990. *DLS*: Emerging (0.11). *Writing*: Latin script. *Other*: Christian, traditional religion. *Map*: 22:15. *Worldwide*: Total users in all countries: 2,731,700. Also indigenous in: Democratic Republic of the Congo. Also established in: Zambia.
- Dhimba** [dhm] (Chimba, Dimba, Oluthimba, Oluzimba, Otjidhimba, Ovazimba, Simba, Tjimba, Zemba). Autonym: Oludhimba. *Users*: 18,000 in Angola (2011). *Location*: Cunene and Huíla provinces: near Namibia border. *Status*: 5 (Developing). *Class*: Niger-Congo, Atlantic-Congo, Volta-Congo, Benue-Congo, Bantoid, Southern, Narrow Bantu, Central, R, Herero (R.311). *Dialects*: Hakawona, Tchavikwa. *Lg Use*: Used by all. *Lg Dev*: Texts. NT: 2013. *DLS*: Emerging (0.01). *Writing*: Latin script. *Other*: Dhimba is part of the southern Helelo (Herero) cluster. *Map*: 22:34. *Worldwide*: Total users in all countries: 25,300. Also indigenous in: Namibia (Zemba).
- Gciriku** [diu] (Dciriku, Dirico, Diriko, Diriku, Manyo, Mbogedo, Rugciriku, Rumanyo, Shimbogedu). Autonym: Rumanyo. *Users*: 24,000 in Angola. *Location*: Kuando Kubango province: Diriku municipality; southeast border with Namibia. *Status*: 5* (Dispersed). *Class*: Niger-Congo, Atlantic-Congo, Volta-Congo, Benue-Congo, Bantoid, Southern, Narrow Bantu, Central, K, Luyana (K.332). *Lg Use*: Positive attitudes. *Lg Dev*: Literature. Radio. Dictionary. Grammar. NT: 1988. *Writing*: Latin script. *Map*: 22:42. *Worldwide*: Total users in all countries: 81,700. Global EGIDS level: 4 (Educational). Also indigenous in: Botswana, Namibia.
- Himba** [her] (Herero, Otjihimba). Autonym: Otjiherero. *Users*: 20,000 in Angola (2018 L. Jordan). *Location*: Cunene province: Cahama and Curoca municipalities; Namibe province: Tombua municipality. *Status*: 6a (Vigorous). *Class*: Niger-Congo, Atlantic-Congo, Volta-Congo, Benue-Congo, Bantoid, Southern, Narrow Bantu, Central, R, Herero (R.30). *Lg Use*: Used by all. *Lg Dev*: Literature. Dictionary. Grammar. Bible: 1987. *Writing*: Latin script. *Map*: 22:35. *Worldwide*: Total users in all countries: 248,700. Global EGIDS level: 4 (Educational). Also indigenous in: Botswana (Herero), Namibia (Herero).

Holu [hol] (Holo, Hongu, Kiholo, Kiholu). *Users*: 23,100 in Angola (2000). *Location*: Northwest Lunda Norte and northeast Malanje provinces: Kwango river area. *Status*: 6a* (Vigorous). *Class*: Niger-Congo, Atlantic-Congo, Volta-Congo, Benue-Congo, Bantoid, Southern, Narrow Bantu, Central, L, Pende (L.12). *Dialects*: Holu, Yeci. Reportedly similar to Samba [smx]. Yeci may be a separate language. Reportedly related to Kimbundu [kmb]. *Lg Dev*: Bible portions: 1943–1956. *DLS*: Still. *Writing*: Latin script. *Other*: Different from Holoholo [hoo] of Democratic Republic of the Congo. *Map*: 22:10. *Worldwide*: Total users in all countries: 28,200. Also indigenous in: Democratic Republic of the Congo.

Hungu [hng] (Bahungu, Dihungu, Kihungu). *Users*: 500,000 (2018 L. Jordan). Ethnic population: 800,000 (2018 L. Jordan). *Location*: Bengo province, east; Kuanza Sul province, north; Uíge province, south. *Status*: 6b (Threatened). *Class*: Niger-Congo, Atlantic-Congo, Volta-Congo, Benue-Congo, Bantoid, Southern, Narrow Bantu, Central, H, Yaka (H.32). *Dialects*: None known. Most closely related to Kikongo [kng]. *Lg Use*: Some young people, all adults. *DLS*: Still. *Writing*: Unwritten. *Map*: 22:4.

Kabuverdianu [kea]. Autonym: Kabuverdianu, Kriol. *Users*: 65,000 in Angola (2015 Instituto de Apoio ao Emigrante). *Status*: Unestablished. *Class*: Creole, Portuguese based. *Lg Use*: Most also use Portuguese [por]. *Lg Dev*: Literature. Newspapers. Periodicals. Radio. TV. Videos. Dictionary. Grammar. Texts. Bible portions: 2004–2013. *Writing*: Latin script. *Other*: Non-indigenous. *Worldwide*: Total users in all countries: 1,195,500 (as L1: 1,181,500; as L2: 14,000). Global EGIDS level: 3 (Wider communication). Indigenous in: Cape Verde Islands. Also established in: Portugal, São Tomé e Príncipe, United States. Unestablished in: Argentina, Brazil, Canada, France, Gabon, Germany, Guinea-Bissau, Italy, Luxembourg, Mozambique, Netherlands, Senegal, Spain, Sweden, Switzerland.

Khongo [lwa] (Lwalu, Ukhongo). *Users*: 20,000 in Angola (2018 L. Jordan). *Location*: Lunda Norte province: Cambulo municipality. *Status*: 6a (Vigorous). *Class*: Niger-Congo, Atlantic-Congo, Volta-Congo, Benue-Congo, Bantoid, Southern, Narrow Bantu, Central, L, Songe (L.221). *Lg Use*: Vigorous. Used by all. *Map*: 22:14. *Worldwide*: Total users in all countries: 41,000. Also indigenous in: Democratic Republic of the Congo (Lwalu).

Khwedam [xuu] (!Hukwe, Black Bushman, Cazama, Glanda-Khwe, Hukwe, Khwe, Kxoe, Kxoedam, Schekere, Vazama, Water Bushmen, Xu, Xuhwe, Xun, Zama, “Mbarakwena” *pej.*, “Mbarakwengo” *pej.*). Autonym: Khwedam. *Users*: 200 in Angola (Brenzinger 2013b). *Location*: Kuando Kubango province: Huthembo, northeast of Likuwa; Lukanga, west of Rivungu. *Status*: 7 (Shifting). *Class*: Khoe-Kwadi, Khoe, Kalahari Khoe, Northwest. *Dialect*: Buma-Kxoe. *Lg Use*: Shifting to Mbukushu [mhw]. *Lg Dev*: Radio. Dictionary. Bible portions: 2010. *Writing*: Latin script, developed in 2006. *Other*: Traditional religion. *Map*: 22:41. *Worldwide*: Total users in all countries: 7,860. Global EGIDS level: 5 (Developing). Also indigenous in: Botswana, Namibia. Also established in: Zambia. Unestablished in: South Africa.

Kibala [blv] (Ipala, Kibala-Ngoya, Kimbundu de Kwanza Sul, Ngoya, Pala, Quibala). *Users*: 950,000 (2016 L. Jordan). Ethnic population: 1,030,000 (2016 L. Jordan). *Location*: Kuanza

Sul province: Libolo municipality southeast of Luanda. *Status*: 6a (Vigorous). *Class*: Niger-Congo, Atlantic-Congo, Volta-Congo, Benue-Congo, Bantoid, Southern, Narrow Bantu, Central, H, Kimbundu (H.23). *Dialects*: Bolo (Libolo, Lubolo), Hebó, Ucela, Mbwi, Sende. Related to Kimbundu [kmb] and Songo [nsx]. *Lg Use*: Home, church, commerce. Used by all. Positive attitudes. Also use Kimbundu [kmb]. Also use Portuguese [por]. *Lg Dev*: Literacy rate in L2: 30% in Portuguese [por]. Radio. *DLS*: Still. *Writing*: Unwritten. *Other*: Christian, traditional religion. *Map*: 22:7.

Kikongo [kng] (Congo, Kikoongo, Kongo, Koongo). Autonym: Kikongo. *Users*: 3,300,000 in Angola (2020). 2,550,000 Kikongo, 747,000 Fiote. *Location*: Scattered. north Bengo and Malanje provinces; south Cabinda province; Kuanza Norte province: small border areas; Uíge and Zaire provinces: north, along Congo river. Cabinda (Kiyombe dialect); Angola proper (Kisikongo and San Salvador dialects). *Status*: 3 (Wider communication). De facto language of national identity. *Class*: Niger-Congo, Atlantic-Congo, Volta-Congo, Benue-Congo, Bantoid, Southern, Narrow Bantu, Central, H, Kikongo (H.16). *Dialects*: South Kongo, South East Kongo (Nkanu, Pende, Zoombo), West Kongo (Fiote, Fioti), Ndingi (Ndinzi), Mboka, Kisikongo, Kizombo (Zombo), Kindibu, Kimanyanga, Kiyombe (Cabinda, Ibinda, Kiwoyo, San Salvador Kongo). Kisikongo is the principal dialect. Kiyombe is the main dialect of eastern Cabinda. Together with Kiwoyo, Kiyombe is referred to as Ibinda (the language of Cabinda). Ndingi and Mboka dialects may be separate languages. *Type*: SVO (for Nzamba); 5 vowels. *Lg Dev*: Taught at the teacher training college in Luanda. Radio. TV. Dictionary. Grammar. Bible: 1905–1962. *Writing*: Latin script. *Other*: Christian. *Map*: 22:2. *Worldwide*: Total users in all countries: 11,316,500 (as L1: 6,316,500; as L2: 5,000,000). Also indigenous in: Congo (Koongo), Democratic Republic of the Congo (Koongo).

Kilari [ldi] (Laadi, Laari, Ladi, Lari). *Location*: Zaire province: northwest corner; possibly scattered communities. *Status*: 6a* (Vigorous). *Class*: Niger-Congo, Atlantic-Congo, Volta-Congo, Benue-Congo, Bantoid, Southern, Narrow Bantu, Central, H, Kikongo (H.16). *Lg Dev*: Dictionary. Grammar. Texts. NT: 2009. *Writing*: Latin script. *Other*: Non-indigenous. Part of Kongo subgroup. Christian, Muslim. *Worldwide*: Total users in all countries: 159,000. Global EGIDS level: 5 (Developing). Indigenous in: Congo (Laari).

Kimbundu [kmb] (Kimbundo, Loanda Mbundu, Loande, Luanda, Lunda, Mbundu, N'bundo, Nbundu, North Mbundu). Autonym: Kimbundu. *Users*: 1,700,000 in Angola (2015 L. Jordan). Ethnic population: 6,000,000 (2015 L. Jordan). *Location*: Widespread northwest, mainly Bengo, Kuanza Norte, and Malanje provinces; adjacent areas in Kuanza Sul, Luanda, and Uíge provinces. *Status*: 3 (Wider communication). Established 15th century. Spread in northwestern Angola under Portuguese colonialism (16th century) and Methodist missionary influence (1880s). *Class*: Niger-Congo, Atlantic-Congo, Volta-Congo, Benue-Congo, Bantoid, Southern, Narrow Bantu, Central, H, Kimbundu (H.21). *Dialects*: Njinga (Ginga, Jinga), Mbamba (Bambeiro, Kimbamba), Mbaka (Ambaquista), Ngola, Ndongo (Dongo, Kindongo), Kisama (Kissama, Quissama, Sama), Ngongembo. Mbamba dialect may be a separate language. *Lg Use*: Used as L2 by Kibala [blv]. *Lg Dev*: Taught at teacher training colleges in the provinces of Luanda, Bengo, Cuanza Norte and Malanje. Dictionary. Grammar. Bible: 1980. *DLS*:

Ascending (0.18). *Writing*: Latin script. *Map*: 22:5. *Worldwide*: Total users in all countries: 1,700,160. Also established in: São Tomé e Príncipe.

Kung-Ekoka [knw] (!Hu, !Khung, !Ku, !Kung, !Xu, !Xun, !Xung, Ekoko-!Xû, Qxû). *Users*: 5,500 in Angola (2016 L. Jordan). *Location*: Cunene, Huíla, and Kuando Kubango provinces. *Status*: 6b* (Threatened). *Class*: Kx'a, !Kung. *Lg Use*: Many also use Nyaneka [nyk]. *Lg Dev*: Dictionary. Grammar. Texts. Bible portions: 1980. *Writing*: Latin script. *Other*: Non-indigenous. Traditional religion, Christian. *Map*: 22:30. *Worldwide*: Total users in all countries: 16,500. Global EGIDS level: 6a (Vigorous). Indigenous in: Botswana, Namibia.

Kuvale [olu] (Mucubal). Autonym: Kuvale, Olukuvale. *Users*: 70,000 (2015 L. Jordan). *Location*: Benguela and Namibe provinces: Atlantic coast to Huila province border east, from Dombe Grande north to Tombua south. *Status*: 6a (Vigorous). *Class*: Niger-Congo, Atlantic-Congo, Volta-Congo, Benue-Congo, Bantoid, Southern, Narrow Bantu, Central, R, Umbundu (R.101). *Dialects*: None known. Most similar to Herero [her]. Lexical similarity: 52%–54% with Nyaneka [nyk] (2015 L. Jordan). *Lg Use*: All domains. Used by all. Positive attitudes. A few also use Portuguese [por]. Used as L2 by Kwandu [xdo], Ngendelengo [nql]. *DLS*: Still. *Writing*: Latin script. *Map*: 22:28.

Kwadi [kwz] (Bakoroka, Cuanhoca, Cuepe, Curoca, Koroka, Makoroko, Mucoroca). *Users*: No known L1 speakers. Last known speakers survived into the late 1970s (Winter 1981). *Location*: Namibe province: southwest corner, Coroca river area south of Namibe town. *Status*: 10 (Extinct). *Class*: Khoe-Kwadi, Kwadi. *Dialect*: Zorotua (Vasorontu). *Lg Use*: Used regularly (Westphal 1971); no remaining speakers (Winter 1981). *DLS*: Still. *Writing*: Unwritten.

Kwandu [xdo] (Kwando, Ovakwandu). Autonym: Kwandu, Olukwandu. *Users*: 6,000 (2016 L. Jordan). Ethnic population: 6,000 (2016 L. Jordan). *Location*: Namibe province: Kumucuío municipality, on the Serra das Neves plateau, near Mamué. *Status*: 5 (Developing). *Class*: Niger-Congo, Atlantic-Congo, Volta-Congo, Benue-Congo, Bantoid, Southern, Narrow Bantu, Central, R, Umbundu (R.13). *Dialects*: Similar to Kuvale [olu] and Nyaneka [nyk]. Lexical similarity: 70% with the Cilenge dialect of Nyaneka [nyk]. *Lg Use*: Vigorous. All domains. Used by all. Most also use Kuvale [olu]. Most also use Nyaneka [nyk]. *Lg Dev*: Bible portions: 2016. *DLS*: Still. *Writing*: Latin script, limited usage. *Other*: Different from the Kwandu dialects of Mashi [mho] in Zambia, Angola, and Namibia. *Map*: 22:26.

Kwangali [kwn] (Cuangar, Kwangare, Kwangari, Rukwangari, Rukwángali, Sikwangali, Vakwángali). Autonym: Rukwángali. *Users*: 22,000 in Angola (2017 K. Legère). *Location*: Kuando Kubango province: Diriku and Kalai municipalities. *Status*: 5* (Dispersed). *Class*: Niger-Congo, Atlantic-Congo, Volta-Congo, Benue-Congo, Bantoid, Southern, Narrow Bantu, Central, K, Luyana (K.33). *Dialect*: Shambyu (Sambio, Sambiu, Sambyu, Shisambyu). *Type*: SVO; prepositions; 18 noun classes; passives; tense and aspect; causatives; 18 consonants and 5 vowels; tonal (2 tones: high, low); partial vowel harmony; 1 click phoneme. *Lg Dev*: Radio. Dictionary. Grammar. Texts. Bible: 1987. *Writing*: Latin script. *Other*: Traditional religion, Christian. *Map*: 22:43. *Worldwide*: Total users in all countries: 192,000. Global EGIDS level:

4 (Educational). Also indigenous in: Namibia.

Luba-Lulua [lua] (Luba-Kasai). Autonym: Ciluba, Tshiluba. *Users*: 60,000 in Angola (2018 L. Jordan). *Location*: Lunda Norte province: Cambulo, Chitato, Cuilo, and Lucapa municipalities. *Status*: 6a (Vigorous). *Class*: Niger-Congo, Atlantic-Congo, Volta-Congo, Benue-Congo, Bantoid, Southern, Narrow Bantu, Central, L, Luba (L.31). *Lg Use*: Vigorous. Used by all. *Lg Dev*: Literature. Periodicals. Radio. TV. Videos. Dictionary. Grammar. Bible: 1927–1996. *Writing*: Latin script. *Map*: 22:13 (as Luba-Kasai). *Worldwide*: Total users in all countries: 7,060,000 (as L1: 6,360,000; as L2: 700,000). Global EGIDS level: 3 (Wider communication). Also indigenous in: Democratic Republic of the Congo (Luba-Kasai).

Luchazi [lch] (Lucazi, Lujash, Lujazi, Lutchaz, Lutshase, Luxage, Ponda, chi-Luchazi). Autonym: Chiluchazi. *Users*: 400,000 in Angola (2011 S. Floor). *Location*: Kuando Kubango province: Kuito Kuanavale to Mavinga; southwest Moxico province: Lucazi municipality; adjacent areas. *Status*: 5 (Developing). *Class*: Niger-Congo, Atlantic-Congo, Volta-Congo, Benue-Congo, Bantoid, Southern, Narrow Bantu, Central, K, Ciokwe-Luchazi (K.13). *Dialects*: None known. Part of Ngangela subgroup. Readily intelligible with all variants of the Ngangela macrolanguage. *Lg Use*: Home, church, commerce. Used by all. Positive attitudes. Used as L2 by Northwestern !Kung [vaj]. *Lg Dev*: Grammar. Bible: 1963. *DLS*: Emerging (0.04). *Writing*: Latin script. *Other*: Lucazi is a prestige form of the Ngangela language cluster. Christian, traditional religion. *Map*: 22:21. *Worldwide*: Total users in all countries: 430,900. Also established in: Zambia. Unestablished in: Namibia.

Luimbi [lum] (Chiluimbi, Luimbe, Lwimbe, Lwimbi). *Users*: 43,900 (2000). *Location*: North Bié and south Malanje provinces: Kuanza river watershed area. *Status*: 6a* (Vigorous). *Class*: Niger-Congo, Atlantic-Congo, Volta-Congo, Benue-Congo, Bantoid, Southern, Narrow Bantu, Central, K, Ciokwe-Luchazi (K.12). *Dialects*: None known. Related to Nkangala [nkn] and Mbwela [mfu]; in Ngangela subgroup. Similar to Songo [nsx], less similar to Luchazi [lch] and Ngonzela of Ngangela cluster. Doubtful if intelligible with Mbwela [mfu], as they are not contact languages. *Lg Dev*: Bible portions: 1935. *DLS*: Still. *Writing*: Latin script. *Map*: 22:23.

Lunda [lun] (Ruund, chiLunda). Autonym: chiLunda. *Users*: 178,000 in Angola (Johnstone and Mandryk 2001). *Location*: Lunda Norte province: Caungula municipality; Lunda Sul and Moxico provinces: contiguous border area with Democratic Republic of Congo (DRC) and Zambia. *Status*: 5* (Dispersed). *Class*: Niger-Congo, Atlantic-Congo, Volta-Congo, Benue-Congo, Bantoid, Southern, Narrow Bantu, Central, L, Lunda (L.52). *Lg Dev*: Newspapers. Radio. TV. Dictionary. Bible: 1962–2012. *Writing*: Latin script. *Map*: 22:16. *Worldwide*: Total users in all countries: 403,000. Global EGIDS level: 4 (Educational). Also indigenous in: Democratic Republic of the Congo, Zambia.

Luvale [lue] (Balovale, Chiluvale, Lovale, Lubale, Luena, Lwena). Autonym: Chiluvale, Luvale. *Users*: 339,000 in Angola (2021). *Location*: Moxico and southeast provinces. *Status*: 5* (Dispersed). *Class*: Niger-Congo, Atlantic-Congo, Volta-Congo, Benue-Congo, Bantoid, Southern, Narrow Bantu, Central, K, Ciokwe-Luchazi (K.14). *Lg Dev*: Newspapers. Radio. TV. Grammar. Bible: 1955–1970. *Writing*: Latin script. *Other*: Christian, traditional religion.

Map: 22:17. Worldwide: Total users in all countries: 510,000. Global EGIDS level: 4 (Educational). Also indigenous in: Zambia.

Makoma [sie] (Simaa). *Users:* 3,000 in Angola (2018 L. Jordan). *Location:* Moxico province: Bundas municipality; vicinity around Mussuma town east of Lumbala near the border of Zambia. *Status:* 6a (Vigorous). *Class:* Niger-Congo, Atlantic-Congo, Volta-Congo, Benue-Congo, Bantoid, Southern, Narrow Bantu, Central, K, Luyana (K.35). *Lg Use:* Vigorous. Used by all. *Writing:* Latin script, developed in 2011. *Map: 22:19. Worldwide:* Total users in all countries: 19,700. Also indigenous in: Zambia (Simaa).

Mashi [mho] (Kamaxi, Masi). *Users:* 2,630 in Angola (2000). *Location:* Kuando Kubango and Moxico provinces: Kuando river west bank. *Status:* 5 (Developing). *Class:* Niger-Congo, Atlantic-Congo, Volta-Congo, Benue-Congo, Bantoid, Southern, Narrow Bantu, Central, K, Luyana (K.34). *Dialects:* North Kwandu, South Kwandu, Mashi. *Lg Use:* Used by all. *Lg Dev:* Bible portions: 2013. *Writing:* Latin script, developed in 2011. *Other:* Nomadic. Different from Mashi [shr] which is related to Havu [hav] of Democratic Republic of the Congo. Mashi dialect sometimes called Ndonga, which is not Oshiwambo Ndonga [kua]. Traditional religion. *Map: 22:38. Worldwide:* Total users in all countries: 21,430. Also indigenous in: Zambia.

Mbangala [mxg] (Bangala, Cimbangala, Umbangala). *Users:* 400,000 (2012). *Location:* West Lunda Norte province; northeast Malanje province; Malanje province: Canhica area; northwest Lunda Sul and Uíge provinces: small areas east; Kahombo, Kela e Kambundi Katembu; community in Luanda. *Status:* 5* (Developing). *Class:* Niger-Congo, Atlantic-Congo, Volta-Congo, Benue-Congo, Bantoid, Southern, Narrow Bantu, Central, H, Yaka (H.34). *Dialects:* Mbangala, Yongo. Reportedly similar to Kimbundu [kmb], but so distinct that different literature is needed. *Lg Dev:* NT: 2022. *DLS:* Still. *Writing:* Latin script. *Map: 22:9.*

Mbukushu [mhw] (Cusso, Gova, Kuso, Mambukush, Mampukush, Mbukuhu, Mbukushi, Thimbukushu). Autonym: Thimbukushu. *Users:* 4,810 in Angola (2014 L. Jordan). Ethnic population: 7,210 (2014 L. Jordan). *Location:* Kuando Kubango province: Okavango river north bank. *Status:* 6b* (Threatened). *Class:* Niger-Congo, Atlantic-Congo, Volta-Congo, Benue-Congo, Bantoid, Southern, Narrow Bantu, Central, K, Luyana (K.333). *Lg Use:* Used as L2 by Khwedam [xuu]. *Lg Dev:* Radio. Dictionary. Grammar. NT: 1986. *Writing:* Latin script. *Other:* Traditional religion, Christian. *Map: 22:39. Worldwide:* Total users in all countries: 95,010. Global EGIDS level: 4 (Educational). Also indigenous in: Botswana, Namibia, Zambia.

Mbunda [mck] (Chimbunda, Ki-mbunda, Mbúunda). Autonym: Chimbúunda. *Users:* 135,000 in Angola (Johnstone and Mandryk 2001). *Location:* Moxico province. *Status:* 5* (Developing). *Class:* Niger-Congo, Atlantic-Congo, Volta-Congo, Benue-Congo, Bantoid, Southern, Narrow Bantu, Central, K, Ciokwe-Luchazi (K.15). *Lg Dev:* Dictionary. Bible: 2006. *DLS:* Emerging (0.06). *Writing:* Latin script. *Other:* Different from Mbuun [zmp] in Democratic Republic of the Congo and Zambia and is in Tende-Yanzi group. *Map: 22:18. Worldwide:* Total users in all countries: 218,000. Also indigenous in: Zambia.

Mbwela [mfu] (Ambuela, Ambuella, Mbuela, Mbwera, Shimbwera). *Users*: 222,000 (Johnstone and Mandryk 2001). *Location*: Kuando Kubango province: large central, southern area; Bié, Cunene, Huíla, and Moxico provinces. *Status*: 6a* (Vigorous). *Class*: Niger-Congo, Atlantic-Congo, Volta-Congo, Benue-Congo, Bantoid, Southern, Narrow Bantu, Central, K, Ciokwe-Luchazi (K.17). *Dialects*: None known. Part of Ngangela subgroup. Intelligible with Luchazi [lch], Ngonzela, and Nyemba [nba], and will be able to use the new Lucazi Bible. *DLS*: Still. *Writing*: Latin script. *Other*: Traditional religion, Christian. *Map*: 22:37.

Mpinda [pnd]. *Users*: 18,000 (2018 L. Jordan). Ethnic population: 30,000 (2018 L. Jordan). *Location*: Kuanza Sul province: south of Porto Amboim town. *Status*: 6b (Threatened). *Class*: Niger-Congo, Atlantic-Congo, Volta-Congo, Benue-Congo, Bantoid, Southern, Narrow Bantu, Central, H, Kimbundu (H.21). *Dialects*: None known. Most closely related to Kimbundu [kmb]. Lexical similarity: 64% with Ndongo variety of Kimbundu [kmb], 47% with Kibala [blv]. *Lg Use*: Some young people, all adults. Mpinda children learn Portuguese [por] even before they enter school. Adults often use Portuguese when speaking with children or age peers and at church, while they use Mpinda with parents and elders and perhaps with their spouses (2018 L. Jordan). Mixed attitudes. All also use Portuguese [por]. *DLS*: Still. *Writing*: Unwritten. *Map*: 22:6.

Ndombe [ndq] (Dombe). *Users*: 22,300 (2000). *Location*: Benguela province: Ndombe area south and southeast of Benguela. *Status*: 6a* (Vigorous). *Class*: Niger-Congo, Atlantic-Congo, Volta-Congo, Benue-Congo, Bantoid, Southern, Narrow Bantu, Central, R, Umbundu (R.12). *Dialects*: Not a Uvimbundu [umb] dialect; survey needed. *DLS*: Still. *Writing*: Unwritten. *Map*: 22:25.

Ngendelengo [nql] (Cuendelengo, Kwendelengo, N'Guendelengo, Olungendelengo, Ovangendelengo). *Users*: 900 (2016 L. Jordan). Ethnic population: 1,000 (2016 L. Jordan). *Location*: Namibe Province: north of Kamucuío town, just south of Mamué; also south of Kamucuío municipality. *Status*: 6a (Vigorous). *Class*: Niger-Congo, Atlantic-Congo, Volta-Congo, Benue-Congo, Bantoid, Southern, Narrow Bantu, Central, R, Umbundu (R.101). *Dialects*: None known. Most similar to Kuvale [olu]. Lexical similarity: 66% with Kuvale [olu]. *Lg Use*: Used by all. Also use Kuvale [olu], especially among the youth. *DLS*: Still. *Writing*: Unwritten. *Map*: 22:27.

Nkangala [nkn] (Cangala, Ngangala). *Users*: 22,300 (2000). *Location*: Kuando Kubango and Moxico provinces. *Status*: 6a* (Vigorous). *Class*: Niger-Congo, Atlantic-Congo, Volta-Congo, Benue-Congo, Bantoid, Southern, Narrow Bantu, Central, K, Ciokwe-Luchazi (K.18). *Dialects*: None known. Member of Ngangela cluster. Intelligible with Nyemba [nba], Mbwela [mfu], Ngonzela, and Luchazi [lch]. *DLS*: Still. *Writing*: Latin script. *Map*: 22:22.

Nkumbi [khu] (Khumbi, Muhumbi, Ngumbi, Nkhumbi, Olungkhumbi, Otjingumbi). Autonym: Ocinkumbi. *Users*: 713,000 (2021). *Location*: Cunene and Huíla provinces: Cunene river west bank. *Status*: 5 (Developing). *Class*: Niger-Congo, Atlantic-Congo, Volta-Congo, Benue-Congo, Bantoid, Southern, Narrow Bantu, Central, R, Umbundu (R.14). *Dialect*: Nkumbi-mulondo. Part of Nyaneka [nyk] cluster, but low intelligibility with the central variants of

Nyaneka. Bordering on and reportedly similar to the Nyaneka-Gambwe variant. *Lg Use*: Used by all. Also use Oshiwambo [kua]. *Lg Dev*: Bible portions: 1985–1987. *DLS*: Still. *Writing*: Latin script. *Map*: 22:33.

Northwestern !Kung [vaj] (!'O!Xun, !O!kung, !O!ung, !Xun, Maligo, Northwestern !Xun, Sekela, Vasekela Bushman, Vasekele). *Users*: 9,200 in Angola (2015 L. Jordan). Ethnic population: 10,000 (2015 L. Jordan). *Location*: Cunene province: border area, surrounded by Oshiwambo [kua] language area, at least 8 communities; Huambo province; Kuando Kubango province: 3 enclaves, one between Mbwela [mfu] and Kwangali [kwn] language areas, another northeast on Kuando river. *Status*: 6b (Threatened). *Class*: Kx'a, !Kung. *Lg Use*: Home. Some young people, all adults. Mixed attitudes. Many also use Luchazi [lch]. Many also use Nyemba [nba]. Many also use Oshiwambo [kua]. *Lg Dev*: Literacy rate in L2: Under 5%. No orthography, literacy, or language development. Radio. *DLS*: Still. *Writing*: Unwritten. *Other*: Traditional religion. *Map*: 22:32. *Worldwide*: Total users in all countries: 15,070. Also indigenous in: Namibia. Also established in: South Africa.

Nyaneka [nyk] (Lunyaneka, Nhaneka, Nhaneka, Olunyaneka). Autonym: Oluñaneka. *Users*: 1,150,000 (2021). *Location*: Mainly Huíla and Namibe provinces; also Benguela and Cunene provinces. *Status*: 5 (Developing). *Class*: Niger-Congo, Atlantic-Congo, Volta-Congo, Benue-Congo, Bantoid, Southern, Narrow Bantu, Central, R, Umbundu (R.13). *Dialects*: Humbe (OluHumbe), Mwila (Huila, Muila, Olumuila), Ngambwe (Olungambwe), Handa, Cilenge (OluCilenge), Nyaneka. Nyaneka seems to be a cluster of related but distinct varieties. Nkumbi [khu] is probably part of this cluster too, more closely related to the Handa and Humbe dialects. The cluster is sometimes called Nyaneka-Humbi. Speakers of Humbe and Cilenge have difficulty understanding one another. Lexical similarity: Mwila 79% with Nyaneka, 74% with Ngambwe, 65% with Handa; Nyaneka 80% with Ngambwe, 76% with Handa; Ngambwe 68% with Handa. Humbe 74% with Cilenge. *Lg Use*: High vitality across the whole language area (2013 SIL). Used by all. Positive attitudes. Used as L2 by Kung-Ekoka [knw], Kwandu [xdo]. *Lg Dev*: TV. Texts. NT: 2005. *DLS*: Emerging (0.09). *Writing*: Latin script, developed in 2008. *Other*: Traditional religion, Christian. *Map*: 22:29.

Nyemba [nba] (Gangela, Ganguela, Ganguella, Ngangela, Nganguela, Nhemba). *Users*: 1,050,000 in Angola (2021). *Location*: North Cunene, east Huíla, northwest Kuando Kubango provinces; some in Bié and Huambo provinces. *Status*: 5* (Developing). *Class*: Niger-Congo, Atlantic-Congo, Volta-Congo, Benue-Congo, Bantoid, Southern, Narrow Bantu, Central, K, Ciokwe-Luchazi (K.12). *Dialects*: None known. Part of Ngangela subgroup. Fully intelligible with Luchazi [lch], Nkangala [nkn], Mbwela [mfu], and Ngonzela. *Lg Use*: Used as L2 by Northwestern !Kung [vaj]. *Lg Dev*: Bible portions: 1955. *DLS*: Emerging (0.06). *Writing*: Latin script. *Map*: 22:31. *Worldwide*: Total users in all countries: 1,059,540. Unestablished in: Namibia.

Nyengo [nye] (Nhengo). *Users*: 9,380 (2000). *Location*: Kuando Kubango province. *Status*: 6a* (Vigorous). *Class*: Niger-Congo, Atlantic-Congo, Volta-Congo, Benue-Congo, Bantoid, Southern, Narrow Bantu, Central, K, Ciokwe-Luchazi (K.16). *DLS*: Still. *Writing*: Unwritten.

Map: 22:40.

Oshiwambo [kua] (Cuanhama, Humba, Kuanjama, Kuanyama, Kwancama, Kwanjama, Kwanyama, Ochikwanyama, Oshikuanjama, Osikuanjama, Ovambo, Oxikuanjama, Wambo). Autonym: Oshikwanyama, Oshiwambo. *Users*: 821,000 in Angola, all users. L1 users: 781,000 in Angola (2021). L2 users: 40,000 (2013 SIL). *Location*: South central, Namibian border: Cunene and Kuando Kubango provinces. *Status*: 3 (Wider communication). De facto language of national identity. Original language of powerful Kwanyama kingdom of southern Angola and northern Namibia. Spread as language of conquest throughout colonial period until 1917. Currently used in eastern half of Kunene Province in church, market, business, and media domains. *Class*: Niger-Congo, Atlantic-Congo, Volta-Congo, Benue-Congo, Bantoid, Southern, Narrow Bantu, Central, R, Wambo (R.21). *Dialects*: Kwanyama, Mbadja. Intelligible with Ndonga [ndo] and Kwambi [kwm]. *Lg Use*: Used as L2 by Nkumbi [khu], Northwestern !Kung [vaj]. *Lg Dev*: Most adults can read it, while most youth cannot. To date, it is used as a written standard by the Mbadja people as well as the Kwanyama people (2014 SIL). Taught as subject in primary schools in grades 1–6 in Cunene province. Literature. Dictionary. Grammar. Bible: 1974. *DLS*: Ascending (0.29). *Writing*: Braille script. Latin script, primary usage. Map: 22:36. *Worldwide*: Total users in all countries: 1,429,000 (as L1: 1,389,000; as L2: 40,000). Also indigenous in: Namibia (Kwanyama).

Portuguese [por] (Português). Autonym: Português. *Users*: 20,390,000 in Angola, all users. L1 users: 13,600,000 in Angola (2021). Includes 60,000 foreign L1 users. In cities, Portuguese increasingly L1 of younger generation. 60% of Angolans use Portuguese, 40% as L1. High level of urbanization due to civil war led to increased use. L2 users: 6,790,000 (2021). *Status*: 1 (National). Statutory national language (2010, Constitution, Article 19(1)). *Class*: Indo-European, Italic, Romance, Italo-Western, Western, Gallo-Iberian, Ibero-Romance, West Iberian, Portuguese-Galician. *Type*: SVO; prepositions; gender (masculine/feminine); definite and indefinite articles; verb affixes mark person, number; passives; tense; comparatives; 21 consonants, 13 vowels, 11 diphthongs; non-tonal. *Lg Use*: An African, Bantuized form of Portuguese [por] is slowly making inroads. *Lg Dev*: Taught in all primary and secondary schools. Taught in most tertiary schools. Fully developed. Bible: 1751–2017. *Writing*: Braille script. Latin script, primary usage. *Other*: Non-indigenous. *Worldwide*: Total users in all countries: 263,638,850 (as L1: 236,266,650; as L2: 27,372,200). Indigenous in: Portugal, Spain. Also established in 13 other countries and unestablished in 39 more.

Ruund [rnd] (Chilu Wunda, Luunda, Muatiamvua, Northern Lunda, Ruwund, Uruund). Autonym: Uruund. *Users*: 98,500 in Angola (2000). *Location*: Northeast, north central Lunda Norte province: Luchibe river area. *Status*: 5* (Developing). *Class*: Niger-Congo, Atlantic-Congo, Volta-Congo, Benue-Congo, Bantoid, Southern, Narrow Bantu, Central, L, Lunda (L.53). *Lg Dev*: Dictionary. Grammar. Bible: 2008–2009. *Writing*: Latin script. *Other*: Non-indigenous. Map: 22:12. *Worldwide*: Total users in all countries: 251,500. Indigenous in: Democratic Republic of the Congo.

Songo [nsx] (Nsongo, Sungu). *Users*: 50,000 (1978 UBS). *Location*: North central, southeast of

Luanda, Malanje, Kuanza Sul, Bié, and Lunda Norte provinces. *Status*: 5* (Developing). *Class*: Niger-Congo, Atlantic-Congo, Volta-Congo, Benue-Congo, Bantoid, Southern, Narrow Bantu, Central, H, Kimbundu (H.24). *Lg Dev*: NT: 2021. *DLS*: Still. *Writing*: Latin script. *Map*: 22:8.

Suku [sub] (Kisuku, Musuku). Autonym: Kisuku. *Users*: 30,000 in Angola (2018 L. Jordan). *Location*: Lunda Norte province: Caungula and Cuango municipalities. *Status*: 6a (Vigorous). *Class*: Niger-Congo, Atlantic-Congo, Volta-Congo, Benue-Congo, Bantoid, Southern, Narrow Bantu, Central, H, Yaka (H.32). *Type*: 19 noun classes; 21 consonants and 5 vowels. *Lg Use*: Vigorous. Used by all. *Lg Dev*: Radio. Videos. Bible portions: 1973. *Writing*: Latin script, no longer in use. *Map*: 22:11. *Worldwide*: Total users in all countries: 80,000. Also indigenous in: Democratic Republic of the Congo.

Umbundu [umb] (Kimbari, M'bundo, Mbali, Mbari, Mbundu, Mbundu Benguella, Nano, Olumbali, Ovimbundu, South Mbundu, Umbundo). Autonym: Umbundu. *Users*: 7,810,000 (2021). *Location*: Scattered in the west central area, mostly Huambo, Kuanza Sul, and Benguela provinces; also Bié, Huíla, Namibe, and Bengo provinces. *Status*: 3 (Wider communication). Trade language, particularly for slave and ivory trade, between Ovimbundu people and Portuguese settlers in 1700s. Beginning in 1874 used as church language with arrival of Catholic missionaries. *Class*: Niger-Congo, Atlantic-Congo, Volta-Congo, Benue-Congo, Bantoid, Southern, Narrow Bantu, Central, R, Umbundu (R.11). *Dialects*: Mbalundu, Hele (Sele). *Lg Dev*: Taught at teacher training colleges in the provinces of Huambo, Bié, and Benguela. Dictionary. Grammar. Bible: 1963. *DLS*: Ascending (0.24). *Writing*: Latin script. *Other*: Christian, traditional religion. *Map*: 22:24.

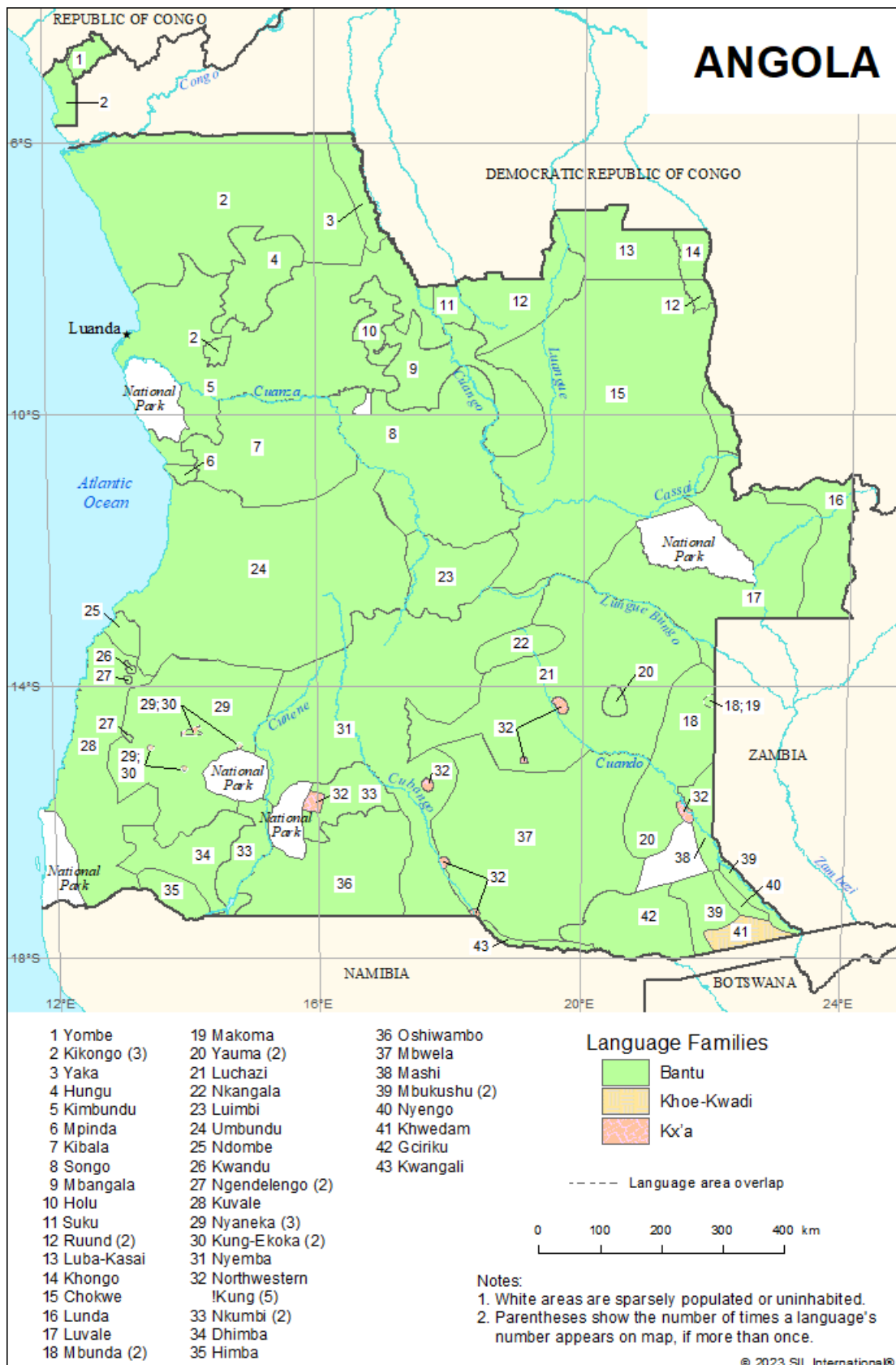
Yaka [yaf] (Iaca, Iaka, Iyaka, Kiyaka). *Users*: 200,000 in Angola (2000 SIL). *Location*: North central corner, east of the Kwango river; Uíge province: Kimbele municipality; Malanje province northeast corner. *Status*: 6a* (Vigorous). *Class*: Niger-Congo, Atlantic-Congo, Volta-Congo, Benue-Congo, Bantoid, Southern, Narrow Bantu, Central, H, Yaka (H.31). *Dialects*: Yaka, Ngoongo. *Lg Dev*: Dictionary. Bible portions: 1938–1957. *Writing*: Latin script. *Map*: 22:3. *Worldwide*: Total users in all countries: 900,000. Also indigenous in: Democratic Republic of the Congo.

Yauma [yax]. *Users*: 17,100 in Angola (2000). *Location*: Southeast, isolated enclave in Luchazi [lch] language area, Moxico province; Kuando Kubango Province, Kuando river area. *Status*: 6a* (Vigorous). *Class*: Niger-Congo, Atlantic-Congo, Volta-Congo, Benue-Congo, Bantoid, Southern, Narrow Bantu, Central, K, Ciokwe-Luchazi (K.16). *Dialects*: None known. Part of the Ngangela Subgroup. *Lg Dev*: Bible portions: 1978. *DLS*: Still. *Writing*: Latin script, plans for future development using this script. *Map*: 22:20. *Worldwide*: Total users in all countries: 29,100. Also indigenous in: Zambia.

Yombe [yom] (Bayombe, Ibinda, Iombe, Kiombi, Kiyombe, Kiyoombi). Autonym: Kiyombe. *Users*: 39,400 in Angola (2000). *Location*: Cabinda. *Status*: 5* (Developing). *Class*: Niger-Congo, Atlantic-Congo, Volta-Congo, Benue-Congo, Bantoid, Southern, Narrow Bantu, Central, H, Kikongo (H.16). *Dialects*: Mbala (Mumbala), Vungunya (Kivungunya, Yombe

Classique). *Lg Dev*: Radio. NT: 2005. *Writing*: Latin script. *Other*: The dialect of Yombe spoken in the northern half of Cabinda is quite different from the Congolese dialect used in the Yombe New Testament translation, due to influence from the speech varieties of southern Cabinda. Christian, traditional religion. *Map*: 22:1. *Worldwide*: Total users in all countries: 734,400. Also indigenous in: Congo, Democratic Republic of the Congo (Kiyombe).

Language Map



Languages by Population

In this section the languages of Angola are listed in order of their population of first-language speakers within the country, from highest to lowest. The entries report just the population and status elements.

10,000,000 to 99,999,999

Portuguese [por] *Users:* 13,600,000 in Angola (2021). Includes 60,000 foreign L1 users. In cities, Portuguese increasingly L1 of younger generation. 60% of Angolans use Portuguese, 40% as L1. High level of urbanization due to civil war led to increased use. 20,390,000 in Angola, all users. L2 users: 6,790,000 (2021). *Status:* 1 (National). Statutory national language (2010, Constitution, Article 19(1)). *Worldwide:* Total users in all countries: 263,638,850 (as L1: 236,266,650; as L2: 27,372,200).

1,000,000 to 9,999,999

Umbundu [umb] *Users:* 7,810,000 (2021). *Status:* 3 (Wider communication).

Kikongo [kng] *Users:* 3,300,000 in Angola (2020). 2,550,000 Kikongo, 747,000 Fiote. *Status:* 3 (Wider communication). De facto language of national identity. *Worldwide:* Total users in all countries: 11,316,500 (as L1: 6,316,500; as L2: 5,000,000).

Chokwe [cjk] *Users:* 2,210,000 in Angola (2021). *Status:* 3 (Wider communication). De facto language of national identity. *Worldwide:* Total users in all countries: 2,731,700.

Kimbundu [kmb] *Users:* 1,700,000 in Angola (2015 L. Jordan). Ethnic population: 6,000,000 (2015 L. Jordan). *Status:* 3 (Wider communication). *Worldwide:* Total users in all countries: 1,700,160.

Nyaneka [nyk] *Users:* 1,150,000 (2021). *Status:* 5 (Developing).

Nyemba [nba] *Users:* 1,050,000 in Angola (2021). *Status:* 5* (Developing). *Worldwide:* Total users in all countries: 1,059,540.

100,000 to 999,999

Kibala [blv] *Users:* 950,000 (2016 L. Jordan). Ethnic population: 1,030,000 (2016 L. Jordan). *Status:* 6a (Vigorous).

Oshiwambo [kua] *Users:* 781,000 in Angola (2021). 821,000 in Angola, all users. L2 users: 40,000 (2013 SIL). *Status:* 3 (Wider communication). De facto language of national identity. *Worldwide:* Total users in all countries: 1,429,000 (as L1: 1,389,000; as L2: 40,000).

Nkumbi [khu] *Users:* 713,000 (2021). *Status:* 5 (Developing).

Hungu [hng] *Users:* 500,000 (2018 L. Jordan). Ethnic population: 800,000 (2018 L. Jordan).

Status: 6b (Threatened).

Luchazi [[lch](#)] *Users:* 400,000 in Angola (2011 S. Floor). *Status:* 5 (Developing). *Worldwide:* Total users in all countries: 430,900.

Mbangala [[mxg](#)] *Users:* 400,000 (2012). *Status:* 5* (Developing).

Luvale [[lue](#)] *Users:* 339,000 in Angola (2021). *Status:* 5* (Dispersed). *Worldwide:* Total users in all countries: 510,000.

Mbwela [[mfu](#)] *Users:* 222,000 (Johnstone and Mandryk 2001). *Status:* 6a* (Vigorous).

Yaka [[yaf](#)] *Users:* 200,000 in Angola (2000 SIL). *Status:* 6a* (Vigorous). *Worldwide:* Total users in all countries: 900,000.

Lunda [[lun](#)] *Users:* 178,000 in Angola (Johnstone and Mandryk 2001). *Status:* 5* (Dispersed). *Worldwide:* Total users in all countries: 403,000.

Mbunda [[mck](#)] *Users:* 135,000 in Angola (Johnstone and Mandryk 2001). *Status:* 5* (Developing). *Worldwide:* Total users in all countries: 218,000.

10,000 to 99,999

Ruund [[rnd](#)] *Users:* 98,500 in Angola (2000). *Status:* 5* (Developing). *Worldwide:* Total users in all countries: 251,500.

Kuvale [[olu](#)] *Users:* 70,000 (2015 L. Jordan). *Status:* 6a (Vigorous).

Kabuverdianu [[kea](#)] *Users:* 65,000 in Angola (2015 Instituto de Apoio ao Emigrante). *Status:* Unestablished. *Worldwide:* Total users in all countries: 1,195,500 (as L1: 1,181,500; as L2: 14,000).

Luba-Lulua [[lua](#)] *Users:* 60,000 in Angola (2018 L. Jordan). *Status:* 6a (Vigorous). *Worldwide:* Total users in all countries: 7,060,000 (as L1: 6,360,000; as L2: 700,000).

Songo [[nsx](#)] *Users:* 50,000 (1978 UBS). *Status:* 5* (Developing).

Luimbi [[lum](#)] *Users:* 43,900 (2000). *Status:* 6a* (Vigorous).

Yombe [[yom](#)] *Users:* 39,400 in Angola (2000). *Status:* 5* (Developing). *Worldwide:* Total users in all countries: 734,400.

Suku [[sub](#)] *Users:* 30,000 in Angola (2018 L. Jordan). *Status:* 6a (Vigorous). *Worldwide:* Total users in all countries: 80,000.

Gciriku [[diu](#)] *Users:* 24,000 in Angola. *Status:* 5* (Dispersed). *Worldwide:* Total users in all countries: 81,700.

Holu [[hol](#)] *Users:* 23,100 in Angola (2000). *Status:* 6a* (Vigorous). *Worldwide:* Total users in all countries: 28,200.

Ndombe [[ndq](#)] *Users:* 22,300 (2000). *Status:* 6a* (Vigorous).

Nkangala [nkn] *Users:* 22,300 (2000). *Status:* 6a* (Vigorous).

Kwangali [kwn] *Users:* 22,000 in Angola (2017 K. Legère). *Status:* 5* (Dispersed). *Worldwide:* Total users in all countries: 192,000.

Himba [her] *Users:* 20,000 in Angola (2018 L. Jordan). *Status:* 6a (Vigorous). *Worldwide:* Total users in all countries: 248,700.

Khongo [lwa] *Users:* 20,000 in Angola (2018 L. Jordan). *Status:* 6a (Vigorous). *Worldwide:* Total users in all countries: 41,000.

Dhimba [dhm] *Users:* 18,000 in Angola (2011). *Status:* 5 (Developing). *Worldwide:* Total users in all countries: 25,300.

Mpinda [pnd] *Users:* 18,000 (2018 L. Jordan). Ethnic population: 30,000 (2018 L. Jordan). *Status:* 6b (Threatened).

Yauma [yax] *Users:* 17,100 in Angola (2000). *Status:* 6a* (Vigorous). *Worldwide:* Total users in all countries: 29,100.

1,000 to 9,999

Nyengo [nye] *Users:* 9,380 (2000). *Status:* 6a* (Vigorous).

Northwestern !Kung [vaj] *Users:* 9,200 in Angola (2015 L. Jordan). Ethnic population: 10,000 (2015 L. Jordan). *Status:* 6b (Threatened). *Worldwide:* Total users in all countries: 15,070.

Kwandu [xdo] *Users:* 6,000 (2016 L. Jordan). Ethnic population: 6,000 (2016 L. Jordan). *Status:* 5 (Developing).

Kung-Ekoka [knw] *Users:* 5,500 in Angola (2016 L. Jordan). *Status:* 6b* (Threatened). *Worldwide:* Total users in all countries: 16,500.

Mbukushu [mhw] *Users:* 4,810 in Angola (2014 L. Jordan). Ethnic population: 7,210 (2014 L. Jordan). *Status:* 6b* (Threatened). *Worldwide:* Total users in all countries: 95,010.

Makoma [sie] *Users:* 3,000 in Angola (2018 L. Jordan). *Status:* 6a (Vigorous). *Worldwide:* Total users in all countries: 19,700.

Mashi [mho] *Users:* 2,630 in Angola (2000). *Status:* 5 (Developing). *Worldwide:* Total users in all countries: 21,430.

100 to 999

Ngendelengo [nql] *Users:* 900 (2016 L. Jordan). Ethnic population: 1,000 (2016 L. Jordan). *Status:* 6a (Vigorous).

Khwedam [xuu] *Users:* 200 in Angola (Brenzinger 2013b). *Status:* 7 (Shifting). *Worldwide:* Total users in all countries: 7,860.

0

Kwadi [[kwz](#)] *Users:* No known L1 speakers. Last known speakers survived into the late 1970s (Winter 1981). *Status:* 10 (Extinct).

Unknown

Kilari [[ldi](#)] *Status:* 6a* (Vigorous). *Worldwide:* Total users in all countries: 159,000.

Languages by Status

In this section the languages of Angola are listed in order of their status within the country as represented by their level on the EGIDs scale (Lewis and Simons 2010). The language entries are reduced to just the information elements that are relevant to assessing the EGIDS level: population, status, language use, language development, and writing.

1 (National)

Portuguese [por] *Users:* 20,390,000 in Angola, all users. L1 users: 13,600,000 in Angola (2021). Includes 60,000 foreign L1 users. In cities, Portuguese increasingly L1 of younger generation. 60% of Angolans use Portuguese, 40% as L1. High level of urbanization due to civil war led to increased use. L2 users: 6,790,000 (2021). *Status:* Statutory national language (2010, Constitution, Article 19(1)). *Lg Use:* An African, Bantuized form of Portuguese [por] is slowly making inroads. *Writing:* Braille script. Latin script, primary usage. *Worldwide:* Total users in all countries: 263,638,850 (as L1: 236,266,650; as L2: 27,372,200).

3 (Wider communication)

Chokwe [cjk] *Users:* 2,210,000 in Angola (2021). *Status:* De facto language of national identity. In 20th century, began to spread in many different ethnic groups in southern Congo and northeastern Angola. Used in trade, fishing, craftsmanship, hunting, farming, and cattle raising. *Lg Use:* Home, church, commerce. Used by all. Positive attitudes. Many also use Portuguese [por]. *Lg Dev:* Literature. Radio. Videos. Dictionary. Grammar. Texts. Bible: 1970–1990. *Writing:* Latin script. *Worldwide:* Total users in all countries: 2,731,700.

Kikongo [kng] *Users:* 3,300,000 in Angola (2020). 2,550,000 Kikongo, 747,000 Fiote. *Status:* De facto language of national identity. *Writing:* Latin script. *Worldwide:* Total users in all countries: 11,316,500 (as L1: 6,316,500; as L2: 5,000,000).

Kimbundu [kmb] *Users:* 1,700,000 in Angola (2015 L. Jordan). Ethnic population: 6,000,000 (2015 L. Jordan). *Status:* Established 15th century. Spread in northwestern Angola under Portuguese colonialism (16th century) and Methodist missionary influence (1880s). *Lg Use:* Used as L2 by Kibala [blv]. *Lg Dev:* Dictionary. Grammar. Bible: 1980. *Writing:* Latin script. *Worldwide:* Total users in all countries: 1,700,160.

Oshiwambo [kua] *Users:* 821,000 in Angola, all users. L1 users: 781,000 in Angola (2021). L2 users: 40,000 (2013 SIL). *Status:* De facto language of national identity. Original language of powerful Kwanyama kingdom of southern Angola and northern Namibia. Spread as language of conquest throughout colonial period until 1917. Currently used in eastern half of Kunene Province in church, market, business, and media domains. *Lg Use:* Used as L2 by Nkumbi [khu], Northwestern !Kung [vaj]. *Lg Dev:* Literature. Dictionary. Grammar. Bible: 1974. *Writing:* Braille script. Latin script, primary usage. *Worldwide:* Total users in all countries:

1,429,000 (as L1: 1,389,000; as L2: 40,000).

Umbundu [[umb](#)] *Users*: 7,810,000 (2021). *Status*: Trade language, particularly for slave and ivory trade, between Ovimbundu people and Portuguese settlers in 1700s. Beginning in 1874 used as church language with arrival of Catholic missionaries. *Lg Dev*: Dictionary. Grammar. Bible: 1963. *Writing*: Latin script.

5 (Developing)

Dhimba [[dhm](#)] *Users*: 18,000 in Angola (2011). *Lg Use*: Used by all. *Lg Dev*: Texts. NT: 2013. *Writing*: Latin script. *Worldwide*: Total users in all countries: 25,300.

Kwandu [[xdo](#)] *Users*: 6,000 (2016 L. Jordan). Ethnic population: 6,000 (2016 L. Jordan). *Lg Use*: Vigorous. All domains. Used by all. Most also use Kuvale [[olu](#)]. Most also use Nyaneka [[nyk](#)]. *Lg Dev*: Bible portions: 2016. *Writing*: Latin script, limited usage.

Luchazi [[lch](#)] *Users*: 400,000 in Angola (2011 S. Floor). *Lg Use*: Home, church, commerce. Used by all. Positive attitudes. Used as L2 by Northwestern !Kung [[vaj](#)]. *Lg Dev*: Grammar. Bible: 1963. *Writing*: Latin script. *Worldwide*: Total users in all countries: 430,900.

Mashi [[mho](#)] *Users*: 2,630 in Angola (2000). *Lg Use*: Used by all. *Writing*: Latin script, developed in 2011. *Worldwide*: Total users in all countries: 21,430.

Mbangala [[mxg](#)] *Users*: 400,000 (2012). *Lg Dev*: NT: 2022. *Writing*: Latin script.

Mbunda [[mck](#)] *Users*: 135,000 in Angola (Johnstone and Mandryk 2001). *Lg Dev*: Dictionary. Bible: 2006. *Writing*: Latin script. *Worldwide*: Total users in all countries: 218,000.

Nkumbi [[khu](#)] *Users*: 713,000 (2021). *Lg Use*: Used by all. Also use Oshiwambo [[kua](#)]. *Lg Dev*: Bible portions: 1985–1987. *Writing*: Latin script.

Nyaneka [[nyk](#)] *Users*: 1,150,000 (2021). *Lg Use*: High vitality across the whole language area (2013 SIL). Used by all. Positive attitudes. Used as L2 by Kung-Ekoka [[knw](#)], Kwandu [[xdo](#)]. *Lg Dev*: TV. Texts. NT: 2005. *Writing*: Latin script, developed in 2008.

Nyemba [[nba](#)] *Users*: 1,050,000 in Angola (2021). *Lg Use*: Used as L2 by Northwestern !Kung [[vaj](#)]. *Lg Dev*: Bible portions: 1955. *Writing*: Latin script. *Worldwide*: Total users in all countries: 1,059,540.

Ruund [[rnd](#)] *Users*: 98,500 in Angola (2000). *Writing*: Latin script. *Worldwide*: Total users in all countries: 251,500.

Songo [[nsx](#)] *Users*: 50,000 (1978 UBS). *Lg Dev*: NT: 2021. *Writing*: Latin script.

Yombe [[yom](#)] *Users*: 39,400 in Angola (2000). *Writing*: Latin script. *Worldwide*: Total users in all countries: 734,400.

5 (Dispersed)

Gciriku [[diu](#)] *Users*: 24,000 in Angola. *Lg Use*: Positive attitudes. *Writing*: Latin script.

Worldwide: Total users in all countries: 81,700.

Kwangali [kwn] *Users:* 22,000 in Angola (2017 K. Legère). *Writing:* Latin script. *Worldwide:* Total users in all countries: 192,000.

Lunda [lun] *Users:* 178,000 in Angola (Johnstone and Mandryk 2001). *Writing:* Latin script. *Worldwide:* Total users in all countries: 403,000.

Luvale [lue] *Users:* 339,000 in Angola (2021). *Writing:* Latin script. *Worldwide:* Total users in all countries: 510,000.

6a (Vigorous)

Himba [her] *Users:* 20,000 in Angola (2018 L. Jordan). *Lg Use:* Used by all. *Writing:* Latin script. *Worldwide:* Total users in all countries: 248,700.

Holu [hol] *Users:* 23,100 in Angola (2000). *Lg Dev:* Bible portions: 1943–1956. *Writing:* Latin script. *Worldwide:* Total users in all countries: 28,200.

Khongo [lwa] *Users:* 20,000 in Angola (2018 L. Jordan). *Lg Use:* Vigorous. Used by all. *Worldwide:* Total users in all countries: 41,000.

Kibala [blv] *Users:* 950,000 (2016 L. Jordan). Ethnic population: 1,030,000 (2016 L. Jordan). *Lg Use:* Home, church, commerce. Used by all. Positive attitudes. Also use Kimbundu [kmb]. Also use Portuguese [por]. *Lg Dev:* Radio. *Writing:* Unwritten.

Kilari [ldi] *Writing:* Latin script. *Worldwide:* Total users in all countries: 159,000.

Kuvale [olu] *Users:* 70,000 (2015 L. Jordan). *Lg Use:* All domains. Used by all. Positive attitudes. A few also use Portuguese [por]. Used as L2 by Kwandu [xdo], Ngendelengo [nql]. *Writing:* Latin script.

Luba-Lulua [lua] *Users:* 60,000 in Angola (2018 L. Jordan). *Lg Use:* Vigorous. Used by all. *Writing:* Latin script. *Worldwide:* Total users in all countries: 7,060,000 (as L1: 6,360,000; as L2: 700,000).

Luimbi [lum] *Users:* 43,900 (2000). *Lg Dev:* Bible portions: 1935. *Writing:* Latin script.

Makoma [sie] *Users:* 3,000 in Angola (2018 L. Jordan). *Lg Use:* Vigorous. Used by all. *Writing:* Latin script, developed in 2011. *Worldwide:* Total users in all countries: 19,700.

Mbwela [mfu] *Users:* 222,000 (Johnstone and Mandryk 2001). *Writing:* Latin script.

Ndombe [ndq] *Users:* 22,300 (2000). *Writing:* Unwritten.

Ngendelengo [nql] *Users:* 900 (2016 L. Jordan). Ethnic population: 1,000 (2016 L. Jordan). *Lg Use:* Used by all. Also use Kuvale [olu], especially among the youth. *Writing:* Unwritten.

Nkangala [nkn] *Users:* 22,300 (2000). *Writing:* Latin script.

Nyengo [nye] *Users:* 9,380 (2000). *Writing:* Unwritten.

Suku [sub] *Users:* 30,000 in Angola (2018 L. Jordan). *Lg Use:* Vigorous. Used by all. *Writing:* Latin script, no longer in use. *Worldwide:* Total users in all countries: 80,000.

Yaka [yaf] *Users:* 200,000 in Angola (2000 SIL). *Writing:* Latin script. *Worldwide:* Total users in all countries: 900,000.

Yauma [yax] *Users:* 17,100 in Angola (2000). *Lg Dev:* Bible portions: 1978. *Writing:* Latin script, plans for future development using this script. *Worldwide:* Total users in all countries: 29,100.

6b (Threatened)

Hungu [hng] *Users:* 500,000 (2018 L. Jordan). Ethnic population: 800,000 (2018 L. Jordan). *Lg Use:* Some young people, all adults. *Writing:* Unwritten.

Kung-Ekoka [knw] *Users:* 5,500 in Angola (2016 L. Jordan). *Lg Use:* Many also use Nyaneka [nyk]. *Writing:* Latin script. *Worldwide:* Total users in all countries: 16,500.

Mbukushu [mhw] *Users:* 4,810 in Angola (2014 L. Jordan). Ethnic population: 7,210 (2014 L. Jordan). *Lg Use:* Used as L2 by Khwedam [xuu]. *Writing:* Latin script. *Worldwide:* Total users in all countries: 95,010.

Mpinda [pnd] *Users:* 18,000 (2018 L. Jordan). Ethnic population: 30,000 (2018 L. Jordan). *Lg Use:* Some young people, all adults. Mpinda children learn Portuguese [por] even before they enter school. Adults often use Portuguese when speaking with children or age peers and at church, while they use Mpinda with parents and elders and perhaps with their spouses (2018 L. Jordan). Mixed attitudes. All also use Portuguese [por]. *Writing:* Unwritten.

Northwestern !Kung [vaj] *Users:* 9,200 in Angola (2015 L. Jordan). Ethnic population: 10,000 (2015 L. Jordan). *Lg Use:* Home. Some young people, all adults. Mixed attitudes. Many also use Luchazi [lch]. Many also use Nyemba [nba]. Many also use Oshiwambo [kua]. *Lg Dev:* Radio. *Writing:* Unwritten. *Worldwide:* Total users in all countries: 15,070.

7 (Shifting)

Khwedam [xuu] *Users:* 200 in Angola (Brenzinger 2013b). *Lg Use:* Shifting to Mbukushu [mhw]. *Writing:* Latin script, developed in 2006. *Worldwide:* Total users in all countries: 7,860.

10 (Extinct)

Kwadi [kwz] *Users:* No known L1 speakers. Last known speakers survived into the late 1970s (Winter 1981). *Lg Use:* Used regularly (Westphal 1971); no remaining speakers (Winter 1981). *Writing:* Unwritten.

Unestablished

Kabuverdianu [[kea](#)] *Users:* 65,000 in Angola (2015 Instituto de Apoio ao Emigrante). *Lg Use:* Most also use Portuguese [[por](#)]. *Writing:* Latin script. *Worldwide:* Total users in all countries: 1,195,500 (as L1: 1,181,500; as L2: 14,000).

Languages by Province

This index gives an alphabetical listing of the top-level administrative subdivisions within Angola. Under the name of each province is a list of the language communities that are located within its area.

Bengo

Hungu [hng], 12
Kikongo [kng], 13
Kimbundu [kmb], 13
Umbundu [umb], 20

Benguela

Dhimba [dhm], 11
Kuvale [olu], 14
Ndombe [ndq], 17
Nyaneka [nyk], 18
Umbundu [umb], 20

Bié

Chokwe [cj], 11
Luimbi [lum], 15
Mbwela [mfu], 17
Nyemba [nba], 18
Songo [nsx], 19
Umbundu [umb], 20

Cabinda

Kikongo [kng], 13
Yombe [yom], 20

Cunene

Dhimba [dhm], 11
Himba [her], 11
Kung-Ekoka [knw], 14
Mbwela [mfu], 17
Nkumbi [khu], 17
Northwestern !Kung [vaj], 18
Nyaneka [nyk], 18
Nyemba [nba], 18
Oshiwambo [kua], 19

Huambo

Northwestern !Kung [vaj], 18
Nyemba [nba], 18

Umbundu [umb], 20

Huíla

Dhimba [dhm], 11
Kung-Ekoka [knw], 14
Mbwela [mfu], 17
Nkumbi [khu], 17
Nyaneka [nyk], 18
Nyemba [nba], 18
Umbundu [umb], 20

Kuando Kubango

Gciriku [diu], 11
Khwedam [xuu], 12
Kung-Ekoka [knw], 14
Kwangali [kwn], 14
Luchazi [lch], 15
Mashi [mho], 16
Mbukushu [mhw], 16
Mbwela [mfu], 17
Nkangala [nkn], 17
Northwestern !Kung [vaj], 18
Nyemba [nba], 18
Nyengo [nye], 18
Oshiwambo [kua], 19
Yauma [yax], 20

Kuanza Norte

Kikongo [kng], 13
Kimbundu [kmb], 13

Kuanza Sul

Hungu [hng], 12
Kibala [blv], 12
Kimbundu [kmb], 13
Mpinda [pnd], 17
Songo [nsx], 19
Umbundu [umb], 20

Luanda

Kimbundu [kmb], 13
Mbangala [mxg], 16

Lunda Norte

Chokwe [cj], 11
Holu [hol], 12
Khongo [lwa], 12
Luba-Lulua [lua], 15
Lunda [lun], 15
Mbangala [mxg], 16
Ruund [rnd], 19
Songo [nsx], 19
Suku [sub], 20

Lunda Sul

Chokwe [cj], 11
Lunda [lun], 15
Mbangala [mxg], 16

Malanje

Chokwe [cj], 11
Holu [hol], 12
Kikongo [kng], 13
Kimbundu [kmb], 13
Luimbi [lum], 15
Mbangala [mxg], 16
Songo [nsx], 19
Yaka [yaf], 20

Moxico

Chokwe [cj], 11

Luchazi [lch], 15

Lunda [lun], 15

Luvale [lue], 15

Makoma [sie], 16

Mashi [mho], 16

Mbunda [mck], 16

Mbwela [mfu], 17

Nkangala [nkn], 17

Yauma [yax], 20

Namibe

Dhimba [dhm], 11

Himba [her], 11

Kuvale [olu], 14

Kwadi [kwz], 14

Kwandu [xdo], 14

Ngendelengo [nql], 17

Nyaneka [nyk], 18

Umbundu [umb], 20

Uíge

Hungu [hng], 12

Kikongo [kng], 13

Kimbundu [kmb], 13

Mbangala [mxg], 16

Yaka [yaf], 20

Zaire

Kikongo [kng], 13

Kilari [ldi], 13

Languages by Family

This index gives an alphabetical listing of the linguistic classifications used for the established languages of Angola. The entries in this index represent the full path in the linguistic family tree from the highest level grouping down to the lowest. All the languages listed in the same entry are members of the same lowest-level subgroup. The referenced page contains the main entry that describes the language.

Indo-European, Italic, Romance, Italo-Western, Western, Gallo-Iberian, Ibero-Romance, West Iberian, Portuguese-Galician

Portuguese [por], 19

Khoe-Kwadi, Khoe, Kalahari Khoe, Northwest

Khwedam [xuu], 12

Khoe-Kwadi, Kwadi

Kwadi [kwz], 14

Kx'a, !Kung

Kung-Ekoka [knw], 14

Northwestern !Kung [vaj], 18

Niger-Congo, Atlantic-Congo, Volta-Congo, Benue-Congo, Bantoid, Southern, Narrow Bantu, Central, H, Kikongo (H.16)

Kiyombe [yom], 20

Koongo [kng], 13

Laari [ldi], 13

Niger-Congo, Atlantic-Congo, Volta-Congo, Benue-Congo, Bantoid, Southern, Narrow Bantu, Central, H, Kimbundu (H.21)

Kimbundu [kmb], 13

Mpinda [pnd], 17

Niger-Congo, Atlantic-Congo, Volta-Congo, Benue-Congo, Bantoid, Southern, Narrow Bantu, Central, H, Kimbundu (H.23)

Kibala [blv], 12

Niger-Congo, Atlantic-Congo, Volta-Congo, Benue-Congo, Bantoid, Southern, Narrow Bantu, Central, H, Kimbundu (H.24)

Songo [nsx], 19

Niger-Congo, Atlantic-Congo, Volta-Congo, Benue-Congo, Bantoid, Southern, Narrow Bantu, Central, H, Yaka (H.31)

Yaka [yaf], 20

Niger-Congo, Atlantic-Congo, Volta-Congo, Benue-Congo, Bantoid, Southern, Narrow Bantu, Central, H, Yaka (H.32)

Hungu [hng], 12

Suku [sub], 20

Niger-Congo, Atlantic-Congo, Volta-Congo, Benue-Congo, Bantoid, Southern, Narrow Bantu, Central, H, Yaka (H.34)

Mbangala [mxg], 16

Niger-Congo, Atlantic-Congo, Volta-Congo, Benue-Congo, Bantoid, Southern, Narrow Bantu, Central, K, Ciokwe-Luchazi (K.11)

Chokwe [cj], 11

Niger-Congo, Atlantic-Congo, Volta-Congo, Benue-Congo, Bantoid, Southern, Narrow Bantu, Central, K, Ciokwe-Luchazi (K.12)

Luimbi [lum], 15

Nyemba [nba], 18

Niger-Congo, Atlantic-Congo, Volta-Congo, Benue-Congo, Bantoid, Southern, Narrow Bantu, Central, K, Ciokwe-Luchazi (K.13)

Luchazi [lch], 15

Niger-Congo, Atlantic-Congo, Volta-Congo, Benue-Congo, Bantoid, Southern, Narrow Bantu, Central, K, Ciokwe-Luchazi (K.14)

Luvale [lue], 15

Niger-Congo, Atlantic-Congo, Volta-Congo, Benue-Congo, Bantoid, Southern, Narrow Bantu, Central, K, Ciokwe-Luchazi (K.15)

Mbunda [mck], 16

Niger-Congo, Atlantic-Congo, Volta-Congo, Benue-Congo, Bantoid, Southern, Narrow Bantu, Central, K, Ciokwe-Luchazi (K.16)

Nyengo [nye], 18

Yauma [yax], 20

Niger-Congo, Atlantic-Congo, Volta-Congo, Benue-Congo, Bantoid, Southern, Narrow Bantu, Central, K, Ciokwe-Luchazi (K.17)

Mbwela [mfu], 17

Niger-Congo, Atlantic-Congo, Volta-Congo, Benue-Congo, Bantoid, Southern, Narrow Bantu, Central, K, Ciokwe-Luchazi (K.18)

Nkangala [nkn], 17

Niger-Congo, Atlantic-Congo, Volta-Congo, Benue-Congo, Bantoid, Southern, Narrow Bantu, Central, K, Luyana (K.33)

Kwangali [kwn], 14

Niger-Congo, Atlantic-Congo, Volta-Congo, Benue-Congo, Bantoid, Southern, Narrow Bantu, Central, K, Luyana (K.332)

Gciriku [diu], 11

Niger-Congo, Atlantic-Congo, Volta-Congo, Benue-Congo, Bantoid, Southern, Narrow Bantu, Central, K, Luyana (K.333)

Mbukushu [mhw], 16

Niger-Congo, Atlantic-Congo, Volta-Congo, Benue-Congo, Bantoid, Southern, Narrow Bantu, Central, K, Luyana (K.34)

Mashi [mho], 16

Niger-Congo, Atlantic-Congo, Volta-Congo, Benue-Congo, Bantoid, Southern, Narrow Bantu, Central, K, Luyana (K.35)

Simaa [sie], 16

Niger-Congo, Atlantic-Congo, Volta-Congo, Benue-Congo, Bantoid, Southern, Narrow Bantu, Central, L, Luba (L.31)

Luba-Kasai [lua], 15

Niger-Congo, Atlantic-Congo, Volta-Congo, Benue-Congo, Bantoid, Southern, Narrow Bantu, Central, L, Lunda (L.52)

Lunda [lun], 15

Niger-Congo, Atlantic-Congo, Volta-Congo, Benue-Congo, Bantoid, Southern, Narrow Bantu, Central, L, Lunda (L.53)

Ruund [rnd], 19

Niger-Congo, Atlantic-Congo, Volta-Congo, Benue-Congo, Bantoid, Southern, Narrow Bantu, Central, L, Pende (L.12)

Holu [hol], 12

Niger-Congo, Atlantic-Congo, Volta-Congo, Benue-Congo, Bantoid, Southern, Narrow Bantu, Central, L, Songe (L.221)

Lwalu [lwa], 12

Niger-Congo, Atlantic-Congo, Volta-Congo, Benue-Congo, Bantoid, Southern, Narrow Bantu, Central, R, Herero (R.30)

Herero [her], 11

Niger-Congo, Atlantic-Congo, Volta-Congo, Benue-Congo, Bantoid, Southern, Narrow Bantu, Central, R, Herero (R.311)

Dhimba [dhm], 11

Niger-Congo, Atlantic-Congo, Volta-Congo, Benue-Congo, Bantoid, Southern, Narrow Bantu, Central, R, Umbundu (R.101)

Kuvale [olu], 14

Ngendelengo [nql], 17

Niger-Congo, Atlantic-Congo, Volta-Congo, Benue-Congo, Bantoid, Southern, Narrow Bantu, Central, R, Umbundu (R.11)

Umbundu [umb], 20

Niger-Congo, Atlantic-Congo, Volta-Congo, Benue-Congo, Bantoid, Southern, Narrow Bantu, Central, R, Umbundu (R.12)

Ndombe [ndq], 17

Niger-Congo, Atlantic-Congo, Volta-Congo, Benue-Congo, Bantoid, Southern, Narrow Bantu, Central, R, Umbundu (R.13)

Kwandu [xdo], 14

Nyaneka [nyk], [18](#)

Niger-Congo, Atlantic-Congo, Volta-Congo, Benue-Congo, Bantoid, Southern, Narrow Bantu, Central, R, Umbundu (R.14)

Nkumbi [khu], [17](#)

Niger-Congo, Atlantic-Congo, Volta-Congo, Benue-Congo, Bantoid, Southern, Narrow Bantu, Central, R, Wambo (R.21)

Oshiwambo [kua], [19](#)

Language Code Index

This index gives an alphabetical listing of all 47 three-letter codes that are used in this work to uniquely identify languages. The referenced page contains the main entry that describes the language. All codes listed are part of the ISO 639-3 standard; see <http://www.sil.org/iso639-3/>.

blv	Kibala, 12	mho	Mashi (Zambia), 16
cjk	Chokwe, 11	mhw	Mbukushu, 16
dhm	Dhimba, 11	mxg	Mbangala, 16
diu	Gciriku, 11	nba	Nyemba, 18
her	Herero, 11	ndq	Ndombe, 17
hng	Hungu, 12	nkn	Nkangala, 17
hol	Holu, 12	nql	Ngendelengo, 17
kea	Kabuverdianu, 12	nsx	Songo (Angola), 19
khu	Nkumbi, 17	nye	Nyengo, 18
kmb	Kimbundu, 13	nyk	Nyaneka, 18
kng	Koongo, 13	olu	Kuvale, 14
knw	Kung-Ekoka, 14	pnd	Mpinda, 17
kua	Oshiwambo, 19	por	Portuguese, 19
kwn	Kwangali, 14	rnd	Ruund, 19
kwz	Kwadi, 14	sie	Simaa, 16
lch	Luchazi, 15	sub	Suku, 20
ldi	Laari, 13	umb	Umbundu, 20
lua	Luba-Kasai, 15	vaj	Northwestern !Kung, 18
lue	Luvale, 15	xdo	Kwandu, 14
lum	Luimbi, 15	xuu	Khwedam, 12
lun	Lunda, 15	yaf	Yaka (Democratic Republic of the Congo), 20
lwa	Lwalu, 12	yax	Yauma, 20
mck	Mbunda, 16	yom	Kiyombe, 20
mfu	Mbwela, 17		

Language Name Index

This index lists every name that appears in the language listings as a primary or alternate name of a language or dialect. The following abbreviations are used in the index entries: *alt.* ‘alternate name for’; *alt. dial.* ‘alternate name for a dialect of’; *dial.* ‘primary name for a dialect of’; *pej. alt.* ‘pejorative alternate name for’; and *pej. alt. dial.* ‘pejorative alternate name for a dialect of’. Each index entry resolves to the primary name for the language with which the indexed name is associated, followed by square brackets containing the unique three-letter language code from ISO 639-3. The referenced page contains the main entry that describes the language. If the language appears on a map, the entry for the primary name also lists page numbers for the maps on which the language occurs.

- Ambaquista**, *alt. dial.* Kimbundu [kmb], 13
- Ambuela**, *alt.* Mbwela [mfu], 17
- Ambuella**, *alt.* Mbwela [mfu], 17
- Bahungu**, *alt.* Hungu [hng], 12
- Bakoroka**, *alt.* Kwadi [kwz], 14
- Balovale**, *alt.* Luvale [lue], 15
- Bambeiro**, *alt. dial.* Kimbundu [kmb], 13
- Bangala**, *alt.* Mbangala [mxg], 16
- Bayombe**, *alt.* Kiyombe [yom], 20
- Black Bushman**, *alt.* Khwedam [xuu], 12
- Bolo**, *dial.* Kibala [blv], 12
- Buma-Kxoe**, *dial.* Khwedam [xuu], 12
- Cabinda**, *alt. dial.* Koongo [kng], 13
- Cangala**, *alt.* Nkangala [nkn], 17
- Cazama**, *alt.* Khwedam [xuu], 12
- Chilu Wunda**, *alt.* Ruund [rnd], 19
- Chiluchazi**, *alt.* Luchazi [lch], 15
- chi-Luchazi**, *alt.* Luchazi [lch], 15
- Chiluimbi**, *alt.* Luimbi [lum], 15
- chiLunda**, *alt.* Lunda [lun], 15
- Chiluvale**, *alt.* Luvale [lue], 15
- Chimba**, *alt.* Dhimba [dhm], 11
- Chimbunda**, *alt.* Mbunda [mck], 16
- Chimbúunda**, *alt.* Mbunda [mck], 16
- Chokwe** [cjk], 11, 22
- Cilenge**, *dial.* Nyaneka [nyk], 18
- Cimbangala**, *alt.* Mbangala [mxg], 16
- Ciokwe**, *alt.* Chokwe [cjk], 11
- Cokwe**, *alt.* Chokwe [cjk], 11
- Congo**, *alt.* Koongo [kng], 13
- Cuangular**, *alt.* Kwangali [kwn], 14
- Cuanhama**, *alt.* Oshiwambo [kua], 19
- Cuanhoca**, *alt.* Kwadi [kwz], 14
- Cuendelengo**, *alt.* Ngendelengo [nql], 17
- Cuepe**, *alt.* Kwadi [kwz], 14
- Curoca**, *alt.* Kwadi [kwz], 14
- Cusso**, *alt.* Mbukushu [mhw], 16
- Dciriku**, *alt.* Gciriku [diu], 11
- Dhimba** [dhm], 11, 22
- Dihungu**, *alt.* Hungu [hng], 12
- Dimba**, *alt.* Dhimba [dhm], 11
- Dirico**, *alt.* Gciriku [diu], 11
- Diriko**, *alt.* Gciriku [diu], 11
- Diriku**, *alt.* Gciriku [diu], 11
- Djok**, *alt.* Chokwe [cjk], 11
- Dombe**, *alt.* Ndombe [ndq], 17
- Dongo**, *alt. dial.* Kimbundu [kmb], 13
- Ekoko-IXû**, *alt.* Kung-Ekoka [knw], 14
- Fiote**, *alt. dial.* Koongo [kng], 13
- Fioti**, *alt. dial.* Koongo [kng], 13
- Gangela**, *alt.* Nyemba [nba], 18
- Ganguela**, *alt.* Nyemba [nba], 18

- Ganguella**, *alt.* Nyemba [nba], 18
Gciriku [diu], 11, 22
Ginga, *alt. dial.* Kimbundu [kmb], 13
Glanda-Khwe, *alt.* Khwedam [xuu], 12
Gova, *alt.* Mbukushu [mhw], 16
Hakawona, *dial.* Dhimba [dhm], 11
Handa, *dial.* Nyaneka [nyk], 18
Hebó, *dial.* Kibala [blv], 12
Hele, *dial.* Umbundu [umb], 20
Herero, *alt.* Herero [her], 11
Himba [her], 11, 22
Holo, *alt.* Holu [hol], 12
Holu [hol], 12, 22
dial. Holu [hol], 12
Hongu, *alt.* Holu [hol], 12
!Hu, *alt.* Kung-Ekoka [knw], 14
Huila, *alt. dial.* Nyaneka [nyk], 18
!Hukwe, *alt.* Khwedam [xuu], 12
Hukwe, *alt.* Khwedam [xuu], 12
Humba, *alt.* Oshiwambo [kua], 19
Humbe, *dial.* Nyaneka [nyk], 18
Hungu [hng], 12, 22
Iaca, *alt.* Yaka [yaf], 20
Iaka, *alt.* Yaka [yaf], 20
Ibinda, *alt. dial.* Koongo [kng], 13
alt. Kiyombe [yom], 20
Iombe, *alt.* Kiyombe [yom], 20
Ipala, *alt.* Kibala [blv], 12
Iyaka, *alt.* Yaka [yaf], 20
Jinga, *alt. dial.* Kimbundu [kmb], 13
Kamaxi, *alt.* Mashi [mho], 16
Khongo [lwa], 12, 22
Khumbi, *alt.* Nkumbi [khu], 17
!Khung, *alt.* Kung-Ekoka [knw], 14
Khwe, *alt.* Khwedam [xuu], 12
Khwedam [xuu], 12, 22
Kibala [blv], 12, 22
Kibala-Ngoya, *alt.* Kibala [blv], 12
Kiholo, *alt.* Holu [hol], 12
Kiholu, *alt.* Holu [hol], 12
Kihungu, *alt.* Hungu [hng], 12
Kikongo [kng], 13, 22
Kikoongo, *alt.* Koongo [kng], 13
Kilari [ldi], 13
Kimanyanga, *dial.* Koongo [kng], 13
Kimbamba, *alt. dial.* Kimbundu [kmb], 13
Kimbari, *alt.* Umbundu [umb], 20
Ki-mbunda, *alt.* Mbunda [mck], 16
Kimbundo, *alt.* Kimbundu [kmb], 13
Kimbundu [kmb], 13, 22
Kimbundu de Kwanza Sul, *alt.* Kibala [blv], 12
Kindibu, *dial.* Koongo [kng], 13
Kindongo, *alt. dial.* Kimbundu [kmb], 13
Kioko, *alt.* Chokwe [cj], 11
Kiombi, *alt.* Kiyombe [yom], 20
Kisama, *dial.* Kimbundu [kmb], 13
Kisikongo, *dial.* Koongo [kng], 13
Kissama, *alt. dial.* Kimbundu [kmb], 13
Kisuku, *alt.* Suku [sub], 20
Kivungunya, *alt. dial.* Kiyombe [yom], 20
Kiwoyo, *alt. dial.* Koongo [kng], 13
Kiyaka, *alt.* Yaka [yaf], 20
Kiyombe, *alt.* Kiyombe [yom], 20
dial. Koongo [kng], 13
Kiyoombi, *alt.* Kiyombe [yom], 20
Kizombo, *dial.* Koongo [kng], 13
Kongo, *alt.* Koongo [kng], 13
Koongo, *alt.* Koongo [kng], 13
Koroka, *alt.* Kwadi [kwz], 14
!Ku, *alt.* Kung-Ekoka [knw], 14
Kuanjama, *alt.* Oshiwambo [kua], 19
Kuanyama, *alt.* Oshiwambo [kua], 19
!Kung, *alt.* Kung-Ekoka [knw], 14

- Kung-Ekoka** [knw], 14, 22
Kuso, *alt.* Mbukushu [mhw], 16
Kuvale [olu], 14, 22
Kwadi [kwz], 14
Kwancama, *alt.* Oshiwambo [kua], 19
Kwando, *alt.* Kwandu [xdo], 14
Kwandu [xdo], 14, 22
Kwangali [kwn], 14, 22
Kwangare, *alt.* Kwangali [kwn], 14
Kwangari, *alt.* Kwangali [kwn], 14
Kwanjama, *alt.* Oshiwambo [kua], 19
Kwanyama, *alt.* Oshiwambo [kua], 19
dial. Oshiwambo [kua], 19
Kwendelengo, *alt.* Ngendelengo [nql], 17
Kxoe, *alt.* Khwedam [xuu], 12
Kxoedam, *alt.* Khwedam [xuu], 12
Laadi, *alt.* Laari [ldi], 13
Laari, *alt.* Laari [ldi], 13
Ladi, *alt.* Laari [ldi], 13
Lari, *alt.* Laari [ldi], 13
Libolo, *alt. dial.* Kibala [blv], 12
Loanda Mbundu, *alt.* Kimbundu [kmb], 13
Loande, *alt.* Kimbundu [kmb], 13
Lovale, *alt.* Luvale [lue], 15
Luanda, *alt.* Kimbundu [kmb], 13
Luba-Kasai, *alt.* Luba-Kasai [lua], 15
Lubale, *alt.* Luvale [lue], 15
Luba-Lulua [lua], 15, 22
Lubolo, *alt. dial.* Kibala [blv], 12
Lucazi, *alt.* Luchazi [lch], 15
Luchazi [lch], 15, 22
Luena, *alt.* Luvale [lue], 15
Luimbe, *alt.* Luimbi [lum], 15
Luimbi [lum], 15, 22
Lujash, *alt.* Luchazi [lch], 15
Lujazi, *alt.* Luchazi [lch], 15
Lunda [lun], 15, 22
alt. Kimbundu [kmb], 13
Lunyaneka, *alt.* Nyaneka [nyk], 18
Lutchaz, *alt.* Luchazi [lch], 15
Lutshase, *alt.* Luchazi [lch], 15
Luunda, *alt.* Ruund [rnd], 19
Luvale [lue], 15, 22
Luxage, *alt.* Luchazi [lch], 15
Lwalu, *alt.* Lwalu [lwa], 12
Lwena, *alt.* Luvale [lue], 15
Lwimbe, *alt.* Luimbi [lum], 15
Lwimbi, *alt.* Luimbi [lum], 15
Makoma [sie], 16, 22
Makoroko, *alt.* Kwadi [kwz], 14
Maligo, *alt.* Northwestern !Kung [vaj], 18
Mambukush, *alt.* Mbukushu [mhw], 16
Mampukush, *alt.* Mbukushu [mhw], 16
Manyo, *alt.* Gciriku [diu], 11
Mashi [mho], 16, 22
dial. Mashi [mho], 16
Masi, *alt.* Mashi [mho], 16
Mbadja, *dial.* Oshiwambo [kua], 19
Mbaka, *dial.* Kimbundu [kmb], 13
Mbala, *dial.* Kiyombe [yom], 20
Mbali, *alt.* Umbundu [umb], 20
Mbalundu, *dial.* Umbundu [umb], 20
Mbamba, *dial.* Kimbundu [kmb], 13
Mbangala [mxg], 16, 22
dial. Mbangala [mxg], 16
Mbarakwena, *pej. alt.* Khwedam [xuu], 12
Mbarakwengo, *pej. alt.* Khwedam [xuu], 12
Mbari, *alt.* Umbundu [umb], 20
Mbogedo, *alt.* Gciriku [diu], 11
Mboka, *dial.* Koongo [kng], 13
Mbuela, *alt.* Mbwela [mfu], 17
Mbukuhu, *alt.* Mbukushu [mhw], 16
Mbukushi, *alt.* Mbukushu [mhw], 16

- Mbukushu** [mhw], 16, 22
Mbunda [mck], 16, 22
M'bundo, *alt.* Umbundu [umb], 20
Mbundu, *alt.* Kimbundu [kmb], 13
alt. Umbundu [umb], 20
Mbundu Benguella, *alt.* Umbundu [umb], 20
Mbúunda, *alt.* Mbunda [mck], 16
Mbwela [mfu], 17, 22
Mbwera, *alt.* Mbwela [mfu], 17
Mbwĩ, *dial.* Kibala [blv], 12
Minungo, *dial.* Chokwe [cjk], 11
Mpinda [pnd], 17, 22
Muatiamvua, *alt.* Ruund [rnd], 19
Mucoroca, *alt.* Kwadi [kwz], 14
Mucubal, *alt.* Kuvale [olu], 14
Muhumbi, *alt.* Nkumbi [khu], 17
Muila, *alt. dial.* Nyaneka [nyk], 18
Mumbala, *alt. dial.* Kiyombe [yom], 20
Musuku, *alt.* Suku [sub], 20
Mwila, *dial.* Nyaneka [nyk], 18
Nano, *alt.* Umbundu [umb], 20
N'bundo, *alt.* Kimbundu [kmb], 13
Nbundu, *alt.* Kimbundu [kmb], 13
Ndingi, *dial.* Koongo [kng], 13
Ndinzi, *alt. dial.* Koongo [kng], 13
Ndombe [ndq], 17, 22
Ndongo, *dial.* Kimbundu [kmb], 13
Ngambwe, *dial.* Nyaneka [nyk], 18
Ngangala, *alt.* Nkangala [nkn], 17
Ngangela, *alt.* Nyemba [nba], 18
Nganguela, *alt.* Nyemba [nba], 18
Ngendelengo [nql], 17, 22
Ngola, *dial.* Kimbundu [kmb], 13
Ngongembo, *dial.* Kimbundu [kmb], 13
Ngoongo, *dial.* Yaka [yaf], 20
Ngoya, *alt.* Kibala [blv], 12
N'Guendelengo, *alt.* Ngendelengo [nql], 17
Ngumbi, *alt.* Nkumbi [khu], 17
Nhaneca, *alt.* Nyaneka [nyk], 18
Nhaneka, *alt.* Nyaneka [nyk], 18
Nhemba, *alt.* Nyemba [nba], 18
Nhengo, *alt.* Nyengo [nye], 18
Njinga, *dial.* Kimbundu [kmb], 13
Nkangala [nkn], 17, 22
Nkanu, *alt. dial.* Koongo [kng], 13
Nkhumbi, *alt.* Nkumbi [khu], 17
Nkumbi [khu], 17, 22
Nkumbi-mulondo, *dial.* Nkumbi [khu], 17
North Kwandu, *dial.* Mashi [mho], 16
North Mbundu, *alt.* Kimbundu [kmb], 13
Northern Lunda, *alt.* Ruund [rnd], 19
Northwestern !Kung [vaj], 18, 22
Northwestern !Xun, *alt.* Northwestern !Kung [vaj], 18
Nsongo, *alt.* Songo [nsx], 19
Nyaneka [nyk], 18, 22
dial. Nyaneka [nyk], 18
Nyemba [nba], 18, 22
Nyengo [nye], 18, 22
Ochikwanyama, *alt.* Oshiwambo [kua], 19
Ocinkumbi, *alt.* Nkumbi [khu], 17
!O!kung, *alt.* Northwestern !Kung [vaj], 18
OluCilenge, *alt. dial.* Nyaneka [nyk], 18
Oludhimba, *alt.* Dhimba [dhm], 11
OluHumbe, *alt. dial.* Nyaneka [nyk], 18
Olukuvale, *alt.* Kuvale [olu], 14
Olukwandu, *alt.* Kwandu [xdo], 14
Olumbali, *alt.* Umbundu [umb], 20
Olumuila, *alt. dial.* Nyaneka [nyk], 18
Oluñaneka, *alt.* Nyaneka [nyk], 18
Olungambwe, *alt. dial.* Nyaneka [nyk], 18
Olungendelengo, *alt.* Ngendelengo [nql], 17
Olungkhumbi, *alt.* Nkumbi [khu], 17
Olunyaneka, *alt.* Nyaneka [nyk], 18

- Oluthimba**, *alt.* Dhimba [dhm], 11
Oluzimba, *alt.* Dhimba [dhm], 11
Oshikuanjama, *alt.* Oshiwambo [kua], 19
Oshikwanyama, *alt.* Oshiwambo [kua], 19
Oshiwambo [kua], 19, 22
Osikuanjama, *alt.* Oshiwambo [kua], 19
Otjidhimba, *alt.* Dhimba [dhm], 11
Otjihimba, *alt.* Herero [her], 11
Otjingumbi, *alt.* Nkumbi [khu], 17
!O!ung, *alt.* Northwestern !Kung [vaj], 18
Ovakwandu, *alt.* Kwandu [xdo], 14
Ovambo, *alt.* Oshiwambo [kua], 19
Ovangendelengo, *alt.* Ngendelengo [nql], 17
Ovazimba, *alt.* Dhimba [dhm], 11
Ovimbundu, *alt.* Umbundu [umb], 20
Oxikuanjama, *alt.* Oshiwambo [kua], 19
!O!Xun, *alt.* Northwestern !Kung [vaj], 18
Pala, *alt.* Kibala [blv], 12
Pende, *alt. dial.* Koongo [kng], 13
Ponda, *alt.* Luchazi [lch], 15
Português, *alt.* Portuguese [por], 19
Portuguese [por], 19
Quibala, *alt.* Kibala [blv], 12
Quioco, *alt.* Chokwe [cjk], 11
Quissama, *alt. dial.* Kimbundu [kmb], 13
Qxû, *alt.* Kung-Ekoka [knw], 14
Rugciriku, *alt.* Gciriku [diu], 11
Rukwángali, *alt.* Kwangali [kwn], 14
Rukwangari, *alt.* Kwangali [kwn], 14
Rumanyo, *alt.* Gciriku [diu], 11
Ruund [rnd], 19, 22
alt. Lunda [lun], 15
Ruwund, *alt.* Ruund [rnd], 19
Sama, *alt. dial.* Kimbundu [kmb], 13
Sambio, *alt. dial.* Kwangali [kwn], 14
Sambiu, *alt. dial.* Kwangali [kwn], 14
Sambyu, *alt. dial.* Kwangali [kwn], 14
San Salvador Kongo, *alt. dial.* Koongo [kng], 13
Schekere, *alt.* Khwedam [xuu], 12
Sekela, *alt.* Northwestern !Kung [vaj], 18
Sele, *alt. dial.* Umbundu [umb], 20
Sende, *dial.* Kibala [blv], 12
Shambyu, *dial.* Kwangali [kwn], 14
Shimbogedu, *alt.* Gciriku [diu], 11
Shimbwera, *alt.* Mbwela [mfu], 17
Shioko, *alt.* Chokwe [cjk], 11
Shisambyu, *alt. dial.* Kwangali [kwn], 14
Sikwangali, *alt.* Kwangali [kwn], 14
Simaa, *alt.* Simaa [sie], 16
Simba, *alt.* Dhimba [dhm], 11
Songo [nsx], 19, 22
South East Kongo, *dial.* Koongo [kng], 13
South Kongo, *dial.* Koongo [kng], 13
South Kwandu, *dial.* Mashi [mho], 16
South Mbundu, *alt.* Umbundu [umb], 20
Suku [sub], 20, 22
Sungu, *alt.* Songo [nsx], 19
Tchavikwa, *dial.* Dhimba [dhm], 11
Tchokwé, *alt.* Chokwe [cjk], 11
Thimbukushu, *alt.* Mbukushu [mhw], 16
Tjimba, *alt.* Dhimba [dhm], 11
Tschiokloe, *alt.* Chokwe [cjk], 11
Tshokwe, *alt.* Chokwe [cjk], 11
Ucela, *dial.* Kibala [blv], 12
Ucokwe, *alt.* Chokwe [cjk], 11
Ukhongo, *alt.* Lwalu [lwa], 12
Ulanda, *dial.* Chokwe [cjk], 11
Umbangala, *alt.* Mbangala [mxg], 16
Umbundo, *alt.* Umbundu [umb], 20
Umbundu [umb], 20, 22
Uruund, *alt.* Ruund [rnd], 19
Vakwángali, *alt.* Kwangali [kwn], 14
Vasekela Bushman, *alt.* Northwestern !Kung

- [vaj], 18
- Vasekele**, *alt.* Northwestern !Kung [vaj], 18
- Vasorontu**, *alt. dial.* Kwadi [kwz], 14
- Vazama**, *alt.* Khwedam [xuu], 12
- Vungunya**, *dial.* Kiyombe [yom], 20
- Wambo**, *alt.* Oshiwambo [kua], 19
- Water Bushmen**, *alt.* Khwedam [xuu], 12
- West Kongo**, *dial.* Koongo [kng], 13
- !Xu**, *alt.* Kung-Ekoka [knw], 14
- Xu**, *alt.* Khwedam [xuu], 12
- Xuhwe**, *alt.* Khwedam [xuu], 12
- !Xun**, *alt.* Kung-Ekoka [knw], 14
alt. Northwestern !Kung [vaj], 18
- Xun**, *alt.* Khwedam [xuu], 12
- !Xung**, *alt.* Kung-Ekoka [knw], 14
- Yaka** [yaf], 20, 22
dial. Yaka [yaf], 20
- Yauma** [yax], 20, 22
- Yeci**, *dial.* Holu [hol], 12
- Yombe** [yom], 20, 22
- Yombe Classique**, *alt. dial.* Kiyombe [yom], 20
- Yongo**, *dial.* Mbangala [mxg], 16
- Zama**, *alt.* Khwedam [xuu], 12
- Zemba**, *alt.* Dhimba [dhm], 11
- Zombo**, *alt. dial.* Koongo [kng], 13
- Zoombo**, *alt. dial.* Koongo [kng], 13
- Zorotua**, *dial.* Kwadi [kwz], 14

Bibliography

- Bendor-Samuel, J. and R. L. Hartell (eds.). 1989. *The Niger-Congo languages: A classification and description of Africa's largest language family*. Lanham, MD: University Press of America.
- Brenzinger, M. 2013b. The twelve modern Khoisan languages. In A. Witzlack-Makarevich and M. Ernszt (eds.), *Khoisan languages and linguistics, Proceedings of the 3rd international symposium, July 6–10, 2008*, pp. 1–31. Cologne: Rüdiger Köppe Verlag.
- Fernandes, J. and Z. Ntondo. 2002. *Angola: Povos e lingua*. Luanda, Angola: Editorial Nzila.
- Johnstone, P. and J. Mandryk. 2001. *Operation world*. Waynesboro: Paternoster Lifestyle.
- Lewis, M. P. and G. F. Simons. 2010. Assessing endangerment: Expanding Fishman's GIDS. *Revue Roumaine de Linguistique* 55(2):103–120. http://www.lingv.ro/RRL_2_2010_art01Lewis.pdf. Accessed 11 January 2011.
- Redinha, J. 1970. *Distribuição étnica da Província de Angol*. 6th edition. Angola: Centro de Informação e Turismo de Angola.
- Welmers, W. E. 1971a. Checklist of languages and dialect names. In T. A. Sebeok (ed.), *Linguistics in sub-Saharan Africa*, pp. 759–900. Current Trends in Linguistics 7. The Hague: Mouton.
- Westphal, E. O. J. 1971. The click languages of southern and eastern Africa. In T. A. Sebeok (ed.), *Linguistics in sub-Saharan Africa*, pp. 367–420. Current Trends in Linguistics 7. The Hague: Mouton.
- Winter, J. C. 1981. Die Khoisan-Familie. Much needed discussion of the conflicting classification of Khoisan languages. In B. Heine, T. C. Schadeberg, and E. Wolff (eds.), *Die Sprachen Afrikas: Ein Handbuch*, pp. 329–374. Hamburg: Helmut Buske Verlag.