

# Ethnologue: Languages of Bangladesh

## Twenty-sixth edition data

David M. Eberhard, Gary F. Simons, and Charles D. Fennig, Editors

Based on information from the *Ethnologue*, 26th edition:

Eberhard, David M., Gary F. Simons, and Charles D. Fennig (eds.). 2023.  
*Ethnologue: Languages of the World*. Twenty-sixth edition. Dallas, Texas:  
SIL International. Online: <http://www.ethnologue.com>.

*For personal use only*

Permission to distribute or reuse this work (in whole or in part)  
may be obtained through the Copyright Clearance Center at  
<http://www.copyright.com>.

## Contents

List of Abbreviations	3
How to Use This Digest	4
Country Overview	6
Language Status Profile	7
Statistical Summaries	8
Alphabetical Listing of Languages	11
Language Maps	23
Languages by Population	28
Languages by Status	32
Languages by Division	38
Languages by Family	39
Language Code Index	41
Language Name Index	42
Bibliography	46

Copyright © 2023 by SIL International

*All rights reserved.* No part of this publication may be reproduced, redistributed, or transmitted in any form or by any means—electronic, mechanical, photocopying, recording, or otherwise—without the prior written permission of SIL International, with the exception of brief excerpts in articles or reviews.

## List of Abbreviations

A	Agent in constituent word order
<i>alt.</i>	alternate name for
<i>alt. dial.</i>	alternate dialect name for
AOV	Agent-Object-Verb
C	Consonant in canonical syllable patterns
<i>Class</i>	Language classification
CPPDCE	Convention on the Protection and Promotion of the Diversity of Cultural Expressions (2005)
CSICH	Convention for the Safeguarding of Intangible Cultural Heritage (2003)
DBS	Deaf Bible Society
<i>dial.</i>	primary dialect name for
DOOR	Deaf Opportunity Outreach
ICCPR	International Covenant on Civil and Political Rights (1966)
km	kilometer(s)
L1 / L2	first language / second (or other additional) language
<i>Lg Dev</i>	Language development
<i>Lg Use</i>	Language use
LWC	language of wider communication
m	meter(s)
P	Patient in constituent word order
PARADISEC	Pacific And Regional Archive for Digital Sources In Endangered Cultures
<i>pej.</i>	pejorative
pl.	plural
S	Subject in constituent word order
sg.	singular
SIL	SIL International
SOV	Subject-Object-Verb
SVO	Subject-Verb-Object
<i>Type</i>	Typological information
UNCRPD	United Nations Convention on the Rights of Persons with Disabilities (2006)
UNDESA	United Nations Department of Economic and Social Affairs
V	Vowel in canonical syllable patterns

## How to Use This Digest

This *Ethnologue* country digest provides an extract of the information about the language situation in Bangladesh that is published in the 26th edition of *Ethnologue: Languages of the World* (see <http://www.ethnologue.com>), including some ways of presenting the information that are not available in the online version. The digest begins with a “Country Overview” (page 6) and “Statistical Summaries” (page 8) of languages and number of speakers by language size, by language status, and by language family.

The “Alphabetical Listing of Languages” (page 11) provides detailed information on the 44 languages listed in the *Ethnologue* for the country of Bangladesh. This includes languages that are indigenous to the country, languages that have developed well-established multigenerational speaker communities after immigrating in the past, and languages that have a significant presence in the country but are not established (that is, not being transmitted to the next generation within the country). A complete language entry has the following form and content:

**Primary language name** [ISO 639-3 code] (Alternate names). Autonym. *Users*: Country user population. Population stability comment. Population remarks. Monolingual population. Ethnic population. *Location*: Location. *Status*: EGIDS level. Special cases. Language function in country. *Class*: Linguistic classification. Macrolanguage membership. *Dialects*: Dialect names. Intelligibility and dialect relations. Lexical similarity. *Type*: Linguistic typology information. *Lg Use*: Remarks on use of the language. Domains of use. User age range. Language attitudes. Bilingualism remarks. Use as second language. *Lg Dev*: Literacy rates. Literacy remarks. Use in education. Publications and use in media. Revitalization efforts. Language development agencies. *DLS*: Digital support. *Writing*: Scripts used. *Other*: Non-indigenous. General remarks. Religion. *Map*: Map page. *Worldwide*: Total population in all countries. Other countries where used.

See <http://www.ethnologue.com/methodology/#languagePages> for a full description of these information elements. If the autonym contains the “?” character, this indicates a complex non-Roman character that the PDF-creating software we are using is not able to render. We regret the inconvenience.

The “Language Maps” (page 23) show the locations of the listed languages. If the location of a language is given on a map, the *Map* element of the language entry indicates the page number of the map. If the language is identified on a map by name, but that name differs from the primary name in the language entry, the name on the map is given in parentheses. If the language is represented on the map by an index number, rather than by its name, the index number is given following the page number (with a colon as separator).

Many ways of finding languages are provided. “Languages by Population” (page 28) lists the languages in order of their first-language speaker populations. “Languages by Status” (page 32) lists the languages by their level of development or endangerment as measured on EGIDS, the Expanded Graded Intergenerational Disruption Scale (Lewis and Simons 2010). “Languages by

Division” (page 38) lists the top-level administrative subdivisions of Bangladesh and the languages located within each. “Languages by Family” (page 39) lists the languages by their linguistic classifications. “Language Code Index” (page 41) gives an alphabetical listing of all the three-letter codes from ISO 639-3 that are used in this digest to uniquely identify languages. “Language Name Index” (page 42) lists every name that appears in the language listings as a primary or alternate name of a language or dialect. A total of 194 unique names are associated with the 44 languages described in this digest.

Finally, a listing of all the published sources cited within this digest is found in “Bibliography” (page 46). The published sources are cited using standard in-text citations enclosed in parentheses, consisting of the author’s or editor’s surname followed by the year of publication. Unpublished sources including personal communications and unpublished reports are also acknowledged when specific statements or facts are attributed to them. They are identified using in-text citations enclosed in parentheses in which the year of the communication is given first, followed by the source’s first initial and surname. In such a case, there is no corresponding entry in the bibliography.

This digest is designed for use in both digital and print formats. The cross-references are thus rendered as page numbers that are hyperlinks. When using the document in printed form, simply turn to the referenced page by number. When using it in digital form, click on the blue text to jump to the cross-referenced location.

If you believe any of the information about a language in this digest is in error or if you are able to supply missing information, please send your proposed change to the editor using one of the means given below. Provide as much information as possible about the source of your information. Full bibliographic details of published sources are especially helpful.

The preferred method of submitting corrections and additions is to join our Contributor Program by applying at <http://www.ethnologue.com/contributor-program>. With a contributor account you will be entitled to complimentary access to the website and will be able to use the Contribute tab on the page for a language or country in order to propose corrections and additions. The advantage of giving feedback in this way is that it becomes part of the public record on the website. You will also be automatically notified of the editorial action.

Alternatively, you may submit corrections and additions by e-mail to:

Ethnologue\_Editor@sil.org

Or by post to:

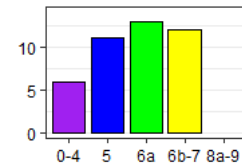
Editor, Ethnologue  
SIL International  
7500 West Camp Wisdom Road  
Dallas, TX 75236, U.S.A.

## Country Overview

Name of country	Bangladesh
Other names	People's Republic of Bangladesh
Population	166,303,000 (2021 UNDESA)
Principal language	Bengali
Literacy rate	74% (2018 World Factbook)
Deaf population	7,596,500
International conventions	CPPDCE (2007), CSICH (2009), ICCPR (2000), UNCRPD (2007)
General references	Campbell and King 2011, Comrie 1987, Hale 1982, Matisoff et al 1996, Voegelin and Voegelin 1977

Language counts

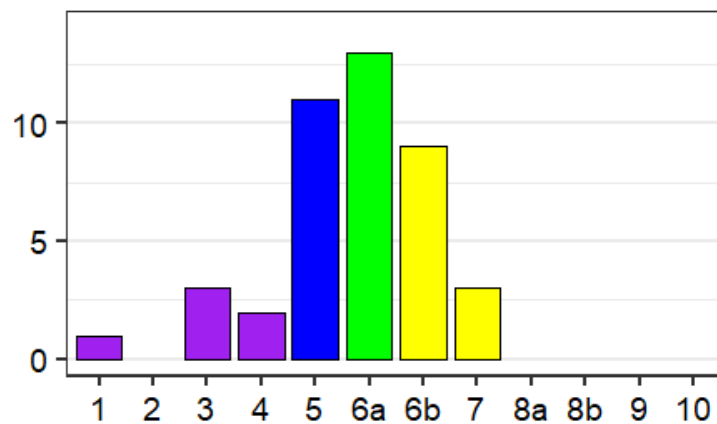
The number of established languages listed for Bangladesh is 42. All are living languages. Of these, 36 are indigenous and 6 are non-indigenous. Furthermore, 6 are institutional, 11 are developing, 13 are vigorous, and 12 are in trouble. Also listed are 2 unestablished languages.



See the next page for an explanation of the summary categories for language vitality used in the above counts and graph.

## Language Status Profile

The following histogram gives a graphic profile of the established languages in Bangladesh with respect to their status of language development versus language endangerment. This includes all of the languages appearing in the “Alphabetical Listing of Languages” (page 11) that report an EGIDS level after *Status*; macrolanguages and unestablished languages are not included in the profile. The horizontal axis plots the estimated level of development or endangerment as measured on the EGIDS scale (Lewis and Simons 2010). The height of each bar indicates the number of languages that are estimated to be at the given level. Consult “Languages by Status” (page 32) in order to see the specific languages for each level.



The color coding of the bars in the histogram above matches the color scheme used in the summary profile graph on the preceding page. In this scheme, the EGIDS levels are grouped as follows:

- Purple = Institutional (EGIDS 0–4) — The language has been developed to the point that it is used and sustained by institutions beyond the home and community.
- Blue = Developing (EGIDS 5) — The language is in vigorous use, with literature in a standardized form being used by some though this is not yet widespread or sustainable.
- Green = Vigorous (EGIDS 6a) — The language is in vigorous use among all generations and remains unstandardized.
- Yellow = In trouble (EGIDS 6b–7) — Intergenerational transmission is in the process of being broken, but the child-bearing generation can still use the language so it is possible that revitalization efforts could restore transmission of the language in the home.
- Red = Dying (EGIDS 8a–9) — The only fluent users (if any) are older than child-bearing age, so it is too late to restore natural intergenerational transmission through the home; a mechanism outside the home would need to be developed.
- Black = Extinct (EGIDS 10) — The language is no longer used and no one retains a sense of ethnic identity associated with the language.

## Statistical Summaries

The “Alphabetical Listing of Languages” (page 11) provides a detailed listing of all the languages of Bangladesh. This section steps back from the detail to offer a summary view of the language situation in the country. Specifically, it offers three numerical tabulations of the living established languages of Bangladesh and their users: by language size, by language status, and by language family.

### Summary by language size

Table 1 summarizes the distribution of living established languages in Bangladesh by number of L1 speakers. The *Population range* column categorizes the sizes of the languages by order of magnitude (in terms of the number of digits in the population of first-language speakers). Consult “Languages by Population” (page 28) for a listing of the specific languages in each range category.

The *Count* column gives the number of living established languages within the specified population range. The *Percent* column gives the share of the count for that population range as a percentage of the total number of languages given at the bottom of the Count column. The *Cumulative* column gives the cumulative sum of the percentage of languages going from top to bottom in the column.

The *Total* column gives the total L1 population of all the languages in the given range category. The second *Percent* column gives the percentage of the total country population as estimated at the bottom of the Total column. Note that if the table has a row for Unknown, representing languages for which the *Ethnologue* does not have a population estimate, the calculation of population percentage is not able to take those languages into account. The final *Cumulative* column gives the cumulative sums of the population percentages going from top to bottom in the column.

**Table 1:** Distribution of languages by number of first-language speakers

Population range	Living languages			Number of speakers		
	Count	Percent	Cumulative	Total	Percent	Cumulative
100,000,000 to 999,999,999	1	2.4	2.4%	130,000,000	79.80411	79.80411%
10,000,000 to 99,999,999	2	4.8	7.1%	23,000,000	14.11919	93.92330%
1,000,000 to 9,999,999	1	2.4	9.5%	6,520,000	4.00248	97.92578%
100,000 to 999,999	9	21.4	31.0%	3,023,000	1.85575	99.78153%
10,000 to 99,999	9	21.4	52.4%	290,000	0.17802	99.95956%
1,000 to 9,999	16	38.1	90.5%	65,130	0.03998	99.99954%
100 to 999	2	4.8	95.2%	750	0.00046	100.00000%
Unknown	2	4.8	100.0%			

Population range	Living languages			Number of speakers		
	<i>Count</i>	<i>Percent</i>	<i>Cumulative</i>	<i>Total</i>	<i>Percent</i>	<i>Cumulative</i>
<i>Totals</i>	42	100.0		162,898,880	100.00000	

### Summary by language status

Table 2 summarizes the distribution of living established languages in Bangladesh by their status in terms of language development or language endangerment. The *EGIDS* column categorizes the languages by their level on the EGIDS scale. Consult “Languages by Status” (page 32) for a listing of the specific languages that have been assigned to each level. Note that the EGIDS level reported here is for the status of the language in Bangladesh. Languages that are also used in other countries may be assigned to a different EGIDS level in those countries.

The next six columns are as in Table 1. In addition, the *Mean* column gives the average L1 population of all the languages with the given EGIDS level and the *Median* column gives the median L1 population for the languages at that level, that is, half of the languages at that level have a higher population and half have a lower population. If there are any languages with an unknown population, these are ignored in the calculation of the mean and the median.

**Table 2:** Distribution of languages by vitality status

EGIDS	Living languages			Number of speakers				
	<i>Count</i>	<i>Percent</i>	<i>Cumulative</i>	<i>Total</i>	<i>Percent</i>	<i>Cumulative</i>	<i>Mean</i>	<i>Median</i>
1	1	2.4	2.4%	130,000,000	79.8041	79.8041%	130,000,000	130,000,000
3	3	7.1	9.5%	19,670,000	12.0750	91.8791%	6,556,667	6,520,000
4	2	4.8	14.3%	235,000	0.1443	92.0233%	117,500	117,500
5	11	26.2	40.5%	10,880,400	6.6792	98.7026%	989,127	75,000
6a	13	31.0	71.4%	927,430	0.5693	99.2719%	71,341	5,000
6b	9	21.4	92.9%	1,177,550	0.7229	99.9948%	130,839	4,700
7	3	7.1	100.0%	8,500	0.0052	100.0000%	2,833	1,000
<i>Totals</i>	42	100.0		162,898,880	100.0000			

### Summary by language family

The genealogical classifications given in the language entries of the “Alphabetical Listing of Languages” (page 11) name 5 different top-level groups. Table 3 summarizes the distribution of living established languages and their L1 populations within these families. The columns are as for table 2, with the exception that *Cumulative* is excluded since there is no inherent ordering of the families.

**Table 3:** Distribution of languages by language family

Language family	Living languages		Number of speakers			
	<i>Count</i>	<i>Percent</i>	<i>Total</i>	<i>Percent</i>	<i>Mean</i>	<i>Median</i>
Austro-Asiatic	9	21.4	254,460	0.2	28,273	2,750
Dravidian	2	4.8	57,000	0.0	28,500	28,500
Indo-European	12	28.6	161,102,600	98.9	13,425,217	250,000
Sign language	1	2.4	815,000	0.5	815,000	815,000
Sino-Tibetan	18	42.9	669,820	0.4	37,212	6,435
<i>Totals</i>	42	100.0	162,898,880	100.0		

## Alphabetical Listing of Languages

**Atong** [aot] (A'tong, Attong). *Users*: 5,400 in Bangladesh. *Location*: Dhaka division: north Netrokona district. *Status*: 6b (Threatened). *Class*: Sino-Tibetan, Tibeto-Burman, Sal, Boro-Garo, Koch. *Lg Use*: Home, village. Some of all ages. Also use Garo [grt] (Van Breugel 2014). Also use Bengali [ben], with good proficiency. Used as L2 by Megam [mef]. *Lg Dev*: Dictionary. Grammar. Texts. *DLS*: Still. *Writing*: Bengali (Bangla) script. Latin script. *Other*: Seen by themselves and other Garos to be Garos, but the languages are not mutually intelligible. Christian. *Map*: 26. *Worldwide*: Total users in all countries: 10,000. Also indigenous in: India.

**Bangla Sign Language** [ins] (Bangla Ishara Vasha, Bangladesh Sign Language, Bangladeshi Sign Language, Bengali Sign Language, Indian Sign Language). *Users*: 815,000 in Bangladesh (2021 DBS/DOOR/SIL). Estimated 500,000–1,000,000, assuming 0.3%–0.6% of the total population. Another estimate: 2,600,000 (2014 Disabled Peoples' International Pacific-Asia Region). *Location*: Scattered. *Status*: 6a\* (Vigorous). *Class*: Sign language, Deaf community sign language. *Dialects*: None known. Related to other sign languages in south Asia, esp. West Bengal Sign Language [wbs], which it resembles more closely than the Delhi variety of Indian Sign Language (Johnson and Johnson 2016); see further comments on Indian Sign Language [ins] in India. *Lg Dev*: TV. Videos. Dictionary. Grammar. *Other*: Non-indigenous. *Worldwide*: Total users in all countries: 6,815,000. Global EGIDS level: 5 (Developing). Indigenous in: India (Indian Sign Language). Unestablished in: Pakistan (Indian Sign Language).

**Bengali** [ben] (Bangala, Bangla-Bhasa). *Users*: 159,000,000 in Bangladesh, all users. L1 users: 130,000,000 in Bangladesh (2017). L2 users: 29,000,000 (2017). *Location*: Widespread. *Status*: 1 (National). Statutory national language (1972, Constitution, Article 3), has been reinforced by the Bengali Language Introduction Act of 1987 to fully enact Article 3 of the Constitution, making the use of Bengali compulsory at all levels of state activities except in foreign affairs. *Class*: Indo-European, Indo-Iranian, Indo-Aryan, Outer Languages, Eastern, Bengali-Assamese. *Dialects*: Barisal, Noakhali, Khulna, Mymensingh. Reportedly similar to Assamese [asm]. Lexical similarity: 40% with Nepali [npi]. *Type*: SOV; postpositions; noun head both initial and final; 3 genders: male, female, neuter; content q-word initial and final; clause constituents indicated by case-marking (5 cases) and word order; verb affixes mark person, number; definite article affix; tense; passives and voice; causatives; comparatives; non-tonal; 35 consonant and 5 vowel phonemes; stress on first syllable. *Lg Use*: Used by all. A few also use War-Jaintia [aml]. Also use Chittagonian [ctg]. *Lg Dev*: Taught in all primary and secondary schools. Taught in most tertiary schools. Fully developed. Bible: 1832–2016. *DLS*: Vital (0.83). *Writing*: Bengali (Bangla) script, primary usage. Braille script. Newa script, no longer in use. *Other*: Muslim. *Maps*: 24, 25, 26, 27. *Worldwide*: Total users in all countries: 272,828,760 (as L1: 233,808,880; as L2: 39,019,880). Also indigenous in: India. Also established in: Nepal, Singapore. Unestablished in: Australia, Belgium, Bhutan, Canada,

Denmark, Finland, France, Germany, Greece, Ireland, Italy, Japan, Kuwait, Malaysia, Mauritius, Myanmar, Netherlands, New Zealand, Oman, Pakistan, Saudi Arabia, South Africa, Spain, Sri Lanka, Sweden, Switzerland, Thailand, United Arab Emirates, United Kingdom, United States.

**Bihari** [urd] (Urdu). *Users*: 250,000 in Bangladesh (2009 UNHR). *Location*: Chittagong, Dhaka, Khulna, and Rangpur divisions; mainly refugee camps in 13 districts. *Status*: 5 (Dispersed). *Class*: Indo-European, Indo-Iranian, Indo-Aryan, Western Hindi, Hindustani. *Type*: SOV; postposition; noun head final; gender (masculine/feminine); no articles; direct and oblique cases; verb affixes mark person, number, gender of subject; passives; tense and aspect; causatives; 35 consonants, 21 vowels; non-tonal; stress on penultimate syllable. *Lg Use*: Home, village, religion, market. Used by all. Positive attitudes. Also use Bengali [ben]. Also use English [eng]. Also use Standard Arabic [arb]. *Lg Dev*: Literacy rate in L1: Below 50%, probably 25%. Literacy rate in L2: 50%. Many more literate in Bengali [ben] than Urdu. Fully developed. Bible: 1843–1998. *Writing*: Arabic script, Naskh variant. Arabic script, Nastaliq variant, primary usage. Braille script. Devanagari script, used in India (Ahmad 2011). *Other*: Non-indigenous. *Maps*: 24, 25, 27. *Worldwide*: Total users in all countries: 231,717,940 (as L1: 70,555,140; as L2: 161,162,800). Global EGIDS level: 1 (National). Indigenous in: India (Urdu), Pakistan (Urdu). Also established in: Fiji (Urdu), Guyana (Urdu), Mauritius (Urdu), Nepal (Urdu), South Africa (Urdu). Unestablished in: Afghanistan (Urdu), Australia (Urdu), Bahrain (Urdu), Belgium (Urdu), Canada (Urdu), Denmark (Urdu), Egypt (Urdu), Finland (Urdu), Germany (Urdu), Iran (Urdu), Iraq (Urdu), Ireland (Urdu), Malaysia (Urdu), New Zealand (Urdu), Norway (Urdu), Oman (Urdu), Qatar (Urdu), Saudi Arabia (Urdu), Singapore (Urdu), Spain (Urdu), Sweden (Urdu), Turkey (Urdu), United Arab Emirates (Urdu), United Kingdom (Urdu), United States (Urdu).

**Bishnupuriya** [bpy] (Bishnupria, Bishnupriya, Bishnupriya Manipuri, Bisna Puriya). *Users*: 40,000 in Bangladesh (2003). 400 monolinguals. *Location*: Sylhet division: south Habiganj district, Sylhet city, 1 village; Moulvibazar district; Sunamganj district, 2 villages. *Status*: 6a (Vigorous). *Class*: Indo-European, Indo-Iranian, Indo-Aryan, Outer Languages, Eastern, Bengali-Assamese. *Dialects*: Rajar Gang, Madai Gang. *Type*: SOV; postpositions, articles before noun heads, question word before the verb, affixes indicate case of noun phrase; CV, CVC, CVV, CCV, VC, VCV; nontonal. *Lg Use*: Vigorous. Home, village. Used by all. Positive attitudes. Also use Bengali [ben]. Also use Meitei [mni]. Used as L2 by Meitei [mni]. *Lg Dev*: Literacy rate in L2: 75% in Bengali [ben]. Those who are literate in Bengali are also able to read Bishnupuriya though they have little practice at doing so. Literature. Radio. Videos. Grammar. Bible portions: 1995–2011. *Writing*: Bengali (Bangla) script. *Other*: Dialects are not attached to localities but exist side by side: Madai Gang (of the village of the queen) and Rajar Gang (of the village of the king). Intelligibility between the 2 caste dialects sufficient to understand complex and abstract discourse. Hindu. *Map*: 26. *Worldwide*: Total users in all countries: 119,600. Global EGIDS level: 5 (Developing). Also indigenous in: India.

**Chak** [ckh] (Sak, Tsak, atsa?). *Users*: 3,000 in Bangladesh (Bradley 2007b). *Location*: Chittagong division: Baishari, Bandarban, Bishar Chokpra; south Naikhongchari area in Arakan Blue

mountains. 14 villages. *Status*: 6a (Vigorous). *Class*: Sino-Tibetan, Tibeto-Burman, Sal, Jingppaw-Asakia, Asakian. *Lg Use*: Used by all. Most also use Marma [rmz], especially those living near Bandarban. Also use Bengali [ben]. Used as L2 by Marma [rmz], Tangchangya [tnv], Tippera [tpe]. *Lg Dev*: Literacy rate in L2: 25% Bengali [ben]. *Dictionary*. *Grammar*. *DLS*: Still. *Other*: Distinct from Chakma [ccp]. Traditional religion. *Map*: 27. *Worldwide*: Total users in all countries: 4,000. Also indigenous in: Myanmar.

**Chakma** [ccp] (Changma Kodha, Sakma, Sangma, Takam). Autonym: Changma Vaj. *Users*: 150,000 in Bangladesh (2007 SIL). *Location*: Chittagong division: Chittagong city, Chittagong Hills area; Khagrachari and Rangamati districts. *Status*: 4 (Educational). *Class*: Indo-European, Indo-Iranian, Indo-Aryan, Outer Languages, Eastern, Bengali-Assamese. *Dialects*: Chakma of India [ccp] understand Bangladesh Chakma with difficulty. Some dialect variation within Myanmar. Lexical similarity: 58%–67% with Tanchangya [tnv]. *Lg Use*: All domains. Used by all. Positive attitudes. Also use Bengali [ben], especially educated people and most men. Also use Chittagonian [ctg]. Used as L2 by Riag [ria]. *Lg Dev*: Literacy rate in L1: 70%. Literacy rate in L2: 70%. Taught in primary schools in grades 1 and 2. *Literature*. *Bible*: 2021. *DLS*: Ascending (0.29). *Writing*: Bengali (Bangla) script. Chakma script. Latin script. *Other*: Buddhist, Christian. *Map*: 27. *Worldwide*: Total users in all countries: 378,000. Also indigenous in: India, Myanmar.

**Chin, Asho** [csh] (Khyang, Khyeng, Qin, Sho, Shoa). Autonym: Asho Chin. *Users*: 4,000 in Bangladesh (2011). *Location*: Chittagong division: Bandarban, Chittagong, and Rangamati districts. plains area (Laitu); hill area (Kongtu). *Status*: 6a (Vigorous). *Class*: Sino-Tibetan, Tibeto-Burman, Kuki-Chin, Peripheral, Southern, Cho-Asho, Asho. *Dialects*: Laitu, Kongtu, Khyang. *Type*: SOV; negation is marked after the verb. *Lg Use*: Used by all. Most also use Marma [rmz]. *Lg Dev*: Grammar. *Bible*: 2008. *Writing*: Latin script. Myanmar (Burmese) script, primary usage. *Other*: Non-indigenous. *Map*: 27. *Worldwide*: Total users in all countries: 174,000. Global EGIDS level: 5 (Developing). Indigenous in: Myanmar.

**Chin, Bawm** [bgr] (Bawm, Bawm hawlh, Bawn, Bawng, Bom). Autonym: Bawm hawlh. *Users*: 10,000 in Bangladesh (2011). *Location*: Chittagong division: Bandarbar and south Rangamati districts, near Myanmar border. *Status*: 5 (Developing). *Class*: Sino-Tibetan, Tibeto-Burman, Kuki-Chin, Central, Lai. *Type*: SOV. *Lg Use*: Used by all. Many also use Marma [rmz]. *Lg Dev*: Literature. Radio. Grammar. *Bible*: 1989–2018. *Writing*: Latin script. *Map*: 27. *Worldwide*: Total users in all countries: 15,140. Also indigenous in: India, Myanmar.

**Chin, Khumi** [cnk] (Khami, Khumi, Khumi Chin, Khuni, “Khweymi” *pej.*). Autonym: Khumi, Khumi Chin. *Users*: 4,000 in Bangladesh (2018). *Location*: Chittagong division: Bandarban district, Rowanchari, Ruma, and Thanchi subdistricts. *Status*: 6a (Vigorous). *Class*: Sino-Tibetan, Tibeto-Burman, Kuki-Chin, Peripheral, Southern. *Dialects*: Khimi, Yindi (Yindu), Khami. *Type*: SOV; genitives, articles, adjectives, numerals after noun heads; negation is marked after the verb. *Lg Use*: Used by all. Most also use Marma [rmz]. *Lg Dev*: Radio. *Bible*: 2015. *Writing*: Latin script. *Map*: 27. *Worldwide*: Total users in all countries: 64,000. Global EGIDS level: 5 (Developing). Also indigenous in: India, Myanmar.

**Chittagonian** [ctg] (Chatgaiyan Buli, Chatgaya, Chittagonian Bengali). *Users*: 13,000,000 (2006 SIL). *Location*: Chittagong division: widespread. *Status*: 3 (Wider communication). Used as a trade language under the Portuguese colonial administration in 1528. Widespread during the British period (1700–1947) with other speech communities migrating to Chittagong district and surrounding areas. Main domain is everyday communication. *Class*: Indo-European, Indo-Iranian, Indo-Aryan, Outer Languages, Eastern, Bengali-Assamese. *Dialects*: Not inherently intelligible with Bengali [ben], although considered a nonstandard Bengali dialect. Dialects form a continuum from north to south, with a larger religious distinction between Muslim and others. Rohingya [rhg] in Myanmar is reportedly similar to the southern dialect of Chittagonian. Lexical similarity: 43%–64% with Bangla [ben]. *Lg Use*: Home, family, religion. Many also use Bengali [ben], especially educated people who understand it but are not comfortable using it. Women in rural villages without access to television do not understand Bengali. Used as L2 by Bengali [ben], Chakma [ccp], Marma [rmz], Mru [mro], Rakhine [rki], Rohingya [rhg], Tippera [tpe]. *Lg Dev*: Lower literacy rate than most of the country. TV. Dictionary. Texts. *DLS*: Emerging (0.11). *Writing*: Arabic script, Naskh variant. Bengali (Bangla) script, primary usage. Latin script. *Other*: Muslim, Christian, Hindu. *Map*: 27.

**English** [eng]. Autonym: English. *Users*: 29,300,000 in Bangladesh (2020 Euromonitor International), L2 users. *Status*: 5\* (Dispersed). *Class*: Indo-European, Germanic, West, English. *Type*: SVO; prepositions; genitives after noun heads; articles, adjectives, numerals before noun heads; question word initial; word order distinguishes subject, object, indirect objects, given and new information, topic and comment; active and passive; causative; comparative; consonant and vowel clusters; 24 consonants, 13 vowels, 8 diphthongs; non-tonal; free stress; phrasal verbs. *Lg Use*: Used as L2 by Bihari [urd], Mahali [mjx], War-Jaintia [aml]. *Lg Dev*: Taught as subject in all secondary schools. Taught in most tertiary schools. Fully developed. Bible: 1382–2002. *Writing*: Braille script. Deseret Alphabet, developed in 1854 with limited usage until 1877. Duployan shorthand. Latin script, primary usage. Shavian (Shaw) script, no longer in use. *Other*: Non-indigenous. *Worldwide*: Total users in all countries: 1,456,448,320 (as L1: 379,682,200; as L2: 1,076,766,120). Global EGIDS level: 0 (International). Indigenous in: Ireland, United Kingdom. Also established in 167 other countries and unestablished in 16 more.

**Garó** [grt] (Garrow, Mande, Mandi). Autonym: Mande. *Users*: 120,000 in Bangladesh (2005). *Location*: Dhaka division: Dhaka, Jamalpur, Madhupur, Netrokona, Sherpur districts; enclaves north, southwest and northwest of Mymensingh city; Sylhet division: Sylhet and Sunamganj districts. *Status*: 5 (Dispersed). Used as LWC among all Mandi. *Class*: Sino-Tibetan, Tibeto-Burman, Sal, Boro-Garó. *Dialects*: Abeng, Achik, Brak, Chibok, Dual. *Type*: SOV; postpositions; case-marking (9 cases); numeral classifiers; tense markers; 16 consonant and 5 vowels; non-tonal. *Lg Use*: Used by all. Also use Bengali [ben]. Also use Hajong [haj]. Used as L2 by Atong [aot], Hajong [haj], Koch [kdq], Lyngngam [lyg], Megam [mef]. *Lg Dev*: Literacy rate in L1: 25%. Literacy rate in L2: 80% in Bengali [ben]. Parents want their children to read and write Garó. Literature. Radio. Videos. Dictionary. Grammar. Bible:

1924–1994. *Writing*: Bengali (Bangla) script. Braille script, used since 1998. Latin script. *Other*: Abeng dialect is spoken but writing is in Achik. Christian, Hindu, traditional religion. *Map*: 26. *Worldwide*: Total users in all countries: 1,270,000. Global EGIDS level: 2 (Provincial). Also indigenous in: India.

**Hajong** [haj] (Hajang). *Users*: 8,000 in Bangladesh. *Location*: Mymensingh division: Rangpur district east to Sunamganj district; Sylhet division. *Status*: 5 (Developing). *Class*: Indo-European, Indo-Iranian, Indo-Aryan, Outer Languages, Eastern, Bengali-Assamese. *Lg Use*: Home, village, religion. Used by all. Positive attitudes. Most also use Bengali [ben]. The young speak it better. Educated use standard Bengali. Nearly all can buy and sell in Bengali. An increasing number (young and educated) can use Bengali for abstract concepts. Also use Garo [grt]. Used as L2 by Garo [grt]. *Lg Dev*: Literacy rate in L2: 20%. Literature. Radio. TV. Bible portions: 2010–2011. *Writing*: Bengali (Bangla) script, used in Bangladesh and India. Latin script, used in India. *Other*: Hindu. *Map*: 26. *Worldwide*: Total users in all countries: 79,800. Also indigenous in: India.

**Khasi** [kha] (Cosyiah, Kahasi, Khasie, Khasiyas, Khassee, Khuchia, Kyi). Autonym: Khasi. *Users*: Very few speakers. *Location*: Sylhet division: Brahman Bazar enclave south of Sylhet town, Jaintiapur north border enclave; Barlekha area southwest to Kamalpur. *Status*: 6b\* (Threatened). *Class*: Austro-Asiatic, Mon-Khmer, Northern Mon-Khmer, Khasian. *Type*: SVO. *Lg Use*: Also use Bengali [ben]. Used as L2 by War-Jaintia [aml]. *Lg Dev*: Literature. Radio. TV. Dictionary. Grammar. Bible: 1891–2016. *Writing*: Bengali (Bangla) script, no longer in use. Latin script, used since about 1842. *Other*: The Lyngngam [lyg], Pnar [pbv], and War-Jaintia [aml] of Bangladesh identify ethnically with the Khasi. *Map*: 26. *Worldwide*: Total users in all countries: 1,050,000. Global EGIDS level: 2 (Provincial). Also indigenous in: India.

**Koch** [kdq] (Koc, Kocch, Koce, Kochboli, Konch). *Users*: 6,000 in Bangladesh (2006 SIL). *Location*: Dhaka division: north Sherpur district. *Status*: 6a (Vigorous). *Class*: Sino-Tibetan, Tibeto-Burman, Sal, Boro-Garo, Koch. *Dialects*: Tintekiya, Chapra, Margan. *Lg Use*: Home, community. Used by all. Positive attitudes. Also use Garo [grt]. *Lg Dev*: Literature. Dictionary. *Writing*: Bengali (Bangla) script. *Map*: 26. *Worldwide*: Total users in all countries: 42,400. Also indigenous in: India.

**Koda** [cdz]. *Users*: 1,300 in Bangladesh (2005). *Location*: Rajshahi division: Puthia, Mohonpur and Mundumala districts. *Status*: 6a (Vigorous). *Class*: Austro-Asiatic, Munda, North Munda, Kherwari, Mundari. *Lg Use*: May be in slow transition to colloquial Bengali [ben]. Education rate low. 60% say Bengali is their best language. Home, community. Used by all. Negative attitudes. Considered inferior to Bengali [ben] which is favored for education and economic advancement. Also use Bengali [ben]. Also use Santhali [sat], especially those who travel. *Lg Dev*: Literacy rate in L2: Below 10% in Bengali [ben]. *Writing*: Bengali (Bangla) script. *Other*: Hindu, traditional religion. *Map*: 25. *Worldwide*: Total users in all countries: 48,600. Also indigenous in: India.

**Kok Borok** [trp] (Debbarma, Tipura, Tripura, Tripuri). *Users*: 5,000 in Bangladesh. *Location*:

Chittagong division: Chandpur and Comilla areas east of Ganges delta; Sylhet division: 2 border areas southeast of Habiganj. *Status*: 6a (Vigorous). *Class*: Sino-Tibetan, Tibeto-Burman, Sal, Boro-Garo, Dimasa-Kokborok, Kok Borok. *Lg Use*: Used by all. *Lg Dev*: Literature. Newspapers. Radio. Dictionary. Grammar. Bible: 1998. *Writing*: Bengali (Bangla) script. Latin script. *Maps*: 26, 27. *Worldwide*: Total users in all countries: 958,000. Global EGIDS level: 4 (Educational). Also indigenous in: India.

**Kol** [ekl] (Hor). *Users*: 1,660 (2012 SIL). *Location*: Rajshahi district: Godagari subdistrict. *Status*: 6a (Vigorous). *Class*: Austro-Asiatic, Munda, North Munda, Kherwari, Mundari. *Dialects*: None known. Lexical similarity: 62%–64% with Santhali [sat], 58% with Mundari [unr], 57%–60% with Koda [cdz], 37% with Ho (Lanka Kol) [hoc]. *Lg Use*: Used by all. *DLS*: Still. *Writing*: Latin script. *Other*: Hindu, Christian, traditional religion. *Map*: 25.

**Kurux** [kru] (Kurukh, Oraon, Uraon). *Users*: 50,000 in Bangladesh (2011), decreasing. Ethnic population: 50,000 (2011). *Location*: Rangpur division: Dinajpur, Panchagarn, Rangpur, Saidpur and Thakurgaon districts' areas. *Status*: 6b (Threatened). *Class*: Dravidian, Northern. *Type*: SOV; postpositions; noun head final; 2 noun classes (human, non-human); content q-word initial; 1 prefix, up to 6 suffixes; clause constituents indicated by case-marking; verbal affixation marks person, number and genders of subject and object; ergativity; tense and aspect; passives and voice; nontonal; 29 consonant and 10 vowel phonemes. *Lg Use*: Not as vital as other indigenous languages. Some young people, all adults. Neutral attitudes. Most also use Rangpuri [rkt]. Also use Bengali [ben], which is used in most settings outside the home or village, with positive attitudes towards it. *Lg Dev*: Literature. Newspapers. Radio. Videos. Dictionary. Grammar. Texts. Bible: 2000. *Writing*: Devanagari script. *Other*: Different from Sadri, Oraon [sdr]. *Map*: 25. *Worldwide*: Total users in all countries: 2,084,390 (as L1: 2,083,700; as L2: 690). Global EGIDS level: 6a (Vigorous). Also indigenous in: India, Nepal. Also established in: Bhutan.

**Lyngngam** [lyg] (Megam). *Users*: 1,000 in Bangladesh. *Location*: Dhaka division: Netrokona district. *Status*: 7 (Shifting). *Class*: Austro-Asiatic, Mon-Khmer, Northern Mon-Khmer, Khasian. *Lg Use*: Most shifting to Bengali [ben]. Many shifting to Garo [grt]. *Other*: Previously listed as a dialect of Khasi. Culturally intermediate between the Khasi and the Garo. Resemble Garos in appearance and customs. (Singh 1994b) Lyngngam is a former Garo clan, but do not mix with the Garo, and consider themselves to be Khasi (Breton 1997). Megam [mef] and Lyngngam are sometimes used interchangeably for the same language in Netrokona district. Christian. *Map*: 26. *Worldwide*: Total users in all countries: 12,600. Global EGIDS level: 6b (Threatened). Also indigenous in: India.

**Mahali** [mjx] (Mahle). *Users*: 3,000 in Bangladesh (2010 SIL). Ethnic population: 3,000 (2004 SIL). *Location*: Rajshahi division: Abirpara, Matindor, and Mundumala-Pachondor villages; scattered. *Status*: 6a (Vigorous). *Class*: Austro-Asiatic, Munda, North Munda, Kherwari, Santali. *Lg Use*: Home, village. Used by all. All also use Bengali [ben]. Most also use Santhali [sat]. Some also use English [eng]. Some also use Sadri [sck]. *Lg Dev*: Literacy rate in L1: 37%. Literacy rate in L2: 50%. Multilingual education projects within the Mahali community

since 2006. *Writing*: Bengali (Bangla) script. Latin script, used in Bangladesh. *Other*: Non-indigenous. *Map*: 25. *Worldwide*: Total users in all countries: 29,400. Indigenous in: India.

**Marma** [rmz] (Arkanese-Marma, Mraima, “Mogh” *pej.*). *Users*: 150,000 in Bangladesh (2007). *Location*: Chittagong division: Bandarban, Khagrachari, and Rangamati districts. *Status*: 3 (Wider communication). Originating in Pegu of Burma (Myanmar), the Marma people migrated to Chittagong Hill Tracts in Bangladesh from the 14th–17th centuries. Marma became widespread during the European colonization (1757–1857). Used in ethno-medicinal practices, daily communication, trade, and religious ceremonies. *Class*: Sino-Tibetan, Tibeto-Burman, Ngwi-Burmese, Burmish, Southern. *Lg Use*: Home, village. Also use Chak [ckh], especially in Khagrachari and Rangamati districts. Also use Chittagonian [ctg]. Used as L2 by Asho Chin [csh], Bawm Chin [bgr], Chak [ckh], Khumi Chin [cnk], Mru [mro], Tippera [tpe]. *Lg Dev*: Taught in primary schools in grades 1 and 2. Bible portions: 1970. *DLS*: Emerging (0.09). *Writing*: Myanmar (Burmese) script, used in India. *Other*: Buddhist, Christian, Muslim. *Map*: 27. *Worldwide*: Total users in all countries: 186,700. Also indigenous in: India.

**Megam** [mef] (Migam, Negam). *Users*: 6,870 (2000). *Location*: Dhaka division: Netrokona district, Kalmakanda subdistrict. *Status*: 6a (Vigorous). *Class*: Sino-Tibetan, Tibeto-Burman, Sal, Boro-Garo. *Dialects*: Lexical similarity: 7%–9% with the Abeng dialect of Garo [grt], 60% with Lyngngam [lyg]. *Lg Use*: Home, village. Used by all. Positive attitudes. Also use Atong [aot]. Also use Garo [grt], particularly the Abeng dialect, with most other Garo speakers. *DLS*: Still. *Writing*: Unwritten. *Other*: Identify ethnically with the Garo [grt]. Christian. *Map*: 26.

**Meitei** [mni] (Manipuri, Meetei, Meitei Manipuri, Meithei). *Users*: 15,000 in Bangladesh (2003). 300 monolinguals. *Location*: Sylhet division: Moulvi Bazar district, Kamalganj subdistrict; Sylhet city. *Status*: 5 (Dispersed). *Class*: Sino-Tibetan, Tibeto-Burman. *Dialects*: Hindu Meitei, Pangan (Pangal). *Type*: SOV; postpositions; articles before noun heads; 25 consonants and 6 vowels; tonal (2 tones). *Lg Use*: Vigorous. Home, village. Used by all. Positive attitudes. Also use Bengali [ben], especially youth. Also use Bishnupuriya [bpy]. Also use Sylheti [syl]. Used as L2 by Bishnupuriya [bpy]. *Lg Dev*: Literacy rate in L1: Low. Literacy rate in L2: 70% in Bengali [ben]. Those literate in Bengali are able to read Meitei but have little practice doing so. Literature. Radio. Videos. Dictionary. Grammar. Bible: 1984–2019. *Writing*: Bengali (Bangla) script. Braille script. Meitei Mayek script. *Other*: Preferred name is Meitei Manipuri. Outsiders don’t distinguish between Meitei and Bishnupuriya, calling both of them Manipuri. Meitei is a well-developed language with much literature in India, but little is available in Bangladesh. Hindu, Muslim. *Map*: 26. *Worldwide*: Total users in all countries: 1,775,000. Global EGIDS level: 2 (Provincial). Also indigenous in: India.

**Mizo** [lus] (Hualngo, Lei, Lusai, Lushai, Lushei, Sailau, Whelngo). Autonym: Mizo. *Users*: 250 in Bangladesh (2007 census). *Location*: Chittagong division: Rangamati, Sajek. *Status*: 6b (Threatened). *Class*: Sino-Tibetan, Tibeto-Burman, Kuki-Chin, Central, Mizo. *Type*: SOV. *Lg Use*: Some young people, all adults. *Lg Dev*: Literature. Periodicals. Dictionary. Grammar. Bible: 1959–1995. *Writing*: Bengali (Bangla) script. Braille script. Latin script, primary usage.

*Other:* Most moved from Bangladesh to India. Christian. *Map:* 27. *Worldwide:* Total users in all countries: 843,750. Global EGIDS level: 4 (Educational). Also indigenous in: India, Myanmar (Mizo Chin).

**Mru** [mro] (Maru, Mro, Mrung, Murung). Autonym: Mru. *Users:* 30,000 in Bangladesh (2007). *Location:* Chittagong division: Bandarban district. *Status:* 5 (Developing). *Class:* Sino-Tibetan, Tibeto-Burman, Ngwi-Burmese, Mru. *Dialects:* Anok, Dowpreng, Sungma. Lexical similarity: 13% with Mro-Khimi Chin [cmr], 72%–76% with Anu-Khongso Chin [anl]; lexical similarity with Anok, Dowpreng, and Sungma dialects in Bangladesh is high: 91%–98%. *Type:* SOV. *Lg Use:* Used by all. Most also use Marma [rmz]. Also use Bengali [ben]. Also use Chittagonian [ctg]. *Lg Dev:* Literacy rate in L2: 10%. Literacy materials are being developed using the Krama script. Literature. NT: 1994. *DLS:* Emerging (0.04). *Writing:* Latin script. Mro script, developed in the 1980s. *Other:* Ethnically related to the Khumi. 5 linguistically distinct groups: Anok (largest and central) and Tshungma in the north, Domrong in the lowlands north of the Matamuri, Dopreng and Rumma in far south and into Arakan (Brauns and Loffler 1990). Traditional religion. *Map:* 27. *Worldwide:* Total users in all countries: 50,200. Also indigenous in: Myanmar. Also established in: India.

**Mundari** [unr] (Colh, Horo, Mandari, Mondari, Munari, Munda). *Users:* 2,500 in Bangladesh (2005 Caritas Bangladesh). Ethnic population: 5,000. *Location:* Rajshahi division: Naogaon district; Rangpur division: Dinajpur district; Sylhet division: possibly some tea estates. *Status:* 6b (Threatened). *Class:* Austro-Asiatic, Munda, North Munda, Kherwari, Mundari. *Dialects:* Hasada', Latar, Naguri, Kera'. *Lg Use:* Primarily in Rajshahi Division. Among the Mundaris living on Sylhet tea estates, Mundari language use is much lower. Home, village. Some of all ages. Positive attitudes. Most also use Rangpuri [rkt]. *Lg Dev:* Literature. Periodicals. Radio. Dictionary. Grammar. Texts. Bible: 1910–2002. *Writing:* Bengali (Bangla) script. Devanagari script, used in India. Latin script. Nag Mundari script. Oriya (Odia) script. *Other:* Non-indigenous. *Map:* 25. *Worldwide:* Total users in all countries: 1,170,280. Global EGIDS level: 5 (Developing). Indigenous in: India. Also established in: Nepal.

**Odia** [ory]. *Users:* 32,500 in Bangladesh (2000). *Status:* Unestablished. *Class:* Indo-European, Indo-Iranian, Indo-Aryan, Outer Languages, Eastern, Oriya. *Type:* SOV; postpositions; gender (masculine/feminine); no articles; case-marking (7 cases); verb affixes mark person, number; passives; tense and aspect; 22 consonant and 11 vowel phonemes. *Lg Dev:* Fully developed. Bible: 1815–2004. *Writing:* Braille script. Oriya (Odia) script, primary usage. *Other:* Non-indigenous. *Worldwide:* Total users in all countries: 39,763,607 (as L1: 34,463,280; as L2: 5,300,327). Global EGIDS level: 2 (Provincial). Indigenous in: India. Unestablished in: Australia, Canada, Myanmar, Nepal, United States.

**Pangkha** [pkh] (Pangkhu, Pankho, Pankhu, Panko). *Users:* 2,400 in Bangladesh (2015 Z. Akter). Ethnic population: 4,000 (2021 Joshua Project). *Location:* Chittagong division: Rangamati district. *Status:* 6b (Threatened). *Class:* Sino-Tibetan, Tibeto-Burman, Kuki-Chin, Central. *Lg Use:* Some young people, all adults. Also use Bengali [ben], as the medium of education. *DLS:* Emerging (0.01). *Writing:* Devanagari script. Latin script. *Other:* Christian.

*Map: 27. Worldwide:* Global EGIDS level: 6a (Vigorous). Also indigenous in: India (Pankhu).

**Pnar** [pbv]. *Users:* 4,000 in Bangladesh (2002). *Location:* Sylhet division: Sylhet district, Jaflong area, Jaintiapur, north of Raipur, and Tamabil; Moulvi Bazar district, Alinagar, Barlekha, Fenchuganj area, Fultala, Goalbari, Islampur, Kamalganj, Khajori, Madhabkunda, Rashidpur, and Satgoan. *Status:* 6b\* (Threatened). *Class:* Austro-Asiatic, Mon-Khmer, Northern Mon-Khmer, Khasian. *Lg Use:* Also use War-Jaintia [aml]. *Lg Dev:* Radio. *Writing:* Latin script. *Other:* Identify ethnically with the Khasi [kha]. *Map: 26. Worldwide:* Total users in all countries: 323,000. Global EGIDS level: 6a (Vigorous). Also indigenous in: India.

**Punjabi, Eastern** [pan]. *Users:* 23,700 in Bangladesh (2000). *Status:* Unestablished. *Class:* Indo-European, Indo-Iranian, Indo-Aryan, Intermediate Divisions, Western, Panjabi. *Type:* SOV; postpositions; gender (masculine/feminine); no articles; case-marking (7 cases); verb affixes mark person, number, gender of subject; passives; tense and aspect; 15 consonant and 24 vowel phonemes; tonal (3 tones: high, mid, low). *Lg Dev:* Literature. Radio. Grammar. Bible: 1959–2017. *Writing:* Arabic script, Naskh variant. Gurmukhi script, primary usage. Khojki script. *Other:* Non-indigenous. *Worldwide:* Total users in all countries: 52,077,070 (as L1: 48,299,070; as L2: 3,778,000). Global EGIDS level: 2 (Provincial). Indigenous in: India, Pakistan. Also established in: Fiji, Kenya, Mauritius, Singapore. Unestablished in: Australia, Canada, Iran, Japan, Malaysia, Nepal, New Zealand, Oman, Réunion, Saudi Arabia, Thailand, United Arab Emirates, United Kingdom, United States.

**Rakhine** [rki] (Rakhain, Rakkhaine, “Mogh” *pej*). *Users:* 200,000 in Bangladesh (2011 SIL). *Location:* Barisal division: Patuakhali district; Chittagong division: Cox’s Bazar, Maheshkhali island and south. *Status:* 5 (Dispersed). *Class:* Sino-Tibetan, Tibeto-Burman, Ngwi-Burmese, Burmish, Southern. *Dialects:* Rakhine, Sitwe. *Type:* SOV. *Lg Use:* Used by all. Positive attitudes. Many also use Bengali [ben], especially men. Also use Burmese [mya]. Also use Chittagonian [ctg]. *Lg Dev:* Literacy rate in L1: 80%. Literacy rate in L2: 60% in Rohingya [rhg], 30% in Marma [rmz]. Literature. Newspapers. Videos. *Writing:* Myanmar (Burmese) script, informal and non-standardized use. *Other:* Buddhist, Hindu, Muslim. *Maps: 24, 27. Worldwide:* Total users in all countries: 2,020,000 (as L1: 1,000,000; as L2: 1,020,000). Global EGIDS level: 3 (Wider communication). Also indigenous in: Myanmar.

**Rangpuri** [rkt] (Anchalit Bangla, Bahe, Bahe Bangla, Deshi Bhasa, Dhekia, Dhekri, Polia). *Users:* 10,325,000 in Bangladesh, all users. L1 users: 10,000,000 in Bangladesh (2007 SIL). L2 users: 325,000 (2015 SIL). *Location:* Rajshahi division: Joypurhat area; Rangpur division: Dinajpur, Gaibanda, Lalmonihat, Nilphamari, Panchagar, Rangpur, and Thakurgaon districts. *Status:* 5 (Developing). Used in the market and for commerce, media, and travel by nearly all minority language speakers in the greater Rangpur-Dinajpur area. Rangpuri has reportedly been spoken in the area for centuries. *Class:* Indo-European, Indo-Iranian, Indo-Aryan, Outer Languages, Eastern, Bengali-Assamese. *Lg Use:* Used by all. Positive attitudes. Used as L2 by Kurux [kru], Mundari [unr], Oraon Sadri [sdr], Santhali [sat], Sauria Paharia [mjt]. *Lg Dev:* Literature. Radio. Dictionary. Grammar. Bible portions: 2008–2011. *DLS:* Emerging (0.05). *Writing:* Bengali (Bangla) script. *Map: 25. Worldwide:* Total users in all countries: 10,801,000

(as L1: 10,476,000; as L2: 325,000). Also indigenous in: India (Kamtapuri).

**Riang** [ria] (Kau Bru, Reang). Autonym: Kau Bru. *Users*: 500 in Bangladesh (2007). *Location*: Chittagong division: Rangamati district. *Status*: 7 (Shifting). *Class*: Sino-Tibetan, Tibeto-Burman, Sal, Boro-Garo, Dimasa-Kokborok, Kok Borok. *Lg Use*: Shifting to Chakma [ccp]. *Lg Dev*: Periodicals. Videos. Bible: 2008. *Writing*: Latin script. *Other*: Different from Riang Lang [ril] of Myanmar, a Mon-Khmer language. *Map*: 27. *Worldwide*: Total users in all countries: 59,000. Global EGIDS level: 5 (Developing). Also indigenous in: India.

**Rohingya** [rhg] (Rohinga, Ruwaingya). Autonym: Ruwaingya. *Users*: 947,000 in Bangladesh (2017 The Arakan Project). *Location*: Chittagong division: Cox's Bazaar district. *Status*: 6b\* (Threatened). *Class*: Indo-European, Indo-Iranian, Indo-Aryan, Outer Languages, Eastern, Bengali-Assamese. *Lg Use*: Also use Chittagonian [ctg]. *Writing*: Arabic script, Naskh variant. Hanifi Rohingya script, some development in immigrant communities for all three scripts. Latin script. *Other*: Muslim. *Map*: 27. *Worldwide*: Total users in all countries: 2,529,270. Global EGIDS level: 6a (Vigorous). Also indigenous in: Myanmar. Unestablished in: Australia, China, India, Indonesia, Malaysia, Pakistan, Saudi Arabia, Thailand, United Arab Emirates.

**Sadri, Oraon** [sdr] (Pahan). *Users*: 166,000 (2000). *Location*: Khulna division: Jhenaidah, Kushtia, and Magura districts; Rajshahi division: widespread; Rangpur division: Hilli area; Sylhet division: possibly Habiganj and Moulvibazar districts. *Status*: 6b (Threatened). *Class*: Indo-European, Indo-Iranian, Indo-Aryan, Outer Languages, Eastern, Bihari. *Dialects*: Borail Sadri, Nurpur Sadri, Uchai Sadri, Mokkan Tila Sadri. Dialects may need separate literature. Inherent intelligibility of 7 Sadri varieties on Borail ranges from 70%–93%; of 8 varieties on Nurpur from 78%–94%. Lexical similarity: 88%–97% with 14 Sadri varieties with the Borail Sadri dialect. *Lg Use*: Some young people, all adults. Most also use Bengali [ben], quite fluently. Some also use Rangpuri [rkt], in Rangpur division. *Lg Dev*: Literacy rate in L2: 30%. Literature. NT: 2003. Agency: Bangladesh Oraon Foundation. *DLS*: Emerging (0.01). *Writing*: Bengali (Bangla) script. Latin script. *Other*: The Oraon people came from India over 100 years ago. Sometime in the past some Oraon exchanged Kurux [kru], a Dravidian language, for Sadri, which is Indo-Aryan. Some Oraon people still speak Kurux. Traditional religion, Hindu. *Map*: 25.

**Santhali** [sat] (Har, Har Rar, Hor, Sandal, Sangtal, Santal, Santali, Satar, Sonthal). Autonym: Har Rar. *Users*: 225,000 in Bangladesh (2011). *Location*: Rajshahi and Rangpur divisions: widespread. *Status*: 5 (Dispersed). *Class*: Austro-Asiatic, Munda, North Munda, Kherwari, Santali. *Type*: SOV; postpositions; noun head final; no noun classes or genders; content q-word in situ; 1 prefix, up to 3 suffixes; clause constituents indicated by case-marking; verbal affixation marks person and number; non-ergative; both tense and aspect; passives and voice; nontonal; 33 consonant and 6 vowel phonemes. *Lg Use*: Home, village, church, market. Used by all. Positive attitudes. Many also use Rangpuri [rkt]. Used as L2 by Koda [cdz], Mahali [mjx]. *Lg Dev*: Literacy rate in L1: 50%. Literature. Periodicals. Radio. Videos. Dictionary. Grammar. Texts. Bible: 1914–2005. *Writing*: Bengali (Bangla) script. Devanagari script, used

in Nepal. Latin script, used in Bangladesh. Ol Chiki (Ol Cemet', Ol, Santali) script. Oriya (Odia) script. *Map: 25. Worldwide:* Total users in all countries: 7,621,180 (as L1: 7,620,200; as L2: 980). Global EGIDS level: 4 (Educational). Also indigenous in: India, Nepal. Unestablished in: Bhutan.

**Sauria Paharia** [mjt] (Malto, Paharia). *Users:* 7,000 in Bangladesh (2007). *Location:* Rajshahi division: northwest of city, also near Singra; Rangpur division: south of Rangpur city. *Status:* 7 (Shifting). *Class:* Dravidian, Northern. *Lg Use:* Shifting to Rangpuri [rkt]. *Lg Dev:* Newspapers. Periodicals. Radio. NT: 1999. *Writing:* Bengali (Bangla) script. Devanagari script. *Map: 25. Worldwide:* Total users in all countries: 242,000. Global EGIDS level: 5 (Developing). Also indigenous in: India.

**Sylheti** [syl] (Siloti, Srihattia, Sylhetti, Sylhetti Bangla, Syloti, Syloty). *Users:* 8,020,000 in Bangladesh, all users. L1 users: 6,520,000 in Bangladesh (2017). L2 users: 1,500,000. *Location:* Sylhet division: Habiganj, Moulvibazar, Sunamganj, and Sylhet districts. *Status:* 3 (Wider communication). Became widespread in the 16th century alongside standard Bengali [ben]. Used in literature, religious poetry, home life, and online written communication. *Class:* Indo-European, Indo-Iranian, Indo-Aryan, Outer Languages, Eastern, Bengali-Assamese. *Dialects:* None known. Reportedly similar to Assamese [asm]. Lexical similarity: 70% with Bengali [ben]. *Lg Use:* Used by all. Also use Bengali [ben], primarily men. Bengali used in education and media. Used as L2 by Meitei [mni], War-Jaintia [aml]. *Lg Dev:* Literacy rate in L2: 35%. Educated can read Bengali [ben]. Few women are educated. NT: 2014. *DLS:* Ascending (0.29). *Writing:* Bengali (Bangla) script. Latin script. Syloti Nagri script. *Other:* Muslim, Hindu. *Map: 26. Worldwide:* Total users in all countries: 11,520,000 (as L1: 10,020,000; as L2: 1,500,000). Also indigenous in: India. Unestablished in: Malaysia, United Kingdom.

**Tangchangya** [tnv] (Tanchangya). *Users:* 21,600 (1991 census). *Location:* Chittagong hills. *Status:* 6a (Vigorous). *Class:* Indo-European, Indo-Iranian, Indo-Aryan, Outer Languages, Eastern, Bengali-Assamese. *Dialects:* None known. 90% intelligibility of Chakma [ccp]. Lexical similarity: 58%–67% with Chakma [ccp]. *Lg Use:* Used by all. Also use Chak [ckh], in Khagrachari and Rangamati districts. *DLS:* Still. *Writing:* Chakma script. *Map: 27.*

**Tippera** [tpe] (Hill Tippera, Kok Borok, Tipperah, Tippurah, Tipra, Tipura, Triperah, Tripura). *Users:* 85,000. *Location:* Chittagong division: Chittagong district, Fatikchari subdistrict; Khagrachari district. *Status:* 4 (Educational). *Class:* Sino-Tibetan, Tibeto-Burman, Sal, Boro-Garo. *Dialects:* Naitong, Dendak, Gabing, Khali, Phatung, Tongpai, Anok, Kewa, Kema, Aslong. Lexical similarity: 56%–85% among dialects, 61%–74% with Kok Borok [trp], 53%–65% with Riang [ria], 37%–59% with Usoi Tripura [usi]. *Lg Use:* Used by all. Many also use Bengali [ben], especially men. Many also use Marma [rmz]. Also use Chak [ckh], in Khagrachari and Rangamati districts. Also use Chittagonian [ctg]. *Lg Dev:* Taught in primary schools in grades 1 and 2. *DLS:* Still. *Writing:* Bengali (Bangla) script. Latin script. *Other:* Traditional religion, Hindu. *Map: 27.*

**Usoi** [usi] (Kau Brung, Unshoi, Unsuiy, Ushoi, Usui). Autonym: Kaobrung. *Users:* 22,400.

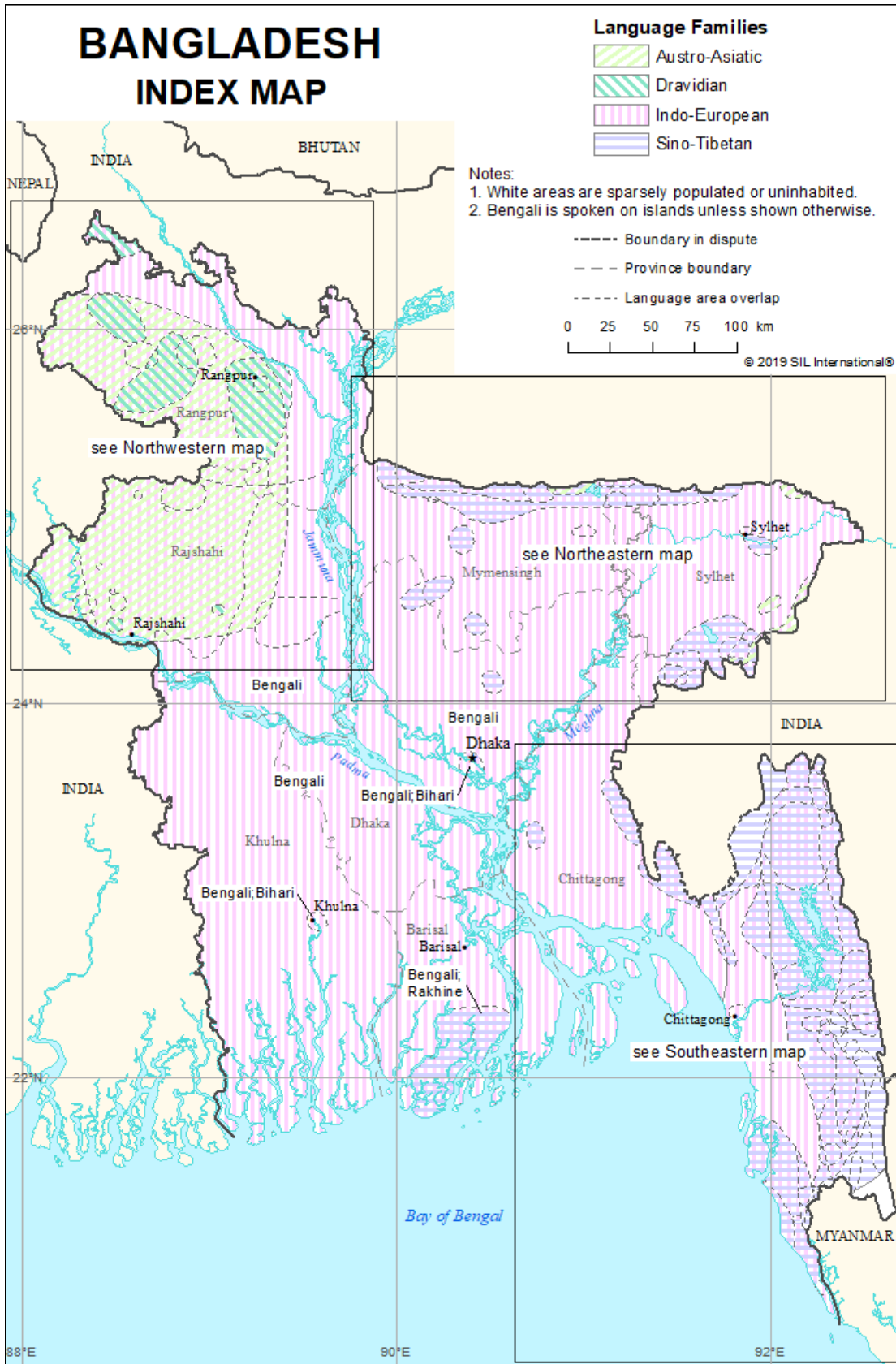
*Location:* Chittagong division: Bandarban district. *Status:* 5 (Developing). *Class:* Sino-Tibetan, Tibeto-Burman, Sal, Boro-Garo, Dimasa-Kokborok, Kok Borok. *Dialects:* Panji, Joloi. Lexical similarity: 88% with Panji and Joloi dialects, 59%–67% with Riang [ria], 47%–58% with Kok Borok [trp], 37%–59% with Tippera [tpe]. *Lg Use:* Used by all. *Lg Dev:* Literature. NT: 1995. *DLS:* Still. *Writing:* Bengali (Bangla) script. Latin script. *Other:* Hindu, Christian, traditional religion. *Map:* 27.

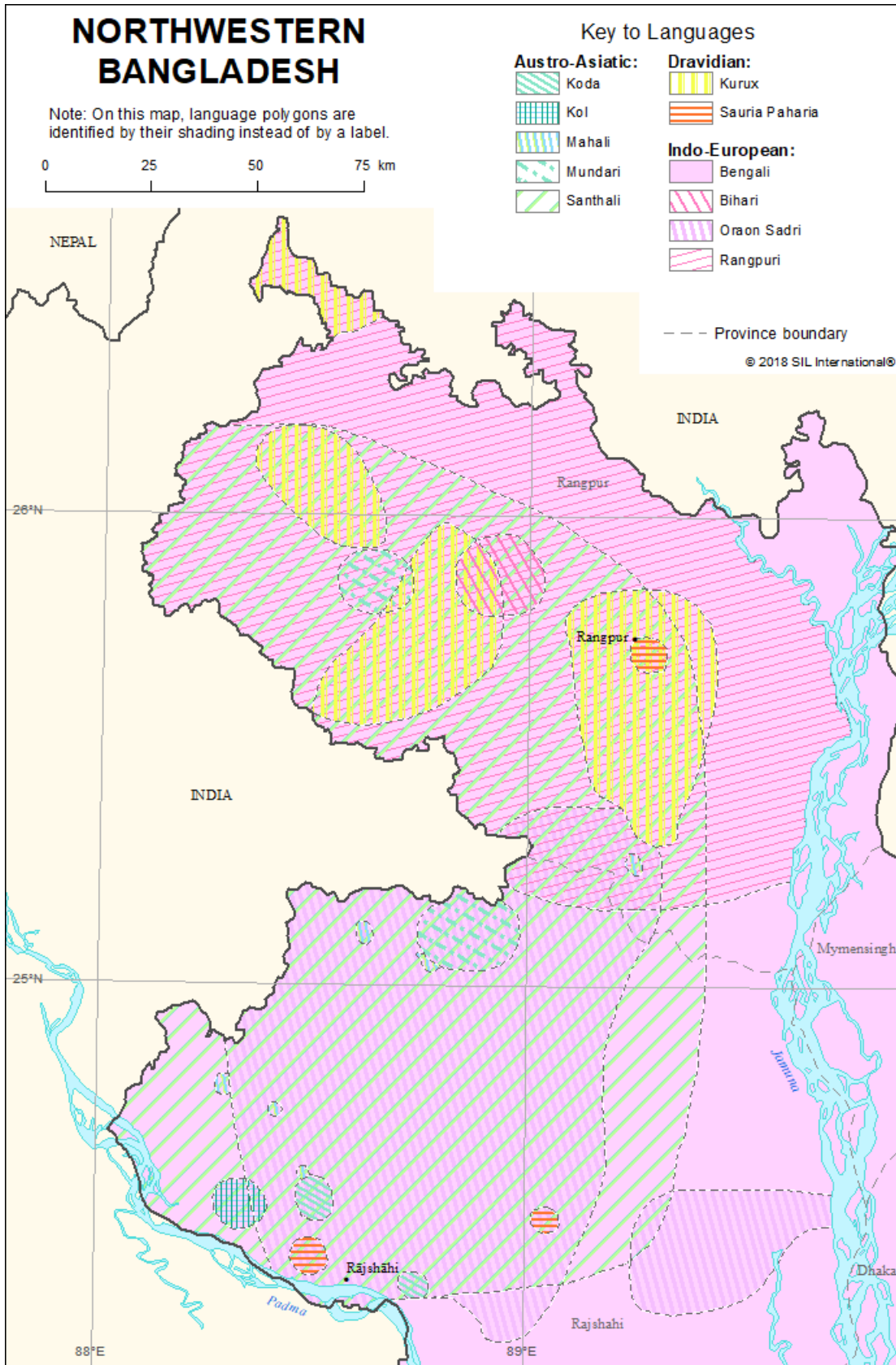
**War-Jaintia** [aml] (War-Khasi). *Users:* 16,000 in Bangladesh (2003 SIL). 4,000 monolinguals.

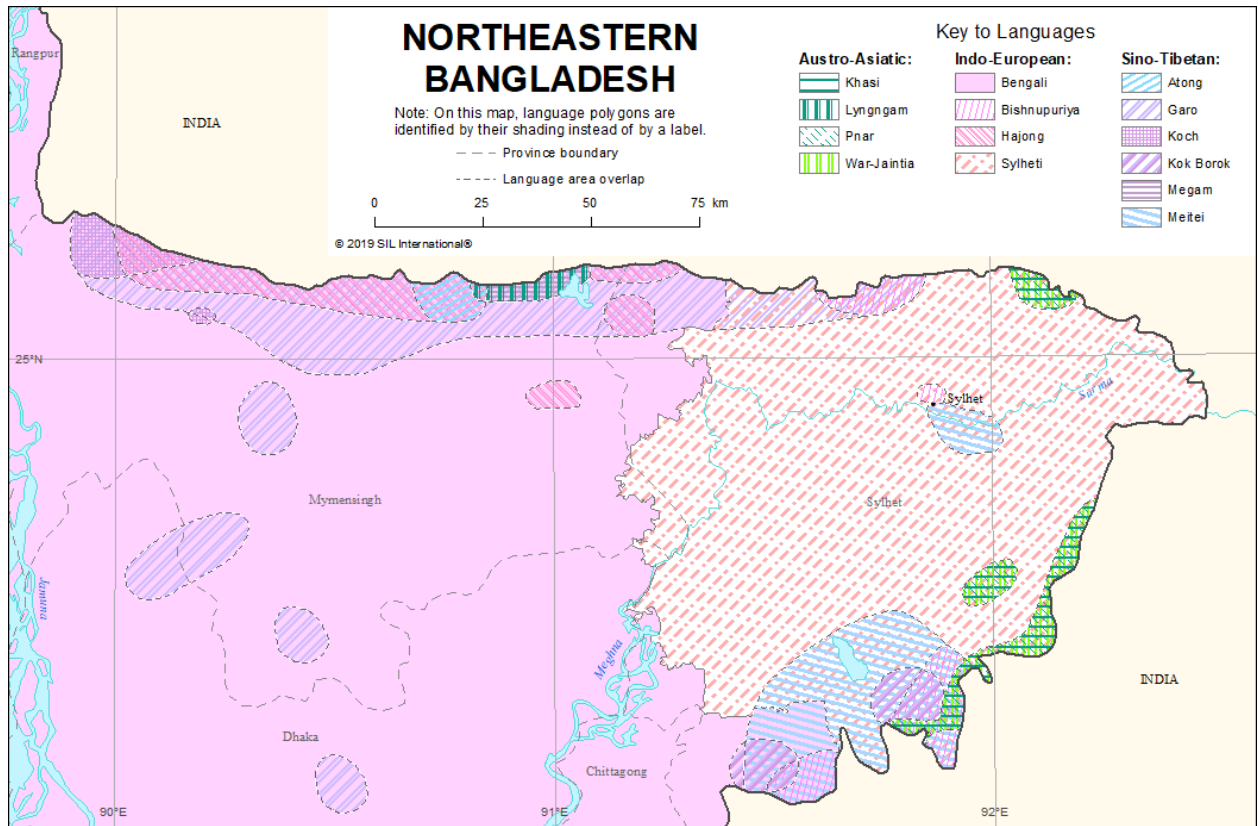
*Location:* Sylhet division: Moulvi Bazar district, Alinagar, Barlekha, Fenchuganj area, Fultala, Goalbari, Islampur, Kamalganj, Khajori, Madhabkunda, Rashidpur, and Satgoan; Sylhet district, Jaflong area, Jaintiapur, north of Raipur, and Tamabil. *Status:* 6a (Vigorous). *Class:* Austro-Asiatic, Mon-Khmer, Northern Mon-Khmer, Khasian. *Dialects:* War-Jaintia, War-Khasi. Lexical similarity: 86%–92% with dialects in Bangladesh; 83%–89% with War-Jaintia in India and Bangladesh; India variety 41%–45% with Pnar [pbv] (from scant data); 27%–35% with standard Khasi [kha]; 24%–28% with War dialect of Khasi. *Type:* SVO; prepositions; articles before noun heads; CV, CVC, CVV, V, VCV, CCV, CCVC; nontonal. *Lg Use:* Vigorous. Home, village. Used by all. Also use Bengali [ben]. Also use English [eng]. Also use Khasi [kha]. Also use Sylheti [syl]. Used as L2 by Bengali [ben], Pnar [pbv]. *Lg Dev:* Literacy rate in L2: 40% in Bengali [ben]; many are literate in standard Khasi [kha]. Using Latin script for War-Jaintia produces some pronunciation problems but eases transition into Khasi. *Grammar.* *DLS:* Still. *Writing:* Unwritten. *Other:* Learning standard Khasi [kha] is important due to affinity with the larger Khasi ethnic group. Standard Khasi has high prestige. Christian, traditional religion. *Map:* 26. *Worldwide:* Total users in all countries: 67,600. Also indigenous in: India.

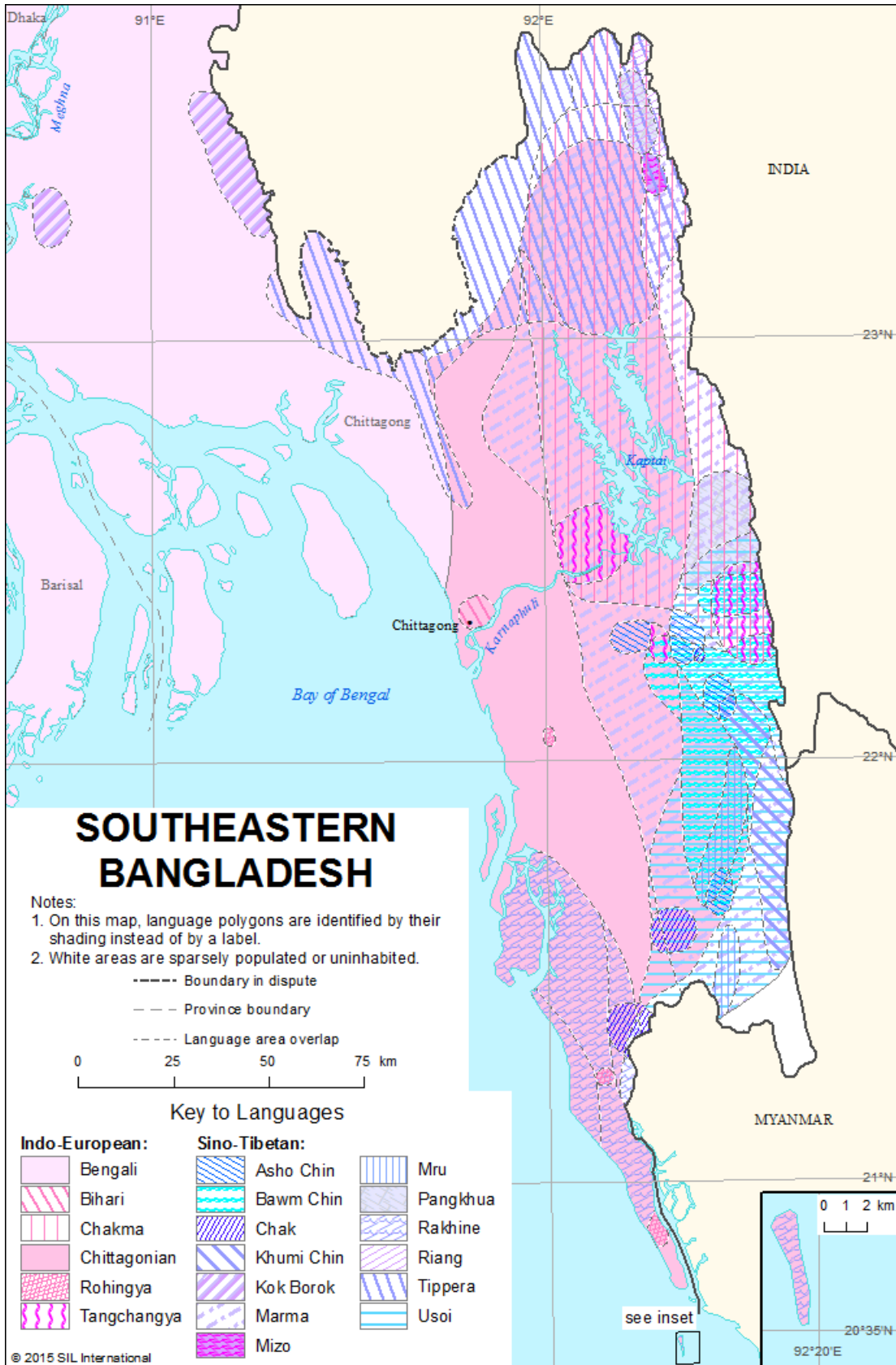
## **Language Maps**

Bangladesh: Index map	24
Northwestern Bangladesh	25
Northeastern Bangladesh	26
Southeastern Bangladesh	27









## Languages by Population

In this section the languages of Bangladesh are listed in order of their population of first-language speakers within the country, from highest to lowest. The entries report just the population and status elements.

### 100,000,000 to 999,999,999

**Bengali** [[ben](#)] *Users:* 130,000,000 in Bangladesh (2017). 159,000,000 in Bangladesh, all users. L2 users: 29,000,000 (2017). *Status:* 1 (National). Statutory national language (1972, Constitution, Article 3), has been reinforced by the Bengali Language Introduction Act of 1987 to fully enact Article 3 of the Constitution, making the use of Bengali compulsory at all levels of state activities except in foreign affairs. *Worldwide:* Total users in all countries: 272,828,760 (as L1: 233,808,880; as L2: 39,019,880).

### 10,000,000 to 99,999,999

**Chittagonian** [[ctg](#)] *Users:* 13,000,000 (2006 SIL). *Status:* 3 (Wider communication).

**Rangpuri** [[rkt](#)] *Users:* 10,000,000 in Bangladesh (2007 SIL). 10,325,000 in Bangladesh, all users. L2 users: 325,000 (2015 SIL). *Status:* 5 (Developing). *Worldwide:* Total users in all countries: 10,801,000 (as L1: 10,476,000; as L2: 325,000).

### 1,000,000 to 9,999,999

**Sylheti** [[syl](#)] *Users:* 6,520,000 in Bangladesh (2017). 8,020,000 in Bangladesh, all users. L2 users: 1,500,000. *Status:* 3 (Wider communication). *Worldwide:* Total users in all countries: 11,520,000 (as L1: 10,020,000; as L2: 1,500,000).

### 100,000 to 999,999

**Rohingya** [[rhg](#)] *Users:* 947,000 in Bangladesh (2017 The Arakan Project). *Status:* 6b\* (Threatened). *Worldwide:* Total users in all countries: 2,529,270.

**Bangla Sign Language** [[ins](#)] *Users:* 815,000 in Bangladesh (2021 DBS/DOOR/SIL). Estimated 500,000–1,000,000, assuming 0.3%–0.6% of the total population. Another estimate: 2,600,000 (2014 Disabled Peoples' International Pacific-Asia Region). *Status:* 6a\* (Vigorous). *Worldwide:* Total users in all countries: 6,815,000.

**Bihari** [[urd](#)] *Users:* 250,000 in Bangladesh (2009 UNHR). *Status:* 5 (Dispersed). *Worldwide:* Total users in all countries: 231,717,940 (as L1: 70,555,140; as L2: 161,162,800).

**Santhali** [[sat](#)] *Users:* 225,000 in Bangladesh (2011). *Status:* 5 (Dispersed). *Worldwide:* Total users in all countries: 7,621,180 (as L1: 7,620,200; as L2: 980).

**Rakhine** [[rki](#)] *Users:* 200,000 in Bangladesh (2011 SIL). *Status:* 5 (Dispersed). *Worldwide:* Total users in all countries: 2,020,000 (as L1: 1,000,000; as L2: 1,020,000).

**Sadri, Oraon** [[sdr](#)] *Users:* 166,000 (2000). *Status:* 6b (Threatened).

**Chakma** [[ccp](#)] *Users:* 150,000 in Bangladesh (2007 SIL). *Status:* 4 (Educational). *Worldwide:* Total users in all countries: 378,000.

**Marma** [[rmz](#)] *Users:* 150,000 in Bangladesh (2007). *Status:* 3 (Wider communication). *Worldwide:* Total users in all countries: 186,700.

**Garó** [[grt](#)] *Users:* 120,000 in Bangladesh (2005). *Status:* 5 (Dispersed). *Worldwide:* Total users in all countries: 1,270,000.

## 10,000 to 99,999

**Tippera** [[tpe](#)] *Users:* 85,000. *Status:* 4 (Educational).

**Kurux** [[kru](#)] *Users:* 50,000 in Bangladesh (2011), decreasing. Ethnic population: 50,000 (2011). *Status:* 6b (Threatened). *Worldwide:* Total users in all countries: 2,084,390 (as L1: 2,083,700; as L2: 690).

**Bishnupuriya** [[bpy](#)] *Users:* 40,000 in Bangladesh (2003). 400 monolinguals. *Status:* 6a (Vigorous). *Worldwide:* Total users in all countries: 119,600.

**Odia** [[ory](#)] *Users:* 32,500 in Bangladesh (2000). *Status:* Unestablished. *Worldwide:* Total users in all countries: 39,763,607 (as L1: 34,463,280; as L2: 5,300,327).

**Mru** [[mro](#)] *Users:* 30,000 in Bangladesh (2007). *Status:* 5 (Developing). *Worldwide:* Total users in all countries: 50,200.

**Punjabi, Eastern** [[pan](#)] *Users:* 23,700 in Bangladesh (2000). *Status:* Unestablished. *Worldwide:* Total users in all countries: 52,077,070 (as L1: 48,299,070; as L2: 3,778,000).

**Usoi** [[usi](#)] *Users:* 22,400. *Status:* 5 (Developing).

**Tangchangya** [[tnv](#)] *Users:* 21,600 (1991 census). *Status:* 6a (Vigorous).

**War-Jaintia** [[aml](#)] *Users:* 16,000 in Bangladesh (2003 SIL). 4,000 monolinguals. *Status:* 6a (Vigorous). *Worldwide:* Total users in all countries: 67,600.

**Meitei** [[mni](#)] *Users:* 15,000 in Bangladesh (2003). 300 monolinguals. *Status:* 5 (Dispersed). *Worldwide:* Total users in all countries: 1,775,000.

**Chin, Bawm** [[bgr](#)] *Users:* 10,000 in Bangladesh (2011). *Status:* 5 (Developing). *Worldwide:* Total users in all countries: 15,140.

## 1,000 to 9,999

**Hajong** [[haj](#)] *Users:* 8,000 in Bangladesh. *Status:* 5 (Developing). *Worldwide:* Total users in all countries: 79,800.

**Sauria Paharia** [mjt] *Users:* 7,000 in Bangladesh (2007). *Status:* 7 (Shifting). *Worldwide:* Total users in all countries: 242,000.

**Megam** [mef] *Users:* 6,870 (2000). *Status:* 6a (Vigorous).

**Koch** [kdq] *Users:* 6,000 in Bangladesh (2006 SIL). *Status:* 6a (Vigorous). *Worldwide:* Total users in all countries: 42,400.

**Atong** [aot] *Users:* 5,400 in Bangladesh. *Status:* 6b (Threatened). *Worldwide:* Total users in all countries: 10,000.

**Kok Borok** [trp] *Users:* 5,000 in Bangladesh. *Status:* 6a (Vigorous). *Worldwide:* Total users in all countries: 958,000.

**Chin, Asho** [csh] *Users:* 4,000 in Bangladesh (2011). *Status:* 6a (Vigorous). *Worldwide:* Total users in all countries: 174,000.

**Chin, Khumi** [cnk] *Users:* 4,000 in Bangladesh (2018). *Status:* 6a (Vigorous). *Worldwide:* Total users in all countries: 64,000.

**Pnar** [pbv] *Users:* 4,000 in Bangladesh (2002). *Status:* 6b\* (Threatened). *Worldwide:* Total users in all countries: 323,000.

**Chak** [ckh] *Users:* 3,000 in Bangladesh (Bradley 2007b). *Status:* 6a (Vigorous). *Worldwide:* Total users in all countries: 4,000.

**Mahali** [mjx] *Users:* 3,000 in Bangladesh (2010 SIL). Ethnic population: 3,000 (2004 SIL). *Status:* 6a (Vigorous). *Worldwide:* Total users in all countries: 29,400.

**Mundari** [unr] *Users:* 2,500 in Bangladesh (2005 Caritas Bangladesh). Ethnic population: 5,000. *Status:* 6b (Threatened). *Worldwide:* Total users in all countries: 1,170,280.

**Pangkua** [pkh] *Users:* 2,400 in Bangladesh (2015 Z. Akter). Ethnic population: 4,000 (2021 Joshua Project). *Status:* 6b (Threatened).

**Kol** [ekl] *Users:* 1,660 (2012 SIL). *Status:* 6a (Vigorous).

**Koda** [cdz] *Users:* 1,300 in Bangladesh (2005). *Status:* 6a (Vigorous). *Worldwide:* Total users in all countries: 48,600.

**Lyngngam** [lyg] *Users:* 1,000 in Bangladesh. *Status:* 7 (Shifting). *Worldwide:* Total users in all countries: 12,600.

## 100 to 999

**Riang** [ria] *Users:* 500 in Bangladesh (2007). *Status:* 7 (Shifting). *Worldwide:* Total users in all countries: 59,000.

**Mizo** [lus] *Users:* 250 in Bangladesh (2007 census). *Status:* 6b (Threatened). *Worldwide:* Total users in all countries: 843,750.

## Unknown

**Khasi** [[kha](#)] *Users:* Very few speakers. *Status:* 6b\* (Threatened). *Worldwide:* Total users in all countries: 1,050,000.

**English** [[eng](#)] *Users:* L2 users: 29,300,000 in Bangladesh (2020 Euromonitor International), L2 users. *Status:* 5\* (Dispersed). *Worldwide:* Total users in all countries: 1,456,448,320 (as L1: 379,682,200; as L2: 1076,766,120).

## Languages by Status

In this section the languages of Bangladesh are listed in order of their status within the country as represented by their level on the EGIDs scale (Lewis and Simons 2010). The language entries are reduced to just the information elements that are relevant to assessing the EGIDS level: population, status, language use, language development, and writing.

### 1 (National)

**Bengali** [ben] *Users:* 159,000,000 in Bangladesh, all users. L1 users: 130,000,000 in Bangladesh (2017). L2 users: 29,000,000 (2017). *Status:* Statutory national language (1972, Constitution, Article 3), has been reinforced by the Bengali Language Introduction Act of 1987 to fully enact Article 3 of the Constitution, making the use of Bengali compulsory at all levels of state activities except in foreign affairs. *Lg Use:* Used by all. A few also use War-Jaintia [aml]. Also use Chittagonian [ctg]. *Lg Dev:* Fully developed. Bible: 1832–2016. *Writing:* Bengali (Bangla) script, primary usage. Braille script. Newa script, no longer in use. *Worldwide:* Total users in all countries: 272,828,760 (as L1: 233,808,880; as L2: 39,019,880).

### 3 (Wider communication)

**Chittagonian** [ctg] *Users:* 13,000,000 (2006 SIL). *Status:* Used as a trade language under the Portuguese colonial administration in 1528. Widespread during the British period (1700–1947) with other speech communities migrating to Chittagong district and surrounding areas. Main domain is everyday communication. *Lg Use:* Home, family, religion. Many also use Bengali [ben], especially educated people who understand it but are not comfortable using it. Women in rural villages without access to television do not understand Bengali. Used as L2 by Bengali [ben], Chakma [ccp], Marma [rmz], Mru [mro], Rakhine [rki], Rohingya [rhg], Tippera [tpe]. *Lg Dev:* TV. Dictionary. Texts. *Writing:* Arabic script, Naskh variant. Bengali (Bangla) script, primary usage. Latin script.

**Marma** [rmz] *Users:* 150,000 in Bangladesh (2007). *Status:* Originating in Pegu of Burma (Myanmar), the Marma people migrated to Chittagong Hill Tracts in Bangladesh from the 14th–17th centuries. Marma became widespread during the European colonization (1757–1857). Used in ethno-medicinal practices, daily communication, trade, and religious ceremonies. *Lg Use:* Home, village. Also use Chak [ckh], especially in Khagrachari and Rangamati districts. Also use Chittagonian [ctg]. Used as L2 by Asho Chin [csh], Bawm Chin [bgr], Chak [ckh], Khumi Chin [cnk], Mru [mro], Tippera [tpe]. *Lg Dev:* Bible portions: 1970. *Writing:* Myanmar (Burmese) script, used in India. *Worldwide:* Total users in all countries: 186,700.

**Sylheti** [syl] *Users:* 8,020,000 in Bangladesh, all users. L1 users: 6,520,000 in Bangladesh (2017). L2 users: 1,500,000. *Status:* Became widespread in the 16th century alongside standard Bengali [ben]. Used in literature, religious poetry, home life, and online written

communication. *Lg Use*: Used by all. Also use Bengali [ben], primarily men. Bengali used in education and media. Used as L2 by Meitei [mni], War-Jaintia [aml]. *Lg Dev*: NT: 2014. *Writing*: Bengali (Bangla) script. Latin script. Syloti Nagri script. *Worldwide*: Total users in all countries: 11,520,000 (as L1: 10,020,000; as L2: 1,500,000).

## 4 (Educational)

**Chakma** [ccp] *Users*: 150,000 in Bangladesh (2007 SIL). *Lg Use*: All domains. Used by all. Positive attitudes. Also use Bengali [ben], especially educated people and most men. Also use Chittagonian [ctg]. Used as L2 by Riag [ria]. *Lg Dev*: Literature. Bible: 2021. *Writing*: Bengali (Bangla) script. Chakma script. Latin script. *Worldwide*: Total users in all countries: 378,000.

**Tippera** [tpe] *Users*: 85,000. *Lg Use*: Used by all. Many also use Bengali [ben], especially men. Many also use Marma [rmz]. Also use Chak [ckh], in Khagrachari and Rangamati districts. Also use Chittagonian [ctg]. *Writing*: Bengali (Bangla) script. Latin script.

## 5 (Developing)

**Chin, Bawm** [bgr] *Users*: 10,000 in Bangladesh (2011). *Lg Use*: Used by all. Many also use Marma [rmz]. *Writing*: Latin script. *Worldwide*: Total users in all countries: 15,140.

**Hajong** [haj] *Users*: 8,000 in Bangladesh. *Lg Use*: Home, village, religion. Used by all. Positive attitudes. Most also use Bengali [ben]. The young speak it better. Educated use standard Bengali. Nearly all can buy and sell in Bengali. An increasing number (young and educated) can use Bengali for abstract concepts. Also use Garo [grt]. Used as L2 by Garo [grt]. *Writing*: Bengali (Bangla) script, used in Bangladesh and India. Latin script, used in India. *Worldwide*: Total users in all countries: 79,800.

**Mru** [mro] *Users*: 30,000 in Bangladesh (2007). *Lg Use*: Used by all. Most also use Marma [rmz]. Also use Bengali [ben]. Also use Chittagonian [ctg]. *Lg Dev*: Literature. NT: 1994. *Writing*: Latin script. Mro script, developed in the 1980s. *Worldwide*: Total users in all countries: 50,200.

**Rangpuri** [rkt] *Users*: 10,325,000 in Bangladesh, all users. L1 users: 10,000,000 in Bangladesh (2007 SIL). L2 users: 325,000 (2015 SIL). *Status*: Used in the market and for commerce, media, and travel by nearly all minority language speakers in the greater Rangpur-Dinajpur area. Rangpuri has reportedly been spoken in the area for centuries. *Lg Use*: Used by all. Positive attitudes. Used as L2 by Kurux [kru], Mundari [unr], Oraon Sadri [sdr], Santhali [sat], Sauria Paharia [mjt]. *Lg Dev*: Literature. Radio. Dictionary. Grammar. Bible portions: 2008–2011. *Writing*: Bengali (Bangla) script. *Worldwide*: Total users in all countries: 10,801,000 (as L1: 10,476,000; as L2: 325,000).

**Usoi** [usi] *Users*: 22,400. *Lg Use*: Used by all. *Lg Dev*: Literature. NT: 1995. *Writing*: Bengali (Bangla) script. Latin script.

## 5 (Dispersed)

- Bihari** [[urd](#)] *Users*: 250,000 in Bangladesh (2009 UNHR). *Lg Use*: Home, village, religion, market. Used by all. Positive attitudes. Also use Bengali [[ben](#)]. Also use English [[eng](#)]. Also use Standard Arabic [[arb](#)]. *Writing*: Arabic script, Naskh variant. Arabic script, Nastaliq variant, primary usage. Braille script. Devanagari script, used in India (Ahmad 2011). *Worldwide*: Total users in all countries: 231,717,940 (as L1: 70,555,140; as L2: 161,162,800).
- English** [[eng](#)] *Users*: 29,300,000 in Bangladesh (2020 Euromonitor International), L2 users. *Lg Use*: Used as L2 by Bihari [[urd](#)], Mahali [[mjx](#)], War-Jaintia [[aml](#)]. *Writing*: Braille script. Deseret Alphabet, developed in 1854 with limited usage until 1877. Duployan shorthand. Latin script, primary usage. Shavian (Shaw) script, no longer in use. *Worldwide*: Total users in all countries: 1,456,448,320 (as L1: 379,682,200; as L2: 1076,766,120).
- Garó** [[grt](#)] *Users*: 120,000 in Bangladesh (2005). *Status*: Used as LWC among all Mandi. *Lg Use*: Used by all. Also use Bengali [[ben](#)]. Also use Hajong [[haj](#)]. Used as L2 by Atong [[aot](#)], Hajong [[haj](#)], Koch [[kdq](#)], Lyngngam [[lyg](#)], Megam [[mef](#)]. *Writing*: Bengali (Bangla) script. Braille script, used since 1998. Latin script. *Worldwide*: Total users in all countries: 1,270,000.
- Meitei** [[mni](#)] *Users*: 15,000 in Bangladesh (2003). 300 monolinguals. *Lg Use*: Vigorous. Home, village. Used by all. Positive attitudes. Also use Bengali [[ben](#)], especially youth. Also use Bishnupuriya [[bpy](#)]. Also use Sylheti [[syl](#)]. Used as L2 by Bishnupuriya [[bpy](#)]. *Writing*: Bengali (Bangla) script. Braille script. Meitei Mayek script. *Worldwide*: Total users in all countries: 1,775,000.
- Rakhine** [[rki](#)] *Users*: 200,000 in Bangladesh (2011 SIL). *Lg Use*: Used by all. Positive attitudes. Many also use Bengali [[ben](#)], especially men. Also use Burmese [[mya](#)]. Also use Chittagonian [[ctg](#)]. *Writing*: Myanmar (Burmese) script, informal and non-standardized use. *Worldwide*: Total users in all countries: 2,020,000 (as L1: 1,000,000; as L2: 1,020,000).
- Santhali** [[sat](#)] *Users*: 225,000 in Bangladesh (2011). *Lg Use*: Home, village, church, market. Used by all. Positive attitudes. Many also use Rangpuri [[rkt](#)]. Used as L2 by Koda [[cdz](#)], Mahali [[mjx](#)]. *Writing*: Bengali (Bangla) script. Devanagari script, used in Nepal. Latin script, used in Bangladesh. Ol Chiki (Ol Cemet', Ol, Santali) script. Oriya (Odia) script. *Worldwide*: Total users in all countries: 7,621,180 (as L1: 7,620,200; as L2: 980).

## 6a (Vigorous)

- Bangla Sign Language** [[ins](#)] *Users*: 815,000 in Bangladesh (2021 DBS/DOOR/SIL). Estimated 500,000–1,000,000, assuming 0.3%–0.6% of the total population. Another estimate: 2,600,000 (2014 Disabled Peoples' International Pacific-Asia Region). *Worldwide*: Total users in all countries: 6,815,000.
- Bishnupuriya** [[bpy](#)] *Users*: 40,000 in Bangladesh (2003). 400 monolinguals. *Lg Use*: Vigorous. Home, village. Used by all. Positive attitudes. Also use Bengali [[ben](#)]. Also use Meitei [[mni](#)]. Used as L2 by Meitei [[mni](#)]. *Writing*: Bengali (Bangla) script. *Worldwide*: Total users in all

countries: 119,600.

**Chak** [ckh] *Users:* 3,000 in Bangladesh (Bradley 2007b). *Lg Use:* Used by all. Most also use Marma [rmz], especially those living near Bandarban. Also use Bengali [ben]. Used as L2 by Marma [rmz], Tangchangya [tnv], Tippera [tpe]. *Lg Dev:* Dictionary. Grammar. *Worldwide:* Total users in all countries: 4,000.

**Chin, Asho** [csh] *Users:* 4,000 in Bangladesh (2011). *Lg Use:* Used by all. Most also use Marma [rmz]. *Writing:* Latin script. Myanmar (Burmese) script, primary usage. *Worldwide:* Total users in all countries: 174,000.

**Chin, Khumi** [cnk] *Users:* 4,000 in Bangladesh (2018). *Lg Use:* Used by all. Most also use Marma [rmz]. *Writing:* Latin script. *Worldwide:* Total users in all countries: 64,000.

**Koch** [kdq] *Users:* 6,000 in Bangladesh (2006 SIL). *Lg Use:* Home, community. Used by all. Positive attitudes. Also use Garo [grt]. *Writing:* Bengali (Bangla) script. *Worldwide:* Total users in all countries: 42,400.

**Koda** [cdz] *Users:* 1,300 in Bangladesh (2005). *Lg Use:* May be in slow transition to colloquial Bengali [ben]. Education rate low. 60% say Bengali is their best language. Home, community. Used by all. Negative attitudes. Considered inferior to Bengali [ben] which is favored for education and economic advancement. Also use Bengali [ben]. Also use Santhali [sat], especially those who travel. *Writing:* Bengali (Bangla) script. *Worldwide:* Total users in all countries: 48,600.

**Kok Borok** [trp] *Users:* 5,000 in Bangladesh. *Lg Use:* Used by all. *Writing:* Bengali (Bangla) script. Latin script. *Worldwide:* Total users in all countries: 958,000.

**Kol** [ekl] *Users:* 1,660 (2012 SIL). *Lg Use:* Used by all. *Writing:* Latin script.

**Mahali** [mjx] *Users:* 3,000 in Bangladesh (2010 SIL). Ethnic population: 3,000 (2004 SIL). *Lg Use:* Home, village. Used by all. All also use Bengali [ben]. Most also use Santhali [sat]. Some also use English [eng]. Some also use Sadri [sck]. *Writing:* Bengali (Bangla) script. Latin script, used in Bangladesh. *Worldwide:* Total users in all countries: 29,400.

**Megam** [mef] *Users:* 6,870 (2000). *Lg Use:* Home, village. Used by all. Positive attitudes. Also use Atong [aot]. Also use Garo [grt], particularly the Abeng dialect, with most other Garo speakers. *Writing:* Unwritten.

**Tangchangya** [tnv] *Users:* 21,600 (1991 census). *Lg Use:* Used by all. Also use Chak [ckh], in Khagrachari and Rangamati districts. *Writing:* Chakma script.

**War-Jaintia** [aml] *Users:* 16,000 in Bangladesh (2003 SIL). 4,000 monolinguals. *Lg Use:* Vigorous. Home, village. Used by all. Also use Bengali [ben]. Also use English [eng]. Also use Khasi [kha]. Also use Sylheti [syl]. Used as L2 by Bengali [ben], Pnar [pbv]. *Lg Dev:* Grammar. *Writing:* Unwritten. *Worldwide:* Total users in all countries: 67,600.

## 6b (Threatened)

**Atong** [aot] *Users:* 5,400 in Bangladesh. *Lg Use:* Home, village. Some of all ages. Also use Garo [grt] (Van Breugel 2014). Also use Bengali [ben], with good proficiency. Used as L2 by Megam [mef]. *Lg Dev:* Dictionary. Grammar. Texts. *Writing:* Bengali (Bangla) script. Latin script. *Worldwide:* Total users in all countries: 10,000.

**Khasi** [kha] *Users:* Very few speakers. *Lg Use:* Also use Bengali [ben]. Used as L2 by War-Jaintia [aml]. *Writing:* Bengali (Bangla) script, no longer in use. Latin script, used since about 1842. *Worldwide:* Total users in all countries: 1,050,000.

**Kurux** [kru] *Users:* 50,000 in Bangladesh (2011), decreasing. Ethnic population: 50,000 (2011). *Lg Use:* Not as vital as other indigenous languages. Some young people, all adults. Neutral attitudes. Most also use Rangpuri [rkt]. Also use Bengali [ben], which is used in most settings outside the home or village, with positive attitudes towards it. *Writing:* Devanagari script. *Worldwide:* Total users in all countries: 2,084,390 (as L1: 2,083,700; as L2: 690).

**Mizo** [lus] *Users:* 250 in Bangladesh (2007 census). *Lg Use:* Some young people, all adults. *Writing:* Bengali (Bangla) script. Braille script. Latin script, primary usage. *Worldwide:* Total users in all countries: 843,750.

**Mundari** [unr] *Users:* 2,500 in Bangladesh (2005 Caritas Bangladesh). Ethnic population: 5,000. *Lg Use:* Primarily in Rajshahi Division. Among the Mundaris living on Sylhet tea estates, Mundari language use is much lower. Home, village. Some of all ages. Positive attitudes. Most also use Rangpuri [rkt]. *Writing:* Bengali (Bangla) script. Devanagari script, used in India. Latin script. Nag Mundari script. Oriya (Odia) script. *Worldwide:* Total users in all countries: 1,170,280.

**Pangkhua** [pkh] *Users:* 2,400 in Bangladesh (2015 Z. Akter). Ethnic population: 4,000 (2021 Joshua Project). *Lg Use:* Some young people, all adults. Also use Bengali [ben], as the medium of education. *Writing:* Devanagari script. Latin script.

**Pnar** [pbv] *Users:* 4,000 in Bangladesh (2002). *Lg Use:* Also use War-Jaintia [aml]. *Writing:* Latin script. *Worldwide:* Total users in all countries: 323,000.

**Rohingya** [rhg] *Users:* 947,000 in Bangladesh (2017 The Arakan Project). *Lg Use:* Also use Chittagonian [ctg]. *Writing:* Arabic script, Naskh variant. Hanifi Rohingya script, some development in immigrant communities for all three scripts. Latin script. *Worldwide:* Total users in all countries: 2,529,270.

**Sadri, Oraon** [sdr] *Users:* 166,000 (2000). *Lg Use:* Some young people, all adults. Most also use Bengali [ben], quite fluently. Some also use Rangpuri [rkt], in Rangpur division. *Lg Dev:* Literature. NT: 2003. *Writing:* Bengali (Bangla) script. Latin script.

## 7 (Shifting)

**Lyngngam** [lyg] *Users:* 1,000 in Bangladesh. *Lg Use:* Most shifting to Bengali [ben]. Many

shifting to Garo [grt]. *Worldwide*: Total users in all countries: 12,600.

**Riang** [ria] *Users*: 500 in Bangladesh (2007). *Lg Use*: Shifting to Chakma [ccp]. *Writing*: Latin script. *Worldwide*: Total users in all countries: 59,000.

**Sauria Paharia** [mjt] *Users*: 7,000 in Bangladesh (2007). *Lg Use*: Shifting to Rangpuri [rkt]. *Writing*: Bengali (Bangla) script. Devanagari script. *Worldwide*: Total users in all countries: 242,000.

## Unestablished

**Odia** [ory] *Users*: 32,500 in Bangladesh (2000). *Writing*: Braille script. Oriya (Odia) script, primary usage. *Worldwide*: Total users in all countries: 39,763,607 (as L1: 34,463,280; as L2: 5,300,327).

**Punjabi, Eastern** [pan] *Users*: 23,700 in Bangladesh (2000). *Writing*: Arabic script, Naskh variant. Gurmukhi script, primary usage. Khojki script. *Worldwide*: Total users in all countries: 52,077,070 (as L1: 48,299,070; as L2: 3,778,000).

## Languages by Division

This index gives an alphabetical listing of the top-level administrative subdivisions within Bangladesh. Under the name of each division is a list of the language communities that are located within its area.

### Barisal

Rakhine [rki], 19

### Chittagong

Bihari [urd], 12

Chak [ckh], 12

Chakma [ccp], 13

Chin, Asho [csh], 13

Chin, Bawm [bgr], 13

Chin, Khumi [cnk], 13

Chittagonian [ctg], 14

Kok Borok [trp], 15

Marma [rmz], 17

Mizo [lus], 17

Mru [mro], 18

Pangkhua [pkh], 18

Rakhine [rki], 19

Riang [ria], 20

Rohingya [rhg], 20

Tangchangya [tnv], 21

Tippera [tpe], 21

Usoi [usi], 21

### Dhaka

Atong [aot], 11

Bihari [urd], 12

Garo [grt], 14

Koch [kdq], 15

Lynggam [lyg], 16

Megam [mef], 17

### Khulna

Bihari [urd], 12

Sadri, Oraon [sdr], 20

### Mymensingh

Hajong [haj], 15

### Rajshahi

Koda [cdz], 15

Kol [ekl], 16

Mahali [mjx], 16

Mundari [unr], 18

Rangpuri [rkt], 19

Sadri, Oraon [sdr], 20

Santhali [sat], 20

Sauria Paharia [mjt], 21

### Rangpur

Bihari [urd], 12

Kurux [kru], 16

Mundari [unr], 18

Rangpuri [rkt], 19

Sadri, Oraon [sdr], 20

Santhali [sat], 20

Sauria Paharia [mjt], 21

### Sylhet

Bishnupuriya [bpy], 12

Garo [grt], 14

Hajong [haj], 15

Khasi [kha], 15

Kok Borok [trp], 15

Meitei [mni], 17

Mundari [unr], 18

Pnar [pbv], 19

Sadri, Oraon [sdr], 20

Sylheti [syl], 21

War-Jaintia [aml], 22

## Languages by Family

This index gives an alphabetical listing of the linguistic classifications used for the established languages of Bangladesh. The entries in this index represent the full path in the linguistic family tree from the highest level grouping down to the lowest. All the languages listed in the same entry are members of the same lowest-level subgroup. The referenced page contains the main entry that describes the language.

### **Austro-Asiatic, Mon-Khmer, Northern Mon-Khmer, Khasian**

- Khasi [kha], 15
- Lyngngam [lyg], 16
- Pnar [pbv], 19
- War-Jaintia [aml], 22

### **Austro-Asiatic, Munda, North Munda, Kherwari, Mundari**

- Koda [cdz], 15
- Kol [ekl], 16
- Mundari [unr], 18

### **Austro-Asiatic, Munda, North Munda, Kherwari, Santali**

- Mahali [mjx], 16
- Santhali [sat], 20

### **Dravidian, Northern**

- Kurux [kru], 16
- Sauria Paharia [mjt], 21

### **Indo-European, Germanic, West, English**

- English [eng], 14

### **Indo-European, Indo-Iranian, Indo-Aryan, Outer Languages, Eastern, Bengali-Assamese**

- Bengali [ben], 11
- Bishnupuriya [bpy], 12
- Chakma [ccp], 13
- Chittagonian [ctg], 14
- Hajong [haj], 15
- Rangpuri [rkt], 19
- Rohingya [rhg], 20
- Sylheti [syl], 21
- Tangchangya [tnv], 21

### **Indo-European, Indo-Iranian, Indo-Aryan, Outer Languages, Eastern, Bihari**

- Sadri, Oraon [sdr], 20

### **Indo-European, Indo-Iranian, Indo-Aryan, Western Hindi, Hindustani**

- Urdu [urd], 12

**Sign language, Deaf community sign language**

Indian Sign Language [ins], 11

**Sino-Tibetan, Tibeto-Burman**

Meitei [mni], 17

**Sino-Tibetan, Tibeto-Burman, Kuki-Chin, Central**

Pangkhuah [pkh], 18

**Sino-Tibetan, Tibeto-Burman, Kuki-Chin, Central, Lai**

Chin, Bawm [bgr], 13

**Sino-Tibetan, Tibeto-Burman, Kuki-Chin, Central, Mizo**

Mizo [lus], 17

**Sino-Tibetan, Tibeto-Burman, Kuki-Chin, Peripheral, Southern**

Chin, Khumi [cnk], 13

**Sino-Tibetan, Tibeto-Burman, Kuki-Chin, Peripheral, Southern, Cho-Asho, Asho**

Chin, Asho [csh], 13

**Sino-Tibetan, Tibeto-Burman, Ngwi-Burmese, Burmish, Southern**

Marma [rmz], 17

Rakhine [rki], 19

**Sino-Tibetan, Tibeto-Burman, Ngwi-Burmese, Mru**

Mru [mro], 18

**Sino-Tibetan, Tibeto-Burman, Sal, Boro-Garo**

Garo [grt], 14

Megam [mef], 17

Tippera [tpe], 21

**Sino-Tibetan, Tibeto-Burman, Sal, Boro-Garo, Dimasa-Kokborok, Kok Borok**

Kok Borok [trp], 15

Riang [ria], 20

Usoi [usi], 21

**Sino-Tibetan, Tibeto-Burman, Sal, Boro-Garo, Koch**

Atong [aot], 11

Koch [kdq], 15

**Sino-Tibetan, Tibeto-Burman, Sal, Jingppaw-Asakia, Asakian**

Chak [ckh], 12

## Language Code Index

This index gives an alphabetical listing of all 44 three-letter codes that are used in this work to uniquely identify languages. The referenced page contains the main entry that describes the language. All codes listed are part of the ISO 639-3 standard; see <http://www.sil.org/iso639-3/>.

<b>aml</b>	War-Jaintia, <a href="#">22</a>	<b>mjt</b>	Sauria Paharia, <a href="#">21</a>
<b>aot</b>	Atong (India), <a href="#">11</a>	<b>mjx</b>	Mahali, <a href="#">16</a>
<b>ben</b>	Bengali, <a href="#">11</a>	<b>mni</b>	Meitei, <a href="#">17</a>
<b>bgr</b>	Chin, Bawm, <a href="#">13</a>	<b>mro</b>	Mru, <a href="#">18</a>
<b>bpy</b>	Bishnupuriya, <a href="#">12</a>	<b>ory</b>	Odia, <a href="#">18</a>
<b>ccp</b>	Chakma, <a href="#">13</a>	<b>pan</b>	Punjabi, Eastern, <a href="#">19</a>
<b>cdz</b>	Koda, <a href="#">15</a>	<b>pbv</b>	Pnar, <a href="#">19</a>
<b>ckh</b>	Chak, <a href="#">12</a>	<b>pkh</b>	Pangkhoa, <a href="#">18</a>
<b>cnk</b>	Chin, Khumi, <a href="#">13</a>	<b>rhg</b>	Rohingya, <a href="#">20</a>
<b>csb</b>	Chin, Asho, <a href="#">13</a>	<b>ria</b>	Riang, <a href="#">20</a>
<b>ctg</b>	Chittagonian, <a href="#">14</a>	<b>rki</b>	Rakhine, <a href="#">19</a>
<b>ekl</b>	Kol (Bangladesh), <a href="#">16</a>	<b>rkt</b>	Rangpuri, <a href="#">19</a>
<b>eng</b>	English, <a href="#">14</a>	<b>rmz</b>	Marma, <a href="#">17</a>
<b>grt</b>	Garo, <a href="#">14</a>	<b>sat</b>	Santhali, <a href="#">20</a>
<b>haj</b>	Hajong, <a href="#">15</a>	<b>sdr</b>	Sadri, Oraon, <a href="#">20</a>
<b>ins</b>	Indian Sign Language, <a href="#">11</a>	<b>syl</b>	Sylheti, <a href="#">21</a>
<b>kdq</b>	Koch, <a href="#">15</a>	<b>tnv</b>	Tangchangya, <a href="#">21</a>
<b>kha</b>	Khasi, <a href="#">15</a>	<b>tpe</b>	Tippera, <a href="#">21</a>
<b>kru</b>	Kurux, <a href="#">16</a>	<b>trp</b>	Kok Borok, <a href="#">15</a>
<b>lus</b>	Mizo, <a href="#">17</a>	<b>unr</b>	Mundari, <a href="#">18</a>
<b>lyg</b>	Lyngngam, <a href="#">16</a>	<b>urd</b>	Urdu, <a href="#">12</a>
<b>mef</b>	Megam, <a href="#">17</a>	<b>usi</b>	Usoi, <a href="#">21</a>

## Language Name Index

This index lists every name that appears in the language listings as a primary or alternate name of a language or dialect. The following abbreviations are used in the index entries: *alt.* ‘alternate name for’; *alt. dial.* ‘alternate name for a dialect of’; *dial.* ‘primary name for a dialect of’; *pej. alt.* ‘pejorative alternate name for’; and *pej. alt. dial.* ‘pejorative alternate name for a dialect of’. Each index entry resolves to the primary name for the language with which the indexed name is associated, followed by square brackets containing the unique three-letter language code from ISO 639-3. The referenced page contains the main entry that describes the language. If the language appears on a map, the entry for the primary name also lists page numbers for the maps on which the language occurs.

- Abeng**, *dial.* Garo [grt], 14
- Achik**, *dial.* Garo [grt], 14
- Anchalit Bangla**, *alt.* Rangpuri [rkt], 19
- Anok**, *dial.* Mru [mro], 18  
*dial.* Tippera [tpe], 21
- Arkanese-Marma**, *alt.* Marma [rmz], 17
- Aslong**, *dial.* Tippera [tpe], 21
- Atong** [aot], 11, 26
- A'tong**, *alt.* Atong [aot], 11
- atsaʔ**, *alt.* Chak [ckh], 12
- Attong**, *alt.* Atong [aot], 11
- Bahe**, *alt.* Rangpuri [rkt], 19
- Bahe Bangla**, *alt.* Rangpuri [rkt], 19
- Bangala**, *alt.* Bengali [ben], 11
- Bangla Ishara Vasha**, *alt.* Indian Sign Language [ins], 11
- Bangla Sign Language** [ins], 11, 0
- Bangla-Bhasa**, *alt.* Bengali [ben], 11
- Bangladesh Sign Language**, *alt.* Indian Sign Language [ins], 11
- Bangladeshi Sign Language**, *alt.* Indian Sign Language [ins], 11
- Barisal**, *dial.* Bengali [ben], 11
- Bawm**, *alt.* Chin, Bawm [bgr], 13
- Bawm hawlh**, *alt.* Chin, Bawm [bgr], 13
- Bawn**, *alt.* Chin, Bawm [bgr], 13
- Bawng**, *alt.* Chin, Bawm [bgr], 13
- Bengali** [ben], 11, 24, 25, 26, 27
- Bengali Sign Language**, *alt.* Indian Sign Language [ins], 11
- Bihari** [urd], 12, 24, 25, 27
- Bishnupria**, *alt.* Bishnupuriya [bpy], 12
- Bishnupriya**, *alt.* Bishnupuriya [bpy], 12
- Bishnupriya Manipuri**, *alt.* Bishnupuriya [bpy], 12
- Bishnupuriya** [bpy], 12, 26
- Bisna Puriya**, *alt.* Bishnupuriya [bpy], 12
- Bom**, *alt.* Chin, Bawm [bgr], 13
- Borail Sadri**, *dial.* Sadri, Oraon [sdr], 20
- Brak**, *dial.* Garo [grt], 14
- Chak** [ckh], 12, 27
- Chakma** [ccp], 13, 27
- Changma Kodha**, *alt.* Chakma [ccp], 13
- Changma Vaj**, *alt.* Chakma [ccp], 13
- Chapra**, *dial.* Koch [kdq], 15
- Chatgaiyan Buli**, *alt.* Chittagonian [ctg], 14
- Chatgaya**, *alt.* Chittagonian [ctg], 14
- Chibok**, *dial.* Garo [grt], 14
- Chin, Asho** [csh], 13, 27  
*see* Chin, Asho [csh], 13
- Chin, Bawm** [bgr], 13, 27  
*see* Chin, Bawm [bgr], 13

- Chin, Khumi** [cnk], 13, 27  
*see* Chin, Khumi [cnk], 13
- Chittagonian** [ctg], 14, 27
- Chittagonian Bengali**, *alt.* Chittagonian [ctg], 14
- Colh**, *alt.* Mundari [unr], 18
- Cossyah**, *alt.* Khasi [kha], 15
- Debbarma**, *alt.* Kok Borok [trp], 15
- Dendak**, *dial.* Tippera [tpe], 21
- Deshi Bhasa**, *alt.* Rangpuri [rkt], 19
- Dhekia**, *alt.* Rangpuri [rkt], 19
- Dhekri**, *alt.* Rangpuri [rkt], 19
- Dowpreng**, *dial.* Mru [mro], 18
- Dual**, *dial.* Garo [grt], 14
- English** [eng], 14
- Gabing**, *dial.* Tippera [tpe], 21
- Garo** [grt], 14, 26
- Garrow**, *alt.* Garo [grt], 14
- Hajang**, *alt.* Hajong [haj], 15
- Hajong** [haj], 15, 26
- Har**, *alt.* Santhali [sat], 20
- Har Rar**, *alt.* Santhali [sat], 20
- Hasada'**, *dial.* Mundari [unr], 18
- Hill Tippera**, *alt.* Tippera [tpe], 21
- Hindu Meitei**, *dial.* Meitei [mni], 17
- Hor**, *alt.* Kol [ekl], 16  
*alt.* Santhali [sat], 20
- Horo**, *alt.* Mundari [unr], 18
- Hualngo**, *alt.* Mizo [lus], 17
- Indian Sign Language**, *alt.* Indian Sign Language [ins], 11
- Joloi**, *dial.* Usoi [usi], 21
- Kahasi**, *alt.* Khasi [kha], 15
- Kaobrung**, *alt.* Usoi [usi], 21
- Kau Bru**, *alt.* Riang [ria], 20
- Kau Brung**, *alt.* Usoi [usi], 21
- Kema**, *dial.* Tippera [tpe], 21
- Kera'**, *dial.* Mundari [unr], 18
- Kewa**, *dial.* Tippera [tpe], 21
- Khali**, *dial.* Tippera [tpe], 21
- Khumi**, *alt.* Chin, Khumi [cnk], 13  
*dial.* Chin, Khumi [cnk], 13
- Khasi** [kha], 15, 26
- Khasie**, *alt.* Khasi [kha], 15
- Khasiyas**, *alt.* Khasi [kha], 15
- Khassee**, *alt.* Khasi [kha], 15
- Khimi**, *dial.* Chin, Khumi [cnk], 13
- Khuchia**, *alt.* Khasi [kha], 15
- Khulna**, *dial.* Bengali [ben], 11
- Khumi**, *alt.* Chin, Khumi [cnk], 13
- Khumi Chin**, *alt.* Chin, Khumi [cnk], 13
- Khuni**, *alt.* Chin, Khumi [cnk], 13
- Khweymi**, *pej. alt.* Chin, Khumi [cnk], 13
- Khyang**, *alt.* Chin, Asho [csh], 13  
*dial.* Chin, Asho [csh], 13
- Khyeng**, *alt.* Chin, Asho [csh], 13
- Koc**, *alt.* Koch [kdq], 15
- Kocch**, *alt.* Koch [kdq], 15
- Koce**, *alt.* Koch [kdq], 15
- Koch** [kdq], 15, 26
- Kochboli**, *alt.* Koch [kdq], 15
- Koda** [cdz], 15, 25
- Kok Borok** [trp], 15, 26, 27  
*alt.* Tippera [tpe], 21
- Kol** [ekl], 16, 25
- Konch**, *alt.* Koch [kdq], 15
- Kongtu**, *dial.* Chin, Asho [csh], 13
- Kurukh**, *alt.* Kurux [kru], 16
- Kurux** [kru], 16, 25
- Kyi**, *alt.* Khasi [kha], 15
- Laitu**, *dial.* Chin, Asho [csh], 13
- Latar**, *dial.* Mundari [unr], 18
- Lei**, *alt.* Mizo [lus], 17
- Lusai**, *alt.* Mizo [lus], 17

- Lushai**, *alt.* Mizo [lus], 17
- Lushei**, *alt.* Mizo [lus], 17
- Lyngngam** [lyg], 16, 26
- Madai Gang**, *dial.* Bishnupuriya [bpy], 12
- Mahali** [mjx], 16, 25
- Mahle**, *alt.* Mahali [mjx], 16
- Malto**, *alt.* Sauria Paharia [mjt], 21
- Mandari**, *alt.* Mundari [unr], 18
- Mande**, *alt.* Garo [grt], 14
- Mandi**, *alt.* Garo [grt], 14
- Manipuri**, *alt.* Meitei [mni], 17
- Margan**, *dial.* Koch [kdq], 15
- Marma** [rmz], 17, 27
- Maru**, *alt.* Mru [mro], 18
- Meetei**, *alt.* Meitei [mni], 17
- Megam** [mef], 17, 26  
*alt.* Lyngngam [lyg], 16
- Meitei** [mni], 17, 26
- Meitei Manipuri**, *alt.* Meitei [mni], 17
- Meithei**, *alt.* Meitei [mni], 17
- Migam**, *alt.* Megam [mef], 17
- Mizo** [lus], 17, 27
- Mogh**, *pej. alt.* Marma [rmz], 17  
*pej. alt.* Rakhine [rki], 19
- Mokkan Tila Sadri**, *dial.* Sadri, Oraon [sdr], 20
- Mondari**, *alt.* Mundari [unr], 18
- Mraima**, *alt.* Marma [rmz], 17
- Mro**, *alt.* Mru [mro], 18
- Mru** [mro], 18, 27
- Mrung**, *alt.* Mru [mro], 18
- Munari**, *alt.* Mundari [unr], 18
- Munda**, *alt.* Mundari [unr], 18
- Mundari** [unr], 18, 25
- Murung**, *alt.* Mru [mro], 18
- Mymensingh**, *dial.* Bengali [ben], 11
- Naguri**, *dial.* Mundari [unr], 18
- Naitong**, *dial.* Tippera [tpe], 21
- Negam**, *alt.* Megam [mef], 17
- Noakhali**, *dial.* Bengali [ben], 11
- Nurpur Sadri**, *dial.* Sadri, Oraon [sdr], 20
- Oraon**, *alt.* Kurux [kru], 16
- Pahan**, *alt.* Sadri, Oraon [sdr], 20
- Paharia**, *alt.* Sauria Paharia [mjt], 21
- Pangal**, *alt. dial.* Meitei [mni], 17
- Pangan**, *dial.* Meitei [mni], 17
- Pangkhu**, *alt.* Pangkhua [pkh], 18
- Pangkhua** [pkh], 18, 27
- Panji**, *dial.* Usoi [usi], 21
- Pankho**, *alt.* Pangkhua [pkh], 18
- Pankhu**, *alt.* Pangkhua [pkh], 18
- Panko**, *alt.* Pangkhua [pkh], 18
- Phatung**, *dial.* Tippera [tpe], 21
- Pnar** [pbv], 19, 26
- Polia**, *alt.* Rangpuri [rkt], 19
- Eastern Punjabi**, *see* Punjabi, Eastern [pan], 19
- Qin**, *alt.* Chin, Asho [csh], 13
- Rajar Gang**, *dial.* Bishnupuriya [bpy], 12
- Rakhain**, *alt.* Rakhine [rki], 19
- Rakhine** [rki], 19, 24, 27  
*dial.* Rakhine [rki], 19
- Rakkhaine**, *alt.* Rakhine [rki], 19
- Rangpuri** [rkt], 19, 25
- Reang**, *alt.* Rieng [ria], 20
- Riang** [ria], 20, 27
- Rohinga**, *alt.* Rohingya [rhg], 20
- Rohingya** [rhg], 20, 27
- Ruwaingya**, *alt.* Rohingya [rhg], 20
- Sadri, Oraon** [sdr], 20, 25  
*see* Sadri, Oraon [sdr], 20
- Sailau**, *alt.* Mizo [lus], 17
- Sak**, *alt.* Chak [ckh], 12
- Sakma**, *alt.* Chakma [ccp], 13
- Sandal**, *alt.* Santhali [sat], 20

- Sangma**, *alt.* Chakma [ccp], 13
- Sangtal**, *alt.* Santhali [sat], 20
- Santal**, *alt.* Santhali [sat], 20
- Santali**, *alt.* Santhali [sat], 20
- Santhali** [sat], 20, 25
- Satar**, *alt.* Santhali [sat], 20
- Sauria Paharia** [mjt], 21, 25
- Sho**, *alt.* Chin, Asho [csh], 13
- Shoa**, *alt.* Chin, Asho [csh], 13
- Sileti**, *alt.* Sylheti [syl], 21
- Siloti**, *alt.* Sylheti [syl], 21
- Sitwe**, *dial.* Rakhine [rki], 19
- Sonthal**, *alt.* Santhali [sat], 20
- Srihattia**, *alt.* Sylheti [syl], 21
- Sungma**, *dial.* Mru [mro], 18
- Sylheti** [syl], 21, 26
- Sylhetti**, *alt.* Sylheti [syl], 21
- Sylhetti Bangla**, *alt.* Sylheti [syl], 21
- Syloti**, *alt.* Sylheti [syl], 21
- Syloty**, *alt.* Sylheti [syl], 21
- Takam**, *alt.* Chakma [ccp], 13
- Tanchangya**, *alt.* Tangchangya [tnv], 21
- Tangchangya** [tnv], 21, 27
- Tintekiya**, *dial.* Koch [kdq], 15
- Tippera** [tpe], 21, 27
- Tipperah**, *alt.* Tippera [tpe], 21
- Tippurah**, *alt.* Tippera [tpe], 21
- Tipra**, *alt.* Tippera [tpe], 21
- Tipura**, *alt.* Kok Borok [trp], 15  
*alt.* Tippera [tpe], 21
- Tongpai**, *dial.* Tippera [tpe], 21
- Triperah**, *alt.* Tippera [tpe], 21
- Tripura**, *alt.* Kok Borok [trp], 15  
*alt.* Tippera [tpe], 21
- Tripuri**, *alt.* Kok Borok [trp], 15
- Tsak**, *alt.* Chak [ckh], 12
- Uchai Sadri**, *dial.* Sadri, Oraon [sdr], 20
- Unshoi**, *alt.* Usoi [usi], 21
- Unsuivy**, *alt.* Usoi [usi], 21
- Uraon**, *alt.* Kurux [kru], 16
- Urdu**, *alt.* Urdu [urd], 12
- Ushoi**, *alt.* Usoi [usi], 21
- Usoi** [usi], 21, 27
- Usui**, *alt.* Usoi [usi], 21
- War-Jaintia** [aml], 22, 26  
*dial.* War-Jaintia [aml], 22
- War-Khasi**, *alt.* War-Jaintia [aml], 22  
*dial.* War-Jaintia [aml], 22
- WheIngo**, *alt.* Mizo [lus], 17
- Yindi**, *dial.* Chin, Khumi [cnk], 13
- Yindu**, *alt. dial.* Chin, Khumi [cnk], 13

## Bibliography

- Bradley, D. 2007b. Languages of Mainland South-East Asia. In O. Miyaoka, O. Sakiyama, and M. E. Krauss (eds.), *The vanishing languages of the Pacific Rim*, pp. 301–336. Oxford Linguistics. Oxford: Oxford University Press.
- Brauns, C. D. and L. G. Loffler. 1990. *Mru: Hill people on the border of Bangladesh*. Basel and Boston: Birkäuser Verlag.
- Breton, R. J. L. 1997. *Atlas of the languages and ethnic communities of South Asia*. New Delhi: Sage Publications India.
- Campbell, G. L. and G. King. 2011. *The concise compendium of the world's languages, 2nd ed.* New York: Routledge.
- Comrie, B. (ed.). 1987. *The world's major languages*. London: Routledge.
- Hale, A. 1982. *Research on Tibeto-Burman languages*. Trends in Linguistics: State-of-the-Art Report 14. Berlin: Mouton.
- Johnson, R. and J. Johnson. 2016. Distinction between West Bengal Sign Language and Indian Sign Language on statistical assessment. *Sign Language Studies* 16(4):473–499.
- Lewis, M. P. and G. F. Simons. 2010. Assessing endangerment: Expanding Fishman's GIDS. *Revue Roumaine de Linguistique* 55(2):103–120. [http://www.lingv.ro/RRL\\_2\\_2010\\_art01Lewis.pdf](http://www.lingv.ro/RRL_2_2010_art01Lewis.pdf). Accessed 11 January 2011.
- Matisoff, J. A., S. P. Baron, and J. B. Lowe. 1996. *Languages and dialects of Tibeto-Burman*. Sino-Tibetan Etymological Dictionary and Thesaurus Monograph Series, no. 2. Berkeley: University of California Press.
- Singh, K. S. (ed.). 1994b. *The scheduled tribes*. People of India 3. Calcutta and Delhi: Anthropological Survey of India with Oxford University Press.
- Van Breugel, S. 2014. *A grammar of Atong*. Leiden: Brill.
- Voegelin, C. F. and F. M. Voegelin. 1977. *Classification and index of the world's languages*. New York: Elsevier.