

Ethnologue: Languages of Laos

Twenty-sixth edition data

David M. Eberhard, Gary F. Simons, and Charles D. Fennig, Editors

Based on information from the *Ethnologue*, 26th edition:

Eberhard, David M., Gary F. Simons, and Charles D. Fennig (eds.). 2023. *Ethnologue: Languages of the World*. Twenty-sixth edition. Dallas, Texas: SIL International. Online: <http://www.ethnologue.com>.

For personal use only

Permission to distribute or reuse this work (in whole or in part) may be obtained through the Copyright Clearance Center at <http://www.copyright.com>.

Contents

List of Abbreviations	3
How to Use This Digest	4
Country Overview	6
Language Status Profile	7
Statistical Summaries	8
Alphabetical Listing of Languages	11
Language Map	29
Languages by Population	30
Languages by Status	36
Languages by Province	44
Languages by Family	47
Language Code Index	51
Language Name Index	53
Bibliography	63

Copyright © 2023 by SIL International

All rights reserved. No part of this publication may be reproduced, redistributed, or transmitted in any form or by any means—electronic, mechanical, photocopying, recording, or otherwise—without the prior written permission of SIL International, with the exception of brief excerpts in articles or reviews.

List of Abbreviations

A	Agent in constituent word order
<i>alt.</i>	alternate name for
<i>alt. dial.</i>	alternate dialect name for
AOV	Agent-Object-Verb
C	Consonant in canonical syllable patterns
<i>Class</i>	Language classification
CPPDCE	Convention on the Protection and Promotion of the Diversity of Cultural Expressions (2005)
CSICH	Convention for the Safeguarding of Intangible Cultural Heritage (2003)
DBS	Deaf Bible Society
<i>dial.</i>	primary dialect name for
DOOR	Deaf Opportunity Outreach
ICCPR	International Covenant on Civil and Political Rights (1966)
km	kilometer(s)
L1 / L2	first language / second (or other additional) language
<i>Lg Dev</i>	Language development
<i>Lg Use</i>	Language use
m	meter(s)
P	Patient in constituent word order
PARADISEC	Pacific And Regional Archive for Digital Sources In Endangered Cultures
<i>pej.</i>	pejorative
pl.	plural
S	Subject in constituent word order
sg.	singular
SIL	SIL International
SOV	Subject-Object-Verb
SVO	Subject-Verb-Object
<i>Type</i>	Typological information
UNCPRD	United Nations Convention on the Rights of Persons with Disabilities (2006)
UNDESA	United Nations Department of Economic and Social Affairs
UNDRIP	United Nations Declaration on the Rights of Indigenous Peoples (2007)
UNESCO	United Nations Educational, Scientific, and Cultural Organization
V	Vowel in canonical syllable patterns

How to Use This Digest

This *Ethnologue* country digest provides an extract of the information about the language situation in Laos that is published in the 26th edition of *Ethnologue: Languages of the World* (see <http://www.ethnologue.com>), including some ways of presenting the information that are not available in the online version. The digest begins with a “Country Overview” (page 6) and “Statistical Summaries” (page 8) of languages and number of speakers by language size, by language status, and by language family.

The “Alphabetical Listing of Languages” (page 11) provides detailed information on the 92 languages listed in the *Ethnologue* for the country of Laos. This includes languages that are indigenous to the country, languages that have developed well-established multigenerational speaker communities after immigrating in the past, and languages that have a significant presence in the country but are not established (that is, not being transmitted to the next generation within the country). A complete language entry has the following form and content:

Primary language name [ISO 639-3 code] (Alternate names). Autonym. *Users*: Country user population. Population stability comment. Population remarks. Monolingual population. Ethnic population. *Location*: Location. *Status*: EGIDS level. Special cases. Language function in country. *Class*: Linguistic classification. Macrolanguage membership. *Dialects*: Dialect names. Intelligibility and dialect relations. Lexical similarity. *Type*: Linguistic typology information. *Lg Use*: Remarks on use of the language. Domains of use. User age range. Language attitudes. Bilingualism remarks. Use as second language. *Lg Dev*: Literacy rates. Literacy remarks. Use in education. Publications and use in media. Revitalization efforts. Language development agencies. *DLS*: Digital support. *Writing*: Scripts used. *Other*: Non-indigenous. General remarks. Religion. *Map*: Map page. *Worldwide*: Total population in all countries. Other countries where used.

See <http://www.ethnologue.com/methodology/#languagePages> for a full description of these information elements. If the autonym contains the “?” character, this indicates a complex non-Roman character that the PDF-creating software we are using is not able to render. We regret the inconvenience.

The “Language Map” (page 29) shows the locations of the listed languages. If the location of a language is given on a map, the *Map* element of the language entry indicates the page number of the map. If the language is identified on a map by name, but that name differs from the primary name in the language entry, the name on the map is given in parentheses. If the language is represented on the map by an index number, rather than by its name, the index number is given following the page number (with a colon as separator).

Many ways of finding languages are provided. “Languages by Population” (page 30) lists the languages in order of their first-language speaker populations. “Languages by Status” (page 36) lists the languages by their level of development or endangerment as measured on EGIDS, the Expanded Graded Intergenerational Disruption Scale (Lewis and Simons 2010). “Languages by

Province” (page 44) lists the top-level administrative subdivisions of Laos and the languages located within each. “Languages by Family” (page 47) lists the languages by their linguistic classifications. “Language Code Index” (page 51) gives an alphabetical listing of all the three-letter codes from ISO 639-3 that are used in this digest to uniquely identify languages. “Language Name Index” (page 53) lists every name that appears in the language listings as a primary or alternate name of a language or dialect. A total of 523 unique names are associated with the 92 languages described in this digest.

Finally, a listing of all the published sources cited within this digest is found in “Bibliography” (page 63). The published sources are cited using standard in-text citations enclosed in parentheses, consisting of the author’s or editor’s surname followed by the year of publication. Unpublished sources including personal communications and unpublished reports are also acknowledged when specific statements or facts are attributed to them. They are identified using in-text citations enclosed in parentheses in which the year of the communication is given first, followed by the source’s first initial and surname. In such a case, there is no corresponding entry in the bibliography.

This digest is designed for use in both digital and print formats. The cross-references are thus rendered as page numbers that are hyperlinks. When using the document in printed form, simply turn to the referenced page by number. When using it in digital form, click on the blue text to jump to the cross-referenced location.

If you believe any of the information about a language in this digest is in error or if you are able to supply missing information, please send your proposed change to the editor using one of the means given below. Provide as much information as possible about the source of your information. Full bibliographic details of published sources are especially helpful.

The preferred method of submitting corrections and additions is to join our Contributor Program by applying at <http://www.ethnologue.com/contributor-program>. With a contributor account you will be entitled to complimentary access to the website and will be able to use the Contribute tab on the page for a language or country in order to propose corrections and additions. The advantage of giving feedback in this way is that it becomes part of the public record on the website. You will also be automatically notified of the editorial action.

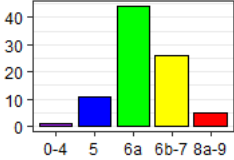
Alternatively, you may submit corrections and additions by e-mail to:

Ethnologue_Editor@sil.org

Or by post to:

Editor, Ethnologue
SIL International
7500 West Camp Wisdom Road
Dallas, TX 75236, U.S.A.

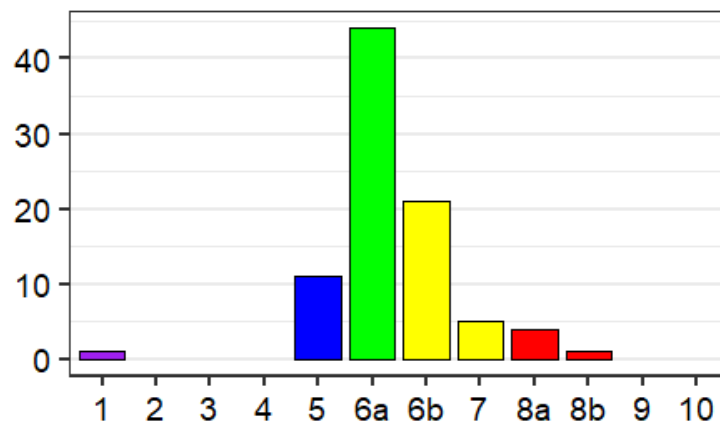
Country Overview

Name of country	Laos												
Other names	Lao People's Democratic Republic												
Population	7,379,000 (2021 UNDESA)												
Principal language	Lao												
Literacy rate	85% (2015 UNESCO)												
Deaf population	19,200												
International conventions	CPPDCE (2007), CSICH (2009), ICCPR (2009), UNCRPD (2009), UNDRIP (2007)												
General references	Bradley 2007a, Edmondson and Solnit 1997, Lebar et al 1964, Matisoff et al 1996, Thomas and Headley 1970, Wurm and Hattori 1981												
Language counts	<p>The number of established languages listed for Laos is 87. All are living languages. Of these, 73 are indigenous and 14 are non-indigenous. Furthermore, 1 is institutional, 11 are developing, 44 are vigorous, 26 are in trouble, and 5 are dying. Also listed are 5 unestablished languages.</p>  <table border="1"> <caption>Language Vitality Counts for Laos</caption> <thead> <tr> <th>Vitality Category</th> <th>Count</th> </tr> </thead> <tbody> <tr> <td>0-4</td> <td>1</td> </tr> <tr> <td>5</td> <td>11</td> </tr> <tr> <td>6a</td> <td>44</td> </tr> <tr> <td>6b-7</td> <td>26</td> </tr> <tr> <td>8a-9</td> <td>5</td> </tr> </tbody> </table>	Vitality Category	Count	0-4	1	5	11	6a	44	6b-7	26	8a-9	5
Vitality Category	Count												
0-4	1												
5	11												
6a	44												
6b-7	26												
8a-9	5												

See the next page for an explanation of the summary categories for language vitality used in the above counts and graph.

Language Status Profile

The following histogram gives a graphic profile of the established languages in Laos with respect to their status of language development versus language endangerment. This includes all of the languages appearing in the “Alphabetical Listing of Languages” (page 11) that report an EGIDS level after *Status*; macrolanguages and unestablished languages are not included in the profile. The horizontal axis plots the estimated level of development or endangerment as measured on the EGIDS scale (Lewis and Simons 2010). The height of each bar indicates the number of languages that are estimated to be at the given level. Consult “Languages by Status” (page 36) in order to see the specific languages for each level.



The color coding of the bars in the histogram above matches the color scheme used in the summary profile graph on the preceding page. In this scheme, the EGIDS levels are grouped as follows:

- Purple = Institutional (EGIDS 0–4) — The language has been developed to the point that it is used and sustained by institutions beyond the home and community.
- Blue = Developing (EGIDS 5) — The language is in vigorous use, with literature in a standardized form being used by some though this is not yet widespread or sustainable.
- Green = Vigorous (EGIDS 6a) — The language is in vigorous use among all generations and remains unstandardized.
- Yellow = In trouble (EGIDS 6b–7) — Intergenerational transmission is in the process of being broken, but the child-bearing generation can still use the language so it is possible that revitalization efforts could restore transmission of the language in the home.
- Red = Dying (EGIDS 8a–9) — The only fluent users (if any) are older than child-bearing age, so it is too late to restore natural intergenerational transmission through the home; a mechanism outside the home would need to be developed.
- Black = Extinct (EGIDS 10) — The language is no longer used and no one retains a sense of ethnic identity associated with the language.

Statistical Summaries

The “Alphabetical Listing of Languages” (page 11) provides a detailed listing of all the languages of Laos. This section steps back from the detail to offer a summary view of the language situation in the country. Specifically, it offers three numerical tabulations of the living established languages of Laos and their users: by language size, by language status, and by language family.

Summary by language size

Table 1 summarizes the distribution of living established languages in Laos by number of L1 speakers. The *Population range* column categorizes the sizes of the languages by order of magnitude (in terms of the number of digits in the population of first-language speakers). Consult “Languages by Population” (page 30) for a listing of the specific languages in each range category.

The *Count* column gives the number of living established languages within the specified population range. The *Percent* column gives the share of the count for that population range as a percentage of the total number of languages given at the bottom of the Count column. The *Cumulative* column gives the cumulative sum of the percentage of languages going from top to bottom in the column.

The *Total* column gives the total L1 population of all the languages in the given range category. The second *Percent* column gives the percentage of the total country population as estimated at the bottom of the Total column. Note that if the table has a row for Unknown, representing languages for which the *Ethnologue* does not have a population estimate, the calculation of population percentage is not able to take those languages into account. The final *Cumulative* column gives the cumulative sums of the population percentages going from top to bottom in the column.

Table 1: Distribution of languages by number of first-language speakers

Population range	Living languages			Number of speakers		
	Count	Percent	Cumulative	Total	Percent	Cumulative
1,000,000 to 9,999,999	1	1.1	1.1%	3,430,000	55.13486	55.13486%
100,000 to 999,999	8	9.2	10.3%	1,713,000	27.53528	82.67013%
10,000 to 99,999	30	34.5	44.8%	949,300	15.25933	97.92947%
1,000 to 9,999	29	33.3	78.2%	122,300	1.96589	99.89536%
100 to 999	13	14.9	93.1%	6,470	0.10400	99.99936%
10 to 99	1	1.1	94.3%	40	0.00064	100.00000%
Unknown	5	5.7	100.0%			
<i>Totals</i>	87	100.0		6,221,110	100.00000	

Summary by language status

Table 2 summarizes the distribution of living established languages in Laos by their status in terms of language development or language endangerment. The *EGIDS* column categorizes the languages by their level on the EGIDS scale. Consult “Languages by Status” (page 36) for a listing of the specific languages that have been assigned to each level. Note that the EGIDS level reported here is for the status of the language in Laos. Languages that are also used in other countries may be assigned to a different EGIDS level in those countries.

The next six columns are as in Table 1. In addition, the *Mean* column gives the average L1 population of all the languages with the given EGIDS level and the *Median* column gives the median L1 population for the languages at that level, that is, half of the languages at that level have a higher population and half have a lower population. If there are any languages with an unknown population, these are ignored in the calculation of the mean and the median.

Table 2: Distribution of languages by vitality status

EGIDS	Living languages			Number of speakers			Mean	Median
	Count	Percent	Cumulative	Total	Percent	Cumulative		
1	1	1.1	1.1%	3,430,000	55.1349	55.1349%	3,430,000	3,430,000
5	11	12.6	13.8%	1,177,300	18.9243	74.0591%	107,027	37,400
6a	44	50.6	64.4%	1,349,160	21.6868	95.7459%	30,663	20,800
6b	21	24.1	88.5%	248,630	3.9966	99.7425%	11,840	2,360
7	5	5.7	94.3%	15,730	0.2528	99.9953%	3,146	1,000
8a	4	4.6	98.9%	290	0.0047	100.0000%	72	145
8b	1	1.1	100.0%	Unknown				
<i>Totals</i>	87	100.0		6,221,110	100.0000			

Summary by language family

The genealogical classifications given in the language entries of the “Alphabetical Listing of Languages” (page 11) name 7 different top-level groups. Table 3 summarizes the distribution of living established languages and their L1 populations within these families. The columns are as for table 2, with the exception that *Cumulative* is excluded since there is no inherent ordering of the families.

Table 3: Distribution of languages by language family

Language family	Living languages		Number of speakers			
	<i>Count</i>	<i>Percent</i>	<i>Total</i>	<i>Percent</i>	<i>Mean</i>	<i>Median</i>
Austro-Asiatic	49	56.3	1,556,720	25.0	31,770	9,000
Austronesian	1	1.1	Unknown			
Hmong-Mien	4	4.6	306,900	4.9	76,725	66,200
Indo-European	1	1.1	Unknown			
Kra-Dai	20	23.0	4,131,070	66.4	206,554	14,100
Sign language	1	1.1	36,000	0.6	36,000	36,000
Sino-Tibetan	11	12.6	190,420	3.1	17,311	3,000
<i>Totals</i>	87	100.0	6,221,110	100.0		

Alphabetical Listing of Languages

Aheu [thm] (Bru, Kha Tong Luang, Phon Soung, Phonsung, So, Thavung). *Users*: 250 in Laos (Bradley 2007b). Ethnic population: 500 (Bradley 2007b). *Location*: Bolikhamxai province: Khamkeut district, near Lak Sao. *Status*: 6b* (Threatened). *Class*: Austro-Asiatic, Mon-Khmer, Viet-Muong, Thavung. *Lg Dev*: Dictionary. *Writing*: Unwritten. *Other*: Non-indigenous. Traditional religion. *Map*: 29:39. *Worldwide*: Total users in all countries: 700. Indigenous in: Thailand.

Akeu [aeu] (Aki, Akui, Gaolkheel). *Users*: 1,000 in Laos (1996 E. Johnson). *Location*: Phongsali province: Gnot Ou district. *Status*: 6a (Vigorous). *Class*: Sino-Tibetan, Tibeto-Burman, Ngwi-Burmese, Ngwi, Southern. *Lg Use*: Used by all. *Lg Dev*: Literature. Dictionary. NT: 2015. *Writing*: Latin script, developed in 2005, used mainly in Thailand and Myanmar. *Other*: Non-indigenous. *Worldwide*: Total users in all countries: 12,400. Global EGIDS level: 5 (Developing). Indigenous in: China. Also established in: Myanmar, Thailand.

Akha [ahk] (Ahka, Aini, Ak'a, Aka, Ikor, Yani, “Ekaw” *pej.*, “Hka Ko” *pej.*, “Ikaw” *pej.*, “Kaw” *pej.*, “Khako” *pej.*, “Khao Kha Ko” *pej.*, “Ko” *pej.*). *Users*: 113,000 in Laos (2015 census), based on ethnicity. *Location*: Phongsali and Luang Namtha provinces. *Status*: 5* (Dispersed). *Class*: Sino-Tibetan, Tibeto-Burman, Ngwi-Burmese, Ngwi, Southern. *Type*: SOV; noun head initial; classifiers; isolating language; 32 consonants and 11 vowels; tonal (3 tones); phonation types (lax and tense). *Lg Use*: Also use Lao [lao]. Used as L2 by Chepya [yep], Phana' [phq]. *Lg Dev*: Literature. Dictionary. Grammar. Bible: 2002. *Writing*: Latin script, used at least since 1950, used in China, Myanmar, and Thailand. Myanmar (Burmese) script, used in Myanmar. Thai script, used in Thailand. *Other*: Traditional religion, Christian. *Map*: 29:10. *Worldwide*: Total users in all countries: 616,600. Global EGIDS level: 3 (Wider communication). Also indigenous in: China, Myanmar, Thailand. Also established in: Vietnam.

Alak [alk] (Halak, Harak, Harlak, Hrlak). *Users*: 25,000 (2015 census), based on ethnicity. *Location*: Xekong province: Lamam and Thataeng districts; Attapu and Salavan provinces. *Status*: 6a* (Vigorous). *Class*: Austro-Asiatic, Mon-Khmer, Eastern Mon-Khmer, Bahnaric, Central Bahnaric. *Dialects*: None known. Reportedly similar to Bahnar [bdq], Tampuan [tpu], and Romam [rmx]. *Lg Use*: Also use Lao [lao]. Used as L2 by Lavi [lvi], Talieng [tdf]. *DLS*: Still. *Writing*: Unwritten. *Other*: Traditional religion. *Map*: 29:58.

Arem [aem] (Chombrau, Chomrau, Harème, Kri, Umo). *Users*: 250 in Laos (Enfield and Diffloth 2009). Ethnic population: 500 (1995). *Location*: Khammouan province: Nam Noy river upper reaches, both sides of Vietnam-Laos border, west of Phuc Trach. *Status*: 8a (Moribund). *Class*: Austro-Asiatic, Mon-Khmer, Viet-Muong, Chut. *Dialect*: Phòngq. *Lg Use*: Shifted to Vietnamese [vie]. Also use Eastern Bru [bru]. Also use Lao [lao]. Also use Saek [skb]. *Map*: 29:41. *Worldwide*: Total users in all countries: 270. Also indigenous in: Vietnam.

Bit [bgk] (Buxinhua, Kha Bet, Khabit, Khibit, Pasing, Phsin, Phsing, Pu Sing). *Users*: 2,370 in Laos (2015 census), based on ethnicity. *Location*: Luang Namtha province: northeast Namtha

district, and south of Boun Neua; Oudomxai province: Namo district; Phongsali province: Boun-Tai, Khua, and Mai districts, 8 villages; near China border. *Status*: 6a (Vigorous). *Class*: Austro-Asiatic, Mon-Khmer, Northern Mon-Khmer, Palaungic, Eastern Palaungic, Bit-Khang. *Type*: SVO; complex morphology (prefixing); attributives follow noun heads; adverbials precede verb heads; simple syllable structure; nontonal. *Lg Use*: Used by all. Also use Lao [lao]. *Lg Dev*: Grammar. *DLS*: Still. *Writing*: Unwritten. *Other*: Traditional religion. *Map*: 29:7. *Worldwide*: Total users in all countries: 2,570. Also indigenous in: China (Buxinhua).

Bo [bgl] (Boe, Bor, Kha Bo, Tai Bo, Thay Bo). *Users*: 8,000 (Schliesinger 2003b), based on ethnicity. *Location*: Bolikhamxai province: Lak Sao area; Khammouan province: Hinboun district, Nape area. *Status*: 6b (Threatened). *Class*: Austro-Asiatic, Mon-Khmer, Viet-Muong, Muong. *Type*: Tonal (4 tones). *Lg Use*: Some young people, all adults. Also use Lao [lao]. *DLS*: Still. *Other*: Traditional religion. *Maps*: 29:38, 29:38.

Brao [brb] (Braou, Brau, Brou, Lave, Laveh, Love, Proue, Rawe). *Users*: 26,000 in Laos (2015 census), based on ethnicity. *Location*: Attapu and Champasak provinces: Laos-Cambodia border. *Status*: 6a (Vigorous). *Class*: Austro-Asiatic, Mon-Khmer, Eastern Mon-Khmer, Bahnaric, West Bahnaric, Brao-Kravet. *Dialect*: Palau. Reportedly similar to Krung [krr], Kavet [kry], and Sou [sqj]. *Lg Use*: Used by all. Also use Lao [lao]. *Lg Dev*: Literature. Radio. Texts. Bible portions: 2007–2011. *DLS*: Emerging (0.06). *Writing*: Khmer script. Lao script. Latin script. *Other*: Traditional religion. *Map*: 29:71 (as Lave). *Worldwide*: Total users in all countries: 35,560. Global EGIDS level: 5 (Developing). Also indigenous in: Cambodia, Vietnam.

Bru, Eastern [bru] (Bru Tri). *Users*: 37,400 in Laos (2015 census), based on ethnicity. *Location*: Savannakhet province: Sepone district; Khammouan province: Boulapha district. *Status*: 5 (Developing). *Class*: Austro-Asiatic, Mon-Khmer, Eastern Mon-Khmer, Katuic, West Katuic, Bru. *Dialects*: Leun (Kaleu, Leung), Tri (Chali, So Tri, So Trii). Partially intelligible with Western Bru [brv] of Thailand. The Mangkong dialect in Vietnam and eastern Laos is a dialect of Eastern Bru, different linguistically from the Mangkong that are the same as So [sss] of Thailand. Mangkong is also an ethnic group. *Lg Use*: Vigorous. Used by all. Also use Lao [lao]. Used as L2 by Arem [aem], Upper Ta'o'ih [tth]. *Lg Dev*: Literacy rate in L1: 1%–5%. Literacy rate in L2: 15%–25%. Radio. Dictionary. Bible: 2014. *DLS*: Emerging (0.04). *Writing*: Lao script, used in Laos. Latin script, used in Vietnam. Thai script. *Other*: Traditional religion. *Map*: 29:48. *Worldwide*: Total users in all countries: 132,000. Also indigenous in: Vietnam.

Bru, Western [brv] (Bru). *Users*: 5,000 in Laos (2022 N. Cheeseman). *Location*: Khammouan and Savannakhet provinces: central and southern areas. *Status*: 6a* (Vigorous). *Class*: Austro-Asiatic, Mon-Khmer, Eastern Mon-Khmer, Katuic, West Katuic, Bru. *Lg Use*: Most also use Lao [lao]. *Lg Dev*: Dictionary. Texts. Bible portions: 2007–2015. *DLS*: Emerging (0.01). *Writing*: Lao script. Thai script. *Map*: 29:50. *Worldwide*: Total users in all countries: 25,000. Also indigenous in: Thailand.

Cham [cja] (Cam, Chăm, Chiem, Khmer Islam, Tjam, Tscham, Tsiam). Autonym: Chăm. *Users*:

Ethnic population: 340 (Schliesinger 2003a). *Location*: Viengchan Capital City: Chanthaburi district, Ban Pounsavath Tai; Savannakhet province. *Status*: 8a (Moribund). *Class*: Austronesian, Malayo-Polynesian, Malayo-Chamic, Chamic, Coastal, Cham. *Lg Use*: Older adults only. Shifted to Lao [lao]. *Lg Dev*: Literature. Radio. Dictionary. Texts. *Writing*: Arabic script, Naskh variant. Cham script. Latin script. *Other*: Non-indigenous. Muslim. *Worldwide*: Total users in all countries: 312,500. Global EGIDS level: 5 (Developing). Indigenous in: Cambodia (Western Cham), Vietnam (Western Cham). Also established in: Thailand (Western Cham). Unestablished in: France (Western Cham), Malaysia (Western Cham).

Chepya [ycp]. *Users*: 1,000 (Bradley 2007b). Ethnic population: 2,000 (Bradley 2007b). *Location*: Phongsali province. *Status*: 7 (Shifting). *Class*: Sino-Tibetan, Tibeto-Burman, Ngwi-Burmese, Ngwi, Southern. *Dialects*: None known. Related to Akeu [aeu]. *Lg Use*: Shifting to Akha [ahk] (Bradley 2007b). *DLS*: Still.

Chinese, Mandarin [cmn]. *Users*: 66,000 in Laos (2018 J. Leclerc), based on ethnicity. *Status*: Unestablished. *Class*: Sino-Tibetan, Chinese. *Type*: SVO; prepositions; noun head final; 6 full (concrete meaning) word classes; no articles; passives; 24 consonants, 8 vowels, 6 diphthongs; tonal (4 phonemic tones). *Lg Dev*: Fully developed. Bible: 1874–1983. *Writing*: Bopomofo script, used since 1913, revised in 1920 and 1932, mainly used in Taiwan. Braille script. Han script, Simplified variant, used since 1956, official in Mainland China (1956) and Singapore (1969), also used elsewhere. Han script, Traditional variant, used since mid-19th century, official in Taiwan, also used elsewhere. Latin script. *Other*: Non-indigenous. *Worldwide*: Total users in all countries: 1,138,222,350 (as L1: 939,237,350; as L2: 198,985,000). Global EGIDS level: 0 (International). Indigenous in: China. Also established in 17 other countries and unestablished in 60 more.

Chinese, Yue [yue]. *Users*: 18,000 in Laos (2018 J. Leclerc), based on ethnicity. *Status*: Unestablished. *Class*: Sino-Tibetan, Chinese. *Type*: SVO; prepositions; genitives, relatives, adjectives, numerals before noun heads; noun classifiers; no articles; 18 consonants, 7 vowels; tonal (6 tones: 3 level, 3 contour). *Lg Dev*: Fully developed. Bible: 1894–1981. *Writing*: Braille script, used in Hong Kong. Han script, Simplified variant. Han script, Traditional variant, official usage in Hong Kong and Macau, also used elsewhere. Latin script, used since mid-19th century. *Other*: Non-indigenous. *Worldwide*: Total users in all countries: 86,633,370 (as L1: 86,116,370; as L2: 517,000). Global EGIDS level: 2 (Provincial). Indigenous in: China, China–Hong Kong, China–Macao. Also established in 12 other countries and unestablished in 18 more.

Chut [scb] (May, Ruc, Sach, Salang). *Users*: 200 in Laos (Bradley 2007a). 50 May, 150 Ruc (Bradley 2007a). Ethnic population: 400 (Bradley 2007b). *Location*: Khammouan province: Boualapha district, near Vietnam border. *Status*: 7 (Shifting). *Class*: Austro-Asiatic, Mon-Khmer, Viet-Muong, Chut. *Dialects*: May, Ruc. *Lg Use*: Shifting to Vietnamese [vie]. *Writing*: Unwritten. *Other*: Seminomadic. Traditional religion. *Map*: 29:43. *Worldwide*: Total users in all countries: 1,250. Also indigenous in: Vietnam.

Con [cno]. *Users*: 1,000 (Wurm and Hattori 1981). *Location*: Bokeo province: Meung district;

Luang Namtha province: southwest of Vieng Pou Kha. *Status*: 6b* (Threatened). *Class*: Austro-Asiatic, Mon-Khmer, Northern Mon-Khmer, Palaungic, Eastern Palaungic, Lametic. *Lg Use*: Also use Lao [lao]. *DLS*: Still. *Writing*: Unwritten. *Map*: 29:14.

French [fra]. Autonym: français. *Users*: 204,000 in Laos (Marcoux et al 2022), L2 users. *Status*: 5* (Dispersed). *Class*: Indo-European, Italic, Romance, Italo-Western, Western, Gallo-Iberian, Gallo-Romance, Gallo-Rhaetian, Oïl, French. *Type*: SVO; prepositions; noun head final for common adjectives, numbers, possessives, but most attributive adjectives come after the noun; gender (masculine/feminine); definite and indefinite articles; verb affixes mark person, number; passives; tense; comparatives; 20 consonant and 14 vowel phonemes; non-tonal; syllable-timed stress. *Lg Dev*: Fully developed. Bible: 1530–2000. *Writing*: Braille script. Duployan shorthand. Latin script, primary usage. *Other*: Non-indigenous. *Worldwide*: Total users in all countries: 309,804,220 (as L1: 80,770,190; as L2: 229,034,030). Global EGIDS level: 0 (International). Indigenous in: Andorra, Belgium, France, Luxembourg, Monaco, Switzerland. Also established in 95 other countries and unestablished in 24 more.

Halang Doan [hld] (Doan, Duan, Halang Duan). *Users*: 2,350 in Laos (2000). *Location*: Attapu province: Sanxai district, Kasseng plateau, Kamane and Dak Robay rivers' left banks near Vietnam border; Xekong province: Dakcheung district. *Status*: 6b* (Threatened). *Class*: Austro-Asiatic, Mon-Khmer, Eastern Mon-Khmer, Bahnaric, North Bahnaric, West, Duan. *Lg Use*: Also use Lao [lao]. *Other*: Traditional religion. *Map*: 29:69. *Worldwide*: Total users in all countries: 4,850. Also indigenous in: Vietnam.

Hani [hni] (Ha Nhi, Hanhi, Haw, Hayi). Autonym: Ha Nhi. *Users*: 740 in Laos (2015 census), decreasing, based on ethnicity. *Location*: Phongsali province: Ou Nua district; Ban Sika Hon, Ban Si Ben Chay, and Ban Kuchu Lin. *Status*: 6b (Threatened). *Class*: Sino-Tibetan, Tibeto-Burman, Ngwi-Burmese, Ngwi, Southern. *Type*: SOV; tonal, 3 tones. *Lg Use*: Some young people, all adults. Also use Lao [lao]. *Lg Dev*: Newspapers. Radio. TV. Videos. Dictionary. Grammar. Texts. *Writing*: Latin script, pinyin-based, used in 1958–1964 and from 1982, experimental, used in education, literature, and media. *Other*: Traditional religion. *Map*: 29:1. *Worldwide*: Total users in all countries: 766,240. Global EGIDS level: 6a (Vigorous). Also indigenous in: China, Vietnam.

Hmong Daw [mww] (Bai Miao, Hmong Der, Hmoob Dawb, White Hmong, White Lum, White Miao, “Meo Kao” pej., “White Meo” pej.). Autonym: Hmongb Dleub. *Users*: 170,000 in Laos (1995 census). *Location*: Bokeo, Bolikhamxai, Houaphan, Khammouan, Louangphabang, Luang Namtha, Oudomxai, Phongsali, Viengchan, Xiangnabouli, Xiengkhoang provinces and Viengchan Capital City. *Status*: 5* (Developing). *Class*: Hmong-Mien, Hmongic, Chuanqiandian. *Dialect*: Hmong Gu Mba (Hmong Qua Mba, Hmoob Quas Npab, Hmoob Txaij Npab, Striped Hmong). *Type*: Tonal, 7 tones. *Lg Use*: Also use Lao [lao]. *Lg Dev*: Radio. Dictionary. Bible: 1997–2011. *Writing*: Lao script. Latin script, used since 1953, primary usage. Miao (Pollard) script, no longer in use, used in China. Pahawh Hmong script, used since 1959. Thai script, used in Thailand. *Other*: Non-indigenous. Co-extensive with Hmong Njua [hnj]. Traditional religion. *Map*: 29:25. *Worldwide*: Total users in all countries:

1,978,400. Indigenous in: China. Also established in: Thailand, United States, Vietnam.
Unestablished in: France.

Hmong Njua [hnj] (Blue Hmong, Ching Miao, Green Hmong, Hmong Leng, Hmong Nzhua, Hmoob Leeg, Lu Miao, Mong Leng, Mong Njua, Mong Ntsua, Qing Miao, Tak Miao, “Blue Meo” *pej.*, “Green Meo” *pej.*, “Meo Dam” *pej.*, “Meo Lai” *pej.*). Autonym: Hmongb Nzhua, Moob Leeg. *Users*: 100,000 in Laos (Hattaway 2003). *Location*: Bokeo, Bolikhamxai, Houaphan, Khammouan, Louangphabang, Luang Namtha, Oudomxai, Phongsali, Viengchan, Xiangnabouli, Xiengkhoang provinces, and Viengchan Capital City. *Status*: 6a* (Vigorous). *Class*: Hmong-Mien, Hmongic, Chuanqiandian. A member of macrolanguage Hmong [hmn] (China). *Dialects*: None known. Speakers in Myanmar understand border speakers in China well. Hmong Daw [mww] and Hmong Njua are largely mutually intelligible, but there are sufficient sociolinguistic, phonological, and lexical differences to require separate literature. *Lg Use*: Also use Lao [lao]. *Lg Dev*: Literature. Dictionary. Grammar. Bible: 2011. *DLS*: Emerging (0.07). *Writing*: Lao script. Latin script, primary usage. Miao (Pollard) script, used in China. Pahawh Hmong script. Thai script, used in Thailand. *Other*: Co-extensive with Hmong Daw [mww]. Traditional religion. *Map*: 29:26. *Worldwide*: Total users in all countries: 468,920. Also indigenous in: China, Thailand, Vietnam. Also established in: Myanmar. Unestablished in: Australia, French Guiana, United States.

Hung [hnu]. *Users*: 3,630 in Laos (2015 census), based on ethnicity. *Location*: Bolikhamxai province: Khamkeut district; northeast of Nape and south of Phong river (Toum dialect). *Status*: 7 (Shifting). *Class*: Austro-Asiatic, Mon-Khmer, Viet-Muong, Cuoi. *Dialects*: Toum (Tum), Phong (Pong, Pong 1, Pong 2, Poong). *Lg Use*: Shifting to Lao [lao]. *DLS*: Still. *Other*: Traditional religion. *Map*: 29:35. *Worldwide*: Total users in all countries: 4,130. Also indigenous in: Vietnam.

Ir [irr] (In, Yir, Yir). *Users*: 4,420 (Asian Minorities Outreach 1999b), based on ethnicity. *Location*: Salavan province: east of Salavan town. *Status*: 6a* (Vigorous). *Class*: Austro-Asiatic, Mon-Khmer, Eastern Mon-Khmer, Katuic, Central Katuic, Ta’oih. *Dialects*: None known. Reportedly most similar to Ong [oog]. *Lg Use*: Also use Lao [lao]. *DLS*: Still. *Other*: Traditional religion. *Map*: 29:57.

Iu Mien [ium] (Ewmien, Highland Yao, Iu Mienh, Man, Mien, Mienh, Myen, Yao, Yao Mienh). Autonym: Iu Mienh. *Users*: 32,400 in Laos (2015 census), based on ethnicity. *Location*: Bokeo province: Houay Xay and Pak Tha districts; Luang Namtha province: Long, Namtha, and Sing districts; Phongsali province: Yot Ou district; Xiangnabouli province: Khop and Xienghone districts. *Status*: 5* (Developing). *Class*: Hmong-Mien, Mienic, Mian-Jin. *Type*: Tonal, 7 tones. *Lg Use*: Some language shift. Also use Lao [lao]. Used as L2 by Kim Mun [mji]. *Lg Dev*: Radio. Dictionary. Grammar. Texts. Bible: 2008. *Writing*: Han (Hanzi, Kanji, Hanja) script, dating from before Yuan dynasty, used in folk domains and text messaging. Lao script, used in Laos. Latin script, used at least since 1930s, used in China, Thailand, United States, France, Canada. Thai script, used in Thailand. *Other*: Almost all Western refugees came from Laos. Daoist, traditional religion. *Map*: 29:9. *Worldwide*: Total users in all

countries: 834,800. Also indigenous in: China, Vietnam. Also established in: Thailand. Unestablished in: Denmark, United States.

Jeh [jeh] (Die, Gie, Yae, Yaeh, Yeh). Autonym: Jeh. *Users*: 11,500 in Laos (2015 census), based on ethnicity. *Location*: Attapu province: Sanxai district; Xekong province: Dakchung district; basin of Dak Main, Kamane, and Poko rivers. *Status*: 5* (Developing). *Class*: Austro-Asiatic, Mon-Khmer, Eastern Mon-Khmer, Bahnaric, North Bahnaric, West, Jeh-Halang. *Dialects*: Jeh Bri La, Jeh Mang Ram. *Lg Use*: Also use Lao [lao]. *Lg Dev*: Literacy rate in L1: 1%–5%. Literacy rate in L2: 15%–25%. Radio. Dictionary. Texts. NT: 2012. *Writing*: Lao script. Latin script. *Other*: Traditional religion. *Map*: 29:68. *Worldwide*: Total users in all countries: 26,700. Also indigenous in: Vietnam.

Kaduo [ktp] (Gazhuo, Kado, Kadu, Khatu). *Users*: 200 in Laos (Schliesinger 2003c). *Location*: Phongsali province: Ou Nua district. *Status*: 6a* (Vigorous). *Class*: Sino-Tibetan, Tibeto-Burman, Ngwi-Burmese, Ngwi, Southern. *Type*: SOV; CV(V); a voiced-voiceless distinction only for fricatives; no tense or nasalized vowels; nouns mostly polysyllabic, other words mostly monosyllabic; many loanwords from Chinese; tonal, 8 tones. *Lg Use*: Also use Lao [lao]. *Lg Dev*: Grammar. *Writing*: Miao (Pollard) script, no longer in use. *Other*: Different from Kadu [zkd], Western Katu [kuf]. Traditional religion. *Map*: 29:2. *Worldwide*: Total users in all countries: 180,200. Also indigenous in: China.

Kang [kyp] (Tai Khang). *Users*: 47,600 in Laos (1995 census). *Location*: Houaphan and Xiengkhoang provinces. *Status*: 6a* (Vigorous). *Class*: Kra-Dai, Kam-Tai, Kam-Sui. *Lg Use*: Also use Lao [lao]. *DLS*: Still. *Writing*: Unwritten. *Map*: 29:32. *Worldwide*: Total users in all countries: 81,700. Also established in: China.

Katang, Northern [ncq] (Kataang, Katang). *Users*: 65,000 (2016). *Location*: Salavan province: centered in Toumlan district; Savannakhet province: Nong and Phin districts. *Status*: 6a (Vigorous). *Class*: Austro-Asiatic, Mon-Khmer, Eastern Mon-Khmer, Katuic, West Katuic, Bru. *Dialect*: Katang Phin. *Lg Use*: Home. Used by all. Also use Lao [lao]. *Lg Dev*: Literacy rate in L2: 25%–50%. NT: 2017. *DLS*: Emerging (0.01). *Writing*: Lao script. Thai script. *Other*: Traditional religion. *Map*: 29:51.

Katang, Southern [sct] (Kataang Rueal, Katang, Katang Rueal). *Users*: 40,000 (2016). *Location*: Salavan province: Salavan and Tumlan districts. *Status*: 6a (Vigorous). *Class*: Austro-Asiatic, Mon-Khmer, Eastern Mon-Khmer, Katuic, West Katuic, Bru. *Lg Use*: Vigorous. Home, community. Used by all. Most also use Lao [lao]. Used as L2 by Upper Ta'oih [tth]. *DLS*: Still. *Writing*: Lao script. *Other*: Traditional religion. *Map*: 29:52.

Katu, Western [kuf]. *Users*: 28,400 (2015 census), based on ethnicity. *Location*: Xekong province: upper Xe Kong river border area. *Status*: 6a (Vigorous). *Class*: Austro-Asiatic, Mon-Khmer, Eastern Mon-Khmer, Katuic, East Katuic, Katu-Pacoh. *Dialects*: Dak Kang, Triw, Kantu. A different language, Eastern Katu [ktv], and orthography from Vietnam. *Lg Use*: Used by all. Also use Lao [lao]. *DLS*: Still. *Writing*: Lao script. *Other*: Traditional religion. *Map*: 29:61.

Khmer [khm]. *Users*: 7,000 in Laos (2015 census), based on ethnicity. *Location*: Champasak province. *Status*: Unestablished. *Class*: Austro-Asiatic, Mon-Khmer, Eastern Mon-Khmer, Khmer. *Lg Dev*: Fully developed. *Bible*: 1954–2016. *Writing*: Khmer script. *Other*: Non-indigenous. *Map*: 29:74. *Worldwide*: Total users in all countries: 17,996,950 (as L1: 16,991,050; as L2: 1,005,900). Global EGIDS level: 1 (National). Indigenous in: Cambodia, Vietnam. Unestablished in: Australia, Canada, France, New Zealand, South Korea, United States.

Khmu [kɲg] (Kamhmu, Kammu, Kamu, Khamu, Khamuk, Khmu', Khomu, Kmhm, Lao Kang, Lao Terng, Mou, Pouteng, Pu Thenh, Tenh, Theng). *Users*: 708,000 in Laos (2015 census), based on ethnicity. *Location*: Scattered in the north. *Status*: 5 (Developing). *Class*: Austro-Asiatic, Mon-Khmer, Northern Mon-Khmer, Khmuic, Mal-Khmu', Khmu'. *Dialects*: Yuan, Khroong (Krong, Kroong), Luang Prabang, Sayabury, Cwaa (Lii, Lyy), Rok, U (Eastern Khmu, Uu), Hat. Dialects are grouped into three: Northern Khmu (Cwaa and Yuan), Western Khmu (Khroong and Rok), and Eastern Khmu (Svantesson and Holmer 2015). *Type*: SVO. *Lg Use*: Vigorous. Used by all. Mixed attitudes. Many also use Lao [lao], especially under the age of 40. Used as L2 by Samtao [stu]. *Lg Dev*: Radio. TV. Dictionary. Grammar. Bible portions: 1918–2006. *DLS*: Emerging (0.07). *Writing*: Duota script, used in a small collection of villages well away from the rest of the language group, also used in China. Lao script. Latin script. *Other*: Traditional religion. *Map*: 29:22. *Worldwide*: Total users in all countries: 825,700. Also indigenous in: China, Thailand, Vietnam. Unestablished in: France, United States.

Khua [xhv]. *Users*: 2,000 in Laos (1981). *Location*: Khammouan province: Bouarapha district, northwest of Boualapha. *Status*: 6b* (Threatened). *Class*: Austro-Asiatic, Mon-Khmer, Eastern Mon-Khmer, Katuic, West Katuic, Bru. *Lg Use*: Also use Lao [lao]. *Other*: Different from Cua [cua]. Traditional religion. *Map*: 29:47. *Worldwide*: Total users in all countries: 3,000. Global EGIDS level: 6a (Vigorous). Also indigenous in: Vietnam.

Khuen [khf] (Khoun, Khween, Kween). *Users*: 8,000 in Laos (1995 L. Chazee). *Location*: Luang Namtha province: Nale, Sing, and Viangphoukha districts. *Status*: 6a* (Vigorous). *Class*: Austro-Asiatic, Mon-Khmer, Northern Mon-Khmer, Khmuic, Mal-Khmu', Khmu'. *Lg Use*: Also use Lao [lao]. *DLS*: Still. *Writing*: Thai script. *Other*: Distinct from Kuan [uan], Khmu Keun [kɲg]. Buddhist. *Map*: 29:8. *Worldwide*: Total users in all countries: 9,000. Also established in: China.

Khün [kkh]. *Users*: 600 in Laos (Schliesinger 2003a). *Location*: Louangphabang province: sacred temple area. *Status*: 6a* (Vigorous). *Class*: Kra-Dai, Kam-Tai, Tai, Southwestern. *Lg Dev*: Dictionary. Texts. Bible portions: 1938. *Writing*: Tai Tham (Lanna) script. *Other*: Non-indigenous. *Worldwide*: Total users in all countries: 120,600. Global EGIDS level: 5 (Developing). Indigenous in: Myanmar. Also established in: Thailand.

Kim Mun [mji] (Jim Mun, Kem di mun, Lan Tin, Lanten, Lowland Yao, Man Lan-Tien, Mun). Autonym: Kem di mun, Kim Mun. *Users*: 4,500 in Laos (1995 L. Chazee). *Location*: Luang Namtha province: Long district, 21 villages. *Status*: 6a* (Vigorous). *Class*: Hmong-Mien, Mienic, Mian-Jin. *Lg Use*: Also use Iu Mien [ium]. Also use Lahu [lhu]. Also use Lao [lao].

Lg Dev: Dictionary. *Writing*: Latin script, used since 1983, experimental, used in China.

Other: Non-indigenous. Daoist. *Worldwide*: Total users in all countries: 374,500. Indigenous in: China. Also established in: Vietnam.

Kiorr [xko] (Col, Con, Saamtaav, Samtao, Samtao II). *Users*: 2,360 (1985 F. Proschan). *Location*: Luang Namtha and Oudomxai provinces: 6 villages. *Status*: 6b* (Threatened). *Class*: Austro-Asiatic, Mon-Khmer, Northern Mon-Khmer, Palaungic, Eastern Palaungic, Angkuic. *Lg Use*: Also use Lao [lao]. *DLS*: Still. *Writing*: Unwritten. *Other*: Buddhist. *Map*: 29:12.

Kriang [ngt] (Griang, Khiang, Kuriang, Ngae, Nge, Nge', Ngeh, Ngeq, Ngkriang, Nhae, Nkriang). *Users*: 16,800 (2015 census), based on ethnicity. 9,030 monolinguals (2005). *Location*: Champasak province: Ba Chiang Chaleun Souk and Pak Song districts; Salavan province: Salavan district; Xekong province: Kaleum and Tha Taeng districts. *Status*: 5 (Developing). *Class*: Austro-Asiatic, Mon-Khmer, Eastern Mon-Khmer, Katuic, East Katuic, Ngeq-Nkriang. *Dialects*: Kriang Koh, Kriang Tha Taeng, Khlor (Klor, Lor). *Type*: SVO; prepositions; noun head initial; word order; isolating language; aspect; non-tonal: contrasts breathy and modal vowel phonation; vowel phonation conditions changes in vowel quality. *Lg Use*: Vigorous. Used by all. Most also use Lao [lao] (Schliesinger 2003b). *Lg Dev*: Literacy rate in L2: 15%–25%. Bible portions: 2019. *DLS*: Emerging (0.01). *Writing*: Lao script. *Other*: Traditional religion, Christian. *Map*: 29:60.

Ksing Mul [puo] (Ksingmul, Lao Muh, Pou Hok, Puhoc, Xin Mul, Xing Mun, Xingmoun, Xinh Mul, Xinh Mun, “Kha Puhoc” *pej.*, “Puoc” *pej.*, “Puok” *pej.*). *Users*: 9,870 in Laos (2015 census), based on ethnicity. *Location*: Houaphan province: Xiangkho district; Xieng Khouang province: Het river, along Vietnam border. *Status*: 6a* (Vigorous). *Class*: Austro-Asiatic, Mon-Khmer, Northern Mon-Khmer, Khmuic, Xinh Mul. *Lg Dev*: Grammar. *Writing*: Unwritten. *Other*: Non-indigenous. Buddhist. *Map*: 29:28. *Worldwide*: Total users in all countries: 39,370. Indigenous in: Vietnam (Puoc).

Kuan [uan] (Guan, Tai Guan, Tai Khouan, Tai Kouane, Tai Kuan, Tai Kwan). *Users*: 890 (2015 census), based on ethnicity. *Location*: Bolikhamxai province: Viangthong district, near Muang river; Khamkeut district, Ban Guan at Ban pakha, Ban Pung, and Ban Bo. *Status*: 6b* (Threatened). *Class*: Kra-Dai, Kam-Tai, Tai. *Dialects*: None known. Not easily classified, possibly due to migration. *Lg Use*: Also use Lao [lao]. Used as L2 by Samtao [stu]. *DLS*: Still. *Other*: Buddhist, traditional religion.

Kuay [kdt] (Aouei, Cuoi, Douon, Dui, Khamen-Boran, Kouy, Kui, Kuoy, Kuy, Old Khmer, Soai, Soay, Soei, Souai, Souei, Suai, Suay, Sui, Suoi, Xuay, Xuoi). *Users*: 46,600 in Laos (2015 census), based on ethnicity. 34,200 monolinguals (2005). *Location*: Champasak, Salavan, and Savannahkhet provinces: both sides of the Mekong river. *Status*: 6b (Threatened). *Class*: Austro-Asiatic, Mon-Khmer, Eastern Mon-Khmer, Katuic, West Katuic, Kuay. *Dialects*: Antra, Na Nhyang. *Lg Use*: Some young people, all adults. Also use Lao [lao]. *Lg Dev*: Literacy rate in L1: 1%–5%. Literacy rate in L2: 37%. Dictionary. Grammar. NT: 1978–2020. *Writing*: Khmer script, used in Cambodia. Lao script, used in Laos. Thai script. *Other*: Traditional religion. *Map*: 29:73. *Worldwide*: Total users in all countries: 456,600. Also

indigenous in: Cambodia, Thailand.

Lahu [lhu] (Muhso, Museu, Musso, Mussur). Autonym: Ladhof. *Users*: 19,200 in Laos (2015 census), increasing, based on ethnicity. *Location*: Bokeo province: Houayxay, Peung, and Tonpheung districts; Luang Namtha province: Long district. *Status*: 6a* (Vigorous). *Class*: Sino-Tibetan, Tibeto-Burman, Ngwi-Burmese, Ngwi, Central. *Dialect*: White Lahu (Lahu Phu). *Type*: SOV; noun head initial; classifiers; dual number; aspect; causatives; 24 consonants and 9 vowels; tonal (7 tones). *Lg Use*: Vigorous. Also use Lao [lao]. Used as L2 by Kim Mun [mji], Phana' [phq]. *Lg Dev*: Literature. Newspapers. Radio. Dictionary. Grammar. Bible: 1989. *Writing*: Latin script. *Other*: Traditional religion, Christian. *Map*: 29:13. *Worldwide*: Total users in all countries: 591,300. Global EGIDS level: 3 (Wider communication). Also indigenous in: China, Myanmar. Also established in: Thailand, Vietnam.

Lahu Si [lhi] (Kui, Kui Lung, Kui Sang, Lad hur Si, Lahu Shi, Yellow Lahu). Autonym: Lad hur Si. *Users*: 3,000 in Laos (2007). *Location*: Bokeo province: Kentung. *Status*: 6a* (Vigorous). *Class*: Sino-Tibetan, Tibeto-Burman, Ngwi-Burmese, Ngwi, Central. *Type*: SOV. *Lg Dev*: Literature. NT: 2015. *Writing*: Latin script. *Other*: Non-indigenous. Traditional religion. *Worldwide*: Total users in all countries: 196,200. Global EGIDS level: 5 (Developing). Indigenous in: China (Lahu Shi), Myanmar (Lahu Shi). Also established in: Thailand. Unestablished in: United States (Lahu Shi).

Lao [lao] (Eastern Thai, Lao Wiang, Lao-Lum, Lao-Noi, Lao-Tai, Laotian, Laotian Tai, Lum Lao, Phou Lao, Rong Kong, Tai Lao). *Users*: 4,230,000 in Laos, all users. L1 users: 3,430,000 in Laos (2015 census), based on ethnicity. L2 users: 800,000. *Location*: Widespread throughout Mekong river valley, south to the Cambodia border. *Status*: 1 (National). Statutory national language (2003, Constitution, Article 89). *Class*: Kra-Dai, Kam-Tai, Tai, Southwestern. *Dialects*: Luang Prabang, Vientiane (Wiang Jan), Savannakhet, Pakse, Lao-Kao, Lao-Khrang. Dialect subgroup with Northeastern Thai [tts] of Thailand. *Type*: SVO; 23 consonants, 20 vowels, 3 diphthongs; tonal (6 tones). *Lg Dev*: Literacy rate in L1: 30%–60%. Literacy rate in L2: 50%–75%. Taught in all primary and secondary schools. Fully developed. Bible: 1932–2012. *DLS*: Vital (0.74). *Writing*: Lao script. *Other*: The Lao Kao migrated to Thailand and are in Nan, Loei, Saraburi, and elsewhere. Buddhist, Christian, traditional religion. *Maps*: 29:21, 29:21. *Worldwide*: Total users in all countries: 4,482,970 (as L1: 3,679,070; as L2: 803,900). Also indigenous in: Cambodia. Also established in: Vietnam. Unestablished in: Argentina, Australia, Canada, New Zealand, Thailand, United States.

Laopang [lbg] (Gu-ba, Laopa, Laopan). *Users*: 9,550 (2000). *Location*: Bokeo province. *Status*: 6a* (Vigorous). *Class*: Sino-Tibetan, Tibeto-Burman, Ngwi-Burmese, Ngwi, Unclassified. *Type*: SOV. *Lg Use*: Also use Lao [lao]. *DLS*: Still.

Laos Sign Language [lso]. *Users*: 36,000 (2021 DBS/DOOR/SIL). Estimated 21,000–42,000 deaf signers, based on 0.3%–0.6% of total population. *Location*: Scattered. *Status*: 6a* (Vigorous). *Class*: Sign language, Deaf community sign language. *DLS*: Still. *Other*: Possibly more than one language.

- Laven** [lbo] (Bolovent, Boriwen, Jaru, Jru, Jru', Jruq, Laweenjru, Loven, Yrou). *Users*: 56,400 (2015 census), based on ethnicity. *Location*: Attapu province; Champasak province: Paksong district; Salavan province; Xekong province: Thataeng district. *Status*: 6a* (Vigorous). *Class*: Austro-Asiatic, Mon-Khmer, Eastern Mon-Khmer, Bahnaric, West Bahnaric, Laven. *Lg Use*: Also use Lao [lao]. *Lg Dev*: Dictionary. Grammar. *DLS*: Still. *Writing*: Unwritten. *Other*: Different from Brao [brb]. Traditional religion. *Map*: 29:65.
- Lavi** [lvi] (Lavy, Lawi, Salwoeng, Saveung, Swoeng, “Lak-wi” pej.). *Users*: Ethnic population: 1,220 (2015 census). *Location*: Xekong province: Lavi Fang Daeng village, south of Xekong town. Two other villages. *Status*: 8a (Moribund). *Class*: Austro-Asiatic, Mon-Khmer, Eastern Mon-Khmer, Bahnaric, West Bahnaric. *Lg Use*: Seriously endangered (Sidwell 2003). Older adults only. Shifted to Lao [lao]. Many also use Alak [alk] (Asian Minorities Outreach 1999b). Many also use Talieng [tdf] (Asian Minorities Outreach 1999b). *DLS*: Still. *Other*: Traditional religion. *Map*: 29:64.
- Lü** [khh] (Lu, Lue, Pai-I, Shui-Pai-I). *Users*: 126,000 in Laos (2015 census), based on ethnicity. *Location*: Bokeo, Louangphabang, Luang Namtha, Oudomxai, Phongsali, and Xiangnabouli provinces. *Status*: 6b* (Threatened). *Class*: Kra-Dai, Kam-Tai, Tai, Southwestern. *Type*: SVO; modifiers follow noun heads. *Lg Use*: Also use Lao [lao]. Used as L2 by Samtao [stu], Sila [slt], Yang [pcc]. *Lg Dev*: Literature. Newspapers. Periodicals. Radio. TV. Dictionary. Texts. NT: 1933. *Writing*: New Tai Lue script, used in Yunnan Province, China. Tai Tham (Lanna) script, still used by some, particularly in Buddhist monasteries in Yunnan Province, China. *Other*: Traditional religion, Buddhist. *Map*: 29:16. *Worldwide*: Total users in all countries: 555,760. Global EGIDS level: 3 (Wider communication). Also indigenous in: China, Myanmar. Also established in: Thailand, Vietnam.
- Mal** [mlf] (Htin, Khatin, Madl, T'in, Thin, Tin). Autonym: Ma'di, Mal. *Users*: 23,200 in Laos (1995 census). *Location*: Xiangnabouli province: Phiang district, west of the Mekong. *Status*: 5* (Developing). *Class*: Austro-Asiatic, Mon-Khmer, Northern Mon-Khmer, Khmuic, Mal-Khmu', Mal-Prai. *Dialects*: None known. Not intelligible with Prai [prt]. *Lg Use*: Also use Lao [lao]. *Lg Dev*: NT: 1994–2015. *DLS*: Still. *Writing*: Latin script. Thai script. *Other*: Traditional religion, Buddhist, Christian. *Map*: 29:17. *Worldwide*: Total users in all countries: 26,700. Also indigenous in: Thailand.
- Maleng** [pkt] (Malang, Malieng). *Users*: 500 in Laos (Bradley 2007a). Ethnic population: Less than 1,000. *Location*: Khammouan province: Nakay district, Nam Theun valley, near Theun river; Bolikhamxai province: Khamkeut district, Lac Sao sub-district, Ban Baga Tan. *Status*: 6b (Threatened). *Class*: Austro-Asiatic, Mon-Khmer, Viet-Muong, Chut. *Dialects*: Maleng, Pakatan (Kha Pakatan), Malang, Hareme. *Type*: Tonal (4 tones). *Lg Use*: Some young people, all adults. All also use Lao [lao] (Schliesinger 2003b). *DLS*: Still. *Other*: Traditional religion. *Map*: 29:42. *Worldwide*: Total users in all countries: 1,700. Also indigenous in: Vietnam.
- Mlabri** [mra] (Ma Ku, Mabri, Mla, Mla-Bri, Mrabri, Yellow Leaf, Yumbri). *Users*: 40 in Laos (Schliesinger 2003b). Ethnic population: 67 (Schliesinger 2003d). *Location*: Xiangnabouli province: Phiang district, near Thailand border. *Status*: 8a (Moribund). *Class*: Austro-Asiatic,

Mon-Khmer, Northern Mon-Khmer, Khmuic, Mlabri. *Lg Use*: Shifted to Lao [lao]. *Writing*: Thai script. *Other*: Nomadic. Different from Kha Tong Luang (Phi Tong Luang, Yellow Leaf), which are Western Viet-Muong (Wurm and Hattori 1981). Traditional religion. *Map*: 29:20. *Worldwide*: Total users in all countries: 440. Global EGIDS level: 6a (Vigorous). Also indigenous in: Thailand.

Myen [mya] (Man). *Users*: 2,840 in Laos (2015 census). *Location*: Bokeo province: Houayxay district; Luang Namtha province: Sing and Long districts; Xiengnabouli province: Xiengnabouli district; Viengchan Capital City. *Status*: Unestablished. *Class*: Sino-Tibetan, Tibeto-Burman, Ngwi-Burmese, Burmish, Southern. *Type*: SOV; noun head final; tense and aspect; 31 consonants, 8 vowels, 4 diphthongs; tonal (3 tones). *Lg Dev*: Fully developed. *Bible*: 1835–2014. *Writing*: Braille script. Myanmar (Burmese) script, primary usage. *Other*: Non-indigenous. Buddhist. *Worldwide*: Total users in all countries: 43,025,110 (as L1: 33,023,270; as L2: 10,001,840). Global EGIDS level: 1 (National). Indigenous in: Myanmar (Burmese). Unestablished in: Australia (Burmese), Canada (Burmese), Denmark (Burmese), Germany (Burmese), Malaysia (Burmese), New Zealand (Burmese), Norway (Burmese), South Korea (Burmese), Thailand (Burmese), United States (Burmese).

Ngoaun [nuo] (Nguan, Nguane, Nguôn). *Users*: 760 in Laos (2010 N. Cheeseman). *Location*: Khammouan province: Nakai district. *Status*: 6a* (Vigorous). *Class*: Austro-Asiatic, Mon-Khmer, Viet-Muong, Muong. *Lg Use*: Also use Lao [lao]. *Writing*: Unwritten. *Other*: Traditional religion. *Map*: 29:44. *Worldwide*: Total users in all countries: 1,760. Also indigenous in: Vietnam (Nguôn).

Nung [nut] (Nong). Autonym: Nohng. *Users*: A few in Laos. *Location*: Louangphabang province: Xiengngeun district. *Status*: 5* (Developing). *Class*: Kra-Dai, Kam-Tai, Tai, Central. *Lg Dev*: Radio. Dictionary. Grammar. NT: 2019. *Writing*: Latin script. *Other*: Non-indigenous. Different from Chinese Nung [yue] (Cantonese in Vietnam). *Worldwide*: Total users in all countries: 1,080,000. Indigenous in: Vietnam.

Nyaheun [nev] (Hin, Hoen, Hun, Nha Heun, Nia Hoen, Niahon, Nyah Heuny, Nyahön, Yaheun). *Users*: 9,000 (2015 census), based on ethnicity. *Location*: Champasak province: Paksong district; Xekong and Attapu provinces. *Status*: 6a (Vigorous). *Class*: Austro-Asiatic, Mon-Khmer, Eastern Mon-Khmer, Bahnaric, West Bahnaric, Nyaheun. *Lg Use*: Used by all. All also use Lao [lao] (Schliesinger 2003b). *Lg Dev*: Literacy rate in L2: 15%–25%. *DLS*: Still. *Writing*: Unwritten. *Other*: Traditional religion. *Map*: 29:66.

O'du [tyh] ('Iduh, O Du, Oedou, "Haat" pej., "Hat" pej., "Tay Hat" pej.). *Users*: 600 in Laos (2015 census), decreasing, based on ethnicity. *Location*: Xiengkhoang province: Khouone district, 2 villages. *Status*: 7 (Shifting). *Class*: Austro-Asiatic, Mon-Khmer, Northern Mon-Khmer, Khmuic, Mal-Khmu', Khmu'. *Lg Use*: Adults only. Shifting to Tai Daeng [tyr] (Schliesinger 2003b). *Other*: Traditional religion. *Map*: 29:33. *Worldwide*: Total users in all countries: 1,030. Also indigenous in: Vietnam.

Ong [oog] (Hantong, Tong). *Users*: 10,300 (2000). *Location*: Champasak province; Salavan

province: north of Salavan town. *Status*: 7 (Shifting). *Class*: Austro-Asiatic, Mon-Khmer, Eastern Mon-Khmer, Katuic, Central Katuic, Ta'oih. *Dialects*: None known. Reportedly most similar to Ir [irr]. *Lg Use*: Shifting to Lao [lao]. *DLS*: Still. *Writing*: Unwritten. *Other*: Traditional religion. *Map*: 29:56.

Oy [oyb] (Huei, Oey, Oi, Oi-Sok, Thae, The). *Users*: 32,200 (2015 census), based on ethnicity. 23,500 Oy and 8,690 Jeng (2015 census). 8,960 monolinguals (2007). *Location*: Attapu province: foot of Bolaven plateau, and near Pakse; Xekong province: Thateng district. Attapu province: Samakxixai and Sanamxai districts, 7 villages north of Attopeu town; Xekong province: Dakcheung and Lamam districts (Jeng dialect); Attapu, Champasak, and Xekong provinces (Sok dialect). *Status*: 6a (Vigorous). *Class*: Austro-Asiatic, Mon-Khmer, Eastern Mon-Khmer, Bahnaric, West Bahnaric, Oi-The. *Dialects*: Riyao, Tamal Euy, Inn Tea, Kranyeu, Khen Sang, Kongsang, La-Nyao, The, Jeng (Cheng, Chiengceng), Sok (Sawk, Sork). Related to Sapuan [spu]. *Lg Use*: Used by all. Also use Lao [lao]. *DLS*: Still. *Writing*: Unwritten. *Other*: Traditional religion. *Map*: 29:59.

Pacoh [pac] (Bo River Van Kieu, Cang Pacóuh, Ganai, Pa Co, Paco, Pako, Poko, Pokoh). Autonym: Cang Pacóuh. *Users*: 22,600 in Laos (2015 census), based on ethnicity. 11,600 monolinguals (2005). *Location*: Salavan province: Samouay district; Savannakhet province; Xekong province: Kaleum district. *Status*: 6a (Vigorous). *Class*: Austro-Asiatic, Mon-Khmer, Eastern Mon-Khmer, Katuic, East Katuic, Katu-Pacoh. *Dialects*: Pahi, Kado (Cado, Cadô). *Lg Use*: Used by all. Also use Lao [lao]. Used as L2 by Upper Ta'oih [tth]. *Lg Dev*: Literacy rate in L2: 15%–25%. Dictionary. Grammar. Texts. NT: 2018. *Writing*: Lao script, in development for Ka'do. Latin script. *Other*: Traditional religion. *Map*: 29:54. *Worldwide*: Total users in all countries: 38,600. Also indigenous in: Vietnam.

Phana' [phq] (Bana', Pana'). *Users*: 380 (Schliesinger 2003c). Ethnic population: Included within the Ahka [ahk] ethnic group. *Location*: Bokeo province: Houayxay district, 1 village; Luang Namtha province: Luang Namtha district, Bopiet and Namtoun villages; Phongsali province: east of Moung Ou Tail. *Status*: 6b* (Threatened). *Class*: Sino-Tibetan, Tibeto-Burman, Ngwi-Burmese, Ngwi, Southern. *Dialects*: None known. Very similar to Sila [slt] (Bradley 2007a). *Lg Use*: Being replaced by Lahu [lhu] in Houayxay District, by Akha [ahk] in Namtha Province (Bradley 2007a). Also use Akha [ahk]. Also use Lahu [lhu]. *DLS*: Still. *Other*: A larger population may be in China under Han nationality. *Map*: 29:4.

Phong-Kniang [pnx] (Keneng, Kenieng, Lao Phong, Pong, “Kha Niang” *pej.*, “Khaniang” *pej.*). *Users*: 30,700 (2015 census), based on ethnicity. *Location*: Houaphan province: Houameuang and Xam Neua districts, near the Neun and Peun rivers. *Status*: 6a* (Vigorous). *Class*: Austro-Asiatic, Mon-Khmer, Northern Mon-Khmer, Khmuic, Xinh Mul. *Lg Use*: Also use Lao [lao]. *Lg Dev*: Many are educated. *DLS*: Still. *Writing*: Unwritten. *Other*: A Phong exonym of Kniang and not to be confused with Kha Phong, a dialect of Maleng [pkt], nor with the autonym Pong as a dialect of Hung [hnu] (Ferlus 1996). Traditional religion. *Map*: 29:27.

Phu Thai [pht] (Phutai, Putai, Puthay). *Users*: 218,000 in Laos (2015 census), based on ethnicity. *Location*: Bolikhamxai, Khammouan, and Savannakhet provinces; Salavan province:

centered in Toumlan district; Champasak and Xiengkhoang provinces. *Status*: 6a* (Vigorous). *Class*: Kra-Dai, Kam-Tai, Tai, Southwestern. *Lg Use*: Also use Lao [lao]. *Writing*: Thai script. *Other*: Traditional religion. *Map*: 29:49. *Worldwide*: Total users in all countries: 897,000. Also indigenous in: Thailand, Vietnam.

Phuan [phu] (Lao Phuan, Phu Un). *Users*: 115,000 in Laos (Schliesinger 2003a), based on ethnicity. *Location*: Bolikhamxai, Houaphan, Louangphabang, Luang Namtha, and Viengchan provinces; Viengchan Capital City; Xiengkhoang province: Kham, Pek, and Phou Kout districts. *Status*: 6a* (Vigorous). *Class*: Kra-Dai, Kam-Tai, Tai, Southwestern. *Lg Use*: Also use Lao [lao]. *Lg Dev*: Dictionary. *Writing*: Unwritten. *Other*: Name also used for Lao in Thailand. Buddhist. *Map*: 29:24. *Worldwide*: Total users in all countries: 316,000. Also indigenous in: Thailand. Also established in: Cambodia (Lao Phuon).

Phunoi [pho] (Phounoy, Phu Noi, Punoï, Singsily, Sinsali). *Users*: 39,200 (2015 census), based on ethnicity. *Location*: Phongsali province. *Status*: 6a* (Vigorous). *Class*: Sino-Tibetan, Tibeto-Burman, Ngwi-Burmese, Ngwi, Southern, Bisoid. *Dialects*: Black Khoany, White Khoany, Mung, Hwethom, Khaskhong. Reportedly similar to Bisu [bzi], Pyen [pyy], and Mpi [mpz]. Listed dialects may be separate languages. *Lg Use*: Vigorous. Also use Lao [lao]. *DLS*: Still. *Writing*: Lao script. *Other*: Traditional religion, Buddhist. *Map*: 29:5.

Prai [prt] (Lao Mai, Lao Prai, Lua Prai, Phai, “Htin” *pej.*). *Users*: 28,700 in Laos (2015 census), based on ethnicity. *Location*: Xiangnabouli province: Hongsa, Nguen, Phiang, Xiang Hon, and Xaignabouli districts. *Status*: 6a* (Vigorous). *Class*: Austro-Asiatic, Mon-Khmer, Northern Mon-Khmer, Khmuic, Mal-Khmu’, Mal-Prai. *Lg Use*: Vigorous. Also use Lao [lao]. *Lg Dev*: NT: 2019. *Writing*: Thai script. *Other*: Distinct from Mal [mlf]. There are 9 Lao Prai villages in Hongsa district in Xaignabouli province where the Prai spoken is similar to the Prai spoken in Thailand. More specifically, it is very similar to the ‘Y’ variety of Prai spoken in Thailand. Traditional religion. *Map*: 29:18. *Worldwide*: Total users in all countries: 48,700. Global EGIDS level: 5 (Developing). Also indigenous in: Thailand.

Rmeet [lbn] (Kha Lamet, Khamed, Khamet, Lamed, Lamet, Lemet). Autonym: Rmeet. *Users*: 22,400 (2015 census), based on ethnicity. *Location*: Bokeo, Luang Namtha, and Oudomxai provinces. *Status*: 6a* (Vigorous). *Class*: Austro-Asiatic, Mon-Khmer, Northern Mon-Khmer, Palaungic, Eastern Palaungic, Lametic. *Dialects*: Upper Lamet, Lower Lamet. *Lg Use*: Also use Lao [lao]. *Lg Dev*: Literacy rate in L2: 25%–50%. *DLS*: Still. *Writing*: Lao script. Latin script. *Other*: Traditional religion. *Map*: 29:15.

Saek [skb] (Seak, Sek, Set, Tai Sek, Xaek, Xec, Xek). *Users*: 3,840 in Laos (2015 census), based on ethnicity. *Location*: Bolikhamxai province: Khamkeut district, Nam Ve subdistrict, Na Kadok village; Khammouan province: Grommarol, Thakhek, Hinboun, Mahaxai, and Nakai districts. *Status*: 6b* (Threatened). *Class*: Kra-Dai, Kam-Tai, Tai, Northern. *Dialects*: Na Kadok, Khammouan. Reportedly similar to Tai Yo [tyj]. *Lg Use*: Most also use Lao [lao] (Asian Minorities Outreach 1999b). Used as L2 by Arem [aem]. *Lg Dev*: Dictionary. *DLS*: Still. *Writing*: Unwritten. *Other*: The Saek of Na Kadok claim to have come from Phu Quan, Ban Pho Quang, Duc Tho district, in what is now Ha Tinh province, Vietnam. Khammouan

dialect speakers are originally from Nakai district, and it is still spoken in Toeng, Nam Meo, Na Moe, and Beuk. Traditional religion, Buddhist. *Map*: 29:40. *Worldwide*: Total users in all countries: 7,340. Also indigenous in: Thailand.

Salang [hal] (Halang). *Users*: 4,000 in Laos (Asian Minorities Outreach 1999b). *Location*: Attapu province. *Status*: 6b* (Threatened). *Class*: Austro-Asiatic, Mon-Khmer, Eastern Mon-Khmer, Bahnaric, North Bahnaric, West, Jeh-Halang. *Lg Use*: Also use Lao [lao]. *Lg Dev*: Literacy rate in L1: 5%–10%. Literacy rate in L2: 25%–50%. Radio. Dictionary. Bible portions: 1970–1972. *Writing*: Latin script. *Other*: Traditional religion. *Map*: 29:70. *Worldwide*: Total users in all countries: 17,500. Also indigenous in: Vietnam (Halang).

Samtao [stu] (Samtau, Samtuan). *Users*: 3,420 in Laos (2015 census), based on ethnicity. *Location*: Bokeo province: Houay Xai district; Luang Namtha province: Ban Tha Oo. *Status*: 6b* (Threatened). *Class*: Austro-Asiatic, Mon-Khmer, Northern Mon-Khmer, Palaungic, Eastern Palaungic, Angkuic. *Lg Use*: Children in Luang Namtha province are not using the language (Schliesinger 2003b). Some also use Khmu [kjm] (Asian Minorities Outreach 1999b). Some also use Kuan [uan] (Asian Minorities Outreach 1999b). Some also use Lao [lao] (Asian Minorities Outreach 1999b). Some also use Lü [khh] (Asian Minorities Outreach 1999b). Used as L2 by Tai Loi [tlq]. *Writing*: Unwritten. *Other*: Non-indigenous. Buddhist, traditional religion. *Worldwide*: Total users in all countries: 13,170. Global EGIDS level: 6a (Vigorous). Indigenous in: Myanmar. Also established in: China. Unestablished in: Thailand.

Sapuan [spu] (Sapouan). *Users*: 1,000 (Sidwell 2003). *Location*: Champasak and Xekong provinces: Se Kamane and Se Kong rivers' banks. *Status*: 6a (Vigorous). *Class*: Austro-Asiatic, Mon-Khmer, Eastern Mon-Khmer, Bahnaric, West Bahnaric, Oi-The. *Lg Use*: Used by all. Also use Lao [lao]. *DLS*: Still. *Writing*: Unwritten. *Other*: Traditional religion. *Map*: 29:63.

Sedang [sed] (Dadang). Autonym: rotéang. *Users*: 900 in Laos (2015 census), based on ethnicity. *Location*: Attapu province: Phouvong district. *Status*: 6a* (Vigorous). *Class*: Austro-Asiatic, Mon-Khmer, Eastern Mon-Khmer, Bahnaric, North Bahnaric, West, Sedang-Todrah, Sedang. *Lg Dev*: Radio. Dictionary. *Writing*: Latin script. *Other*: Non-indigenous. Traditional religion. *Worldwide*: Total users in all countries: 212,900. Indigenous in: Vietnam.

Sila [slt] (Asong, Sida, “Kha Pai” *pej.*). *Users*: 3,150 in Laos (2015 census), based on ethnicity. *Location*: Luang Namtha province; Oudomxai province: Namo district; Phongsali province: Boun Neua, Ngot Ou, and Samphan districts. *Status*: 6a (Vigorous). *Class*: Sino-Tibetan, Tibeto-Burman, Ngwi-Burmese, Ngwi, Southern. *Lg Use*: Home. Used by all. Neutral attitudes. Most also use Lao [lao] (Badenoch and Hayashi 2017). Most also use Lü [khh] (Badenoch and Hayashi 2017). *DLS*: Still. *Other*: Traditional religion. *Map*: 29:6. *Worldwide*: Total users in all countries: 4,060. Also indigenous in: Vietnam.

So [sss] (Bru, Makong, Mang Cong, Mang-Koong, Mangkong, Mankoong, So Makon, Sô, Thro, “Kha So” *pej.*). *Users*: 163,000 in Laos (2015 census), based on ethnicity, includes Western Bru [brv]. *Location*: Bolikhamxai, Khammouan, Savannakhet provinces. *Status*: 6a

(Vigorous). *Class*: Austro-Asiatic, Mon-Khmer, Eastern Mon-Khmer, Katuic, West Katuic, Bru. *Dialects*: So Trong, So Slouy, So Phong. Reportedly similar to Bru [bru]. *Lg Use*: Used by all. Also use Lao [lao]. *Lg Dev*: Literacy rate in L2: 15%–25%. Dictionary. Grammar. Bible portions: 1980–2004. *DLS*: Still. *Writing*: Lao script, used in Laos. Thai script, used in Thailand. *Other*: Traditional religion. *Map*: 29:46. *Worldwide*: Total users in all countries: 233,000. Also indigenous in: Thailand.

Sou [sqj] (Sawk, Souk, Su, Su', Suq). *Users*: 2,500 (Schliesinger 2003b). *Location*: Attapu province: Phouvong and Sanamxai districts. *Status*: 6b* (Threatened). *Class*: Austro-Asiatic, Mon-Khmer, Eastern Mon-Khmer, Bahnaric, West Bahnaric, Brao-Kravet. *Lg Use*: Also use Lao [lao]. *DLS*: Still. *Writing*: Unwritten. *Other*: Traditional religion. *Map*: 29:72.

Tai Daeng [tyr] (Daeng, Man Thanh, Red Thai, Tai Deng, Tai Nhai, Thai Dang, Thai Do). *Users*: 25,000 in Laos (Asian Minorities Outreach 1999b). *Location*: Bolikhamxai province: Khamkeut district, Lac Sao sub-district; Luang Namtha province: Luong district; Viengchan province: Kasi district; Houaphan, Louangphabang, Oudomxai, Phongsali, and Xiengkhoang provinces. *Status*: 6b* (Threatened). *Class*: Kra-Dai, Kam-Tai, Tai, Southwestern. *Dialect*: Tai Meuy (Mueay, Tai Meuy, Tai Mueai, Tai Muei). *Type*: Tonal (5 tones). *Lg Use*: Also use Lao [lao]. Used as L2 by O'du [tyh]. *Writing*: Tai Viet script. *Other*: Part of the official Thai ethnic community in Vietnam. Traditional religion, Buddhist. *Map*: 29:31. *Worldwide*: Total users in all countries: 105,000. Global EGIDS level: 6a (Vigorous). Also indigenous in: Vietnam.

Tai Dam [blt] (Black Tai, Tai Noir, Thai Den, 'Táy Đăm). Autonym: 'Táy, 'Táy Đăm. *Users*: 65,000 in Laos (Schliesinger 2003a). *Location*: Bokeo, Bolikhamxai, Houaphan, Louangphabang, Luang Namtha, Oudomxai, Phongsali, Viengchan, Xiangnabouli, and Xiengkhoang provinces. *Status*: 5* (Developing). *Class*: Kra-Dai, Kam-Tai, Tai, Southwestern. *Lg Use*: Also use Lao [lao]. Used as L2 by Tai Dón [twh]. *Lg Dev*: Radio. Dictionary. NT: 2013–2014. *Writing*: Lao script. Latin script. Tai Viet script. *Other*: Traditional religion. *Map*: 29:23. *Worldwide*: Total users in all countries: 777,700. Also indigenous in: China, Vietnam. Also established in: Thailand. Unestablished in: United States.

Tai Dón [twh] (Tai Blanc, Tai Kao, Tai Khao, Tai Lai, Thái Trắng, Tầy Đón, White Tai). Autonym: Tầy Đón. *Users*: 33,000 in Laos (Schliesinger 2003a). *Location*: Houaphan, Louangphabang, Luang Namtha, Oudomxai, and Phongsali provinces. *Status*: 6a* (Vigorous). *Class*: Kra-Dai, Kam-Tai, Tai, Southwestern. *Lg Use*: A large influential group. Also use Tai Dam [blt]. *Lg Dev*: Dictionary. Bible portions: 1969–1992. *Writing*: Latin script. Tai Viet script. *Other*: Traditional religion. *Map*: 29:30. *Worldwide*: Total users in all countries: 328,000. Also indigenous in: China, Vietnam.

Tai Khang [tnu] (Tai Kang, Tay Chieng, Tay Khang). *Users*: 200. Ethnic population: 1,500 (Schliesinger 2003a). *Location*: Bolikhamxai province: Khamkeut district, Ban Phon Than and Ban Ban Sopkat sub-districts; Nam Hai and Viengthong districts. *Status*: 6b (Threatened). *Class*: Kra-Dai, Kam-Tai, Tai. *Lg Use*: Some young people, all adults. Many also use Lao [lao]. *DLS*: Still. *Other*: Some problem in classification and confusion with Kháng [kjm] of Vietnam. Buddhist, traditional religion. *Map*: 29:34.

Tai Loi [tlq] (Doi, Lao Doi, Loi, Monglwe, Tai Doi, Tailoi, Wakut, “Kha Doy” *pej.*). *Users*: Ethnic population: 600 (Schliesinger 2003b). *Location*: Luang Namtha province: Sing district. *Status*: 8b (Nearly extinct). *Class*: Austro-Asiatic, Mon-Khmer, Northern Mon-Khmer, Palaungic, Eastern Palaungic, Angkuic. *Dialects*: Tai Loi, Doi. *Type*: SVO. *Lg Use*: The Doi [tlq] have almost given up their original language and communicate even among themselves in Lao [lao] dialect (Schliesinger 2003b). Elderly only. Shifted to Lao [lao]. A few also use Samtao [stu] (Schliesinger 2003b). *Writing*: Latin script. *Other*: Traditional religion, Buddhist. *Map*: 29:11. *Worldwide*: Global EGIDS level: 6a (Vigorous). Also indigenous in: Myanmar.

Tai Long [thi]. *Users*: 4,800 (2004). *Location*: Louangphabang province. *Status*: 6a* (Vigorous). *Class*: Kra-Dai, Kam-Tai, Tai, Southwestern. *Lg Use*: Also use Lao [lao]. *DLS*: Still.

Tai Nüa [tdd] (Chinese Shan, Tai Neua, Tai Nuea, Thaineau). *Users*: 14,100 in Laos (2015 census), based on ethnicity. *Location*: Bolikhamxai, Houaphan, Viengchan, Xiengkhoang, and Xaisomboun provinces. *Status*: 6b* (Threatened). *Class*: Kra-Dai, Kam-Tai, Tai, Southwestern. *Type*: SVO; modifiers follow heads. *Lg Dev*: Literature. Dictionary. Bible portions: 1931–1948. *Writing*: Tai Le script, used in the Dehong Dai and Jingpho Autonomous Prefecture, Yunnan Province, China. *Other*: Non-indigenous. It is possible 2 different Southwestern Tai groups called Tai Nüa exist. One group originated in Lincang prefecture in China, and another group had their homeland in Houaphan province in Laos (Bradley 2007a, Schliesinger 2003a). Traditional religion. *Map*: 29:29. *Worldwide*: Total users in all countries: 726,100. Global EGIDS level: 5 (Developing). Indigenous in: China, Myanmar. Also established in: Vietnam.

Tai Pao [tpo]. *Users*: 2,500 in Laos (Schliesinger 2003a). *Location*: Bolikhamxai province: Khamkeut, Pakkading, and Viangthong districts. *Status*: 6b* (Threatened). *Class*: Kra-Dai, Kam-Tai, Tai. *Type*: Tonal (5 tones). *Lg Use*: Also use Lao [lao]. *DLS*: Still. *Other*: Classification unclear, possibly due to migration. Traditional religion, Buddhist. *Map*: 29:36. *Worldwide*: Total users in all countries: 12,500. Global EGIDS level: 6a (Vigorous). Also indigenous in: Vietnam.

Tai Yo [tyj] (Tai Do, Tai Maen, Tai Man, Tai Men, Tai Mene, Tai Mène, Tai Mènè, Tai-Maen). *Users*: 7,200 in Laos (1995 census). *Location*: Bolikhamxai province: Khamkeut district, Lak Xao, Ka’ane, Khamkeut, Na Heuang, Nam Sak, Phon Thoen, Sop Chat, Sop Pone, and Tha Veng; Vieng Thong district. *Status*: 6a* (Vigorous). *Class*: Kra-Dai, Kam-Tai, Tai. *Dialects*: None known. Reportedly similar to Saek [skb]. *Lg Use*: Also use Lao [lao]. *Writing*: Latin script. Tai Yo script, limited usage. *Other*: They claim to have come from Xieng Lip and Ban Pot in Nghe An, Vietnam. *Map*: 29:37. *Worldwide*: Total users in all countries: 7,500. Also indigenous in: Vietnam.

Talieng [tdf] (Caliang, Calieng, Kaseng, Kasseng, Khon Dak Chueng, Koseng, Kraseng, Taliang, Tariang, Tarieng, Triang, Trieng). *Users*: 38,400 (2015 census), based on ethnicity. *Location*: Savannakhet province: Phine district; Xekong province: Dak Cheung district near Vietnam border, Boloven plateau area; into Attapu province. *Status*: 6a (Vigorous). *Class*: Austro-Asiatic, Mon-Khmer, Eastern Mon-Khmer, Bahnaric, North Bahnaric, West. *Dialects*: None

known. May be the same language as Trieng [stg]. *Lg Use*: Used by all. Also use Alak [alk]. Also use Lao [lao]. Used as L2 by Lavi [lvi]. *DLS*: Still. *Writing*: Unwritten. *Other*: Apparently different from Tareng [tgr], which is East Katuic. ‘Tariang’, headhunters. Traditional religion. *Map*: 29:67.

Ta’oih, Lower [tto] (Tong). *Users*: 15,800 (2000), increasing. *Location*: Salavan province: northwest of Saravan town; Xekong province: Kaleum district. *Status*: 6a (Vigorous). *Class*: Austro-Asiatic, Mon-Khmer, Eastern Mon-Khmer, Katuic, Central Katuic, Ta’oih. *Dialects*: Tong, Hantong’. Not intelligible of Upper Ta’oih [tth]. *Lg Use*: Vigorous. Used by all, in some villages. Positive attitudes. A few also use Lao [lao]. Also use Upper Ta’oih [tth]. *DLS*: Still. *Writing*: Lao script. *Map*: 29:55.

Ta’oih, Upper [tth] (Katang, Ta Hoi, Ta’oiq, Ta-Oi, Ta-Oy, Ta-oiq, Tau Oi). *Users*: 30,900 in Laos (1995 census), increasing. 21,600 monolinguals (1995). *Location*: Salavan province: Ta-Oy district; Savannahkhet and Xekong provinces. *Status*: 6a (Vigorous). *Class*: Austro-Asiatic, Mon-Khmer, Eastern Mon-Khmer, Katuic, Central Katuic, Ta’oih. *Dialects*: Pasoom, Kamuan’, Palee’n, Leem, Ha’aang (Sa’ang), Katang Ta’oiq. Not inherently intelligible of Lower Ta’oih [tto]. Intelligibility can be acquired after at least 2 weeks’ contact. *Lg Use*: Vigorous. Used by all, in some villages. Positive attitudes. Some also use Lao [lao]. Also use Eastern Bru [bru]. Also use Pacoh [pac]. Also use Southern Katang [sct]. Used as L2 by Lower Ta’oih [tto]. *DLS*: Still. *Writing*: Lao script. *Other*: Traditional religion. *Map*: 29:53. *Worldwide*: Total users in all countries: 49,900. Also indigenous in: Vietnam.

Tareng [tgr] (Tariang). *Users*: 5,000 (Wurm and Hattori 1981). *Location*: Xekong province: west of Vietnam border, east of Kayong, north of Chavane and Thia. *Status*: 6a* (Vigorous). *Class*: Austro-Asiatic, Mon-Khmer, Eastern Mon-Khmer, Katuic, East Katuic, Katu-Pacoh. *Lg Use*: Also use Lao [lao]. *DLS*: Still. *Other*: Distinct from Talieng [tdf], which is North Bahnaric. *Map*: 29:62.

Thai, Northern [nod] (Kam Mueang, Lan Na, Lanatai, Lanna, Lannatai, Muang, Mueang, Myang, “Youanne” *pej.*, “Youon” *pej.*, “Yuan” *pej.*). *Users*: 29,500 in Laos (2005 census). *Location*: Oudomxai and Xiangnabouli provinces. *Status*: 6a* (Vigorous). *Class*: Kra-Dai, Kam-Tai, Tai, Southwestern. *Dialect*: Nan. *Type*: 20 consonants, 21 vowels. *Lg Use*: Also use Lao [lao]. *Lg Dev*: Newspapers. Dictionary. NT: 1914–2017. *Writing*: Tai Tham (Lanna) script, limited usage. Thai script. *Other*: Buddhist, traditional religion. *Map*: 29:19. *Worldwide*: Total users in all countries: 6,029,500. Global EGIDS level: 3 (Wider communication). Also indigenous in: Thailand.

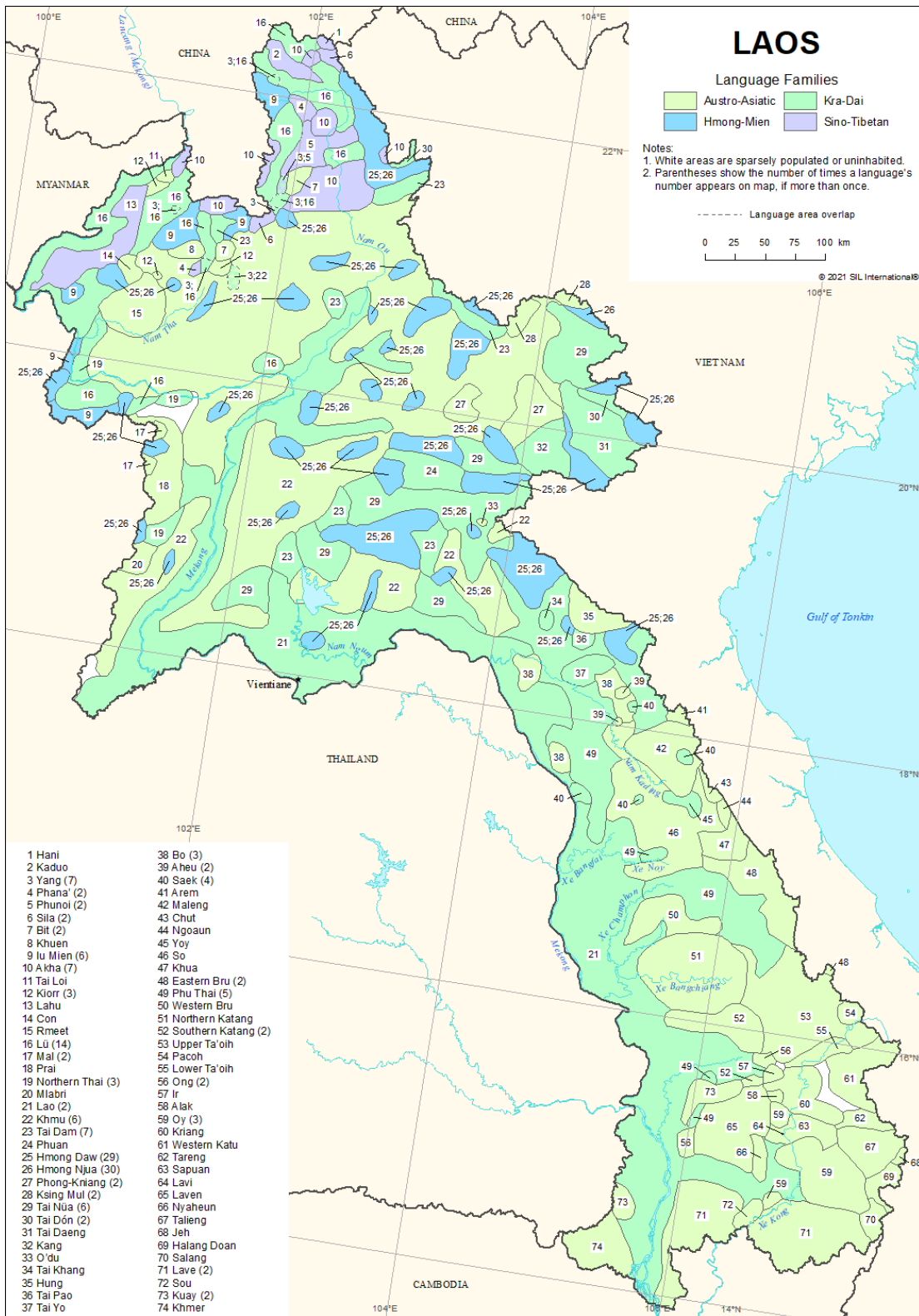
Vietnamese [vie]. Autonym: Tiếng Việt. *Users*: 18,900 in Laos (2015 census), based on ethnicity. *Status*: Unestablished. *Class*: Austro-Asiatic, Mon-Khmer, Viet-Muong, Vietnamese. *Type*: SVO; prepositions; noun head initial; classifiers and numerals precede noun heads; possessor noun phrases and adjectives follow noun heads; noun classifiers; no articles; passives; comparatives; 25 consonants, 11 vowels, 20 diphthongs, 4 triphthongs; tonal (6 tones); inclusive/exclusive pronouns. *Lg Use*: Used as L2 by Arem [aem], Chut [scb]. *Lg Dev*: Fully developed. Bible: 1916–2008. *Writing*: Braille script. Han (Hanzi, Kanji, Hanja) script. Latin

script, primary usage. *Other*: Non-indigenous. *Worldwide*: Total users in all countries: 85,807,700 (as L1: 85,023,700; as L2: 784,000). Global EGIDS level: 1 (National). Indigenous in: China, Vietnam. Also established in: Cambodia, Thailand, United States. Unestablished in: Australia, Austria, Bulgaria, Canada, China–Taiwan, Czechia, Denmark, Finland, France, Germany, Hungary, Japan, Malaysia, Martinique, Netherlands, New Caledonia, New Zealand, Norway, Poland, Russian Federation, South Korea, Spain, Sweden, United Kingdom, Vanuatu.

Yang [pcc] (Nhang, Nyang). *Users*: 5,840 in Laos (2015 census), based on ethnicity. *Location*: Luang Namtha province: Vieng Poukha district, Nam Fa; Nale district, Nam Huay; Oudomxai province: Beng district, Khone; Namo district, Ay, Sonsavath, Ponxay Savan Namo Neua; Xay district, Long Ya; Phongsali province: Khua district, Mone Savanh, Hat Xeui; Gnot Ou district, Xum Kham, Tha; Boun Tai district, Na Mak, Na Tene, Vieng Xai, Long Nam, Long Nay Khao; Boun Neua district, Muong Xou. *Status*: 6a* (Vigorous). *Class*: Kra-Dai, Kam-Tai, Tai, Northern. *Type*: SVO; modifiers follow heads; highly monosyllabic; tonal, 6 tone categories in open syllables and 4 in closed syllables. *Lg Use*: Also use Lü [khh] (Chazée 1999). *Lg Dev*: Literature. Videos. Dictionary. Grammar. Texts. Bible portions: 1904. *Writing*: Han (Hanzi, Kanji, Hanja) script, dating from late Ming/early Qing dynasty, limited use in ritual texts and folk literature. Latin script, official usage since 1985. *Other*: Non-indigenous. Buddhist, traditional religion. *Map*: 29:3. *Worldwide*: Total users in all countries: 3,043,740. Global EGIDS level: 5 (Developing). Indigenous in: China (Bouyei), Vietnam (Giáy).

Yoy [yoy] (Dioi, Jui, Yoi, Yooi, Yooy). *Users*: 2,000 in Laos (1999 census). *Location*: Khammouan province. *Status*: 6b* (Threatened). *Class*: Kra-Dai, Kam-Tai, Tai, Northern. *Lg Use*: All also use Lao [lao]. *Writing*: Thai script, limited usage. *Other*: Maybe the same as Tai Yo [tyj] of Khammouan province, a Northern Tai language. Buddhist. *Map*: 29:45. *Worldwide*: Total users in all countries: 9,000. Also indigenous in: Thailand.

Language Map



Languages by Population

In this section the languages of Laos are listed in order of their population of first-language speakers within the country, from highest to lowest. The entries report just the population and status elements.

1,000,000 to 9,999,999

Lao [[lao](#)] *Users:* 3,430,000 in Laos (2015 census), based on ethnicity. 4,230,000 in Laos, all users. L2 users: 800,000. *Status:* 1 (National). Statutory national language (2003, Constitution, Article 89). *Worldwide:* Total users in all countries: 4,482,970 (as L1: 3,679,070; as L2: 803,900).

100,000 to 999,999

Khmu [[kjpg](#)] *Users:* 708,000 in Laos (2015 census), based on ethnicity. *Status:* 5 (Developing). *Worldwide:* Total users in all countries: 825,700.

Phu Thai [[pht](#)] *Users:* 218,000 in Laos (2015 census), based on ethnicity. *Status:* 6a* (Vigorous). *Worldwide:* Total users in all countries: 897,000.

Hmong Daw [[mww](#)] *Users:* 170,000 in Laos (1995 census). *Status:* 5* (Developing). *Worldwide:* Total users in all countries: 1,978,400.

So [[sss](#)] *Users:* 163,000 in Laos (2015 census), based on ethnicity, includes Western Bru [[brv](#)]. *Status:* 6a (Vigorous). *Worldwide:* Total users in all countries: 233,000.

Lü [[khh](#)] *Users:* 126,000 in Laos (2015 census), based on ethnicity. *Status:* 6b* (Threatened). *Worldwide:* Total users in all countries: 555,760.

Phuan [[phu](#)] *Users:* 115,000 in Laos (Schliesinger 2003a), based on ethnicity. *Status:* 6a* (Vigorous). *Worldwide:* Total users in all countries: 316,000.

Akha [[ahk](#)] *Users:* 113,000 in Laos (2015 census), based on ethnicity. *Status:* 5* (Dispersed). *Worldwide:* Total users in all countries: 616,600.

Hmong Njua [[hnj](#)] *Users:* 100,000 in Laos (Hattaway 2003). *Status:* 6a* (Vigorous). *Worldwide:* Total users in all countries: 468,920.

10,000 to 99,999

Chinese, Mandarin [[cmn](#)] *Users:* 66,000 in Laos (2018 J. Leclerc), based on ethnicity. *Status:* Unestablished. *Worldwide:* Total users in all countries: 1,138,222,350 (as L1: 939,237,350; as L2: 198,985,000).

Katang, Northern [[ncq](#)] *Users:* 65,000 (2016). *Status:* 6a (Vigorous).

Tai Dam [blt] *Users:* 65,000 in Laos (Schliesinger 2003a). *Status:* 5* (Developing). *Worldwide:* Total users in all countries: 777,700.

Laven [lbo] *Users:* 56,400 (2015 census), based on ethnicity. *Status:* 6a* (Vigorous).

Kang [kyp] *Users:* 47,600 in Laos (1995 census). *Status:* 6a* (Vigorous). *Worldwide:* Total users in all countries: 81,700.

Kuay [kdt] *Users:* 46,600 in Laos (2015 census), based on ethnicity. 34,200 monolinguals (2005). *Status:* 6b (Threatened). *Worldwide:* Total users in all countries: 456,600.

Katang, Southern [sct] *Users:* 40,000 (2016). *Status:* 6a (Vigorous).

Phunoi [pho] *Users:* 39,200 (2015 census), based on ethnicity. *Status:* 6a* (Vigorous).

Talieng [tdf] *Users:* 38,400 (2015 census), based on ethnicity. *Status:* 6a (Vigorous).

Bru, Eastern [bru] *Users:* 37,400 in Laos (2015 census), based on ethnicity. *Status:* 5 (Developing). *Worldwide:* Total users in all countries: 132,000.

Laos Sign Language [lso] *Users:* 36,000 (2021 DBS/DOOR/SIL). Estimated 21,000–42,000 deaf signers, based on 0.3%–0.6% of total population. *Status:* 6a* (Vigorous).

Tai Dón [twh] *Users:* 33,000 in Laos (Schliesinger 2003a). *Status:* 6a* (Vigorous). *Worldwide:* Total users in all countries: 328,000.

Iu Mien [ium] *Users:* 32,400 in Laos (2015 census), based on ethnicity. *Status:* 5* (Developing). *Worldwide:* Total users in all countries: 834,800.

Oy [oyb] *Users:* 32,200 (2015 census), based on ethnicity. 23,500 Oy and 8,690 Jeng (2015 census). 8,960 monolinguals (2007). *Status:* 6a (Vigorous).

Ta'oih, Upper [tth] *Users:* 30,900 in Laos (1995 census), increasing. 21,600 monolinguals (1995). *Status:* 6a (Vigorous). *Worldwide:* Total users in all countries: 49,900.

Phong-Kniang [pnx] *Users:* 30,700 (2015 census), based on ethnicity. *Status:* 6a* (Vigorous).

Thai, Northern [nod] *Users:* 29,500 in Laos (2005 census). *Status:* 6a* (Vigorous). *Worldwide:* Total users in all countries: 6,029,500.

Prai [prt] *Users:* 28,700 in Laos (2015 census), based on ethnicity. *Status:* 6a* (Vigorous). *Worldwide:* Total users in all countries: 48,700.

Katu, Western [kuf] *Users:* 28,400 (2015 census), based on ethnicity. *Status:* 6a (Vigorous).

Brao [brb] *Users:* 26,000 in Laos (2015 census), based on ethnicity. *Status:* 6a (Vigorous). *Worldwide:* Total users in all countries: 35,560.

Alak [alk] *Users:* 25,000 (2015 census), based on ethnicity. *Status:* 6a* (Vigorous).

Tai Daeng [tyr] *Users:* 25,000 in Laos (Asian Minorities Outreach 1999b). *Status:* 6b* (Threatened). *Worldwide:* Total users in all countries: 105,000.

Mal [mlf] *Users:* 23,200 in Laos (1995 census). *Status:* 5* (Developing). *Worldwide:* Total users

in all countries: 26,700.

Pacoh [[pac](#)] *Users*: 22,600 in Laos (2015 census), based on ethnicity. 11,600 monolinguals (2005). *Status*: 6a (Vigorous). *Worldwide*: Total users in all countries: 38,600.

Rmeet [[lbn](#)] *Users*: 22,400 (2015 census), based on ethnicity. *Status*: 6a* (Vigorous).

Lahu [[lhu](#)] *Users*: 19,200 in Laos (2015 census), increasing, based on ethnicity. *Status*: 6a* (Vigorous). *Worldwide*: Total users in all countries: 591,300.

Vietnamese [[vie](#)] *Users*: 18,900 in Laos (2015 census), based on ethnicity. *Status*: Unestablished. *Worldwide*: Total users in all countries: 85,807,700 (as L1: 85,023,700; as L2: 784,000).

Chinese, Yue [[yue](#)] *Users*: 18,000 in Laos (2018 J. Leclerc), based on ethnicity. *Status*: Unestablished. *Worldwide*: Total users in all countries: 86,633,370 (as L1: 86,116,370; as L2: 517,000).

Kriang [[ngt](#)] *Users*: 16,800 (2015 census), based on ethnicity. 9,030 monolinguals (2005). *Status*: 5 (Developing).

Ta'oih, Lower [[tto](#)] *Users*: 15,800 (2000), increasing. *Status*: 6a (Vigorous).

Tai Nüa [[tdd](#)] *Users*: 14,100 in Laos (2015 census), based on ethnicity. *Status*: 6b* (Threatened). *Worldwide*: Total users in all countries: 726,100.

Jeh [[jeh](#)] *Users*: 11,500 in Laos (2015 census), based on ethnicity. *Status*: 5* (Developing). *Worldwide*: Total users in all countries: 26,700.

Ong [[oog](#)] *Users*: 10,300 (2000). *Status*: 7 (Shifting).

1,000 to 9,999

Ksing Mul [[puo](#)] *Users*: 9,870 in Laos (2015 census), based on ethnicity. *Status*: 6a* (Vigorous). *Worldwide*: Total users in all countries: 39,370.

Laopang [[lbg](#)] *Users*: 9,550 (2000). *Status*: 6a* (Vigorous).

Nyaheun [[nev](#)] *Users*: 9,000 (2015 census), based on ethnicity. *Status*: 6a (Vigorous).

Bo [[bgl](#)] *Users*: 8,000 (Schliesinger 2003b), based on ethnicity. *Status*: 6b (Threatened).

Khuen [[khf](#)] *Users*: 8,000 in Laos (1995 L. Chazee). *Status*: 6a* (Vigorous). *Worldwide*: Total users in all countries: 9,000.

Tai Yo [[tyj](#)] *Users*: 7,200 in Laos (1995 census). *Status*: 6a* (Vigorous). *Worldwide*: Total users in all countries: 7,500.

Khmer [[khm](#)] *Users*: 7,000 in Laos (2015 census), based on ethnicity. *Status*: Unestablished. *Worldwide*: Total users in all countries: 17,996,950 (as L1: 16,991,050; as L2: 1,005,900).

Yang [[pcc](#)] *Users*: 5,840 in Laos (2015 census), based on ethnicity. *Status*: 6a* (Vigorous). *Worldwide*: Total users in all countries: 3,043,740.

Bru, Western [brv] *Users:* 5,000 in Laos (2022 N. Cheeseman). *Status:* 6a* (Vigorous).
Worldwide: Total users in all countries: 25,000.

Tareng [tgr] *Users:* 5,000 (Wurm and Hattori 1981). *Status:* 6a* (Vigorous).

Tai Long [thi] *Users:* 4,800 (2004). *Status:* 6a* (Vigorous).

Kim Mun [mji] *Users:* 4,500 in Laos (1995 L. Chazee). *Status:* 6a* (Vigorous). *Worldwide:* Total users in all countries: 374,500.

Ir [irr] *Users:* 4,420 (Asian Minorities Outreach 1999b), based on ethnicity. *Status:* 6a* (Vigorous).

Salang [hal] *Users:* 4,000 in Laos (Asian Minorities Outreach 1999b). *Status:* 6b* (Threatened).
Worldwide: Total users in all countries: 17,500.

Saek [skb] *Users:* 3,840 in Laos (2015 census), based on ethnicity. *Status:* 6b* (Threatened).
Worldwide: Total users in all countries: 7,340.

Hung [hnu] *Users:* 3,630 in Laos (2015 census), based on ethnicity. *Status:* 7 (Shifting).
Worldwide: Total users in all countries: 4,130.

Samtao [stu] *Users:* 3,420 in Laos (2015 census), based on ethnicity. *Status:* 6b* (Threatened).
Worldwide: Total users in all countries: 13,170.

Sila [slt] *Users:* 3,150 in Laos (2015 census), based on ethnicity. *Status:* 6a (Vigorous).
Worldwide: Total users in all countries: 4,060.

Lahu Si [lhi] *Users:* 3,000 in Laos (2007). *Status:* 6a* (Vigorous). *Worldwide:* Total users in all countries: 196,200.

Myen [mya] *Users:* 2,840 in Laos (2015 census). *Status:* Unestablished. *Worldwide:* Total users in all countries: 43,025,110 (as L1: 33,023,270; as L2: 10,001,840).

Sou [sqq] *Users:* 2,500 (Schliesinger 2003b). *Status:* 6b* (Threatened).

Tai Pao [tpo] *Users:* 2,500 in Laos (Schliesinger 2003a). *Status:* 6b* (Threatened). *Worldwide:* Total users in all countries: 12,500.

Bit [bgk] *Users:* 2,370 in Laos (2015 census), based on ethnicity. *Status:* 6a (Vigorous).
Worldwide: Total users in all countries: 2,570.

Kiorr [xko] *Users:* 2,360 (1985 F. Proschan). *Status:* 6b* (Threatened).

Halang Doan [hld] *Users:* 2,350 in Laos (2000). *Status:* 6b* (Threatened). *Worldwide:* Total users in all countries: 4,850.

Khua [xhv] *Users:* 2,000 in Laos (1981). *Status:* 6b* (Threatened). *Worldwide:* Total users in all countries: 3,000.

Yoy [yoy] *Users:* 2,000 in Laos (1999 census). *Status:* 6b* (Threatened). *Worldwide:* Total users in all countries: 9,000.

Akeu [acu] *Users:* 1,000 in Laos (1996 E. Johnson). *Status:* 6a (Vigorous). *Worldwide:* Total users in all countries: 12,400.

Chepya [yep] *Users:* 1,000 (Bradley 2007b). Ethnic population: 2,000 (Bradley 2007b). *Status:* 7 (Shifting).

Con [cno] *Users:* 1,000 (Wurm and Hattori 1981). *Status:* 6b* (Threatened).

Sapuan [spu] *Users:* 1,000 (Sidwell 2003). *Status:* 6a (Vigorous).

100 to 999

Sedang [sed] *Users:* 900 in Laos (2015 census), based on ethnicity. *Status:* 6a* (Vigorous). *Worldwide:* Total users in all countries: 212,900.

Kuan [uan] *Users:* 890 (2015 census), based on ethnicity. *Status:* 6b* (Threatened).

Ngoaun [nuo] *Users:* 760 in Laos (2010 N. Cheeseman). *Status:* 6a* (Vigorous). *Worldwide:* Total users in all countries: 1,760.

Hani [hni] *Users:* 740 in Laos (2015 census), decreasing, based on ethnicity. *Status:* 6b (Threatened). *Worldwide:* Total users in all countries: 766,240.

Khün [kkh] *Users:* 600 in Laos (Schliesinger 2003a). *Status:* 6a* (Vigorous). *Worldwide:* Total users in all countries: 120,600.

O'du [tyh] *Users:* 600 in Laos (2015 census), decreasing, based on ethnicity. *Status:* 7 (Shifting). *Worldwide:* Total users in all countries: 1,030.

Maleng [pkt] *Users:* 500 in Laos (Bradley 2007a). Ethnic population: Less than 1,000. *Status:* 6b (Threatened). *Worldwide:* Total users in all countries: 1,700.

Phana' [phq] *Users:* 380 (Schliesinger 2003c). Ethnic population: Included within the Ahka [ahk] ethnic group. *Status:* 6b* (Threatened).

Aheu [thm] *Users:* 250 in Laos (Bradley 2007b). Ethnic population: 500 (Bradley 2007b). *Status:* 6b* (Threatened). *Worldwide:* Total users in all countries: 700.

Arem [aem] *Users:* 250 in Laos (Enfield and Diffloth 2009). Ethnic population: 500 (1995). *Status:* 8a (Moribund). *Worldwide:* Total users in all countries: 270.

Tai Khang [tnu] *Users:* 200. Ethnic population: 1,500 (Schliesinger 2003a). *Status:* 6b (Threatened).

Chut [scb] *Users:* 200 in Laos (Bradley 2007a). 50 May, 150 Ruc (Bradley 2007a). Ethnic population: 400 (Bradley 2007b). *Status:* 7 (Shifting). *Worldwide:* Total users in all countries: 1,250.

Kaduo [ktp] *Users:* 200 in Laos (Schliesinger 2003c). *Status:* 6a* (Vigorous). *Worldwide:* Total users in all countries: 180,200.

10 to 99

Mlabri [[mra](#)] *Users*: 40 in Laos (Schliesinger 2003b). *Ethnic population*: 67 (Schliesinger 2003d).
Status: 8a (Moribund). *Worldwide*: Total users in all countries: 440.

Unknown

Nung [[nut](#)] *Users*: A few in Laos. *Status*: 5* (Developing). *Worldwide*: Total users in all countries: 1,080,000.

Cham [[cja](#)] *Users*: Ethnic population: 340 (Schliesinger 2003a). *Status*: 8a (Moribund).
Worldwide: Total users in all countries: 312,500.

French [[fra](#)] *Users*: L2 users: 204,000 in Laos (Marcoux et al 2022), L2 users. *Status*: 5* (Dispersed). *Worldwide*: Total users in all countries: 309,804,220 (as L1: 80,770,190; as L2: 229,034,030).

Lavi [[lvi](#)] *Users*: Ethnic population: 1,220 (2015 census). *Status*: 8a (Moribund).

Tai Loi [[tlq](#)] *Users*: Ethnic population: 600 (Schliesinger 2003b). *Status*: 8b (Nearly extinct).

Languages by Status

In this section the languages of Laos are listed in order of their status within the country as represented by their level on the EGIDs scale (Lewis and Simons 2010). The language entries are reduced to just the information elements that are relevant to assessing the EGIDS level: population, status, language use, language development, and writing.

1 (National)

Lao [[lao](#)] *Users*: 4,230,000 in Laos, all users. L1 users: 3,430,000 in Laos (2015 census), based on ethnicity. L2 users: 800,000. *Status*: Statutory national language (2003, Constitution, Article 89). *Lg Dev*: Fully developed. Bible: 1932–2012. *Writing*: Lao script. *Worldwide*: Total users in all countries: 4,482,970 (as L1: 3,679,070; as L2: 803,900).

5 (Developing)

Bru, Eastern [[bru](#)] *Users*: 37,400 in Laos (2015 census), based on ethnicity. *Lg Use*: Vigorous. Used by all. Also use Lao [[lao](#)]. Used as L2 by Arem [[aem](#)], Upper Ta'oïh [[tth](#)]. *Lg Dev*: Radio. Dictionary. Bible: 2014. *Writing*: Lao script, used in Laos. Latin script, used in Vietnam. Thai script. *Worldwide*: Total users in all countries: 132,000.

Hmong Daw [[mww](#)] *Users*: 170,000 in Laos (1995 census). *Lg Use*: Also use Lao [[lao](#)]. *Writing*: Lao script. Latin script, used since 1953, primary usage. Miao (Pollard) script, no longer in use, used in China. Pahawh Hmong script, used since 1959. Thai script, used in Thailand. *Worldwide*: Total users in all countries: 1,978,400.

Iu Mien [[ium](#)] *Users*: 32,400 in Laos (2015 census), based on ethnicity. *Lg Use*: Some language shift. Also use Lao [[lao](#)]. Used as L2 by Kim Mun [[mji](#)]. *Writing*: Han (Hanzi, Kanji, Hanja) script, dating from before Yuan dynasty, used in folk domains and text messaging. Lao script, used in Laos. Latin script, used at least since 1930s, used in China, Thailand, United States, France, Canada. Thai script, used in Thailand. *Worldwide*: Total users in all countries: 834,800.

Jeh [[jeh](#)] *Users*: 11,500 in Laos (2015 census), based on ethnicity. *Lg Use*: Also use Lao [[lao](#)]. *Writing*: Lao script. Latin script. *Worldwide*: Total users in all countries: 26,700.

Khmu [[kjj](#)] *Users*: 708,000 in Laos (2015 census), based on ethnicity. *Lg Use*: Vigorous. Used by all. Mixed attitudes. Many also use Lao [[lao](#)], especially under the age of 40. Used as L2 by Samtao [[stu](#)]. *Lg Dev*: Radio. TV. Dictionary. Grammar. Bible portions: 1918–2006. *Writing*: Duota script, used in a small collection of villages well away from the rest of the language group, also used in China. Lao script. Latin script. *Worldwide*: Total users in all countries: 825,700.

Kriang [[ngt](#)] *Users*: 16,800 (2015 census), based on ethnicity. 9,030 monolinguals (2005). *Lg*

Use: Vigorous. Used by all. Most also use Lao [lao] (Schliesinger 2003b). *Lg Dev:* Bible portions: 2019. *Writing:* Lao script.

Mal [mlf] *Users:* 23,200 in Laos (1995 census). *Lg Use:* Also use Lao [lao]. *Lg Dev:* NT: 1994–2015. *Writing:* Latin script. Thai script. *Worldwide:* Total users in all countries: 26,700.

Nung [nut] *Users:* A few in Laos. *Writing:* Latin script. *Worldwide:* Total users in all countries: 1,080,000.

Tai Dam [blt] *Users:* 65,000 in Laos (Schliesinger 2003a). *Lg Use:* Also use Lao [lao]. Used as L2 by Tai Dón [twh]. *Writing:* Lao script. Latin script. Tai Viet script. *Worldwide:* Total users in all countries: 777,700.

5 (Dispersed)

Akha [ahk] *Users:* 113,000 in Laos (2015 census), based on ethnicity. *Lg Use:* Also use Lao [lao]. Used as L2 by Chepya [ycp], Phana' [phq]. *Writing:* Latin script, used at least since 1950, used in China, Myanmar, and Thailand. Myanmar (Burmese) script, used in Myanmar. Thai script, used in Thailand. *Worldwide:* Total users in all countries: 616,600.

French [fra] *Users:* 204,000 in Laos (Marcoux et al 2022), L2 users. *Writing:* Braille script. Duployan shorthand. Latin script, primary usage. *Worldwide:* Total users in all countries: 309,804,220 (as L1: 80,770,190; as L2: 229,034,030).

6a (Vigorous)

Akeu [aeu] *Users:* 1,000 in Laos (1996 E. Johnson). *Lg Use:* Used by all. *Writing:* Latin script, developed in 2005, used mainly in Thailand and Myanmar. *Worldwide:* Total users in all countries: 12,400.

Alak [alk] *Users:* 25,000 (2015 census), based on ethnicity. *Lg Use:* Also use Lao [lao]. Used as L2 by Lavi [lvi], Talieng [tdf]. *Writing:* Unwritten.

Bit [bgk] *Users:* 2,370 in Laos (2015 census), based on ethnicity. *Lg Use:* Used by all. Also use Lao [lao]. *Lg Dev:* Grammar. *Writing:* Unwritten. *Worldwide:* Total users in all countries: 2,570.

Brao [brb] *Users:* 26,000 in Laos (2015 census), based on ethnicity. *Lg Use:* Used by all. Also use Lao [lao]. *Lg Dev:* Literature. Radio. Texts. Bible portions: 2007–2011. *Writing:* Khmer script. Lao script. Latin script. *Worldwide:* Total users in all countries: 35,560.

Bru, Western [brv] *Users:* 5,000 in Laos (2022 N. Cheeseman). *Lg Use:* Most also use Lao [lao]. *Lg Dev:* Dictionary. Texts. Bible portions: 2007–2015. *Writing:* Lao script. Thai script. *Worldwide:* Total users in all countries: 25,000.

Hmong Njua [hnj] *Users:* 100,000 in Laos (Hattaway 2003). *Lg Use:* Also use Lao [lao]. *Lg Dev:* Literature. Dictionary. Grammar. Bible: 2011. *Writing:* Lao script. Latin script, primary usage. Miao (Pollard) script, used in China. Pahawh Hmong script. Thai script, used in Thailand.

Worldwide: Total users in all countries: 468,920.

Ir [irr] *Users:* 4,420 (Asian Minorities Outreach 1999b), based on ethnicity. *Lg Use:* Also use Lao [lao].

Kaduo [ktp] *Users:* 200 in Laos (Schliesinger 2003c). *Lg Use:* Also use Lao [lao]. *Writing:* Miao (Pollard) script, no longer in use. *Worldwide:* Total users in all countries: 180,200.

Kang [kyp] *Users:* 47,600 in Laos (1995 census). *Lg Use:* Also use Lao [lao]. *Writing:* Unwritten. *Worldwide:* Total users in all countries: 81,700.

Katang, Northern [ncq] *Users:* 65,000 (2016). *Lg Use:* Home. Used by all. Also use Lao [lao]. *Lg Dev:* NT: 2017. *Writing:* Lao script. Thai script.

Katang, Southern [sct] *Users:* 40,000 (2016). *Lg Use:* Vigorous. Home, community. Used by all. Most also use Lao [lao]. Used as L2 by Upper Ta'oih [tth]. *Writing:* Lao script.

Katu, Western [kuf] *Users:* 28,400 (2015 census), based on ethnicity. *Lg Use:* Used by all. Also use Lao [lao]. *Writing:* Lao script.

Khuen [khf] *Users:* 8,000 in Laos (1995 L. Chazee). *Lg Use:* Also use Lao [lao]. *Writing:* Thai script. *Worldwide:* Total users in all countries: 9,000.

Khün [kkh] *Users:* 600 in Laos (Schliesinger 2003a). *Writing:* Tai Tham (Lanna) script. *Worldwide:* Total users in all countries: 120,600.

Kim Mun [mji] *Users:* 4,500 in Laos (1995 L. Chazee). *Lg Use:* Also use Iu Mien [ium]. Also use Lahu [lhu]. Also use Lao [lao]. *Writing:* Latin script, used since 1983, experimental, used in China. *Worldwide:* Total users in all countries: 374,500.

Ksing Mul [puo] *Users:* 9,870 in Laos (2015 census), based on ethnicity. *Writing:* Unwritten. *Worldwide:* Total users in all countries: 39,370.

Lahu [lhu] *Users:* 19,200 in Laos (2015 census), increasing, based on ethnicity. *Lg Use:* Vigorous. Also use Lao [lao]. Used as L2 by Kim Mun [mji], Phana' [phq]. *Writing:* Latin script. *Worldwide:* Total users in all countries: 591,300.

Lahu Si [lhi] *Users:* 3,000 in Laos (2007). *Writing:* Latin script. *Worldwide:* Total users in all countries: 196,200.

Laopang [lbg] *Users:* 9,550 (2000). *Lg Use:* Also use Lao [lao].

Laos Sign Language [lso] *Users:* 36,000 (2021 DBS/DOOR/SIL). Estimated 21,000–42,000 deaf signers, based on 0.3%–0.6% of total population.

Laven [lbo] *Users:* 56,400 (2015 census), based on ethnicity. *Lg Use:* Also use Lao [lao]. *Lg Dev:* Dictionary. Grammar. *Writing:* Unwritten.

Ngoaun [nuo] *Users:* 760 in Laos (2010 N. Cheeseman). *Lg Use:* Also use Lao [lao]. *Writing:* Unwritten. *Worldwide:* Total users in all countries: 1,760.

Nyaheun [nev] *Users:* 9,000 (2015 census), based on ethnicity. *Lg Use:* Used by all. All also use

Lao [lao] (Schliesinger 2003b). *Writing*: Unwritten.

Oy [oyb] *Users*: 32,200 (2015 census), based on ethnicity. 23,500 Oy and 8,690 Jeng (2015 census). 8,960 monolinguals (2007). *Lg Use*: Used by all. Also use Lao [lao]. *Writing*: Unwritten.

Pacoh [pac] *Users*: 22,600 in Laos (2015 census), based on ethnicity. 11,600 monolinguals (2005). *Lg Use*: Used by all. Also use Lao [lao]. Used as L2 by Upper Ta'oih [tth]. *Writing*: Lao script, in development for Ka'do. Latin script. *Worldwide*: Total users in all countries: 38,600.

Phong-Kniang [pnx] *Users*: 30,700 (2015 census), based on ethnicity. *Lg Use*: Also use Lao [lao]. *Writing*: Unwritten.

Phu Thai [pht] *Users*: 218,000 in Laos (2015 census), based on ethnicity. *Lg Use*: Also use Lao [lao]. *Writing*: Thai script. *Worldwide*: Total users in all countries: 897,000.

Phuan [phu] *Users*: 115,000 in Laos (Schliesinger 2003a), based on ethnicity. *Lg Use*: Also use Lao [lao]. *Writing*: Unwritten. *Worldwide*: Total users in all countries: 316,000.

Phunoi [pho] *Users*: 39,200 (2015 census), based on ethnicity. *Lg Use*: Vigorous. Also use Lao [lao]. *Writing*: Lao script.

Prai [prt] *Users*: 28,700 in Laos (2015 census), based on ethnicity. *Lg Use*: Vigorous. Also use Lao [lao]. *Writing*: Thai script. *Worldwide*: Total users in all countries: 48,700.

Rmeet [lbn] *Users*: 22,400 (2015 census), based on ethnicity. *Lg Use*: Also use Lao [lao]. *Writing*: Lao script. Latin script.

Sapuan [spu] *Users*: 1,000 (Sidwell 2003). *Lg Use*: Used by all. Also use Lao [lao]. *Writing*: Unwritten.

Sedang [sed] *Users*: 900 in Laos (2015 census), based on ethnicity. *Writing*: Latin script. *Worldwide*: Total users in all countries: 212,900.

Sila [slt] *Users*: 3,150 in Laos (2015 census), based on ethnicity. *Lg Use*: Home. Used by all. Neutral attitudes. Most also use Lao [lao] (Badenoch and Hayashi 2017). Most also use Lü [khb] (Badenoch and Hayashi 2017). *Worldwide*: Total users in all countries: 4,060.

So [sss] *Users*: 163,000 in Laos (2015 census), based on ethnicity, includes Western Bru [brv]. *Lg Use*: Used by all. Also use Lao [lao]. *Lg Dev*: Dictionary. Grammar. Bible portions: 1980–2004. *Writing*: Lao script, used in Laos. Thai script, used in Thailand. *Worldwide*: Total users in all countries: 233,000.

Tai Dón [twh] *Users*: 33,000 in Laos (Schliesinger 2003a). *Lg Use*: A large influential group. Also use Tai Dam [blt]. *Writing*: Latin script. Tai Viet script. *Worldwide*: Total users in all countries: 328,000.

Tai Long [thi] *Users*: 4,800 (2004). *Lg Use*: Also use Lao [lao].

Tai Yo [tyj] *Users*: 7,200 in Laos (1995 census). *Lg Use*: Also use Lao [lao]. *Writing*: Latin script.

Tai Yo script, limited usage. *Worldwide*: Total users in all countries: 7,500.

Talieng [tdf] *Users*: 38,400 (2015 census), based on ethnicity. *Lg Use*: Used by all. Also use Alak [alk]. Also use Lao [lao]. Used as L2 by Lavi [lvi]. *Writing*: Unwritten.

Ta'oih, Lower [tto] *Users*: 15,800 (2000), increasing. *Lg Use*: Vigorous. Used by all, in some villages. Positive attitudes. A few also use Lao [lao]. Also use Upper Ta'oih [tth]. *Writing*: Lao script.

Ta'oih, Upper [tth] *Users*: 30,900 in Laos (1995 census), increasing. 21,600 monolinguals (1995). *Lg Use*: Vigorous. Used by all, in some villages. Positive attitudes. Some also use Lao [lao]. Also use Eastern Bru [bru]. Also use Pacoh [pac]. Also use Southern Katang [sct]. Used as L2 by Lower Ta'oih [tto]. *Writing*: Lao script. *Worldwide*: Total users in all countries: 49,900.

Tareng [tgr] *Users*: 5,000 (Wurm and Hattori 1981). *Lg Use*: Also use Lao [lao].

Thai, Northern [nod] *Users*: 29,500 in Laos (2005 census). *Lg Use*: Also use Lao [lao]. *Writing*: Tai Tham (Lanna) script, limited usage. Thai script. *Worldwide*: Total users in all countries: 6,029,500.

Yang [pcc] *Users*: 5,840 in Laos (2015 census), based on ethnicity. *Lg Use*: Also use Lü [khh] (Chazée 1999). *Writing*: Han (Hanzi, Kanji, Hanja) script, dating from late Ming/early Qing dynasty, limited use in ritual texts and folk literature. Latin script, official usage since 1985. *Worldwide*: Total users in all countries: 3,043,740.

6b (Threatened)

Aheu [thm] *Users*: 250 in Laos (Bradley 2007b). Ethnic population: 500 (Bradley 2007b). *Writing*: Unwritten. *Worldwide*: Total users in all countries: 700.

Bo [bgl] *Users*: 8,000 (Schliesinger 2003b), based on ethnicity. *Lg Use*: Some young people, all adults. Also use Lao [lao].

Con [cno] *Users*: 1,000 (Wurm and Hattori 1981). *Lg Use*: Also use Lao [lao]. *Writing*: Unwritten.

Halang Doan [hld] *Users*: 2,350 in Laos (2000). *Lg Use*: Also use Lao [lao]. *Worldwide*: Total users in all countries: 4,850.

Hani [hni] *Users*: 740 in Laos (2015 census), decreasing, based on ethnicity. *Lg Use*: Some young people, all adults. Also use Lao [lao]. *Writing*: Latin script, pinyin-based, used in 1958–1964 and from 1982, experimental, used in education, literature, and media. *Worldwide*: Total users in all countries: 766,240.

Khua [xhv] *Users*: 2,000 in Laos (1981). *Lg Use*: Also use Lao [lao]. *Worldwide*: Total users in all countries: 3,000.

Kiorr [xko] *Users*: 2,360 (1985 F. Proschan). *Lg Use*: Also use Lao [lao]. *Writing*: Unwritten.

Kuan [uan] *Users*: 890 (2015 census), based on ethnicity. *Lg Use*: Also use Lao [lao]. Used as L2

by Samtao [stu].

Kuay [kdt] *Users:* 46,600 in Laos (2015 census), based on ethnicity. 34,200 monolinguals (2005). *Lg Use:* Some young people, all adults. Also use Lao [lao]. *Writing:* Khmer script, used in Cambodia. Lao script, used in Laos. Thai script. *Worldwide:* Total users in all countries: 456,600.

Lü [khb] *Users:* 126,000 in Laos (2015 census), based on ethnicity. *Lg Use:* Also use Lao [lao]. Used as L2 by Samtao [stu], Sila [slt], Yang [pcc]. *Writing:* New Tai Lue script, used in Yunnan Province, China. Tai Tham (Lanna) script, still used by some, particularly in Buddhist monasteries in Yunnan Province, China. *Worldwide:* Total users in all countries: 555,760.

Maleng [pkt] *Users:* 500 in Laos (Bradley 2007a). Ethnic population: Less than 1,000. *Lg Use:* Some young people, all adults. All also use Lao [lao] (Schliesinger 2003b). *Worldwide:* Total users in all countries: 1,700.

Phana' [phq] *Users:* 380 (Schliesinger 2003c). Ethnic population: Included within the Ahka [ahk] ethnic group. *Lg Use:* Being replaced by Lahu [lhu] in Houayxay District, by Akha [ahk] in Namtha Province (Bradley 2007a). Also use Akha [ahk]. Also use Lahu [lhu].

Saek [skb] *Users:* 3,840 in Laos (2015 census), based on ethnicity. *Lg Use:* Most also use Lao [lao] (Asian Minorities Outreach 1999b). Used as L2 by Arem [aem]. *Lg Dev:* Dictionary. *Writing:* Unwritten. *Worldwide:* Total users in all countries: 7,340.

Salang [hal] *Users:* 4,000 in Laos (Asian Minorities Outreach 1999b). *Lg Use:* Also use Lao [lao]. *Writing:* Latin script. *Worldwide:* Total users in all countries: 17,500.

Samtao [stu] *Users:* 3,420 in Laos (2015 census), based on ethnicity. *Lg Use:* Children in Luang Namtha province are not using the language (Schliesinger 2003b). Some also use Khmu [kjpg] (Asian Minorities Outreach 1999b). Some also use Kuan [uan] (Asian Minorities Outreach 1999b). Some also use Lao [lao] (Asian Minorities Outreach 1999b). Some also use Lü [khb] (Asian Minorities Outreach 1999b). Used as L2 by Tai Loi [tlq]. *Writing:* Unwritten. *Worldwide:* Total users in all countries: 13,170.

Sou [sqq] *Users:* 2,500 (Schliesinger 2003b). *Lg Use:* Also use Lao [lao]. *Writing:* Unwritten.

Tai Daeng [tyr] *Users:* 25,000 in Laos (Asian Minorities Outreach 1999b). *Lg Use:* Also use Lao [lao]. Used as L2 by O'du [tyh]. *Writing:* Tai Viet script. *Worldwide:* Total users in all countries: 105,000.

Tai Khang [tnu] *Users:* 200. Ethnic population: 1,500 (Schliesinger 2003a). *Lg Use:* Some young people, all adults. Many also use Lao [lao].

Tai Nüa [tdd] *Users:* 14,100 in Laos (2015 census), based on ethnicity. *Writing:* Tai Le script, used in the Dehong Dai and Jingpho Autonomous Prefecture, Yunnan Province, China. *Worldwide:* Total users in all countries: 726,100.

Tai Pao [tpo] *Users:* 2,500 in Laos (Schliesinger 2003a). *Lg Use:* Also use Lao [lao]. *Worldwide:* Total users in all countries: 12,500.

Yoy [yoy] *Users:* 2,000 in Laos (1999 census). *Lg Use:* All also use Lao [lao]. *Writing:* Thai script, limited usage. *Worldwide:* Total users in all countries: 9,000.

7 (Shifting)

Chepya [yep] *Users:* 1,000 (Bradley 2007b). Ethnic population: 2,000 (Bradley 2007b). *Lg Use:* Shifting to Akha [ahk] (Bradley 2007b).

Chut [scb] *Users:* 200 in Laos (Bradley 2007a). 50 May, 150 Ruc (Bradley 2007a). Ethnic population: 400 (Bradley 2007b). *Lg Use:* Shifting to Vietnamese [vie]. *Writing:* Unwritten. *Worldwide:* Total users in all countries: 1,250.

Hung [hnu] *Users:* 3,630 in Laos (2015 census), based on ethnicity. *Lg Use:* Shifting to Lao [lao]. *Worldwide:* Total users in all countries: 4,130.

O'du [tyh] *Users:* 600 in Laos (2015 census), decreasing, based on ethnicity. *Lg Use:* Adults only. Shifting to Tai Daeng [tyr] (Schliesinger 2003b). *Worldwide:* Total users in all countries: 1,030.

Ong [oog] *Users:* 10,300 (2000). *Lg Use:* Shifting to Lao [lao]. *Writing:* Unwritten.

8a (Moribund)

Arem [aem] *Users:* 250 in Laos (Enfield and Diffloth 2009). Ethnic population: 500 (1995). *Lg Use:* Shifted to Vietnamese [vie]. Also use Eastern Bru [bru]. Also use Lao [lao]. Also use Saek [skb]. *Worldwide:* Total users in all countries: 270.

Cham [cja] *Users:* Ethnic population: 340 (Schliesinger 2003a). *Lg Use:* Older adults only. Shifted to Lao [lao]. *Writing:* Arabic script, Naskh variant. Cham script. Latin script. *Worldwide:* Total users in all countries: 312,500.

Lavi [lvi] *Users:* Ethnic population: 1,220 (2015 census). *Lg Use:* Seriously endangered (Sidwell 2003). Older adults only. Shifted to Lao [lao]. Many also use Alak [alk] (Asian Minorities Outreach 1999b). Many also use Talieng [tdf] (Asian Minorities Outreach 1999b).

Mlabri [mra] *Users:* 40 in Laos (Schliesinger 2003b). Ethnic population: 67 (Schliesinger 2003d). *Lg Use:* Shifted to Lao [lao]. *Writing:* Thai script. *Worldwide:* Total users in all countries: 440.

8b (Nearly extinct)

Tai Loi [tlq] *Users:* Ethnic population: 600 (Schliesinger 2003b). *Lg Use:* The Doi [tlq] have almost given up their original language and communicate even among themselves in Lao [lao] dialect (Schliesinger 2003b). Elderly only. Shifted to Lao [lao]. A few also use Samtao [stu] (Schliesinger 2003b). *Writing:* Latin script.

Unestablished

Chinese, Mandarin [cmn] *Users:* 66,000 in Laos (2018 J. Leclerc), based on ethnicity. *Writing:* Bopomofo script, used since 1913, revised in 1920 and 1932, mainly used in Taiwan. Braille script. Han script, Simplified variant, used since 1956, official in Mainland China (1956) and Singapore (1969), also used elsewhere. Han script, Traditional variant, used since mid-19th century, official in Taiwan, also used elsewhere. Latin script. *Worldwide:* Total users in all countries: 1,138,222,350 (as L1: 939,237,350; as L2: 198,985,000).

Chinese, Yue [yue] *Users:* 18,000 in Laos (2018 J. Leclerc), based on ethnicity. *Writing:* Braille script, used in Hong Kong. Han script, Simplified variant. Han script, Traditional variant, official usage in Hong Kong and Macau, also used elsewhere. Latin script, used since mid-19th century. *Worldwide:* Total users in all countries: 86,633,370 (as L1: 86,116,370; as L2: 517,000).

Khmer [khm] *Users:* 7,000 in Laos (2015 census), based on ethnicity. *Writing:* Khmer script. *Worldwide:* Total users in all countries: 17,996,950 (as L1: 16,991,050; as L2: 1,005,900).

Myen [mya] *Users:* 2,840 in Laos (2015 census). *Writing:* Braille script. Myanmar (Burmese) script, primary usage. *Worldwide:* Total users in all countries: 43,025,110 (as L1: 33,023,270; as L2: 10,001,840).

Vietnamese [vie] *Users:* 18,900 in Laos (2015 census), based on ethnicity. *Lg Use:* Used as L2 by Arem [aem], Chut [scb]. *Writing:* Braille script. Han (Hanzi, Kanji, Hanja) script. Latin script, primary usage. *Worldwide:* Total users in all countries: 85,807,700 (as L1: 85,023,700; as L2: 784,000).

Languages by Province

This index gives an alphabetical listing of the top-level administrative subdivisions within Laos. Under the name of each province is a list of the language communities that are located within its area.

Attapu

Alak [alk], 11
 Brao [brb], 12
 Halang Doan [hld], 14
 Jeh [jeh], 16
 Laven [lbo], 20
 Nyaheun [nev], 21
 Oy [oyb], 22
 Salang [hal], 24
 Sedang [sed], 24
 Sou [sqq], 25
 Talieng [tdf], 26

Bokeo

Con [cno], 13
 Hmong Daw [mww], 14
 Hmong Njua [hnj], 15
 Iu Mien [ium], 15
 Lahu [lhu], 19
 Lahu Si [lhi], 19
 Laopang [lbg], 19
 Lü [khh], 20
 Myen [mya], 21
 Phana' [phq], 22
 Rmeet [lbn], 23
 Samtao [stu], 24
 Tai Dam [blt], 25

Bolikhamxai

Aheu [thm], 11
 Bo [bgl], 12
 Hmong Daw [mww], 14
 Hmong Njua [hnj], 15
 Hung [hnu], 15
 Kuan [uan], 18
 Maleng [pkt], 20
 Phu Thai [pht], 22

Phuan [phu], 23

Saek [skb], 23

So [sss], 24

Tai Daeng [tyr], 25

Tai Dam [blt], 25

Tai Khang [tnu], 25

Tai Nüa [tdd], 26

Tai Pao [tpo], 26

Tai Yo [tyj], 26

Champasak

Brao [brb], 12
 Khmer [khm], 17
 Kriang [ngt], 18
 Kuay [kdt], 18
 Laven [lbo], 20
 Nyaheun [nev], 21
 Ong [oog], 21
 Oy [oyb], 22
 Phu Thai [pht], 22
 Sapuan [spu], 24

Houaphan

Hmong Daw [mww], 14
 Hmong Njua [hnj], 15
 Kang [kyp], 16
 Ksing Mul [puo], 18
 Phong-Kniang [pnx], 22
 Phuan [phu], 23
 Tai Daeng [tyr], 25
 Tai Dam [blt], 25
 Tai Dón [twh], 25
 Tai Nüa [tdd], 26

Khammouan

Arem [aem], 11
 Bo [bgl], 12
 Bru, Eastern [bru], 12

Bru, Western [brv], 12
 Chut [scb], 13
 Hmong Daw [mww], 14
 Hmong Njua [hnj], 15
 Khua [xhv], 17
 Maleng [pkt], 20
 Ngoaun [nuo], 21
 Phu Thai [pht], 22
 Saek [skb], 23
 So [sss], 24
 Yoy [yoy], 28

Louangphabang

Hmong Daw [mww], 14
 Hmong Njua [hnj], 15
 Khün [kkh], 17
 Lü [khh], 20
 Nung [nut], 21
 Phuan [phu], 23
 Tai Daeng [tyr], 25
 Tai Dam [blt], 25
 Tai Dón [twh], 25
 Tai Long [thi], 26

Luang Namtha

Akha [ahk], 11
 Bit [bgk], 11
 Con [cno], 13
 Hmong Daw [mww], 14
 Hmong Njua [hnj], 15
 Iu Mien [ium], 15
 Khuen [khf], 17
 Kim Mun [mji], 17
 Kiorr [xko], 18
 Lahu [lhu], 19
 Lü [khh], 20
 Myen [mya], 21
 Phana' [phq], 22
 Phuan [phu], 23
 Rmeet [lbn], 23
 Samtao [stu], 24
 Sila [slt], 24
 Tai Daeng [tyr], 25
 Tai Dam [blt], 25

Tai Dón [twh], 25
 Tai Loi [tlq], 26
 Yang [pcc], 28

Oudomxai

Bit [bgk], 11
 Hmong Daw [mww], 14
 Hmong Njua [hnj], 15
 Kiorr [xko], 18
 Lü [khh], 20
 Rmeet [lbn], 23
 Sila [slt], 24
 Tai Daeng [tyr], 25
 Tai Dam [blt], 25
 Tai Dón [twh], 25
 Thai, Northern [nod], 27
 Yang [pcc], 28

Phongsali

Akeu [aeu], 11
 Akha [ahk], 11
 Bit [bgk], 11
 Chepya [ycp], 13
 Hani [hni], 14
 Hmong Daw [mww], 14
 Hmong Njua [hnj], 15
 Iu Mien [ium], 15
 Kaduo [ktp], 16
 Lü [khh], 20
 Phana' [phq], 22
 Phunoi [pho], 23
 Sila [slt], 24
 Tai Daeng [tyr], 25
 Tai Dam [blt], 25
 Tai Dón [twh], 25
 Yang [pcc], 28

Salavan

Alak [alk], 11
 Ir [irr], 15
 Katang, Northern [ncq], 16
 Katang, Southern [sct], 16
 Kriang [ngt], 18
 Kuay [kdt], 18

Laven [lbo], 20
 Ong [oog], 21
 Pacoh [pac], 22
 Phu Thai [pht], 22
 Ta'oih, Lower [tto], 27
 Ta'oih, Upper [tth], 27

Savannahkhet

Bru, Eastern [bru], 12
 Bru, Western [brv], 12
 Cham [cja], 12
 Katang, Northern [ncq], 16
 Kuay [kdt], 18
 Pacoh [pac], 22
 Phu Thai [pht], 22
 So [sss], 24
 Talieng [tdf], 26
 Ta'oih, Upper [tth], 27

Viengchan

Hmong Daw [mww], 14
 Hmong Njua [hnj], 15
 Phuan [phu], 23
 Tai Daeng [tyr], 25
 Tai Dam [blt], 25
 Tai Nua [tdd], 26

Viengchan Capital City

Cham [cja], 12
 Hmong Daw [mww], 14
 Hmong Njua [hnj], 15
 Myen [mya], 21
 Phuan [phu], 23

Xaisomboun

Tai Nua [tdd], 26

Xekong

Alak [alk], 11
 Halang Doan [hld], 14

Jeh [jeh], 16
 Katu, Western [kuf], 16
 Kriang [ngt], 18
 Laven [lbo], 20
 Lavi [lvi], 20
 Nyaheun [nev], 21
 Oy [oyb], 22
 Pacoh [pac], 22
 Sapuan [spu], 24
 Talieng [tdf], 26
 Ta'oih, Lower [tto], 27
 Ta'oih, Upper [tth], 27
 Tareng [tgr], 27

Xiangnabouli

Hmong Daw [mww], 14
 Hmong Njua [hnj], 15
 Iu Mien [ium], 15
 Lü [khb], 20
 Mal [mlf], 20
 Mlabri [mra], 20
 Myen [mya], 21
 Prai [prt], 23
 Tai Dam [blt], 25
 Thai, Northern [nod], 27

Xiengkhoang

Hmong Daw [mww], 14
 Hmong Njua [hnj], 15
 Kang [kyp], 16
 O'du [tyh], 21
 Phu Thai [pht], 22
 Phuan [phu], 23
 Tai Daeng [tyr], 25
 Tai Dam [blt], 25
 Tai Nua [tdd], 26

Languages by Family

This index gives an alphabetical listing of the linguistic classifications used for the established languages of Laos. The entries in this index represent the full path in the linguistic family tree from the highest level grouping down to the lowest. All the languages listed in the same entry are members of the same lowest-level subgroup. The referenced page contains the main entry that describes the language.

Austro-Asiatic, Mon-Khmer, Eastern Mon-Khmer, Bahnaric, Central Bahnaric

Alak [alk], [11](#)

Austro-Asiatic, Mon-Khmer, Eastern Mon-Khmer, Bahnaric, North Bahnaric, West

Talieng [tdf], [26](#)

Austro-Asiatic, Mon-Khmer, Eastern Mon-Khmer, Bahnaric, North Bahnaric, West, Duan

Halang Doan [hld], [14](#)

Austro-Asiatic, Mon-Khmer, Eastern Mon-Khmer, Bahnaric, North Bahnaric, West, Jeh-Halang

Halang [hal], [24](#)

Jeh [jeh], [16](#)

Austro-Asiatic, Mon-Khmer, Eastern Mon-Khmer, Bahnaric, North Bahnaric, West, Sedang-Todrah, Sedang

Sedang [sed], [24](#)

Austro-Asiatic, Mon-Khmer, Eastern Mon-Khmer, Bahnaric, West Bahnaric

Lavi [lvi], [20](#)

Austro-Asiatic, Mon-Khmer, Eastern Mon-Khmer, Bahnaric, West Bahnaric, Brao-Kravet

Brao [brb], [12](#)

Sou [sqq], [25](#)

Austro-Asiatic, Mon-Khmer, Eastern Mon-Khmer, Bahnaric, West Bahnaric, Laven

Laven [lbo], [20](#)

Austro-Asiatic, Mon-Khmer, Eastern Mon-Khmer, Bahnaric, West Bahnaric, Nyaheun

Nyaheun [nev], [21](#)

Austro-Asiatic, Mon-Khmer, Eastern Mon-Khmer, Bahnaric, West Bahnaric, Oi-The

Oy [oyb], [22](#)

Sapuan [spu], [24](#)

Austro-Asiatic, Mon-Khmer, Eastern Mon-Khmer, Katuic, Central Katuic, Ta'oih

Ir [irr], [15](#)

Ong [oog], [21](#)

Ta'oih, Lower [tto], [27](#)

Ta'oih, Upper [tth], [27](#)

Austro-Asiatic, Mon-Khmer, Eastern Mon-Khmer, Katuic, East Katuic, Katu-Pacoh

Katu, Western [kuf], [16](#)

Pacoh [pac], 22

Tareng [tgr], 27

Austro-Asiatic, Mon-Khmer, Eastern Mon-Khmer, Katuic, East Katuic, Ngeq-Nkriang

Kriang [ngt], 18

Austro-Asiatic, Mon-Khmer, Eastern Mon-Khmer, Katuic, West Katuic, Bru

Bru, Eastern [bru], 12

Bru, Western [brv], 12

Katang, Northern [ncq], 16

Katang, Southern [sct], 16

Khua [xhv], 17

So [sss], 24

Austro-Asiatic, Mon-Khmer, Eastern Mon-Khmer, Katuic, West Katuic, Kuay

Kuay [kdt], 18

Austro-Asiatic, Mon-Khmer, Northern Mon-Khmer, Khmuic, Mal-Khmu', Khmu'

Khmu [kjg], 17

Khuen [khf], 17

O'du [tyh], 21

Austro-Asiatic, Mon-Khmer, Northern Mon-Khmer, Khmuic, Mal-Khmu', Mal-Prai

Mal [mlf], 20

Prai [prt], 23

Austro-Asiatic, Mon-Khmer, Northern Mon-Khmer, Khmuic, Mlabri

Mlabri [mra], 20

Austro-Asiatic, Mon-Khmer, Northern Mon-Khmer, Khmuic, Xinh Mul

Phong-Kniang [pnx], 22

Puoc [puo], 18

Austro-Asiatic, Mon-Khmer, Northern Mon-Khmer, Palaungic, Eastern Palaungic, Angkuic

Kiorr [xko], 18

Samtao [stu], 24

Tai Loi [tlq], 26

Austro-Asiatic, Mon-Khmer, Northern Mon-Khmer, Palaungic, Eastern Palaungic, Bit-Khang

Bit [bgk], 11

Austro-Asiatic, Mon-Khmer, Northern Mon-Khmer, Palaungic, Eastern Palaungic, Lametic

Con [cno], 13

Rmeet [lbn], 23

Austro-Asiatic, Mon-Khmer, Viet-Muong, Chut

Arem [aem], 11

Chut [scb], 13

Maleng [pkt], 20

Austro-Asiatic, Mon-Khmer, Viet-Muong, Cuoi

Hung [hnu], 15

Austro-Asiatic, Mon-Khmer, Viet-Muong, Muong

Bo [bgl], 12

Nguôn [nuo], 21

Austro-Asiatic, Mon-Khmer, Viet-Muong, Thavung

Aheu [thm], 11

Austronesian, Malayo-Polynesian, Malayo-Chamic, Chamic, Coastal, Cham

Cham, Western [cja], 12

Hmong-Mien, Hmongic, Chuanqiandian

Hmong Daw [mww], 14

Hmong Njua [hnj], 15

Hmong-Mien, Mienic, Mian-Jin

Iu Mien [ium], 15

Kim Mun [mji], 17

Indo-European, Italic, Romance, Italo-Western, Western, Gallo-Iberian, Gallo-Romance, Gallo-Rhaetian, Oil, French

French [fra], 14

Kra-Dai, Kam-Tai, Kam-Sui

Kang [kyp], 16

Kra-Dai, Kam-Tai, Tai

Kuan [uan], 18

Tai Khang [tnu], 25

Tai Pao [tpo], 26

Tai Yo [tyj], 26

Kra-Dai, Kam-Tai, Tai, Central

Nung [nut], 21

Kra-Dai, Kam-Tai, Tai, Northern

Bouyei [pcc], 28

Saek [skb], 23

Yoy [yoy], 28

Kra-Dai, Kam-Tai, Tai, Southwestern

Khün [kkh], 17

Lao [lao], 19

Lü [khb], 20

Phu Thai [pht], 22

Phuan [phu], 23

Tai Daeng [tyr], 25

Tai Dam [blt], 25

Tai Dón [twh], 25

Tai Long [thi], 26

Tai Nua [tdd], 26

Thai, Northern [nod], 27

Sign language, Deaf community sign language

Laos Sign Language [lso], 19

Sino-Tibetan, Tibeto-Burman, Ngwi-Burmese, Ngwi, Central

Lahu [lhu], 19

Lahu Shi [lhi], 19

Sino-Tibetan, Tibeto-Burman, Ngwi-Burmese, Ngwi, Southern

Akeu [aeu], 11

Akha [ahk], 11

Chepya [ycp], 13

Hani [hni], 14

Kaduo [ktp], 16

Phana' [phq], 22

Sila [slt], 24

Sino-Tibetan, Tibeto-Burman, Ngwi-Burmese, Ngwi, Southern, Bisoid

Phunoi [pho], 23

Sino-Tibetan, Tibeto-Burman, Ngwi-Burmese, Ngwi, Unclassified

Laopang [lbg], 19

Language Code Index

This index gives an alphabetical listing of all 92 three-letter codes that are used in this work to uniquely identify languages. The referenced page contains the main entry that describes the language. All codes listed are part of the ISO 639-3 standard; see <http://www.sil.org/iso639-3/>.

aem	Arem, 11	lhi	Lahu Shi, 19
aeu	Akeu, 11	lhu	Lahu, 19
ahk	Akha, 11	lso	Laos Sign Language, 19
alk	Alak, 11	lvi	Lavi, 20
bgk	Bit, 11	mji	Kim Mun, 17
bgl	Bo (Laos), 12	mlf	Mal, 20
blt	Tai Dam, 25	mra	Mlabri, 20
brb	Brao, 12	mww	Hmong Daw, 14
bru	Bru, Eastern, 12	mya	Burmese, 21
brv	Bru, Western, 12	ncq	Katang, Northern, 16
cja	Cham, Western, 12	nev	Nyaheun, 21
cmn	Chinese, Mandarin, 13	ngt	Kriang, 18
cno	Con, 13	nod	Thai, Northern, 27
fra	French, 14	nuo	Nguôn, 21
hal	Halang, 24	nut	Nung, 21
hld	Halang Doan, 14	oog	Ong, 21
hni	Hani, 14	oyb	Oy, 22
hnj	Hmong Njua, 15	pac	Pacoh, 22
hnu	Hung, 15	pcc	Bouyei, 28
irr	Ir, 15	pho	Phunoi, 23
ium	Iu Mien, 15	phq	Phana', 22
jeh	Jeh, 16	pht	Phu Thai, 22
kdt	Kuay, 18	phu	Phuan, 23
khb	Lü, 20	pkt	Maleng, 20
khf	Khuen, 17	pnx	Phong-Kniang, 22
khm	Khmer, 17	prt	Prai, 23
kjg	Khmu, 17	puo	Puoc, 18
kkh	Khün, 17	scb	Chut, 13
ktp	Kaduo, 16	sct	Katang, Southern, 16
kuf	Katu, Western, 16	sed	Sedang, 24
kyp	Kang, 16	skb	Saek, 23
lao	Lao, 19	slt	Sila, 24
lbg	Laopang, 19	spu	Sapuan, 24
lbn	Rmeet, 23	sqq	Sou, 25
lbo	Laven, 20	sss	So (Laos), 24

stu	Samtao, 24	twh	Tai Dón, 25
tdd	Tai Nüa, 26	tyh	O'du, 21
tdf	Talieng, 26	tyj	Tai Yo, 26
tgr	Tareng, 27	tyr	Tai Daeng, 25
thi	Tai Long, 26	uan	Kuan, 18
thm	Aheu, 11	vie	Vietnamese, 27
tlq	Tai Loi, 26	xhv	Khua, 17
tnu	Tai Khang, 25	xko	Kiorr, 18
tpo	Tai Pao, 26	ycp	Chepya, 13
tth	Ta'oih, Upper, 27	yoy	Yoy, 28
tto	Ta'oih, Lower, 27	yue	Chinese, Yue, 13

Language Name Index

This index lists every name that appears in the language listings as a primary or alternate name of a language or dialect. The following abbreviations are used in the index entries: *alt.* ‘alternate name for’; *alt. dial.* ‘alternate name for a dialect of’; *dial.* ‘primary name for a dialect of’; *pej. alt.* ‘pejorative alternate name for’; and *pej. alt. dial.* ‘pejorative alternate name for a dialect of’. Each index entry resolves to the primary name for the language with which the indexed name is associated, followed by square brackets containing the unique three-letter language code from ISO 639-3. The referenced page contains the main entry that describes the language. If the language appears on a map, the entry for the primary name also lists page numbers for the maps on which the language occurs.

- Aheu** [thm], 11, 29
- Ahka**, *alt.* Akha [ahk], 11
- Aini**, *alt.* Akha [ahk], 11
- Aka**, *alt.* Akha [ahk], 11
- Ak’a**, *alt.* Akha [ahk], 11
- Akeu** [aeu], 11
- Akha** [ahk], 11, 29
- Aki**, *alt.* Akeu [aeu], 11
- Akui**, *alt.* Akeu [aeu], 11
- Alak** [alk], 11, 29
- Antra**, *dial.* Kuay [kdt], 18
- Aouei**, *alt.* Kuay [kdt], 18
- Arem** [aem], 11, 29
- Asong**, *alt.* Sila [slt], 24
- Bai Miao**, *alt.* Hmong Daw [mww], 14
- Bana’**, *alt.* Phana’ [phq], 22
- Bit** [bgk], 11, 29
- Black Khoany**, *dial.* Phunoi [pho], 23
- Black Tai**, *alt.* Tai Dam [blt], 25
- Blue Hmong**, *alt.* Hmong Njua [hnj], 15
- Blue Meo**, *pej. alt.* Hmong Njua [hnj], 15
- Bo** [bgl], 12, 29
- Bo River Van Kieu**, *alt.* Pacoh [pac], 22
- Boe**, *alt.* Bo [bgl], 12
- Boloven**, *alt.* Laven [lbo], 20
- Bor**, *alt.* Bo [bgl], 12
- Boriwen**, *alt.* Laven [lbo], 20
- Brao** [brb], 12, 29
- Braou**, *alt.* Brao [brb], 12
- Brau**, *alt.* Brao [brb], 12
- Brou**, *alt.* Brao [brb], 12
- Bru**, *alt.* Aheu [thm], 11
alt. Bru, Western [brv], 12
alt. So [sss], 24
- Bru Tri**, *alt.* Bru, Eastern [bru], 12
- Bru, Eastern** [bru], 12, 29
see Bru, Eastern [bru], 12
- Bru, Western** [brv], 12, 29
see Bru, Western [brv], 12
- Buxinhua**, *alt.* Bit [bgk], 11
- Cado**, *alt. dial.* Pacoh [pac], 22
- Cadô**, *alt. dial.* Pacoh [pac], 22
- Caliang**, *alt.* Talieng [tdf], 26
- Calieng**, *alt.* Talieng [tdf], 26
- Cam**, *alt.* Cham, Western [cja], 12
- Cang Pacóuh**, *alt.* Pacoh [pac], 22
- Chali**, *alt. dial.* Bru, Eastern [bru], 12
- Cham** [cja], 12
- Chăm**, *alt.* Cham, Western [cja], 12
- Cheng**, *alt. dial.* Oy [oyb], 22
- Chepya** [ycp], 13
- Chiem**, *alt.* Cham, Western [cja], 12

- Chiengceng**, *alt. dial.* Oy [oyb], 22
- Chinese Shan**, *alt.* Tai Nüa [tdd], 26
- Mandarin Chinese**, *see* Chinese, Mandarin [cmn], 13
- Yue Chinese**, *see* Chinese, Yue [yue], 13
- Ching Miao**, *alt.* Hmong Njua [hnj], 15
- Chombrau**, *alt.* Arem [aem], 11
- Chomrau**, *alt.* Arem [aem], 11
- Chut** [scb], 13, 29
- Col**, *alt.* Kiorr [xko], 18
- Con** [cno], 13, 29
alt. Kiorr [xko], 18
- Cuoi**, *alt.* Kuay [kdt], 18
- Cwaa**, *dial.* Khmu [kjpg], 17
- Dadang**, *alt.* Sedang [sed], 24
- Daeng**, *alt.* Tai Daeng [tyr], 25
- Dak Kang**, *dial.* Katu, Western [kuf], 16
- Die**, *alt.* Jeh [jeh], 16
- Dioi**, *alt.* Yoy [yoy], 28
- Doan**, *alt.* Halang Doan [hld], 14
- Doi**, *alt.* Tai Loi [tlq], 26
dial. Tai Loi [tlq], 26
- Douon**, *alt.* Kuay [kdt], 18
- Duan**, *alt.* Halang Doan [hld], 14
- Dui**, *alt.* Kuay [kdt], 18
- Eastern Khmu**, *alt. dial.* Khmu [kjpg], 17
- Eastern Thai**, *alt.* Lao [lao], 19
- Ekaw**, *pej. alt.* Akha [ahk], 11
- Ewmien**, *alt.* Iu Mien [ium], 15
- French** [fra], 14
- Ganai**, *alt.* Pacoh [pac], 22
- Gaolkheel**, *alt.* Akeu [aeu], 11
- Gazhuo**, *alt.* Kaduo [ktp], 16
- Gie**, *alt.* Jeh [jeh], 16
- Green Hmong**, *alt.* Hmong Njua [hnj], 15
- Green Meo**, *pej. alt.* Hmong Njua [hnj], 15
- Griang**, *alt.* Kriang [ngt], 18
- Guan**, *alt.* Kuan [uan], 18
- Gu-ba**, *alt.* Laopang [lbg], 19
- Ha Nhi**, *alt.* Hani [hni], 14
- Ha'aang**, *dial.* Ta'oih, Upper [tth], 27
- Haat**, *pej. alt.* O'du [tyh], 21
- Halak**, *alt.* Alak [alk], 11
- Halang**, *alt.* Halang [hal], 24
- Halang Doan** [hld], 14, 29
- Halang Duan**, *alt.* Halang Doan [hld], 14
- Hanhi**, *alt.* Hani [hni], 14
- Hani** [hni], 14, 29
- Hantong**, *alt.* Ong [oog], 21
- Hantong'**, *dial.* Ta'oih, Lower [tto], 27
- Harak**, *alt.* Alak [alk], 11
- Hareme**, *dial.* Maleng [pkt], 20
- Harème**, *alt.* Arem [aem], 11
- Harlak**, *alt.* Alak [alk], 11
- Hat**, *dial.* Khmu [kjpg], 17
pej. alt. O'du [tyh], 21
- Haw**, *alt.* Hani [hni], 14
- Hayi**, *alt.* Hani [hni], 14
- Highland Yao**, *alt.* Iu Mien [ium], 15
- Hin**, *alt.* Nyaheun [nev], 21
- Hka Ko**, *pej. alt.* Akha [ahk], 11
- Hmong Daw** [mww], 14, 29
- Hmong Der**, *alt.* Hmong Daw [mww], 14
- Hmong Gu Mba**, *dial.* Hmong Daw [mww], 14
- Hmong Leng**, *alt.* Hmong Njua [hnj], 15
- Hmong Njua** [hnj], 15, 29
- Hmong Nzhua**, *alt.* Hmong Njua [hnj], 15
- Hmong Qua Mba**, *alt. dial.* Hmong Daw [mww], 14
- Hmongb Nzhuab**, *alt.* Hmong Njua [hnj], 15
- Hmoob Dawb**, *alt.* Hmong Daw [mww], 14
- Hmoob Leeg**, *alt.* Hmong Njua [hnj], 15
- Hmoob Quas Npab**, *alt. dial.* Hmong Daw [mww], 14

- Hmoob Txaij Npab**, *alt. dial.* Hmong Daw [mww], 14
- Hoен**, *alt.* Nyaheun [nev], 21
- Hrlak**, *alt.* Alak [alk], 11
- Htin**, *alt.* Mal [mlf], 20
pej. alt. Prai [prt], 23
- Huei**, *alt.* Oy [oyb], 22
- Hun**, *alt.* Nyaheun [nev], 21
- Hung** [hnu], 15, 29
- Hwethom**, *dial.* Phunoi [pho], 23
- 'Iduh**, *alt.* O'du [tyh], 21
- Ikaw**, *pej. alt.* Akha [ahk], 11
- Ikor**, *alt.* Akha [ahk], 11
- In**, *alt.* Ir [irr], 15
- Inn Tea**, *dial.* Oy [oyb], 22
- Ir** [irr], 15, 29
- Iu Mien** [ium], 15, 29
- Iu Mienh**, *alt.* Iu Mien [ium], 15
- Jaru**, *alt.* Laven [lbo], 20
- Jeh** [jeh], 16, 29
- Jeh Bri La**, *dial.* Jeh [jeh], 16
- Jeh Mang Ram**, *dial.* Jeh [jeh], 16
- Jeng**, *dial.* Oy [oyb], 22
- Jim Mun**, *alt.* Kim Mun [mji], 17
- Jru**, *alt.* Laven [lbo], 20
- Jru'**, *alt.* Laven [lbo], 20
- Jruq**, *alt.* Laven [lbo], 20
- Jui**, *alt.* Yoy [yoy], 28
- Kado**, *alt.* Kaduo [ktp], 16
dial. Pacoh [pac], 22
- Kadu**, *alt.* Kaduo [ktp], 16
- Kaduo** [ktp], 16, 29
- Kaleu**, *alt. dial.* Bru, Eastern [bru], 12
- Kam Mueang**, *alt.* Thai, Northern [nod], 27
- Kamhmu**, *alt.* Khmu [kjpg], 17
- Kammu**, *alt.* Khmu [kjpg], 17
- Kamu**, *alt.* Khmu [kjpg], 17
- Kamuan'**, *dial.* Ta'oih, Upper [tth], 27
- Kang** [kyp], 16, 29
- Kantu**, *dial.* Katu, Western [kuf], 16
- Kaseng**, *alt.* Talieng [tdf], 26
- Kasseng**, *alt.* Talieng [tdf], 26
- Kataang**, *alt.* Katang, Northern [ncq], 16
- Kataang Rueal**, *alt.* Katang, Southern [sct], 16
- Katang**, *alt.* Katang, Northern [ncq], 16
alt. Katang, Southern [sct], 16
alt. Ta'oih, Upper [tth], 27
- Katang Phin**, *dial.* Katang, Northern [ncq], 16
- Katang Rueal**, *alt.* Katang, Southern [sct], 16
- Katang Ta'oioq**, *dial.* Ta'oih, Upper [tth], 27
- Katang, Northern** [ncq], 16, 29
see Katang, Northern [ncq], 16
- Katang, Southern** [sct], 16, 29
see Katang, Southern [sct], 16
- Katu, Western** [kuf], 16, 29
see Katu, Western [kuf], 16
- Kaw**, *pej. alt.* Akha [ahk], 11
- Kem di mun**, *alt.* Kim Mun [mji], 17
- Keneng**, *alt.* Phong-Kniang [pnx], 22
- Kenieng**, *alt.* Phong-Kniang [pnx], 22
- Kha Bet**, *alt.* Bit [bgk], 11
- Kha Bo**, *alt.* Bo [bgl], 12
- Kha Doy**, *pej. alt.* Tai Loi [tlq], 26
- Kha Lamet**, *alt.* Rmeet [lbn], 23
- Kha Niang**, *pej. alt.* Phong-Kniang [pnx], 22
- Kha Pai**, *pej. alt.* Sila [slt], 24
- Kha Pakatan**, *alt. dial.* Maleng [pkt], 20
- Kha Puhoc**, *pej. alt.* Puoc [puo], 18
- Kha So**, *pej. alt.* So [sss], 24
- Kha Tong Luang**, *alt.* Aheu [thm], 11
- Khabit**, *alt.* Bit [bgk], 11
- Khako**, *pej. alt.* Akha [ahk], 11
- Khamed**, *alt.* Rmeet [lbn], 23
- Khamen-Boran**, *alt.* Kuay [kdt], 18

- Khamet**, *alt.* Rmeet [lbn], 23
Khammouan, *dial.* Saek [skb], 23
Khamu, *alt.* Khmu [kjpg], 17
Khamuk, *alt.* Khmu [kjpg], 17
Khaniang, *pej. alt.* Phong-Kniang [pnx], 22
Khao Kha Ko, *pej. alt.* Akha [ahk], 11
Khaskhong, *dial.* Phunoi [pho], 23
Khatin, *alt.* Mal [mlf], 20
Khatu, *alt.* Kaduo [ktp], 16
Khbit, *alt.* Bit [bgk], 11
Khen Sang, *dial.* Oy [oyb], 22
Khiang, *alt.* Kriang [ngt], 18
Khlor, *dial.* Kriang [ngt], 18
Khmer [khm], 29
Khmer Islam, *alt.* Cham, Western [cja], 12
Khmu [kjpg], 17, 29
Khmu', *alt.* Khmu [kjpg], 17
Khomu, *alt.* Khmu [kjpg], 17
Khon Dak Chueng, *alt.* Talieng [tdf], 26
Khoun, *alt.* Khuen [khf], 17
Khroong, *dial.* Khmu [kjpg], 17
Khua [xhv], 17, 29
Khuen [khf], 17, 29
Khün [kkh], 17
Khween, *alt.* Khuen [khf], 17
Kim Mun [mji], 17
Kiorr [xko], 18, 29
Klor, *alt. dial.* Kriang [ngt], 18
Kmhmu, *alt.* Khmu [kjpg], 17
Ko, *pej. alt.* Akha [ahk], 11
Kongsang, *dial.* Oy [oyb], 22
Koseng, *alt.* Talieng [tdf], 26
Kouy, *alt.* Kuay [kdt], 18
Kranyeu, *dial.* Oy [oyb], 22
Kraseng, *alt.* Talieng [tdf], 26
Kri, *alt.* Arem [aem], 11
Kriang [ngt], 18, 29
Kriang Koh, *dial.* Kriang [ngt], 18
Kriang Tha Taeng, *dial.* Kriang [ngt], 18
Krong, *alt. dial.* Khmu [kjpg], 17
Kroong, *alt. dial.* Khmu [kjpg], 17
Ksing Mul [puo], 18, 29
Ksingmul, *alt.* Puoc [puo], 18
Kuan [uan], 18
Kuay [kdt], 18, 29
Kui, *alt.* Kuay [kdt], 18
alt. Lahu Shi [lhi], 19
Kui Lung, *alt.* Lahu Shi [lhi], 19
Kui Sang, *alt.* Lahu Shi [lhi], 19
Kuoy, *alt.* Kuay [kdt], 18
Kuriang, *alt.* Kriang [ngt], 18
Kuy, *alt.* Kuay [kdt], 18
Kween, *alt.* Khuen [khf], 17
Lad hur Si, *alt.* Lahu Shi [lhi], 19
Lahu [lhu], 19, 29
Lahu Phu, *alt. dial.* Lahu [lhu], 19
Lahu Shi, *alt.* Lahu Shi [lhi], 19
Lahu Si [lhi], 19
Lak-wi, *pej. alt.* Lavi [lvi], 20
Lamed, *alt.* Rmeet [lbn], 23
Lamet, *alt.* Rmeet [lbn], 23
Lan Na, *alt.* Thai, Northern [nod], 27
Lan Tin, *alt.* Kim Mun [mji], 17
Lanatai, *alt.* Thai, Northern [nod], 27
Lanna, *alt.* Thai, Northern [nod], 27
Lannatai, *alt.* Thai, Northern [nod], 27
Lanten, *alt.* Kim Mun [mji], 17
La-Nyao, *dial.* Oy [oyb], 22
Lao [lao], 19, 29
Lao Doi, *alt.* Tai Loi [tlq], 26
Lao Kang, *alt.* Khmu [kjpg], 17
Lao Mai, *alt.* Prai [prt], 23
Lao Muh, *alt.* Puoc [puo], 18
Lao Phong, *alt.* Phong-Kniang [pnx], 22

- Lao Phuan**, *alt.* Phuan [phu], 23
- Lao Prai**, *alt.* Prai [prt], 23
- Lao Terng**, *alt.* Khmu [kjg], 17
- Lao Wiang**, *alt.* Lao [lao], 19
- Lao-Kao**, *dial.* Lao [lao], 19
- Lao-Khrang**, *dial.* Lao [lao], 19
- Lao-Lum**, *alt.* Lao [lao], 19
- Lao-Noi**, *alt.* Lao [lao], 19
- Laopa**, *alt.* Laopang [lbg], 19
- Laopan**, *alt.* Laopang [lbg], 19
- Laopang** [lbg], 19
- Laos Sign Language** [lso], 19, 0
- Lao-Tai**, *alt.* Lao [lao], 19
- Laotian**, *alt.* Lao [lao], 19
- Laotian Tai**, *alt.* Lao [lao], 19
- Lave**, *alt.* Brao [brb], 12
- Laveh**, *alt.* Brao [brb], 12
- Laven** [lbo], 20, 29
- Lavi** [lvi], 20, 29
- Lavy**, *alt.* Lavi [lvi], 20
- Laweenjru**, *alt.* Laven [lbo], 20
- Lawi**, *alt.* Lavi [lvi], 20
- Leem**, *dial.* Ta'oih, Upper [tth], 27
- Lemet**, *alt.* Rmeet [lbn], 23
- Leun**, *dial.* Bru, Eastern [bru], 12
- Leung**, *alt. dial.* Bru, Eastern [bru], 12
- Lii**, *alt. dial.* Khmu [kjg], 17
- Loi**, *alt.* Tai Loi [tlq], 26
- Lor**, *alt. dial.* Kriang [ngt], 18
- Love**, *alt.* Brao [brb], 12
- Loven**, *alt.* Laven [lbo], 20
- Lower Lamet**, *dial.* Rmeet [lbn], 23
- Lowland Yao**, *alt.* Kim Mun [mji], 17
- Lu**, *alt.* Lü [khb], 20
- Lü** [khb], 20, 29
- Lu Miao**, *alt.* Hmong Njua [hnj], 15
- Lua Prai**, *alt.* Prai [prt], 23
- Luang Prabang**, *dial.* Khmu [kjg], 17
dial. Lao [lao], 19
- Lue**, *alt.* Lü [khb], 20
- Lum Lao**, *alt.* Lao [lao], 19
- Lyy**, *alt. dial.* Khmu [kjg], 17
- Ma Ku**, *alt.* Mlabri [mra], 20
- Mabri**, *alt.* Mlabri [mra], 20
- Ma'di**, *alt.* Mal [mlf], 20
- Madl**, *alt.* Mal [mlf], 20
- Makong**, *alt.* So [sss], 24
- Mal** [mlf], 20, 29
- Malang**, *alt.* Maleng [pkt], 20
dial. Maleng [pkt], 20
- Maleng** [pkt], 20, 29
dial. Maleng [pkt], 20
- Malieng**, *alt.* Maleng [pkt], 20
- Man**, *alt.* Iu Mien [ium], 15
- Man Lan-Tien**, *alt.* Kim Mun [mji], 17
- Man Thanh**, *alt.* Tai Daeng [tyr], 25
- Mang Cong**, *alt.* So [sss], 24
- Mangkong**, *alt.* So [sss], 24
- Mang-Koong**, *alt.* So [sss], 24
- Mankoong**, *alt.* So [sss], 24
- May**, *alt.* Chut [scb], 13
dial. Chut [scb], 13
- Meo Dam**, *pej. alt.* Hmong Njua [hnj], 15
- Meo Kao**, *pej. alt.* Hmong Daw [mww], 14
- Meo Lai**, *pej. alt.* Hmong Njua [hnj], 15
- Mien**, *alt.* Iu Mien [ium], 15
- Mienh**, *alt.* Iu Mien [ium], 15
- Mla**, *alt.* Mlabri [mra], 20
- Mlabri** [mra], 20, 29
- Mla-Bri**, *alt.* Mlabri [mra], 20
- Mong Leng**, *alt.* Hmong Njua [hnj], 15
- Mong Njua**, *alt.* Hmong Njua [hnj], 15
- Mong Ntsua**, *alt.* Hmong Njua [hnj], 15
- Monglwe**, *alt.* Tai Loi [tlq], 26

- Moob Leeg**, *alt.* Hmong Njua [hnj], 15
Mou, *alt.* Khmu [kɲg], 17
Mrabri, *alt.* Mlabri [mra], 20
Muang, *alt.* Thai, Northern [nod], 27
Mueang, *alt.* Thai, Northern [nod], 27
Mueay, *alt. dial.* Tai Daeng [tyr], 25
Muhso, *alt.* Lahu [lhu], 19
Mun, *alt.* Kim Mun [mji], 17
Mung, *dial.* Phunoi [pho], 23
Museu, *alt.* Lahu [lhu], 19
Musso, *alt.* Lahu [lhu], 19
Mussur, *alt.* Lahu [lhu], 19
Myang, *alt.* Thai, Northern [nod], 27
Myen, *alt.* Iu Mien [ium], 15
Na Kadok, *dial.* Saek [skb], 23
Na Nhyang, *dial.* Kuay [kdt], 18
Nan, *dial.* Thai, Northern [nod], 27
Ngae, *alt.* Kriang [ngt], 18
Nge, *alt.* Kriang [ngt], 18
Nge', *alt.* Kriang [ngt], 18
Ngeh, *alt.* Kriang [ngt], 18
Ngeq, *alt.* Kriang [ngt], 18
Ngkriang, *alt.* Kriang [ngt], 18
Ngoaun [nuo], 21, 29
Nguan, *alt.* Nguôn [nuo], 21
Nguane, *alt.* Nguôn [nuo], 21
Nguôn, *alt.* Nguôn [nuo], 21
Nha Heun, *alt.* Nyaheun [nev], 21
Nhae, *alt.* Kriang [ngt], 18
Nhang, *alt.* Bouyei [pcc], 28
Nia Hoen, *alt.* Nyaheun [nev], 21
Niahon, *alt.* Nyaheun [nev], 21
Nkriang, *alt.* Kriang [ngt], 18
Nong, *alt.* Nung [nut], 21
Nung [nut], 21
Nyah Heuny, *alt.* Nyaheun [nev], 21
Nyaheun [nev], 21, 29
Nyahön, *alt.* Nyaheun [nev], 21
Nyang, *alt.* Bouyei [pcc], 28
O Du, *alt.* O'du [tyh], 21
O'du [tyh], 21, 29
Oedou, *alt.* O'du [tyh], 21
Oey, *alt.* Oy [oyb], 22
Oi, *alt.* Oy [oyb], 22
Oi-Sok, *alt.* Oy [oyb], 22
Old Khmer, *alt.* Kuay [kdt], 18
Ong [oog], 21, 29
Oy [oyb], 22, 29
Pa Co, *alt.* Pacoh [pac], 22
Paco, *alt.* Pacoh [pac], 22
Pacoh [pac], 22, 29
Pahi, *dial.* Pacoh [pac], 22
Pai-I, *alt.* Lü [khh], 20
Pakatan, *dial.* Maleng [pkt], 20
Pako, *alt.* Pacoh [pac], 22
Pakse, *dial.* Lao [lao], 19
Palau, *dial.* Brao [brb], 12
Palee'n, *dial.* Ta'oih, Upper [tth], 27
Pana', *alt.* Phana' [phq], 22
Pasing, *alt.* Bit [bgk], 11
Pasoom, *dial.* Ta'oih, Upper [tth], 27
Phai, *alt.* Prai [prt], 23
Phana' [phq], 22, 29
Phon Sung, *alt.* Aheu [thm], 11
Phong, *dial.* Hung [hnu], 15
Phong-Kniang [pnx], 22, 29
Phonsung, *alt.* Aheu [thm], 11
Phòngq, *dial.* Arem [aem], 11
Phou Lao, *alt.* Lao [lao], 19
Phounoy, *alt.* Phunoi [pho], 23
Phsin, *alt.* Bit [bgk], 11
Phsing, *alt.* Bit [bgk], 11
Phu Noi, *alt.* Phunoi [pho], 23
Phu Thai [pht], 22, 29

- Phu Un**, *alt.* Phuan [phu], 23
- Phuan** [phu], 23, 29
- Phunoi** [pho], 23, 29
- Phutai**, *alt.* Phu Thai [pht], 22
- Poko**, *alt.* Pacoh [pac], 22
- Pokoh**, *alt.* Pacoh [pac], 22
- Pong**, *alt. dial.* Hung [hnu], 15
alt. Phong-Kniang [pnx], 22
- Pong 1**, *alt. dial.* Hung [hnu], 15
- Pong 2**, *alt. dial.* Hung [hnu], 15
- Poong**, *alt. dial.* Hung [hnu], 15
- Pou Hok**, *alt.* Puoc [puo], 18
- Pouteng**, *alt.* Khmu [kjg], 17
- Prai** [prt], 23, 29
- Proue**, *alt.* Brao [brb], 12
- Pu Sing**, *alt.* Bit [bgk], 11
- Pu Thenh**, *alt.* Khmu [kjg], 17
- Puhoc**, *alt.* Puoc [puo], 18
- Punoi**, *alt.* Phunoi [pho], 23
- Puoc**, *pej. alt.* Puoc [puo], 18
- Puok**, *pej. alt.* Puoc [puo], 18
- Putai**, *alt.* Phu Thai [pht], 22
- Puthay**, *alt.* Phu Thai [pht], 22
- Qing Miao**, *alt.* Hmong Njua [hnj], 15
- Rawe**, *alt.* Brao [brb], 12
- Red Thai**, *alt.* Tai Daeng [tyr], 25
- Riyao**, *dial.* Oy [oyb], 22
- Rmeet** [lbn], 23, 29
- Rok**, *dial.* Khmu [kjg], 17
- Rong Kong**, *alt.* Lao [lao], 19
- Ruc**, *alt.* Chut [scb], 13
dial. Chut [scb], 13
- Saamtaav**, *alt.* Kiorr [xko], 18
- Sa'ang**, *alt. dial.* Ta'oih, Upper [tth], 27
- Sach**, *alt.* Chut [scb], 13
- Saek** [skb], 23, 29
- Salang** [hal], 24, 29
alt. Chut [scb], 13
- Salwoeng**, *alt.* Lavi [lvi], 20
- Samtao** [stu], 24
alt. Kiorr [xko], 18
- Samtao II**, *alt.* Kiorr [xko], 18
- Samtau**, *alt.* Samtao [stu], 24
- Samtuan**, *alt.* Samtao [stu], 24
- Sapouan**, *alt.* Sapuan [spu], 24
- Sapuan** [spu], 24, 29
- Savannakhet**, *dial.* Lao [lao], 19
- Saveung**, *alt.* Lavi [lvi], 20
- Sawk**, *alt. dial.* Oy [oyb], 22
alt. Sou [sqq], 25
- Sayabury**, *dial.* Khmu [kjg], 17
- Seak**, *alt.* Saek [skb], 23
- Sedang** [sed], 24
- Sek**, *alt.* Saek [skb], 23
- Set**, *alt.* Saek [skb], 23
- Shui-Pai-I**, *alt.* Lü [khh], 20
- Sida**, *alt.* Sila [slt], 24
- Sila** [slt], 24, 29
- Singsily**, *alt.* Phunoi [pho], 23
- Sinsali**, *alt.* Phunoi [pho], 23
- So** [sss], 24, 29
alt. Aheu [thm], 11
- Sô**, *alt.* So [sss], 24
- So Makon**, *alt.* So [sss], 24
- So Phong**, *dial.* So [sss], 24
- So Slouy**, *dial.* So [sss], 24
- So Tri**, *alt. dial.* Bru, Eastern [bru], 12
- So Trii**, *alt. dial.* Bru, Eastern [bru], 12
- So Trong**, *dial.* So [sss], 24
- Soai**, *alt.* Kuay [kdt], 18
- Soay**, *alt.* Kuay [kdt], 18
- Soei**, *alt.* Kuay [kdt], 18
- Sok**, *dial.* Oy [oyb], 22

- Sork**, *alt. dial.* Oy [oyb], 22
- Sou** [sqq], 25, 29
- Souai**, *alt.* Kuay [kdt], 18
- Souei**, *alt.* Kuay [kdt], 18
- Souk**, *alt.* Sou [sqq], 25
- Striped Hmong**, *alt. dial.* Hmong Daw [mww], 14
- Su**, *alt.* Sou [sqq], 25
- Su'**, *alt.* Sou [sqq], 25
- Suai**, *alt.* Kuay [kdt], 18
- Suay**, *alt.* Kuay [kdt], 18
- Suei**, *alt.* Kuay [kdt], 18
- Sui**, *alt.* Kuay [kdt], 18
- Suoi**, *alt.* Kuay [kdt], 18
- Suq**, *alt.* Sou [sqq], 25
- Swoeng**, *alt.* Lavi [lvi], 20
- Ta Hoi**, *alt.* Ta'oih, Upper [tth], 27
- Tai Blanc**, *alt.* Tai Dón [twh], 25
- Tai Bo**, *alt.* Bo [bgl], 12
- Tai Daeng** [tyr], 25, 29
- Tai Dam** [blt], 25, 29
- Tai Deng**, *alt.* Tai Daeng [tyr], 25
- Tai Do**, *alt.* Tai Yo [tyj], 26
- Tai Doi**, *alt.* Tai Loi [tlq], 26
- Tai Dón** [twh], 25, 29
- Tai Guan**, *alt.* Kuan [uan], 18
- Tai Kang**, *alt.* Tai Khang [tnu], 25
- Tai Kao**, *alt.* Tai Dón [twh], 25
- Tai Khang** [tnu], 25, 29
alt. Kang [kyp], 16
- Tai Khao**, *alt.* Tai Dón [twh], 25
- Tai Khouan**, *alt.* Kuan [uan], 18
- Tai Kouane**, *alt.* Kuan [uan], 18
- Tai Kuan**, *alt.* Kuan [uan], 18
- Tai Kwan**, *alt.* Kuan [uan], 18
- Tai Lai**, *alt.* Tai Dón [twh], 25
- Tai Lao**, *alt.* Lao [lao], 19
- Tai Loi** [tlq], 26, 29
dial. Tai Loi [tlq], 26
- Tai Long** [thi], 26
- Tai Maen**, *alt.* Tai Yo [tyj], 26
- Tai Man**, *alt.* Tai Yo [tyj], 26
- Tai Men**, *alt.* Tai Yo [tyj], 26
- Tai Mene**, *alt.* Tai Yo [tyj], 26
- Tai Mène**, *alt.* Tai Yo [tyj], 26
- Tai Mènè**, *alt.* Tai Yo [tyj], 26
- Tai Meuay**, *dial.* Tai Daeng [tyr], 25
- Tai Meuy**, *alt. dial.* Tai Daeng [tyr], 25
- Tai Mueai**, *alt. dial.* Tai Daeng [tyr], 25
- Tai Muei**, *alt. dial.* Tai Daeng [tyr], 25
- Tai Neua**, *alt.* Tai Nüa [tdd], 26
- Tai Nhai**, *alt.* Tai Daeng [tyr], 25
- Tai Noir**, *alt.* Tai Dam [blt], 25
- Tai Nüa** [tdd], 26, 29
- Tai Nuea**, *alt.* Tai Nüa [tdd], 26
- Tai Pao** [tpo], 26, 29
- Tai Sek**, *alt.* Saek [skb], 23
- Tai Yo** [tyj], 26, 29
- Tailoi**, *alt.* Tai Loi [tlq], 26
- Tai-Maen**, *alt.* Tai Yo [tyj], 26
- Tak Miao**, *alt.* Hmong Njua [hnj], 15
- Taliang**, *alt.* Talieng [tdf], 26
- Talieng** [tdf], 26, 29
- Tamal Euy**, *dial.* Oy [oyb], 22
- Ta-Oi**, *alt.* Ta'oih, Upper [tth], 27
- Ta'oih, Lower** [tto], 27, 29
see Ta'oih, Lower [tto], 27
- Ta'oih, Upper** [tth], 27, 29
see Ta'oih, Upper [tth], 27
- Ta-oiq**, *alt.* Ta'oih, Upper [tth], 27
- Ta'oiq**, *alt.* Ta'oih, Upper [tth], 27
- Ta-Oy**, *alt.* Ta'oih, Upper [tth], 27
- Tareng** [tgr], 27, 29

- Tariang**, *alt.* Talieng [tdf], 26
alt. Tareng [tgr], 27
- Tarieng**, *alt.* Talieng [tdf], 26
- Tau Oi**, *alt.* Ta'oih, Upper [tth], 27
- Tay Chieng**, *alt.* Tai Khang [tnu], 25
- Táy Đăm**, *alt.* Tai Dam [blt], 25
- Tãy Đón**, *alt.* Tai Dón [twh], 25
- Tay Hat**, *pej. alt.* O'du [tyh], 21
- Tay Khang**, *alt.* Tai Khang [tnu], 25
- Tenh**, *alt.* Khmu [kjg], 17
- Thae**, *alt.* Oy [oyb], 22
- Thai Dang**, *alt.* Tai Daeng [tyr], 25
- Thai Den**, *alt.* Tai Dam [blt], 25
- Thai Do**, *alt.* Tai Daeng [tyr], 25
- Thái Tráng**, *alt.* Tai Dón [twh], 25
- Thai, Northern** [nod], 27, 29
see Thai, Northern [nod], 27
- Thaineau**, *alt.* Tai Nüa [tdd], 26
- Thavung**, *alt.* Aheu [thm], 11
- Thay Bo**, *alt.* Bo [bgl], 12
- The**, *alt.* Oy [oyb], 22
dial. Oy [oyb], 22
- Theng**, *alt.* Khmu [kjg], 17
- Thin**, *alt.* Mal [mlf], 20
- Thro**, *alt.* So [sss], 24
- Tin**, *alt.* Mal [mlf], 20
- T'in**, *alt.* Mal [mlf], 20
- Tjam**, *alt.* Cham, Western [cja], 12
- Tong**, *alt.* Ong [oog], 21
alt. Ta'oih, Lower [tto], 27
dial. Ta'oih, Lower [tto], 27
- Toum**, *dial.* Hung [hnu], 15
- Tri**, *dial.* Bru, Eastern [bru], 12
- Triang**, *alt.* Talieng [tdf], 26
- Trieng**, *alt.* Talieng [tdf], 26
- Triw**, *dial.* Katu, Western [kuf], 16
- Tscham**, *alt.* Cham, Western [cja], 12
- Tsiam**, *alt.* Cham, Western [cja], 12
- Tum**, *alt. dial.* Hung [hnu], 15
- U**, *dial.* Khmu [kjg], 17
- Umo**, *alt.* Arem [aem], 11
- Upper Lamet**, *dial.* Rmeet [lbn], 23
- Uu**, *alt. dial.* Khmu [kjg], 17
- Vientiane**, *dial.* Lao [lao], 19
- Wakut**, *alt.* Tai Loi [tlq], 26
- White Hmong**, *alt.* Hmong Daw [mww], 14
- White Khoany**, *dial.* Phunoi [pho], 23
- White Lahu**, *dial.* Lahu [lhu], 19
- White Lum**, *alt.* Hmong Daw [mww], 14
- White Meo**, *pej. alt.* Hmong Daw [mww], 14
- White Miao**, *alt.* Hmong Daw [mww], 14
- White Tai**, *alt.* Tai Dón [twh], 25
- Wiang Jan**, *alt. dial.* Lao [lao], 19
- Xaek**, *alt.* Saek [skb], 23
- Xec**, *alt.* Saek [skb], 23
- Xek**, *alt.* Saek [skb], 23
- Xin Mul**, *alt.* Puoc [puo], 18
- Xing Mun**, *alt.* Puoc [puo], 18
- Xingmoun**, *alt.* Puoc [puo], 18
- Xinh Mul**, *alt.* Puoc [puo], 18
- Xinh Mun**, *alt.* Puoc [puo], 18
- Xuay**, *alt.* Kuay [kdt], 18
- Xuoi**, *alt.* Kuay [kdt], 18
- Yae**, *alt.* Jeh [jeh], 16
- Yaeh**, *alt.* Jeh [jeh], 16
- Yaheun**, *alt.* Nyaheun [nev], 21
- Yang** [pcc], 28, 29
- Yani**, *alt.* Akha [ahk], 11
- Yao**, *alt.* Iu Mien [ium], 15
- Yao Mienh**, *alt.* Iu Mien [ium], 15
- Yeh**, *alt.* Jeh [jeh], 16
- Yellow Lahu**, *alt.* Lahu Shi [lhi], 19
- Yellow Leaf**, *alt.* Mlabri [mra], 20
- Yiir**, *alt.* Ir [irr], 15

Yir, *alt.* Ir [irr], 15

Yoi, *alt.* Yoy [yoy], 28

Yooi, *alt.* Yoy [yoy], 28

Yooy, *alt.* Yoy [yoy], 28

Youanne, *pej. alt.* Thai, Northern [nod], 27

Youon, *pej. alt.* Thai, Northern [nod], 27

Yoy [yoy], 28, 29

Yrou, *alt.* Laven [lbo], 20

Yuan, *dial.* Khmu [kjg], 17

pej. alt. Thai, Northern [nod], 27

Yumbri, *alt.* Mlabri [mra], 20

Bibliography

- Asian Minorities Outreach. 1999b. *Faces of the unreached in Laos, Southeast Asia's forgotten nation*. Chiang Mai: Asian Minorities Outreach Publishing.
- Badenoch, N. and N. Hayashi. 2017. Phonological sketch of the Sida language of Luang Namtha, Laos. *Journal of the Southeast Asian Linguistics Society* 10(1):1–15.
- Bradley, D. 2007a. East and Southeast Asia. In C. Moseley (ed.), *Encyclopedia of the world's endangered languages*, pp. 349–424. London: Routledge.
- Bradley, D. 2007b. Languages of Mainland South-East Asia. In O. Miyaoka, O. Sakiyama, and M. E. Krauss (eds.), *The vanishing languages of the Pacific Rim*, pp. 301–336. Oxford Linguistics. Oxford: Oxford University Press.
- Chazée, L. 1999. *The peoples of Laos: Rural and ethnic diversities*. Bangkok: White Lotus Press.
- Edmondson, J. A. and D. Solnit (eds.). 1997. *Comparative Kadai: The Tai branch*. Publications in Linguistics 124. Dallas: Summer Institute of Linguistics and the University of Texas at Arlington.
- Enfield, N. J. and G. Diffloth. 2009. Phonology and sketch grammar of Kri, a Vietic language of Laos. *Cahiers de Linguistique - Asie Orientale* 38(1):3–69.
- Ferlus, M. 1996. Langues et peuples viet-muong. *Mon-Khmer Studies* 16:7–28.
- Hattaway, P. 2003. *Operation China, Introducing all the peoples of China* Pasedena: William Carey Library.
- Lebar, F. M., G. C. Hickey, and J. K. Musgrave. 1964. *Ethnic groups of mainland Southeast Asia*. New Haven: Human Relations Area Files Press.
- Lewis, M. P. and G. F. Simons. 2010. Assessing endangerment: Expanding Fishman's GIDS. *Revue Roumaine de Linguistique* 55(2):103–120. http://www.lingv.ro/RRL_2_2010_art01Lewis.pdf. Accessed 11 January 2011.
- Marcoux, R., L. Richard and A. Wolff. 2022. *Estimation des francophones dans le monde en 2022: Sources et démarches méthodologiques*. Note de recherche de l'ODSEF, Québec, Mars 2022. Quebec: Université Laval, Observatoire démographique et statistique de l'espace francophone.
- Matisoff, J. A., S. P. Baron, and J. B. Lowe. 1996. *Languages and dialects of Tibeto-Burman*. Sino-Tibetan Etymological Dictionary and Thesaurus Monograph Series, no. 2. Berkeley: University of California Press.
- Schliesinger, J. 2003a. *Ethnic groups of Laos, vol. 3: Profile of Austro-Thai speaking peoples*. Bangkok: White Lotus Press.
- Schliesinger, J. 2003b. *Ethnic groups of Laos, vol. 2: Profile of Austro-Asiatic speaking peoples*. Bangkok: White Lotus Press.

- Schliesinger, J. 2003c. *Ethnic groups of Laos, vol. 4: Sino-Tibetan speaking peoples*. Bangkok: White Lotus Press.
- Schliesinger, J. 2003d. *Ethnic groups of Laos, vol. 1: Introduction and Overview*. Bangkok: White Lotus Press.
- Sidwell, P. and P. Jacq. 2003. *A handbook of comparative Bahnaric, vol. 1: West Bahnaric*. Pacific Linguistics 551. Canberra: Pacific Linguistics.
- Svantesson, J. and A. Holmer. 2015. Kammu. In M. Jenny and P. Sidwell (eds.), *The handbook of Austroasiatic languages*, pp. 955–1002. Leiden: Brill.
- Thomas, D. D. and R. K. Headley, Jr. 1970. More on Mon-Khmer subgroupings. *Lingua* 25:398–418.
- Wurm, S. A. and S. Hattori (eds.). 1981. *Language atlas of the Pacific area*. Canberra: The Australian Academy of the Humanities in collaboration with the Japan Academy.