

# Ethnologue: Languages of Luxembourg

## Twenty-sixth edition data

David M. Eberhard, Gary F. Simons, and Charles D. Fennig, Editors

Based on information from the *Ethnologue*, 26th edition:

Eberhard, David M., Gary F. Simons, and Charles D. Fennig (eds.). 2023.  
*Ethnologue: Languages of the World*. Twenty-sixth edition. Dallas, Texas:  
SIL International. Online: <http://www.ethnologue.com>.

*For personal use only*

Permission to distribute or reuse this work (in whole or in part)  
may be obtained through the Copyright Clearance Center at  
<http://www.copyright.com>.

## Contents

List of Abbreviations	3
How to Use This Digest	4
Country Overview	6
Language Status Profile	7
Statistical Summaries	8
Alphabetical Listing of Languages	10
Language Map	18
Languages by Population	19
Languages by Status	22
Languages by Family	25
Language Code Index	26
Language Name Index	27
Bibliography	28

Copyright © 2023 by SIL International

*All rights reserved.* No part of this publication may be reproduced, redistributed, or transmitted in any form or by any means—electronic, mechanical, photocopying, recording, or otherwise—without the prior written permission of SIL International, with the exception of brief excerpts in articles or reviews.

## List of Abbreviations

A	Agent in constituent word order
<i>alt.</i>	alternate name for
<i>alt. dial.</i>	alternate dialect name for
AOV	Agent-Object-Verb
C	Consonant in canonical syllable patterns
CDE	Convention against Discrimination in Education (1960)
<i>Class</i>	Language classification
CPPDCE	Convention on the Protection and Promotion of the Diversity of Cultural Expressions (2005)
CSICH	Convention for the Safeguarding of Intangible Cultural Heritage (2003)
DBS	Deaf Bible Society
<i>dial.</i>	primary dialect name for
DOOR	Deaf Opportunity Outreach
ECRML	European Charter for Regional or Minority Languages (1992)
ICCPR	International Covenant on Civil and Political Rights (1966)
km	kilometer(s)
L1 / L2	first language / second (or other additional) language
<i>Lg Dev</i>	Language development
<i>Lg Use</i>	Language use
m	meter(s)
P	Patient in constituent word order
PARADISEC	Pacific And Regional Archive for Digital Sources In Endangered Cultures
<i>pej.</i>	pejorative
pl.	plural
S	Subject in constituent word order
sg.	singular
SIL	SIL International
SVO	Subject-Verb-Object
<i>Type</i>	Typological information
UNCRPD	United Nations Convention on the Rights of Persons with Disabilities (2006)
UNDRIP	United Nations Declaration on the Rights of Indigenous Peoples (2007)
V	Vowel in canonical syllable patterns

## How to Use This Digest

This *Ethnologue* country digest provides an extract of the information about the language situation in Luxembourg that is published in the 26th edition of *Ethnologue: Languages of the World* (see <http://www.ethnologue.com>), including some ways of presenting the information that are not available in the online version. The digest begins with a “Country Overview” (page 6) and “Statistical Summaries” (page 8) of languages and number of speakers by language size, by language status, and by language family.

The “Alphabetical Listing of Languages” (page 10) provides detailed information on the 24 languages listed in the *Ethnologue* for the country of Luxembourg. This includes languages that are indigenous to the country, languages that have developed well-established multigenerational speaker communities after immigrating in the past, and languages that have a significant presence in the country but are not established (that is, not being transmitted to the next generation within the country). A complete language entry has the following form and content:

**Primary language name** [ISO 639-3 code] (Alternate names). Autonym. *Users*: Country user population. Population stability comment. Population remarks. Monolingual population. Ethnic population. *Location*: Location. *Status*: EGIDS level. Special cases. Language function in country. *Class*: Linguistic classification. Macrolanguage membership. *Dialects*: Dialect names. Intelligibility and dialect relations. Lexical similarity. *Type*: Linguistic typology information. *Lg Use*: Remarks on use of the language. Domains of use. User age range. Language attitudes. Bilingualism remarks. Use as second language. *Lg Dev*: Literacy rates. Literacy remarks. Use in education. Publications and use in media. Revitalization efforts. Language development agencies. *DLS*: Digital support. *Writing*: Scripts used. *Other*: Non-indigenous. General remarks. Religion. *Worldwide*: Total population in all countries. Other countries where used.

See <http://www.ethnologue.com/methodology/#languagePages> for a full description of these information elements. If the autonym contains the “?” character, this indicates a complex non-Roman character that the PDF-creating software we are using is not able to render. We regret the inconvenience.

Many ways of finding languages are provided. “Languages by Population” (page 19) lists the languages in order of their first-language speaker populations. “Languages by Status” (page 22) lists the languages by their level of development or endangerment as measured on EGIDS, the Expanded Graded Intergenerational Disruption Scale (Lewis and Simons 2010). “Languages by Family” (page 25) lists the languages by their linguistic classifications. “Language Code Index” (page 26) gives an alphabetical listing of all the three-letter codes from ISO 639-3 that are used in this digest to uniquely identify languages. “Language Name Index” (page 27) lists every name that appears in the language listings as a primary or alternate name of a language or dialect. A total of 25 unique names are associated with the 24 languages described in this digest.

Finally, a listing of all the published sources cited within this digest is found in “Bibliography”

(page 28). The published sources are cited using standard in-text citations enclosed in parentheses, consisting of the author's or editor's surname followed by the year of publication. Unpublished sources including personal communications and unpublished reports are also acknowledged when specific statements or facts are attributed to them. They are identified using in-text citations enclosed in parentheses in which the year of the communication is given first, followed by the source's first initial and surname. In such a case, there is no corresponding entry in the bibliography.

This digest is designed for use in both digital and print formats. The cross-references are thus rendered as page numbers that are hyperlinks. When using the document in printed form, simply turn to the referenced page by number. When using it in digital form, click on the blue text to jump to the cross-referenced location.

If you believe any of the information about a language in this digest is in error or if you are able to supply missing information, please send your proposed change to the editor using one of the means given below. Provide as much information as possible about the source of your information. Full bibliographic details of published sources are especially helpful.

The preferred method of submitting corrections and additions is to join our Contributor Program by applying at <http://www.ethnologue.com/contributor-program>. With a contributor account you will be entitled to complimentary access to the website and will be able to use the Contribute tab on the page for a language or country in order to propose corrections and additions. The advantage of giving feedback in this way is that it becomes part of the public record on the website. You will also be automatically notified of the editorial action.

Alternatively, you may submit corrections and additions by e-mail to:

Ethnologue\_Editor@sil.org

Or by post to:

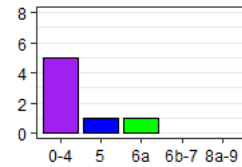
Editor, Ethnologue  
SIL International  
7500 West Camp Wisdom Road  
Dallas, TX 75236, U.S.A.

## Country Overview

Name of country	Luxembourg
Other names	Grand Duchy of Luxembourg
Population	635,000 (2021 Eurostat)
Principal languages	French, Standard German
Literacy rate	100% (Roser and Ortiz-Ospina 2018)
Deaf population	300
International conventions	CDE (1970), CPPDCE (2006), CSICH (2006), ECRML (2005), ICCPR (1983), UNCRPD (2011), UNDRIP (2007)
General references	Stephens 1976

Language counts

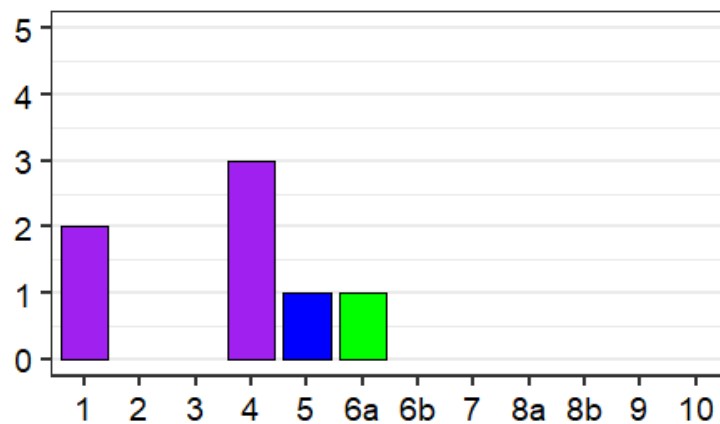
The number of established languages listed for Luxembourg is 7. All are living languages. Of these, 2 are indigenous and 5 are non-indigenous. Furthermore, 5 are institutional, 1 is developing, and 1 is vigorous. Also listed are 17 unestablished languages.



See the next page for an explanation of the summary categories for language vitality used in the above counts and graph.

## Language Status Profile

The following histogram gives a graphic profile of the established languages in Luxembourg with respect to their status of language development versus language endangerment. This includes all of the languages appearing in the “Alphabetical Listing of Languages” (page 10) that report an EGIDS level after *Status*; macrolanguages and unestablished languages are not included in the profile. The horizontal axis plots the estimated level of development or endangerment as measured on the EGIDS scale (Lewis and Simons 2010). The height of each bar indicates the number of languages that are estimated to be at the given level. Consult “Languages by Status” (page 22) in order to see the specific languages for each level.



The color coding of the bars in the histogram above matches the color scheme used in the summary profile graph on the preceding page. In this scheme, the EGIDS levels are grouped as follows:

- Purple = Institutional (EGIDS 0–4) — The language has been developed to the point that it is used and sustained by institutions beyond the home and community.
- Blue = Developing (EGIDS 5) — The language is in vigorous use, with literature in a standardized form being used by some though this is not yet widespread or sustainable.
- Green = Vigorous (EGIDS 6a) — The language is in vigorous use among all generations and remains unstandardized.
- Yellow = In trouble (EGIDS 6b–7) — Intergenerational transmission is in the process of being broken, but the child-bearing generation can still use the language so it is possible that revitalization efforts could restore transmission of the language in the home.
- Red = Dying (EGIDS 8a–9) — The only fluent users (if any) are older than child-bearing age, so it is too late to restore natural intergenerational transmission through the home; a mechanism outside the home would need to be developed.
- Black = Extinct (EGIDS 10) — The language is no longer used and no one retains a sense of ethnic identity associated with the language.

## Statistical Summaries

The “Alphabetical Listing of Languages” (page 10) provides a detailed listing of all the languages of Luxembourg. This section steps back from the detail to offer a summary view of the language situation in the country. Specifically, it offers three numerical tabulations of the living established languages of Luxembourg and their users: by language size, by language status, and by language family.

### Summary by language size

Table 1 summarizes the distribution of living established languages in Luxembourg by number of L1 speakers. The *Population range* column categorizes the sizes of the languages by order of magnitude (in terms of the number of digits in the population of first-language speakers). Consult “Languages by Population” (page 19) for a listing of the specific languages in each range category.

The *Count* column gives the number of living established languages within the specified population range. The *Percent* column gives the share of the count for that population range as a percentage of the total number of languages given at the bottom of the Count column. The *Cumulative* column gives the cumulative sum of the percentage of languages going from top to bottom in the column.

The *Total* column gives the total L1 population of all the languages in the given range category. The second *Percent* column gives the percentage of the total country population as estimated at the bottom of the Total column. Note that if the table has a row for Unknown, representing languages for which the *Ethnologue* does not have a population estimate, the calculation of population percentage is not able to take those languages into account. The final *Cumulative* column gives the cumulative sums of the population percentages going from top to bottom in the column.

**Table 1:** Distribution of languages by number of first-language speakers

Population range	Living languages			Number of speakers		
	Count	Percent	Cumulative	Total	Percent	Cumulative
100,000 to 999,999	2	28.6	28.6%	432,000	78.86090	78.86090%
10,000 to 99,999	3	42.9	71.4%	109,800	20.04381	98.90471%
1,000 to 9,999	1	14.3	85.7%	5,400	0.98576	99.89047%
100 to 999	1	14.3	100.0%	600	0.10953	100.00000%
<i>Totals</i>	7	100.0		547,800	100.00000	

### Summary by language status

Table 2 summarizes the distribution of living established languages in Luxembourg by their status in terms of language development or language endangerment. The *EGIDS* column categorizes the

languages by their level on the EGIDS scale. Consult “Languages by Status” (page 22) for a listing of the specific languages that have been assigned to each level. Note that the EGIDS level reported here is for the status of the language in Luxembourg. Languages that are also used in other countries may be assigned to a different EGIDS level in those countries.

The next six columns are as in Table 1. In addition, the *Mean* column gives the average L1 population of all the languages with the given EGIDS level and the *Median* column gives the median L1 population for the languages at that level, that is, half of the languages at that level have a higher population and half have a lower population. If there are any languages with an unknown population, these are ignored in the calculation of the mean and the median.

**Table 2:** Distribution of languages by vitality status

EGIDS	Living languages			Number of speakers			<i>Mean</i>	<i>Median</i>
	<i>Count</i>	<i>Percent</i>	<i>Cumulative</i>	<i>Total</i>	<i>Percent</i>	<i>Cumulative</i>		
1	2	28.6	28.6%	96,500	17.6159	17.6159%	48,250	48,250
4	3	42.9	71.4%	348,700	63.6546	81.2705%	116,233	13,300
5	1	14.3	85.7%	102,000	18.6199	99.8905%	102,000	102,000
6a	1	14.3	100.0%	600	0.1095	100.0000%	600	600
<i>Totals</i>	7	100.0		547,800	100.0000			

### Summary by language family

The genealogical classifications given in the language entries of the “Alphabetical Listing of Languages” (page 10) name 2 different top-level groups. Table 3 summarizes the distribution of living established languages and their L1 populations within these families. The columns are as for table 2, with the exception that *Cumulative* is excluded since there is no inherent ordering of the families.

**Table 3:** Distribution of languages by language family

Language family	Living languages		Number of speakers			
	<i>Count</i>	<i>Percent</i>	<i>Total</i>	<i>Percent</i>	<i>Mean</i>	<i>Median</i>
Indo-European	6	85.7	547,200	99.9	91,200	48,250
Sign language	1	14.3	600	0.1	600	600
<i>Totals</i>	7	100.0	547,800	100.0		

## Alphabetical Listing of Languages

- Albanian, Tosk** [als]. Autonym: Shqip. *Users*: 1,330 in Luxembourg (2021). *Status*: Unestablished. *Class*: Indo-European, Albanian, Tosk. *Type*: SVO; prepositions; noun head initial; gender (masculine/feminine/neuter); definite article affix; case-marking (4 cases); verb affixes mark person, number; passives; tense; 29 consonant and 7 vowel phonemes; non-tonal; stress on penultimate syllable. *Lg Dev*: Fully developed. NT: 1827–2007. *Writing*: Elbasan script, no longer in use. Greek script, no longer in use. Latin script. *Other*: Non-indigenous. *Worldwide*: Total users in all countries: 1,924,600 (as L1: 1,918,600; as L2: 6,000). Global EGIDS level: 1 (National). Indigenous in: Albania, Greece. Also established in: Turkey. Unestablished in: Australia, Belgium, Canada, Croatia, Finland, Germany, North Macedonia, Spain, Sweden, Ukraine, United Kingdom, United States.
- Arabic, Levantine** [apc]. *Users*: 7,600 in Luxembourg (Leclerc 2021b). *Status*: Unestablished. *Class*: Afro-Asiatic, Semitic, Central, South, Arabic. *Lg Dev*: Radio. TV. Dictionary. Grammar. Bible portions: 1940–1973. *Writing*: Arabic script, Naskh variant. *Other*: Non-indigenous. *Worldwide*: Total users in all countries: 47,595,360 (as L1: 47,236,360; as L2: 359,000). Global EGIDS level: 3 (Wider communication). Indigenous in: Israel, Jordan, Lebanon, Palestine, Syria, Turkey. Also established in: Mexico. Unestablished in: Argentina, Australia, Austria, Belgium, Brazil, Burundi, Canada, Côte d’Ivoire, Cyprus, Democratic Republic of the Congo, Denmark, Dominican Republic, Ecuador, Egypt, El Salvador, Finland, France, French Guiana, Gambia, Germany, Guinea, Honduras, Hungary, Indonesia, Iraq, Ireland, Jamaica, Kuwait, Libya, Malaysia, Martinique, Morocco, Netherlands, New Zealand, Nicaragua, Nigeria, Norway, Oman, Panama, Portugal, Qatar (North Levantine Spoken Arabic), Saudi Arabia (North Levantine Spoken Arabic), Senegal, Serbia, Sierra Leone, Spain, Sudan, Suriname, Sweden, Switzerland, Togo, Trinidad and Tobago, Tunisia, United Arab Emirates, United Kingdom, United States, Venezuela, Yemen.
- Bosnian** [bos]. *Users*: 2,610 in Luxembourg (2021). *Status*: Unestablished. *Class*: Indo-European, Balto-Slavic, Slavic, South, Western. *Type*: SVO; prepositions; gender (masculine/feminine/neuter); vestiges of dual number; case-marking (7 cases); verb affixes mark person, number, gender of subject (in past tense); passives; tense and aspect; 25 consonant and 5 vowel phonemes; pitch stress. *Lg Dev*: Dictionary. Bible: 2013–2021. *Writing*: Arabic script, Naskh variant, no longer in use. Cyrillic script. Latin script. *Other*: Non-indigenous. *Worldwide*: Total users in all countries: 2,618,390 (as L1: 2,608,490; as L2: 9,900). Global EGIDS level: 1 (National). Indigenous in: Bosnia and Herzegovina, Montenegro. Also established in: Croatia, North Macedonia, Serbia, Slovenia. Unestablished in: Australia, Austria, Canada, Czechia, Denmark, Finland, Germany, Italy, Norway, Spain, Sweden, Turkey, United States.
- Chinese, Mandarin** [cmn]. *Users*: 2,290 in Luxembourg (2021). Mandarin Chinese and Yue Chinese (Cantonese) [yue]. *Status*: Unestablished. *Class*: Sino-Tibetan, Chinese. *Type*: SVO; prepositions; noun head final; 6 full (concrete meaning) word classes; no articles; passives; 24

consonants, 8 vowels, 6 diphthongs; tonal (4 phonemic tones). *Lg Dev*: Taught as subject in secondary schools. Fully developed. Bible: 1874–1983. *Writing*: Bopomofo script, used since 1913, revised in 1920 and 1932, mainly used in Taiwan. Braille script. Han script, Simplified variant, used since 1956, official in Mainland China (1956) and Singapore (1969), also used elsewhere. Han script, Traditional variant, used since mid-19th century, official in Taiwan, also used elsewhere. Latin script. *Other*: Non-indigenous. *Worldwide*: Total users in all countries: 1,138,222,350 (as L1: 939,237,350; as L2: 198,985,000). Global EGIDS level: 0 (International). Indigenous in: China. Also established in 17 other countries and unestablished in 60 more.

**Danish** [dan]. Autonym: Dansk. *Users*: 2,700 in Luxembourg (Leclerc 2021b). *Status*: Unestablished. *Class*: Indo-European, Germanic, North, East Scandinavian, Danish-Swedish, Danish-Riksmal, Danish. *Type*: SVO; prepositions; noun head final; gender (common/neuter); indefinite and definite affix; passives (middle, active, passive); tense; comparatives; 19 consonant and 27 vowel phonemes; pitch accent; stress on first syllable. *Lg Dev*: Fully developed. Bible: 1550–1993. *Writing*: Braille script. Latin script, primary usage. *Other*: Non-indigenous. *Worldwide*: Total users in all countries: 5,612,110 (as L1: 5,608,410; as L2: 3,700). Global EGIDS level: 1 (National). Indigenous in: Denmark, Germany. Also established in: Faroe Islands, Greenland, Sweden. Unestablished in: Australia, Canada, Iceland, New Zealand, Norway, Spain, Switzerland, United Kingdom, United States.

**Dutch** [nld]. Autonym: Nederlands. *Users*: 21,900 in Luxembourg (Leclerc 2021b). *Status*: Unestablished. *Class*: Indo-European, Germanic, West, Low Saxon-Low Franconian, Low Franconian. *Type*: SVO (SOV in subordinate clauses); prepositions; noun head final; gender (common/neuter); definite and indefinite articles; passives (middle, active, passive); tense and aspect; comparatives; 21 consonants, 13 vowels, 3 diphthongs; non-tonal; stress on first syllable. *Lg Dev*: Fully developed. Bible: 1526–2004. *Writing*: Braille script, used since 1951. Latin script, primary usage. *Other*: Non-indigenous. *Worldwide*: Total users in all countries: 24,487,090 (as L1: 22,862,590; as L2: 1,624,500). Global EGIDS level: 1 (National). Indigenous in: Belgium, Netherlands. Also established in: Aruba, Caribbean Netherlands, Curacao, Sint Maarten, Suriname, United States. Unestablished in: Australia, Austria, Brazil, Canada, Denmark, Finland, Germany, Greece, Indonesia, New Zealand, Norway, Portugal, South Africa, Spain, Sweden, Switzerland, United Kingdom.

**English** [eng] (Anglais, Englesch, Englisch). Autonym: English. *Users*: 369,300 in Luxembourg, all users. L1 users: 13,300 in Luxembourg (2021). L2 users: 356,000 (2021). *Location*: Widespread. *Status*: 4 (Educational). *Class*: Indo-European, Germanic, West, English. *Type*: SVO; prepositions; genitives after noun heads; articles, adjectives, numerals before noun heads; question word initial; word order distinguishes subject, object, indirect objects, given and new information, topic and comment; active and passive; causative; comparative; consonant and vowel clusters; 24 consonants, 13 vowels, 8 diphthongs; non-tonal; free stress; phrasal verbs. *Lg Use*: Business, finance, industry. Used as L2 by Luxembourgish [ltz]. *Lg Dev*: Taught as subject in all secondary schools. Taught in some tertiary schools. Fully developed. Bible: 1382–2002. *Writing*: Braille script. Deseret Alphabet, developed in 1854

with limited usage until 1877. Duployan shorthand. Latin script, primary usage. Shavian (Shaw) script, no longer in use. *Other*: Non-indigenous. *Worldwide*: Total users in all countries: 1,456,448,320 (as L1: 379,682,200; as L2: 1076,766,120). Global EGIDS level: 0 (International). Indigenous in: Ireland, United Kingdom. Also established in 167 other countries and unestablished in 16 more.

**French** [fra] (Französisch, Français). Autonym: français. *Users*: 590,800 in Luxembourg, all users. L1 users: 76,800 in Luxembourg (2021 census). L2 users: 514,000 (Marcoux et al 2022). *Status*: 1 (National). Statutory national working language (1984, Language Law of 24 February, Article 2). *Class*: Indo-European, Italic, Romance, Italo-Western, Western, Gallo-Iberian, Gallo-Romance, Gallo-Rhaetian, Oil, French. *Type*: SVO; prepositions; noun head final for common adjectives, numbers, possessives, but most attributive adjectives come after the noun; gender (masculine/feminine); definite and indefinite articles; verb affixes mark person, number; passives; tense; comparatives; 20 consonant and 14 vowel phonemes; non-tonal; syllable-timed stress. *Lg Use*: Used mainly by intellectuals, professionals, authorities, and for commerce. *Lg Dev*: Taught as subject in all primary schools. Used as language of instruction in all secondary schools. Taught in some tertiary schools. Fully developed. Bible: 1530–2000. *Writing*: Braille script. Duployan shorthand. Latin script, primary usage. *Map*: 18. *Worldwide*: Total users in all countries: 309,804,220 (as L1: 80,770,190; as L2: 229,034,030). Global EGIDS level: 0 (International). Also indigenous in: Andorra, Belgium, France, Monaco, Switzerland. Also established in 96 other countries and unestablished in 24 more.

**German Sign Language** [gsg] (DGS, Deutsche Gebärdensprache). *Users*: 600 in Luxembourg (2021 DBS/DOOR/SIL). Estimated 600 deaf signers (0.1% of general population), most of whom use German Sign Language. *Location*: Scattered. *Status*: 6a\* (Vigorous). Recognized language (Gesetzesvorentwurf No. 7142). *Class*: Sign language, Deaf community sign language. *Type*: One-handed fingerspelling. *Lg Use*: Some also use Standard German [deu] (Timmermans 2005). *Lg Dev*: TV. Theater. Dictionary. Grammar. Bible portions: 1998. Agency: Daaflux. *Other*: Non-indigenous. Deaf education historically has been in spoken/written German, although sign-supported German was introduced in 1993 (Timmermans 2005). No information as to how similar or different it is to German Sign Language in Germany. *Worldwide*: Total users in all countries: 80,600. Global EGIDS level: 5 (Developing). Indigenous in: Germany.

**German, Standard** [deu] (Allemand, Deutsch, Däitsch). Autonym: Deutsch. *Users*: 457,700 in Luxembourg, all users. L1 users: 19,700 in Luxembourg (2021). L2 users: 438,000 (2021). *Status*: 1 (National). Statutory national working language (1984, Language Law of 24 February, Articles 2, 4). *Class*: Indo-European, Germanic, West, High German, German, Middle German, East Middle German. *Type*: SVO; prepositions; noun head final; gender (masculine/feminine/neuter); definite and indefinite articles; case-marking (4 cases); verb affixes mark person, number; passives; tense; comparatives; 22 consonants, 22 vowels, 3 diphthongs; non-tonal; stress on first syllable of the root. *Lg Dev*: Taught in all primary and secondary schools. Taught in some tertiary schools. Fully developed. Bible: 1466–2016. *Writing*: Braille script. Latin script, primary usage. Latin script, Fraktur variant, used until

1940. Runic script, no longer in use. *Other*: Non-indigenous. *Worldwide*: Total users in all countries: 133,245,880 (as L1: 75,282,080; as L2: 57,963,800). Indigenous in: Austria, Belgium, Czechia, Denmark, Germany, Italy. Also established in 39 other countries and unestablished in 23 more.

**Greek** [ell]. *Users*: 1,480 in Luxembourg (2021). *Status*: Unestablished. *Class*: Indo-European, Greek, Attic. *Type*: SVO; prepositions; noun head final; gender (masculine/feminine/neuter); definite and indefinite articles; case-marking (3 cases); verb affixes mark person, number; passives (active, medio-passive, passive); tense and aspect; comparatives; 18 consonant and 5 vowel phonemes; non-tonal; free stress. *Lg Dev*: Fully developed. *Bible*: 1840–1994. *Writing*: Braille script. Cyrillic script, used in Ukraine. Greek script, primary usage. *Other*: Non-indigenous. *Worldwide*: Total users in all countries: 13,088,220 (as L1: 12,992,220; as L2: 96,000). Global EGIDS level: 1 (National). Indigenous in: Albania, Greece. Also established in: Australia, Cyprus, Egypt, Hungary, Italy, Romania, Turkey, Ukraine. Unestablished in: Argentina, Armenia, Austria, Belgium, Bosnia and Herzegovina, Brazil, Bulgaria, Canada, Chile, Czechia, Democratic Republic of the Congo, Denmark, Djibouti, Finland, Germany, Israel, Jordan, Kazakhstan, Kuwait, Kyrgyzstan, Lebanon, Libya, Malawi, Mexico, Mozambique, Netherlands, New Zealand, North Macedonia, Norway, Panama, Russian Federation, Sierra Leone, South Africa, Spain, Sweden, Switzerland, United Kingdom, United States, Uruguay, Uzbekistan, Zambia, Zimbabwe.

**Hindi** [hin]. *Users*: 1,300 in Luxembourg (Leclerc 2021b). *Status*: Unestablished. *Class*: Indo-European, Indo-Iranian, Indo-Aryan, Western Hindi, Hindustani. *Type*: SOV; postpositions; noun head final; content q-word in situ; gender (masculine/feminine); no articles; clause constituents partially indicated by case-marking (direct, oblique), postpositions, and word order; verbal affixation marks person, number, gender, and honorificity of subject; split ergativity; both tense and aspect; passives and voice; causatives; non-tonal; 30 consonants, 10 vowels, 2 diphthongs; stress linked to syllable weight. *Lg Dev*: Fully developed. *Bible*: 1835–2000. *Writing*: Braille script. Devanagari script, primary usage. Latin script, recent informal usage, especially online on social media. Mahajani script, no longer in use, historic usage. Nawa script, no longer in use, historic usage. *Other*: Non-indigenous. *Worldwide*: Total users in all countries: 609,454,770 (as L1: 344,650,870; as L2: 264,803,900). Global EGIDS level: 1 (National). Indigenous in: India. Also established in: Kuwait, Nepal, Singapore, South Africa. Unestablished in: Australia, Austria, Belgium, Belize, Brunei, Cambodia, Canada, Cyprus, Democratic Republic of the Congo, Equatorial Guinea, Eswatini, Finland, Germany, Indonesia, Ireland, Kenya, Lesotho, Malaysia, Mauritius, Myanmar, New Zealand, Oman, Panama, Philippines, Portugal, Puerto Rico, Russian Federation, Saint Kitts and Nevis, Saint Lucia, Saudi Arabia, Sierra Leone, Sint Maarten, Sri Lanka, Sweden, Thailand, Uganda, United Arab Emirates, United Kingdom, United States, Yemen.

**Hungarian** [hun]. Autonym: Magyar. *Users*: 1,120 in Luxembourg (2021). *Status*: Unestablished. *Class*: Uralic. *Type*: SVO; postpositions; noun head final; definite article; case-marking (18 cases); verb affixes mark person, number, object; no passives; tense; comparatives; 25 consonants, 14 vowels, no diphthongs; non-tonal; stress on first syllable; vowel harmony. *Lg*

*Dev:* Fully developed. *Bible:* 1590–1991. *Writing:* Braille script. Latin script, primary usage. *Other:* Non-indigenous. *Worldwide:* Total users in all countries: 12,617,790 (as L1: 12,610,690; as L2: 7,100). Global EGIDS level: 1 (National). Indigenous in: Austria, Hungary, Romania, Serbia, Slovakia, Ukraine. Also established in: Croatia, Israel, Slovenia. Unestablished in: Australia, Brazil, Canada, Czechia, Denmark, Finland, Germany, Ireland, Moldova, Netherlands, New Zealand, Norway, Russian Federation, Spain, Sweden, Switzerland, United Kingdom, United States.

**Italian** [ita]. Autonym: Italiano. *Users:* 21,000 in Luxembourg (Leclerc 2021b). *Status:* Unestablished. *Class:* Indo-European, Italic, Romance, Italo-Western, Italo-Dalmatian. *Type:* SVO; prepositions; gender (masculine/feminine); definite and indefinite articles; verb affixes mark person, number; passives; tense; comparatives; 23 consonant and 7 vowel phonemes; non-tonal; stress mostly on penultimate syllable. *Lg Dev:* Taught as subject in secondary schools. Fully developed. *Bible:* 1471–1985. *Writing:* Braille script, used since 1974. Latin script, primary usage. *Other:* Non-indigenous. *Worldwide:* Total users in all countries: 67,935,480 (as L1: 64,647,380; as L2: 3,288,100). Global EGIDS level: 1 (National). Indigenous in: Croatia, Italy, San Marino, Slovenia, Switzerland. Also established in 12 other countries and unestablished in 34 more.

**Kabuverdianu** [kea]. Autonym: Kabuverdianu, Kriol. *Users:* 4,000 in Luxembourg (Leclerc 2021b). *Status:* Unestablished. *Class:* Creole, Portuguese based. *Lg Use:* Most also use French [fra]. Some also use Luxembourgish [ltz]. Some also use Standard German [deu]. *Lg Dev:* Literature. Newspapers. Periodicals. Radio. TV. Videos. Dictionary. Grammar. Texts. Bible portions: 2004–2013. *Writing:* Latin script. *Other:* Non-indigenous. *Worldwide:* Total users in all countries: 1,195,500 (as L1: 1,181,500; as L2: 14,000). Global EGIDS level: 3 (Wider communication). Indigenous in: Cape Verde Islands. Also established in: Portugal, São Tomé e Príncipe, United States. Unestablished in: Angola, Argentina, Brazil, Canada, France, Gabon, Germany, Guinea-Bissau, Italy, Mozambique, Netherlands, Senegal, Spain, Sweden, Switzerland.

**Luxembourgish** [ltz] (Frankish, Letzburgerisch, Letzeburgerisch, Luxembourgeois, Luxemburgian, Luxemburgish, Moselle Franconian). Autonym: Lëtzebuergesch. *Users:* 416,400 in Luxembourg, all users. L1 users: 330,000 in Luxembourg (2021). L2 users: 86,400 (2021). *Location:* Widespread. *Status:* 4 (Educational). Statutory language of national identity (1984, Language Law of 24 February, Article 1). *Class:* Indo-European, Germanic, West, High German, German, Middle German, West Middle German, Moselle Franconian. *Dialects:* Eechternoacher, Kliärrwer, Miseler, Stater, Veiner, Minetter, Weelzer. As distinct from Standard German [deu] as is Dutch [nld] (Stephens 1976); not inherently intelligible with it. A Moselle variety of Frankish-German origin, related to varieties of Mitteldeutsch of Belgium. *Type:* SVO; prepositions; articles, adjectives, numerals, relatives before noun heads; question word initial; 3 prefixes, 2 suffixes on a word; rigid word order; passives; nontonal. *Lg Use:* Vigorous. The language of creativity for most. Modest amounts of literature. All domains. Used by all. Positive attitudes. West and Central varieties considered more sophisticated; North more rural, peasant-like. Variety used by older Belgian-border inhabitants considered

old-fashioned and full of French [fra] words, but perfectly intelligible. Most also use English [eng] (European Commission 2006). Also use French [fra]. Also use Standard German [deu]. Used as L2 by Kabuverdianu [kea]. *Lg Dev*: Literacy rate in L2: 99% in German [deu] and French [fra]. Taught in all primary schools in early grades only. Newspapers. Radio. TV. Dictionary. Grammar. NT: 2017. *DLS*: Vital (0.60). *Writing*: Latin script. *Other*: Christian. *Map*: 18. *Worldwide*: Total users in all countries: 528,500 (as L1: 442,100; as L2: 86,400). Also indigenous in: Belgium, France, Germany. Also established in: Romania (Transylvanian Saxon).

**Montenegrin** [cnr]. *Users*: 1,730 in Luxembourg (2021). *Status*: Unestablished. *Class*: Indo-European, Balto-Slavic, Slavic, South, Western. *Lg Dev*: Grammar. *Writing*: Cyrillic script. Latin script. *Other*: Non-indigenous. *Worldwide*: Total users in all countries: 266,520. Global EGIDS level: 1 (National). Indigenous in: Montenegro. Also established in: Serbia. Unestablished in: Bosnia and Herzegovina, Croatia, Germany, Slovenia.

**Polish** [pol]. *Users*: 2,850 in Luxembourg (2021). *Status*: Unestablished. *Class*: Indo-European, Balto-Slavic, Slavic, West, Lechitic. *Type*: SVO; prepositions; noun head final; gender (masculine/feminine/neuter); no articles; case-marking (7 cases); verb affixes mark person, number; passives; aspect; comparatives; 30 consonant and 8 vowel phonemes; non-tonal; stress on penultimate syllable. *Lg Dev*: Fully developed. Bible: 1561–2018. *Writing*: Braille script. Latin script, primary usage. *Other*: Non-indigenous. *Worldwide*: Total users in all countries: 40,589,930 (as L1: 39,896,930; as L2: 693,000). Global EGIDS level: 1 (National). Indigenous in: Czechia, Poland, Ukraine. Also established in: Germany, Hungary, Israel, Lithuania, Romania, Russian Federation, Slovakia. Unestablished in: Argentina, Australia, Austria, Azerbaijan, Belarus, Belgium, Brazil, Bulgaria, Canada, Croatia, Cyprus, Denmark, Estonia, Finland, Georgia, Greece, Iceland, Ireland, Kazakhstan, Latvia, Netherlands, New Zealand, Norway, Serbia, Spain, Sweden, United Kingdom, United States, Uzbekistan.

**Portuguese** [por]. Autonym: Português. *Users*: 102,000 in Luxembourg (Leclerc 2021b). *Location*: Diekirch district: Diekirch canton; Luxembourg district: Esch-sur-Alzette canton, Luxembourg canton. *Status*: 5\* (Dispersed). *Class*: Indo-European, Italic, Romance, Italo-Western, Western, Gallo-Iberian, Ibero-Romance, West Iberian, Portuguese-Galician. *Type*: SVO; prepositions; gender (masculine/feminine); definite and indefinite articles; verb affixes mark person, number; passives; tense; comparatives; 21 consonants, 13 vowels, 11 diphthongs; non-tonal. *Lg Use*: A 1972 law that allows family unification for Portuguese immigrants in Luxembourg has turned the Portuguese community into a demographically self-sustaining unit, marking it out from other groups who did not wish to move permanently or who did not enjoy this special status. *Lg Dev*: Taught as subject in secondary schools. Fully developed. Bible: 1751–2017. *Writing*: Braille script. Latin script, primary usage. *Other*: Non-indigenous. *Worldwide*: Total users in all countries: 263,638,850 (as L1: 236,266,650; as L2: 27,372,200). Global EGIDS level: 1 (National). Indigenous in: Portugal, Spain. Also established in 13 other countries and unestablished in 39 more.

**Romanian** [ron]. *Users*: 1,300 in Luxembourg (2021). *Status*: Unestablished. *Class*: Indo-

European, Italic, Romance, Eastern. *Type*: SVO; prepositions; noun head initial; gender (masculine/feminine/ambigeneric); indefinite article and definite article suffix; case-marking (2 cases); verb affixes mark person, number; passives; tense; 22 consonants, 7 vowels, 2 diphthongs; non-tonal; free stress. *Lg Dev*: Fully developed. *Bible*: 1688–1989. *Writing*: Braille script. Cyrillic script, official usage in Moldova until 1991. Cyrillic script, Old Church Slavonic variant, 1688, experimental usage. Latin script, primary usage. *Other*: Non-indigenous. *Worldwide*: Total users in all countries: 24,478,820 (as L1: 24,461,820; as L2: 17,000). Global EGIDS level: 1 (National). Indigenous in: Moldova, Romania, Ukraine. Also established in: Hungary, Israel, Serbia. Unestablished in: Argentina, Armenia, Australia, Austria, Azerbaijan, Belgium, Brazil, Bulgaria, Canada, Croatia, Cyprus, Czechia, Denmark, Finland, Georgia, Germany, Greece, Ireland, Italy, Kazakhstan, Latvia, New Zealand, Norway, Portugal, Russian Federation, Spain, Sweden, Turkmenistan, United Kingdom, United States, Uzbekistan.

**Russian** [rus]. *Users*: 4,500 in Luxembourg (Arefyev 2012), all users. L1 users: 2,010 (2021). *Status*: Unestablished. *Class*: Indo-European, Balto-Slavic, Slavic, East. *Type*: SVO; prepositions; genitives after noun heads; adjectives, numerals before noun heads; question word initial; 1 prefix on a word; recursive addition of suffixes allowed; gender (masculine/feminine/neuter); no articles; case-marking (6 cases); verb affixes mark person, number; passives; tense and aspect; comparatives; 32 consonants, 5 vowels, 4 diphthongs; non-tonal; free stress. *Lg Dev*: Fully developed. *Bible*: 1876–2011. *Writing*: Braille script. Cyrillic script, primary usage. *Other*: Non-indigenous. *Worldwide*: Total users in all countries: 254,997,130 (as L1: 146,954,150; as L2: 107,987,980). Global EGIDS level: 0 (International). Indigenous in: Belarus, Georgia, Kazakhstan, Russian Federation, Ukraine. Also established in 17 other countries and unestablished in 29 more.

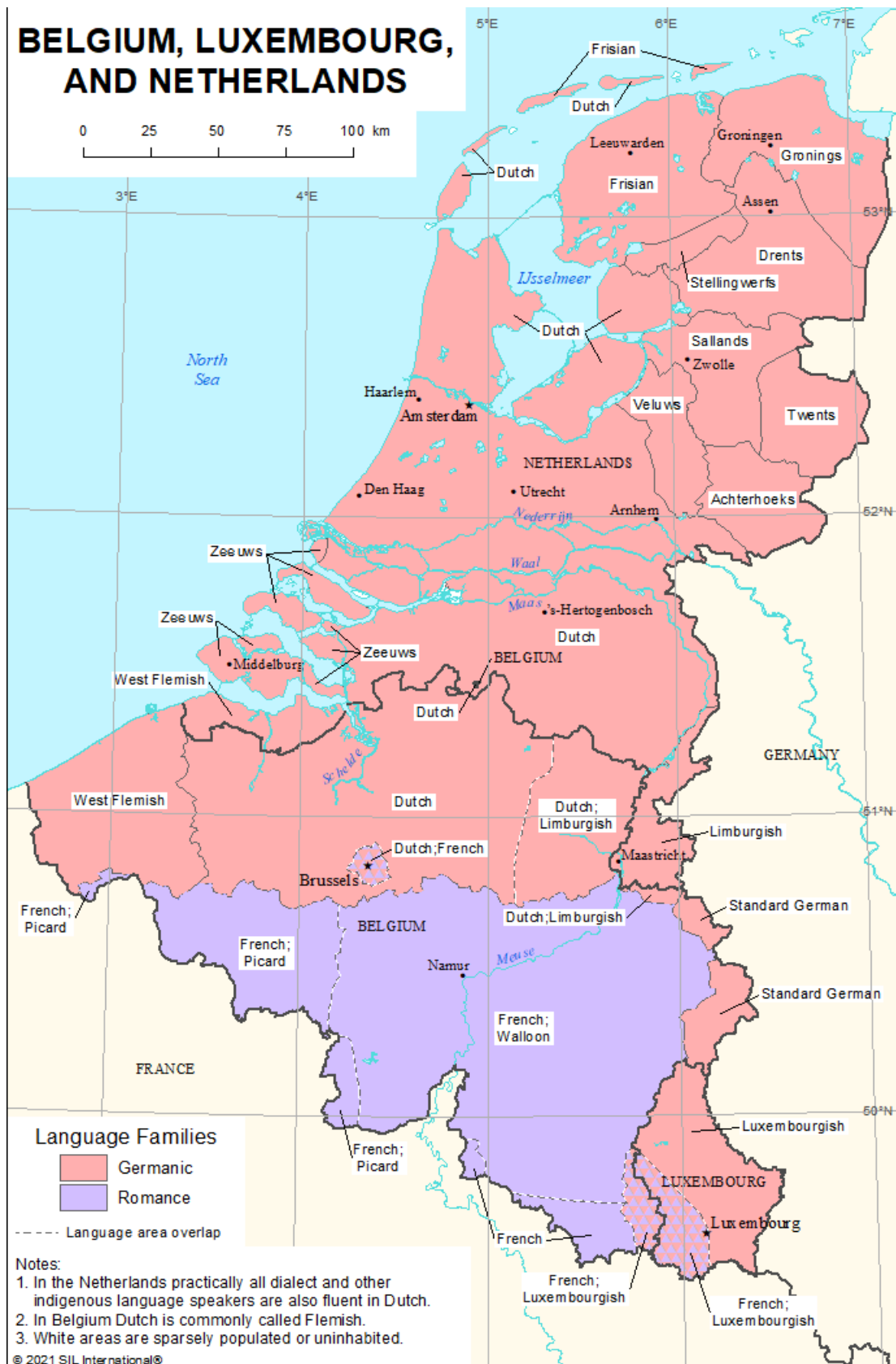
**Serbian** [srp]. *Users*: 16,000 in Luxembourg (Leclerc 2021b). *Status*: Unestablished. *Class*: Indo-European, Balto-Slavic, Slavic, South, Western. *Type*: SVO; prepositions; noun head final; gender (masculine/feminine/neuter); no articles; case-marking (7 cases); verb affixes mark person, number; passives; tense and aspect; causatives; comparatives; 25 consonant and 5 vowel phonemes, the ‘r’ also functioning as a vocalic (or syllabic) consonant; nontonal. *Lg Dev*: Fully developed. *Bible*: 1804–1868. *Writing*: Braille script. Cyrillic script, primary usage. Latin script. *Other*: Non-indigenous. *Worldwide*: Total users in all countries: 10,213,776 (as L1: 10,193,976; as L2: 19,800). Global EGIDS level: 1 (National). Indigenous in: Montenegro, North Macedonia, Serbia. Also established in: Albania, Bosnia and Herzegovina, Croatia, Hungary, Romania, Russian Federation, Slovenia, Turkey. Unestablished in: Argentina, Australia, Austria, Brazil, Canada, Czechia, Denmark, Germany, Greece, Italy, Libya, Netherlands, Norway, Spain, Sweden, Switzerland, United States, Zambia.

**Spanish** [spa]. Autonym: Castellano, Español. *Users*: 11,080 in Luxembourg, all users. L1 users: 5,400 in Luxembourg (Leclerc 2021b). L2 users: 5,680 (2021). *Location*: Scattered. *Status*: 4 (Educational). *Class*: Indo-European, Italic, Romance, Italo-Western, Western, Gallo-Iberian, Ibero-Romance, West Iberian, Castilian. *Type*: SVO; prepositions; genitives, relatives after

noun heads; articles, numerals before noun heads; adjectives before or after noun heads depending on whether it is evaluative or descriptive; question word initial; gender (masculine/feminine); definite and indefinite articles; verb affixes mark number, person; passives; tense; comparatives; 20 consonants, 5 vowels, 5 diphthongs; non-tonal; stress on penultimate syllable. Silbo Gomero whistled variety of Spanish used in Canary Islands. *Lg Dev*: Taught as subject in secondary schools. Fully developed. Bible: 1553–2012. *Writing*: Braille script. Latin script, primary usage. *Other*: Non-indigenous. *Worldwide*: Total users in all countries: 559,078,890 (as L1: 485,063,960; as L2: 74,014,930). Global EGIDS level: 0 (International). Indigenous in: Andorra, Gibraltar, Spain. Also established in 39 other countries and unestablished in 33 more.

**Swedish** [swe]. Autonym: Svenska. *Users*: 1,700 in Luxembourg (Leclerc 2021b). *Status*: Unestablished. *Class*: Indo-European, Germanic, North, East Scandinavian, Danish-Swedish, Swedish. *Type*: SVO; prepositions; noun head final; gender (common, neuter); definite and indefinite articles; passives (active, middle, passive); comparatives; 19 consonant and 17 vowel phonemes; tonal (2 tones). *Lg Dev*: Fully developed. Bible: 1541–1999. *Writing*: Braille script, used since 1917. Latin script, primary usage. *Other*: Non-indigenous. *Worldwide*: Total users in all countries: 13,069,330 (as L1: 9,911,930; as L2: 3,157,400). Global EGIDS level: 1 (National). Indigenous in: Aland Islands, Finland, Sweden. Also established in: Denmark. Unestablished in: Australia, Austria, Canada, Estonia, Germany, New Zealand, Norway, Russian Federation, Spain, Switzerland, United Kingdom, United States.

# Language Map



## Languages by Population

In this section the languages of Luxembourg are listed in order of their population of first-language speakers within the country, from highest to lowest. The entries report just the population and status elements.

### 100,000 to 999,999

**Luxembourgish** [ltz] *Users:* 330,000 in Luxembourg (2021). 416,400 in Luxembourg, all users. L2 users: 86,400 (2021). *Status:* 4 (Educational). Statutory language of national identity (1984, Language Law of 24 February, Article 1). *Worldwide:* Total users in all countries: 528,500 (as L1: 442,100; as L2: 86,400).

**Portuguese** [por] *Users:* 102,000 in Luxembourg (Leclerc 2021b). *Status:* 5\* (Dispersed). *Worldwide:* Total users in all countries: 263,638,850 (as L1: 236,266,650; as L2: 27,372,200).

### 10,000 to 99,999

**French** [fra] *Users:* 76,800 in Luxembourg (2021 census). 590,800 in Luxembourg, all users. L2 users: 514,000 (Marcoux et al 2022). *Status:* 1 (National). Statutory national working language (1984, Language Law of 24 February, Article 2). *Worldwide:* Total users in all countries: 309,804,220 (as L1: 80,770,190; as L2: 229,034,030).

**Dutch** [nld] *Users:* 21,900 in Luxembourg (Leclerc 2021b). *Status:* Unestablished. *Worldwide:* Total users in all countries: 24,487,090 (as L1: 22,862,590; as L2: 1,624,500).

**Italian** [ita] *Users:* 21,000 in Luxembourg (Leclerc 2021b). *Status:* Unestablished. *Worldwide:* Total users in all countries: 67,935,480 (as L1: 64,647,380; as L2: 3,288,100).

**German, Standard** [deu] *Users:* 19,700 in Luxembourg (2021). 457,700 in Luxembourg, all users. L2 users: 438,000 (2021). *Status:* 1 (National). Statutory national working language (1984, Language Law of 24 February, Articles 2, 4). *Worldwide:* Total users in all countries: 133,245,880 (as L1: 75,282,080; as L2: 57,963,800).

**Serbian** [srp] *Users:* 16,000 in Luxembourg (Leclerc 2021b). *Status:* Unestablished. *Worldwide:* Total users in all countries: 10,213,776 (as L1: 10,193,976; as L2: 19,800).

**English** [eng] *Users:* 13,300 in Luxembourg (2021). 369,300 in Luxembourg, all users. L2 users: 356,000 (2021). *Status:* 4 (Educational). *Worldwide:* Total users in all countries: 1,456,448,320 (as L1: 379,682,200; as L2: 1076,766,120).

### 1,000 to 9,999

**Arabic, Levantine** [apc] *Users:* 7,600 in Luxembourg (Leclerc 2021b). *Status:* Unestablished. *Worldwide:* Total users in all countries: 47,595,360 (as L1: 47,236,360; as L2: 359,000).

**Spanish** [[spa](#)] *Users:* 5,400 in Luxembourg (Leclerc 2021b). 11,080 in Luxembourg, all users. L2 users: 5,680 (2021). *Status:* 4 (Educational). *Worldwide:* Total users in all countries: 559,078,890 (as L1: 485,063,960; as L2: 74,014,930).

**Kabuverdianu** [[kea](#)] *Users:* 4,000 in Luxembourg (Leclerc 2021b). *Status:* Unestablished. *Worldwide:* Total users in all countries: 1,195,500 (as L1: 1,181,500; as L2: 14,000).

**Polish** [[pol](#)] *Users:* 2,850 in Luxembourg (2021). *Status:* Unestablished. *Worldwide:* Total users in all countries: 40,589,930 (as L1: 39,896,930; as L2: 693,000).

**Danish** [[dan](#)] *Users:* 2,700 in Luxembourg (Leclerc 2021b). *Status:* Unestablished. *Worldwide:* Total users in all countries: 5,612,110 (as L1: 5,608,410; as L2: 3,700).

**Bosnian** [[bos](#)] *Users:* 2,610 in Luxembourg (2021). *Status:* Unestablished. *Worldwide:* Total users in all countries: 2,618,390 (as L1: 2,608,490; as L2: 9,900).

**Chinese, Mandarin** [[cmn](#)] *Users:* 2,290 in Luxembourg (2021). Mandarin Chinese and Yue Chinese (Cantonese) [[yue](#)]. *Status:* Unestablished. *Worldwide:* Total users in all countries: 1,138,222,350 (as L1: 939,237,350; as L2: 198,985,000).

**Russian** [[rus](#)] *Users:* 2,010 (2021). 4,500 in Luxembourg (Arefyev 2012), all users. *Status:* Unestablished. *Worldwide:* Total users in all countries: 254,997,130 (as L1: 146,954,150; as L2: 107,987,980).

**Montenegrin** [[cnr](#)] *Users:* 1,730 in Luxembourg (2021). *Status:* Unestablished. *Worldwide:* Total users in all countries: 266,520.

**Swedish** [[swe](#)] *Users:* 1,700 in Luxembourg (Leclerc 2021b). *Status:* Unestablished. *Worldwide:* Total users in all countries: 13,069,330 (as L1: 9,911,930; as L2: 3,157,400).

**Greek** [[ell](#)] *Users:* 1,480 in Luxembourg (2021). *Status:* Unestablished. *Worldwide:* Total users in all countries: 13,088,220 (as L1: 12,992,220; as L2: 96,000).

**Albanian, Tosk** [[als](#)] *Users:* 1,330 in Luxembourg (2021). *Status:* Unestablished. *Worldwide:* Total users in all countries: 1,924,600 (as L1: 1,918,600; as L2: 6,000).

**Hindi** [[hin](#)] *Users:* 1,300 in Luxembourg (Leclerc 2021b). *Status:* Unestablished. *Worldwide:* Total users in all countries: 609,454,770 (as L1: 344,650,870; as L2: 264,803,900).

**Romanian** [[ron](#)] *Users:* 1,300 in Luxembourg (2021). *Status:* Unestablished. *Worldwide:* Total users in all countries: 24,478,820 (as L1: 24,461,820; as L2: 17,000).

**Hungarian** [[hun](#)] *Users:* 1,120 in Luxembourg (2021). *Status:* Unestablished. *Worldwide:* Total users in all countries: 12,617,790 (as L1: 12,610,690; as L2: 7,100).

## 100 to 999

**German Sign Language** [[gsg](#)] *Users:* 600 in Luxembourg (2021 DBS/DOOR/SIL). Estimated 600 deaf signers (0.1% of general population), most of whom use German Sign Language. *Status:* 6a\* (Vigorous). Recognized language (Gesetzesvorentwurf No. 7142). *Worldwide:*

Total users in all countries: 80,600.

## Languages by Status

In this section the languages of Luxembourg are listed in order of their status within the country as represented by their level on the EGIDs scale (Lewis and Simons 2010). The language entries are reduced to just the information elements that are relevant to assessing the EGIDS level: population, status, language use, language development, and writing.

### 1 (National)

**French** [[fra](#)] *Users*: 590,800 in Luxembourg, all users. L1 users: 76,800 in Luxembourg (2021 census). L2 users: 514,000 (Marcoux et al 2022). *Status*: Statutory national working language (1984, Language Law of 24 February, Article 2). *Lg Use*: Used mainly by intellectuals, professionals, authorities, and for commerce. *Writing*: Braille script. Duployan shorthand. Latin script, primary usage. *Worldwide*: Total users in all countries: 309,804,220 (as L1: 80,770,190; as L2: 229,034,030).

**German, Standard** [[deu](#)] *Users*: 457,700 in Luxembourg, all users. L1 users: 19,700 in Luxembourg (2021). L2 users: 438,000 (2021). *Status*: Statutory national working language (1984, Language Law of 24 February, Articles 2, 4). *Writing*: Braille script. Latin script, primary usage. Latin script, Fraktur variant, used until 1940. Runic script, no longer in use. *Worldwide*: Total users in all countries: 133,245,880 (as L1: 75,282,080; as L2: 57,963,800).

### 4 (Educational)

**English** [[eng](#)] *Users*: 369,300 in Luxembourg, all users. L1 users: 13,300 in Luxembourg (2021). L2 users: 356,000 (2021). *Lg Use*: Business, finance, industry. Used as L2 by Luxembourgish [[ltz](#)]. *Writing*: Braille script. Deseret Alphabet, developed in 1854 with limited usage until 1877. Duployan shorthand. Latin script, primary usage. Shavian (Shaw) script, no longer in use. *Worldwide*: Total users in all countries: 1,456,448,320 (as L1: 379,682,200; as L2: 1,076,766,120).

**Luxembourgish** [[ltz](#)] *Users*: 416,400 in Luxembourg, all users. L1 users: 330,000 in Luxembourg (2021). L2 users: 86,400 (2021). *Status*: Statutory language of national identity (1984, Language Law of 24 February, Article 1). *Lg Use*: Vigorous. The language of creativity for most. Modest amounts of literature. All domains. Used by all. Positive attitudes. West and Central varieties considered more sophisticated; North more rural, peasant-like. Variety used by older Belgian-border inhabitants considered old-fashioned and full of French [[fra](#)] words, but perfectly intelligible. Most also use English [[eng](#)] (European Commission 2006). Also use French [[fra](#)]. Also use Standard German [[deu](#)]. Used as L2 by Kabuverdianu [[kea](#)]. *Lg Dev*: Newspapers. Radio. TV. Dictionary. Grammar. NT: 2017. *Writing*: Latin script. *Worldwide*: Total users in all countries: 528,500 (as L1: 442,100; as L2: 86,400).

**Spanish** [[spa](#)] *Users*: 11,080 in Luxembourg, all users. L1 users: 5,400 in Luxembourg (Leclerc

2021b). L2 users: 5,680 (2021). *Writing*: Braille script. Latin script, primary usage.

*Worldwide*: Total users in all countries: 559,078,890 (as L1: 485,063,960; as L2: 74,014,930).

## 5 (Dispersed)

**Portuguese** [por] *Users*: 102,000 in Luxembourg (Leclerc 2021b). *Lg Use*: A 1972 law that allows family unification for Portuguese immigrants in Luxembourg has turned the Portuguese community into a demographically self-sustaining unit, marking it out from other groups who did not wish to move permanently or who did not enjoy this special status. *Writing*: Braille script. Latin script, primary usage. *Worldwide*: Total users in all countries: 263,638,850 (as L1: 236,266,650; as L2: 27,372,200).

## 6a (Vigorous)

**German Sign Language** [gsg] *Users*: 600 in Luxembourg (2021 DBS/DOOR/SIL). Estimated 600 deaf signers (0.1% of general population), most of whom use German Sign Language. *Status*: Recognized language (Gesetzesvorentwurf No. 7142). *Lg Use*: Some also use Standard German [deu] (Timmermans 2005). *Worldwide*: Total users in all countries: 80,600.

## Unestablished

**Albanian, Tosk** [als] *Users*: 1,330 in Luxembourg (2021). *Writing*: Elbasan script, no longer in use. Greek script, no longer in use. Latin script. *Worldwide*: Total users in all countries: 1,924,600 (as L1: 1,918,600; as L2: 6,000).

**Arabic, Levantine** [apc] *Users*: 7,600 in Luxembourg (Leclerc 2021b). *Writing*: Arabic script, Naskh variant. *Worldwide*: Total users in all countries: 47,595,360 (as L1: 47,236,360; as L2: 359,000).

**Bosnian** [bos] *Users*: 2,610 in Luxembourg (2021). *Writing*: Arabic script, Naskh variant, no longer in use. Cyrillic script. Latin script. *Worldwide*: Total users in all countries: 2,618,390 (as L1: 2,608,490; as L2: 9,900).

**Chinese, Mandarin** [cmn] *Users*: 2,290 in Luxembourg (2021). Mandarin Chinese and Yue Chinese (Cantonese) [yue]. *Writing*: Bopomofo script, used since 1913, revised in 1920 and 1932, mainly used in Taiwan. Braille script. Han script, Simplified variant, used since 1956, official in Mainland China (1956) and Singapore (1969), also used elsewhere. Han script, Traditional variant, used since mid-19th century, official in Taiwan, also used elsewhere. Latin script. *Worldwide*: Total users in all countries: 1,138,222,350 (as L1: 939,237,350; as L2: 198,985,000).

**Danish** [dan] *Users*: 2,700 in Luxembourg (Leclerc 2021b). *Writing*: Braille script. Latin script, primary usage. *Worldwide*: Total users in all countries: 5,612,110 (as L1: 5,608,410; as L2: 3,700).

**Dutch** [nld] *Users*: 21,900 in Luxembourg (Leclerc 2021b). *Writing*: Braille script, used since

1951. Latin script, primary usage. *Worldwide*: Total users in all countries: 24,487,090 (as L1: 22,862,590; as L2: 1,624,500).

**Greek** [ell] *Users*: 1,480 in Luxembourg (2021). *Writing*: Braille script. Cyrillic script, used in Ukraine. Greek script, primary usage. *Worldwide*: Total users in all countries: 13,088,220 (as L1: 12,992,220; as L2: 96,000).

**Hindi** [hin] *Users*: 1,300 in Luxembourg (Leclerc 2021b). *Writing*: Braille script. Devanagari script, primary usage. Latin script, recent informal usage, especially online on social media. Mahajani script, no longer in use, historic usage. Newa script, no longer in use, historic usage. *Worldwide*: Total users in all countries: 609,454,770 (as L1: 344,650,870; as L2: 264,803,900).

**Hungarian** [hun] *Users*: 1,120 in Luxembourg (2021). *Writing*: Braille script. Latin script, primary usage. *Worldwide*: Total users in all countries: 12,617,790 (as L1: 12,610,690; as L2: 7,100).

**Italian** [ita] *Users*: 21,000 in Luxembourg (Leclerc 2021b). *Writing*: Braille script, used since 1974. Latin script, primary usage. *Worldwide*: Total users in all countries: 67,935,480 (as L1: 64,647,380; as L2: 3,288,100).

**Kabuverdianu** [kea] *Users*: 4,000 in Luxembourg (Leclerc 2021b). *Lg Use*: Most also use French [fra]. Some also use Luxembourgish [ltz]. Some also use Standard German [deu]. *Writing*: Latin script. *Worldwide*: Total users in all countries: 1,195,500 (as L1: 1,181,500; as L2: 14,000).

**Montenegrin** [cnr] *Users*: 1,730 in Luxembourg (2021). *Writing*: Cyrillic script. Latin script. *Worldwide*: Total users in all countries: 266,520.

**Polish** [pol] *Users*: 2,850 in Luxembourg (2021). *Writing*: Braille script. Latin script, primary usage. *Worldwide*: Total users in all countries: 40,589,930 (as L1: 39,896,930; as L2: 693,000).

**Romanian** [ron] *Users*: 1,300 in Luxembourg (2021). *Writing*: Braille script. Cyrillic script, official usage in Moldova until 1991. Cyrillic script, Old Church Slavonic variant, 1688, experimental usage. Latin script, primary usage. *Worldwide*: Total users in all countries: 24,478,820 (as L1: 24,461,820; as L2: 17,000).

**Russian** [rus] *Users*: 4,500 in Luxembourg (Arefyev 2012), all users. L1 users: 2,010 (2021). *Writing*: Braille script. Cyrillic script, primary usage. *Worldwide*: Total users in all countries: 254,997,130 (as L1: 146,954,150; as L2: 107,987,980).

**Serbian** [srp] *Users*: 16,000 in Luxembourg (Leclerc 2021b). *Writing*: Braille script. Cyrillic script, primary usage. Latin script. *Worldwide*: Total users in all countries: 10,213,776 (as L1: 10,193,976; as L2: 19,800).

**Swedish** [swe] *Users*: 1,700 in Luxembourg (Leclerc 2021b). *Writing*: Braille script, used since 1917. Latin script, primary usage. *Worldwide*: Total users in all countries: 13,069,330 (as L1: 9,911,930; as L2: 3,157,400).

## Languages by Family

This index gives an alphabetical listing of the linguistic classifications used for the established languages of Luxembourg. The entries in this index represent the full path in the linguistic family tree from the highest level grouping down to the lowest. All the languages listed in the same entry are members of the same lowest-level subgroup. The referenced page contains the main entry that describes the language.

### **Indo-European, Germanic, West, English**

English [eng], [11](#)

### **Indo-European, Germanic, West, High German, German, Middle German, East Middle German**

German, Standard [deu], [12](#)

### **Indo-European, Germanic, West, High German, German, Middle German, West Middle German, Moselle Franconian**

Luxembourgish [ltz], [14](#)

### **Indo-European, Italic, Romance, Italo-Western, Western, Gallo-Iberian, Gallo-Romance, Gallo-Rhaetian, Oïl, French**

French [fra], [12](#)

### **Indo-European, Italic, Romance, Italo-Western, Western, Gallo-Iberian, Ibero-Romance, West Iberian, Castilian**

Spanish [spa], [16](#)

### **Indo-European, Italic, Romance, Italo-Western, Western, Gallo-Iberian, Ibero-Romance, West Iberian, Portuguese-Galician**

Portuguese [por], [15](#)

### **Sign language, Deaf community sign language**

German Sign Language [gsg], [12](#)

## Language Code Index

This index gives an alphabetical listing of all 24 three-letter codes that are used in this work to uniquely identify languages. The referenced page contains the main entry that describes the language. All codes listed are part of the ISO 639-3 standard; see <http://www.sil.org/iso639-3/>.

<b>als</b>	Albanian, Tosk, <a href="#">10</a>	<b>hun</b>	Hungarian, <a href="#">13</a>
<b>apc</b>	Arabic, Levantine, <a href="#">10</a>	<b>ita</b>	Italian, <a href="#">14</a>
<b>bos</b>	Bosnian, <a href="#">10</a>	<b>kea</b>	Kabuverdianu, <a href="#">14</a>
<b>cmn</b>	Chinese, Mandarin, <a href="#">10</a>	<b>ltz</b>	Luxembourgish, <a href="#">14</a>
<b>cnr</b>	Montenegrin, <a href="#">15</a>	<b>nld</b>	Dutch, <a href="#">11</a>
<b>dan</b>	Danish, <a href="#">11</a>	<b>pol</b>	Polish, <a href="#">15</a>
<b>deu</b>	German, Standard, <a href="#">12</a>	<b>por</b>	Portuguese, <a href="#">15</a>
<b>ell</b>	Greek, <a href="#">13</a>	<b>ron</b>	Romanian, <a href="#">15</a>
<b>eng</b>	English, <a href="#">11</a>	<b>rus</b>	Russian, <a href="#">16</a>
<b>fra</b>	French, <a href="#">12</a>	<b>spa</b>	Spanish, <a href="#">16</a>
<b>gsg</b>	German Sign Language, <a href="#">12</a>	<b>srp</b>	Serbian, <a href="#">16</a>
<b>hin</b>	Hindi, <a href="#">13</a>	<b>swe</b>	Swedish, <a href="#">17</a>

## Language Name Index

This index lists every name that appears in the language listings as a primary or alternate name of a language or dialect. The following abbreviations are used in the index entries: *alt.* ‘alternate name for’; *alt. dial.* ‘alternate name for a dialect of’; *dial.* ‘primary name for a dialect of’; *pej. alt.* ‘pejorative alternate name for’; and *pej. alt. dial.* ‘pejorative alternate name for a dialect of’. Each index entry resolves to the primary name for the language with which the indexed name is associated, followed by square brackets containing the unique three-letter language code from ISO 639-3. The referenced page contains the main entry that describes the language. If the language appears on a map, the entry for the primary name also lists page numbers for the maps on which the language occurs.

- Tosk Albanian**, *see* Albanian, Tosk [als], 10
- Allemand**, *alt.* German, Standard [deu], 12
- Anglais**, *alt.* English [eng], 11
- Levantine Arabic**, *see* Arabic, Levantine [apc], 10
- Mandarin Chinese**, *see* Chinese, Mandarin [cmn], 10
- Däitsch**, *alt.* German, Standard [deu], 12
- Deutsch**, *alt.* German, Standard [deu], 12
- Deutsche Gebärdensprache**, *alt.* German Sign Language [gsg], 12
- DGS**, *alt.* German Sign Language [gsg], 12
- Echternacher**, *dial.* Luxembourgish [ltz], 14
- Englesch**, *alt.* English [eng], 11
- Englisch**, *alt.* English [eng], 11
- English** [eng], 11
- Français**, *alt.* French [fra], 12
- Frankish**, *alt.* Luxembourgish [ltz], 14
- Französisch**, *alt.* French [fra], 12
- French** [fra], 12, 18
- German Sign Language** [gsg], 12, 0
- German, Standard** [deu], 12  
*see* German, Standard [deu], 12
- Kliärrwer**, *dial.* Luxembourgish [ltz], 14
- Letzburgerisch**, *alt.* Luxembourgish [ltz], 14
- Lëtzebuergesch**, *alt.* Luxembourgish [ltz], 14
- Letzburgerisch**, *alt.* Luxembourgish [ltz], 14
- Luxembourgeois**, *alt.* Luxembourgish [ltz], 14
- Luxembourgish** [ltz], 14, 18
- Luxemburgian**, *alt.* Luxembourgish [ltz], 14
- Luxembourgish**, *alt.* Luxembourgish [ltz], 14
- Minetter**, *dial.* Luxembourgish [ltz], 14
- Miseler**, *dial.* Luxembourgish [ltz], 14
- Moselle Franconian**, *alt.* Luxembourgish [ltz], 14
- Portuguese** [por], 15
- Spanish** [spa], 16
- Stater**, *dial.* Luxembourgish [ltz], 14
- Veiner**, *dial.* Luxembourgish [ltz], 14
- Weelzer**, *dial.* Luxembourgish [ltz], 14

## Bibliography

- Arefyev, A. L. 2012. *Русский язык на рубеже XX-XXI веков [The Russian Language at the Turn of the 21st Century]*. Moscow: Center of Social Forecasting and Marketing.  
[https://www.civisbook.ru/files/File/russkij\\_yazyk.pdf](https://www.civisbook.ru/files/File/russkij_yazyk.pdf). Accessed 7 February 2017.
- European Commission. 2006. *Europeans and their languages*. Eurobarometer 243. Brussels: Directorate-General Communication (European Commission). [http://ec.europa.eu/public\\_opinion/archives/ebs/ebs\\_243\\_en.pdf](http://ec.europa.eu/public_opinion/archives/ebs/ebs_243_en.pdf). Accessed 17 February 2015.
- Leclerc, J. 2021b. Luxembourg. *L'aménagement linguistique dans le monde*. Quebec City: CEFAN, Université Laval. <https://www.axl.cefan.ulaval.ca/europe/luxembourg.htm>.
- Lewis, M. P. and G. F. Simons. 2010. Assessing endangerment: Expanding Fishman's GIDS. *Revue Roumaine de Linguistique* 55(2):103–120. [http://www.lingv.ro/RRL\\_2\\_2010\\_art01Lewis.pdf](http://www.lingv.ro/RRL_2_2010_art01Lewis.pdf). Accessed 11 January 2011.
- Marcoux, R., L. Richard and A. Wolff. 2022. *Estimation des francophones dans le monde en 2022: Sources et démarches méthodologiques*. Note de recherche de l'ODSEF, Québec, Mars 2022. Quebec: Université Laval, Observatoire démographique et statistique de l'espace francophone.
- Roser, M and E. Ortiz-Ospina (eds.). 2018. Literacy. *Our world in data*. Oxford: University of Oxford. <https://ourworldindata.org/literacy>. Accessed 16 January 2018.
- Stephens, M. 1976. *Linguistic minorities in western Europe*. Llandysul, Wales: Gomer.
- Timmermans, N. 2005. *The status of sign languages in Europe*. Strasbourg: Council of Europe Publishing. [http://www.coe.int/t/e/social\\_cohesion/soc-sp/5720-0-ID2283-Langue%20signe\\_GB%20assemblee.pdf](http://www.coe.int/t/e/social_cohesion/soc-sp/5720-0-ID2283-Langue%20signe_GB%20assemblee.pdf). Accessed 18 January 2016.