

Ethnologue: Languages of Mozambique

Twenty-sixth edition data

David M. Eberhard, Gary F. Simons, and Charles D. Fennig, Editors

Based on information from the *Ethnologue*, 26th edition:

Eberhard, David M., Gary F. Simons, and Charles D. Fennig (eds.). 2023.
Ethnologue: Languages of the World. Twenty-sixth edition. Dallas, Texas:
SIL International. Online: <http://www.ethnologue.com>.

For personal use only

Permission to distribute or reuse this work (in whole or in part)
may be obtained through the Copyright Clearance Center at
<http://www.copyright.com>.

Contents

List of Abbreviations	3
How to Use This Digest	4
Country Overview	6
Language Status Profile	7
Statistical Summaries	8
Alphabetical Listing of Languages	10
Language Map	21
Languages by Population	22
Languages by Status	25
Languages by Province	29
Languages by Family	31
Language Code Index	34
Language Name Index	35
Bibliography	42

Copyright © 2023 by SIL International

All rights reserved. No part of this publication may be reproduced, redistributed, or transmitted in any form or by any means—electronic, mechanical, photocopying, recording, or otherwise—without the prior written permission of SIL International, with the exception of brief excerpts in articles or reviews.

List of Abbreviations

A	Agent in constituent word order
ACHPR	African Charter on Human Peoples' Rights (1987)
<i>alt.</i>	alternate name for
<i>alt. dial.</i>	alternate dialect name for
AOV	Agent-Object-Verb
C	Consonant in canonical syllable patterns
<i>Class</i>	Language classification
CPPDCE	Convention on the Protection and Promotion of the Diversity of Cultural Expressions (2005)
CSICH	Convention for the Safeguarding of Intangible Cultural Heritage (2003)
DBS	Deaf Bible Society
<i>dial.</i>	primary dialect name for
DOOR	Deaf Opportunity Outreach
ICCPR	International Covenant on Civil and Political Rights (1966)
km	kilometer(s)
L1 / L2	first language / second (or other additional) language
<i>Lg Dev</i>	Language development
<i>Lg Use</i>	Language use
m	meter(s)
P	Patient in constituent word order
PARADISEC	Pacific And Regional Archive for Digital Sources In Endangered Cultures
<i>pej.</i>	pejorative
pl.	plural
S	Subject in constituent word order
sg.	singular
SIL	SIL International
<i>Type</i>	Typological information
UNCRPD	United Nations Convention on the Rights of Persons with Disabilities (2006)
UNDRIP	United Nations Declaration on the Rights of Indigenous Peoples (2007)
UNESCO	United Nations Educational, Scientific, and Cultural Organization
V	Vowel in canonical syllable patterns

How to Use This Digest

This *Ethnologue* country digest provides an extract of the information about the language situation in Mozambique that is published in the 26th edition of *Ethnologue: Languages of the World* (see <http://www.ethnologue.com>), including some ways of presenting the information that are not available in the online version. The digest begins with a “Country Overview” (page 6) and “Statistical Summaries” (page 8) of languages and number of speakers by language size, by language status, and by language family.

The “Alphabetical Listing of Languages” (page 10) provides detailed information on the 49 languages listed in the *Ethnologue* for the country of Mozambique. This includes languages that are indigenous to the country, languages that have developed well-established multigenerational speaker communities after immigrating in the past, and languages that have a significant presence in the country but are not established (that is, not being transmitted to the next generation within the country). A complete language entry has the following form and content:

Primary language name [ISO 639-3 code] (Alternate names). Autonym. *Users*: Country user population. Population stability comment. Population remarks. Monolingual population. Ethnic population. *Location*: Location. *Status*: EGIDS level. Special cases. Language function in country. *Class*: Linguistic classification. Macrolanguage membership. *Dialects*: Dialect names. Intelligibility and dialect relations. Lexical similarity. *Type*: Linguistic typology information. *Lg Use*: Remarks on use of the language. Domains of use. User age range. Language attitudes. Bilingualism remarks. Use as second language. *Lg Dev*: Literacy rates. Literacy remarks. Use in education. Publications and use in media. Revitalization efforts. Language development agencies. *DLS*: Digital support. *Writing*: Scripts used. *Other*: Non-indigenous. General remarks. Religion. *Map*: Map page. *Worldwide*: Total population in all countries. Other countries where used.

See <http://www.ethnologue.com/methodology/#languagePages> for a full description of these information elements. If the autonym contains the “?” character, this indicates a complex non-Roman character that the PDF-creating software we are using is not able to render. We regret the inconvenience.

The “Language Map” (page 21) shows the locations of the listed languages. If the location of a language is given on a map, the *Map* element of the language entry indicates the page number of the map. If the language is identified on a map by name, but that name differs from the primary name in the language entry, the name on the map is given in parentheses. If the language is represented on the map by an index number, rather than by its name, the index number is given following the page number (with a colon as separator).

Many ways of finding languages are provided. “Languages by Population” (page 22) lists the languages in order of their first-language speaker populations. “Languages by Status” (page 25) lists the languages by their level of development or endangerment as measured on EGIDS, the Expanded Graded Intergenerational Disruption Scale (Lewis and Simons 2010). “Languages by

Province” (page 29) lists the top-level administrative subdivisions of Mozambique and the languages located within each. “Languages by Family” (page 31) lists the languages by their linguistic classifications. “Language Code Index” (page 34) gives an alphabetical listing of all the three-letter codes from ISO 639-3 that are used in this digest to uniquely identify languages. “Language Name Index” (page 35) lists every name that appears in the language listings as a primary or alternate name of a language or dialect. A total of 271 unique names are associated with the 49 languages described in this digest.

Finally, a listing of all the published sources cited within this digest is found in “Bibliography” (page 42). The published sources are cited using standard in-text citations enclosed in parentheses, consisting of the author’s or editor’s surname followed by the year of publication. Unpublished sources including personal communications and unpublished reports are also acknowledged when specific statements or facts are attributed to them. They are identified using in-text citations enclosed in parentheses in which the year of the communication is given first, followed by the source’s first initial and surname. In such a case, there is no corresponding entry in the bibliography.

This digest is designed for use in both digital and print formats. The cross-references are thus rendered as page numbers that are hyperlinks. When using the document in printed form, simply turn to the referenced page by number. When using it in digital form, click on the blue text to jump to the cross-referenced location.

If you believe any of the information about a language in this digest is in error or if you are able to supply missing information, please send your proposed change to the editor using one of the means given below. Provide as much information as possible about the source of your information. Full bibliographic details of published sources are especially helpful.

The preferred method of submitting corrections and additions is to join our Contributor Program by applying at <http://www.ethnologue.com/contributor-program>. With a contributor account you will be entitled to complimentary access to the website and will be able to use the Contribute tab on the page for a language or country in order to propose corrections and additions. The advantage of giving feedback in this way is that it becomes part of the public record on the website. You will also be automatically notified of the editorial action.

Alternatively, you may submit corrections and additions by e-mail to:

Ethnologue_Editor@sil.org

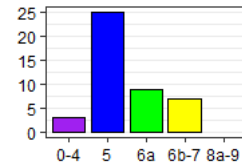
Or by post to:

Editor, Ethnologue
SIL International
7500 West Camp Wisdom Road
Dallas, TX 75236, U.S.A.

Country Overview

Name of country	Mozambique
Other names	Republic of Mozambique
Population	31,693,000 (2022 World Factbook)
Principal language	Portuguese
Literacy rate	61% (2017 UNESCO)
International conventions	ACHPR (1989), CPPDCE (2007), CSICH (2007), ICCPR (1993), UNCRPD (2012), UNDRIP (2007)
General references	Afido et al 1989

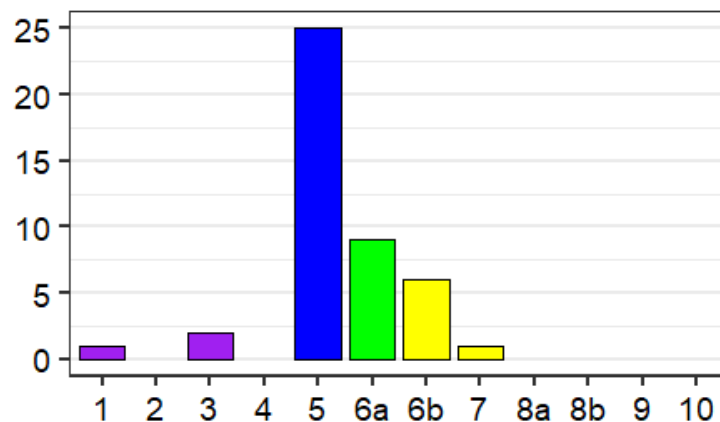
Language counts The number of established languages listed for Mozambique is 44. All are living languages. Of these, 42 are indigenous and 2 are non-indigenous. Furthermore, 3 are institutional, 25 are developing, 9 are vigorous, and 7 are in trouble. Also listed are 5 unestablished languages.



See the next page for an explanation of the summary categories for language vitality used in the above counts and graph.

Language Status Profile

The following histogram gives a graphic profile of the established languages in Mozambique with respect to their status of language development versus language endangerment. This includes all of the languages appearing in the “Alphabetical Listing of Languages” (page 10) that report an EGIDS level after *Status*; macrolanguages and unestablished languages are not included in the profile. The horizontal axis plots the estimated level of development or endangerment as measured on the EGIDS scale (Lewis and Simons 2010). The height of each bar indicates the number of languages that are estimated to be at the given level. Consult “Languages by Status” (page 25) in order to see the specific languages for each level.



The color coding of the bars in the histogram above matches the color scheme used in the summary profile graph on the preceding page. In this scheme, the EGIDS levels are grouped as follows:

- Purple = Institutional (EGIDS 0–4) — The language has been developed to the point that it is used and sustained by institutions beyond the home and community.
- Blue = Developing (EGIDS 5) — The language is in vigorous use, with literature in a standardized form being used by some though this is not yet widespread or sustainable.
- Green = Vigorous (EGIDS 6a) — The language is in vigorous use among all generations and remains unstandardized.
- Yellow = In trouble (EGIDS 6b–7) — Intergenerational transmission is in the process of being broken, but the child-bearing generation can still use the language so it is possible that revitalization efforts could restore transmission of the language in the home.
- Red = Dying (EGIDS 8a–9) — The only fluent users (if any) are older than child-bearing age, so it is too late to restore natural intergenerational transmission through the home; a mechanism outside the home would need to be developed.
- Black = Extinct (EGIDS 10) — The language is no longer used and no one retains a sense of ethnic identity associated with the language.

Statistical Summaries

The “Alphabetical Listing of Languages” (page 10) provides a detailed listing of all the languages of Mozambique. This section steps back from the detail to offer a summary view of the language situation in the country. Specifically, it offers three numerical tabulations of the living established languages of Mozambique and their users: by language size, by language status, and by language family.

Summary by language size

Table 1 summarizes the distribution of living established languages in Mozambique by number of L1 speakers. The *Population range* column categorizes the sizes of the languages by order of magnitude (in terms of the number of digits in the population of first-language speakers). Consult “Languages by Population” (page 22) for a listing of the specific languages in each range category.

The *Count* column gives the number of living established languages within the specified population range. The *Percent* column gives the share of the count for that population range as a percentage of the total number of languages given at the bottom of the Count column. The *Cumulative* column gives the cumulative sum of the percentage of languages going from top to bottom in the column.

The *Total* column gives the total L1 population of all the languages in the given range category. The second *Percent* column gives the percentage of the total country population as estimated at the bottom of the Total column. Note that if the table has a row for Unknown, representing languages for which the *Ethnologue* does not have a population estimate, the calculation of population percentage is not able to take those languages into account. The final *Cumulative* column gives the cumulative sums of the population percentages going from top to bottom in the column.

Table 1: Distribution of languages by number of first-language speakers

Population range	Living languages			Number of speakers		
	Count	Percent	Cumulative	Total	Percent	Cumulative
1,000,000 to 9,999,999	9	20.5	20.5%	22,530,000	71.05193	71.05193%
100,000 to 999,999	23	52.3	72.7%	8,927,000	28.15271	99.20465%
10,000 to 99,999	8	18.2	90.9%	236,800	0.74679	99.95143%
1,000 to 9,999	4	9.1	100.0%	15,400	0.04857	100.00000%
<i>Totals</i>	44	100.0		31,709,200	100.00000	

Summary by language status

Table 2 summarizes the distribution of living established languages in Mozambique by their status in terms of language development or language endangerment. The *EGIDS* column categorizes the

languages by their level on the EGIDS scale. Consult “Languages by Status” (page 25) for a listing of the specific languages that have been assigned to each level. Note that the EGIDS level reported here is for the status of the language in Mozambique. Languages that are also used in other countries may be assigned to a different EGIDS level in those countries.

The next six columns are as in Table 1. In addition, the *Mean* column gives the average L1 population of all the languages with the given EGIDS level and the *Median* column gives the median L1 population for the languages at that level, that is, half of the languages at that level have a higher population and half have a lower population. If there are any languages with an unknown population, these are ignored in the calculation of the mean and the median.

Table 2: Distribution of languages by vitality status

EGIDS	Living languages			Number of speakers				
	<i>Count</i>	<i>Percent</i>	<i>Cumulative</i>	<i>Total</i>	<i>Percent</i>	<i>Cumulative</i>	<i>Mean</i>	<i>Median</i>
1	1	2.3	2.3%	5,260,000	16.5882	16.5882%	5,260,000	5,260,000
3	2	4.5	6.8%	512,000	1.6147	18.2029%	256,000	256,000
5	25	56.8	63.6%	22,670,900	71.4963	89.6992%	906,836	525,000
6a	9	20.5	84.1%	3,100,000	9.7763	99.4755%	344,444	368,000
6b	6	13.6	97.7%	161,800	0.5103	99.9858%	26,967	23,400
7	1	2.3	100.0%	4,500	0.0142	100.0000%	4,500	4,500
<i>Totals</i>	44	100.0		31,709,200	100.0000			

Summary by language family

The genealogical classifications given in the language entries of the “Alphabetical Listing of Languages” (page 10) name 3 different top-level groups. Table 3 summarizes the distribution of living established languages and their L1 populations within these families. The columns are as for table 2, with the exception that *Cumulative* is excluded since there is no inherent ordering of the families.

Table 3: Distribution of languages by language family

Language family	Living languages		Number of speakers			
	<i>Count</i>	<i>Percent</i>	<i>Total</i>	<i>Percent</i>	<i>Mean</i>	<i>Median</i>
Indo-European	2	4.5	5,262,400	16.6	2,631,200	2,631,200
Niger-Congo	41	93.2	26,296,800	82.9	641,385	330,000
Sign language	1	2.3	150,000	0.5	150,000	150,000
<i>Totals</i>	44	100.0	31,709,200	100.0		

Alphabetical Listing of Languages

Barwe [bwg] (Balke, Chirue, Cibalke, Rue). *Users*: 34,000 in Mozambique (2017). *Location*: Manica province. *Status*: 6b* (Threatened). *Class*: Niger-Congo, Atlantic-Congo, Volta-Congo, Benue-Congo, Bantoid, Southern, Narrow Bantu, Central, N, Senga-Sena (N.44). *Dialects*: None known. Probably good comprehension of Nyungwe [nyu] or Sena [seh]. *DLS*: Still. *Writing*: Latin script. *Map*: 21:32. *Worldwide*: Also indigenous in: Zimbabwe.

Chinese, Mandarin [cmn]. *Users*: 25,000 in Mozambique (2017). *Status*: Unestablished. *Class*: Sino-Tibetan, Chinese. *Type*: SVO; prepositions; noun head final; 6 full (concrete meaning) word classes; no articles; passives; 24 consonants, 8 vowels, 6 diphthongs; tonal (4 phonemic tones). *Lg Dev*: Fully developed. *Bible*: 1874–1983. *Writing*: Bopomofo script, used since 1913, revised in 1920 and 1932, mainly used in Taiwan. Braille script. Han script, Simplified variant, used since 1956, official in Mainland China (1956) and Singapore (1969), also used elsewhere. Han script, Traditional variant, used since mid-19th century, official in Taiwan, also used elsewhere. Latin script. *Other*: Non-indigenous. *Worldwide*: Total users in all countries: 1,138,222,350 (as L1: 939,237,350; as L2: 198,985,000). Global EGIDS level: 0 (International). Indigenous in: China. Also established in 17 other countries and unestablished in 60 more.

Chopi [cce] (Cicopi, Copi, Shichopi, Shicopi, Shilenge, Tschopi, Txitxopi, Txopi, Xilenge, shiChopi). Autonym: Chichopi. *Users*: 1,100,000 (2017). *Location*: Gaza province: coastal strip between Chidunguela and Inharrime; Inhambane province: south Zavala district; Maputo province. Center is Quissico. *Status*: 5* (Developing). *Class*: Niger-Congo, Atlantic-Congo, Volta-Congo, Benue-Congo, Bantoid, Southern, Narrow Bantu, Central, S, Copi (S.61). *Dialects*: Copi, Ndonge, Lengue (Kilenge, Lenge), Tonga, Lambwe, Khambani. Many dialects; all mutually inherently intelligible. Lexical similarity: 44% with Gitonga [toh]. *Lg Use*: Also use Tswa [tsc], with about 50% of the population understanding it. *Lg Dev*: Literacy rate in L2: 10%. *Dictionary*. *Grammar*. *Bible*: 2017. *DLS*: Ascending (0.16). *Writing*: Latin script. *Other*: Distinct from Chopi (Dhopaluo), a dialect of Acholi [ach] of Uganda. *Map*: 21:38.

Chuwabu [chw] (Chichwabo, Chuabo, Chuwabo, Chwabo, Cicuabo, Cuabo, Cuwabo, Echuabo, Echuwabu, Ecwabo, Etxuwabo, Txuwabo, Xuabo). Autonym: Echuwabo. *Users*: 970,000 (2017). *Location*: Zambezia province: central coast between Mlanje and Quelimane mountains. *Status*: 5 (Developing). *Class*: Niger-Congo, Atlantic-Congo, Volta-Congo, Benue-Congo, Bantoid, Southern, Narrow Bantu, Central, P, Makhuwa (P.34). *Dialects*: Central Chuwabo, Nyaringa, Marale, Karungu, Maindo. Lexical similarity: 78% between Chuwabo of Makusi district and Marrare. *Lg Use*: All domains except education. Used by all. Some also use Portuguese [por], mostly in urban areas (Guérois 2015). *Lg Dev*: *Dictionary*. *Grammar*. *Bible*: 1978–2003. *DLS*: Emerging (0.11). *Writing*: Latin script. *Other*: Traditional religion, Christian, Muslim. *Map*: 21:17.

Dema [dmx]. *Users*: 11,000 (2017). Population displaced during Cabora Bassa Dam construction. *Location*: Tete province: near Cahora Bassa dam, north of Zimbabwe. *Status*: 6b* (Threatened). *Class*: Niger-Congo, Atlantic-Congo, Volta-Congo, Benue-Congo, Bantoid, Southern, Narrow Bantu, Central, S, Shona (S.10). *Lg Use*: Strong pressure to assimilate to Nyungwe [nyu]. *DLS*: Still. *Map*: 21:27.

French [fra]. Autonym: français. *Users*: 98,800 in Mozambique, all users. L1 users: 2,400 in Mozambique (2022 Joshua Project). L2 users: 96,400 (Marcoux et al 2022). *Status*: 5* (Dispersed). *Class*: Indo-European, Italic, Romance, Italo-Western, Western, Gallo-Iberian, Gallo-Romance, Gallo-Rhaetian, Oïl, French. *Type*: SVO; prepositions; noun head final for common adjectives, numbers, possessives, but most attributive adjectives come after the noun; gender (masculine/feminine); definite and indefinite articles; verb affixes mark person, number; passives; tense; comparatives; 20 consonant and 14 vowel phonemes; non-tonal; syllable-timed stress. *Lg Dev*: Fully developed. Bible: 1530–2000. *Writing*: Braille script. Duployan shorthand. Latin script, primary usage. *Other*: Non-indigenous. *Worldwide*: Total users in all countries: 309,804,220 (as L1: 80,770,190; as L2: 229,034,030). Global EGIDS level: 0 (International). Indigenous in: Andorra, Belgium, France, Luxembourg, Monaco, Switzerland. Also established in 95 other countries and unestablished in 24 more.

German, Standard [deu]. Autonym: Deutsch. *Users*: 4,000 in Mozambique (2017). *Status*: Unestablished. *Class*: Indo-European, Germanic, West, High German, German, Middle German, East Middle German. *Type*: SVO; prepositions; noun head final; gender (masculine/feminine/neuter); definite and indefinite articles; case-marking (4 cases); verb affixes mark person, number; passives; tense; comparatives; 22 consonants, 22 vowels, 3 diphthongs; non-tonal; stress on first syllable of the root. *Lg Dev*: Fully developed. Bible: 1466–2016. *Writing*: Braille script. Latin script, primary usage. Latin script, Fraktur variant, used until 1940. Runic script, no longer in use. *Other*: Non-indigenous. *Worldwide*: Total users in all countries: 133,245,880 (as L1: 75,282,080; as L2: 57,963,800). Global EGIDS level: 1 (National). Indigenous in: Austria, Belgium, Czechia, Denmark, Germany, Italy. Also established in 40 other countries and unestablished in 22 more.

Greek [ell]. *Users*: 12,700 in Mozambique (2017). *Status*: Unestablished. *Class*: Indo-European, Greek, Attic. *Type*: SVO; prepositions; noun head final; gender (masculine/feminine/neuter); definite and indefinite articles; case-marking (3 cases); verb affixes mark person, number; passives (active, medio-passive, passive); tense and aspect; comparatives; 18 consonant and 5 vowel phonemes; non-tonal; free stress. *Lg Dev*: Fully developed. Bible: 1840–1994. *Writing*: Braille script. Cyrillic script, used in Ukraine. Greek script, primary usage. *Other*: Non-indigenous. *Worldwide*: Total users in all countries: 13,088,220 (as L1: 12,992,220; as L2: 96,000). Global EGIDS level: 1 (National). Indigenous in: Albania, Greece. Also established in: Australia, Cyprus, Egypt, Hungary, Italy, Romania, Turkey, Ukraine. Unestablished in: Argentina, Armenia, Austria, Belgium, Bosnia and Herzegovina, Brazil, Bulgaria, Canada, Chile, Czechia, Democratic Republic of the Congo, Denmark, Djibouti, Finland, Germany, Israel, Jordan, Kazakhstan, Kuwait, Kyrgyzstan, Lebanon, Libya, Luxembourg, Malawi, Mexico, Netherlands, New Zealand, North Macedonia, Norway, Panama, Russian Federation,

Sierra Leone, South Africa, Spain, Sweden, Switzerland, United Kingdom, United States, Uruguay, Uzbekistan, Zambia, Zimbabwe.

Kabuverdianu [kea]. Autonym: Kabuverdianu, Kriol. *Users*: 2,000 in Mozambique (2017). *Status*: Unestablished. *Class*: Creole, Portuguese based. *Lg Use*: Most also use Portuguese [por]. *Lg Dev*: Literature. Newspapers. Periodicals. Radio. TV. Videos. Dictionary. Grammar. Texts. Bible portions: 2004–2013. *Writing*: Latin script. *Other*: Non-indigenous. *Worldwide*: Total users in all countries: 1,195,500 (as L1: 1,181,500; as L2: 14,000). Global EGIDS level: 3 (Wider communication). Indigenous in: Cape Verde Islands. Also established in: Portugal, São Tomé e Príncipe, United States. Unestablished in: Angola, Argentina, Brazil, Canada, France, Gabon, Germany, Guinea-Bissau, Italy, Luxembourg, Netherlands, Senegal, Spain, Sweden, Switzerland.

Kokola [kzn] (iKokola). Autonym: iKokola. *Users*: 163,000 in Mozambique (2017). *Location*: Zambezia province: west. *Status*: 5* (Developing). *Class*: Niger-Congo, Atlantic-Congo, Volta-Congo, Benue-Congo, Bantoid, Southern, Narrow Bantu, Central, P, Makhuwa (P.31). *Type*: SVO. *Lg Dev*: NT: 2018. *Writing*: Latin script. *Map*: 21:23. *Worldwide*: Total users in all countries: 297,000. Also indigenous in: Malawi.

Korean [kor]. *Users*: 43,000 in Mozambique (2017). *Status*: Unestablished. *Class*: Koreanic. *Lg Dev*: Fully developed. Bible: 1911–1993. *Writing*: Braille script. Hangul and Han scripts, primary usage. Latin script, used for maps and signs. *Other*: Non-indigenous. *Worldwide*: Total users in all countries: 81,740,540 (as L1: 81,721,540; as L2: 19,000). Global EGIDS level: 1 (National). Indigenous in: North Korea, South Korea. Also established in: China, Japan, Russian Federation, United States, Uzbekistan. Unestablished in: Argentina, Australia, Austria, Bahrain, Belarus, Brazil, Brunei, Cambodia, Canada, China–Taiwan, Denmark, France, Germany, Guam, India, Indonesia, Kazakhstan, Kyrgyzstan, Libya, Madagascar, Malaysia, Mexico, Mongolia, Netherlands, New Zealand, Northern Mariana Islands, Norway, Paraguay, Philippines, Saudi Arabia, Singapore, Spain, Sweden, Tajikistan, Thailand, Turkmenistan, Ukraine, United Arab Emirates, United Kingdom, Vietnam.

Koti [eko] (Akoti, Angoche, Angoje, Angoxe, Coti). Autonym: Ekoti. *Users*: 140,000 (2017). *Location*: Nampula province: Angoche district, Angoche island coast area; Nampula city enclave. *Status*: 6a (Vigorous). *Class*: Niger-Congo, Atlantic-Congo, Volta-Congo, Benue-Congo, Bantoid, Southern, Narrow Bantu, Central, P, Makhuwa (P.311). *Dialects*: None known. A separate language within the Makhuwa group. *Type*: Lexicon heavily influenced by Swahili [swh]. *Lg Use*: Home, market, trading. Used by all. Also use Makhuwa [vmw]. Also use Portuguese [por]. Also use Swahili [swh]. Used as L2 by Natthembo [nte]. *Lg Dev*: Literacy rate in L2: 20% in Portuguese [por]. Dictionary. Grammar. NT: 2021. *DLS*: Emerging (0.04). *Writing*: Arabic script, Naskh variant, plans for future development using this script. Latin script, primary usage. *Other*: Muslim. *Map*: 21:14.

Kunda [kdn] (Chicunda, Chikunda, Cikunda, Mu Chikunda). Autonym: Mu Chikunda. *Users*: 11,000 in Mozambique (2017). *Location*: Tete province: Luangwe and Zambezi rivers' confluence area. *Status*: 6b* (Threatened). *Class*: Niger-Congo, Atlantic-Congo, Volta-Congo,

Benue-Congo, Bantoid, Southern, Narrow Bantu, Central, N, Senga-Sena (N.42). *Lg Dev*: NT: 2009. *Writing*: Latin script. *Other*: Different from Kunda, a dialect of Nyanja [nya], and Kunda dialect of Lusengo [lse] in Democratic Republic of the Congo. Traditional religion, Christian. *Map*: 21:29. *Worldwide*: Total users in all countries: 162,760. Global EGIDS level: 6a (Vigorous). Also indigenous in: Zambia, Zimbabwe.

Lolo [llb]. Autonym: iLolo. *Users*: 330,000 (2017). *Location*: Zambezia province. *Status*: 5* (Developing). *Class*: Niger-Congo, Atlantic-Congo, Volta-Congo, Benue-Congo, Bantoid, Southern, Narrow Bantu, Central, P, Makhuwa (P.31). *Dialects*: None known. Similar to Kokola [kzn], Marenje, [vmr] and Takwane [tke]. *Lg Dev*: NT: 2017. *DLS*: Emerging (0.02). *Writing*: Latin script. *Map*: 21:20.

Lomwe [ngl] (Acilowe, Alomwe, Chilowe, Cilowe, Ilomwe, Ingulu, Lomue, Ngulu, Nguru, Walomwe, West Makhuwa, Western Makua). Autonym: Elomwe. *Users*: 2,520,000 (2017). *Location*: Nampula and Niassa provinces: Alto Molocue; Zambezia province. *Status*: 5* (Developing). *Class*: Niger-Congo, Atlantic-Congo, Volta-Congo, Benue-Congo, Bantoid, Southern, Narrow Bantu, Central, P, Makhuwa (P.32). *Dialects*: None known. Reportedly most similar to Makhuwa [vmw] and Chuwabu [chw]. *Lg Use*: Used as L2 by Manyawa [mny]. *Lg Dev*: Dictionary. Bible: 2017. *DLS*: Ascending (0.18). *Writing*: Latin script. *Other*: Different from Ngulu (Kingulu) of Tanzania. Traditional religion, Christian, Muslim. *Map*: 21:11.

Maindo [cwb] (Chwambo). *Users*: 43,000 (2017). *Location*: Zambezia province: Micaune, Zambezi river mouth. *Status*: 6b* (Threatened). *Class*: Niger-Congo, Atlantic-Congo, Volta-Congo, Benue-Congo, Bantoid, Southern, Narrow Bantu, Central, P, Makhuwa (P.34). *Dialects*: Mitange, Badoni. Lexical similarity: 84% with Chuwabu [chw]. *DLS*: Still. *Writing*: Unwritten. *Other*: Traditional religion, Christian, Muslim. *Map*: 21:18.

Makhuwa [vmw] (Central Makhuwa, Emakhuwa-Makhuwana, Emakua, Macua, Makhuwa-Makhuwana, Makhuwwa of Nampula, Makoane, Makua, Maquoua). Autonym: Emakhuwa. *Users*: 3,960,000 in Mozambique (2017). *Location*: Nampula province: south of Meetto area; Cabo Delgado, Niassa, and Zambezia provinces: border areas. *Status*: 5* (Developing). *Class*: Niger-Congo, Atlantic-Congo, Volta-Congo, Benue-Congo, Bantoid, Southern, Narrow Bantu, Central, P, Makhuwa (P.31). *Dialects*: Emwaja, Naharra (Emathipane, Enaharra, Maharra, Nahara), Enyara, Central Makua (Emakhuwana, Makhuwana, Makuana), Empamela (Nampamela), Enlai (Mulai). *Lg Use*: Used as L2 by Koti [eko], Mwani [wmw]. *Lg Dev*: Dictionary. Bible: 1982–2000. *DLS*: Ascending (0.24). *Writing*: Latin script. *Other*: Traditional religion, Christian, Muslim. *Map*: 21:12. *Worldwide*: Total users in all countries: 3,974,400. Also established in: Comoros.

Makhuwa-Marrevone [xmc] (Coastal Makhuwa, Emaka, Maca, Maka, Makua-Marevone, Marevone, Marrevone, South Maca). *Users*: 438,000 (2017). *Location*: Nampula province: inland from Angoche and Moma; Zambezia province: Nova Nabori inland to Amela. *Status*: 6a* (Vigorous). *Class*: Niger-Congo, Atlantic-Congo, Volta-Congo, Benue-Congo, Bantoid, Southern, Narrow Bantu, Central, P, Makhuwa (P.31). *Dialects*: Makhuwana (Emakhuwana), Enlai, Nampamela (Empamela). *Lg Use*: Used as L2 by Nathembo [nte]. *DLS*: Still. *Writing*:

Unwritten. *Other*: Traditional religion, Christian, Muslim. *Map*: 21:15.

Makhuwa-Meetto [mgh] (Emeto, Medo, Meetto, Meto, Metto, Mêto). Autonym: Imeetto. *Users*: 1,170,000 in Mozambique (2017). *Location*: Cabo Delgado and Niassa provinces: Pemba coast inland; Nampula province: coast north of Nacala. *Status*: 5* (Developing). *Class*: Niger-Congo, Atlantic-Congo, Volta-Congo, Benue-Congo, Bantoid, Southern, Narrow Bantu, Central, P, Makhuwa (P.31). *Dialects*: Lexical similarity: 81%–88% with Makhuwa-Saka [xsq], 78%–82% with the Nahara dialect of Makhuwa-Marrevone [xmc], 78%–80% with Makhuwa [vmw], 66%–68% with Lomwe [ngl]. *Lg Dev*: Dictionary. Grammar. NT: 2009–2021. *DLS*: Ascending (0.31). *Writing*: Latin script. *Other*: Traditional religion, Muslim. *Map*: 21:3. *Worldwide*: Total users in all countries: 1,748,800. Also indigenous in: Tanzania. Also established in: Mayotte.

Makhuwa-Moniga [mhm] (Emakhuwa-Emoniga, Emoniga, Moniga). *Users*: 440,000 (2017). *Location*: Zambezia province: Indian Ocean coast and inland past Mocubela. *Status*: 6a* (Vigorous). *Class*: Niger-Congo, Atlantic-Congo, Volta-Congo, Benue-Congo, Bantoid, Southern, Narrow Bantu, Central, P, Makhuwa (P.341). *Dialects*: None known. Lexical similarity: 56% with Lomwe [ngl]. *DLS*: Still. *Writing*: Latin script. *Other*: Traditional religion, Christian, Muslim. *Map*: 21:16.

Makhuwa-Saka [xsq] (Esaaka, Esaka, Isaanga, Ishanga, Saaka, Saanga, Saka, Sanga). *Users*: 432,000 (2017). *Location*: Cabo Delgado and Nampula provinces: border area, Lurio river. *Status*: 6a* (Vigorous). *Class*: Niger-Congo, Atlantic-Congo, Volta-Congo, Benue-Congo, Bantoid, Southern, Narrow Bantu, Central, P, Makhuwa (P.31). *Dialects*: Saka (Esaaka), Rati (Erati). Lexical similarity: 81%–88% with Makhuwa-Meetto [mgh], 78%–80% with Makhuwa [vmw]. *Lg Use*: Positive attitudes. *DLS*: Still. *Writing*: Unwritten. *Other*: Traditional religion, Christian, Muslim. *Map*: 21:9.

Makhuwa-Shirima [vmk] (Chirima, Echirima, Emakhua Eshirima, Emakhuwa Echirima, Eshirima, Makhuwa-Exirima, Makhuwa-Niassa, Makhuwa-Xirima, Shirima, West Makua, Xirima). Autonym: Emakhua Exirima. *Users*: 729,000 (2017). *Location*: Nampula province: west; Niassa province; Zambezia province: northwest border. *Status*: 5* (Developing). *Class*: Niger-Congo, Atlantic-Congo, Volta-Congo, Benue-Congo, Bantoid, Southern, Narrow Bantu, Central, P, Makhuwa (P.31). *Dialects*: None known. Probably not intelligible of Makhuwa-Meetto [mgh] or Lomwe [ngl]. *Lg Dev*: NT: 2000. *DLS*: Emerging (0.02). *Writing*: Latin script. *Map*: 21:10.

Makonde [kde] (Chimakonde, Chinimakonde, Cimakonde, Konde, Maconde, Makonda, Matambwe, Shimakonde). Autonym: Chimakonde. *Users*: 525,000 in Mozambique (2017). *Location*: Cabo Delgado province: Mueda (Maviha dialect). *Status*: 5* (Developing). *Class*: Niger-Congo, Atlantic-Congo, Volta-Congo, Benue-Congo, Bantoid, Southern, Narrow Bantu, Central, P, Yao (P.23). *Dialects*: Vadonde (Donde, Ndonde), Vamwalu (Mwalu), Vamwambe (Mwambe), Vamakonde (Makonde), Maviha (Chimaviha, Kimawiha, Mabiha, Mavia, Mawia, Mawiha). *Lg Use*: Used as L2 by Makwe [ymk]. *Lg Dev*: Dictionary. Grammar. Texts. NT: 2013. *Writing*: Latin script. *Other*: Reserved toward outsiders. Muslim, Christian, traditional

religion. *Map: 21:4. Worldwide:* Total users in all countries: 1,995,000. Also indigenous in: Tanzania.

Makwe [ymk] (Kimakwe, Macue, Palma). *Users:* 50,000 in Mozambique (2017). *Location:* Cabo Delgado province: coast, Tanzania border area south to Quionga and Palma; Ruvuma river area to Pundanhar. *Status:* 6b* (Threatened). *Class:* Niger-Congo, Atlantic-Congo, Volta-Congo, Benue-Congo, Bantoid, Southern, Narrow Bantu, Central, G, Swahili (G.402). *Dialects:* Coastal Makwe (Palma), Interior Makwe. Not inherently intelligible with Swahili [swh]. *Lexical similarity:* 60% with Swahili [swh], 57% with Mwani [wmw], 48% with Yao [yao]. *Lg Use:* Some also use Mwani [wmw], especially men. Some also use Portuguese [por], especially those with schooling, for reading. Some also use Swahili [swh], especially men. Those with schooling can read Swahili. Also use Makonde [kde]. *Lg Dev:* Literacy rate in L2: 20%. Motivation for literacy is high. *Grammar. DLS:* Still. *Other:* Muslim. *Map: 21:5. Worldwide:* Total users in all countries: 147,700. Also indigenous in: Tanzania (Maraba).

Manyawa [mny]. *Users:* 219,000 (2017). 85% monolingual in Lugela District. *Location:* Zambezia province: Lugela district. *Status:* 6a (Vigorous). *Class:* Niger-Congo, Atlantic-Congo, Volta-Congo, Benue-Congo, Bantoid, Southern, Narrow Bantu, Central, P, Makhuwa (P.31). *Dialects:* None known. *Lexical similarity:* 69% with Takwane [tke]. *Lg Use:* Used by all. Also use Lomwe [ngl]. *Lg Dev:* Texts. *DLS:* Emerging (0.01). *Writing:* Unwritten. *Map: 21:21.*

Manyika [mxc] (Chimanyika, Manika). *Users:* 146,000 in Mozambique (2017). *Location:* Manica province: north of Ndau, west of Tewe; Tete province: southwest. *Status:* 5* (Developing). *Class:* Niger-Congo, Atlantic-Congo, Volta-Congo, Benue-Congo, Bantoid, Southern, Narrow Bantu, Central, S, Shona (S.13). *Dialects:* Bocha (Boka), Bunji, Bvumba, Domba, Guta, Here, Hungwe, Jindwi, Karombe, Nyamuka, Nyatwe, Unyama. *Lg Dev:* NT: 1908. *Writing:* Latin script. *Other:* Traditional religion, Christian. *Map: 21:31. Worldwide:* Total users in all countries: 551,000. Also indigenous in: Zimbabwe.

Marenje [vmr] (Emarendje, Marendje). *Users:* 588,000 (2017). *Location:* Zambezia province. *Status:* 6a* (Vigorous). *Class:* Niger-Congo, Atlantic-Congo, Volta-Congo, Benue-Congo, Bantoid, Southern, Narrow Bantu, Central, P, Makhuwa (P.31). *Dialects:* None known. Related to Lolo [llb] and Kokola [kzn]. *DLS:* Still. *Writing:* Unwritten. *Map: 21:24.*

Mozambican Sign Language [mzy]. *Users:* 150,000 (2021 DBS/DOOR/SIL). Estimated 90,000–180,000 deaf signers, based on 0.3%–0.6% of total population. *Location:* Scattered. In at least 3 large cities: Beira, Maputo, and Nampula. *Status:* 5 (Developing). *Class:* Sign language, Deaf community sign language. *Dialects:* Some dialectal variation. Standardization efforts are in progress (1999). Not related to or based on Portuguese [por] nor Portuguese Sign Language [psr]. *Lg Use:* Used by all. *Lg Dev:* Dictionary. Agency: Mozambique National Association of the Deaf (ASUMO). *DLS:* Emerging (0.01).

Mwani [wmw] (Ibo, Muane, Mwane, Mwaní, Namwaní, Quimuane). Autonym: Kimwani. *Users:* 166,000 in Mozambique, all users. L1 users: 146,000 in Mozambique (2017). L2 users:

20,000. *Location*: Cabo Delgado province: coast north of Pemba, Arimba to Palma, Ibo and Mocimboa da Praia; Querimba archipelago offshore. *Status*: 5* (Developing). *Class*: Niger-Congo, Atlantic-Congo, Volta-Congo, Benue-Congo, Bantoid, Southern, Narrow Bantu, Central, G, Swahili (G.403). *Dialects*: Wibo (Kiwibo), Kisanga (Kikisanga, Quissanga), Nkojo (Kinkojo), Nsimbwa (Kinsimbwa). Not intelligible of Swahili [swh]. Kiwibo is prestige dialect. Kinsimbwa, the northernmost Mocimboa da Praia dialect, is inherently intelligible with others, even though it is the most distinct. Lexical similarity: 60% with Swahili [swh], 48% with Yao [yao]. *Lg Use*: Home, community, religion, commerce. Also use Makhuwa [vmw]. Also use Portuguese [por]. Also use Swahili [swh]. Used as L2 by Makwe [ymk]. *Lg Dev*: Literacy rate in L2: 30%–40% in Arabic, 30%–40% in Portuguese [por]. NT: 2013. *DLS*: Emerging (0.04). *Writing*: Arabic script, Naskh variant. Latin script. *Other*: Muslim. *Map*: 21:7. *Worldwide*: Total users in all countries: 167,150 (as L1: 147,150; as L2: 20,000). Unestablished in: Canada.

Nathembo [nte] (Enatthembo, Esakaji, Esangaje, Esangaji, Eshangáaji, Sakaji, Sakati, Sanagage, Sangaje, Sangaji, Sankaji, “Edheidhei” *pej.*, “Etteittei” *pej.*, “Theithej” *pej.*). *Users*: 4,500 (2018 Endangered Languages Archive), decreasing. Ethnic population: 56,000 (2023 Joshua Project). *Location*: Nampula province: Mogincual, Naatthembo, and Nakonya villages. The center is Naatthembo. *Status*: 7 (Shifting). *Class*: Niger-Congo, Atlantic-Congo, Volta-Congo, Benue-Congo, Bantoid, Southern, Narrow Bantu, Central, P, Makhuwa (P.312). *Lg Use*: Adults only. Most shifting to Makhuwa-Marrevone [xmc]. Many shifting to Koti [eko]. A few also use Portuguese [por]. *DLS*: Still. *Other*: Similar to Makhuwa [vmw] and Swahili [swh]. Sakaji is a place name. *Map*: 21:13.

Ndau [ndc] (Cindau, Ndzawu, Njao, Sofala, Southeast Shona). Autonym: Chindau. *Users*: 730,000 in Mozambique (2017). *Location*: Inhambane and Gaza provinces; Manica and Sofala provinces: south of Beira. *Status*: 5* (Developing). *Class*: Niger-Congo, Atlantic-Congo, Volta-Congo, Benue-Congo, Bantoid, Southern, Narrow Bantu, Central, S, Shona (S.15). *Dialects*: Ndau (Chindau), Shanga (Changa, Chichanga, Chisenji, Chixanga, Cimashanga, Mashanga, Senji, Xanga), Danda (Cidanda, Cindanda, Ndanda, Vadanda, Watande), Dondo (Chibabava, Cidondo, Wadondo), Gova (Cigova). Divergent from Union Shona [sna]. Ndau (Gova) [sna] in Mozambique is more similar to Ndau, but in Zambia and Zimbabwe, Ndau is more similar to the Korekore dialect of Shona. Lexical similarity: 92% between Danda and Dondo dialects, 85% between Dondo and Shanga dialects; 74%–81% between Ndau dialects and Manyika [mxc]. *Lg Use*: Used as L2 by Sena [seh]. *Lg Dev*: Bible: 1985–2009. *DLS*: Ascending (0.18). *Writing*: Latin script. *Other*: Other geographical or ethnic names: Dzika, Hijo, Buzi (Buji), Tomboji, and Mukwilo. Traditional religion, Christian. *Map*: 21:34. *Worldwide*: Total users in all countries: 1,530,000. Also indigenous in: Zimbabwe.

Nsenga [nse] (Chinsenga, Cinsenga, Senga). Autonym: Chinsenga. *Users*: 206,000 in Mozambique (2017). *Location*: Tete province: north of Zambezi river. *Status*: 5* (Developing). *Class*: Niger-Congo, Atlantic-Congo, Volta-Congo, Benue-Congo, Bantoid, Southern, Narrow Bantu, Central, N, Senga-Sena (N.41). *Lg Dev*: Grammar. NT: 1923–2016. *Writing*: Latin script. *Other*: Different from Senga dialect of Tumbuka [tum] of Zambia,

Malawi, and Tanzania. Traditional religion, Christian. *Map*: 21:28. *Worldwide*: Total users in all countries: 627,100. Also indigenous in: Zambia, Zimbabwe.

Nyanja [nya] (Chinyanja, CiNyanja, Cinianja). Autonym: Chicheŵa. *Users*: 1,290,000 in Mozambique (2017). *Location*: Niassa, Tete, and Zambezia provinces. Macanga district, Tete (Angoni and Chewa dialects); Niassa province: Lago and Sanga (Ngoni dialect); Niassa and Tete, along Lake Niassa (Nyanja dialect). *Status*: 5* (Dispersed). *Class*: Niger-Congo, Atlantic-Congo, Volta-Congo, Benue-Congo, Bantoid, Southern, Narrow Bantu, Central, N, Chewa-Nyanja (N.31). *Dialects*: Chewa (Cewa, Chichewa, Cicewa), Ngoni (Cingoni), Nyanja (Cinyanja), Angoni, Nyasa (Nyasa-Cewa). *Type*: SVO. *Lg Use*: Used as L2 by Phimbi [phm], Sena [seh]. *Lg Dev*: Newspapers. Radio. Dictionary. Grammar. Bible: 1905–1998. *Writing*: Braille script. Latin script, primary usage. *Other*: Ngoni people in Angonia District of Tete Province in western Mozambique have shifted to Nyanja. Traditional religion, Christian. *Map*: 21:1. *Worldwide*: Total users in all countries: 14,380,700. Global EGIDS level: 3 (Wider communication). Also indigenous in: Malawi (Chichewa), Zambia (Chichewa). Also established in: Zimbabwe (Chichewa). Unestablished in: Eswatini (Chichewa).

Nyungwe [nyu] (Chinyungwe, Chinyungwi, Nyongwe, Teta, Tete, Yungwe). Autonym: Cinyungwe. *Users*: 490,000 (2017 census). *Location*: Manica province: Luenha river east bank, east from Changara; Tete province: Zambezi river banks. *Status*: 3 (Wider communication). Nyungwe is one of the recognized national languages during postcolonial period in 1975. Used as a trade language throughout Tete province. *Class*: Niger-Congo, Atlantic-Congo, Volta-Congo, Benue-Congo, Bantoid, Southern, Narrow Bantu, Central, N, Senga-Sena (N.43). *Dialects*: None known. Reportedly similar to Sena [seh]. *Lg Use*: Used as L2 by Phimbi [phm]. *Lg Dev*: Dictionary. Grammar. NT: 2019. *DLS*: Emerging (0.11). *Writing*: Latin script. *Map*: 21:25.

Phimbi [phm] (Pimbi). *Users*: 12,800 (2017). *Location*: Tete province: Zambezi river banks northwest of Tete city. *Status*: 6b* (Threatened). *Class*: Niger-Congo, Atlantic-Congo, Volta-Congo, Benue-Congo, Bantoid, Southern, Narrow Bantu, Central, N, Senga-Sena (N.41). *Dialects*: None known. Reportedly similar to Sena [seh]. *Lg Use*: Also use Chichewa [nya]. Also use Nyungwe [nyu]. *DLS*: Emerging (0.01). *Map*: 21:26.

Portuguese [por] (Português). Autonym: Português. *Users*: 13,820,000 in Mozambique, all users. L1 users: 5,260,000 in Mozambique (2022). L2 users: 8,560,000 (2022). *Status*: 1 (National). Statutory national language (2004, Constitution, Article 10). *Class*: Indo-European, Italic, Romance, Italo-Western, Western, Gallo-Iberian, Ibero-Romance, West Iberian, Portuguese-Galician. *Type*: SVO; prepositions; gender (masculine/feminine); definite and indefinite articles; verb affixes mark person, number; passives; tense; comparatives; 21 consonants, 13 vowels, 11 diphthongs; non-tonal. *Lg Dev*: Taught in all primary and secondary schools. Fully developed. Bible: 1751–2017. *Writing*: Braille script. Latin script, primary usage. *Other*: Non-indigenous. *Worldwide*: Total users in all countries: 263,638,850 (as L1: 236,266,650; as L2: 27,372,200). Indigenous in: Portugal, Spain. Also established in 13 other countries and unestablished in 39 more.

Ronga [rng] (GiRonga, Gironga, Rhonga, ShiRonga, Shironga, XiRonga, Xirhonga). Autonym: Xironga. *Users*: 617,000 in Mozambique (2017). *Location*: Cidade de Maputo; Maputo province. *Status*: 5* (Developing). *Class*: Niger-Congo, Atlantic-Congo, Volta-Congo, Benue-Congo, Bantoid, Southern, Narrow Bantu, Central, S, Tswa-Rhonga (S.54). *Dialects*: Konde, Putru, Kalanga. Partially intelligible with Tsonga [tso] and Tswa [tsc]. *Lg Dev*: Grammar. Bible: 1923. *DLS*: Emerging (0.02). *Writing*: Latin script. *Map*: 21:39. *Worldwide*: Total users in all countries: 618,000. Also indigenous in: South Africa.

Sena [seh] (Chisena). Autonym: Cisena. *Users*: 2,030,000 (2017). *Location*: Manica, Sofala, Tete, and Zambezia provinces: lower Zambezi river region. *Status*: 5* (Developing). *Class*: Niger-Congo, Atlantic-Congo, Volta-Congo, Benue-Congo, Bantoid, Southern, Narrow Bantu, Central, N, Senga-Sena (N.44). *Dialects*: Caia (Care, North Sena, Sare), Bangwe (South Sena), Gombe, Sangwe, Podzo (Chipodzo, Cipodzo, Phodzo, Puthsu, Shiputhsu), Gorongosa. Reportedly similar to Nyungwe [nyu], Nyanja [nya], Phimbi [phm], and Kunda [kdn] of Zambia. Sena Central is the prestige dialect. Lexical similarity: 92% between the Podzo and Sena-Sare dialects. *Lg Use*: Also use Chichewa [nya], in Tête. Also use Ndaú [ndc], in church and communication with outsiders in Beira region, but with limited comprehension. Also use Portuguese [por], with speakers of other languages. Also use Shona [sna], in Tête. *Lg Dev*: Dictionary. Grammar. NT: 1983. *DLS*: Ascending (0.21). *Writing*: Latin script. *Other*: Traditional religion, Christian. *Map*: 21:19.

Swahili [swh] (Kiswahili). Autonym: Kiswahili. *Users*: 22,000 in Mozambique (2017). *Location*: Cabo Delgado province. *Status*: 3 (Wider communication). *Class*: Niger-Congo, Atlantic-Congo, Volta-Congo, Benue-Congo, Bantoid, Southern, Narrow Bantu, Central, G, Swahili (G.42). *Type*: SVO; prepositions; noun head initial; 18 noun classes; no articles; verb affixes mark person, number, object; passives; causatives; comparatives; 22 consonant and 5 vowel phonemes; non-tonal; stress on penultimate syllable. *Lg Use*: Used as L2 by Koti [eko], Makwe [ymk], Mwani [wmw]. *Lg Dev*: Fully developed. Bible: 1891–2017. *Writing*: Braille script. Latin script. *Map*: 21:6. *Worldwide*: Total users in all countries: 71,558,080 (as L1: 16,164,680; as L2: 55,393,400). Global EGIDS level: 1 (National). Also indigenous in: Kenya, Somalia, Tanzania. Also established in: Burundi, Oman, Rwanda, South Africa, Uganda. Unestablished in: Australia, Canada, Comoros, Finland, Madagascar, Mayotte, New Zealand, Réunion, Saudi Arabia, United Arab Emirates, United Kingdom, United States.

Swati [ssw] (Siswazi, Swazi, Tekela, Tekeza, siSwati). Autonym: siSwati. *Users*: 2,500 in Mozambique (2017). *Location*: Maputo province: border area west of the capital. *Status*: 5* (Dispersed). *Class*: Niger-Congo, Atlantic-Congo, Volta-Congo, Benue-Congo, Bantoid, Southern, Narrow Bantu, Central, S, Nguni (S.43). *Lg Dev*: Newspapers. Radio. TV. Grammar. Bible: 1996. *Writing*: Latin script. *Map*: 21:41. *Worldwide*: Total users in all countries: 4,714,500 (as L1: 2,314,500; as L2: 2,400,000). Global EGIDS level: 1 (National). Also indigenous in: Eswatini, South Africa. Also established in: Lesotho (Phuthi).

Takwane [tke] (Etakwane, Thakwani). Autonym: ETakwani. *Users*: 368,000 (2017). *Location*: Zambezia province. *Status*: 6a* (Vigorous). *Class*: Niger-Congo, Atlantic-Congo, Volta-

Congo, Benue-Congo, Bantoid, Southern, Narrow Bantu, Central, P, Makhuwa (P.31). *Lg Dev*: Dictionary. NT: 2016. *DLS*: Emerging (0.06). *Writing*: Latin script. *Map*: 21:22.

Tawara [twl] (Tavara, Tawala). *Users*: 110,000 (2017). *Location*: Tete province: south, north of Zimbabwe. *Status*: 6a* (Vigorous). *Class*: Niger-Congo, Atlantic-Congo, Volta-Congo, Benue-Congo, Bantoid, Southern, Narrow Bantu, Central, S, Shona (S.11). *Dialects*: Tawara-Chioco, Tawara-Daque. Northernmost variety is related to the Korekore dialect of Shone [sna]; appears to have been influenced by Nyungwe [nyu]. *Lg Dev*: NT: 1985. *DLS*: Still. *Writing*: Latin script. *Map*: 21:30.

Tewe [twx] (Chitewe, Chiute, Ciute, Teve, Utee, Vateve, Wateve). *Users*: 365,000 (2017). *Location*: Manica and Sofala provinces: Chimoio city northeast, Pungoe river north bank. *Status*: 6a* (Vigorous). *Class*: Niger-Congo, Atlantic-Congo, Volta-Congo, Benue-Congo, Bantoid, Southern, Narrow Bantu, Central, S, Shona (S.13). *Dialects*: Considered by many a Manyika [mxc] dialect. *DLS*: Emerging (0.01). *Writing*: Latin script. *Map*: 21:33.

Tonga [toh] (Bitonga, Gitonga, Guitonga, Inhambane, Shengwe, Tonga-Inhambane). Autonym: guiTonga. *Users*: 327,000 (2017). *Location*: Inhambane province: up to Morrumbane. *Status*: 5* (Developing). *Class*: Niger-Congo, Atlantic-Congo, Volta-Congo, Benue-Congo, Bantoid, Southern, Narrow Bantu, Central, S, Copi (S.62). *Dialects*: Gitonga Gy Khogani, Nyambe (Cinyambe), Sewi (Gisewi). Lexical similarity: 44% with Chopi [cce]. *Lg Dev*: Bible: 2016. *DLS*: Emerging (0.09). *Writing*: Latin script. *Other*: Different from Tonga [tog] of Malawi and Tonga [toi] of Zambia and Zimbabwe. *Map*: 21:37.

Tsonga [tso] (Gwamba, Shitsonga, Thonga, Tonga, Vatsonga, Xitsonga). Autonym: Xitsonga. *Users*: 4,200,000 in Mozambique (2017). *Location*: Cidade de Maputo, Gaza, and Maputo provinces; Inhambane province: west. *Status*: 5* (Dispersed). *Class*: Niger-Congo, Atlantic-Congo, Volta-Congo, Benue-Congo, Bantoid, Southern, Narrow Bantu, Central, S, Tswa-Rhonga (S.53). *Dialects*: Bila (Vila), Changana (Changa, Hanganu, Hlanganu, Langanu, Shangaan, Shangana, Shilanganu, Xichangana), Jonga (Djonga, Dzonga), Ngwalungu (Shingwalungu). *Lg Dev*: Radio. Dictionary. Grammar. Bible: 1907–1989. *Writing*: Braille script. Latin script, primary usage. *Other*: Christian, traditional religion. *Map*: 21:35. *Worldwide*: Total users in all countries: 10,003,500 (as L1: 6,603,500; as L2: 3,400,000). Global EGIDS level: 1 (National). Also indigenous in: South Africa. Also established in: Eswatini, Zimbabwe.

Tswa [tsc] (Kitshwa, Sheetshwa, Shitshwa, Tshwa, Xitshwa). Autonym: Xitswa. *Users*: 1,000,000 in Mozambique (2017). *Location*: Gaza province: border area; Inhambane province: south of Save river. *Status*: 5* (Developing). *Class*: Niger-Congo, Atlantic-Congo, Volta-Congo, Benue-Congo, Bantoid, Southern, Narrow Bantu, Central, S, Tswa-Rhonga (S.51). *Dialects*: Hlengwe (Khambana-Makwakwe, Khambani, Lengwe, Lhengwe, Makwakwe-Khambana, Shilengwe), Tshwa (Dzibi-Dzonga, Dzivi, Dzonga-Dzibi, Xidzivi), Mandla, Ndxhonge, Nhayi. Partially intelligible of Ronga [rng] and Tsonga [tso]. *Lg Use*: Used as L2 by Chopi [cce]. *Lg Dev*: Dictionary. Grammar. Bible: 1910–1955. *DLS*: Ascending (0.16). *Writing*: Latin script. *Map*: 21:36. *Worldwide*: Total users in all countries: 1,020,000. Also indigenous in:

Zimbabwe. Also established in: South Africa.

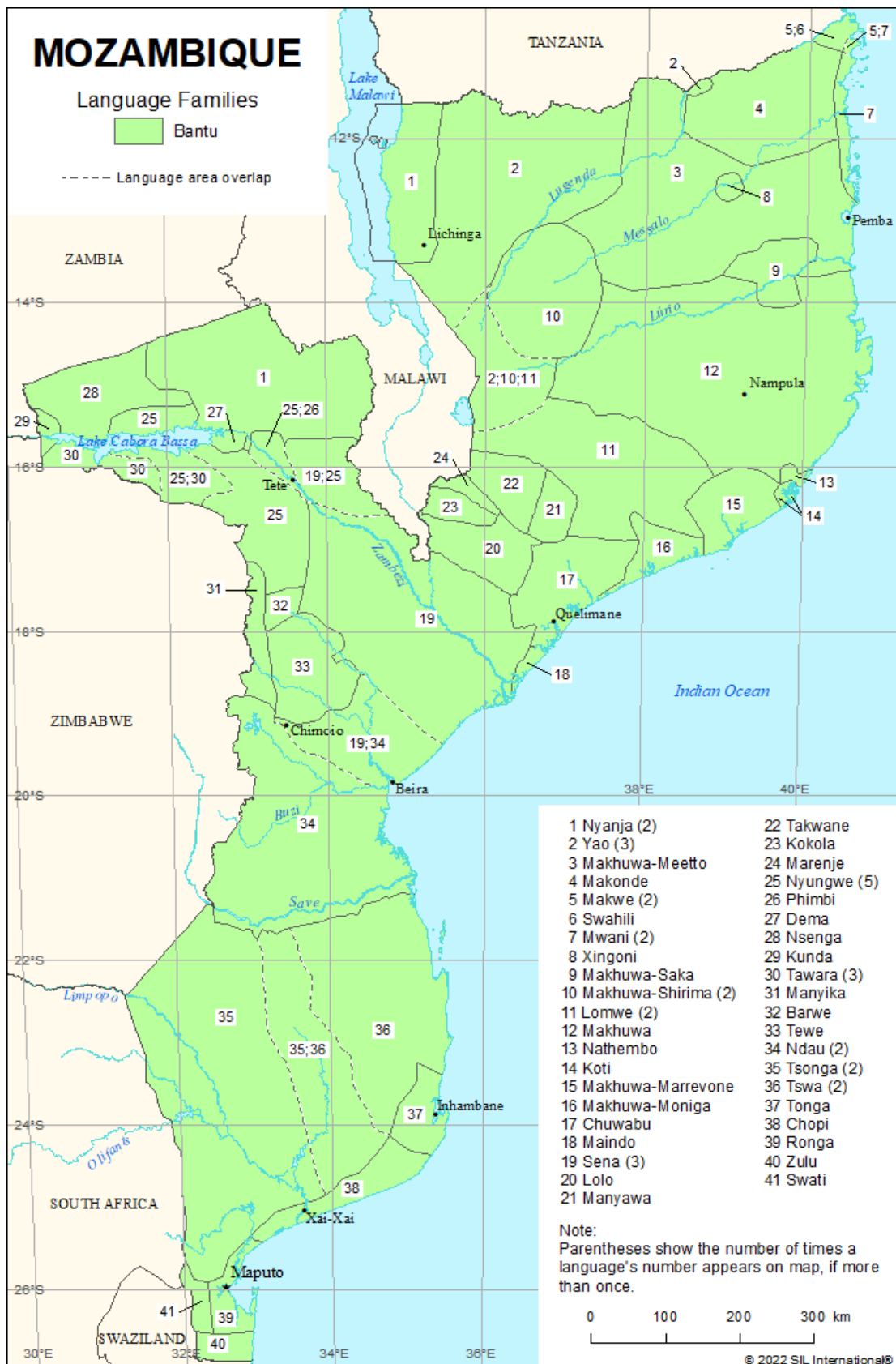
Xingoni [xnq] (Mozambican Ngoni, Ngoni). Autonym: Xingoni. *Users*: 53,000 (2020 SIL).

Location: Cabo Delgado province: Meluco, Montepuez, Mueda, and Nangade districts; Niassa province: Mecula district. *Status*: 5 (Developing). *Class*: Niger-Congo, Atlantic-Congo, Volta-Congo, Benue-Congo, Bantoid, Southern, Narrow Bantu, Central, N, Manda (N.12). *Lg Use*: Used by all. Also use Portuguese [por]. *DLS*: Emerging (0.04). *Writing*: Latin script. *Other*: Different from Ngoni which is an alternate name for Zulu [zul], Ngoni dialect of Nsenga [nse], Ngoni dialect of Tumbuka [tum], and Chingoni [xnj] of Tanzania. Not related to Ngoni [nya] of Malawi. Muslim. *Map*: 21:8.

Yao [yao] (Achawa, Adsawa, Adsoa, Ajawa, Ayawa, Ayo, Chiyao, Ciyao, Ciyawo, Djao, Haiiao, Hiao, Hyao, Jao, Veiao, Wajao, Yawo). Autonym: Ciyawo. *Users*: 298,000 in Mozambique (2017). *Location*: Cabo Delgado province: Ruvumu river near Negomano; Nampula province: west; Niassa province: south and east of Lake Malawi; Zambezia province: Gurue district, northwest border. *Status*: 5* (Developing). *Class*: Niger-Congo, Atlantic-Congo, Volta-Congo, Benue-Congo, Bantoid, Southern, Narrow Bantu, Central, P, Yao (P.21). *Dialects*: Makale (Cimakale), Massaninga (Cimassaninga), Machinga, Mangochi, Tunduru Yao, Chikonono (Cikonono). *Lg Dev*: Literature. Radio. Dictionary. Grammar. Texts. Bible: 2014. *Writing*: Latin script. *Other*: Muslim, Christian. *Map*: 21:2. *Worldwide*: Total users in all countries: 3,728,000. Also indigenous in: Malawi. Also established in: Tanzania, Zambia.

Zulu [zul] (Isizulu, Zunda). *Users*: 6,000 in Mozambique (2017). *Location*: Maputo province: borders with Swaziland and South Africa. *Status*: 5* (Dispersed). *Class*: Niger-Congo, Atlantic-Congo, Volta-Congo, Benue-Congo, Bantoid, Southern, Narrow Bantu, Central, S, Nguni (S.42). *Type*: SVO; noun head initial; 13 noun classes; no articles; verb affixes mark person, number, object; passives; aspect; causatives; 30 consonant and 10 vowel phonemes; stress on penultimate syllable; non-tonal. *Lg Dev*: Newspapers. Radio. Dictionary. Grammar. Bible: 1883–1959. *Writing*: Braille script. Latin script, primary usage. *Map*: 21:40. *Worldwide*: Total users in all countries: 27,804,600 (as L1: 12,104,600; as L2: 15,700,000). Global EGIDS level: 1 (National). Also indigenous in: Lesotho, South Africa. Also established in: Eswatini, Malawi. Unestablished in: Botswana.

Language Map



Languages by Population

In this section the languages of Mozambique are listed in order of their population of first-language speakers within the country, from highest to lowest. The entries report just the population and status elements.

1,000,000 to 9,999,999

Portuguese [[por](#)] *Users:* 5,260,000 in Mozambique (2022). 13,820,000 in Mozambique, all users. L2 users: 8,560,000 (2022). *Status:* 1 (National). Statutory national language (2004, Constitution, Article 10). *Worldwide:* Total users in all countries: 263,638,850 (as L1: 236,266,650; as L2: 27,372,200).

Tsonga [[tso](#)] *Users:* 4,200,000 in Mozambique (2017). *Status:* 5* (Dispersed). *Worldwide:* Total users in all countries: 10,003,500 (as L1: 6,603,500; as L2: 3,400,000).

Makhuwa [[vmw](#)] *Users:* 3,960,000 in Mozambique (2017). *Status:* 5* (Developing). *Worldwide:* Total users in all countries: 3,974,400.

Lomwe [[ngl](#)] *Users:* 2,520,000 (2017). *Status:* 5* (Developing).

Sena [[seh](#)] *Users:* 2,030,000 (2017). *Status:* 5* (Developing).

Nyanja [[nya](#)] *Users:* 1,290,000 in Mozambique (2017). *Status:* 5* (Dispersed). *Worldwide:* Total users in all countries: 14,380,700.

Makhuwa-Meetto [[mgh](#)] *Users:* 1,170,000 in Mozambique (2017). *Status:* 5* (Developing). *Worldwide:* Total users in all countries: 1,748,800.

Chopi [[cce](#)] *Users:* 1,100,000 (2017). *Status:* 5* (Developing).

Tswa [[tsc](#)] *Users:* 1,000,000 in Mozambique (2017). *Status:* 5* (Developing). *Worldwide:* Total users in all countries: 1,020,000.

100,000 to 999,999

Chuwabu [[chw](#)] *Users:* 970,000 (2017). *Status:* 5 (Developing).

Ndau [[ndc](#)] *Users:* 730,000 in Mozambique (2017). *Status:* 5* (Developing). *Worldwide:* Total users in all countries: 1,530,000.

Makhuwa-Shirima [[vmk](#)] *Users:* 729,000 (2017). *Status:* 5* (Developing).

Ronga [[rng](#)] *Users:* 617,000 in Mozambique (2017). *Status:* 5* (Developing). *Worldwide:* Total users in all countries: 618,000.

Marenje [[vmr](#)] *Users:* 588,000 (2017). *Status:* 6a* (Vigorous).

Makonde [[kde](#)] *Users:* 525,000 in Mozambique (2017). *Status:* 5* (Developing). *Worldwide:*

Total users in all countries: 1,995,000.

Nyungwe [nyu] *Users:* 490,000 (2017 census). *Status:* 3 (Wider communication).

Makhuwa-Moniga [mhm] *Users:* 440,000 (2017). *Status:* 6a* (Vigorous).

Makhuwa-Marrevone [xmc] *Users:* 438,000 (2017). *Status:* 6a* (Vigorous).

Makhuwa-Saka [xsq] *Users:* 432,000 (2017). *Status:* 6a* (Vigorous).

Takwane [tke] *Users:* 368,000 (2017). *Status:* 6a* (Vigorous).

Tewe [twx] *Users:* 365,000 (2017). *Status:* 6a* (Vigorous).

Lolo [llb] *Users:* 330,000 (2017). *Status:* 5* (Developing).

Tonga [toh] *Users:* 327,000 (2017). *Status:* 5* (Developing).

Yao [yao] *Users:* 298,000 in Mozambique (2017). *Status:* 5* (Developing). *Worldwide:* Total users in all countries: 3,728,000.

Manyawa [mny] *Users:* 219,000 (2017). 85% monolingual in Lugela District. *Status:* 6a (Vigorous).

Nsenga [nse] *Users:* 206,000 in Mozambique (2017). *Status:* 5* (Developing). *Worldwide:* Total users in all countries: 627,100.

Kokola [kzn] *Users:* 163,000 in Mozambique (2017). *Status:* 5* (Developing). *Worldwide:* Total users in all countries: 297,000.

Mozambican Sign Language [mzy] *Users:* 150,000 (2021 DBS/DOOR/SIL). Estimated 90,000–180,000 deaf signers, based on 0.3%–0.6% of total population. *Status:* 5 (Developing).

Manyika [mxc] *Users:* 146,000 in Mozambique (2017). *Status:* 5* (Developing). *Worldwide:* Total users in all countries: 551,000.

Mwani [wmw] *Users:* 146,000 in Mozambique (2017). 166,000 in Mozambique, all users. L2 users: 20,000. *Status:* 5* (Developing). *Worldwide:* Total users in all countries: 167,150 (as L1: 147,150; as L2: 20,000).

Koti [eko] *Users:* 140,000 (2017). *Status:* 6a (Vigorous).

Tawara [twl] *Users:* 110,000 (2017). *Status:* 6a* (Vigorous).

10,000 to 99,999

Xingoni [xnq] *Users:* 53,000 (2020 SIL). *Status:* 5 (Developing).

Makwe [ymk] *Users:* 50,000 in Mozambique (2017). *Status:* 6b* (Threatened). *Worldwide:* Total users in all countries: 147,700.

Korean [kor] *Users:* 43,000 in Mozambique (2017). *Status:* Unestablished. *Worldwide:* Total users in all countries: 81,740,540 (as L1: 81,721,540; as L2: 19,000).

Maindo [cwb] *Users:* 43,000 (2017). *Status:* 6b* (Threatened).

Barwe [bwg] *Users:* 34,000 in Mozambique (2017). *Status:* 6b* (Threatened).

Chinese, Mandarin [cmn] *Users:* 25,000 in Mozambique (2017). *Status:* Unestablished.

Worldwide: Total users in all countries: 1,138,222,350 (as L1: 939,237,350; as L2: 198,985,000).

Swahili [swh] *Users:* 22,000 in Mozambique (2017). *Status:* 3 (Wider communication).

Worldwide: Total users in all countries: 71,558,080 (as L1: 16,164,680; as L2: 55,393,400).

Phimbi [phm] *Users:* 12,800 (2017). *Status:* 6b* (Threatened).

Greek [ell] *Users:* 12,700 in Mozambique (2017). *Status:* Unestablished. *Worldwide:* Total users in all countries: 13,088,220 (as L1: 12,992,220; as L2: 96,000).

Dema [dmx] *Users:* 11,000 (2017). Population displaced during Cabora Bassa Dam construction. *Status:* 6b* (Threatened).

Kunda [kdn] *Users:* 11,000 in Mozambique (2017). *Status:* 6b* (Threatened). *Worldwide:* Total users in all countries: 162,760.

1,000 to 9,999

Zulu [zul] *Users:* 6,000 in Mozambique (2017). *Status:* 5* (Dispersed). *Worldwide:* Total users in all countries: 27,804,600 (as L1: 12,104,600; as L2: 15,700,000).

Nathembo [nte] *Users:* 4,500 (2018 Endangered Languages Archive), decreasing. Ethnic population: 56,000 (2023 Joshua Project). *Status:* 7 (Shifting).

German, Standard [deu] *Users:* 4,000 in Mozambique (2017). *Status:* Unestablished. *Worldwide:* Total users in all countries: 133,245,880 (as L1: 75,282,080; as L2: 57,963,800).

Swati [ssw] *Users:* 2,500 in Mozambique (2017). *Status:* 5* (Dispersed). *Worldwide:* Total users in all countries: 4,714,500 (as L1: 2,314,500; as L2: 2,400,000).

French [fra] *Users:* 2,400 in Mozambique (2022 Joshua Project). 98,800 in Mozambique, all users. L2 users: 96,400 (Marcoux et al 2022). *Status:* 5* (Dispersed). *Worldwide:* Total users in all countries: 309,804,220 (as L1: 80,770,190; as L2: 229,034,030).

Kabuverdianu [kea] *Users:* 2,000 in Mozambique (2017). *Status:* Unestablished. *Worldwide:* Total users in all countries: 1,195,500 (as L1: 1,181,500; as L2: 14,000).

Languages by Status

In this section the languages of Mozambique are listed in order of their status within the country as represented by their level on the EGIDs scale (Lewis and Simons 2010). The language entries are reduced to just the information elements that are relevant to assessing the EGIDS level: population, status, language use, language development, and writing.

1 (National)

Portuguese [por] *Users:* 13,820,000 in Mozambique, all users. L1 users: 5,260,000 in Mozambique (2022). L2 users: 8,560,000 (2022). *Status:* Statutory national language (2004, Constitution, Article 10). *Writing:* Braille script. Latin script, primary usage. *Worldwide:* Total users in all countries: 263,638,850 (as L1: 236,266,650; as L2: 27,372,200).

3 (Wider communication)

Nyungwe [nyu] *Users:* 490,000 (2017 census). *Status:* Nyungwe is one of the recognized national languages during postcolonial period in 1975. Used as a trade language throughout Tete province. *Lg Use:* Used as L2 by Phimbi [phm]. *Lg Dev:* Dictionary. Grammar. NT: 2019. *Writing:* Latin script.

Swahili [swh] *Users:* 22,000 in Mozambique (2017). *Lg Use:* Used as L2 by Koti [eko], Makwe [ymk], Mwani [wmw]. *Writing:* Braille script. Latin script. *Worldwide:* Total users in all countries: 71,558,080 (as L1: 16,164,680; as L2: 55,393,400).

5 (Developing)

Chopi [cce] *Users:* 1,100,000 (2017). *Lg Use:* Also use Tswa [tsc], with about 50% of the population understanding it. *Lg Dev:* Dictionary. Grammar. Bible: 2017. *Writing:* Latin script.

Chuwabu [chw] *Users:* 970,000 (2017). *Lg Use:* All domains except education. Used by all. Some also use Portuguese [por], mostly in urban areas (Guérois 2015). *Lg Dev:* Dictionary. Grammar. Bible: 1978–2003. *Writing:* Latin script.

Kokola [kzn] *Users:* 163,000 in Mozambique (2017). *Writing:* Latin script. *Worldwide:* Total users in all countries: 297,000.

Lolo [llb] *Users:* 330,000 (2017). *Lg Dev:* NT: 2017. *Writing:* Latin script.

Lomwe [ngl] *Users:* 2,520,000 (2017). *Lg Use:* Used as L2 by Manyawa [mny]. *Lg Dev:* Dictionary. Bible: 2017. *Writing:* Latin script.

Makhuwa [vmw] *Users:* 3,960,000 in Mozambique (2017). *Lg Use:* Used as L2 by Koti [eko], Mwani [wmw]. *Lg Dev:* Dictionary. Bible: 1982–2000. *Writing:* Latin script. *Worldwide:* Total users in all countries: 3,974,400.

Makhuwa-Meetto [mgh] *Users:* 1,170,000 in Mozambique (2017). *Lg Dev:* Dictionary. Grammar. NT: 2009–2021. *Writing:* Latin script. *Worldwide:* Total users in all countries: 1,748,800.

Makhuwa-Shirima [vmk] *Users:* 729,000 (2017). *Lg Dev:* NT: 2000. *Writing:* Latin script.

Makonde [kde] *Users:* 525,000 in Mozambique (2017). *Lg Use:* Used as L2 by Makwe [ymk]. *Writing:* Latin script. *Worldwide:* Total users in all countries: 1,995,000.

Manyika [mxc] *Users:* 146,000 in Mozambique (2017). *Writing:* Latin script. *Worldwide:* Total users in all countries: 551,000.

Mozambican Sign Language [mzy] *Users:* 150,000 (2021 DBS/DOOR/SIL). Estimated 90,000–180,000 deaf signers, based on 0.3%–0.6% of total population. *Lg Use:* Used by all. *Lg Dev:* Dictionary.

Mwani [wmw] *Users:* 166,000 in Mozambique, all users. L1 users: 146,000 in Mozambique (2017). L2 users: 20,000. *Lg Use:* Home, community, religion, commerce. Also use Makhuwa [vmw]. Also use Portuguese [por]. Also use Swahili [swh]. Used as L2 by Makwe [ymk]. *Lg Dev:* NT: 2013. *Writing:* Arabic script, Naskh variant. Latin script. *Worldwide:* Total users in all countries: 167,150 (as L1: 147,150; as L2: 20,000).

Ndau [ndc] *Users:* 730,000 in Mozambique (2017). *Lg Use:* Used as L2 by Sena [seh]. *Lg Dev:* Bible: 1985–2009. *Writing:* Latin script. *Worldwide:* Total users in all countries: 1,530,000.

Nsenga [nse] *Users:* 206,000 in Mozambique (2017). *Writing:* Latin script. *Worldwide:* Total users in all countries: 627,100.

Ronga [rng] *Users:* 617,000 in Mozambique (2017). *Lg Dev:* Grammar. Bible: 1923. *Writing:* Latin script. *Worldwide:* Total users in all countries: 618,000.

Sena [seh] *Users:* 2,030,000 (2017). *Lg Use:* Also use Chichewa [nya], in Tâte. Also use Ndau [ndc], in church and communication with outsiders in Beira region, but with limited comprehension. Also use Portuguese [por], with speakers of other languages. Also use Shona [sna], in Tâte. *Lg Dev:* Dictionary. Grammar. NT: 1983. *Writing:* Latin script.

Tonga [toh] *Users:* 327,000 (2017). *Lg Dev:* Bible: 2016. *Writing:* Latin script.

Tswa [tsc] *Users:* 1,000,000 in Mozambique (2017). *Lg Use:* Used as L2 by Chopi [cce]. *Lg Dev:* Dictionary. Grammar. Bible: 1910–1955. *Writing:* Latin script. *Worldwide:* Total users in all countries: 1,020,000.

Xingoni [xnq] *Users:* 53,000 (2020 SIL). *Lg Use:* Used by all. Also use Portuguese [por]. *Writing:* Latin script.

Yao [yao] *Users:* 298,000 in Mozambique (2017). *Writing:* Latin script. *Worldwide:* Total users in all countries: 3,728,000.

5 (Dispersed)

French [fra] *Users:* 98,800 in Mozambique, all users. L1 users: 2,400 in Mozambique (2022)

Joshua Project). L2 users: 96,400 (Marcoux et al 2022). *Writing*: Braille script. Duployan shorthand. Latin script, primary usage. *Worldwide*: Total users in all countries: 309,804,220 (as L1: 80,770,190; as L2: 229,034,030).

Nyanja [nya] *Users*: 1,290,000 in Mozambique (2017). *Lg Use*: Used as L2 by Phimbi [phm], Sena [seh]. *Writing*: Braille script. Latin script, primary usage. *Worldwide*: Total users in all countries: 14,380,700.

Swati [ssw] *Users*: 2,500 in Mozambique (2017). *Writing*: Latin script. *Worldwide*: Total users in all countries: 4,714,500 (as L1: 2,314,500; as L2: 2,400,000).

Tsonga [tso] *Users*: 4,200,000 in Mozambique (2017). *Writing*: Braille script. Latin script, primary usage. *Worldwide*: Total users in all countries: 10,003,500 (as L1: 6,603,500; as L2: 3,400,000).

Zulu [zul] *Users*: 6,000 in Mozambique (2017). *Writing*: Braille script. Latin script, primary usage. *Worldwide*: Total users in all countries: 27,804,600 (as L1: 12,104,600; as L2: 15,700,000).

6a (Vigorous)

Koti [eko] *Users*: 140,000 (2017). *Lg Use*: Home, market, trading. Used by all. Also use Makhuwa [vmw]. Also use Portuguese [por]. Also use Swahili [swh]. Used as L2 by Nathembo [nte]. *Lg Dev*: Dictionary. Grammar. NT: 2021. *Writing*: Arabic script, Naskh variant, plans for future development using this script. Latin script, primary usage.

Makhuwa-Marrevone [xmc] *Users*: 438,000 (2017). *Lg Use*: Used as L2 by Nathembo [nte]. *Writing*: Unwritten.

Makhuwa-Moniga [mhm] *Users*: 440,000 (2017). *Writing*: Latin script.

Makhuwa-Saka [xsq] *Users*: 432,000 (2017). *Lg Use*: Positive attitudes. *Writing*: Unwritten.

Manyawa [mny] *Users*: 219,000 (2017). 85% monolingual in Lugela District. *Lg Use*: Used by all. Also use Lomwe [ngl]. *Lg Dev*: Texts. *Writing*: Unwritten.

Marenje [vmr] *Users*: 588,000 (2017). *Writing*: Unwritten.

Takwane [tke] *Users*: 368,000 (2017). *Lg Dev*: Dictionary. NT: 2016. *Writing*: Latin script.

Tawara [twl] *Users*: 110,000 (2017). *Lg Dev*: NT: 1985. *Writing*: Latin script.

Tewe [twx] *Users*: 365,000 (2017). *Writing*: Latin script.

6b (Threatened)

Barwe [bwg] *Users*: 34,000 in Mozambique (2017). *Writing*: Latin script.

Dema [dmx] *Users*: 11,000 (2017). Population displaced during Cabora Bassa Dam construction. *Lg Use*: Strong pressure to assimilate to Nyungwe [nyu].

Kunda [**kdn**] *Users:* 11,000 in Mozambique (2017). *Writing:* Latin script. *Worldwide:* Total users in all countries: 162,760.

Maindo [**cwb**] *Users:* 43,000 (2017). *Writing:* Unwritten.

Makwe [**ymk**] *Users:* 50,000 in Mozambique (2017). *Lg Use:* Some also use Mwani [**wmw**], especially men. Some also use Portuguese [**por**], especially those with schooling, for reading. Some also use Swahili [**swh**], especially men. Those with schooling can read Swahili. Also use Makonde [**kde**]. *Lg Dev:* Grammar. *Worldwide:* Total users in all countries: 147,700.

Phimbi [**phm**] *Users:* 12,800 (2017). *Lg Use:* Also use Chichewa [**nya**]. Also use Nyungwe [**nyu**].

7 (Shifting)

Nathembo [**nte**] *Users:* 4,500 (2018 Endangered Languages Archive), decreasing. Ethnic population: 56,000 (2023 Joshua Project). *Lg Use:* Adults only. Most shifting to Makhuwa-Marrevone [**xmc**]. Many shifting to Koti [**eko**]. A few also use Portuguese [**por**].

Unestablished

Chinese, Mandarin [**cmn**] *Users:* 25,000 in Mozambique (2017). *Writing:* Bopomofo script, used since 1913, revised in 1920 and 1932, mainly used in Taiwan. Braille script. Han script, Simplified variant, used since 1956, official in Mainland China (1956) and Singapore (1969), also used elsewhere. Han script, Traditional variant, used since mid-19th century, official in Taiwan, also used elsewhere. Latin script. *Worldwide:* Total users in all countries: 1,138,222,350 (as L1: 939,237,350; as L2: 198,985,000).

German, Standard [**deu**] *Users:* 4,000 in Mozambique (2017). *Writing:* Braille script. Latin script, primary usage. Latin script, Fraktur variant, used until 1940. Runic script, no longer in use. *Worldwide:* Total users in all countries: 133,245,880 (as L1: 75,282,080; as L2: 57,963,800).

Greek [**ell**] *Users:* 12,700 in Mozambique (2017). *Writing:* Braille script. Cyrillic script, used in Ukraine. Greek script, primary usage. *Worldwide:* Total users in all countries: 13,088,220 (as L1: 12,992,220; as L2: 96,000).

Kabuverdianu [**kea**] *Users:* 2,000 in Mozambique (2017). *Lg Use:* Most also use Portuguese [**por**]. *Writing:* Latin script. *Worldwide:* Total users in all countries: 1,195,500 (as L1: 1,181,500; as L2: 14,000).

Korean [**kor**] *Users:* 43,000 in Mozambique (2017). *Writing:* Braille script. Hangul and Han scripts, primary usage. Latin script, used for maps and signs. *Worldwide:* Total users in all countries: 81,740,540 (as L1: 81,721,540; as L2: 19,000).

Languages by Province

This index gives an alphabetical listing of the top-level administrative subdivisions within Mozambique. Under the name of each province is a list of the language communities that are located within its area.

Cabo Delgado

Makhuwa [vmw], 13
 Makhuwa-Meetto [mgh], 14
 Makhuwa-Saka [xsq], 14
 Makonde [kde], 14
 Makwe [ymk], 15
 Mwani [wmw], 15
 Swahili [swh], 18
 Xingoni [xnq], 20
 Yao [yao], 20

Cidade de Maputo

Ronga [rng], 18
 Tsonga [tso], 19

Gaza

Chopi [cce], 10
 Ndau [ndc], 16
 Tsonga [tso], 19
 Tswa [tsc], 19

Inhambane

Chopi [cce], 10
 Ndau [ndc], 16
 Tonga [toh], 19
 Tsonga [tso], 19
 Tswa [tsc], 19

Manica

Barwe [bwg], 10
 Manyika [mxc], 15
 Ndau [ndc], 16
 Nyungwe [nyu], 17
 Sena [seh], 18
 Tewe [twx], 19

Maputo

Chopi [cce], 10
 Ronga [rng], 18

Swati [ssw], 18

Tsonga [tso], 19

Zulu [zul], 20

Nampula

Koti [eko], 12

Lomwe [ngl], 13

Makhuwa [vmw], 13

Makhuwa-Marrevone [xmc], 13

Makhuwa-Meetto [mgh], 14

Makhuwa-Saka [xsq], 14

Makhuwa-Shirima [vmk], 14

Nathembo [nte], 16

Yao [yao], 20

Niassa

Lomwe [ngl], 13

Makhuwa [vmw], 13

Makhuwa-Meetto [mgh], 14

Makhuwa-Shirima [vmk], 14

Nyanja [nya], 17

Xingoni [xnq], 20

Yao [yao], 20

Sofala

Ndau [ndc], 16

Sena [seh], 18

Tewe [twx], 19

Tete

Dema [dmx], 11

Kunda [kdn], 12

Manyika [mxc], 15

Nsenga [nse], 16

Nyanja [nya], 17

Nyungwe [nyu], 17

Phimbi [phm], 17

Sena [seh], 18

Tawara [twl], 19

Zambezia

Chuwabu [chw], 10

Kokola [kzn], 12

Lolo [llb], 13

Lomwe [ngl], 13

Maindo [cwb], 13

Makhuwa [vmw], 13

Makhuwa-Marrevone [xmc], 13

Makhuwa-Moniga [mhm], 14

Makhuwa-Shirima [vmk], 14

Manyawa [mny], 15

Marenje [vmr], 15

Nyanja [nya], 17

Sena [seh], 18

Takwane [tke], 18

Yao [yao], 20

Languages by Family

This index gives an alphabetical listing of the linguistic classifications used for the established languages of Mozambique. The entries in this index represent the full path in the linguistic family tree from the highest level grouping down to the lowest. All the languages listed in the same entry are members of the same lowest-level subgroup. The referenced page contains the main entry that describes the language.

Indo-European, Italic, Romance, Italo-Western, Western, Gallo-Iberian, Gallo-Romance, Gallo-Rhaetian, Oïl, French

French [fra], [11](#)

Indo-European, Italic, Romance, Italo-Western, Western, Gallo-Iberian, Ibero-Romance, West Iberian, Portuguese-Galician

Portuguese [por], [17](#)

Niger-Congo, Atlantic-Congo, Volta-Congo, Benue-Congo, Bantoid, Southern, Narrow Bantu, Central, G, Swahili (G.402)

Makwe [ymk], [15](#)

Niger-Congo, Atlantic-Congo, Volta-Congo, Benue-Congo, Bantoid, Southern, Narrow Bantu, Central, G, Swahili (G.403)

Mwani [wmw], [15](#)

Niger-Congo, Atlantic-Congo, Volta-Congo, Benue-Congo, Bantoid, Southern, Narrow Bantu, Central, G, Swahili (G.42)

Swahili [swh], [18](#)

Niger-Congo, Atlantic-Congo, Volta-Congo, Benue-Congo, Bantoid, Southern, Narrow Bantu, Central, N, Chewa-Nyanja (N.31)

Chichewa [nya], [17](#)

Niger-Congo, Atlantic-Congo, Volta-Congo, Benue-Congo, Bantoid, Southern, Narrow Bantu, Central, N, Manda (N.12)

Xingoni [xnq], [20](#)

Niger-Congo, Atlantic-Congo, Volta-Congo, Benue-Congo, Bantoid, Southern, Narrow Bantu, Central, N, Senga-Sena (N.41)

Nsenga [nse], [16](#)

Phimbi [phm], [17](#)

Niger-Congo, Atlantic-Congo, Volta-Congo, Benue-Congo, Bantoid, Southern, Narrow Bantu, Central, N, Senga-Sena (N.42)

Kunda [kdn], [12](#)

Niger-Congo, Atlantic-Congo, Volta-Congo, Benue-Congo, Bantoid, Southern, Narrow Bantu, Central, N, Senga-Sena (N.43)

Nyungwe [nyu], [17](#)

Niger-Congo, Atlantic-Congo, Volta-Congo, Benue-Congo, Bantoid, Southern, Narrow

Bantu, Central, N, Senga-Sena (N.44)

Barwe [bwg], 10

Sena [seh], 18

**Niger-Congo, Atlantic-Congo, Volta-Congo, Benue-Congo, Bantoid, Southern, Narrow
Bantu, Central, P, Makhuwa (P.31)**

Kokola [kzn], 12

Lolo [llb], 13

Makhuwa [vmw], 13

Makhuwa-Marrevone [xmc], 13

Makhuwa-Meetto [mgh], 14

Makhuwa-Saka [xsq], 14

Makhuwa-Shirima [vmk], 14

Manyawa [mny], 15

Marenje [vmr], 15

Takwane [tke], 18

**Niger-Congo, Atlantic-Congo, Volta-Congo, Benue-Congo, Bantoid, Southern, Narrow
Bantu, Central, P, Makhuwa (P.311)**

Koti [eko], 12

**Niger-Congo, Atlantic-Congo, Volta-Congo, Benue-Congo, Bantoid, Southern, Narrow
Bantu, Central, P, Makhuwa (P.312)**

Nathembo [nte], 16

**Niger-Congo, Atlantic-Congo, Volta-Congo, Benue-Congo, Bantoid, Southern, Narrow
Bantu, Central, P, Makhuwa (P.32)**

Lomwe [ngl], 13

**Niger-Congo, Atlantic-Congo, Volta-Congo, Benue-Congo, Bantoid, Southern, Narrow
Bantu, Central, P, Makhuwa (P.34)**

Chuwabu [chw], 10

Maindo [cwb], 13

**Niger-Congo, Atlantic-Congo, Volta-Congo, Benue-Congo, Bantoid, Southern, Narrow
Bantu, Central, P, Makhuwa (P.341)**

Makhuwa-Moniga [mhm], 14

**Niger-Congo, Atlantic-Congo, Volta-Congo, Benue-Congo, Bantoid, Southern, Narrow
Bantu, Central, P, Yao (P.21)**

Yao [yao], 20

**Niger-Congo, Atlantic-Congo, Volta-Congo, Benue-Congo, Bantoid, Southern, Narrow
Bantu, Central, P, Yao (P.23)**

Makonde [kde], 14

**Niger-Congo, Atlantic-Congo, Volta-Congo, Benue-Congo, Bantoid, Southern, Narrow
Bantu, Central, S, Copi (S.61)**

Chopi [cce], 10

Niger-Congo, Atlantic-Congo, Volta-Congo, Benue-Congo, Bantoid, Southern, Narrow Bantu, Central, S, Copi (S.62)

Tonga [toh], 19

Niger-Congo, Atlantic-Congo, Volta-Congo, Benue-Congo, Bantoid, Southern, Narrow Bantu, Central, S, Nguni (S.42)

Zulu [zul], 20

Niger-Congo, Atlantic-Congo, Volta-Congo, Benue-Congo, Bantoid, Southern, Narrow Bantu, Central, S, Nguni (S.43)

Swati [ssw], 18

Niger-Congo, Atlantic-Congo, Volta-Congo, Benue-Congo, Bantoid, Southern, Narrow Bantu, Central, S, Shona (S.10)

Dema [dmx], 11

Niger-Congo, Atlantic-Congo, Volta-Congo, Benue-Congo, Bantoid, Southern, Narrow Bantu, Central, S, Shona (S.11)

Tawara [twl], 19

Niger-Congo, Atlantic-Congo, Volta-Congo, Benue-Congo, Bantoid, Southern, Narrow Bantu, Central, S, Shona (S.13)

Manyika [mxc], 15

Tewe [twx], 19

Niger-Congo, Atlantic-Congo, Volta-Congo, Benue-Congo, Bantoid, Southern, Narrow Bantu, Central, S, Shona (S.15)

Ndau [ndc], 16

Niger-Congo, Atlantic-Congo, Volta-Congo, Benue-Congo, Bantoid, Southern, Narrow Bantu, Central, S, Tswa-Rhonga (S.51)

Tswa [tsc], 19

Niger-Congo, Atlantic-Congo, Volta-Congo, Benue-Congo, Bantoid, Southern, Narrow Bantu, Central, S, Tswa-Rhonga (S.53)

Tsonga [tso], 19

Niger-Congo, Atlantic-Congo, Volta-Congo, Benue-Congo, Bantoid, Southern, Narrow Bantu, Central, S, Tswa-Rhonga (S.54)

Ronga [rng], 18

Sign language, Deaf community sign language

Mozambican Sign Language [mzy], 15

Language Code Index

This index gives an alphabetical listing of all 49 three-letter codes that are used in this work to uniquely identify languages. The referenced page contains the main entry that describes the language. All codes listed are part of the ISO 639-3 standard; see <http://www.sil.org/iso639-3/>.

bwg	Barwe, 10	nya	Chichewa, 17
cce	Chopi, 10	nyu	Nyungwe, 17
chw	Chuwabu, 10	phm	Phimbi, 17
cmn	Chinese, Mandarin, 10	por	Portuguese, 17
cwb	Maindo, 13	rng	Ronga, 18
deu	German, Standard, 11	seh	Sena, 18
dmx	Dema, 11	ssw	Swati, 18
eko	Koti, 12	swh	Swahili, 18
ell	Greek, 11	tke	Takwane, 18
fra	French, 11	toh	Tonga (Mozambique), 19
kde	Makonde, 14	tsc	Tswa, 19
kdn	Kunda, 12	tso	Tsonga, 19
kea	Kabuverdianu, 12	twl	Tawara, 19
kor	Korean, 12	twx	Tewe, 19
kzn	Kokola, 12	vmk	Makhuwa-Shirima, 14
llb	Lolo, 13	vmr	Marenje, 15
mgh	Makhuwa-Meetto, 14	vmw	Makhuwa, 13
mhm	Makhuwa-Moniga, 14	wmw	Mwani, 15
mny	Manyawa, 15	xmc	Makhuwa-Marrevone, 13
mxc	Manyika, 15	xnq	Xingoni, 20
mzy	Mozambican Sign Language, 15	xsq	Makhuwa-Saka, 14
ndc	Ndau, 16	yao	Yao, 20
ngl	Lomwe, 13	ymk	Makwe, 15
nse	Nsenga, 16	zul	Zulu, 20
nte	Nathembo, 16		

Language Name Index

This index lists every name that appears in the language listings as a primary or alternate name of a language or dialect. The following abbreviations are used in the index entries: *alt.* ‘alternate name for’; *alt. dial.* ‘alternate name for a dialect of’; *dial.* ‘primary name for a dialect of’; *pej. alt.* ‘pejorative alternate name for’; and *pej. alt. dial.* ‘pejorative alternate name for a dialect of’. Each index entry resolves to the primary name for the language with which the indexed name is associated, followed by square brackets containing the unique three-letter language code from ISO 639-3. The referenced page contains the main entry that describes the language. If the language appears on a map, the entry for the primary name also lists page numbers for the maps on which the language occurs.

- Achawa**, *alt.* Yao [yao], 20
Acilowe, *alt.* Lomwe [ngl], 13
Adsawa, *alt.* Yao [yao], 20
Adsoa, *alt.* Yao [yao], 20
Ajawa, *alt.* Yao [yao], 20
Akoti, *alt.* Koti [eko], 12
Alomwe, *alt.* Lomwe [ngl], 13
Angoche, *alt.* Koti [eko], 12
Angoje, *alt.* Koti [eko], 12
Angoni, *dial.* Chichewa [nya], 17
Angoxe, *alt.* Koti [eko], 12
Ayawa, *alt.* Yao [yao], 20
Ayo, *alt.* Yao [yao], 20
Badoni, *dial.* Maindo [cwb], 13
Balke, *alt.* Barwe [bwg], 10
Bangwe, *dial.* Sena [seh], 18
Barwe [bwg], 10, 21
Bila, *dial.* Tsonga [tso], 19
Bitonga, *alt.* Tonga [toh], 19
Bocha, *dial.* Manyika [mxc], 15
Boka, *alt. dial.* Manyika [mxc], 15
Bunji, *dial.* Manyika [mxc], 15
Bvumba, *dial.* Manyika [mxc], 15
Caia, *dial.* Sena [seh], 18
Care, *alt. dial.* Sena [seh], 18
Central Chuwabo, *dial.* Chuwabu [chw], 10
Central Makhuwa, *alt.* Makhuwa [vmw], 13
Central Makua, *dial.* Makhuwa [vmw], 13
Cewa, *alt. dial.* Chichewa [nya], 17
Changa, *alt. dial.* Ndaou [ndc], 16
alt. dial. Tsonga [tso], 19
Changana, *dial.* Tsonga [tso], 19
Chewa, *dial.* Chichewa [nya], 17
Chibabava, *alt. dial.* Ndaou [ndc], 16
Chichanga, *alt. dial.* Ndaou [ndc], 16
Chichewa, *alt. dial.* Chichewa [nya], 17
Chichopi, *alt.* Chopi [cce], 10
Chichwabo, *alt.* Chuwabu [chw], 10
Chicunda, *alt.* Kunda [kdn], 12
Chikonono, *dial.* Yao [yao], 20
Chikunda, *alt.* Kunda [kdn], 12
Chilowe, *alt.* Lomwe [ngl], 13
Chimakonde, *alt.* Makonde [kde], 14
Chimanyika, *alt.* Manyika [mxc], 15
Chimaviha, *alt. dial.* Makonde [kde], 14
Chindau, *alt. dial.* Ndaou [ndc], 16
alt. Ndaou [ndc], 16
Mandarin Chinese, *see* Chinese, Mandarin [cmn], 10
Chinimakonde, *alt.* Makonde [kde], 14
Chinsenga, *alt.* Nsenga [nse], 16
Chinyanja, *alt.* Chichewa [nya], 17

- Chinyungwe**, *alt.* Nyungwe [nyu], 17
Chinyungwi, *alt.* Nyungwe [nyu], 17
Chipodzo, *alt. dial.* Sena [seh], 18
Chirima, *alt.* Makhuwa-Shirima [vmk], 14
Chirue, *alt.* Barwe [bwg], 10
Chisena, *alt.* Sena [seh], 18
Chisenji, *alt. dial.* Ndaou [ndc], 16
Chitewe, *alt.* Tewe [twx], 19
Chiute, *alt.* Tewe [twx], 19
Chixanga, *alt. dial.* Ndaou [ndc], 16
Chiyao, *alt.* Yao [yao], 20
Chopi [cce], 10, 21
Chuabo, *alt.* Chuwabu [chw], 10
Chuwabo, *alt.* Chuwabu [chw], 10
Chuwabu [chw], 10, 21
Chwabo, *alt.* Chuwabu [chw], 10
Chwambo, *alt.* Maindo [cwb], 13
Cibalke, *alt.* Barwe [bwg], 10
Cicewa, *alt. dial.* Chichewa [nya], 17
Cicopi, *alt.* Chopi [cce], 10
Cicuabo, *alt.* Chuwabu [chw], 10
Cidanda, *alt. dial.* Ndaou [ndc], 16
Cidondo, *alt. dial.* Ndaou [ndc], 16
Cigova, *alt. dial.* Ndaou [ndc], 16
Cikonono, *alt. dial.* Yao [yao], 20
Cikunda, *alt.* Kunda [kdn], 12
Cilowe, *alt.* Lomwe [ngl], 13
Cimakale, *alt. dial.* Yao [yao], 20
Cimakonde, *alt.* Makonde [kde], 14
Cimashanga, *alt. dial.* Ndaou [ndc], 16
Cimassaninga, *alt. dial.* Yao [yao], 20
Cindanda, *alt. dial.* Ndaou [ndc], 16
Cindau, *alt.* Ndaou [ndc], 16
Cingoni, *alt. dial.* Chichewa [nya], 17
Cinianja, *alt.* Chichewa [nya], 17
Cinsenga, *alt.* Nsenga [nse], 16
Cinyambe, *alt. dial.* Tonga [toh], 19
Cinyanja, *alt. dial.* Chichewa [nya], 17
alt. Chichewa [nya], 17
Cinyungwe, *alt.* Nyungwe [nyu], 17
Cipodzo, *alt. dial.* Sena [seh], 18
Cisena, *alt.* Sena [seh], 18
Ciute, *alt.* Tewe [twx], 19
Ciyao, *alt.* Yao [yao], 20
Ciyawo, *alt.* Yao [yao], 20
Coastal Makhuwa, *alt.* Makhuwa-Marrevone [xmc], 13
Coastal Makwe, *dial.* Makwe [ymk], 15
Copi, *alt.* Chopi [cce], 10
dial. Chopi [cce], 10
Coti, *alt.* Koti [eko], 12
Cuabo, *alt.* Chuwabu [chw], 10
Cuwabo, *alt.* Chuwabu [chw], 10
Danda, *dial.* Ndaou [ndc], 16
Dema [dmx], 11, 21
Djao, *alt.* Yao [yao], 20
Djonga, *alt. dial.* Tsonga [tso], 19
Domba, *dial.* Manyika [mxc], 15
Donde, *alt. dial.* Makonde [kde], 14
Dondo, *dial.* Ndaou [ndc], 16
Dzibi-Dzonga, *alt. dial.* Tswa [tsc], 19
Dzivi, *alt. dial.* Tswa [tsc], 19
Dzonga, *alt. dial.* Tsonga [tso], 19
Dzonga-Dzibi, *alt. dial.* Tswa [tsc], 19
Echirima, *alt.* Makhuwa-Shirima [vmk], 14
Echuabo, *alt.* Chuwabu [chw], 10
Echuwabo, *alt.* Chuwabu [chw], 10
Echuwabu, *alt.* Chuwabu [chw], 10
Ecwabo, *alt.* Chuwabu [chw], 10
Edheidhei, *pej. alt.* Nathembo [nte], 16
Ekoti, *alt.* Koti [eko], 12
Elomwe, *alt.* Lomwe [ngl], 13
Emaka, *alt.* Makhuwa-Marrevone [xmc], 13
Emakhua Eshirima, *alt.* Makhuwa-Shirima

- [vmk], 14
- Emakhua Exirima**, *alt.* Makhuwa-Shirima [vmk], 14
- Emakhuwa**, *alt.* Makhuwa [vmw], 13
- Emakhuwa Echirima**, *alt.* Makhuwa-Shirima [vmk], 14
- Emakhuwa-Emoniga**, *alt.* Makhuwa-Moniga [mhm], 14
- Emakhuwa-Makhuwana**, *alt.* Makhuwa [vmw], 13
- Emakhuwana**, *alt. dial.* Makhuwa [vmw], 13
alt. dial. Makhuwa-Marrevone [xmc], 13
- Emakua**, *alt.* Makhuwa [vmw], 13
- Emarendje**, *alt.* Marenje [vmr], 15
- Emathipane**, *alt. dial.* Makhuwa [vmw], 13
- Emeto**, *alt.* Makhuwa-Meetto [mgh], 14
- Emoniga**, *alt.* Makhuwa-Moniga [mhm], 14
- Empamela**, *alt. dial.* Makhuwa-Marrevone [xmc], 13
dial. Makhuwa [vmw], 13
- Emwaja**, *dial.* Makhuwa [vmw], 13
- Enaharra**, *alt. dial.* Makhuwa [vmw], 13
- Enatthembo**, *alt.* Nathembo [nte], 16
- Enlai**, *dial.* Makhuwa [vmw], 13
dial. Makhuwa-Marrevone [xmc], 13
- Enyara**, *dial.* Makhuwa [vmw], 13
- Erati**, *alt. dial.* Makhuwa-Saka [xsq], 14
- Esaaka**, *alt. dial.* Makhuwa-Saka [xsq], 14
alt. Makhuwa-Saka [xsq], 14
- Esaka**, *alt.* Makhuwa-Saka [xsq], 14
- Esakaji**, *alt.* Nathembo [nte], 16
- Esangaje**, *alt.* Nathembo [nte], 16
- Esangaji**, *alt.* Nathembo [nte], 16
- Eshangáaji**, *alt.* Nathembo [nte], 16
- Eshirima**, *alt.* Makhuwa-Shirima [vmk], 14
- Etakwane**, *alt.* Takwane [tke], 18
- ETakwani**, *alt.* Takwane [tke], 18
- Etteittei**, *pej. alt.* Nathembo [nte], 16
- Etzuwabo**, *alt.* Chuwabu [chw], 10
- French** [fra], 11
- Standard German**, *see* German, Standard [deu], 11
- GiRonga**, *alt.* Ronga [rng], 18
- Gisewi**, *alt. dial.* Tonga [toh], 19
- Gitonga**, *alt.* Tonga [toh], 19
- Gitonga Gy Khogani**, *dial.* Tonga [toh], 19
- Gombe**, *dial.* Sena [seh], 18
- Gorongosa**, *dial.* Sena [seh], 18
- Gova**, *dial.* Ndau [ndc], 16
- Guitonga**, *alt.* Tonga [toh], 19
- Guta**, *dial.* Manyika [mxc], 15
- Gwamba**, *alt.* Tsonga [tso], 19
- Haiao**, *alt.* Yao [yao], 20
- Hanganu**, *alt. dial.* Tsonga [tso], 19
- Here**, *dial.* Manyika [mxc], 15
- Hiao**, *alt.* Yao [yao], 20
- Hlanganu**, *alt. dial.* Tsonga [tso], 19
- Hlengwe**, *dial.* Tswa [tsc], 19
- Hungwe**, *dial.* Manyika [mxc], 15
- Hyao**, *alt.* Yao [yao], 20
- Ibo**, *alt.* Mwani [wmw], 15
- iKokola**, *alt.* Kokola [kzn], 12
- iLolo**, *alt.* Lolo [llb], 13
- Ilomwe**, *alt.* Lomwe [ngl], 13
- Imeetto**, *alt.* Makhuwa-Meetto [mgh], 14
- Ingulu**, *alt.* Lomwe [ngl], 13
- Inhambane**, *alt.* Tonga [toh], 19
- Interior Makwe**, *dial.* Makwe [ymk], 15
- Isaanga**, *alt.* Makhuwa-Saka [xsq], 14
- Ishanga**, *alt.* Makhuwa-Saka [xsq], 14
- Isizulu**, *alt.* Zulu [zul], 20
- Jao**, *alt.* Yao [yao], 20
- Jindwi**, *dial.* Manyika [mxc], 15
- Jonga**, *dial.* Tsonga [tso], 19
- Kalanga**, *dial.* Ronga [rng], 18

- Karombe**, *dial.* Manyika [mxc], 15
- Karungu**, *dial.* Chuwabu [chw], 10
- Khambana-Makwakwe**, *alt. dial.* Tswa [tsc], 19
- Khambani**, *alt. dial.* Tswa [tsc], 19
dial. Chopi [cce], 10
- Kikisanga**, *alt. dial.* Mwani [wmw], 15
- Kilenge**, *alt. dial.* Chopi [cce], 10
- Kimakwe**, *alt.* Makwe [ymk], 15
- Kimawiha**, *alt. dial.* Makonde [kde], 14
- Kimwani**, *alt.* Mwani [wmw], 15
- Kinkojo**, *alt. dial.* Mwani [wmw], 15
- Kinsimbwa**, *alt. dial.* Mwani [wmw], 15
- Kisanga**, *dial.* Mwani [wmw], 15
- Kiswahili**, *alt.* Swahili [swh], 18
- Kitshwa**, *alt.* Tswa [tsc], 19
- Kiwibo**, *alt. dial.* Mwani [wmw], 15
- Kokola** [kzn], 12, 21
- Konde**, *alt.* Makonde [kde], 14
dial. Ronga [rng], 18
- Koti** [eko], 12, 21
- Kunda** [kdn], 12, 21
- Lambwe**, *dial.* Chopi [cce], 10
- Langanu**, *alt. dial.* Tsonga [tso], 19
- Lenge**, *alt. dial.* Chopi [cce], 10
- Lengue**, *dial.* Chopi [cce], 10
- Lengwe**, *alt. dial.* Tswa [tsc], 19
- Lhengwe**, *alt. dial.* Tswa [tsc], 19
- Lolo** [llb], 13, 21
- Lomue**, *alt.* Lomwe [ngl], 13
- Lomwe** [ngl], 13, 21
- Mabiha**, *alt. dial.* Makonde [kde], 14
- Maca**, *alt.* Makhuwa-Marrevone [xmc], 13
- Machinga**, *dial.* Yao [yao], 20
- Maconde**, *alt.* Makonde [kde], 14
- Macua**, *alt.* Makhuwa [vmw], 13
- Macue**, *alt.* Makwe [ymk], 15
- Maharra**, *alt. dial.* Makhuwa [vmw], 13
- Maindo** [cwb], 13, 21
dial. Chuwabu [chw], 10
- Maka**, *alt.* Makhuwa-Marrevone [xmc], 13
- Makale**, *dial.* Yao [yao], 20
- Makhuwa** [vmw], 13, 21
- Makhuwa-Exirima**, *alt.* Makhuwa-Shirima [vmk], 14
- Makhuwa-Makhuwana**, *alt.* Makhuwa [vmw], 13
- Makhuwa-Marrevone** [xmc], 13, 21
- Makhuwa-Meetto** [mgh], 14, 21
- Makhuwa-Moniga** [mhm], 14, 21
- Makhuwana**, *alt. dial.* Makhuwa [vmw], 13
dial. Makhuwa-Marrevone [xmc], 13
- Makhuwa-Niassa**, *alt.* Makhuwa-Shirima [vmk], 14
- Makhuwa-Saka** [xsq], 14, 21
- Makhuwa-Shirima** [vmk], 14, 21
- Makhuwa-Xirima**, *alt.* Makhuwa-Shirima [vmk], 14
- Makhuwwa of Nampula**, *alt.* Makhuwa [vmw], 13
- Makoane**, *alt.* Makhuwa [vmw], 13
- Makonda**, *alt.* Makonde [kde], 14
- Makonde** [kde], 14, 21
alt. dial. Makonde [kde], 14
- Makua**, *alt.* Makhuwa [vmw], 13
- Makua-Marevone**, *alt.* Makhuwa-Marrevone [xmc], 13
- Makuana**, *alt. dial.* Makhuwa [vmw], 13
- Makwakwe-Khambana**, *alt. dial.* Tswa [tsc], 19
- Makwe** [ymk], 15, 21
- Mandla**, *dial.* Tswa [tsc], 19
- Mangochi**, *dial.* Yao [yao], 20
- Manika**, *alt.* Manyika [mxc], 15
- Manyawa** [mny], 15, 21

- Manyika** [mxc], 15, 21
- Maquoua**, *alt.* Makhuwa [vmw], 13
- Marale**, *dial.* Chuwabu [chw], 10
- Marendje**, *alt.* Marenje [vmr], 15
- Marenje** [vmr], 15, 21
- Marevone**, *alt.* Makhuwa-Marrevone [xmc], 13
- Marrevone**, *alt.* Makhuwa-Marrevone [xmc], 13
- Mashanga**, *alt. dial.* Ndau [ndc], 16
- Massaninga**, *dial.* Yao [yao], 20
- Matambwe**, *alt.* Makonde [kde], 14
- Mavia**, *alt. dial.* Makonde [kde], 14
- Maviha**, *dial.* Makonde [kde], 14
- Mawia**, *alt. dial.* Makonde [kde], 14
- Mawiha**, *alt. dial.* Makonde [kde], 14
- Medo**, *alt.* Makhuwa-Meetto [mgh], 14
- Meetto**, *alt.* Makhuwa-Meetto [mgh], 14
- Meto**, *alt.* Makhuwa-Meetto [mgh], 14
- Mêto**, *alt.* Makhuwa-Meetto [mgh], 14
- Metto**, *alt.* Makhuwa-Meetto [mgh], 14
- Mitange**, *dial.* Maindo [cwb], 13
- Moniga**, *alt.* Makhuwa-Moniga [mhm], 14
- Mozambican Ngoni**, *alt.* Xingoni [xnq], 20
- Mozambican Sign Language** [mzy], 15, 0
- Mu Chikunda**, *alt.* Kunda [kdn], 12
- Muane**, *alt.* Mwani [wmw], 15
- Mulai**, *alt. dial.* Makhuwa [vmw], 13
- Mwalu**, *alt. dial.* Makonde [kde], 14
- Mwambe**, *alt. dial.* Makonde [kde], 14
- Mwane**, *alt.* Mwani [wmw], 15
- Mwani** [wmw], 15, 21
- Mwaní**, *alt.* Mwani [wmw], 15
- Nahara**, *alt. dial.* Makhuwa [vmw], 13
- Naharra**, *dial.* Makhuwa [vmw], 13
- Nampamela**, *alt. dial.* Makhuwa [vmw], 13
dial. Makhuwa-Marrevone [xmc], 13
- Namwaní**, *alt.* Mwani [wmw], 15
- Nathembo** [nte], 16, 21
- Ndanda**, *alt. dial.* Ndau [ndc], 16
- Ndau** [ndc], 16, 21
dial. Ndau [ndc], 16
- Ndonde**, *alt. dial.* Makonde [kde], 14
- Ndonge**, *dial.* Chopi [cce], 10
- Ndxhonge**, *dial.* Tswa [tsc], 19
- Ndzawu**, *alt.* Ndau [ndc], 16
- Ngoni**, *alt.* Xingoni [xnq], 20
dial. Chichewa [nya], 17
- Ngulu**, *alt.* Lomwe [ngl], 13
- Nguru**, *alt.* Lomwe [ngl], 13
- Ngwalungu**, *dial.* Tsonga [tso], 19
- Nhayi**, *dial.* Tswa [tsc], 19
- Njao**, *alt.* Ndau [ndc], 16
- Nkojo**, *dial.* Mwani [wmw], 15
- North Sena**, *alt. dial.* Sena [seh], 18
- Nsenga** [nse], 16, 21
- Nsimbwa**, *dial.* Mwani [wmw], 15
- Nyambe**, *dial.* Tonga [toh], 19
- Nyamuka**, *dial.* Manyika [mxc], 15
- Nyanja** [nya], 17, 21
dial. Chichewa [nya], 17
- Nyaringa**, *dial.* Chuwabu [chw], 10
- Nyasa**, *dial.* Chichewa [nya], 17
- Nyasa-Cewa**, *alt. dial.* Chichewa [nya], 17
- Nyatwe**, *dial.* Manyika [mxc], 15
- Nyongwe**, *alt.* Nyungwe [nyu], 17
- Nyungwe** [nyu], 17, 21
- Palma**, *alt. dial.* Makwe [ymk], 15
alt. Makwe [ymk], 15
- Phimbi** [phm], 17, 21
- Phodzo**, *alt. dial.* Sena [seh], 18
- Pimbi**, *alt.* Phimbi [phm], 17
- Podzo**, *dial.* Sena [seh], 18
- Português**, *alt.* Portuguese [por], 17
- Portuguese** [por], 17

- Puthsu**, *alt. dial.* Sena [seh], 18
- Putru**, *dial.* Ronga [rng], 18
- Quimuane**, *alt.* Mwani [wmw], 15
- Quissanga**, *alt. dial.* Mwani [wmw], 15
- Rati**, *dial.* Makhuwa-Saka [xsq], 14
- Rhonga**, *alt.* Ronga [rng], 18
- Ronga** [rng], 18, 21
- Rue**, *alt.* Barwe [bwg], 10
- Saaka**, *alt.* Makhuwa-Saka [xsq], 14
- Saanga**, *alt.* Makhuwa-Saka [xsq], 14
- Saka**, *alt.* Makhuwa-Saka [xsq], 14
dial. Makhuwa-Saka [xsq], 14
- Sakaji**, *alt.* Nathembo [nte], 16
- Sakati**, *alt.* Nathembo [nte], 16
- Sanagage**, *alt.* Nathembo [nte], 16
- Sanga**, *alt.* Makhuwa-Saka [xsq], 14
- Sangaje**, *alt.* Nathembo [nte], 16
- Sangaji**, *alt.* Nathembo [nte], 16
- Sangwe**, *dial.* Sena [seh], 18
- Sankaji**, *alt.* Nathembo [nte], 16
- Sare**, *alt. dial.* Sena [seh], 18
- Sena** [seh], 18, 21
- Senga**, *alt.* Nsenga [nse], 16
- Senji**, *alt. dial.* Ndau [ndc], 16
- Sewi**, *dial.* Tonga [toh], 19
- Shanga**, *dial.* Ndau [ndc], 16
- Shangaan**, *alt. dial.* Tsonga [tso], 19
- Shangana**, *alt. dial.* Tsonga [tso], 19
- Sheetshwa**, *alt.* Tswa [tsc], 19
- Shengwe**, *alt.* Tonga [toh], 19
- shiChopi**, *alt.* Chopi [cce], 10
- Shicopi**, *alt.* Chopi [cce], 10
- Shilanganu**, *alt. dial.* Tsonga [tso], 19
- Shilenge**, *alt.* Chopi [cce], 10
- Shilengwe**, *alt. dial.* Tswa [tsc], 19
- Shimakonde**, *alt.* Makonde [kde], 14
- Shingwalungu**, *alt. dial.* Tsonga [tso], 19
- Shiputhsu**, *alt. dial.* Sena [seh], 18
- Shirima**, *alt.* Makhuwa-Shirima [vmk], 14
- Shironga**, *alt.* Ronga [rng], 18
- Shitshwa**, *alt.* Tswa [tsc], 19
- Shitsonga**, *alt.* Tsonga [tso], 19
- siSwati**, *alt.* Swati [ssw], 18
- Siswazi**, *alt.* Swati [ssw], 18
- Sofala**, *alt.* Ndau [ndc], 16
- South Maca**, *alt.* Makhuwa-Marrevone [xmc], 13
- South Sena**, *alt. dial.* Sena [seh], 18
- Southeast Shona**, *alt.* Ndau [ndc], 16
- Swahili** [swh], 18, 21
- Swati** [ssw], 18, 21
- Swazi**, *alt.* Swati [ssw], 18
- Takwane** [tke], 18, 21
- Tavara**, *alt.* Tawara [twl], 19
- Tawala**, *alt.* Tawara [twl], 19
- Tawara** [twl], 19, 21
- Tawara-Chioco**, *dial.* Tawara [twl], 19
- Tawara-Daque**, *dial.* Tawara [twl], 19
- Tekela**, *alt.* Swati [ssw], 18
- Tekeza**, *alt.* Swati [ssw], 18
- Teta**, *alt.* Nyungwe [nyu], 17
- Tete**, *alt.* Nyungwe [nyu], 17
- Teve**, *alt.* Tewe [twx], 19
- Tewe** [twx], 19, 21
- Thakwani**, *alt.* Takwane [tke], 18
- Theithe**, *pej. alt.* Nathembo [nte], 16
- Thonga**, *alt.* Tsonga [tso], 19
- Tonga** [toh], 19, 21
alt. Tsonga [tso], 19
dial. Chopi [cce], 10
- Tonga-Inhambane**, *alt.* Tonga [toh], 19
- Tschopi**, *alt.* Chopi [cce], 10
- Tshwa**, *alt.* Tswa [tsc], 19
dial. Tswa [tsc], 19

- Tsonga** [tso], 19, 21
Tswa [tsc], 19, 21
Tunduru Yao, *dial.* Yao [yao], 20
Txitxopi, *alt.* Chopi [cce], 10
Txopi, *alt.* Chopi [cce], 10
Txuwabo, *alt.* Chuwabu [chw], 10
Unyama, *dial.* Manyika [mxc], 15
Utee, *alt.* Tewe [twx], 19
Vadanda, *alt. dial.* Ndau [ndc], 16
Vadonde, *dial.* Makonde [kde], 14
Vamakonde, *dial.* Makonde [kde], 14
Vamwalu, *dial.* Makonde [kde], 14
Vamwambe, *dial.* Makonde [kde], 14
Vateve, *alt.* Tewe [twx], 19
Vatsonga, *alt.* Tsonga [tso], 19
Veiao, *alt.* Yao [yao], 20
Vila, *alt. dial.* Tsonga [tso], 19
Wadondo, *alt. dial.* Ndau [ndc], 16
Wajao, *alt.* Yao [yao], 20
Walomwe, *alt.* Lomwe [ngl], 13
Watande, *alt. dial.* Ndau [ndc], 16
Wateve, *alt.* Tewe [twx], 19
West Makhuwa, *alt.* Lomwe [ngl], 13
West Makua, *alt.* Makhuwa-Shirima [vmk], 14
Western Makua, *alt.* Lomwe [ngl], 13
Wibo, *dial.* Mwani [wmw], 15
Xanga, *alt. dial.* Ndau [ndc], 16
Xichangana, *alt. dial.* Tsonga [tso], 19
Xidzivi, *alt. dial.* Tswa [tsc], 19
Xilenge, *alt.* Chopi [cce], 10
Xingoni [xnq], 20, 21
Xirhonga, *alt.* Ronga [rng], 18
Xirima, *alt.* Makhuwa-Shirima [vmk], 14
Xironga, *alt.* Ronga [rng], 18
Xitshwa, *alt.* Tswa [tsc], 19
Xitsonga, *alt.* Tsonga [tso], 19
Xitswa, *alt.* Tswa [tsc], 19
Xuabo, *alt.* Chuwabu [chw], 10
Yao [yao], 20, 21
Yawo, *alt.* Yao [yao], 20
Yungwe, *alt.* Nyungwe [nyu], 17
Zulu [zul], 20, 21
Zunda, *alt.* Zulu [zul], 20

Bibliography

- Afido, P., G. Firmino, J. Heins, S. Mbuub, and M. Trinta (eds.). 1989. *Seminário sobre a padronização da ortografia de línguas Moçambicanas*. Maputo: Faculdade de Letras, Universidade Eduardo Mondlane.
- Guérois, R. 2015. *A grammar of Cwabo (Mozambique, Bantu P34)*. Doctoral dissertation. Université Lumière Lyon 2.
- Lewis, M. P. and G. F. Simons. 2010. Assessing endangerment: Expanding Fishman's GIDS. *Revue Roumaine de Linguistique* 55(2):103–120. http://www.lingv.ro/RRL_2_2010_art01Lewis.pdf. Accessed 11 January 2011.
- Marcoux, R., L. Richard and A. Wolff. 2022. *Estimation des francophones dans le monde en 2022: Sources et démarches méthodologiques*. Note de recherche de l'ODSEF, Québec, Mars 2022. Québec: Université Laval, Observatoire démographique et statistique de l'espace francophone.