

# Ethnologue: Languages of Pakistan

## Twenty-sixth edition data

David M. Eberhard, Gary F. Simons, and Charles D. Fennig, Editors

Based on information from the *Ethnologue*, 26th edition:

Eberhard, David M., Gary F. Simons, and Charles D. Fennig (eds.). 2023.  
*Ethnologue: Languages of the World*. Twenty-sixth edition. Dallas, Texas:  
SIL International. Online: <http://www.ethnologue.com>.

*For personal use only*

Permission to distribute or reuse this work (in whole or in part)  
may be obtained through the Copyright Clearance Center at  
<http://www.copyright.com>.

## Contents

List of Abbreviations	3
How to Use This Digest	4
Country Overview	6
Language Status Profile	7
Statistical Summaries	8
Alphabetical Listing of Languages	11
Language Maps	37
Languages by Population	39
Languages by Status	45
Languages by Province	55
Languages by Family	57
Language Code Index	60
Language Name Index	62
Bibliography	71

Copyright © 2023 by SIL International

*All rights reserved.* No part of this publication may be reproduced, redistributed, or transmitted in any form or by any means—electronic, mechanical, photocopying, recording, or otherwise—without the prior written permission of SIL International, with the exception of brief excerpts in articles or reviews.

## List of Abbreviations

A	Agent in constituent word order
<i>alt.</i>	alternate name for
<i>alt. dial.</i>	alternate dialect name for
AOV	Agent-Object-Verb
BBC	British Broadcasting Corporation
C	Consonant in canonical syllable patterns
<i>Class</i>	Language classification
CSICH	Convention for the Safeguarding of Intangible Cultural Heritage (2003)
DBS	Deaf Bible Society
<i>dial.</i>	primary dialect name for
DOOR	Deaf Opportunity Outreach
ICCPR	International Covenant on Civil and Political Rights (1966)
km	kilometer(s)
L1 / L2	first language / second (or other additional) language
<i>Lg Dev</i>	Language development
<i>Lg Use</i>	Language use
m	meter(s)
P	Patient in constituent word order
PARADISEC	Pacific And Regional Archive for Digital Sources In Endangered Cultures
<i>pej.</i>	pejorative
pl.	plural
S	Subject in constituent word order
sg.	singular
SIL	SIL International
SOV	Subject-Object-Verb
<i>Type</i>	Typological information
UNCRPD	United Nations Convention on the Rights of Persons with Disabilities (2006)
UNDRIP	United Nations Declaration on the Rights of Indigenous Peoples (2007)
UNESCO	United Nations Educational, Scientific, and Cultural Organization
V	Vowel in canonical syllable patterns

## How to Use This Digest

This *Ethnologue* country digest provides an extract of the information about the language situation in Pakistan that is published in the 26th edition of *Ethnologue: Languages of the World* (see <http://www.ethnologue.com>), including some ways of presenting the information that are not available in the online version. The digest begins with a “Country Overview” (page 6) and “Statistical Summaries” (page 8) of languages and number of speakers by language size, by language status, and by language family.

The “Alphabetical Listing of Languages” (page 11) provides detailed information on the 90 languages listed in the *Ethnologue* for the country of Pakistan. This includes languages that are indigenous to the country, languages that have developed well-established multigenerational speaker communities after immigrating in the past, and languages that have a significant presence in the country but are not established (that is, not being transmitted to the next generation within the country). A complete language entry has the following form and content:

**Primary language name** [ISO 639-3 code] (Alternate names). Autonym. *Users*: Country user population. Population stability comment. Population remarks. Monolingual population. Ethnic population. *Location*: Location. *Status*: EGIDS level. Special cases. Language function in country. *Class*: Linguistic classification. Macrolanguage membership. *Dialects*: Dialect names. Intelligibility and dialect relations. Lexical similarity. *Type*: Linguistic typology information. *Lg Use*: Remarks on use of the language. Domains of use. User age range. Language attitudes. Bilingualism remarks. Use as second language. *Lg Dev*: Literacy rates. Literacy remarks. Use in education. Publications and use in media. Revitalization efforts. Language development agencies. *DLS*: Digital support. *Writing*: Scripts used. *Other*: Non-indigenous. General remarks. Religion. Macrolanguage member languages. *Map*: Map page. *Worldwide*: Total population in all countries. Other countries where used.

See <http://www.ethnologue.com/methodology/#languagePages> for a full description of these information elements. If the autonym contains the “?” character, this indicates a complex non-Roman character that the PDF-creating software we are using is not able to render. We regret the inconvenience.

The “Language Maps” (page 37) show the locations of the listed languages. If the location of a language is given on a map, the *Map* element of the language entry indicates the page number of the map. If the language is identified on a map by name, but that name differs from the primary name in the language entry, the name on the map is given in parentheses. If the language is represented on the map by an index number, rather than by its name, the index number is given following the page number (with a colon as separator).

Many ways of finding languages are provided. “Languages by Population” (page 39) lists the languages in order of their first-language speaker populations. “Languages by Status” (page 45) lists the languages by their level of development or endangerment as measured on EGIDS, the

Expanded Graded Intergenerational Disruption Scale (Lewis and Simons 2010). “Languages by Province” (page 55) lists the top-level administrative subdivisions of Pakistan and the languages located within each. “Languages by Family” (page 57) lists the languages by their linguistic classifications. “Language Code Index” (page 60) gives an alphabetical listing of all the three-letter codes from ISO 639-3 that are used in this digest to uniquely identify languages. “Language Name Index” (page 62) lists every name that appears in the language listings as a primary or alternate name of a language or dialect. A total of 370 unique names are associated with the 90 languages described in this digest.

Finally, a listing of all the published sources cited within this digest is found in “Bibliography” (page 71). The published sources are cited using standard in-text citations enclosed in parentheses, consisting of the author’s or editor’s surname followed by the year of publication. Unpublished sources including personal communications and unpublished reports are also acknowledged when specific statements or facts are attributed to them. They are identified using in-text citations enclosed in parentheses in which the year of the communication is given first, followed by the source’s first initial and surname. In such a case, there is no corresponding entry in the bibliography.

This digest is designed for use in both digital and print formats. The cross-references are thus rendered as page numbers that are hyperlinks. When using the document in printed form, simply turn to the referenced page by number. When using it in digital form, click on the blue text to jump to the cross-referenced location.

If you believe any of the information about a language in this digest is in error or if you are able to supply missing information, please send your proposed change to the editor using one of the means given below. Provide as much information as possible about the source of your information. Full bibliographic details of published sources are especially helpful.

The preferred method of submitting corrections and additions is to join our Contributor Program by applying at <http://www.ethnologue.com/contributor-program>. With a contributor account you will be entitled to complimentary access to the website and will be able to use the Contribute tab on the page for a language or country in order to propose corrections and additions. The advantage of giving feedback in this way is that it becomes part of the public record on the website. You will also be automatically notified of the editorial action.

Alternatively, you may submit corrections and additions by e-mail to:

Ethnologue\_Editor@sil.org

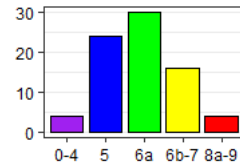
Or by post to:

Editor, Ethnologue  
SIL International  
7500 West Camp Wisdom Road  
Dallas, TX 75236, U.S.A.

## Country Overview

Name of country	Pakistan
Other names	Islamic Republic of Pakistan
Population	225,200,000 (2021 census)
Principal languages	English, Urdu
Literacy rate	59% (2017 UNESCO)
Deaf population	244,000
International conventions	CSICH (2005), ICCPR (2010), UNCRC (2011), UNDRIP (2007)
General references	Addleton 1986, Bashir 2003, Campbell and King 2011, Decker and Decker 1992, Masica 1991, Morgenstierne 1974, Payne 1987, Rensch et al 1992, Shackleton 1979, Shackleton 1980, Strand 1973, Strand 2001, Van Driem 2007

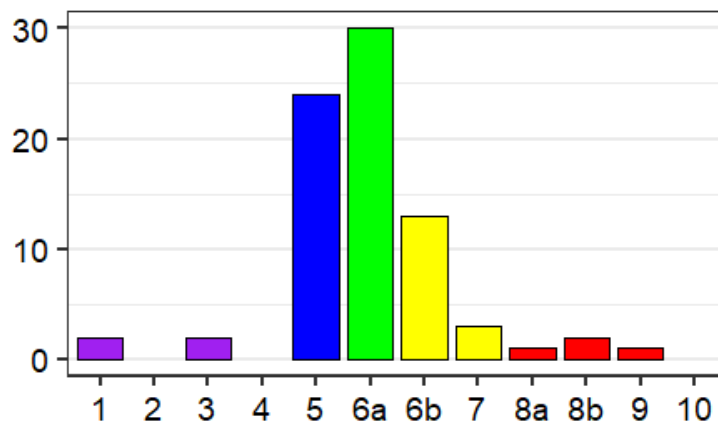
Language counts	<p>The number of established languages listed for Pakistan is 78. All are living languages. Of these, 69 are indigenous and 9 are non-indigenous. Furthermore, 4 are institutional, 24 are developing, 30 are vigorous, 16 are in trouble, and 4 are dying. Also listed are 9 unestablished languages and 3 macrolanguages.</p>
-----------------	---



See the next page for an explanation of the summary categories for language vitality used in the above counts and graph.

## Language Status Profile

The following histogram gives a graphic profile of the established languages in Pakistan with respect to their status of language development versus language endangerment. This includes all of the languages appearing in the “Alphabetical Listing of Languages” (page 11) that report an EGIDS level after *Status*; macrolanguages and unestablished languages are not included in the profile. The horizontal axis plots the estimated level of development or endangerment as measured on the EGIDS scale (Lewis and Simons 2010). The height of each bar indicates the number of languages that are estimated to be at the given level. Consult “Languages by Status” (page 45) in order to see the specific languages for each level.



The color coding of the bars in the histogram above matches the color scheme used in the summary profile graph on the preceding page. In this scheme, the EGIDS levels are grouped as follows:

- Purple = Institutional (EGIDS 0–4) — The language has been developed to the point that it is used and sustained by institutions beyond the home and community.
- Blue = Developing (EGIDS 5) — The language is in vigorous use, with literature in a standardized form being used by some though this is not yet widespread or sustainable.
- Green = Vigorous (EGIDS 6a) — The language is in vigorous use among all generations and remains unstandardized.
- Yellow = In trouble (EGIDS 6b–7) — Intergenerational transmission is in the process of being broken, but the child-bearing generation can still use the language so it is possible that revitalization efforts could restore transmission of the language in the home.
- Red = Dying (EGIDS 8a–9) — The only fluent users (if any) are older than child-bearing age, so it is too late to restore natural intergenerational transmission through the home; a mechanism outside the home would need to be developed.
- Black = Extinct (EGIDS 10) — The language is no longer used and no one retains a sense of ethnic identity associated with the language.

## Statistical Summaries

The “Alphabetical Listing of Languages” (page 11) provides a detailed listing of all the languages of Pakistan. This section steps back from the detail to offer a summary view of the language situation in the country. Specifically, it offers three numerical tabulations of the living established languages of Pakistan and their users: by language size, by language status, and by language family.

### Summary by language size

Table 1 summarizes the distribution of living established languages in Pakistan by number of L1 speakers. The *Population range* column categorizes the sizes of the languages by order of magnitude (in terms of the number of digits in the population of first-language speakers). Consult “Languages by Population” (page 39) for a listing of the specific languages in each range category.

The *Count* column gives the number of living established languages within the specified population range. The *Percent* column gives the share of the count for that population range as a percentage of the total number of languages given at the bottom of the Count column. The *Cumulative* column gives the cumulative sum of the percentage of languages going from top to bottom in the column.

The *Total* column gives the total L1 population of all the languages in the given range category. The second *Percent* column gives the percentage of the total country population as estimated at the bottom of the Total column. Note that if the table has a row for Unknown, representing languages for which the *Ethnologue* does not have a population estimate, the calculation of population percentage is not able to take those languages into account. The final *Cumulative* column gives the cumulative sums of the population percentages going from top to bottom in the column.

**Table 1:** Distribution of languages by number of first-language speakers

Population range	Living languages			Number of speakers		
	Count	Percent	Cumulative	Total	Percent	Cumulative
10,000,000 to 99,999,999	6	7.7	7.7%	176,200,000	81.28166	81.28166%
1,000,000 to 9,999,999	10	12.8	20.5%	34,100,000	15.73045	97.01210%
100,000 to 999,999	18	23.1	43.6%	5,818,000	2.68386	99.69596%
10,000 to 99,999	18	23.1	66.7%	593,700	0.27388	99.96984%
1,000 to 9,999	16	20.5	87.2%	63,200	0.02915	99.99899%
100 to 999	5	6.4	93.6%	2,040	0.00094	99.99994%
10 to 99	2	2.6	96.2%	140	0.00006	100.00000%
0	1	1.3	97.4%		0.00000	100.00000%

Population range	Living languages			Number of speakers		
	Count	Percent	Cumulative	Total	Percent	Cumulative
Unknown	2	2.6	100.0%			
<i>Totals</i>	78	100.0		216,777,080	100.00000	

### Summary by language status

Table 2 summarizes the distribution of living established languages in Pakistan by their status in terms of language development or language endangerment. The *EGIDS* column categorizes the languages by their level on the EGIDS scale. Consult “Languages by Status” (page 45) for a listing of the specific languages that have been assigned to each level. Note that the EGIDS level reported here is for the status of the language in Pakistan. Languages that are also used in other countries may be assigned to a different EGIDS level in those countries.

The next six columns are as in Table 1. In addition, the *Mean* column gives the average L1 population of all the languages with the given EGIDS level and the *Median* column gives the median L1 population for the languages at that level, that is, half of the languages at that level have a higher population and half have a lower population. If there are any languages with an unknown population, these are ignored in the calculation of the mean and the median.

**Table 2:** Distribution of languages by vitality status

EGIDS	Living languages			Number of speakers					
	Count	Percent	Cumulative	Total	Percent	Cumulative	Mean	Median	
1	2	2.6	2.6%	15,016,300	6.9271	6.9271%	7,508,150	7,508,150	
3	2	2.6	5.1%	31,550,000	14.5541	21.4812%	15,775,000	15,775,000	
5	24	30.8	35.9%	156,643,400	72.2601	93.7413%	6,526,808	1,050,000	
6a	30	38.5	74.4%	13,289,600	6.1305	99.8719%	442,987	22,700	
6b	13	16.7	91.0%	250,070	0.1154	99.9872%	19,236	1,000	
7	3	3.8	94.9%	26,600	0.0123	99.9995%	8,867	13,300	
8a	1	1.3	96.2%	700	0.0003	99.9998%	700	700	
8b	2	2.6	98.7%	410	0.0002	100.0000%	205	205	
9	1	1.3	100.0%		0.0000	100.0000%			
<i>Totals</i>	78	100.0		216,777,080	100.0000				

## Summary by language family

The genealogical classifications given in the language entries of the “Alphabetical Listing of Languages” (page 11) name 5 different top-level groups. Table 3 summarizes the distribution of living established languages and their L1 populations within these families. The columns are as for table 2, with the exception that *Cumulative* is excluded since there is no inherent ordering of the families.

**Table 3:** Distribution of languages by language family

Language family	Living languages		Number of speakers			
	<i>Count</i>	<i>Percent</i>	<i>Total</i>	<i>Percent</i>	<i>Mean</i>	<i>Median</i>
Dravidian	2	2.6	2,642,000	1.2	1,321,000	1,321,000
Indo-European	73	93.6	212,504,080	98.0	2,911,015	39,000
Language isolate	1	1.3	126,000	0.1	126,000	126,000
Sign language	1	1.3	1,080,000	0.5	1,080,000	1,080,000
Sino-Tibetan	1	1.3	425,000	0.2	425,000	425,000
<i>Totals</i>	78	100.0	216,777,080	100.0		

## Alphabetical Listing of Languages

**Aer** [aeq]. *Users*: 100 (1998). Women monolingual. Ethnic population: 330 Aer in Deh area. *Location*: Sindh province: Jikrio Goth near Kunri; Deh area, Hyderabad, Jamesabad. *Status*: 6b (Threatened). *Class*: Indo-European, Indo-Iranian, Indo-Aryan, Intermediate Divisions, Western, Gujarati. *Dialects*: Jikrio Goth Aer, Jamesabad Aer. Lexical similarity: 78% with Katai Meghwar and Kachi Bhil—both dialects of Kachi Koli [gjk], 75%–77% with the Rabari dialect of Kachi Koli [gjk], 76% with Kachi Koli [gjk]. *Lg Use*: Some young people, all adults. Also use Gujarati [guj]. Also use Saraiki [skr]. Also use Sindhi [snd], especially adult men for common topics. 100% of boys and 25% of girls attend Sindhi medium schools. Also use Western Punjabi [pnb], especially adult men of Jikrio Goth, but only for common topics. *Lg Dev*: Literacy rate in L2: 15% in Sindhi [snd]. *DLS*: Emerging (0.01). *Writing*: Unwritten. *Other*: Unusual interrogative word suggests possible historical connection with Western Rajasthani group. Speakers in Pakistan running out of marriage possibilities and may have to move to India. Other Aer people in Nawabshah, Sindh reportedly speak a different language, dress differently, and do not intermarry with this group. Hindu. *Map*: 38.

**Badeshi** [bdz] (Badakhshi). *Users*: No known L1 speakers. Last speakers survived into the 2000s. Ethnic population: 2,830 (2000). *Location*: Khyber Pakhtunkwa province: Bishigram valley upper reaches, Swat Kohistan; small groups in Pooran Chakesar, Swat, and Tirat valleys; Alai. *Status*: 9 (Dormant). *Class*: Indo-European, Indo-Iranian, Unclassified. *Lg Use*: Shifted to Torwali [trw]. *DLS*: Still. *Writing*: Unwritten. *Other*: Muslim.

**Bagri** [bgq] (Bagari, Bagria, Bagris, Bahgri, Baorias, Bawri). *Users*: 306,000 in Pakistan (2018). *Location*: Punjab and Sindh provinces. *Status*: 6a\* (Vigorous). *Class*: Indo-European, Indo-Iranian, Indo-Aryan, Intermediate Divisions, Western, Rajasthani, Unclassified. *Type*: SOV; tonal, 3 tones. *Lg Use*: Also use Sindhi [snd]. Also use Urdu [urd]. *Lg Dev*: Literacy rate in L2: Below 5%. Grammar. NT: 2014. *Writing*: Devanagari script. *Other*: Non-indigenous. Distinct from Vaghri [vgr]. Nomadic. *Map*: 38. *Worldwide*: Total users in all countries: 2,196,000. Indigenous in: India.

**Balochi, Eastern** [bgp] (Baloci, Baluchi, Baluci, Eastern Hill Balochi). *Users*: 2,930,000 in Pakistan (2017 census). *Location*: Balochistan province: northeast; Punjab province: southwest; Sindh province: northwest. *Status*: 5\* (Developing). *Class*: Indo-European, Indo-Iranian, Iranian, Western, Northwestern, Balochi. A member of macrolanguage Baluchi [bal]. *Type*: SOV; both prepositions and postpositions; gender (masculine/feminine); no articles; case-marking (5 cases); ergativity; passives; tense and aspect; 23 consonant and 8 vowel phonemes; non-tonal. *Lg Use*: Also use Saraiki [skr]. *Lg Dev*: Literacy rate in L2: 5%–15%. Radio. Grammar. NT: 2013. *DLS*: Ascending (0.34). *Writing*: Arabic script, Naskh variant. Arabic script, Nastaliq variant, primary usage. *Other*: Balochi is the official spelling in Pakistan. A major language in Pakistan. Distinct from Western Balochi [bgn] and Southern Balochi [bcc]. A small body of literature. Muslim. *Map*: 38. *Worldwide*: Total users in all countries: 2,930,800. Also established in: India.

**Balochi, Southern** [bcc] (Baloci, Baluchi, Baluci, Makrani). *Users*: 2,450,000 in Pakistan (2017 census). *Location*: South Balochistan and Sindh provinces, Karachi. *Status*: 5\* (Developing). *Class*: Indo-European, Indo-Iranian, Iranian, Western, Northwestern, Balochi. A member of macrolanguage Baluchi [bal]. *Dialects*: Coastal Balochi, Kechi (Keci), Makrani (Lotuni). Distinct from Eastern Balochi [bgb] and fairly distinct from Western Balochi [bgn]. *Lg Dev*: Literacy rate in L2: 5%–15%. Curriculum is developed for a pre-primary 2-year multilingual education program that bridges children from Balochi to Urdu [urd] or Sindhi [snd], and English [eng] (2021 S. Zubair). Taught as subject in some primary and secondary schools. Taught as subject in some tertiary schools. Radio. Dictionary. Grammar. Texts. NT: 1999. *DLS*: Ascending (0.18). *Writing*: Arabic script, Naskh variant. Arabic script, Nastaliq variant, primary usage. Latin script. *Other*: Balochi is the official spelling in Pakistan. Muslim. *Map*: 38. *Worldwide*: Total users in all countries: 3,570,700. Also indigenous in: Iran. Also established in: Oman, United Arab Emirates. Unestablished in: Qatar, Saudi Arabia.

**Balochi, Western** [bgn] (Baloci, Baluchi, Baluci). *Users*: 1,050,000 in Pakistan (2017 census). *Location*: Balochistan province: northwest; Sindh province: Dadu district. *Status*: 5\* (Developing). *Class*: Indo-European, Indo-Iranian, Iranian, Western, Northwestern, Balochi. A member of macrolanguage Baluchi [bal]. *Dialects*: Lashari, Rakhshani (Raxshani), Sarawani. Strongly influenced by Farsi, but not intelligible with Farsi [prs]. *Lg Use*: Used as L2 by Brahui [brh]. *Lg Dev*: Literacy rate in L1: 1%–5%. Literacy rate in L2: 5%–15%. Taught as subject in some tertiary schools. Newspapers. Radio. Dictionary. Grammar. Texts. Bible portions: 1984–2005. *DLS*: Emerging (0.05). *Writing*: Arabic script, Naskh variant. Arabic script, Nastaliq variant, primary usage. Cyrillic script, used in Turkmenistan. *Other*: Balochi is the official spelling in Pakistan. A small body of literature. Muslim. *Map*: 38. *Worldwide*: Total users in all countries: 2,283,350. Also indigenous in: Afghanistan, Iran. Also established in: Turkmenistan. Unestablished in: Tajikistan.

**Balti** [bft] (Baltistani, Bhotia of Baltistan, Byltae, Sbalti). *Users*: 425,000 in Pakistan (2018). *Location*: Gilgit Baltistan province: Hunza-Nagar district; Baltistan region, Gultari, Khapalu, Kharmang, Rondu, Shigar, and Skardu valleys. *Status*: 5\* (Developing). *Class*: Sino-Tibetan, Tibeto-Burman, Western Tibeto-Burman, Bodish, Central Bodish, Western. *Dialects*: Chorbat is most divergent dialect. Lexical similarity: 87%–100% among dialects, 78%–85% with Purik [prx]. *Lg Use*: Also use Shina [scl]. Also use Urdu [urd]. *Lg Dev*: Literacy rate in L2: 3%–5% in Urdu [urd]. Dictionary. Texts. Bible portions: 1903–1940. *DLS*: Ascending (0.16). *Writing*: Arabic script, Naskh variant, used since the 17th century. Arabic script, Nastaliq variant, used since the 17th century, primary usage. Balti script, no longer in use. Tibetan script, used between 8th and 17th century, recent efforts to revive usage. *Other*: Muslim. *Map*: 38:7. *Worldwide*: Total users in all countries: 438,800. Also indigenous in: India.

**Baluchi** [bal]. A macrolanguage. Population total all languages (L1 only): 8,784,850. *DLS*: . *Other*: Includes: Eastern Balochi [bgb], Southern Balochi [bcc], Western Balochi [bgn]. *Worldwide*: Total users in all countries: 8,784,850.

**Bateri** [btv] (Batera Kohistani, Baterawal, Baterawal Kohistani, Bateri Kohistani, Bhat'e-sa z'ib).

*Users:* 39,000 in Pakistan (2018). *Location:* Khyber Pakhtunkwa province: south Kohistan district; Indus river east bank, some north of Besham, Batera area. *Status:* 6a\* (Vigorous). *Class:* Indo-European, Indo-Iranian, Indo-Aryan, Outer Languages, Northwestern, Dardic, Kohistani. *Dialects:* None known. Reportedly more similar to Indus Kohistani [mvy] than to Kohistani Shina [plk], but distinct from both. Lexical similarity: 58%–61% with Indus Kohistani [mvy], 60% with Gowro [gwf], 54% with Chilisso [clh], 42% with Mankiyali [nlm], 29% with Kohistani Shina [plk] and Torwali [trw], 27% with Gawri [gwc]. *Lg Use:* Vigorous. Also use Kohistani Shina [plk]. *DLS:* Still. *Writing:* Unwritten. *Map:* 38:23. *Worldwide:* Total users in all countries: 39,800. Also established in: India.

**Bengali** [ben]. *Users:* 326,000 in Pakistan (2018). *Status:* Unestablished. *Class:* Indo-European, Indo-Iranian, Indo-Aryan, Outer Languages, Eastern, Bengali-Assamese. *Type:* SOV; postpositions; noun head both initial and final; 3 genders: male, female, neuter; content q-word initial and final; clause constituents indicated by case-marking (5 cases) and word order; verb affixes mark person, number; definite article affix; tense; passives and voice; causatives; comparatives; non-tonal; 35 consonant and 5 vowel phonemes; stress on first syllable. *Lg Dev:* Fully developed. Bible: 1832–2016. *Writing:* Bengali (Bangla) script, primary usage. Braille script. Newa script, no longer in use. *Other:* Non-indigenous. *Worldwide:* Total users in all countries: 272,828,760 (as L1: 233,808,880; as L2: 39,019,880). Global EGIDS level: 1 (National). Indigenous in: Bangladesh, India. Also established in: Nepal, Singapore. Unestablished in: Australia, Belgium, Bhutan, Canada, Denmark, Finland, France, Germany, Greece, Ireland, Italy, Japan, Kuwait, Malaysia, Mauritius, Myanmar, Netherlands, New Zealand, Oman, Saudi Arabia, South Africa, Spain, Sri Lanka, Sweden, Switzerland, Thailand, United Arab Emirates, United Kingdom, United States.

**Bhaya** [bhe]. *Users:* 70 (1998). *Location:* Sindh province: Jamesabad, Kapri Goth, Khipro area, Mirke goth, Mirpurkhas, Phuladia, and a few in Hyderabad. Possibly in India. *Status:* 6b (Threatened). *Class:* Indo-European, Indo-Iranian, Indo-Aryan, Western Hindi, Unclassified. *Dialects:* Similarity of key morphemes: The possessive postposition with, g-, contrasts with all other languages in the area. Gender endings match Marwari [mve]. May be the same as Bhoyari dialect of Malvi [mup] in India. May be in Western Hindi group. Lexical similarity: 84% with Marwari [mve], 75% with Malhi dialect of Dhatki [mki], 73% with Bhat, 72%–73% with Goaria [gig], 70%–73% with Sindhi Meghwar dialect of Sindhi Bhil [sbn], 63%–72% with Mogi, 63%–71% with Sindhi Bhil [sbn], 70% with Urdu [urd]. *Lg Use:* Some young people, all adults. *DLS:* Still. *Writing:* Unwritten. *Map:* 38.

**Brahui** [brh] (Birahui, Brahuidi, Brahuigi, Kur Galli). *Users:* 2,640,000 in Pakistan (2017 census). *Location:* Balochistan and Sindh provinces: east in Kalat and Quetta region. *Status:* 5\* (Developing). *Class:* Dravidian, Northern. *Dialects:* Jharawan, Kalat, Sarawan. Kalat is standard dialect, Jharawan is lowland. Low percentage of lexical similarity with surrounding languages. *Type:* SOV; noun head final; case-marking (10 cases); verb affixes mark person, number; tense and aspect; 27 consonant and 9 vowel phonemes; non-tonal. *Lg Use:* Also use Western Balochi [bgn]. *Lg Dev:* Literacy rate in L2: Below 5%. Newspapers. Dictionary. Grammar. Texts. NT: 1998. *DLS:* Ascending (0.14). *Writing:* Arabic script, Naskh variant.

Arabic script, Nastaliq variant, primary usage. Latin script, used in one newspaper. *Other*: Muslim. *Map*: 38. *Worldwide*: Total users in all countries: 2,865,000. Also indigenous in: Afghanistan. Also established in: Iran. Unestablished in: Turkmenistan.

**Brokskat** [bkk]. *Users*: 400 in Pakistan (2022). *Location*: Gilgit-Baltistan province: Ganche district, Ganokh village. *Status*: 6b\* (Threatened). *Class*: Indo-European, Indo-Iranian, Indo-Aryan, Outer Languages, Northwestern, Dardic, Shina. *Lg Use*: Most also use Shina [scl]. *Lg Dev*: Dictionary. Grammar. *Writing*: Balti script. Tibetan script. *Other*: Muslim. *Worldwide*: Total users in all countries: 10,400. Also indigenous in: India.

**Burushaski** [bsk] (Biltum, Brooshaaski, Brushaski, Burucaki, Burucaski, Burushaki, Burushashki, Burushaski Hunza, Burushki, Miša:ski, Mishāski). *Users*: 126,000 in Pakistan (2018), increasing. *Location*: Gilgit Baltistan province: north Gilgit district areas, Hunza-Nagar and Yasin areas; scattered in Gilgit, Kashmir, and various cities. *Status*: 6a\* (Vigorous). *Class*: Language isolate. *Dialects*: Nagar (“Khajuna” pej., Nagir), Hunza (Kunjut), Yasin (Werchikwar). Yasin is geographically separated from other dialects. Lexical similarity: 91%–94% between Nagar and Hunza dialects, 67%–72% between Yasin and Hunza, 66%–71% between Yasin and Nagar. *Type*: SOV. *Lg Use*: Vigorous, but acquiring Urdu [urd] borrowings. Positive attitudes. Also use Khowar [khw], especially Yasin dialect speakers. Also use Urdu [urd], especially women. Used as L2 by Domaaki [dmk], Khowar [khw], Wakhi [wbl]. *Lg Dev*: Literacy rate in L2: 20% in Hunza, less in Nagar. Literature. Dictionary. Grammar. Texts. *DLS*: Emerging (0.06). *Writing*: Arabic script, Naskh variant, in development. Arabic script, Nastaliq variant, primary usage. Latin script. *Other*: Muslim. *Map*: 38:4. *Worldwide*: Total users in all countries: 126,300. Also indigenous in: India.

**Chilisso** [clh] (Chiliss, Galos). *Users*: 1,000 (1992 SIL). Ethnic population: 1,600. *Location*: Khyber Pakhtunkwa province: Kohistan district, Indus river east bank, Indus Kohistan, Koli, Palas area. *Status*: 6b\* (Threatened). *Class*: Indo-European, Indo-Iranian, Indo-Aryan, Outer Languages, Northwestern, Dardic, Kohistani. *Dialects*: None known. Lexical similarity: 70% with Indus Kohistani [mvy], 65%–68% with Gowro [gwf], 54% with Bateri [btv], 48%–56% with Kohistani Shina [plk], 26% with Torwali [trw], 25% with Gawri [gwc]. *Lg Use*: Socially integrated with the Kohistani Shina [plk]. Most also use Kohistani Shina [plk]. *DLS*: Still. *Writing*: Unwritten. *Map*: 38:24.

**Chinese, Mandarin** [cmn]. *Users*: 10,000 in Pakistan (2018). *Status*: Unestablished. *Class*: Sino-Tibetan, Chinese. *Type*: SVO; prepositions; noun head final; 6 full (concrete meaning) word classes; no articles; passives; 24 consonants, 8 vowels, 6 diphthongs; tonal (4 phonemic tones). *Lg Dev*: Fully developed. Bible: 1874–1983. *Writing*: Bopomofo script, used since 1913, revised in 1920 and 1932, mainly used in Taiwan. Braille script. Han script, Simplified variant, used since 1956, official in Mainland China (1956) and Singapore (1969), also used elsewhere. Han script, Traditional variant, used since mid-19th century, official in Taiwan, also used elsewhere. Latin script. *Other*: Non-indigenous. *Worldwide*: Total users in all countries: 1,138,222,350 (as L1: 939,237,350; as L2: 198,985,000). Global EGIDS level: 0 (International). Indigenous in: China. Also established in 17 other countries and unestablished

in 60 more.

**Dameli** [dml] (Damedi, Damel, Damia, Damiabaasha, Gidoji, Gudoji). *Users*: 5,000 (Perder 2013), increasing. *Location*: Khyber Pakhtunkwa province: south Chitral district, Damel valley; 4 main and several smaller villages. *Status*: 6a (Vigorous). *Class*: Indo-European, Indo-Iranian, Indo-Aryan, Outer Languages, Northwestern, Dardic, Kunar. *Dialects*: 2 groups: Shinteri-Dondideri and Swati-Aspar, but no significant dialect variation. Lexical similarity: 44% with Gawar-Bati [gwt], Savi [sdg], and Palula [phl]; 33% with Kamviri [xvi]; 29% with Kati [bsh]. *Lg Use*: Vigorous. Home, community. Used by all. Most also use Northern Pashto [pbu]. Many also use Urdu [urd], especially men; a few women also use a Pashto variety. *Lg Dev*: Grammar. *DLS*: Emerging (0.01). *Writing*: Arabic script, Naskh variant, in development. Arabic script, Nastaliq variant, in development. *Other*: Speakers probably of mixed origin. Language influenced by Nuristani languages. Muslim. *Map*: 38:13.

**Dari** [prs] (Afghan Persian, Badakhshi, Madaglashti). *Users*: 921,000 in Pakistan (2022 Joshua Project), based on ethnicity, including 909,000 ethnic Tajiks who speak Dari. *Location*: Khyber Pakhtunkwa province: southeast Chitral, Shishi Koh valley, Madaglasht village; Karachi, Lahore, Peshawar, Rawalpindi, and other large cities. *Status*: 5\* (Dispersed). *Class*: Indo-European, Indo-Iranian, Iranian, Western, Southwestern, Persian. *Type*: SOV; no articles; verb affixes mark person, number; tense and aspect; causatives; 23 consonants, 7 vowels, 2 diphthongs. *Lg Use*: Most also use Khowar [khw]. Most also use Urdu [urd]. Some also use Gujari [gju]. Some also use Northern Pashto [pbu]. Used as L2 by Hazaragi [haz]. *Lg Dev*: Literature. Newspapers. Periodicals. Radio. TV. Videos. Dictionary. Grammar. Texts. Bible: 2008. *Writing*: Arabic script, Naskh variant, used in print. Arabic script, Nastaliq variant, used in handwriting and for book titles. *Other*: Non-indigenous. Madaglasht community in Chitral came from Badakhshan, Afghanistan 200 years ago. Other communities in Pakistan are primarily refugees or settlers from Afghanistan. Muslim. *Map*: 38:10. *Worldwide*: Total users in all countries: 30,291,510 (as L1: 10,277,510; as L2: 20,014,000). Global EGIDS level: 1 (National). Indigenous in: Afghanistan. Also established in: Iran. Unestablished in: Australia, Belgium, Canada, Germany, Sweden, Turkey, United Kingdom, United States.

**Dehwari** [deh] (Deghwari). *Users*: 19,000 (2018). *Location*: Balochistan province: Kalat and Mastung. *Status*: 6a\* (Vigorous). *Class*: Indo-European, Indo-Iranian, Iranian, Western, Southwestern, Persian. *Lg Dev*: Literacy rate in L2: Below 5%. *DLS*: Still. *Writing*: Unwritten. *Other*: Influenced by Brahui [brh]. *Map*: 38.

**Dhatki** [mki] (Dhati, Thari). *Users*: 190,000 in Pakistan (2018). *Location*: Sindh province: Sanghar and Tharparkar districts. *Status*: 5\* (Developing). *Class*: Indo-European, Indo-Iranian, Indo-Aryan, Intermediate Divisions, Western, Rajasthani, Marwari. *Dialects*: Eastern Dhatki, Southern Dhatki, Central Dhatki, Barage, Malhi. Varies considerably from northern Marwari [mve], though they claim to understand one another. Lexical similarity: 80%–83% with Marwari [mve] dialects, 88% with Dhatki of Rajasthan and Dhatki of Thar. *Lg Use*: Also use Sindhi [snd]. Also use Urdu [urd]. Used as L2 by Jogi [jog], Sindhi Bhil [sbn]. *Lg Dev*: Literacy rate in L1: Below 5%. Literacy rate in L2: Below 5%. Taught as subject in some

primary and secondary schools. Radio. Bible portions: 1999. *DLS*: Emerging (0.04). *Writing*: Arabic script, Naskh variant. *Other*: Hindu, Christian, Muslim. *Map*: 38. *Worldwide*: Total users in all countries: 206,400. Also established in: India.

**Domaaki** [dmk] (Bericho, Dawoodi, Dom, Doma, Dumaki). *Users*: 340 (Matthias 2011), decreasing. Concentrated mostly in one village (Van Driem 2007). *Location*: Gilgit Baltistan province: Hunza-Nagar district, Bakor village, Big Nagar, Gilgit, Mominabad village, Oshkandas east of Gilgit, Punyal, and Shishkat; mainly in Hunza valley. *Status*: 8b (Nearly extinct). *Class*: Indo-European, Indo-Iranian, Indo-Aryan, Intermediate Divisions, Western. *Dialects*: None known. Loanwords from Shina [scl] and Burushaski [bsk], but not mutually intelligible. Lexical similarity: 40% with Gilgit Shina [scl]. *Lg Use*: Home. Elderly only. Many shifted to Burushaski [bsk]. Many shifted to Shina [scl]. Also use Urdu [urd]. *DLS*: Still. *Writing*: Unwritten. *Other*: Not all Doms speak Domaaki; most speakers concentrated in Mominabad and Hunza. Muslim. *Map*: 38:6.

**English** [eng]. Autonym: English. *Users*: 104,016,300 in Pakistan, all users. L1 users: 16,300 in Pakistan (2018). L2 users: 104,000,000 (Ramaswami et al 2012). *Status*: 1 (National). Statutory national language (1973, Constitution, Article 251(2)). *Class*: Indo-European, Germanic, West, English. *Type*: SVO; prepositions; genitives after noun heads; articles, adjectives, numerals before noun heads; question word initial; word order distinguishes subject, object, indirect objects, given and new information, topic and comment; active and passive; causative; comparative; consonant and vowel clusters; 24 consonants, 13 vowels, 8 diphthongs; non-tonal; free stress; phrasal verbs. *Lg Dev*: Taught in all primary and secondary schools. Taught in most tertiary schools. Fully developed. Bible: 1382–2002. *Writing*: Braille script. Deseret Alphabet, developed in 1854 with limited usage until 1877. Duployan shorthand. Latin script, primary usage. Shavian (Shaw) script, no longer in use. *Other*: Non-indigenous. *Worldwide*: Total users in all countries: 1,456,448,320 (as L1: 379,682,200; as L2: 1076,766,120). Global EGIDS level: 0 (International). Indigenous in: Ireland, United Kingdom. Also established in 167 other countries and unestablished in 16 more.

**Gawar-Bati** [gwt] (Arandui, Gowar-Bati, Gowari, Narisati, Narsati, Satre). *Users*: 4,000 in Pakistan (2021). *Location*: Khyber Pakhtunkwa province: south Chitral district, Arandui area; Kunar river area. *Status*: 6a\* (Vigorous). *Class*: Indo-European, Indo-Iranian, Indo-Aryan, Outer Languages, Northwestern, Dardic, Kunar. *Lg Use*: Vigorous. All domains. Most also use Khwar [khw]. Most also use Northern Pashto [pbu]. Some also use Urdu [urd]. *Writing*: Arabic script, Naskh variant. *Other*: Refer to themselves as Kohistani, as do other ethnolinguistic groups in the region. Muslim. *Map*: 38:14. *Worldwide*: Total users in all countries: 36,000. Also indigenous in: Afghanistan.

**Gawri** [gwc] (Bashgharik, Bashkarik, Baskarik, Dir Kohistani, Diri, Dirwali, Gaawro, Garwa, Garwi, Gowri, Kalam Kohistani, Kalami, Kohistana, Kohistani). *Users*: 100,000 (Lunsford et al 2020). *Location*: Khyber Pakhtunkwa province: Swat district, Biar, Lamuti, Rajkot, and Thal villages in Dir Kohistan; upper Swat Kohistan, between Peshmal and Kalam north to Kalam area upper valleys. *Status*: 6b (Threatened). *Class*: Indo-European, Indo-Iranian, Indo-

Aryan, Outer Languages, Northwestern, Dardic, Kohistani. *Dialects*: Kalam, Ushu, Thal, Lamuti (Lamti), Rajkoti (Patrak), Dashwa. Dialect differences do not hinder communication, except speakers of other dialects have difficulty with Rajkot. Lexical similarity: 90%–93% among main dialects; Rajkoti has 75% with Gawri; Dashwa has 77% with Gawri [gwc], and 74% with Rajkoti. *Lg Use*: Apparently few remaining speakers of Dashwa dialect. Some of all ages. Most also use Northern Pashto [pbu], with some youth shifting. Many also use Urdu [urd], but uneducated people have low proficiency. Used as L2 by Kalkoti [xka], Khovar [khw]. *Lg Dev*: Grammar. Texts. *DLS*: Ascending (0.18). *Writing*: Arabic script, Naskh variant. Arabic script, Nastaliq variant, primary usage. *Other*: Most widely understood indigenous language in north Swat and Dir Kohistan. Muslim. *Map*: 38:30.

**Ghera** [ghr] (Bara, Sindhi Ghera). *Users*: 10,000 (1998). *Location*: Sindh province: Hyderabad district, 1 enclave between main bus stop and railway station in Hyderabad city. *Status*: 6a\* (Vigorous). *Class*: Indo-European, Indo-Iranian, Indo-Aryan, Western Hindi, Unclassified. *Dialects*: None known. Quite different grammatically from Gurgula [ggg]; reportedly similar to Urdu [urd]. Lexical similarity: 87% with Gurgula [ggg], 70% with Urdu [urd]. *Lg Use*: Also use Sindhi [snd]. Also use Urdu [urd]. *Lg Dev*: Literacy rate in L2: 20% in Sindhi [snd]. *DLS*: Still. *Writing*: Unwritten. *Other*: Almost totally urbanized. Hindu. *Map*: 38.

**Goaria** [gig]. *Users*: 25,400 (2000). *Location*: Sindh province: widespread (except Karachi), Badin, Larkana, Moro, and Umerkot on lower Indus river valley between Hyderabad and Sukkur. *Status*: 6a (Vigorous). *Class*: Indo-European, Indo-Iranian, Indo-Aryan, Intermediate Divisions, Western, Rajasthani, Marwari. *Dialects*: Maybe the same as Sadri (Gawari) [sck] in India. Lexical similarity: 75%–83% with Jogi, 76%–80% with Marwari [mve] sweeper caste, 72%–78% with Marwari (Meghwar dialect) [mve], 70%–78% with Loarki [lrk]. *Lg Use*: All domains except religion. Used by all. Also use Hindi [hin], for worship. Also use Sindhi [snd], especially adults. *Lg Dev*: Literacy rate in L2: Below 1% in Sindhi [snd]. *DLS*: Still. *Writing*: Arabic script, Naskh variant. *Other*: Hindu.

**Gowro** [gwf] (Gabar Khel, Gabaro). *Users*: 1,000 (2003 J. Baart), decreasing. *Location*: Khyber Pakhtunkwa province: Kohistan district, Kolai area, Mahrin village on Indus east bank. *Status*: 6b (Threatened). *Class*: Indo-European, Indo-Iranian, Indo-Aryan, Outer Languages, Northwestern, Dardic, Kohistani. *Dialects*: None known. Lexical similarity: 65%–68% with Chilisso [clh], 62% with Indus Kohistani [mvy], 60% with Bateri [btv], 41% with Mankiyali [nlm], 40%–43% with Kohistani Shina [plk], 25% with Torwali [trw], 24% with Gawri [gwc]. *Lg Use*: Some young people, all adults. Most also use Kohistani Shina [plk]. *DLS*: Still. *Writing*: Arabic script, Nastaliq variant, in development. *Other*: Ancestral language of the Gabar Khel, a clan residing primarily in Mahrin (Indus Kohistan). Different from Gawri [gwc]. *Map*: 38:25.

**Gujarati** [guj]. *Location*: Sindh and lower Punjab provinces. *Status*: 5\* (Dispersed). *Class*: Indo-European, Indo-Iranian, Indo-Aryan, Intermediate Divisions, Western, Gujarati. *Type*: SOV; postpositions; noun head final; gender (masculine/feminine/neuter); no articles; case-marking (6 cases); verb affixes mark person, number, gender of subject; split ergativity; passives; tense

and aspect; comparatives; 31 consonants, 8 vowels, 2 diphthongs; non-tonal; stress on penultimate syllable. *Lg Use*: Used by all Parsi (5,000), many Ismaili Muslims, and many Hindu sweepers (10,000–100,000). Many Parsi and Ismaili Muslims are literate. Seemingly many Gujarati-speaking sweepers are shifting to Urdu [urd]. Used as L2 by Aer [aeq], Gurgula [ggg], Jogi [jog], Memoni [mby], Parkari Koli [kvx], Vaghri [vgr]. *Lg Dev*: Fully developed. *Bible*: 1823–2005. *Writing*: Braille script. Gujarati script, primary usage. Khojki script. *Other*: Non-indigenous. *Worldwide*: Total users in all countries: 62,116,220 (as L1: 57,076,220; as L2: 5,040,000). Global EGIDS level: 2 (Provincial). Indigenous in: India. Also established in: Bahrain, Fiji, Kenya, Singapore, Tanzania, Zambia. Unestablished in: Australia, Bangladesh, Botswana, Burundi, Canada, Iran, Madagascar, Malawi, Malaysia, Mauritius, New Zealand, Oman, Réunion, South Africa, Sri Lanka, United Kingdom, United States, Zimbabwe.

**Gujari** [gju] (Gogri, Gojari, Gojri, Gujer, Gujjari, Gujuri, Gujuri Rajasthani, Kashmir Gujuri). *Users*: 391,000 in Pakistan (2018). *Location*: Azad Kashmir province: widespread north; Gilgit Baltistan province: Diamer district, Gilgit; Khyber Pakhtunkwa province: east Hazara district, Kaghan valley, scattered in south Chitral district, Dir Kohistan and Swat Kohistan; Punjab province: Rawalpindi district; Islamabad. *Status*: 5\* (Developing). *Class*: Indo-European, Indo-Iranian, Indo-Aryan, Intermediate Divisions, Western, Rajasthani, Unclassified. *Dialects*: Western Gujari, Eastern Gujari. Lexical similarity: 39% with Mankiyali [nlm]. *Lg Use*: Most Gujars in Pakistani Punjab may have shifted to Punjabi [pnb]. Spoken in some pockets of Punjab by immigrants from elsewhere. Used as L2 by Dari [prs]. *Lg Dev*: Taught as subject in primary schools, in 25 schools. Literature. Periodicals. Radio. TV. Dictionary. Grammar. Texts. *Writing*: Arabic script, Naskh variant. Arabic script, Nastaliq variant, primary usage. Devanagari script, plans for future development using this script. *Other*: Some move seasonally with herds. Muslim. *Maps*: 38:9, 38. *Worldwide*: Total users in all countries: 1,696,000. Also indigenous in: India. Also established in: Afghanistan.

**Gurgula** [ggg] (Marwari Ghera). *Users*: 35,300 (2000). *Location*: Sindh province: Bhens colony, Karachi; smaller urban centers of Mirpur Khas, Moro, Panj, Sabura, Shahdadpur, and Tando Allahyar. *Status*: 6a\* (Vigorous). *Class*: Indo-European, Indo-Iranian, Indo-Aryan, Intermediate Divisions, Western, Rajasthani, Unclassified. *Dialects*: None known. Ghera [ghr] is quite different grammatically. Lexical similarity: 87% with Ghera [ghr]. *Lg Use*: All domains. Positive attitudes. Many also use Sindhi [snd]. Many also use Urdu [urd]. Also use Gujarati [guj]. *Lg Dev*: Literacy rate in L2: 5% in Urdu [urd]. *DLS*: Still. *Writing*: Arabic script, Naskh variant. *Other*: Hindu.

**Hazaragi** [haz] (Azargi, Hazara, Hezareh). *Users*: 97,600 in Pakistan (2018). *Location*: Balochistan province: Quetta district; Qunduz area, Karachi and Islamabad. *Status*: 6a\* (Vigorous). *Class*: Indo-European, Indo-Iranian, Iranian, Western, Southwestern, Persian. *Lg Use*: Also use Dari [prs]. Also use Urdu [urd]. *Lg Dev*: Literacy rate in L1: Below 10%. Literacy rate in L2: 10%–30% in Urdu [urd], Dari [prs], or Farsi [pes]. Radio. Dictionary. Bible portions: 2008–2015. *Writing*: Arabic script, Naskh variant. Arabic script, Nastaliq variant, used in handwriting and for book titles. *Other*: Non-indigenous. Alternate names listed refer to the people. Group or regional names are (Central) Dai Kundi, Dai Zangi, Behsud,

Yekaulang, (Southern) Polada, Urusgani, Jaguri, Ghazni Hazaras, Dai Miradad, Kabul. Muslim. *Map*: 38. *Worldwide*: Total users in all countries: 3,660,000. Global EGIDS level: 5 (Developing). Indigenous in: Afghanistan. Also established in: Iran. Unestablished in: Australia, Tajikistan.

**Hindko, Northern** [hno] (Hazara Hindko, Hindko, Kagani, Kaghani, “Hindki” *pej.*). *Users*: 5,250,000 (2020 census), increasing. Total Hindko speakers: 7,000,000 (Lunsford et al 2020). *Location*: Azad Kashmir province: Muzaffarabad district, and Islamabad; Khyber Pakhtunkwa province: Hazara division, Abbotabad and Mansehra districts; Indus and Kaghan valleys and Indus valley tributaries. *Status*: 5 (Developing). *Class*: Indo-European, Indo-Iranian, Indo-Aryan, Intermediate Divisions, Western, Panjabi, Western Panjabi. A member of macrolanguage Lahnda [lah]. *Dialects*: Abbottabad Hindko, Galiyat Hindko, Haripur Hindko, Mansehra Hindko (Muko-Tuko), Tanoli Hindko. Also related to Punjabi [pnb], Saraiki [skr], and Pahari-Potwari [phr]; which have all been called Greater Punjabi, forming part of Lahnda [lah]. Lexical similarity: 82%–92% with Northern Hindko dialects, 67%–82% with Northern and Southern Hindko [hnd] varieties, 36% with Mankiyali [nlm]. *Lg Use*: All domains, except education. Used by all. Positive attitudes. Also use Saraiki [skr]. Also use Urdu [urd], especially the educated, but with varied proficiency. Also use Western Punjabi [pnb], with low proficiency. Used as L2 by Kundal Shahi [shd], Mankiyali [nlm]. *Lg Dev*: Literacy rate in L2: Below 20%. Pilot multilingual education program in development. Literature. Newspapers. Radio. TV. Videos. Grammar. Texts. *DLS*: Emerging (0.12). *Writing*: Arabic script, Naskh variant. Arabic script, Nastaliq variant, primary usage. *Other*: Muslim. *Maps*: 38:21, 38.

**Hindko, Southern** [hnd] (Hindko). *Users*: 1,750,000 (2020). Total Hindko speakers: 7,000,000 (Lunsford et al 2020). *Location*: Khyber Pakhtunkwa province: Kohat and Peshawar districts; Punjab province: Attock district, to south Hazara division; Islamabad. *Status*: 5\* (Developing). *Class*: Indo-European, Indo-Iranian, Indo-Aryan, Intermediate Divisions, Western, Panjabi, Western Panjabi. A member of macrolanguage Lahnda [lah]. *Dialects*: Peshawar Hindko (Peshawari), Attock Hindko (Attock-Haripur Hindko), Kohat Hindko (Kohati), Rural Peshawar Hindko, Avankari Hindko (Talagang), Ghebi, Chhachhi, Sohain (Sawain). The dialect in Dera Ismail Khan, sometimes called ‘Hindko’, is reportedly more similar to Saraiki [skr]. *Lg Use*: Also use Northern Pashto [pbu]. Also use Saraiki [skr]. Also use Urdu [urd]. Also use Western Punjabi [pnb]. *Lg Dev*: Literature. Newspapers. Periodicals. Radio. TV. Videos. Dictionary. *DLS*: Emerging (0.04). *Writing*: Arabic script, Naskh variant. Arabic script, Nastaliq variant, primary usage. *Other*: Muslim. *Maps*: 38:20, 38.

**Jadgali** [jdg] (Jat, Jatgali, Jatki). *Users*: 15,600 in Pakistan (2004 J. Leclerc). *Location*: Balochistan province: Lasbela district; Sindh province: Karachi district. *Status*: 6a\* (Vigorous). *Class*: Indo-European, Indo-Iranian, Indo-Aryan, Outer Languages, Northwestern, Sindhi. *Lg Dev*: Literacy rate in L2: Below 5%. *DLS*: Still. *Writing*: Arabic script, Nastaliq variant. *Other*: Different from Jakati [jat] of Afghanistan and Ukraine. Muslim. *Map*: 38. *Worldwide*: Total users in all countries: 25,600. Also established in: Iran.

**Jandavra** [jnd] (Jhandoria). *Users*: 5,000 (1998). *Location*: Sindh province: Hyderabad to east of

Mirpur Khas. Reportedly also in Jodhpur, Rajasthan, India. *Status*: 6a (Vigorous). *Class*: Indo-European, Indo-Iranian, Indo-Aryan, Intermediate Divisions, Western, Gujarati. *Dialects*: Lexical similarity: 74% with Bagri [bgq] and the Katai Meghwar dialect of Kachi Koli [gjk], 68% with Kachi Koli [gjk]. *Lg Use*: Used by all. Also use Sindhi [snd]. Also use Urdu [urd]. *Lg Dev*: No literates. *DLS*: Still. *Writing*: Unwritten. *Other*: Hindu. *Map*: 38.

**Jogi** [jog]. *Users*: 50,000 (1996 R. Hoyle). *Location*: Sindh province: Badin, Hala, Hyderabad, Jusab Jang, Karachi Habchopi, Khokhar Bughera, Makli, Matli, Mirpurkhas, Nabisar, Nagar Parkar, Sato Mel, Tando Adam, Tando Allahyar, Tando Jam, Tando Sain Dad, Taz Mori, Thatta, Umerkot. *Status*: 6a (Vigorous). *Class*: Indo-European, Indo-Iranian, Indo-Aryan, Intermediate Divisions, Western, Rajasthani, Marwari. *Dialects*: None known. Lexical similarity: 75%–83% with Goaria [gig], 69%–82% with Loarki [lrk], 70%–78% with Marwari (Southern) [mve]. *Lg Use*: All domains. Used by all. Most also use Dhatki [mki]. Most also use Marwari [mve]. Also use Gujarati [guj], particularly for religious purposes. Also use Hindi [hin], particularly for religious purposes. Also use Sindhi [snd], especially by women and children, but with very low proficiency, and by men in contact with outsiders. Also use Urdu [urd]. *DLS*: Still. *Writing*: Unwritten. *Other*: The Jogis may also identify themselves as Marwaris (came from Marwar area in Rajasthan India), or as Gujaratis.

**Kabutra** [kbu] (Nat, Natra). *Users*: 1,000 (1998). *Location*: Sindh province: Kunri, Nara Dhoro, and Umerkot areas. *Status*: 6b\* (Threatened). *Class*: Indo-European, Indo-Iranian, Indo-Aryan, Western Hindi, Hindustani, Sansi. *Dialects*: Reported inherent intelligibility with Sansi [ssi] and the Sochi dialect of Sansi, and use Kabutra when speaking to them. Lexical similarity: 74% with the Sochi [ssi] language variety. *Lg Use*: Also use Sindhi Bhil [sbn]. Also use Urdu [urd]. *Lg Dev*: Literacy rate in L2: 5% in Urdu [urd]. *DLS*: Still. *Writing*: Unwritten. *Other*: Speakers say 90% of the people remain in Zal area of Marwar, India. Hindu.

**Kacchi** [kfr] (Cuchi, Cutch, Kachchhi, Kachchi, Kachi, Katch, Katchi, Kautchy, Kutchchi, Kutchie). *Users*: 50,000 in Pakistan (1998). *Location*: Sindh province: notably in Karachi. *Status*: 6a\* (Vigorous). *Class*: Indo-European, Indo-Iranian, Indo-Aryan, Outer Languages, Northwestern, Sindhi. *Dialect*: Jadeji. *Lg Dev*: Radio. Grammar. NT: 2013. *Writing*: Devanagari script. Gujarati script. *Other*: Non-indigenous. *Worldwide*: Total users in all countries: 1,193,600 (as L1: 1,188,360; as L2: 5,240). Indigenous in: India. Also established in: Malawi, Tanzania. Unestablished in: Canada, Kenya, United Kingdom.

**Kalasha** [kls] (Calasa, Dardu, Kalasa, Kalash, Kalashamon, Kalashamond, Kalashamondr, Kalashi). Autonym: Kal'as'amon. *Users*: 5,000 (Heegård Petersen 2006). 3,200 in Northern Kalasha area; unknown and decreasing number in Southern Kalasha area. *Location*: Khyber Pakhtunkwa province: south Chitral district, Urtsun valley (southern Kalasha dialect); Birir, Bumboret, and Rumbur valleys (northern Kalasha dialect). *Status*: 6a\* (Vigorous). *Class*: Indo-European, Indo-Iranian, Indo-Aryan, Outer Languages, Northwestern, Dardic, Chitral. *Dialects*: Southern Kalasha (Urchuniwar, Urtsun, Urtsuniwar), Northern Kalasha (Birir, Bumboret, Rumbur). Very little contact between northern and southern dialects of Kalasha, so there are difficulties in communication now. Lexical similarity: 75% southern dialect with

northern dialects. *Type*: SOV. *Lg Use*: In the south, Kalasha is being supplanted by Khowar [khw] or Kati [bsh]. Home, in-group communication in the north. All also use Khowar [khw], in the south in the home, for in-group communication and elsewhere but with low proficiency; men in Birir do not speak it, but women there are learning the language. Many also use Urdu [urd], especially by women. Some also use Kati [bsh], especially in the south, in the home, and for in-group communication. Used as L2 by Kati [bsh]. *Lg Dev*: Literature. Dictionary. Grammar. Texts. *DLS*: Emerging (0.01). *Writing*: Arabic script, Naskh variant. Arabic script, Nastaliq variant. Latin script, used since 2000, primary usage. *Other*: Originally Kalasha was the language of most of the southern Chitral district. Now Khowar [khw] is the predominant language, with earlier languages just used in villages of the side valleys. Traditional religion, Muslim. *Map*: 38:8.

**Kalkoti** [xka]. *Users*: 6,600 (2018). *Location*: Khyber Pakhtunkwa province: Dir Kohistan, Kalkot village. *Status*: 7 (Shifting). *Class*: Indo-European, Indo-Iranian, Indo-Aryan, Outer Languages, Northwestern, Dardic, Shina. *Dialects*: None known. Lexical similarity: 69% with Gawri [gwc], 59% with Palula [phl], 60% with Savi [sdg]. Kalkoti, Palula and Savi form a cluster of closely related varieties within the Shina group. *Lg Use*: Adults only. Most shifting to Gawri [gwc] (Liljegren 2013). Most shifting to Northern Pashto [pbu] (Liljegren 2013). Many also use Urdu [urd], especially the educated and those who migrate to Punjab province each winter for employment. *DLS*: Still. *Writing*: Unwritten. *Other*: Muslim. *Map*: 38:31.

**Kamviri** [xvi] (Kamdeshi, Kamik, Lamertiviri, Shekhani). *Users*: 2,000 in Pakistan (2004). *Location*: Khyber Pakhtunkwa province: south Chitral district, Badrugal, Lamerot, Langorbat, and Urtsun valley. *Status*: 6a\* (Vigorous). *Class*: Indo-European, Indo-Iranian, Nuristani. *Dialects*: Kamviri, Shekhani. *Lg Use*: Most also use Khowar [khw]. Most also use Northern Pashto [pbu]. Some also use Urdu [urd]. *Lg Dev*: Dictionary. Grammar. Texts. *Writing*: Unwritten. *Map*: 38:12. *Worldwide*: Total users in all countries: 20,000. Also indigenous in: Afghanistan.

**Kashmiri** [kas] (Cashmeeree, Cashmiri, Kacmiri, Kaschemiri, Keshuri). *Users*: 361,000 in Pakistan (2017 census). *Location*: Azad Kashmir province: south of Shina. *Status*: 5\* (Dispersed). *Class*: Indo-European, Indo-Iranian, Indo-Aryan, Outer Languages, Northwestern, Dardic, Kashmiri. *Type*: SVO; gender (masculine/feminine); case-marking (5 cases); verb affixes mark person, number, object; ergativity; tense and aspect; 23 consonant and 8 vowel phonemes. *Lg Use*: Negative attitudes. *Lg Dev*: Literature. Newspapers. Radio. Videos. Dictionary. Grammar. Bible: 1899–2005. *Writing*: Arabic script, Naskh variant. Arabic script, Nastaliq variant, primary usage. Devanagari script. Latin script. Sharada script, no longer in use. *Map*: 38:19. *Worldwide*: Total users in all countries: 7,134,610 (as L1: 7,133,800; as L2: 810). Global EGIDS level: 2 (Provincial). Also indigenous in: India. Unestablished in: Canada, United States.

**Kati** [bsh] (Bashgali, Kata viri, Kativiri, Kât'a-vari, Nuristani, Shekhaniwar). *Users*: 7,800 in Pakistan (2018). *Location*: Khyber Pakhtunkwa province: Chitral district (eastern Kativiri dialect), Bumboret, Lutkuh, Rumbur, and Urtsun valleys. *Status*: 6a\* (Vigorous). *Class*: Indo-

European, Indo-Iranian, Nuristani. *Dialects*: Eastern Kativiri (Shekhani), Western Kativiri, Mumviri. Eastern Kativiri dialect is extremely endangered (2021 S. Zubair). *Type*: Agglutinative suffixes; CVC, CCVC, CV, CCCVC, CCVCC, CCCVCC. *Lg Use*: Most also use Khowar [khw]. Many also use Northern Pashto [pbu]. Many also use Urdu [urd], especially young people and educated. Some also use Kalasha [kls]. Used as L2 by Kalasha [kls]. *Lg Dev*: TV. Dictionary. Grammar. Texts. *Writing*: Arabic script, Naskh variant, limited usage, in development. Arabic script, Nastaliq variant, used in handwriting and for book titles. *Other*: Eastern Kativiri dialect often called Shekhani in Pakistan, but different from Kamviri [xvi] dialect also called Shekhani in Southern Chitral. *Map*: 38:1. *Worldwide*: Total users in all countries: 135,800. Global EGIDS level: 5 (Developing). Also indigenous in: Afghanistan.

**Khetrani** [xhe]. *Users*: 20,000 (2018). *Location*: Balochistan province: Barkhan district. *Status*: 6a\* (Vigorous). *Class*: Indo-European, Indo-Iranian, Indo-Aryan, Intermediate Divisions, Western, Panjabi, Western Panjabi. A member of macrolanguage Lahnda [lah]. *Dialect*: Jafri. Related to Saraiki [skr]. *Lg Use*: Also use Saraiki [skr]. *Lg Dev*: Literacy rate in L2: Below 5%. *DLS*: Still. *Writing*: Unwritten. *Other*: Influenced by Balochi. Muslim. *Map*: 38.

**Khowar** [khw] (Arniya, Chitrali, Chitrari, Citrali, Kashkari, Khawar, Patu, Qashqari). *Users*: 550,000 in Pakistan (Lunsford et al 2020). *Location*: Gilgit Baltistan province: Gilgit district, Ghizr valley, Shandur pass to Gupis; Khyber Pakhtunkwa province: Chitral and Peshawar districts; Ishkoman and Yasin valleys, north Swat valley, Ushu; probably in Rawalpindi and other northern cities. *Status*: 3 (Wider communication). Lingua franca in Chitral and adjacent areas of Gilgit and Swat districts since the 17th century. Also spoken in Peshawar and Rawalpindi. Used at home and in literature. *Class*: Indo-European, Indo-Iranian, Indo-Aryan, Outer Languages, Northwestern, Dardic, Chitral. *Dialects*: North Khowar, South Khowar, East Khowar, Swat Khowar. Northern dialect considered more pure. Related to Kalasha [kls] but different. Lexical similarity: 86%–98% among dialects. *Type*: SOV. *Lg Use*: The most important language of Chitral. Most also use Urdu [urd], especially among the educated, and in schools. Some also use Burushaski [bsk], especially in the Gilgit District. Some also use English [eng], especially among the educated. Some also use Gawri [gwc]. Some also use Northern Pashto [pbu]. Some also use Shina [scl], especially in the Gilgit District. Used as L2 by Burushaski [bsk], Dari [prs], Gawar-Bati [gwt], Kalasha [kls], Kamviri [xvi], Kati [bsh], Palula [phl], Wakhi [wbl], Yadgha [ydg]. *Lg Dev*: Literacy rate in L2: 15%–20% men, 1% women. Taught as subject in some primary schools. Newspapers. Radio. Dictionary. *DLS*: Ascending (0.23). *Writing*: Arabic script, Naskh variant. Arabic script, Nastaliq variant, primary usage. *Other*: Muslim. *Map*: 38:3. *Worldwide*: Total users in all countries: 578,100. Also established in: Afghanistan, India.

**Kohistani, Indus** [mvy] (Khili, Kohistani, Kohistē, Mair, Maiyon, Maiyā, Shuthun). *Users*: 200,000 (1992). *Location*: Khyber Pakhtunkwa province: Kohistan district, west bank Indus river. *Status*: 5\* (Developing). *Class*: Indo-European, Indo-Iranian, Indo-Aryan, Outer Languages, Northwestern, Dardic, Kohistani. *Dialects*: Indus (Jijal, Mani, Pattan, Seo), Duber-Kandia (Duber, Khili, Manzari), Ranolia, Bankad. A separate language from nearby varieties: Bateri [btv], Chilisso [clh]. Lexical similarity: 88%–92% between dialects, 69%–71% with

Chilisso [clh], 61%–63%% with Gowro [gwf], 58%–61% with Bateri [btv], 36%–41% with Kohistani Shina [plk], 26%–28% with Gawri [gwc] and Torwali [trw]. *Lg Use*: Many also use Northern Pashto [pbu]. Many also use Urdu [urd]. *Lg Dev*: Taught as subject in primary schools, as a 2-year MTB-MLE curriculum taught in 2 privately owned schools. *DLS*: Emerging (0.09). *Writing*: Arabic script, Naskh variant. Arabic script, Nastaliq variant, primary usage. *Other*: Mani and Manzari are not used for dialects, but are said to refer to brothers whose descendants settled in the 2 dialect areas. *Map*: 38:27.

**Koli, Kachi** [gjk] (Kachi, Kachi Gujarati, Katchi, Kohli, Kolhi, Koli, Kori, Kuchi, Vagari, Vagaria). *Users*: 130,000 in Pakistan (2018). 80,000–100,000 Kachi Koli, 5,000–6,000 Rabari, 10,000 Kachi Bhil, 50,000 Vagri, 10,000 Katai Meghwar, 1,000 Zalavaria Koli. *Location*: Sindh province: Nawabshah and Sakrand north, Matli south, and east beyond Mirpur Khas and Jamesabad, Tando Adam and Tando Allahyar town areas. *Status*: 5\* (Developing). *Class*: Indo-European, Indo-Iranian, Indo-Aryan, Intermediate Divisions, Western, Gujarati. *Dialects*: Kachi, Rabari (Rahabari), Kachi Bhil, Vagri (Kachi Meghwar), Katai Meghwar, Zalavaria Koli. Becoming more like Sindhi [snd]. *Lexical similarity*: Kachi dialect; 89% with Kachi and Rabari, 96% with Kachi Bhil, 86% with Vagri, 92% with Katai Meghwar, 88% with Zalavaria Koli, 78% with Gujarati [guj], 76% with Wadiyari Koli [kxp]. *Lg Dev*: Literacy rate in L2: Below 5%. Taught as subject in some primary and secondary schools. *Grammar*. NT: 2002. *DLS*: Emerging (0.02). *Writing*: Arabic script, Naskh variant. Gujarati script, used by older people. *Other*: People with basically the same language are socially quite distinct. Hindu. *Map*: 38. *Worldwide*: Total users in all countries: 530,000. Also established in: India.

**Koli, Parkari** [kvx] (Parkari). *Users*: 358,000 (2018). *Location*: Sindh province: Tharparkar district, Nagar Parkar in southeast tip bordering India; lower Thar desert, to Indus river west, bordered north and west by Hyderabad, to south and west of Badin. *Status*: 5\* (Developing). *Class*: Indo-European, Indo-Iranian, Indo-Aryan, Intermediate Divisions, Western, Gujarati. *Dialects*: None known. *Lexical similarity*: 77%–83% with Marwari Bhil [mve], 83% with Wadiyari Koli [kxp]. *Lg Use*: Also use Gujarati [guj]. Also use Sindhi [snd]. Also use Urdu [urd]. *Lg Dev*: Literacy rate in L2: Below 5%, mostly in Sindhi [snd], a few in Urdu [urd], very few in Gujarati [guj]. Taught as subject in some primary and secondary schools. NT: 1996. *DLS*: Emerging (0.04). *Writing*: Arabic script, Naskh variant. *Other*: Hindu. *Map*: 38.

**Koli, Wadiyari** [kxp] (Wadaria, Wadhara, Wadiyara, Wadiyara Koli, Wadiyari). *Users*: 179,000 in Pakistan (2018). *Location*: Sindh province: bounded by Hyderabad, Mirpur Khas, and Tando Allahyar north, Jamesabad and Matli south. *Status*: 5\* (Developing). *Class*: Indo-European, Indo-Iranian, Indo-Aryan, Intermediate Divisions, Western, Gujarati. *Dialects*: Mewasi (Mayvasi Koli), Wadiyara Koli, Nairya Koli, Tharadari Koli, Tharadari Bhil, Hasoria Koli, Hasoria Bhil, Rardro Bhil. *Type*: 38 consonants, 13 vowels and 7 diphthongs; stress on first syllable. *Lg Dev*: Literacy rate in L2: Below 5%. Taught as subject in some primary and secondary schools. NT: 2017. *Writing*: Arabic script, Naskh variant. Gujarati script. *Other*: Some strict caste rules about intermarriage and interdining are changing; possibly ‘lower’ groups wishing to move up, and barriers in closed castes breaking down. *Map*: 38. *Worldwide*: Total users in all countries: 583,000. Also indigenous in: India.

**Konkani, Goan** [gom]. *Users*: 67,400 in Pakistan (2018). *Status*: Unestablished. *Class*: Indo-European, Indo-Iranian, Indo-Aryan, Outer Languages, Southern, Konkani. *Lg Dev*: Grammar. Bible: 2006. *Writing*: Devanagari script, official usage. Kannada script. Latin script. *Other*: Non-indigenous. *Worldwide*: Total users in all countries: 3,725,300. Global EGIDS level: 5 (Developing). Indigenous in: India. Also established in: Kenya. Unestablished in: United Kingdom.

**Kundal Shahi** [shd] (Apeen Bol, “Rawri” pej.). *Users*: 700 (Rehman and Baart 2005). *Location*: Azad Kashmir province: Neelam district, Kundal Shahi village. *Status*: 8a (Moribund). *Class*: Indo-European, Indo-Iranian, Indo-Aryan, Outer Languages, Northwestern, Dardic, Shina. *Dialects*: None known. Lexical similarity: 50% with Shina [scl]. *Lg Use*: Home. Older adults only. Shifted to Northern Hindko [hno], especially among the younger generation. *DLS*: Still. *Writing*: Unwritten. *Other*: The language is spoken by the Qureshi ethnic group. *Map*: 38:18.

**Lahnda** [lah]. A macrolanguage. Population total all languages (L1 only): 103,497,280. *DLS*: . *Other*: Includes: Inku [jat] (Afghanistan), Khetrani [xhe], Northern Hindko [hno], Pahari-Potwari [phr], Saraiki [skr], Southern Hindko [hnd], Western Punjabi [pnb]. *Worldwide*: Total users in all countries: 103,497,280.

**Lasi** [lss] (Lassi). *Users*: 14,300 (2018). *Location*: Balochistan province: Kalat division, Lasbela district, north-northwest of Karachi. *Status*: 6a\* (Vigorous). *Class*: Indo-European, Indo-Iranian, Indo-Aryan, Outer Languages, Northwestern, Sindhi. *Lg Dev*: Literacy rate in L2: Below 5%. *DLS*: Still. *Writing*: Unwritten. *Other*: Influenced by Balochi. Muslim. *Map*: 38.

**Loarki** [lrk]. *Users*: 20,000 (1998). *Location*: Sindh province: rural. *Status*: 6a (Vigorous). *Class*: Indo-European, Indo-Iranian, Indo-Aryan, Intermediate Divisions, Western, Rajasthani, Marwari. *Dialects*: None known. Probably the same as Gade Lohar [gda] in Rajasthan, India, a Rajasthani language. Lexical similarity: 82% with Jogi [jog], 80% with Marwari [mve]. *Lg Use*: All domains. Used by all. Also use Sindhi [snd]. Also use Urdu [urd], especially educated individuals. *Lg Dev*: Literacy rate in L2: 25% boys, some older men, no girls or women in Sindhi [snd], some Urdu [urd]. *DLS*: Still. *Writing*: Unwritten. *Other*: Alternate people names are: Loar, Lohar, Gadlia, Gadolia Rajput, Gadolia Rajput Loar, Karia, Sisudia Rajput, Sisudia Loar. Hindu.

**Mankiyali** [nlm] (Tarawara, Tarawari, Trawari). *Users*: 500 (Anjum 2016). *Location*: Khyber Pakhtunkwa province: Mansehra district, Badi Shungli union council, Dana village. *Status*: 6b (Threatened). *Class*: Indo-European, Indo-Iranian, Indo-Aryan, Outer Languages, Northwestern, Dardic, Kohistani. *Dialects*: None known. Related to Bateri [btv]. Lexical similarity: 42% with Bateri [btv], 41% with Gowro [gwf], 39% with Gujari [gju], 36% with Northern Hindko [hno], 34% with Ushojo [ush] (Anjum 2016). *Type*: 30 consonants and 16 vowels; tonal. *Lg Use*: Home, community. Some of all ages. Most also use Northern Pashto [pbu] (Anjum 2016). Most also use Urdu [urd] (Anjum 2016). Some also use English [eng] (Anjum 2016). Also use Northern Hindko [hno], with many youth shifting. *DLS*: Still. *Writing*: Unwritten. *Map*: 38:22.

**Marwari** [mve] (Jaiselmer, Marawar, Merwari, Rajasthani). *Users*: 164,000 (2018). 78,300

Northern Marwari and 85,600 Southern Marwari. *Location*: Punjab province: Bahawalnagar, Bahawalpur, and Rahim Yar Khan districts; Sindh province: widespread Karachi to Sukkur. *Status*: 5\* (Developing). *Class*: Indo-European, Indo-Iranian, Indo-Aryan, Intermediate Divisions, Western, Rajasthani, Marwari. A member of macrolanguage Marwari [mwr] (India). *Dialects*: Northern Marwari, Southern Marwari, Marwari Bhil, Marwari Meghwar, Marwari Bhat. Northern and Southern Marwari mutually inherently intelligible. May or may not be different from Marwari of India [rwr]. Lexical similarity: 79%–83% with Dhatki [mki], 87% between Southern and Northern Marwari, 78% with Marwari Meghwar and Marwari Bhat dialects. *Lg Use*: One sweeper community of 10,000–100,000 identifies itself as Marwari, but is undergoing rapid shift to Urdu [urd]. Marwari is not usually written. Also use Hindi [hin]. Also use Saraiki [skr]. Also use Sindhi [snd], especially educated people. Also use Urdu [urd], particularly the educated. Used as L2 by Jogi [jog]. *Lg Dev*: Literacy rate in L2: Below 5% in Sindhi [snd] or Urdu [urd]. Newspapers. NT: 1821. *DLS*: Emerging (0.09). *Writing*: Arabic script, Naskh variant, used in Sindh Province. Arabic script, Nastaliq variant, used in Punjab Province. *Other*: ‘Rajasthani’ is a linguistic cover term for a group of languages. Speakers tend to be urban and educated. Northern Bhil tribes: Marwari-Thori, Gulguli, Shikari, Jogi, Sochi. Northern Marwari sub-dialects: Uganyo, Bhattipo, and Khadali; Southern Marwari sub-dialects: Utradi, Jaxorati, and Larecha. Hindu, Christian, Muslim. *Map*: 38.

**Memoni** [mby]. *Location*: Sindhi province: scattered; Karachi. *Status*: 7 (Shifting). *Class*: Indo-European, Indo-Iranian, Indo-Aryan, Unclassified. *Dialects*: None known. Reportedly similar to Sindhi [snd] and Gujarati [guj]. *Lg Use*: Adults only. Many shifting to Gujarati [guj]. Many shifting to Sindhi [snd]. Also use Urdu [urd]. *Lg Dev*: Most are highly educated. *DLS*: Emerging (0.01). *Writing*: Unwritten. *Other*: Reportedly 500–600 years ago Memoni speakers moved from a Sindhi-speaking area to a Gujarati-speaking area. Muslim.

**Oadki** [odk] (Oad, Od, Odh, Odk). *Users*: 76,100 in Pakistan (2018). Ethnic population: 250,000 (2017 A. Ranjha). *Location*: Sindh and in south Punjab provinces: widespread. *Status*: 6a\* (Vigorous). *Class*: Indo-European, Indo-Iranian, Indo-Aryan, Unclassified. *Dialects*: Lexical similarity: 86%–88% among dialects in Dadu, Shikarpur, and Pithoro, 70%–78% with Marwari [mve], Dhatki [mki] and Bagri [bgq]. *Lg Use*: Most also use Sindhi [snd]. Also use Urdu [urd]. *Writing*: Arabic script, Naskh variant. *Other*: Christian, Hindu, Muslim. *Map*: 38. *Worldwide*: Total users in all countries: 2,076,100. Also indigenous in: India.

**Ormuri** [oru] (Baraki, Bargista, Berki, Birki, Brakee, Braki, Burki, Ormar, Ormari, Ormui, Ormur, Urmur, Urmuri, Warmaro). *Users*: 5,000 in Pakistan (2018), decreasing. *Location*: Khyber Pakhtunkwa province: South Waziristan agency, Kaniguram. *Status*: 6b\* (Threatened). *Class*: Indo-European, Indo-Iranian, Iranian, Western, Northwestern, Ormuri-Parachi. *Dialect*: Kanigurami. Lexical similarity: 27% with Waneci [wne], 25%–33% with Pashto dialects. *Lg Use*: Also use Central Pashto [pst]. Also use Urdu [urd]. *Lg Dev*: Literature. Dictionary. Grammar. Texts. *DLS*: Emerging (0.02). *Writing*: Arabic script, Naskh variant. Arabic script, Nastaliq variant. *Other*: Conflict in the Waziristan area from 2003 to 2017 has caused the

displacement of Kaniguram's population to the settled districts of Pakistan, such as Tank, Dera Ismail Khan, Peshawar, and Karachi (Zeb 2020). *Map:* 38. *Worldwide:* Total users in all countries: 5,050. Also established in: Afghanistan.

**Pahari-Potwari** [phr] (Pahari, Pahari-Pothowari, Pothohari, Potohari, Potwari). *Users:* 2,500,000 in Pakistan (Lothers and Lothers 2007). *Location:* Azad Kashmir province: all but far north; Khyber Pakhtunkwa province: Abbottabad district; Punjab province: Gujarat, Jhelum, and Rawalpindi districts; Islamabad. *Status:* 6a\* (Vigorous). *Class:* Indo-European, Indo-Iranian, Indo-Aryan, Intermediate Divisions, Western, Panjabi, Western Panjabi. A member of macrolanguage Lahnda [lah]. *Dialects:* Pahari (Chibhali, Dhundi-Kairali), Pothwari (Potwari), Punchhi (Poonchi), Mirpuri, Gujar Khan. 'Pahari', hill language; Potwari is the language of the Pothwar Plateau. A chain of related varieties with Punjabi [pnb], Hindko [hno], [hnd], and Saraiki [skr], also called Greater Punjabi. Degree of similarity to Western Pahari varieties in India unknown. Lexical similarity: 76%–84% among varieties called, Pahari, Potwari, and some called Hindko in Mansehra, Muzaffarabad, and Mirpuri in Jammu. *Lg Dev:* Radio. Bible portions: 2021. *DLS:* Emerging (0.11). *Writing:* Arabic script, Naskh variant. Arabic script, Nastaliq variant, primary usage. *Other:* Muslim. *Maps:* 38:17, 38. *Worldwide:* Total users in all countries: 3,542,800. Also established in: India. Unestablished in: United Kingdom.

**Pakistan Sign Language** [pks] (IPSL, Indo-Pakistani Sign Language, Isharon Ki Zubann, PSL). *Users:* 1,080,000 (2021 DBS/DOOR/SIL). Estimated 650,000–1,300,000 deaf signers, assuming 0.3%–0.6% of total population. *Location:* Scattered. *Status:* 5 (Developing). *Class:* Sign language, Deaf community sign language. *Dialects:* None known. Some regional variation in vocabulary. Related to other sign languages in south Asia; see comments on Indian Sign Language [ins] in India. *Lg Use:* Used in urban centers. The National Institute of Special Education encourages a total communication approach, including the teaching of PSL. Used by all. *Lg Dev:* Dictionary. *DLS:* Still.

**Palula** [phl] (Biyori, Dangarikwar, Palola, Phalulo, Phalura). *Users:* 14,400 (2018). Population of Ashret and Biori Valleys is almost completely monolingual (Liljegren 2008). *Location:* Khyber Pakhtunkwa province: Chitral district, Ashret and Biori, 12 villages on lower east Chitral river; some in main valley, Kalkatak, and Shishi Koh valley, Purigal; some in Dir Kohistan. Ashret valley (Ashreti dialect); Biori valley, Kalkatak, and Purigal (northern Palula dialect). *Status:* 5 (Developing). *Class:* Indo-European, Indo-Iranian, Indo-Aryan, Outer Languages, Northwestern, Dardic, Shina. *Dialects:* Ashreti, Northern Palula. No, or limited, intelligibility of Kalkoti [xka] and Savi [sdg]. Lexical similarity: 92% with Ashreti and Northern Palula dialects, 56%–58% with Savi [sdg] in Afghanistan, 38%–42% with Kohistani Shina [plk]. Palula, Kalkoti [xka] (spoken in Dir Kohistan) and Savi [sdg] (spoken in Afghanistan) form a cluster of closely related varieties within the Shina group (Liljegren 2008). *Lg Use:* Vigorous within Ashret and Biori valleys. Reluctant to use Palula when speakers of other languages are present. Home, community. Used by all. Positive attitudes. Most also use Khowar [khw]. Many also use Northern Pashto [pbu]. Many also use Urdu [urd]. *Lg Dev:* Literature. Dictionary. *DLS:* Emerging (0.09). *Writing:* Arabic script, Naskh

variant, in development. Arabic script, Nastaliq variant, primary usage. *Other*: Muslim. *Map*: 38:11.

**Pashto, Central** [pst] (Mahsudi). *Users*: 8,490,000 (2017 census). *Location*: Balochistan province: north; Khyber Pakhtunkwa province: Bannu and Karak districts; Waziristan agencies and Lakki Marwat and Tank regions; Punjab province: some border areas in Bhakkar district. *Status*: 6a\* (Vigorous). *Class*: Indo-European, Indo-Iranian, Iranian, Eastern, Southeastern, Pashto. A member of macrolanguage Pushto [pus]. *Dialects*: Waciri (Waziri), Bannuchi (Bannochi, Bannu). Lexical comparison and interviews indicate this is distinct from Northern Pashto [pbu] and Southern Pashto [pbt]. *Type*: SOV; noun head final; gender (masculine/feminine); no articles; case-marking (3 cases); verb affixes mark person, number, gender of subject; passives; tense and aspect; causatives. *Lg Use*: Also use Saraiki [skr]. Used as L2 by Ormuri [oru], Savi [sdg]. *Lg Dev*: Dictionary. Grammar. *DLS*: Emerging (0.01). *Writing*: Arabic script, Naskh variant. *Other*: Muslim. *Map*: 38.

**Pashto, Northern** [pbu] (Pakhto, Pashtu, Pushto, Yousafzai Pashto, Yusufzai Pashto). *Users*: 24,300,000 in Pakistan (2017 census). Ethnic population: Possibly 49,600,000 Pashto in all countries. *Location*: Khyber Pakhtunkwa province: Peshawar district and Yusufzai area; Punjab province: Mianwali district; all along Afghanistan border. *Status*: 5\* (Developing). *Class*: Indo-European, Indo-Iranian, Iranian, Eastern, Southeastern, Pashto. A member of macrolanguage Pushto [pus]. *Dialects*: Ningraharian Pashto, Northeastern Pashto, Eastern Afghan Pashto. Much similarity with Northwestern Pashto in Afghanistan. Subdialects of Northeastern Pashto are Kohat (Khatak), Yusufzai (Peshawar), Afridi, Shinwari, Mohmand, Shilmani. Lexical similarity: 80% between Northeastern and Southwestern Pashto. *Type*: SOV; noun head final; gender (masculine/feminine); no articles; case-marking (3 cases); verb affixes mark person, number, gender of subject; passives; tense and aspect; causatives. *Lg Use*: Rich literary tradition. The Powinda are a nomadic Pashto-speaking group. Used as L2 by Dameli [dml], Dari [prs], Gawar-Bati [gwt], Gawri [gwc], Indus Kohistani [mvy], Kalkoti [xka], Kamviri [xvi], Kati [bsh], Khowar [khw], Mankiyali [nlm], Palula [phl], Sarikoli [srh], Southern Hindko [hnd], Torwali [trw], Ushojo [ush]. *Lg Dev*: Literacy rate in L2: Low. Taught as subject in all primary schools. Literature. Newspapers. Periodicals. Radio. TV. Videos. Dictionary. Grammar. Texts. Bible: 2019. *DLS*: Emerging (0.04). *Writing*: Arabic script, Naskh variant, primary usage. Arabic script, Nastaliq variant. *Other*: Muslim. *Maps*: 38:15, 38. *Worldwide*: Total users in all countries: 30,251,740 (as L1: 28,883,240; as L2: 1,368,500). Global EGIDS level: 3 (Wider communication). Also established in: Afghanistan, India, United Arab Emirates. Unestablished in: Australia, Canada, New Zealand, Russian Federation, Saudi Arabia, Turkey, Turkmenistan, United States.

**Pashto, Southern** [pbt] (Pashtu, Pushto, Pushtu, Quetta-Kandahari Pashto). *Users*: 5,960,000 in Pakistan (2017 census). *Location*: Balochistan province: Loralai, Mastung, Quetta, Pishin, Sibi, and Ziarat districts, and adjacent areas; Khyber Pakhtunkwa province: Dera Ismail Khan district; Punjab province: Dera Ghazi Khan district. *Status*: 5\* (Dispersed). *Class*: Indo-European, Indo-Iranian, Iranian, Eastern, Southeastern, Pashto. *Dialects*: Southeastern Pashto, Quetta Pashto. *Type*: SOV; noun head final; gender (masculine/feminine); no articles; case-

marking (3 cases); verb affixes mark person, number, gender of subject; passives; tense and aspect; causatives. *Lg Use*: Some Pashto educated in Urdu [urd] medium schools mix the languages. Used as L2 by Waneci [wne]. *Lg Dev*: Literature. Newspapers. Periodicals. Radio. TV. Videos. Dictionary. Grammar. Texts. Bible portions: 2011–2019. *Writing*: Arabic script, Naskh variant, used in print. Arabic script, Nastaliq variant, used in handwriting and for book titles. *Other*: Muslim. *Map*: 38. *Worldwide*: Total users in all countries: 19,871,430 (as L1: 16,391,430; as L2: 3,480,000). Global EGIDS level: 1 (National). Also indigenous in: Afghanistan, Iran, Tajikistan. Unestablished in: Belgium, Finland, Germany, Sweden, Turkey, Turkmenistan, United Arab Emirates, United Kingdom.

**Persian, Iranian** [pes]. *Users*: 185,000 in Pakistan (2018). *Status*: Unestablished. *Class*: Indo-European, Indo-Iranian, Iranian, Western, Southwestern, Persian. *Type*: SOV; noun head initial; no articles; tense and aspect; causatives; 23 consonant and 6 vowel phonemes; stress on final syllable (or root). *Lg Dev*: Fully developed. Bible: 1845–1995. *Writing*: Arabic script, Naskh variant. Arabic script, Nastaliq variant, used in Iran. *Other*: Non-indigenous. *Worldwide*: Total users in all countries: 78,623,350 (as L1: 57,192,350; as L2: 21,431,000). Global EGIDS level: 1 (National). Indigenous in: Iran. Also established in: Bahrain, Iraq, Oman, Qatar, Tajikistan, United Arab Emirates. Unestablished in: Australia, Austria, Azerbaijan, Belgium, Canada, Denmark, Finland, France, Germany, India, Japan, Kuwait, Netherlands, New Zealand, Norway, Russian Federation, Saudi Arabia, Sweden, Syria, Turkey, Turkmenistan, United Kingdom, United States, Uzbekistan, Yemen.

**Punjabi, Eastern** [pan] (Eastern Panjabi, Punjabi). *Users*: 15,000,000 in Pakistan (2017 census). *Location*: Punjab province: Bahawalnagar, Faisalabad, Toba Tek Singh, and Vehari districts. *Status*: 5 (Dispersed). *Class*: Indo-European, Indo-Iranian, Indo-Aryan, Intermediate Divisions, Western, Panjabi. *Dialects*: Doabi, Malwai (Malwa). A continuum of related varieties between Eastern Punjabi in India and Western Punjabi [pnb] in Pakistan. Lexical similarity: 70%–85% with Western Punjabi [pnb]. *Type*: SOV; postpositions; gender (masculine/feminine); no articles; case-marking (7 cases); verb affixes mark person, number, gender of subject; passives; tense and aspect; 15 consonant and 24 vowel phonemes; tonal (3 tones: high, mid, low). *Lg Use*: Educated younger generations living in cities opt to use Urdu [urd] and English [eng], and parents also encourage them to use Urdu or English even at home. Home, community, religious settings. Used by all. *Lg Dev*: Literature. Radio. Grammar. Bible: 1959–2017. *Writing*: Arabic script, Naskh variant. Gurmukhi script, primary usage. Khojki script. *Worldwide*: Total users in all countries: 52,077,070 (as L1: 48,299,070; as L2: 3,778,000). Global EGIDS level: 2 (Provincial). Also indigenous in: India. Also established in: Fiji, Kenya, Mauritius, Singapore. Unestablished in: Australia, Bangladesh, Canada, Iran, Japan, Malaysia, Nepal, New Zealand, Oman, Réunion, Saudi Arabia, Thailand, United Arab Emirates, United Kingdom, United States.

**Punjabi, Western** [pnb] (Jangli, Lahanda, Lahnda, Lahndi, Panjabi, Panjabi Proper, Punjabi, Punjapi, Shahmukhi). *Users*: 65,000,000 in Pakistan (2017 census). *Location*: Punjab province: Chakwal, Gujranwala, Gujrat, Hafizabad, Jhang, Jhelum, Kasur, Khushab, Lahore, Mandi Bahauddin, Nankana, Narowal, Okara, Pakpattan, Sahiwal, Sargodha, Shekhupura, and

Sialkot districts. *Status*: 5 (Developing). *Class*: Indo-European, Indo-Iranian, Indo-Aryan, Intermediate Divisions, Western, Panjabi, Western Panjabi. A member of macrolanguage Lahnda [lah]. *Dialects*: Punjabi Proper (Central Punjabi, Lahori, Majhi, Standard Punjabi, Thēṭh Punjabi), Jhelum (Dhanni, Dhanni Boli), Khushabi (Shahpuri), Lamochari (Jatki), Jangli (Jangli Boli, Jhangi). A continuum of related varieties between Eastern Punjabi [pan] in India and Western Punjabi, and ‘Lahnda’. Lahnda (originally called Western Panjabi by Grierson) is a label for the dialect continuum between Hindko [hno] [hnd], Pahari-Potwari [phr], and Saraiki [skr]. *Lexical similarity*: 70%–85% with Eastern Punjabi [pan]. *Type*: SOV; postpositions; gender (masculine/feminine); no articles; case-marking (7 cases); verb affixes mark person, number, gender of subject; passives; tense and aspect; 15 consonant and 24 vowel phonemes; tonal (3 tones: high, mid, low). *Lg Use*: Educated younger generations living in cities opt to use Urdu [urd] and English [eng], and parents also encourage them to use Urdu or English even at home. Home, community, religious settings. Used by all. Positive attitudes. Also use Saraiki [skr]. Used as L2 by Aer [aeq], Northern Hindko [hno], Sansi [ssi], Southern Hindko [hnd]. *Lg Dev*: Literature. Newspapers. Periodicals. Radio. TV. Videos. Grammar. NT: 1819–1931. *DLS*: Ascending (0.18). *Writing*: Arabic script, Naskh variant. Arabic script, Nastaliq variant, primary usage, also called Shahmukhi. Khojki script. Lahnda (Landa) script, no longer in use. Latin script. *Other*: Muslim, Christian. *Map*: 38. *Worldwide*: Total users in all countries: 66,715,480. Also indigenous in: India. Unestablished in: Afghanistan, Australia, Belgium, Finland, Germany, Libya, Oman, Saudi Arabia, Spain, Sweden, United Kingdom, United States.

**Pushto** [pus]. A macrolanguage. Population total all languages (L1 only): 53,764,670. *DLS*: . *Other*: Includes: Central Pashto [pst], Northern Pashto [pbu], Southern Pashto [pbt] (Afghanistan). *Worldwide*: Total users in all countries: 53,764,670.

**Rohingya** [rhg]. Autonym: Ruwainggya. *Users*: 350,000 in Pakistan (2017 The Arakan Project), based on nationality. *Status*: Unestablished. *Class*: Indo-European, Indo-Iranian, Indo-Aryan, Outer Languages, Eastern, Bengali-Assamese. *Writing*: Arabic script, Naskh variant. Hanifi Rohingya script, some development in immigrant communities for all three scripts. Latin script. *Other*: Non-indigenous. *Worldwide*: Total users in all countries: 2,529,270. Global EGIDS level: 6a (Vigorous). Indigenous in: Bangladesh, Myanmar. Unestablished in: Australia, China, India, Indonesia, Malaysia, Saudi Arabia, Thailand, United Arab Emirates.

**Sansi** [ssi] (Bhilki). *Users*: 20,000 in Pakistan (2018). *Location*: Sindh province: Karachi. *Status*: 7 (Shifting). *Class*: Indo-European, Indo-Iranian, Indo-Aryan, Western Hindi, Hindustani, Sansi. *Dialect*: Sochi. *Lg Use*: Some shifting to Sindhi [snd]. Some shifting to Urdu [urd]. Also use Saraiki [skr]. Also use Western Punjabi [pnb]. *Lg Dev*: Literacy rate in L2: Below 5%. *Writing*: Unwritten. *Other*: Non-indigenous. Bhils by caste. Immigrated from India in 1947. Hindu, Muslim. *Map*: 38. *Worldwide*: Total users in all countries: 80,000. Indigenous in: India.

**Saraiki** [skr] (Belochki, Seraiki, Siraiki). *Users*: 25,900,000 in Pakistan (2017 census). *Location*: Balochistan province: Barkhan, Jaffarabad, Jhal Magsi, and Nasirabad districts; Khyber

Pakhtunkwa province: Dera Ismail Khan and Tank districts; Punjab province: Bahawalpur, Bhakkar, Dera Ghazi Khan, Layyah, Lodhran, Mianwali, Multan, Muzaffargarh, Rahim Yar Khan, Rajanpur, and Taunsa districts; Sindh province: Ghotki, Jacobabad, Kashmore, Larkana, Qambar Shahdadt, Shikarpur and Sukkur districts. *Status*: 5 (Developing). *Class*: Indo-European, Indo-Iranian, Indo-Aryan, Intermediate Divisions, Western, Panjabi, Western Panjabi. A member of macrolanguage Lahnda [lah]. *Dialects*: Sindhi Saraiki (Sindh aali Saraiki), Central Saraiki, Eastern Saraiki, Northern Saraiki, Southern Saraiki. Central Saraiki includes the following sub-dialects: Bahawalpuri-Riasati (Bahawalpuri, Riasati, Riyasati), Derawali (Deri), Mianwali (Mianwali, Awankari, Thali, Pind Dadan Khan), and Multani (Jatki). Dialects blend together into Punjabi east and Sindhi [snd] south. 80% intelligibility of Dogri [dgo]. Lexical similarity: 85% with Sindhi [snd]; 68% with Dhatki [mki], Od [odk], and Sansi [ssi]. *Lg Use*: Used by all. Positive attitudes. Also use Urdu [urd]. Used as L2 by Aer [aeq], Central Pashto [pst], Eastern Balochi [bgp], Khetrani [xhe], Marwari [mve], Northern Hindko [hno], Sansi [ssi], Sindhi [snd], Southern Hindko [hnd], Western Punjabi [pnb]. *Lg Dev*: Literacy rate in L2: 5%–15%. Radio. TV. Grammar. Bible portions: 1898. *DLS*: Ascending (0.29). *Writing*: Arabic script, Naskh variant. Arabic script, Nastaliq variant, primary usage. Devanagari script, no longer in use. Gurmukhi script, no longer in use. Khojki script. *Other*: Saraiki is taught at the university level in at least 2 university programs. Muslim, Hindu. *Map*: 38. *Worldwide*: Total users in all countries: 26,219,000. Also indigenous in: India. Unestablished in: Saudi Arabia.

**Sarikoli** [srh] (Sariquli). *Users*: 70 in Pakistan (Torwali 2021). *Location*: Khyber Pakhtunkwa province: Chitral district, bordering the Wakhan corridor. *Status*: 8b (Nearly extinct). *Class*: Indo-European, Indo-Iranian, Iranian, Eastern, Southeastern, Pamir, Shugni-Yazgulami. *Type*: SOV. *Lg Use*: Elderly only. Shifted to Northern Pashto [pbu]. *Lg Dev*: Dictionary. Grammar. *Worldwide*: Total users in all countries: 16,070. Global EGIDS level: 6b (Threatened). Also indigenous in: China.

**Savi** [sdg] (Sau, Sauji, Sawi). *Users*: 4,000 in Pakistan (2021 Forum of Language Initiatives). Ethnic population: 4,000 (2021 Forum of Language Initiatives). *Location*: Khyber Pakhtunkwa province: Kunar valley, Dir district, many in refugee camps near Timargarha; Chitral, near Drosh; a few in Jalalabad. *Status*: 6a (Vigorous). *Class*: Indo-European, Indo-Iranian, Indo-Aryan, Outer Languages, Northwestern, Dardic, Shina. *Lg Use*: Used by all. Also use Central Pashto [pst]. *Lg Dev*: Literacy rate in L2: 5%–15%. *Writing*: Unwritten. *Other*: Non-indigenous. Muslim. *Worldwide*: Total users in all countries: 9,000. Indigenous in: Afghanistan.

**Shina** [scl] (Brokpa, Shinaki, Sina). *Users*: 688,000 in Pakistan (2018), increasing. *Location*: Azad Kashmir province: east Neelum district; Gilgit Baltistan province: Baltistan, Diamer, and Gilgit districts, Chilas area, Darel, Gilgit, Haramosh, lower Hunza Valley, Punial, and Tangir valleys, Astor, Kharmang, Kachura, Satpara, and other small valleys, scattered villages in Ishkoman and Yasin valleys; Khyber Pakhtunkwa province: east Kohistan district, Harban and Sazin. *Status*: 6a (Vigorous). *Class*: Indo-European, Indo-Iranian, Indo-Aryan, Outer Languages, Northwestern, Dardic, Shina. *Dialects*: Gilgiti (Bagrote, Bunji, Gilgit, Haramosh,

Hunza-Nagar, Punial, Rondu), Astori (Astor, Dras, Gurezi, Kharmangi, Satpara), Chilasi Kohistani (Chilas, Darel, Harban, Sazin, Tangir). Gilgit functions as the language standard. Shina is the primary language in Gilgit and Diamer districts. Lexical similarity: 79%–99% within Gilgiti (Northern) dialect subgroup, 81%–96% with Astori (Eastern) subgroup, 84%–98% with Chilas (Diamer) subgroup. *Lg Use*: Vigorous. All domains. Used by all. Positive attitudes. Also use Urdu [urd]. Used as L2 by Balti [bft], Brokskat [bkk], Domaaki [dmk], Khowar [khw]. *Lg Dev*: Literature. Grammar. Bible portions: 1929. *DLS*: Ascending (0.23). *Writing*: Arabic script, Naskh variant. Arabic script, Nastaliq variant, primary usage. *Other*: Muslim. *Map*: 38:16. *Worldwide*: Total users in all countries: 720,200. Also indigenous in: India.

**Shina, Kohistani** [plk] (Kohistani, Kohisty, Palasi-Kohistani). *Users*: 458,000 (2018), increasing. *Location*: Khyber Pakhtunkwa province: Kohistan district, east bank Indus river, Jalkot, Kolai, and Palas valley areas. *Status*: 6a (Vigorous). *Class*: Indo-European, Indo-Iranian, Indo-Aryan, Outer Languages, Northwestern, Dardic, Shina. *Dialects*: Palasi (Palas), Jalkoti (Jalkot), Kolai (Koli). A somewhat divergent variety of Shina linguistically and socially. Reportedly similar to Shina [scl] of Chilas, but more distant from Gilgit [scl] dialect. *Lg Use*: Vigorous. All domains. Used by all. Positive attitudes. Used as L2 by Bateri [btv], Chilisso [clh], Gowro [gwf]. *Lg Dev*: Literature. *DLS*: Emerging (0.02). *Writing*: Arabic script, Nastaliq variant, in development. *Other*: Muslim. *Map*: 38:26.

**Sindhi** [snd]. *Users*: 31,000,000 in Pakistan (2017 census). Ethnic population: 26,000,000 (2014 World Factbook). *Location*: Balochistan province: Khuzdar and Lasbela districts; Sindh province: widespread, Indus river lower reaches; Hyderabad, Karachi. *Status*: 3 (Wider communication). *Class*: Indo-European, Indo-Iranian, Indo-Aryan, Outer Languages, Northwestern, Sindhi. *Dialects*: Lari, Lasi, Thareli, Vicholo (Central Sindhi, Viccholi, Vicholi), Macharia, Dukslinu (Hindu Sindhi), Sindhi Musalmani (Muslim Sindhi), Shikari Bhil, Katiawari Kachi. Some southern Bhil groups speak dialects of Sindhi. 100,000 in rural Sindh originally from Kathiawar Peninsula in India are Muslims, exhibit widespread bilingualism in Sindh, and are almost completely assimilated with the Sindhi people. *Type*: SOV; noun head final; gender (masculine/feminine); case-marking (8 cases); verb affixes mark person, number, gender of subject; passives; tense and aspect; 24 consonant and 15 vowel phonemes. *Lg Use*: Also use Saraiki [skr], in northern Sind. Used as L2 by Aer [aeq], Bagri [bgq], Dhatki [mki], Ghera [ghr], Goaria [gig], Gurgula [ggg], Jandavra [jnd], Jogi [jog], Loarki [lrk], Marwari [mve], Memoni [mby], Oadki [odk], Parkari Koli [kvx], Sansi [ssi], Sindhi Bhil [sbn], Vaghri [vgr]. *Lg Dev*: Taught as subject in most primary schools. Literature. Radio. Dictionary. Grammar. Bible: 1954. *DLS*: Vital (0.62). *Writing*: Arabic script, Naskh variant, primary usage. Devanagari script, used in India. Gurmukhi script, used in India. Khojki script. *Other*: Shikari (hunter) Bhils are a nomadic group of 2,000 to 3,000 who live in south Sindh Province, centered around Badin, and have adopted the Sindhi language. Muslim, Hindu. *Map*: 38. *Worldwide*: Total users in all countries: 33,214,680 (as L1: 33,211,620; as L2: 3,060). Also indigenous in: India. Also established in: Philippines, Singapore. Unestablished in: Afghanistan, Australia, Belize, Canada, Kenya, Malaysia, Nepal, Oman,

Saudi Arabia, United Arab Emirates, United States.

**Sindhi Bhil** [sbn] (Meghwar Bhil). *Users*: 56,500 (2000). *Location*: Sindh province: Badin-Matli-Thatta, Ghorabari west, and Mohrano. Badin-Matli to Tando Allahyar scattered (Sindhi Meghwar dialect). *Status*: 6a\* (Vigorous). *Class*: Indo-European, Indo-Iranian, Indo-Aryan, Outer Languages, Northwestern, Sindhi. *Dialects*: Sindhi Bhil, Mohrano, Badin, Sindhi Meghwar. Badin dialect is reportedly similar to Sindhi [snd]. Lexical similarity: 82% between the Mohrani dialect and Sindhi; 89% between Sindhi Bhil [sbn] and Sindhi Meghwar. *Lg Use*: Positive attitudes. Also use Dhatki [mki]. Also use Sindhi [snd]. Used as L2 by Kabutra [kbu]. *DLS*: Still. *Writing*: Unwritten. *Other*: Sindhi or Dhatki orthographies are acceptable. Hindu, Muslim. *Map*: 38.

**Tamil** [tam]. *Users*: 2,000 in Pakistan (2020 BBC). *Location*: Sindh province: Karachi, Korangi, Madrasi Para, and Tri Road. *Status*: 6b (Threatened). *Class*: Dravidian, Southern, Tamil-Kannada, Tamil-Kodagu, Tamil-Malayalam, Tamil. *Type*: SOV; postpositions; gender (rational, non-rational); no articles; case-marking (8 cases); verb affixes mark person, number, gender of subject; passives (affective, effective); tense; no comparatives; 18 consonants, 10 vowels and 2 diphthongs; non-tonal; stress on first syllable; inclusive/exclusive pronouns. *Lg Use*: Some young people, all adults. Most also use Urdu [urd], outside the Tamil community. *Lg Dev*: Fully developed. Bible: 1727–2002. *Writing*: Arabic script, Naskh variant, no longer in use. Braille script. Tamil script, primary usage. *Other*: Non-indigenous. Hindu. *Worldwide*: Total users in all countries: 86,640,030 (as L1: 78,587,030; as L2: 8,053,000). Global EGIDS level: 1 (National). Indigenous in: India, Sri Lanka. Also established in: Fiji, Malaysia, Martinique, Mauritius, Réunion, Singapore, South Africa. Unestablished in: Australia, Bahrain, Belize, Canada, Denmark, Finland, France, Germany, Guadeloupe, Ireland, Myanmar, Netherlands, New Zealand, Oman, Qatar, Saudi Arabia, Thailand, United Arab Emirates, United Kingdom, United States.

**Torwali** [trw] (Kohistani, Torwalak, Torwalik, Turvali). *Users*: 130,000 (Lunsford et al 2020), including an additional 10,000 more living and working abroad. *Location*: Khyber Pakhtunkwa province: Swat district; upper Swat district, Band, Batiband, Beshigram, Chail, Dabago, Kena, Puran Chail, and Shanku villages. Both sides of Swat river, north of Madyan up to Asret (Bahrain dialect); 2 villages in Chail valley (Chail dialect). *Status*: 6b (Threatened). *Class*: Indo-European, Indo-Iranian, Indo-Aryan, Outer Languages, Northwestern, Dardic, Kohistani. *Dialects*: Bahrain, Chail. Lexical similarity: 44% with Kalkoti [xka] and Gawri [gwc], 89% with Bahrain and Chail dialects. *Lg Use*: Nearly half the speakers have migrated to the largest urban areas of Pakistan, where their language is being replaced by Urdu [urd] or Pashto [pbu] (2020 Z. Torwali). Home, community. Some of all ages. Positive attitudes. Most also use Northern Pashto [pbu]. Most also use Urdu [urd]. Used as L2 by Badeshi [bdz], Ushojo [ush]. *Lg Dev*: A bilingual literacy program in Torwali and Urdu [urd] for 2,000 adult women in the community was begun in 2013 with the support of USAID (Torwali 2018). Taught as subject in primary schools in grades 1 and 2, as a 2-year multilingual education program that bridges children from Torwali to Urdu [urd] and also to English [eng] in 3 different locations. Literature. Videos. Dictionary. Grammar. Agency: Idara

Baraye Taleem-o-Taraqi (Institute for Education and Development) (IBT). *DLS*: Emerging (0.09). *Writing*: Arabic script, Naskh variant. Arabic script, Nastaliq variant, primary usage. *Other*: Muslim. *Map*: 38:29.

**Turkish** [tur]. Autonym: Türkçe. *Users*: 6,000 in Pakistan (2018). *Status*: Unestablished. *Class*: Turkic, Southern, Turkish. *Type*: SOV; postpositions; noun head final; indefinite articles; case-marking (6 cases); verb affixes mark person, number; passives; tense; causatives; comparatives; 19 consonant and 8 vowel phonemes; non-tonal; stress on final syllable; vowel harmony; evidentiality. *Lg Dev*: Fully developed. *Bible*: 1827–2006. *Writing*: Arabic script, Naskh variant, no longer in use. Braille script. Cyrillic script, used in Bulgaria. Greek script, no longer in use. Latin script, used since 1928 or 1929, primary usage. *Other*: Non-indigenous. *Worldwide*: Total users in all countries: 90,028,000 (as L1: 84,010,500; as L2: 6,017,500). *Global EGIDS level*: 1 (National). *Indigenous in*: Bulgaria, Cyprus, Greece, Turkey. Also established in: Germany, Jordan, Kazakhstan, Lebanon, North Macedonia, Romania, Serbia, Syria, Uzbekistan. Unestablished in: Albania, Australia, Austria, Azerbaijan, Belgium, Bosnia and Herzegovina, Brazil, Canada, Croatia, Denmark, Egypt, Finland, France, Georgia, Iran, Iraq, Israel, Italy, Japan, Kuwait, Kyrgyzstan, Libya, Morocco, Netherlands, New Zealand, Norway, Poland, Russian Federation, Saudi Arabia, Spain, Sweden, Switzerland, Tajikistan, Turkmenistan, Ukraine, United Arab Emirates, United Kingdom, United States.

**Turkmen** [tuk]. *Users*: 10,900 in Pakistan (2016). *Location*: Several refugee camps near Quetta, and in cities. *Status*: Unestablished. *Class*: Turkic, Southern, Turkmenian. *Type*: SOV; postpositions; no articles; case-marking (5 cases); verb affixes mark person, number; passives; tense; 23 consonant and 9 vowel phonemes; non-tonal; vowel harmony; evidentials. *Lg Dev*: Literature. Periodicals. Radio. TV. Dictionary. Grammar. Texts. *Bible*: 2017. *Writing*: Arabic script, Naskh variant, used in Afghanistan and Iran. Cyrillic script, used in Turkmenistan, not used in Afghanistan. Latin script, official usage in Turkmenistan since 1991. *Other*: Non-indigenous. Muslim. *Worldwide*: Total users in all countries: 6,562,260. *Global EGIDS level*: 1 (National). *Indigenous in*: Afghanistan, Iran, Turkmenistan. Also established in: Iraq, Russian Federation, Turkey. Unestablished in: Germany, Kazakhstan, Kyrgyzstan, Tajikistan, Ukraine, Uzbekistan.

**Urdu** [urd] (Bihari, Modern Standard Urdu). *Users*: 164,000,000 in Pakistan, all users. L1 users: 15,000,000 in Pakistan (2018 census). L2 users: 149,000,000 (2018). *Location*: Widespread. *Status*: 1 (National). Statutory national language (1973, Constitution, Article 251(1)). *Class*: Indo-European, Indo-Iranian, Indo-Aryan, Western Hindi, Hindustani. *Dialects*: Intelligible with Hindi [hin]. Derived from Sanskrit into the Prakrit languages with lexical elements borrowed from Arabic and Persian (2021 Maldonado Garcia). Dakhini dialect of Urdu [urd] in India has fewer Persian and Arabic loans than Urdu. Rekhta is a form of Urdu used in poetry. *Type*: SOV; postposition; noun head final; gender (masculine/feminine); no articles; direct and oblique cases; verb affixes mark person, number, gender of subject; passives; tense and aspect; causatives; 35 consonants, 21 vowels; non-tonal; stress on penultimate syllable. *Lg Use*: All domains. Used by all. *Lg Dev*: Taught in all primary and secondary schools. Taught in some tertiary schools. Fully developed. *Bible*: 1843–1998. *DLS*: Vital (0.79). *Writing*: Arabic script,

Naskh variant. Arabic script, Nastaliq variant, primary usage. Braille script. Devanagari script, used in India (Ahmad 2011). *Other*: Muslim. *Map*: 38. *Worldwide*: Total users in all countries: 231,717,940 (as L1: 70,555,140; as L2: 161,162,800). Also indigenous in: India. Also established in: Bangladesh (Bihari), Fiji, Guyana, Mauritius, Nepal, South Africa.

Unestablished in: Afghanistan, Australia, Bahrain, Belgium, Canada, Denmark, Egypt, Finland, Germany, Iran, Iraq, Ireland, Malaysia, New Zealand, Norway, Oman, Qatar, Saudi Arabia, Singapore, Spain, Sweden, Turkey, United Arab Emirates, United Kingdom, United States.

**Ushojo** [ush] (Ushuji). *Users*: 3,000 (2018). *Location*: Khyber Pakhtunkwa province: Swat district, upper Bishigram valley, east of Madyan, 12 villages. *Status*: 6b (Threatened). *Class*: Indo-European, Indo-Iranian, Indo-Aryan, Outer Languages, Northwestern, Dardic, Shina. *Dialects*: None known. Lexical similarity: 50% with Kolai Shina [plk], 48% with Palas Shina [plk], 42% with Gilgiti Shina [scl], 35% with Chail Torwali [trw], 34% with Mankiyali [nlm], 31% with Palula [phl], 27% with Bateri [btv], 23% with Gawri [gwc], 22% with Kalkoti [xka]. *Type*: SOV. *Lg Use*: Some young people, all adults. Most also use Northern Pashto [pbu], with many school-going children shifting, particularly in the homeland. Most also use Torwali [trw], with some children shifting, particularly in the homeland. Many also use Urdu [urd], with many children shifting, particularly in large urban centers. *DLS*: Emerging (0.01). *Writing*: Unwritten. *Other*: Not known by linguists until 1989. Reportedly came from Kolai, Indus Kohistan several hundred years ago via Ushu, Swat, hence the name Ushojo. Muslim. *Map*: 38:28.

**Uyghur** [uig]. *Users*: 10,000 in Pakistan (2018). A few families permanently settled in Pakistan. *Status*: Unestablished. *Class*: Turkic, Eastern. *Type*: SOV; postpositions; genitives, adjectives, numerals, relatives before noun heads; question words initial; word order distinguishes subjects and indirect objects, topic and comment; 8 noun cases shown by suffixes; verb suffixes mark subject person, number, second person marks plural and 3 levels of respect; passive, reflexive, reciprocal and causative; comparatives; 25 consonant and 15 vowel phonemes; CV, CVC, CVCC syllables; non-tonal; stress on final syllable; vowel harmony; evidentials. *Lg Dev*: Newspapers. Radio. TV. Grammar. Bible: 1950–2022. *Writing*: Arabic script, Naskh variant, official and primary usage in China, also used in Afghanistan. Cyrillic script, used in Kazakhstan, past usage in China. Latin script, used in China and Turkey. *Other*: Non-indigenous. Muslim. *Worldwide*: Total users in all countries: 10,510,072 (as L1: 10,509,952; as L2: 120). Global EGIDS level: 2 (Provincial). Indigenous in: China, Kazakhstan, Mongolia. Also established in: Afghanistan, India, Turkey. Unestablished in: Australia, Canada, Kyrgyzstan, Russian Federation, Saudi Arabia, Turkmenistan, United States, Uzbekistan.

**Uzbek, Southern** [uzs]. *Users*: 267,000 in Pakistan (2022 Joshua Project). *Status*: Unestablished. *Class*: Turkic, Eastern. *Type*: SOV; postpositions; noun head final; content q-word final; one prefix in words borrowed from Dari [prs], many suffixes (agglutinative); verbal affixation marks of person and number for subject and object; verb tense and aspect marked by suffixes; nontonal; no vowel harmony (unlike some other, closely-related Turkic languages). *Lg Dev*:

Literature. Newspapers. Periodicals. TV. Videos. Dictionary. Grammar. Texts. Bible portions: 2004–2006. *Writing*: Arabic script, Naskh variant, used in print. Arabic script, Nastaliq variant, used in handwriting and for book titles. *Other*: Non-indigenous. Refugees from Afghanistan. Muslim. *Worldwide*: Total users in all countries: 3,955,900 (as L1: 3,415,900; as L2: 540,000). Global EGIDS level: 2 (Provincial). Indigenous in: Afghanistan. Also established in: Turkey. Unestablished in: Azerbaijan.

**Vaghri** [vgr] (Bavri, Salavta, Vaghri Koli). *Users*: 4,800 (2018). *Location*: Sindh province: Badin, Digri, Hala, Jang Sai, Karachi, Matli, Mirpur Khas, Nawabshah, Noakot, Sakrand, Sanghar, Sukkur, Tando Adam, Tando Allahyar, Tando Ghulam Ali, and Tando Mohammed Khan. *Status*: 6a\* (Vigorous). *Class*: Indo-European, Indo-Iranian, Indo-Aryan, Intermediate Divisions, Western, Gujarati. *Dialects*: None known. Reportedly related to Kukar people's language who live near Chanesar Halt, Mehmoodabad in Karachi. Lexical similarity: 78% with Wadiyari Koli [kxp]. *Lg Use*: Also use Gujarati [guj]. Also use Sindhi [snd]. Also use Urdu [urd]. *Lg Dev*: Literacy rate in L2: Below 5%. *DLS*: Still. *Writing*: Unwritten. *Other*: Urbanized. Hindu. *Map*: 38.

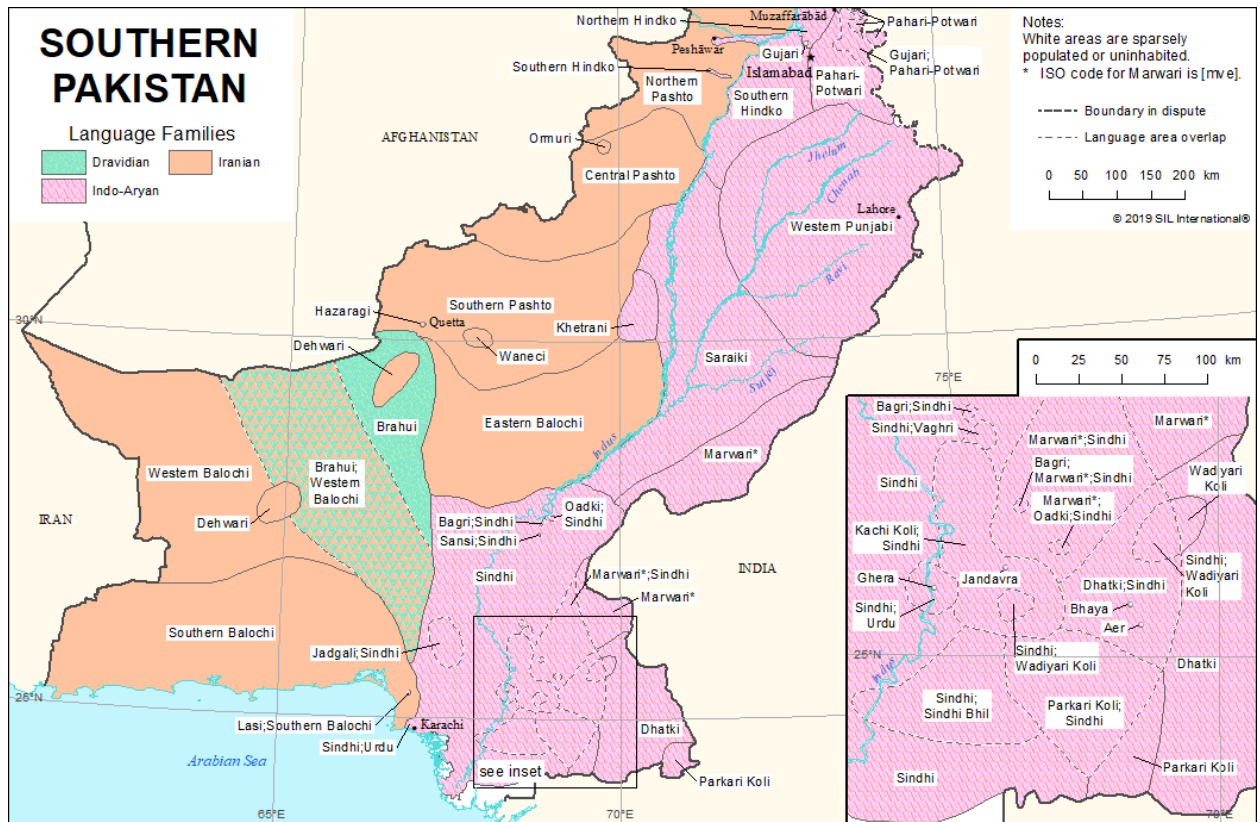
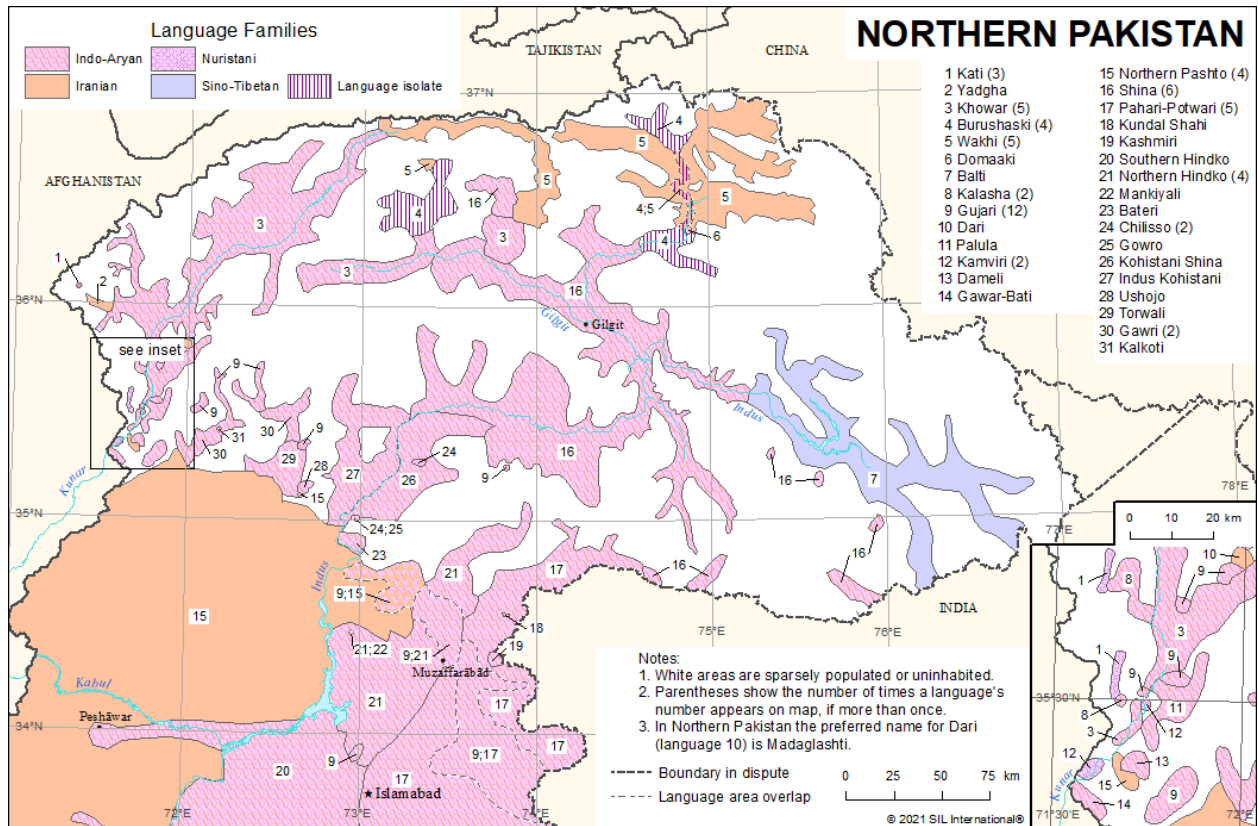
**Wakhi** [wbl] (Khik, Khikwar, Vakhan, Wakhani, Wakhigi, Ǟik zik, Ǟikwor, Xhikwor). *Users*: 14,200 in Pakistan (2018), increasing. *Location*: Gilgit Baltistan province: Ghizer, Gilgit, and Hunza-Najar districts; Khyber Pakhtunkwa province: northernmost Chitral district, Baroghil, in glacier area; Chupursan, upper Ishkoman, Shimshal, and upper Yarkhun valleys; upper Hunza valley from Gulmit to Chinese and Afghanistan borders (Gojal dialect). *Status*: 6a (Vigorous). *Class*: Indo-European, Indo-Iranian, Iranian, Eastern, Southeastern, Pamir. *Dialects*: Gojal, Ishkoman, Yasin, Yarkhun. Lexical similarity: 84% with Ishkoman and Gojal dialects, 89% with Yasin and Gojal, 91% with Ishkoman and Yasin. *Type*: SOV. *Lg Use*: Home, villages. Used by all. Positive attitudes. Most also use Urdu [urd], especially men and young people; less than half the women and few older people in remote areas speak it. Some also use Burushaski [bsk], especially older people and those who live in villages in Gojal. Some also use Khowar [khw]. *Lg Dev*: Literacy rate in L2: Quite high in Gojal dialect. Literacy is primarily in Urdu [urd] and English [eng]. Some are now using an English-Roman based alphabet to write, especially on social network websites. Radio. Dictionary. Grammar. Texts. Bible portions: 2001. *Writing*: Arabic script, Naskh variant, used in Afghanistan. Arabic script, Nastaliq variant, used in handwriting and for book titles. Cyrillic script, used in Tajikistan. Latin script, used in Pakistan, preferred script, not firmly established. *Other*: Muslim. *Map*: 38:5. *Worldwide*: Total users in all countries: 52,200. Global EGIDS level: 5 (Developing). Also indigenous in: Afghanistan, Tajikistan. Also established in: China.

**Waneci** [wne] (Chalgari, Tarino, Vanechi, Wanechi, Wanetsi). *Users*: 141,000 (2018). *Location*: Balochistan province: northeast in Harnai area. *Status*: 6a\* (Vigorous). *Class*: Indo-European, Indo-Iranian, Iranian, Eastern, Southeastern, Pashto. *Dialects*: None known. Lexical similarity: 71%–75% with Southern Pashto [pbt], 63%–72% with other Pashto varieties, 27% with Ormuri [oru]. *Lg Use*: Also use Southern Pashto [pbt]. *Lg Dev*: Literacy rate in L2: Below 5%. *DLS*: Emerging (0.02). *Writing*: Unwritten. *Other*: Muslim. *Map*: 38.

**Yadgha** [ydg] (Lotkohiwar, Munji-war, Yidga, Yidgha, Yudga, Yudgha). *Users*: 6,000 (Lunsford et al 2020). *Location*: Khyber Pakhtunkwa province: Chitral district, upper Lotkoh valley, west of Garam Chashma. *Status*: 6b (Threatened). *Class*: Indo-European, Indo-Iranian, Iranian, Eastern, Southeastern, Pamir. *Dialects*: No significant dialect variation. Lexical similarity: 56%–80% with Munji [mnj] in Afghanistan. *Lg Use*: Home. Some of all ages. Positive attitudes. All also use Khowar [khw], some shifting. Most also use Urdu [urd], especially the educated. *DLS*: Emerging (0.01). *Writing*: Arabic script, Nastaliq variant. *Other*: Muslim. *Map*: 38:2.

## **Language Maps**

Northern Pakistan	38
Southern Pakistan	38



## Languages by Population

In this section the languages of Pakistan are listed in order of their population of first-language speakers within the country, from highest to lowest. The entries report just the population and status elements.

### 10,000,000 to 99,999,999

**Punjabi, Western** [pnb] *Users:* 65,000,000 in Pakistan (2017 census). *Status:* 5 (Developing).  
*Worldwide:* Total users in all countries: 66,715,480.

**Sindhi** [snd] *Users:* 31,000,000 in Pakistan (2017 census). Ethnic population: 26,000,000 (2014 World Factbook). *Status:* 3 (Wider communication). *Worldwide:* Total users in all countries: 33,214,680 (as L1: 33,211,620; as L2: 3,060).

**Saraiki** [skr] *Users:* 25,900,000 in Pakistan (2017 census). *Status:* 5 (Developing). *Worldwide:* Total users in all countries: 26,219,000.

**Pashto, Northern** [pbu] *Users:* 24,300,000 in Pakistan (2017 census). Ethnic population: Possibly 49,600,000 Pashto in all countries. *Status:* 5\* (Developing). *Worldwide:* Total users in all countries: 30,251,740 (as L1: 28,883,240; as L2: 1,368,500).

**Punjabi, Eastern** [pan] *Users:* 15,000,000 in Pakistan (2017 census). *Status:* 5 (Dispersed).  
*Worldwide:* Total users in all countries: 52,077,070 (as L1: 48,299,070; as L2: 3,778,000).

**Urdu** [urd] *Users:* 15,000,000 in Pakistan (2018 census). 164,000,000 in Pakistan, all users. L2 users: 149,000,000 (2018). *Status:* 1 (National). Statutory national language (1973, Constitution, Article 251(1)). *Worldwide:* Total users in all countries: 231,717,940 (as L1: 70,555,140; as L2: 161,162,800).

### 1,000,000 to 9,999,999

**Pashto, Central** [pst] *Users:* 8,490,000 (2017 census). *Status:* 6a\* (Vigorous).

**Pashto, Southern** [pbt] *Users:* 5,960,000 in Pakistan (2017 census). *Status:* 5\* (Dispersed).  
*Worldwide:* Total users in all countries: 19,871,430 (as L1: 16,391,430; as L2: 3,480,000).

**Hindko, Northern** [hno] *Users:* 5,250,000 (2020 census), increasing. Total Hindko speakers: 7,000,000 (Lunsford et al 2020). *Status:* 5 (Developing).

**Balochi, Eastern** [bgp] *Users:* 2,930,000 in Pakistan (2017 census). *Status:* 5\* (Developing).  
*Worldwide:* Total users in all countries: 2,930,800.

**Brahui** [brh] *Users:* 2,640,000 in Pakistan (2017 census). *Status:* 5\* (Developing). *Worldwide:* Total users in all countries: 2,865,000.

**Pahari-Potwari** [phr] *Users:* 2,500,000 in Pakistan (Lothers and Lothers 2007). *Status:* 6a\*

(Vigorous). *Worldwide*: Total users in all countries: 3,542,800.

**Balochi, Southern** [bcc] *Users*: 2,450,000 in Pakistan (2017 census). *Status*: 5\* (Developing).

*Worldwide*: Total users in all countries: 3,570,700.

**Hindko, Southern** [hnd] *Users*: 1,750,000 (2020). Total Hindko speakers: 7,000,000 (Lunsford et al 2020). *Status*: 5\* (Developing).

**Pakistan Sign Language** [pks] *Users*: 1,080,000 (2021 DBS/DOOR/SIL). Estimated 650,000–1,300,000 deaf signers, assuming 0.3%–0.6% of total population. *Status*: 5 (Developing).

**Balochi, Western** [bgn] *Users*: 1,050,000 in Pakistan (2017 census). *Status*: 5\* (Developing).

*Worldwide*: Total users in all countries: 2,283,350.

### 100,000 to 999,999

**Dari** [prs] *Users*: 921,000 in Pakistan (2022 Joshua Project), based on ethnicity, including 909,000 ethnic Tajiks who speak Dari. *Status*: 5\* (Dispersed). *Worldwide*: Total users in all countries: 30,291,510 (as L1: 10,277,510; as L2: 20,014,000).

**Shina** [scl] *Users*: 688,000 in Pakistan (2018), increasing. *Status*: 6a (Vigorous). *Worldwide*: Total users in all countries: 720,200.

**Khowar** [khw] *Users*: 550,000 in Pakistan (Lunsford et al 2020). *Status*: 3 (Wider communication). *Worldwide*: Total users in all countries: 578,100.

**Shina, Kohistani** [plk] *Users*: 458,000 (2018), increasing. *Status*: 6a (Vigorous).

**Balti** [bft] *Users*: 425,000 in Pakistan (2018). *Status*: 5\* (Developing). *Worldwide*: Total users in all countries: 438,800.

**Gujari** [gju] *Users*: 391,000 in Pakistan (2018). *Status*: 5\* (Developing). *Worldwide*: Total users in all countries: 1,696,000.

**Kashmiri** [kas] *Users*: 361,000 in Pakistan (2017 census). *Status*: 5\* (Dispersed). *Worldwide*: Total users in all countries: 7,134,610 (as L1: 7,133,800; as L2: 810).

**Koli, Parkari** [kvx] *Users*: 358,000 (2018). *Status*: 5\* (Developing).

**Rohingya** [rhg] *Users*: 350,000 in Pakistan (2017 The Arakan Project), based on nationality. *Status*: Unestablished. *Worldwide*: Total users in all countries: 2,529,270.

**Bengali** [ben] *Users*: 326,000 in Pakistan (2018). *Status*: Unestablished. *Worldwide*: Total users in all countries: 272,828,760 (as L1: 233,808,880; as L2: 39,019,880).

**Bagri** [bgq] *Users*: 306,000 in Pakistan (2018). *Status*: 6a\* (Vigorous). *Worldwide*: Total users in all countries: 2,196,000.

**Uzbek, Southern** [uzs] *Users*: 267,000 in Pakistan (2022 Joshua Project). *Status*: Unestablished. *Worldwide*: Total users in all countries: 3,955,900 (as L1: 3,415,900; as L2: 540,000).

**Kohistani, Indus** [mvy] *Users:* 200,000 (1992). *Status:* 5\* (Developing).

**Dhatki** [mki] *Users:* 190,000 in Pakistan (2018). *Status:* 5\* (Developing). *Worldwide:* Total users in all countries: 206,400.

**Persian, Iranian** [pes] *Users:* 185,000 in Pakistan (2018). *Status:* Unestablished. *Worldwide:* Total users in all countries: 78,623,350 (as L1: 57,192,350; as L2: 21,431,000).

**Koli, Wadiyari** [kxp] *Users:* 179,000 in Pakistan (2018). *Status:* 5\* (Developing). *Worldwide:* Total users in all countries: 583,000.

**Marwari** [mve] *Users:* 164,000 (2018). 78,300 Northern Marwari and 85,600 Southern Marwari. *Status:* 5\* (Developing).

**Waneci** [wne] *Users:* 141,000 (2018). *Status:* 6a\* (Vigorous).

**Koli, Kachi** [gjk] *Users:* 130,000 in Pakistan (2018). 80,000–100,000 Kachi Koli, 5,000–6,000 Rabari, 10,000 Kachi Bhil, 50,000 Vagri, 10,000 Katai Meghwar, 1,000 Zalavaria Koli. *Status:* 5\* (Developing). *Worldwide:* Total users in all countries: 530,000.

**Torwali** [trw] *Users:* 130,000 (Lunsford et al 2020), including an additional 10,000 more living and working abroad. *Status:* 6b (Threatened).

**Burushaski** [bsk] *Users:* 126,000 in Pakistan (2018), increasing. *Status:* 6a\* (Vigorous). *Worldwide:* Total users in all countries: 126,300.

**Gawri** [gwc] *Users:* 100,000 (Lunsford et al 2020). *Status:* 6b (Threatened).

## 10,000 to 99,999

**Hazaragi** [haz] *Users:* 97,600 in Pakistan (2018). *Status:* 6a\* (Vigorous). *Worldwide:* Total users in all countries: 3,660,000.

**Oadki** [odk] *Users:* 76,100 in Pakistan (2018). Ethnic population: 250,000 (2017 A. Ranjha). *Status:* 6a\* (Vigorous). *Worldwide:* Total users in all countries: 2,076,100.

**Konkani, Goan** [gom] *Users:* 67,400 in Pakistan (2018). *Status:* Unestablished. *Worldwide:* Total users in all countries: 3,725,300.

**Sindhi Bhil** [sbn] *Users:* 56,500 (2000). *Status:* 6a\* (Vigorous).

**Jogi** [jog] *Users:* 50,000 (1996 R. Hoyle). *Status:* 6a (Vigorous).

**Kacchi** [kfr] *Users:* 50,000 in Pakistan (1998). *Status:* 6a\* (Vigorous). *Worldwide:* Total users in all countries: 1,193,600 (as L1: 1,188,360; as L2: 5,240).

**Bateri** [btv] *Users:* 39,000 in Pakistan (2018). *Status:* 6a\* (Vigorous). *Worldwide:* Total users in all countries: 39,800.

**Gurgula** [ggg] *Users:* 35,300 (2000). *Status:* 6a\* (Vigorous).

**Goaria** [gig] *Users:* 25,400 (2000). *Status:* 6a (Vigorous).

**Khetrani** [[xhe](#)] *Users:* 20,000 (2018). *Status:* 6a\* (Vigorous).

**Loarki** [[lrk](#)] *Users:* 20,000 (1998). *Status:* 6a (Vigorous).

**Sansi** [[ssi](#)] *Users:* 20,000 in Pakistan (2018). *Status:* 7 (Shifting). *Worldwide:* Total users in all countries: 80,000.

**Dehwari** [[deh](#)] *Users:* 19,000 (2018). *Status:* 6a\* (Vigorous).

**English** [[eng](#)] *Users:* 16,300 in Pakistan (2018). 104,016,300 in Pakistan, all users. L2 users: 104,000,000 (Ramaswami et al 2012). *Status:* 1 (National). Statutory national language (1973, Constitution, Article 251(2)). *Worldwide:* Total users in all countries: 1,456,448,320 (as L1: 379,682,200; as L2: 1076,766,120).

**Jadgali** [[jdg](#)] *Users:* 15,600 in Pakistan (2004 J. Leclerc). *Status:* 6a\* (Vigorous). *Worldwide:* Total users in all countries: 25,600.

**Palula** [[phl](#)] *Users:* 14,400 (2018). Population of Ashret and Biori Valleys is almost completely monolingual (Liljegren 2008). *Status:* 5 (Developing).

**Lasi** [[lss](#)] *Users:* 14,300 (2018). *Status:* 6a\* (Vigorous).

**Wakhi** [[wbl](#)] *Users:* 14,200 in Pakistan (2018), increasing. *Status:* 6a (Vigorous). *Worldwide:* Total users in all countries: 52,200.

**Turkmen** [[tuk](#)] *Users:* 10,900 in Pakistan (2016). *Status:* Unestablished. *Worldwide:* Total users in all countries: 6,562,260.

**Chinese, Mandarin** [[cmn](#)] *Users:* 10,000 in Pakistan (2018). *Status:* Unestablished. *Worldwide:* Total users in all countries: 1,138,222,350 (as L1: 939,237,350; as L2: 198,985,000).

**Ghera** [[ghr](#)] *Users:* 10,000 (1998). *Status:* 6a\* (Vigorous).

**Uyghur** [[uig](#)] *Users:* 10,000 in Pakistan (2018). A few families permanently settled in Pakistan. *Status:* Unestablished. *Worldwide:* Total users in all countries: 10,510,072 (as L1: 10,509,952; as L2: 120).

## 1,000 to 9,999

**Kati** [[bsh](#)] *Users:* 7,800 in Pakistan (2018). *Status:* 6a\* (Vigorous). *Worldwide:* Total users in all countries: 135,800.

**Kalkoti** [[xka](#)] *Users:* 6,600 (2018). *Status:* 7 (Shifting).

**Turkish** [[tur](#)] *Users:* 6,000 in Pakistan (2018). *Status:* Unestablished. *Worldwide:* Total users in all countries: 90,028,000 (as L1: 84,010,500; as L2: 6,017,500).

**Yadgha** [[ydg](#)] *Users:* 6,000 (Lunsford et al 2020). *Status:* 6b (Threatened).

**Dameli** [[dml](#)] *Users:* 5,000 (Perder 2013), increasing. *Status:* 6a (Vigorous).

**Jandavra** [[jnd](#)] *Users:* 5,000 (1998). *Status:* 6a (Vigorous).

**Kalasha** [kls] *Users:* 5,000 (Heegård Petersen 2006). 3,200 in Northern Kalasha area; unknown and decreasing number in Southern Kalasha area. *Status:* 6a\* (Vigorous).

**Ormuri** [oru] *Users:* 5,000 in Pakistan (2018), decreasing. *Status:* 6b\* (Threatened). *Worldwide:* Total users in all countries: 5,050.

**Vaghri** [vgr] *Users:* 4,800 (2018). *Status:* 6a\* (Vigorous).

**Gawar-Bati** [gwt] *Users:* 4,000 in Pakistan (2021). *Status:* 6a\* (Vigorous). *Worldwide:* Total users in all countries: 36,000.

**Savi** [sdg] *Users:* 4,000 in Pakistan (2021 Forum of Language Initiatives). Ethnic population: 4,000 (2021 Forum of Language Initiatives). *Status:* 6a (Vigorous). *Worldwide:* Total users in all countries: 9,000.

**Ushojo** [ush] *Users:* 3,000 (2018). *Status:* 6b (Threatened).

**Kamviri** [xvi] *Users:* 2,000 in Pakistan (2004). *Status:* 6a\* (Vigorous). *Worldwide:* Total users in all countries: 20,000.

**Tamil** [tam] *Users:* 2,000 in Pakistan (2020 BBC). *Status:* 6b (Threatened). *Worldwide:* Total users in all countries: 86,640,030 (as L1: 78,587,030; as L2: 8,053,000).

**Chilisso** [clh] *Users:* 1,000 (1992 SIL). Ethnic population: 1,600. *Status:* 6b\* (Threatened).

**Gowro** [gwf] *Users:* 1,000 (2003 J. Baart), decreasing. *Status:* 6b (Threatened).

**Kabutra** [kbu] *Users:* 1,000 (1998). *Status:* 6b\* (Threatened).

## 100 to 999

**Kundal Shahi** [shd] *Users:* 700 (Rehman and Baart 2005). *Status:* 8a (Moribund).

**Mankiyali** [nlm] *Users:* 500 (Anjum 2016). *Status:* 6b (Threatened).

**Brokskat** [bkk] *Users:* 400 in Pakistan (2022). *Status:* 6b\* (Threatened). *Worldwide:* Total users in all countries: 10,400.

**Domaaki** [dmk] *Users:* 340 (Matthias 2011), decreasing. Concentrated mostly in one village (Van Driem 2007). *Status:* 8b (Nearly extinct).

**Aer** [aeq] *Users:* 100 (1998). Women monolingual. Ethnic population: 330 Aer in Deh area. *Status:* 6b (Threatened).

## 10 to 99

**Bhaya** [bhe] *Users:* 70 (1998). *Status:* 6b (Threatened).

**Sarikoli** [srh] *Users:* 70 in Pakistan (Torwali 2021). *Status:* 8b (Nearly extinct). *Worldwide:* Total users in all countries: 16,070.

## 0

**Badeshi** [[bdz](#)] *Users*: No known L1 speakers. Last speakers survived into the 2000s. Ethnic population: 2,830 (2000). *Status*: 9 (Dormant).

## Unknown

**Gujarati** [[guj](#)] *Status*: 5\* (Dispersed). *Worldwide*: Total users in all countries: 62,116,220 (as L1: 57,076,220; as L2: 5,040,000).

**Memoni** [[mby](#)] *Status*: 7 (Shifting).

## Languages by Status

In this section the languages of Pakistan are listed in order of their status within the country as represented by their level on the EGIDs scale (Lewis and Simons 2010). The language entries are reduced to just the information elements that are relevant to assessing the EGIDS level: population, status, language use, language development, and writing.

### 1 (National)

**English** [eng] *Users:* 104,016,300 in Pakistan, all users. L1 users: 16,300 in Pakistan (2018). L2 users: 104,000,000 (Ramaswami et al 2012). *Status:* Statutory national language (1973, Constitution, Article 251(2)). *Writing:* Braille script. Deseret Alphabet, developed in 1854 with limited usage until 1877. Duployan shorthand. Latin script, primary usage. Shavian (Shaw) script, no longer in use. *Worldwide:* Total users in all countries: 1,456,448,320 (as L1: 379,682,200; as L2: 1076,766,120).

**Urdu** [urd] *Users:* 164,000,000 in Pakistan, all users. L1 users: 15,000,000 in Pakistan (2018 census). L2 users: 149,000,000 (2018). *Status:* Statutory national language (1973, Constitution, Article 251(1)). *Lg Use:* All domains. Used by all. *Lg Dev:* Fully developed. Bible: 1843–1998. *Writing:* Arabic script, Naskh variant. Arabic script, Nastaliq variant, primary usage. Braille script. Devanagari script, used in India (Ahmad 2011). *Worldwide:* Total users in all countries: 231,717,940 (as L1: 70,555,140; as L2: 161,162,800).

### 3 (Wider communication)

**Khowar** [khw] *Users:* 550,000 in Pakistan (Lunsford et al 2020). *Status:* Lingua franca in Chitral and adjacent areas of Gilgit and Swat districts since the 17th century. Also spoken in Peshawar and Rawalpindi. Used at home and in literature. *Lg Use:* The most important language of Chitral. Most also use Urdu [urd], especially among the educated, and in schools. Some also use Burushaski [bsk], especially in the Gilgit District. Some also use English [eng], especially among the educated. Some also use Gawri [gwc]. Some also use Northern Pashto [pbu]. Some also use Shina [scl], especially in the Gilgit District. Used as L2 by Burushaski [bsk], Dari [prs], Gawar-Bati [gwt], Kalasha [kls], Kamviri [xvi], Kati [bsh], Palula [phl], Wakhi [wbl], Yadgha [ydg]. *Lg Dev:* Newspapers. Radio. Dictionary. *Writing:* Arabic script, Naskh variant. Arabic script, Nastaliq variant, primary usage. *Worldwide:* Total users in all countries: 578,100.

**Sindhi** [snd] *Users:* 31,000,000 in Pakistan (2017 census). Ethnic population: 26,000,000 (2014 World Factbook). *Lg Use:* Also use Saraiki [skr], in northern Sind. Used as L2 by Aer [aeq], Bagri [bgq], Dhatki [mki], Ghera [ghr], Goaria [gig], Gurgula [ggg], Jandavra [jnd], Jogi [jog], Loarki [lrk], Marwari [mve], Memoni [mby], Oadki [odk], Parkari Koli [kvx], Sansi [ssi], Sindhi Bhil [sbn], Vaghri [vgr]. *Lg Dev:* Literature. Radio. Dictionary. Grammar. Bible: 1954. *Writing:* Arabic script, Naskh variant, primary usage. Devanagari script, used in India.

Gurmukhi script, used in India. Khojki script. *Worldwide*: Total users in all countries: 33,214,680 (as L1: 33,211,620; as L2: 3,060).

## 5 (Developing)

**Balochi, Eastern** [b<sup>g</sup>p] *Users*: 2,930,000 in Pakistan (2017 census). *Lg Use*: Also use Saraiki [skr]. *Lg Dev*: Radio. Grammar. NT: 2013. *Writing*: Arabic script, Naskh variant. Arabic script, Nastaliq variant, primary usage. *Worldwide*: Total users in all countries: 2,930,800.

**Balochi, Southern** [b<sup>c</sup>c] *Users*: 2,450,000 in Pakistan (2017 census). *Lg Dev*: Radio. Dictionary. Grammar. Texts. NT: 1999. *Writing*: Arabic script, Naskh variant. Arabic script, Nastaliq variant, primary usage. Latin script. *Worldwide*: Total users in all countries: 3,570,700.

**Balochi, Western** [b<sup>g</sup>n] *Users*: 1,050,000 in Pakistan (2017 census). *Lg Use*: Used as L2 by Brahui [brh]. *Lg Dev*: Newspapers. Radio. Dictionary. Grammar. Texts. Bible portions: 1984–2005. *Writing*: Arabic script, Naskh variant. Arabic script, Nastaliq variant, primary usage. Cyrillic script, used in Turkmenistan. *Worldwide*: Total users in all countries: 2,283,350.

**Balti** [b<sup>f</sup>t] *Users*: 425,000 in Pakistan (2018). *Lg Use*: Also use Shina [scl]. Also use Urdu [urd]. *Lg Dev*: Dictionary. Texts. Bible portions: 1903–1940. *Writing*: Arabic script, Naskh variant, used since the 17th century. Arabic script, Nastaliq variant, used since the 17th century, primary usage. Balti script, no longer in use. Tibetan script, used between 8th and 17th century, recent efforts to revive usage. *Worldwide*: Total users in all countries: 438,800.

**Brahui** [brh] *Users*: 2,640,000 in Pakistan (2017 census). *Lg Use*: Also use Western Balochi [b<sup>g</sup>n]. *Lg Dev*: Newspapers. Dictionary. Grammar. Texts. NT: 1998. *Writing*: Arabic script, Naskh variant. Arabic script, Nastaliq variant, primary usage. Latin script, used in one newspaper. *Worldwide*: Total users in all countries: 2,865,000.

**Dhatki** [m<sup>k</sup>i] *Users*: 190,000 in Pakistan (2018). *Lg Use*: Also use Sindhi [s<sup>n</sup>d]. Also use Urdu [urd]. Used as L2 by Jogi [j<sup>j</sup>og], Sindhi Bhil [s<sup>b</sup>n]. *Lg Dev*: Radio. Bible portions: 1999. *Writing*: Arabic script, Naskh variant. *Worldwide*: Total users in all countries: 206,400.

**Gujari** [g<sup>j</sup>u] *Users*: 391,000 in Pakistan (2018). *Lg Use*: Most Gujars in Pakistani Punjab may have shifted to Punjabi [p<sup>n</sup>b]. Spoken in some pockets of Punjab by immigrants from elsewhere. Used as L2 by Dari [p<sup>r</sup>s]. *Writing*: Arabic script, Naskh variant. Arabic script, Nastaliq variant, primary usage. Devanagari script, plans for future development using this script. *Worldwide*: Total users in all countries: 1,696,000.

**Hindko, Northern** [h<sup>n</sup>o] *Users*: 5,250,000 (2020 census), increasing. Total Hindko speakers: 7,000,000 (Lunsford et al 2020). *Lg Use*: All domains, except education. Used by all. Positive attitudes. Also use Saraiki [skr]. Also use Urdu [urd], especially the educated, but with varied proficiency. Also use Western Punjabi [p<sup>n</sup>b], with low proficiency. Used as L2 by Kundal Shahi [sh<sup>d</sup>], Mankiyali [n<sup>l</sup>m]. *Lg Dev*: Literature. Newspapers. Radio. TV. Videos. Grammar. Texts. *Writing*: Arabic script, Naskh variant. Arabic script, Nastaliq variant, primary usage.

**Hindko, Southern** [hnd] *Users:* 1,750,000 (2020). Total Hindko speakers: 7,000,000 (Lunsford et al 2020). *Lg Use:* Also use Northern Pashto [pbu]. Also use Saraiki [skr]. Also use Urdu [urd]. Also use Western Punjabi [pnb]. *Lg Dev:* Literature. Newspapers. Periodicals. Radio. TV. Videos. Dictionary. *Writing:* Arabic script, Naskh variant. Arabic script, Nastaliq variant, primary usage.

**Kohistani, Indus** [mvy] *Users:* 200,000 (1992). *Lg Use:* Many also use Northern Pashto [pbu]. Many also use Urdu [urd]. *Writing:* Arabic script, Naskh variant. Arabic script, Nastaliq variant, primary usage.

**Koli, Kachi** [gjk] *Users:* 130,000 in Pakistan (2018). 80,000–100,000 Kachi Koli, 5,000–6,000 Rabari, 10,000 Kachi Bhil, 50,000 Vagri, 10,000 Katai Meghwar, 1,000 Zalavaria Koli. *Lg Dev:* Grammar. NT: 2002. *Writing:* Arabic script, Naskh variant. Gujarati script, used by older people. *Worldwide:* Total users in all countries: 530,000.

**Koli, Parkari** [kvx] *Users:* 358,000 (2018). *Lg Use:* Also use Gujarati [guj]. Also use Sindhi [snd]. Also use Urdu [urd]. *Lg Dev:* NT: 1996. *Writing:* Arabic script, Naskh variant.

**Koli, Wadiyari** [kxp] *Users:* 179,000 in Pakistan (2018). *Writing:* Arabic script, Naskh variant. Gujarati script. *Worldwide:* Total users in all countries: 583,000.

**Marwari** [mve] *Users:* 164,000 (2018). 78,300 Northern Marwari and 85,600 Southern Marwari. *Lg Use:* One sweeper community of 10,000–100,000 identifies itself as Marwari, but is undergoing rapid shift to Urdu [urd]. Marwari is not usually written. Also use Hindi [hin]. Also use Saraiki [skr]. Also use Sindhi [snd], especially educated people. Also use Urdu [urd], particularly the educated. Used as L2 by Jogi [jog]. *Lg Dev:* Newspapers. NT: 1821. *Writing:* Arabic script, Naskh variant, used in Sindh Province. Arabic script, Nastaliq variant, used in Punjab Province.

**Pakistan Sign Language** [pks] *Users:* 1,080,000 (2021 DBS/DOOR/SIL). Estimated 650,000–1,300,000 deaf signers, assuming 0.3%–0.6% of total population. *Lg Use:* Used in urban centers. The National Institute of Special Education encourages a total communication approach, including the teaching of PSL. Used by all. *Lg Dev:* Dictionary.

**Palula** [phl] *Users:* 14,400 (2018). Population of Ashret and Biori Valleys is almost completely monolingual (Liljegren 2008). *Lg Use:* Vigorous within Ashret and Biori valleys. Reluctant to use Palula when speakers of other languages are present. Home, community. Used by all. Positive attitudes. Most also use Khowar [khw]. Many also use Northern Pashto [pbu]. Many also use Urdu [urd]. *Lg Dev:* Literature. Dictionary. *Writing:* Arabic script, Naskh variant, in development. Arabic script, Nastaliq variant, primary usage.

**Pashto, Northern** [pbu] *Users:* 24,300,000 in Pakistan (2017 census). Ethnic population: Possibly 49,600,000 Pashto in all countries. *Lg Use:* Rich literary tradition. The Powinda are a nomadic Pashto-speaking group. Used as L2 by Dameli [dml], Dari [prs], Gawar-Bati [gwt], Gawri [gwc], Indus Kohistani [mvy], Kalkoti [xka], Kamviri [xvi], Kati [bsh], Khowar [khw], Mankiyali [nlm], Palula [phl], Sarikoli [srh], Southern Hindko [hnd], Torwali [trw], Ushojo [ush]. *Lg Dev:* Literature. Newspapers. Periodicals. Radio. TV. Videos. Dictionary. Grammar.

Texts. Bible: 2019. *Writing*: Arabic script, Naskh variant, primary usage. Arabic script, Nastaliq variant. *Worldwide*: Total users in all countries: 30,251,740 (as L1: 28,883,240; as L2: 1,368,500).

**Punjabi, Western** [pnb] *Users*: 65,000,000 in Pakistan (2017 census). *Lg Use*: Educated younger generations living in cities opt to use Urdu [urd] and English [eng], and parents also encourage them to use Urdu or English even at home. Home, community, religious settings. Used by all. Positive attitudes. Also use Saraiki [skr]. Used as L2 by Aer [aeq], Northern Hindko [hno], Sansi [ssi], Southern Hindko [hnd]. *Lg Dev*: Literature. Newspapers. Periodicals. Radio. TV. Videos. Grammar. NT: 1819–1931. *Writing*: Arabic script, Naskh variant. Arabic script, Nastaliq variant, primary usage, also called Shahmukhi. Khojki script. Lahnda (Landa) script, no longer in use. Latin script. *Worldwide*: Total users in all countries: 66,715,480.

**Saraiki** [skr] *Users*: 25,900,000 in Pakistan (2017 census). *Lg Use*: Used by all. Positive attitudes. Also use Urdu [urd]. Used as L2 by Aer [aeq], Central Pashto [pst], Eastern Balochi [bgp], Khetrani [xhe], Marwari [mve], Northern Hindko [hno], Sansi [ssi], Sindhi [snd], Southern Hindko [hnd], Western Punjabi [pnb]. *Lg Dev*: Radio. TV. Grammar. Bible portions: 1898. *Writing*: Arabic script, Naskh variant. Arabic script, Nastaliq variant, primary usage. Devanagari script, no longer in use. Gurmukhi script, no longer in use. Khojki script. *Worldwide*: Total users in all countries: 26,219,000.

## 5 (Dispersed)

**Dari** [prs] *Users*: 921,000 in Pakistan (2022 Joshua Project), based on ethnicity, including 909,000 ethnic Tajiks who speak Dari. *Lg Use*: Most also use Khovar [khw]. Most also use Urdu [urd]. Some also use Gujarati [gju]. Some also use Northern Pashto [pbu]. Used as L2 by Hazaragi [haz]. *Writing*: Arabic script, Naskh variant, used in print. Arabic script, Nastaliq variant, used in handwriting and for book titles. *Worldwide*: Total users in all countries: 30,291,510 (as L1: 10,277,510; as L2: 20,014,000).

**Gujarati** [guj] *Lg Use*: Used by all Parsi (5,000), many Ismaili Muslims, and many Hindu sweepers (10,000–100,000). Many Parsi and Ismaili Muslims are literate. Seemingly many Gujarati-speaking sweepers are shifting to Urdu [urd]. Used as L2 by Aer [aeq], Gurgula [ggg], Jogi [jog], Memoni [mby], Parkari Koli [kvx], Vaghri [vgr]. *Writing*: Braille script. Gujarati script, primary usage. Khojki script. *Worldwide*: Total users in all countries: 62,116,220 (as L1: 57,076,220; as L2: 5,040,000).

**Kashmiri** [kas] *Users*: 361,000 in Pakistan (2017 census). *Lg Use*: Negative attitudes. *Writing*: Arabic script, Naskh variant. Arabic script, Nastaliq variant, primary usage. Devanagari script. Latin script. Sharada script, no longer in use. *Worldwide*: Total users in all countries: 7,134,610 (as L1: 7,133,800; as L2: 810).

**Pashto, Southern** [pbt] *Users*: 5,960,000 in Pakistan (2017 census). *Lg Use*: Some Pashto educated in Urdu [urd] medium schools mix the languages. Used as L2 by Waneci [wne]. *Writing*: Arabic script, Naskh variant, used in print. Arabic script, Nastaliq variant, used in

handwriting and for book titles. *Worldwide*: Total users in all countries: 19,871,430 (as L1: 16,391,430; as L2: 3,480,000).

**Punjabi, Eastern** [pan] *Users*: 15,000,000 in Pakistan (2017 census). *Lg Use*: Educated younger generations living in cities opt to use Urdu [urd] and English [eng], and parents also encourage them to use Urdu or English even at home. Home, community, religious settings. Used by all. *Writing*: Arabic script, Naskh variant. Gurmukhi script, primary usage. Khojki script. *Worldwide*: Total users in all countries: 52,077,070 (as L1: 48,299,070; as L2: 3,778,000).

## 6a (Vigorous)

**Bagri** [bgq] *Users*: 306,000 in Pakistan (2018). *Lg Use*: Also use Sindhi [snd]. Also use Urdu [urd]. *Writing*: Devanagari script. *Worldwide*: Total users in all countries: 2,196,000.

**Bateri** [btv] *Users*: 39,000 in Pakistan (2018). *Lg Use*: Vigorous. Also use Kohistani Shina [plk]. *Writing*: Unwritten. *Worldwide*: Total users in all countries: 39,800.

**Burushaski** [bsk] *Users*: 126,000 in Pakistan (2018), increasing. *Lg Use*: Vigorous, but acquiring Urdu [urd] borrowings. Positive attitudes. Also use Khovar [khw], especially Yasin dialect speakers. Also use Urdu [urd], especially women. Used as L2 by Domaaki [dmk], Khovar [khw], Wakhi [wbl]. *Lg Dev*: Literature. Dictionary. Grammar. Texts. *Writing*: Arabic script, Naskh variant, in development. Arabic script, Nastaliq variant, primary usage. Latin script. *Worldwide*: Total users in all countries: 126,300.

**Dameli** [dml] *Users*: 5,000 (Perder 2013), increasing. *Lg Use*: Vigorous. Home, community. Used by all. Most also use Northern Pashto [pbu]. Many also use Urdu [urd], especially men; a few women also use a Pashto variety. *Lg Dev*: Grammar. *Writing*: Arabic script, Naskh variant, in development. Arabic script, Nastaliq variant, in development.

**Dehwari** [deh] *Users*: 19,000 (2018). *Writing*: Unwritten.

**Gawar-Bati** [gwt] *Users*: 4,000 in Pakistan (2021). *Lg Use*: Vigorous. All domains. Most also use Khovar [khw]. Most also use Northern Pashto [pbu]. Some also use Urdu [urd]. *Writing*: Arabic script, Naskh variant. *Worldwide*: Total users in all countries: 36,000.

**Ghera** [ghr] *Users*: 10,000 (1998). *Lg Use*: Also use Sindhi [snd]. Also use Urdu [urd]. *Writing*: Unwritten.

**Goaria** [gig] *Users*: 25,400 (2000). *Lg Use*: All domains except religion. Used by all. Also use Hindi [hin], for worship. Also use Sindhi [snd], especially adults. *Writing*: Arabic script, Naskh variant.

**Gurgula** [ggg] *Users*: 35,300 (2000). *Lg Use*: All domains. Positive attitudes. Many also use Sindhi [snd]. Many also use Urdu [urd]. Also use Gujarati [guj]. *Writing*: Arabic script, Naskh variant.

**Hazaragi** [haz] *Users*: 97,600 in Pakistan (2018). *Lg Use*: Also use Dari [prs]. Also use Urdu [urd]. *Writing*: Arabic script, Naskh variant. Arabic script, Nastaliq variant, used in

handwriting and for book titles. *Worldwide*: Total users in all countries: 3,660,000.

**Jadgali** [jdg] *Users*: 15,600 in Pakistan (2004 J. Leclerc). *Writing*: Arabic script, Nastaliq variant. *Worldwide*: Total users in all countries: 25,600.

**Jandavra** [jnd] *Users*: 5,000 (1998). *Lg Use*: Used by all. Also use Sindhi [snd]. Also use Urdu [urd]. *Writing*: Unwritten.

**Jogi** [jog] *Users*: 50,000 (1996 R. Hoyle). *Lg Use*: All domains. Used by all. Most also use Dhatki [mki]. Most also use Marwari [mve]. Also use Gujarati [guj], particularly for religious purposes. Also use Hindi [hin], particularly for religious purposes. Also use Sindhi [snd], especially by women and children, but with very low proficiency, and by men in contact with outsiders. Also use Urdu [urd]. *Writing*: Unwritten.

**Kacchi** [kfr] *Users*: 50,000 in Pakistan (1998). *Writing*: Devanagari script. Gujarati script. *Worldwide*: Total users in all countries: 1,193,600 (as L1: 1,188,360; as L2: 5,240).

**Kalasha** [kls] *Users*: 5,000 (Heegård Petersen 2006). 3,200 in Northern Kalasha area; unknown and decreasing number in Southern Kalasha area. *Lg Use*: In the south, Kalasha is being supplanted by Khowar [khw] or Kati [bsh]. Home, in-group communication in the north. All also use Khowar [khw], in the south in the home, for in-group communication and elsewhere but with low proficiency; men in Birir do not speak it, but women there are learning the language. Many also use Urdu [urd], especially by women. Some also use Kati [bsh], especially in the south, in the home, and for in-group communication. Used as L2 by Kati [bsh]. *Lg Dev*: Literature. Dictionary. Grammar. Texts. *Writing*: Arabic script, Naskh variant. Arabic script, Nastaliq variant. Latin script, used since 2000, primary usage.

**Kamviri** [xvi] *Users*: 2,000 in Pakistan (2004). *Lg Use*: Most also use Khowar [khw]. Most also use Northern Pashto [pbu]. Some also use Urdu [urd]. *Writing*: Unwritten. *Worldwide*: Total users in all countries: 20,000.

**Kati** [bsh] *Users*: 7,800 in Pakistan (2018). *Lg Use*: Most also use Khowar [khw]. Many also use Northern Pashto [pbu]. Many also use Urdu [urd], especially young people and educated. Some also use Kalasha [kls]. Used as L2 by Kalasha [kls]. *Writing*: Arabic script, Naskh variant, limited usage, in development. Arabic script, Nastaliq variant, used in handwriting and for book titles. *Worldwide*: Total users in all countries: 135,800.

**Khetrani** [xhe] *Users*: 20,000 (2018). *Lg Use*: Also use Saraiki [skr]. *Writing*: Unwritten.

**Lasi** [lss] *Users*: 14,300 (2018). *Writing*: Unwritten.

**Loarki** [lrk] *Users*: 20,000 (1998). *Lg Use*: All domains. Used by all. Also use Sindhi [snd]. Also use Urdu [urd], especially educated individuals. *Writing*: Unwritten.

**Oadki** [odk] *Users*: 76,100 in Pakistan (2018). Ethnic population: 250,000 (2017 A. Ranjha). *Lg Use*: Most also use Sindhi [snd]. Also use Urdu [urd]. *Writing*: Arabic script, Naskh variant. *Worldwide*: Total users in all countries: 2,076,100.

**Pahari-Potwari** [phr] *Users*: 2,500,000 in Pakistan (Lothers and Lothers 2007). *Lg Dev*: Radio.

Bible portions: 2021. *Writing*: Arabic script, Naskh variant. Arabic script, Nastaliq variant, primary usage. *Worldwide*: Total users in all countries: 3,542,800.

**Pashto, Central** [pst] *Users*: 8,490,000 (2017 census). *Lg Use*: Also use Saraiki [skr]. Used as L2 by Ormuri [oru], Savi [sdg]. *Lg Dev*: Dictionary. Grammar. *Writing*: Arabic script, Naskh variant.

**Savi** [sdg] *Users*: 4,000 in Pakistan (2021 Forum of Language Initiatives). Ethnic population: 4,000 (2021 Forum of Language Initiatives). *Lg Use*: Used by all. Also use Central Pashto [pst]. *Writing*: Unwritten. *Worldwide*: Total users in all countries: 9,000.

**Shina** [scl] *Users*: 688,000 in Pakistan (2018), increasing. *Lg Use*: Vigorous. All domains. Used by all. Positive attitudes. Also use Urdu [urd]. Used as L2 by Balti [bft], Brokskat [bkk], Domaaki [dmk], Khowar [khw]. *Lg Dev*: Literature. Grammar. Bible portions: 1929. *Writing*: Arabic script, Naskh variant. Arabic script, Nastaliq variant, primary usage. *Worldwide*: Total users in all countries: 720,200.

**Shina, Kohistani** [plk] *Users*: 458,000 (2018), increasing. *Lg Use*: Vigorous. All domains. Used by all. Positive attitudes. Used as L2 by Bateri [btv], Chillisso [clh], Gowro [gwf]. *Lg Dev*: Literature. *Writing*: Arabic script, Nastaliq variant, in development.

**Sindhi Bhil** [sbn] *Users*: 56,500 (2000). *Lg Use*: Positive attitudes. Also use Dhatki [mki]. Also use Sindhi [snd]. Used as L2 by Kabutra [kbu]. *Writing*: Unwritten.

**Vaghri** [vgr] *Users*: 4,800 (2018). *Lg Use*: Also use Gujarati [guj]. Also use Sindhi [snd]. Also use Urdu [urd]. *Writing*: Unwritten.

**Wakhi** [wbl] *Users*: 14,200 in Pakistan (2018), increasing. *Lg Use*: Home, villages. Used by all. Positive attitudes. Most also use Urdu [urd], especially men and young people; less than half the women and few older people in remote areas speak it. Some also use Burushaski [bsk], especially older people and those who live in villages in Gojal. Some also use Khowar [khw]. *Writing*: Arabic script, Naskh variant, used in Afghanistan. Arabic script, Nastaliq variant, used in handwriting and for book titles. Cyrillic script, used in Tajikistan. Latin script, used in Pakistan, preferred script, not firmly established. *Worldwide*: Total users in all countries: 52,200.

**Waneci** [wne] *Users*: 141,000 (2018). *Lg Use*: Also use Southern Pashto [pbt]. *Writing*: Unwritten.

## 6b (Threatened)

**Aer** [aeq] *Users*: 100 (1998). Women monolingual. Ethnic population: 330 Aer in Deh area. *Lg Use*: Some young people, all adults. Also use Gujarati [guj]. Also use Saraiki [skr]. Also use Sindhi [snd], especially adult men for common topics. 100% of boys and 25% of girls attend Sindhi medium schools. Also use Western Punjabi [pnb], especially adult men of Jikrio Goth, but only for common topics. *Writing*: Unwritten.

**Bhaya** [bhe] *Users*: 70 (1998). *Lg Use*: Some young people, all adults. *Writing*: Unwritten.

- Brokskat** [bkk] *Users:* 400 in Pakistan (2022). *Lg Use:* Most also use Shina [scl]. *Writing:* Balti script. Tibetan script. *Worldwide:* Total users in all countries: 10,400.
- Chilisso** [clh] *Users:* 1,000 (1992 SIL). Ethnic population: 1,600. *Lg Use:* Socially integrated with the Kohistani Shina [plk]. Most also use Kohistani Shina [plk]. *Writing:* Unwritten.
- Gawri** [gwc] *Users:* 100,000 (Lunsford et al 2020). *Lg Use:* Apparently few remaining speakers of Dashwa dialect. Some of all ages. Most also use Northern Pashto [pbu], with some youth shifting. Many also use Urdu [urd], but uneducated people have low proficiency. Used as L2 by Kalkoti [xka], Khowar [khw]. *Lg Dev:* Grammar. Texts. *Writing:* Arabic script, Naskh variant. Arabic script, Nastaliq variant, primary usage.
- Gowro** [gwf] *Users:* 1,000 (2003 J. Baart), decreasing. *Lg Use:* Some young people, all adults. Most also use Kohistani Shina [plk]. *Writing:* Arabic script, Nastaliq variant, in development.
- Kabutra** [kbu] *Users:* 1,000 (1998). *Lg Use:* Also use Sindhi Bhil [sbn]. Also use Urdu [urd]. *Writing:* Unwritten.
- Mankiyali** [nlm] *Users:* 500 (Anjum 2016). *Lg Use:* Home, community. Some of all ages. Most also use Northern Pashto [pbu] (Anjum 2016). Most also use Urdu [urd] (Anjum 2016). Some also use English [eng] (Anjum 2016). Also use Northern Hindko [hno], with many youth shifting. *Writing:* Unwritten.
- Ormuri** [oru] *Users:* 5,000 in Pakistan (2018), decreasing. *Lg Use:* Also use Central Pashto [pst]. Also use Urdu [urd]. *Lg Dev:* Literature. Dictionary. Grammar. Texts. *Writing:* Arabic script, Naskh variant. Arabic script, Nastaliq variant. *Worldwide:* Total users in all countries: 5,050.
- Tamil** [tam] *Users:* 2,000 in Pakistan (2020 BBC). *Lg Use:* Some young people, all adults. Most also use Urdu [urd], outside the Tamil community. *Writing:* Arabic script, Naskh variant, no longer in use. Braille script. Tamil script, primary usage. *Worldwide:* Total users in all countries: 86,640,030 (as L1: 78,587,030; as L2: 8,053,000).
- Torwali** [trw] *Users:* 130,000 (Lunsford et al 2020), including an additional 10,000 more living and working abroad. *Lg Use:* Nearly half the speakers have migrated to the largest urban areas of Pakistan, where their language is being replaced by Urdu [urd] or Pashto [pbu] (2020 Z. Torwali). Home, community. Some of all ages. Positive attitudes. Most also use Northern Pashto [pbu]. Most also use Urdu [urd]. Used as L2 by Badeshi [bdz], Ushojo [ush]. *Lg Dev:* Literature. Videos. Dictionary. Grammar. *Writing:* Arabic script, Naskh variant. Arabic script, Nastaliq variant, primary usage.
- Ushojo** [ush] *Users:* 3,000 (2018). *Lg Use:* Some young people, all adults. Most also use Northern Pashto [pbu], with many school-going children shifting, particularly in the homeland. Most also use Torwali [trw], with some children shifting, particularly in the homeland. Many also use Urdu [urd], with many children shifting, particularly in large urban centers. *Writing:* Unwritten.
- Yadgha** [ydg] *Users:* 6,000 (Lunsford et al 2020). *Lg Use:* Home. Some of all ages. Positive attitudes. All also use Khowar [khw], some shifting. Most also use Urdu [urd], especially the

educated. *Writing*: Arabic script, Nastaliq variant.

## 7 (Shifting)

**Kalkoti** [[xka](#)] *Users*: 6,600 (2018). *Lg Use*: Adults only. Most shifting to Gawri [[gwc](#)] (Liljegren 2013). Most shifting to Northern Pashto [[pbu](#)] (Liljegren 2013). Many also use Urdu [[urd](#)], especially the educated and those who migrate to Punjab province each winter for employment. *Writing*: Unwritten.

**Memoni** [[mby](#)] *Lg Use*: Adults only. Many shifting to Gujarati [[guj](#)]. Many shifting to Sindhi [[snd](#)]. Also use Urdu [[urd](#)]. *Writing*: Unwritten.

**Sansi** [[ssi](#)] *Users*: 20,000 in Pakistan (2018). *Lg Use*: Some shifting to Sindhi [[snd](#)]. Some shifting to Urdu [[urd](#)]. Also use Saraiki [[skr](#)]. Also use Western Punjabi [[pnb](#)]. *Writing*: Unwritten. *Worldwide*: Total users in all countries: 80,000.

## 8a (Moribund)

**Kundal Shahi** [[shd](#)] *Users*: 700 (Rehman and Baart 2005). *Lg Use*: Home. Older adults only. Shifted to Northern Hindko [[hno](#)], especially among the younger generation. *Writing*: Unwritten.

## 8b (Nearly extinct)

**Domaaki** [[dmk](#)] *Users*: 340 (Matthias 2011), decreasing. Concentrated mostly in one village (Van Driem 2007). *Lg Use*: Home. Elderly only. Many shifted to Burushaski [[bsk](#)]. Many shifted to Shina [[scl](#)]. Also use Urdu [[urd](#)]. *Writing*: Unwritten.

**Sarikoli** [[srh](#)] *Users*: 70 in Pakistan (Torwali 2021). *Lg Use*: Elderly only. Shifted to Northern Pashto [[pbu](#)]. *Worldwide*: Total users in all countries: 16,070.

## 9 (Dormant)

**Badeshi** [[bdz](#)] *Users*: No known L1 speakers. Last speakers survived into the 2000s. Ethnic population: 2,830 (2000). *Lg Use*: Shifted to Torwali [[trw](#)]. *Writing*: Unwritten.

## Unestablished

**Bengali** [[ben](#)] *Users*: 326,000 in Pakistan (2018). *Writing*: Bengali (Bangla) script, primary usage. Braille script. Newa script, no longer in use. *Worldwide*: Total users in all countries: 272,828,760 (as L1: 233,808,880; as L2: 39,019,880).

**Chinese, Mandarin** [[cmn](#)] *Users*: 10,000 in Pakistan (2018). *Writing*: Bopomofo script, used since 1913, revised in 1920 and 1932, mainly used in Taiwan. Braille script. Han script, Simplified variant, used since 1956, official in Mainland China (1956) and Singapore (1969),

also used elsewhere. Han script, Traditional variant, used since mid-19th century, official in Taiwan, also used elsewhere. Latin script. *Worldwide*: Total users in all countries: 1,138,222,350 (as L1: 939,237,350; as L2: 198,985,000).

**Konkani, Goan** [gom] *Users*: 67,400 in Pakistan (2018). *Writing*: Devanagari script, official usage. Kannada script. Latin script. *Worldwide*: Total users in all countries: 3,725,300.

**Persian, Iranian** [pes] *Users*: 185,000 in Pakistan (2018). *Writing*: Arabic script, Naskh variant. Arabic script, Nastaliq variant, used in Iran. *Worldwide*: Total users in all countries: 78,623,350 (as L1: 57,192,350; as L2: 21,431,000).

**Rohingya** [rhg] *Users*: 350,000 in Pakistan (2017 The Arakan Project), based on nationality. *Writing*: Arabic script, Naskh variant. Hanifi Rohingya script, some development in immigrant communities for all three scripts. Latin script. *Worldwide*: Total users in all countries: 2,529,270.

**Turkish** [tur] *Users*: 6,000 in Pakistan (2018). *Writing*: Arabic script, Naskh variant, no longer in use. Braille script. Cyrillic script, used in Bulgaria. Greek script, no longer in use. Latin script, used since 1928 or 1929, primary usage. *Worldwide*: Total users in all countries: 90,028,000 (as L1: 84,010,500; as L2: 6,017,500).

**Turkmen** [tuk] *Users*: 10,900 in Pakistan (2016). *Writing*: Arabic script, Naskh variant, used in Afghanistan and Iran. Cyrillic script, used in Turkmenistan, not used in Afghanistan. Latin script, official usage in Turkmenistan since 1991. *Worldwide*: Total users in all countries: 6,562,260.

**Uyghur** [uig] *Users*: 10,000 in Pakistan (2018). A few families permanently settled in Pakistan. *Writing*: Arabic script, Naskh variant, official and primary usage in China, also used in Afghanistan. Cyrillic script, used in Kazakhstan, past usage in China. Latin script, used in China and Turkey. *Worldwide*: Total users in all countries: 10,510,072 (as L1: 10,509,952; as L2: 120).

**Uzbek, Southern** [uzs] *Users*: 267,000 in Pakistan (2022 Joshua Project). *Writing*: Arabic script, Naskh variant, used in print. Arabic script, Nastaliq variant, used in handwriting and for book titles. *Worldwide*: Total users in all countries: 3,955,900 (as L1: 3,415,900; as L2: 540,000).

## Languages by Province

This index gives an alphabetical listing of the top-level administrative subdivisions within Pakistan. Under the name of each province is a list of the language communities that are located within its area.

### Azad Kashmir

- Gujari [gju], 18
- Hindko, Northern [hno], 19
- Kashmiri [kas], 21
- Kundal Shahi [shd], 24
- Pahari-Potwari [phr], 26
- Shina [scl], 30

### Balochistan

- Balochi, Eastern [bgp], 11
- Balochi, Southern [bcc], 12
- Balochi, Western [bgn], 12
- Brahui [brh], 13
- Dehwari [deh], 15
- Hazaragi [haz], 18
- Jadgali [jdg], 19
- Khetrani [xhe], 22
- Lasi [lss], 24
- Pashto, Central [pst], 27
- Pashto, Southern [pbt], 27
- Saraiki [skr], 29
- Sindhi [snd], 31
- Waneci [wne], 35

### Gilgit Baltistan

- Balti [bft], 12
- Burushaski [bsk], 14
- Domaaki [dmk], 16
- Gujari [gju], 18
- Khowar [khw], 22
- Shina [scl], 30
- Wakhi [wbl], 35

### Islamabad

- Gujari [gju], 18
- Hindko, Northern [hno], 19
- Hindko, Southern [hnd], 19
- Pahari-Potwari [phr], 26

### Khyber Pakhtunkwa

- Badeshi [bdz], 11
- Bateri [btv], 12
- Chilisso [clh], 14
- Dameli [dml], 15
- Dari [prs], 15
- Gawar-Bati [gwt], 16
- Gawri [gwc], 16
- Gowro [gwf], 17
- Gujari [gju], 18
- Hindko, Northern [hno], 19
- Hindko, Southern [hnd], 19
- Kalasha [kls], 20
- Kalkoti [xka], 21
- Kamviri [xvi], 21
- Kati [bsh], 21
- Khowar [khw], 22
- Kohistani, Indus [mvy], 22
- Mankiyali [nlm], 24
- Ormuri [oru], 25
- Pahari-Potwari [phr], 26
- Palula [phl], 26
- Pashto, Central [pst], 27
- Pashto, Northern [pbu], 27
- Pashto, Southern [pbt], 27
- Saraiki [skr], 29
- Sarikoli [srh], 30
- Savi [sdg], 30
- Shina [scl], 30
- Shina, Kohistani [plk], 31
- Torwali [trw], 32
- Ushojo [ush], 34
- Wakhi [wbl], 35
- Yadgha [ydg], 36

**Punjab**

Bagri [bgq], 11  
Balochi, Eastern [bgp], 11  
Gujarati [guj], 17  
Gujari [gju], 18  
Hindko, Southern [hnd], 19  
Marwari [mve], 25  
Oadki [odk], 25  
Pahari-Potwari [phr], 26  
Pashto, Central [pst], 27  
Pashto, Northern [pbu], 27  
Pashto, Southern [pbt], 27  
Punjabi, Eastern [pan], 28  
Punjabi, Western [pnb], 28  
Saraiki [skr], 29

**Sindh**

Aer [aeq], 11  
Bagri [bgq], 11  
Balochi, Eastern [bgp], 11  
Balochi, Southern [bcc], 12  
Balochi, Western [bgn], 12  
Bhaya [bhe], 13  
Brahui [brh], 13

Dhatki [mki], 15  
Ghera [ghr], 17  
Goaria [gig], 17  
Gujarati [guj], 17  
Gurgula [ggg], 18  
Jadgali [jdg], 19  
Jandavra [jnd], 19  
Jogi [jog], 20  
Kabutra [kbu], 20  
Kacchi [kfr], 20  
Koli, Kachi [gjk], 23  
Koli, Parkari [kvx], 23  
Koli, Wadiyari [kxp], 23  
Loarki [lrk], 24  
Marwari [mve], 25  
Memoni [mby], 25  
Oadki [odk], 25  
Sansi [ssi], 29  
Saraiki [skr], 29  
Sindhi [snd], 31  
Sindhi Bhil [sbn], 32  
Tamil [tam], 32  
Vaghri [vgr], 35

## Languages by Family

This index gives an alphabetical listing of the linguistic classifications used for the established languages of Pakistan. The entries in this index represent the full path in the linguistic family tree from the highest level grouping down to the lowest. All the languages listed in the same entry are members of the same lowest-level subgroup. The referenced page contains the main entry that describes the language.

### **Dravidian, Northern**

Brahui [brh], [13](#)

### **Dravidian, Southern, Tamil-Kannada, Tamil-Kodagu, Tamil-Malayalam, Tamil**

Tamil [tam], [32](#)

### **Indo-European, Germanic, West, English**

English [eng], [16](#)

### **Indo-European, Indo-Iranian, Indo-Aryan, Intermediate Divisions, Western**

Domaaki [dmk], [16](#)

### **Indo-European, Indo-Iranian, Indo-Aryan, Intermediate Divisions, Western, Gujarati**

Aer [aeq], [11](#)

Gujarati [guj], [17](#)

Jandavra [jnd], [19](#)

Koli, Kachi [gjk], [23](#)

Koli, Parkari [kvx], [23](#)

Koli, Wadiyari [kxp], [23](#)

Vaghri [vgr], [35](#)

### **Indo-European, Indo-Iranian, Indo-Aryan, Intermediate Divisions, Western, Panjabi**

Punjabi, Eastern [pan], [28](#)

### **Indo-European, Indo-Iranian, Indo-Aryan, Intermediate Divisions, Western, Panjabi,**

#### **Western Panjabi**

Hindko, Northern [hno], [19](#)

Hindko, Southern [hnd], [19](#)

Khetrani [xhe], [22](#)

Pahari-Potwari [p hr], [26](#)

Punjabi, Western [pnb], [28](#)

Saraiki [skr], [29](#)

### **Indo-European, Indo-Iranian, Indo-Aryan, Intermediate Divisions, Western, Rajasthani,**

#### **Marwari**

Dhatki [mki], [15](#)

Goaria [gig], [17](#)

Jogi [jog], [20](#)

Loarki [lrk], [24](#)

Marwari [mve], 25

**Indo-European, Indo-Iranian, Indo-Aryan, Intermediate Divisions, Western, Rajasthani,  
Unclassified**

Bagri [bgq], 11

Gujari [gju], 18

Gurgula [ggg], 18

**Indo-European, Indo-Iranian, Indo-Aryan, Outer Languages, Northwestern, Dardic, Chitral**

Kalasha [kls], 20

Khovar [khw], 22

**Indo-European, Indo-Iranian, Indo-Aryan, Outer Languages, Northwestern, Dardic,  
Kashmiri**

Kashmiri [kas], 21

**Indo-European, Indo-Iranian, Indo-Aryan, Outer Languages, Northwestern, Dardic,  
Kohistani**

Bateri [btv], 12

Chilisso [clh], 14

Gawri [gwc], 16

Gowro [gwf], 17

Kohistani, Indus [mvy], 22

Mankiyali [nlm], 24

Torwali [trw], 32

**Indo-European, Indo-Iranian, Indo-Aryan, Outer Languages, Northwestern, Dardic, Kunar**

Dameli [dml], 15

Gawar-Bati [gwt], 16

**Indo-European, Indo-Iranian, Indo-Aryan, Outer Languages, Northwestern, Dardic, Shina**

Brokskat [bkk], 14

Kalkoti [xka], 21

Kundal Shahi [shd], 24

Palula [phl], 26

Savi [sdg], 30

Shina [scl], 30

Shina, Kohistani [plk], 31

Ushojo [ush], 34

**Indo-European, Indo-Iranian, Indo-Aryan, Outer Languages, Northwestern, Sindhi**

Jadgali [jdg], 19

Kacchi [kfr], 20

Lasi [lss], 24

Sindhi [snd], 31

Sindhi Bhil [sbn], 32

**Indo-European, Indo-Iranian, Indo-Aryan, Unclassified**

Memoni [mby], 25

Oadki [odk], 25

**Indo-European, Indo-Iranian, Indo-Aryan, Western Hindi, Hindustani**

Urdu [urd], 33

**Indo-European, Indo-Iranian, Indo-Aryan, Western Hindi, Hindustani, Sansi**

Kabutra [kbu], 20

Sansi [ssi], 29

**Indo-European, Indo-Iranian, Indo-Aryan, Western Hindi, Unclassified**

Bhaya [bhe], 13

Ghera [ghr], 17

**Indo-European, Indo-Iranian, Iranian, Eastern, Southeastern, Pamir**

Wakhi [wbl], 35

Yadgha [ydg], 36

**Indo-European, Indo-Iranian, Iranian, Eastern, Southeastern, Pamir, Shugni-Yazgulami**

Sarikoli [srh], 30

**Indo-European, Indo-Iranian, Iranian, Eastern, Southeastern, Pashto**

Pashto, Central [pst], 27

Pashto, Northern [pbu], 27

Pashto, Southern [pbt], 27

Waneci [wne], 35

**Indo-European, Indo-Iranian, Iranian, Western, Northwestern, Balochi**

Balochi, Eastern [bgp], 11

Balochi, Southern [bcc], 12

Balochi, Western [bgn], 12

**Indo-European, Indo-Iranian, Iranian, Western, Northwestern,Ormuri-Parachi**

Ormuri [oru], 25

**Indo-European, Indo-Iranian, Iranian, Western, Southwestern, Persian**

Dari [prs], 15

Dehwari [deh], 15

Hazaragi [haz], 18

**Indo-European, Indo-Iranian, Nuristani**

Kamviri [xvi], 21

Kati [bsh], 21

**Indo-European, Indo-Iranian, Unclassified**

Badeshi [bdz], 11

**Language isolate**

Burushaski [bsk], 14

**Sign language, Deaf community sign language**

Pakistan Sign Language [pks], 26

**Sino-Tibetan, Tibeto-Burman, Western Tibeto-Burman, Bodish, Central Bodish, Western**

Balti [bft], 12

## Language Code Index

This index gives an alphabetical listing of all 90 three-letter codes that are used in this work to uniquely identify languages. The referenced page contains the main entry that describes the language. All codes listed are part of the ISO 639-3 standard; see <http://www.sil.org/iso639-3/>.

<b>aeq</b>	Aer, 11	<b>jnd</b>	Jandavra, 19
<b>bal</b>	Baluchi, 12	<b>jog</b>	Jogi, 20
<b>bcc</b>	Balochi, Southern, 12	<b>kas</b>	Kashmiri, 21
<b>bdz</b>	Badeshi, 11	<b>kbu</b>	Kabutra, 20
<b>ben</b>	Bengali, 13	<b>kfr</b>	Kacchi, 20
<b>bft</b>	Balti, 12	<b>khw</b>	Khowar, 22
<b>bgn</b>	Balochi, Western, 12	<b>kls</b>	Kalasha, 20
<b>bgp</b>	Balochi, Eastern, 11	<b>kvx</b>	Koli, Parkari, 23
<b>bgq</b>	Bagri, 11	<b>kxp</b>	Koli, Wadiyari, 23
<b>bhe</b>	Bhaya, 13	<b>lah</b>	Lahnda, 24
<b>bkk</b>	Brokskat, 14	<b>lrk</b>	Loarki, 24
<b>brh</b>	Brahui, 13	<b>lss</b>	Lasi, 24
<b>bsh</b>	Kati, 21	<b>mby</b>	Memoni, 25
<b>bsk</b>	Burushaski, 14	<b>mki</b>	Dhatki, 15
<b>btv</b>	Bateri, 12	<b>mve</b>	Marwari (Pakistan), 25
<b>clh</b>	Chilisso, 14	<b>mvy</b>	Kohistani, Indus, 22
<b>cmn</b>	Chinese, Mandarin, 14	<b>nlm</b>	Mankiyali, 24
<b>deh</b>	Dehwari, 15	<b>odk</b>	Oadki, 25
<b>dmk</b>	Domaaki, 16	<b>oru</b>	Ormuri, 25
<b>dml</b>	Dameli, 15	<b>pan</b>	Punjabi, Eastern, 28
<b>eng</b>	English, 16	<b>pbt</b>	Pashto, Southern, 27
<b>ggg</b>	Gurgula, 18	<b>pbu</b>	Pashto, Northern, 27
<b>ghr</b>	Ghera, 17	<b>pes</b>	Persian, Iranian, 28
<b>gig</b>	Goaria, 17	<b>phi</b>	Palula, 26
<b>gjk</b>	Koli, Kachi, 23	<b>phr</b>	Pahari-Potwari, 26
<b>gju</b>	Gujari, 18	<b>pks</b>	Pakistan Sign Language, 26
<b>gom</b>	Konkani, Goan, 24	<b>plk</b>	Shina, Kohistani, 31
<b>guj</b>	Gujarati, 17	<b>pnb</b>	Punjabi, Western, 28
<b>gwc</b>	Gawri, 16	<b>prs</b>	Dari, 15
<b>gwf</b>	Gowro, 17	<b>pst</b>	Pashto, Central, 27
<b>gwt</b>	Gawar-Bati, 16	<b>pus</b>	Pushto, 29
<b>haz</b>	Hazaragi, 18	<b>rhg</b>	Rohingya, 29
<b>hnd</b>	Hindko, Southern, 19	<b>sbn</b>	Sindhi Bhil, 32
<b>hno</b>	Hindko, Northern, 19	<b>scl</b>	Shina, 30
<b>jdg</b>	Jadgali, 19	<b>sdg</b>	Savi, 30

<b>shd</b>	Kundal Shahi, <a href="#">24</a>	<b>urd</b>	Urdu, <a href="#">33</a>
<b>skr</b>	Saraiki, <a href="#">29</a>	<b>ush</b>	Ushojo, <a href="#">34</a>
<b>snd</b>	Sindhi, <a href="#">31</a>	<b>uzs</b>	Uzbek, Southern, <a href="#">34</a>
<b>srh</b>	Sarikoli, <a href="#">30</a>	<b>vgr</b>	Vaghri, <a href="#">35</a>
<b>ssi</b>	Sansi, <a href="#">29</a>	<b>wbl</b>	Wakhi, <a href="#">35</a>
<b>tam</b>	Tamil, <a href="#">32</a>	<b>wne</b>	Waneci, <a href="#">35</a>
<b>trw</b>	Torwali, <a href="#">32</a>	<b>xhe</b>	Khetrani, <a href="#">22</a>
<b>tuk</b>	Turkmen, <a href="#">33</a>	<b>xka</b>	Kalkoti, <a href="#">21</a>
<b>tur</b>	Turkish, <a href="#">33</a>	<b>xvi</b>	Kamviri, <a href="#">21</a>
<b>uig</b>	Uyghur, <a href="#">34</a>	<b>ydg</b>	Yadgha, <a href="#">36</a>

## Language Name Index

This index lists every name that appears in the language listings as a primary or alternate name of a language or dialect. The following abbreviations are used in the index entries: *alt.* ‘alternate name for’; *alt. dial.* ‘alternate name for a dialect of’; *dial.* ‘primary name for a dialect of’; *pej. alt.* ‘pejorative alternate name for’; and *pej. alt. dial.* ‘pejorative alternate name for a dialect of’. Each index entry resolves to the primary name for the language with which the indexed name is associated, followed by square brackets containing the unique three-letter language code from ISO 639-3. The referenced page contains the main entry that describes the language. If the language appears on a map, the entry for the primary name also lists page numbers for the maps on which the language occurs.

- Abbottabad Hindko**, *dial.* Hindko, Northern [hno], 19
- Aer** [aeq], 11, 38
- Afghan Persian**, *alt.* Dari [prs], 15
- Apeen Bol**, *alt.* Kundal Shahi [shd], 24
- Arandui**, *alt.* Gawar-Bati [gwt], 16
- Arniya**, *alt.* Khovar [khw], 22
- Ashreti**, *dial.* Palula [phl], 26
- Astor**, *alt. dial.* Shina [scl], 30
- Astori**, *dial.* Shina [scl], 30
- Attock Hindko**, *dial.* Hindko, Southern [hnd], 19
- Attock-Haripur Hindko**, *alt. dial.* Hindko, Southern [hnd], 19
- Avankari Hindko**, *dial.* Hindko, Southern [hnd], 19
- Azargi**, *alt.* Hazaragi [haz], 18
- Badakhshi**, *alt.* Badeshi [bdz], 11  
*alt.* Dari [prs], 15
- Badeshi** [bdz], 11
- Badin**, *dial.* Sindhi Bhil [sbn], 32
- Bagari**, *alt.* Bagri [bgq], 11
- Bagri** [bgq], 11, 38
- Bagria**, *alt.* Bagri [bgq], 11
- Bagris**, *alt.* Bagri [bgq], 11
- Bagrote**, *alt. dial.* Shina [scl], 30
- Bahgri**, *alt.* Bagri [bgq], 11
- Bahrain**, *dial.* Torwali [trw], 32
- Balóchi**, *alt.* Balochi, Southern [bcc], 12
- Balochi, Eastern** [bgp], 11, 38  
*see* Balochi, Eastern [bgp], 11
- Balochi, Southern** [bcc], 12, 38  
*see* Balochi, Southern [bcc], 12
- Balochi, Western** [bgn], 12, 38  
*see* Balochi, Western [bgn], 12
- Baloci**, *alt.* Balochi, Eastern [bgp], 11  
*alt.* Balochi, Southern [bcc], 12  
*alt.* Balochi, Western [bgn], 12
- Balti** [bft], 12, 38
- Baltistani**, *alt.* Balti [bft], 12
- Baluchi**, *alt.* Balochi, Eastern [bgp], 11  
*alt.* Balochi, Southern [bcc], 12  
*alt.* Balochi, Western [bgn], 12
- Baluci**, *alt.* Balochi, Eastern [bgp], 11  
*alt.* Balochi, Southern [bcc], 12  
*alt.* Balochi, Western [bgn], 12
- Bankad**, *dial.* Kohistani, Indus [mvy], 22
- Bannochoi**, *alt. dial.* Pashto, Central [pst], 27
- Bannu**, *alt. dial.* Pashto, Central [pst], 27
- Bannuchi**, *dial.* Pashto, Central [pst], 27
- Baorias**, *alt.* Bagri [bgq], 11
- Bara**, *alt.* Ghera [ghr], 17
- Barage**, *dial.* Dhatki [mki], 15

- Baraki**, *alt.* Ormuri [oru], 25
- Bargista**, *alt.* Ormuri [oru], 25
- Bashgali**, *alt.* Kati [bsh], 21
- Bashgharik**, *alt.* Gawri [gwc], 16
- Bashkarik**, *alt.* Gawri [gwc], 16
- Baskarik**, *alt.* Gawri [gwc], 16
- Batera Kohistani**, *alt.* Bateri [btv], 12
- Baterawal**, *alt.* Bateri [btv], 12
- Baterawal Kohistani**, *alt.* Bateri [btv], 12
- Bateri** [btv], 12, 38
- Bateri Kohistani**, *alt.* Bateri [btv], 12
- Bavri**, *alt.* Vaghri [vgr], 35
- Bawri**, *alt.* Bagri [bgq], 11
- Belochki**, *alt.* Saraiki [skr], 29
- Bericho**, *alt.* Domaaki [dmk], 16
- Berki**, *alt.* Ormuri [oru], 25
- Bhaṭ'e-sa z'ib**, *alt.* Bateri [btv], 12
- Bhaya** [bhe], 13, 38
- Bhilki**, *alt.* Sansi [ssi], 29
- Bhotia of Baltistan**, *alt.* Balti [bft], 12
- Bihari**, *alt.* Urdu [urd], 33
- Biltum**, *alt.* Burushaski [bsk], 14
- Birahui**, *alt.* Brahui [brh], 13
- Birir**, *alt. dial.* Kalasha [kls], 20
- Birki**, *alt.* Ormuri [oru], 25
- Biyori**, *alt.* Palula [phl], 26
- Brahui** [brh], 13, 38
- Brahuidi**, *alt.* Brahui [brh], 13
- Brahuigi**, *alt.* Brahui [brh], 13
- Brakee**, *alt.* Ormuri [oru], 25
- Braki**, *alt.* Ormuri [oru], 25
- Brokpa**, *alt.* Shina [scl], 30
- Brokskat** [bkk], 14
- Broshaaski**, *alt.* Burushaski [bsk], 14
- Brushaski**, *alt.* Burushaski [bsk], 14
- Bumboret**, *alt. dial.* Kalasha [kls], 20
- Bunji**, *alt. dial.* Shina [scl], 30
- Burki**, *alt.* Ormuri [oru], 25
- Burucaki**, *alt.* Burushaski [bsk], 14
- Burucaski**, *alt.* Burushaski [bsk], 14
- Burushaki**, *alt.* Burushaski [bsk], 14
- Burushashki**, *alt.* Burushaski [bsk], 14
- Burushaski** [bsk], 14, 38
- Burushaski Hunza**, *alt.* Burushaski [bsk], 14
- Burushki**, *alt.* Burushaski [bsk], 14
- Byltae**, *alt.* Balti [bft], 12
- Calasa**, *alt.* Kalasha [kls], 20
- Cashmeeree**, *alt.* Kashmiri [kas], 21
- Cashmiri**, *alt.* Kashmiri [kas], 21
- Central Dhatki**, *dial.* Dhatki [mki], 15
- Central Punjabi**, *alt. dial.* Punjabi, Western [pnb], 28
- Central Saraiki**, *dial.* Saraiki [skr], 29
- Central Sindhi**, *alt. dial.* Sindhi [snd], 31
- Chail**, *dial.* Torwali [trw], 32
- Chalgari**, *alt.* Waneci [wne], 35
- Chhachhi**, *dial.* Hindko, Southern [hnd], 19
- Chibhali**, *alt. dial.* Pahari-Potwari [phr], 26
- Chilas**, *alt. dial.* Shina [scl], 30
- Chilasi Kohistani**, *dial.* Shina [scl], 30
- Chiliss**, *alt.* Chilisso [clh], 14
- Chilisso** [clh], 14, 38
- Mandarin Chinese**, *see* Chinese, Mandarin [cmn], 14
- Chitrali**, *alt.* Khowar [khw], 22
- Chitrari**, *alt.* Khowar [khw], 22
- Citrari**, *alt.* Khowar [khw], 22
- Coastal Balochi**, *dial.* Balochi, Southern [bcc], 12
- Cuchi**, *alt.* Kacchi [kfr], 20
- Cutch**, *alt.* Kacchi [kfr], 20
- Damedi**, *alt.* Dameli [dml], 15
- Damel**, *alt.* Dameli [dml], 15
- Dameli** [dml], 15, 38

- Damia**, *alt.* Dameli [dml], 15
- Damiabaasha**, *alt.* Dameli [dml], 15
- Dangarikwar**, *alt.* Palula [phl], 26
- Dardu**, *alt.* Kalasha [kls], 20
- Darel**, *alt. dial.* Shina [scl], 30
- Dari** [prs], 15, 38
- Dashwa**, *dial.* Gawri [gwc], 16
- Dawoodi**, *alt.* Domaaki [dmk], 16
- Deghwari**, *alt.* Dehwari [deh], 15
- Dehwari** [deh], 15, 38
- Dhanni**, *alt. dial.* Punjabi, Western [pnb], 28
- Dhanni Boli**, *alt. dial.* Punjabi, Western [pnb], 28
- Dhati**, *alt.* Dhatki [mki], 15
- Dhatki** [mki], 15, 38
- Dhundi-Kairali**, *alt. dial.* Pahari-Potwari [phr], 26
- Dir Kohistani**, *alt.* Gawri [gwc], 16
- Diri**, *alt.* Gawri [gwc], 16
- Dirwali**, *alt.* Gawri [gwc], 16
- Doabi**, *dial.* Punjabi, Eastern [pan], 28
- Dom**, *alt.* Domaaki [dmk], 16
- Doma**, *alt.* Domaaki [dmk], 16
- Domaaki** [dmk], 16, 38
- Dras**, *alt. dial.* Shina [scl], 30
- Duber**, *alt. dial.* Kohistani, Indus [mvy], 22
- Duber-Kandia**, *dial.* Kohistani, Indus [mvy], 22
- Dukslinu**, *dial.* Sindhi [snd], 31
- Dumaki**, *alt.* Domaaki [dmk], 16
- East Khowar**, *dial.* Khowar [khw], 22
- Eastern Afghan Pashto**, *dial.* Pashto, Northern [pbu], 27
- Eastern Dhatki**, *dial.* Dhatki [mki], 15
- Eastern Gujarati**, *dial.* Gujarati [gju], 18
- Eastern Hill Balochi**, *alt.* Balochi, Eastern [bgp], 11
- Eastern Kativiri**, *dial.* Kati [bsh], 21
- Eastern Panjabi**, *alt.* Punjabi, Eastern [pan], 28
- Eastern Saraiki**, *dial.* Saraiki [skr], 29
- English** [eng], 16
- Gaawro**, *alt.* Gawri [gwc], 16
- Gabar Khel**, *alt.* Gowro [gwf], 17
- Gabaro**, *alt.* Gowro [gwf], 17
- Galiyat Hindko**, *dial.* Hindko, Northern [hno], 19
- Galos**, *alt.* Chilisso [clh], 14
- Garwa**, *alt.* Gawri [gwc], 16
- Garwi**, *alt.* Gawri [gwc], 16
- Gawar-Bati** [gwt], 16, 38
- Gawri** [gwc], 16, 38
- Ghebi**, *dial.* Hindko, Southern [hnd], 19
- Ghera** [ghr], 17, 38
- Gidoji**, *alt.* Dameli [dml], 15
- Gilgit**, *alt. dial.* Shina [scl], 30
- Gilgiti**, *dial.* Shina [scl], 30
- Goaria** [gig], 17
- Gogri**, *alt.* Gujarati [gju], 18
- Gojal**, *dial.* Wakhi [wbl], 35
- Gojari**, *alt.* Gujarati [gju], 18
- Gojri**, *alt.* Gujarati [gju], 18
- Gowar-Bati**, *alt.* Gawar-Bati [gwt], 16
- Gowari**, *alt.* Gawar-Bati [gwt], 16
- Gowri**, *alt.* Gawri [gwc], 16
- Gowro** [gwf], 17, 38
- Gudoji**, *alt.* Dameli [dml], 15
- Gujar Khan**, *dial.* Pahari-Potwari [phr], 26
- Gujarati** [guj], 17
- Gujari** [gju], 18, 38, 38
- Gujer**, *alt.* Gujarati [gju], 18
- Gujjari**, *alt.* Gujarati [gju], 18
- Gujuri**, *alt.* Gujarati [gju], 18
- Gujuri Rajasthani**, *alt.* Gujarati [gju], 18

- Gurezi**, *alt. dial.* Shina [scl], 30
- Gurgula** [ggg], 18
- Haramosh**, *alt. dial.* Shina [scl], 30
- Harban**, *alt. dial.* Shina [scl], 30
- Haripur Hindko**, *dial.* Hindko, Northern [hno], 19
- Hasoria Bhil**, *dial.* Koli, Wadiyari [kxp], 23
- Hasoria Koli**, *dial.* Koli, Wadiyari [kxp], 23
- Hazara**, *alt.* Hazaragi [haz], 18
- Hazara Hindko**, *alt.* Hindko, Northern [hno], 19
- Hazaragi** [haz], 18, 38
- Hezareh**, *alt.* Hazaragi [haz], 18
- Hindki**, *pej. alt.* Hindko, Northern [hno], 19
- Hindko**, *alt.* Hindko, Northern [hno], 19  
*alt.* Hindko, Southern [hnd], 19
- Hindko, Northern** [hno], 19, 38, 38  
*see* Hindko, Northern [hno], 19
- Hindko, Southern** [hnd], 19, 38, 38  
*see* Hindko, Southern [hnd], 19
- Hindu Sindhi**, *alt. dial.* Sindhi [snd], 31
- Hunza**, *dial.* Burushaski [bsk], 14
- Hunza-Nagar**, *alt. dial.* Shina [scl], 30
- Indo-Pakistani Sign Language**, *alt.* Pakistan Sign Language [pks], 26
- Indus**, *dial.* Kohistani, Indus [mvy], 22
- IPSL**, *alt.* Pakistan Sign Language [pks], 26
- Isharon Ki Zubann**, *alt.* Pakistan Sign Language [pks], 26
- Ishkoman**, *dial.* Wakhi [wbl], 35
- Jadeji**, *dial.* Kacchi [kfr], 20
- Jadgali** [jdg], 19, 38
- Jafri**, *dial.* Khetrani [xhe], 22
- Jaiselmer**, *alt.* Marwari [mve], 25
- Jalkot**, *alt. dial.* Shina, Kohistani [plk], 31
- Jalkoti**, *dial.* Shina, Kohistani [plk], 31
- Jamesabad Aer**, *dial.* Aer [aeq], 11
- Jandavra** [jnd], 19, 38
- Jangli**, *alt.* Punjabi, Western [pnb], 28  
*dial.* Punjabi, Western [pnb], 28
- Jangli Boli**, *alt. dial.* Punjabi, Western [pnb], 28
- Jat**, *alt.* Jadgali [jdg], 19
- Jatgali**, *alt.* Jadgali [jdg], 19
- Jatki**, *alt. dial.* Punjabi, Western [pnb], 28  
*alt.* Jadgali [jdg], 19
- Jhandoria**, *alt.* Jandavra [jnd], 19
- Jhangi**, *alt. dial.* Punjabi, Western [pnb], 28
- Jharawan**, *dial.* Brahui [brh], 13
- Jhelum**, *dial.* Punjabi, Western [pnb], 28
- Jijal**, *alt. dial.* Kohistani, Indus [mvy], 22
- Jikrio Goth Aer**, *dial.* Aer [aeq], 11
- Jogi** [jog], 20
- Kabutra** [kbu], 20
- Kacchi** [kfr], 20
- Kachchhi**, *alt.* Kacchi [kfr], 20
- Kachchi**, *alt.* Kacchi [kfr], 20
- Kachi**, *alt.* Kacchi [kfr], 20  
*alt.* Koli, Kachi [gjk], 23  
*dial.* Koli, Kachi [gjk], 23
- Kachi Bhil**, *dial.* Koli, Kachi [gjk], 23
- Kachi Gujarati**, *alt.* Koli, Kachi [gjk], 23
- Kachi Meghwar**, *alt. dial.* Koli, Kachi [gjk], 23
- Kacmiri**, *alt.* Kashmiri [kas], 21
- Kagani**, *alt.* Hindko, Northern [hno], 19
- Kaghani**, *alt.* Hindko, Northern [hno], 19
- Kalam**, *dial.* Gawri [gwc], 16
- Kalam Kohistani**, *alt.* Gawri [gwc], 16
- Kalami**, *alt.* Gawri [gwc], 16
- Kalasa**, *alt.* Kalasha [kls], 20
- Kal'as'amon**, *alt.* Kalasha [kls], 20
- Kalash**, *alt.* Kalasha [kls], 20
- Kalasha** [kls], 20, 38
- Kalashamon**, *alt.* Kalasha [kls], 20
- Kalashamond**, *alt.* Kalasha [kls], 20

- Kalashamondr**, *alt.* Kalasha [kls], 20
- Kalashi**, *alt.* Kalasha [kls], 20
- Kalat**, *dial.* Brahui [brh], 13
- Kalkoti** [xka], 21, 38
- Kamdeshi**, *alt.* Kamviri [xvi], 21
- Kamik**, *alt.* Kamviri [xvi], 21
- Kamviri** [xvi], 21, 38  
*dial.* Kamviri [xvi], 21
- Kanigurami**, *dial.* Ormuri [oru], 25
- Kaschemiri**, *alt.* Kashmiri [kas], 21
- Kashkari**, *alt.* Khowar [khw], 22
- Kashmir Gujuri**, *alt.* Gujari [gju], 18
- Kashmiri** [kas], 21, 38
- Kata viri**, *alt.* Kati [bsh], 21
- Katai Meghwar**, *dial.* Koli, Kachi [gjk], 23
- Kât'a-vari**, *alt.* Kati [bsh], 21
- Katch**, *alt.* Kacchi [kfr], 20
- Katchi**, *alt.* Kacchi [kfr], 20  
*alt.* Koli, Kachi [gjk], 23
- Kati** [bsh], 21, 38
- Katiawari Kachi**, *dial.* Sindhi [snd], 31
- Kativiri**, *alt.* Kati [bsh], 21
- Kautchy**, *alt.* Kacchi [kfr], 20
- Kechi**, *dial.* Balochi, Southern [bcc], 12
- Keci**, *alt. dial.* Balochi, Southern [bcc], 12
- Keshuri**, *alt.* Kashmiri [kas], 21
- Khajuna**, *pej. alt. dial.* Burushaski [bsk], 14
- Kharmangi**, *alt. dial.* Shina [scl], 30
- Khawar**, *alt.* Khowar [khw], 22
- Khetrani** [xhe], 22, 38
- Khik**, *alt.* Wakhi [wbl], 35
- Khikwar**, *alt.* Wakhi [wbl], 35
- Khili**, *alt. dial.* Kohistani, Indus [mvy], 22  
*alt.* Kohistani, Indus [mvy], 22
- Khowar** [khw], 22, 38
- Khushabi**, *dial.* Punjabi, Western [pnb], 28
- Kohat Hindko**, *dial.* Hindko, Southern [hnd], 19
- Kohati**, *alt. dial.* Hindko, Southern [hnd], 19
- Kohistana**, *alt.* Gawri [gwc], 16
- Kohistani**, *alt.* Gawri [gwc], 16  
*alt.* Kohistani, Indus [mvy], 22  
*alt.* Shina, Kohistani [plk], 31  
*alt.* Torwali [trw], 32
- Kohistani, Indus** [mvy], 22, 38  
*see* Kohistani, Indus [mvy], 22
- Kohistë**, *alt.* Kohistani, Indus [mvy], 22
- Kohistyo**, *alt.* Shina, Kohistani [plk], 31
- Kohli**, *alt.* Koli, Kachi [gjk], 23
- Kolai**, *dial.* Shina, Kohistani [plk], 31
- Kolhi**, *alt.* Koli, Kachi [gjk], 23
- Koli**, *alt. dial.* Shina, Kohistani [plk], 31  
*alt.* Koli, Kachi [gjk], 23
- Koli, Kachi** [gjk], 23, 38  
*see* Koli, Kachi [gjk], 23
- Koli, Parkari** [kvx], 23, 38  
*see* Koli, Parkari [kvx], 23
- Koli, Wadiyari** [kxp], 23, 38  
*see* Koli, Wadiyari [kxp], 23
- Goan Konkani**, *see* Konkani, Goan [gom], 24
- Kori**, *alt.* Koli, Kachi [gjk], 23
- Kuchi**, *alt.* Koli, Kachi [gjk], 23
- Kundal Shahi** [shd], 24, 38
- Kunjut**, *alt. dial.* Burushaski [bsk], 14
- Kur Galli**, *alt.* Brahui [brh], 13
- Kutchchi**, *alt.* Kacchi [kfr], 20
- Kutchie**, *alt.* Kacchi [kfr], 20
- Lahanda**, *alt.* Punjabi, Western [pnb], 28
- Lahnda**, *alt.* Punjabi, Western [pnb], 28
- Lahndi**, *alt.* Punjabi, Western [pnb], 28
- Lahori**, *alt. dial.* Punjabi, Western [pnb], 28
- Lamertiviri**, *alt.* Kamviri [xvi], 21
- Lamochari**, *dial.* Punjabi, Western [pnb], 28
- Lamti**, *alt. dial.* Gawri [gwc], 16
- Lamuti**, *dial.* Gawri [gwc], 16

- Lari**, *dial.* Sindhi [snd], 31
- Lashari**, *dial.* Balochi, Western [bgn], 12
- Lasi** [lss], 24, 38  
*dial.* Sindhi [snd], 31
- Lassi**, *alt.* Lasi [lss], 24
- Loarki** [lrk], 24
- Lotkohiwar**, *alt.* Yadgha [ydg], 36
- Lotuni**, *alt. dial.* Balochi, Southern [bcc], 12
- Macharia**, *dial.* Sindhi [snd], 31
- Madaglashti**, *alt.* Dari [prs], 15
- Mahsudi**, *alt.* Pashto, Central [pst], 27
- Mair**, *alt.* Kohistani, Indus [mvy], 22
- Maiyā**, *alt.* Kohistani, Indus [mvy], 22
- Maiyon**, *alt.* Kohistani, Indus [mvy], 22
- Majhi**, *alt. dial.* Punjabi, Western [pnb], 28
- Makrani**, *alt.* Balochi, Southern [bcc], 12  
*dial.* Balochi, Southern [bcc], 12
- Malhi**, *dial.* Dhatki [mki], 15
- Malwa**, *alt. dial.* Punjabi, Eastern [pan], 28
- Malwai**, *dial.* Punjabi, Eastern [pan], 28
- Mani**, *alt. dial.* Kohistani, Indus [mvy], 22
- Mankiyali** [nlm], 24, 38
- Mansehra Hindko**, *dial.* Hindko, Northern [hno], 19
- Manzari**, *alt. dial.* Kohistani, Indus [mvy], 22
- Marawar**, *alt.* Marwari [mve], 25
- Marwari** [mve], 25, 38
- Marwari Bhat**, *dial.* Marwari [mve], 25
- Marwari Bhil**, *dial.* Marwari [mve], 25
- Marwari Ghera**, *alt.* Gurgula [ggg], 18
- Marwari Meghwar**, *dial.* Marwari [mve], 25
- Mayvasi Koli**, *alt. dial.* Koli, Wadiyari [kxp], 23
- Meghwar Bhil**, *alt.* Sindhi Bhil [sbn], 32
- Memoni** [mby], 25
- Merwari**, *alt.* Marwari [mve], 25
- Mewasi**, *dial.* Koli, Wadiyari [kxp], 23
- Mirpuri**, *dial.* Pahari-Potwari [phr], 26
- Miśa:ski**, *alt.* Burushaski [bsk], 14
- Mishāski**, *alt.* Burushaski [bsk], 14
- Modern Standard Urdu**, *alt.* Urdu [urd], 33
- Mohrano**, *dial.* Sindhi Bhil [sbn], 32
- Muko-Tuko**, *alt. dial.* Hindko, Northern [hno], 19
- Mumviri**, *dial.* Kati [bsh], 21
- Munji-war**, *alt.* Yadgha [ydg], 36
- Muslim Sindhi**, *alt. dial.* Sindhi [snd], 31
- Nagar**, *dial.* Burushaski [bsk], 14
- Nagir**, *alt. dial.* Burushaski [bsk], 14
- Nairya Koli**, *dial.* Koli, Wadiyari [kxp], 23
- Narisati**, *alt.* Gawar-Bati [gwt], 16
- Narsati**, *alt.* Gawar-Bati [gwt], 16
- Nat**, *alt.* Kabutra [kbu], 20
- Natra**, *alt.* Kabutra [kbu], 20
- Ningraharian Pashto**, *dial.* Pashto, Northern [pbu], 27
- North Khowar**, *dial.* Khowar [khw], 22
- Northeastern Pashto**, *dial.* Pashto, Northern [pbu], 27
- Northern Kalasha**, *dial.* Kalasha [kls], 20
- Northern Marwari**, *dial.* Marwari [mve], 25
- Northern Palula**, *dial.* Palula [phl], 26
- Northern Saraiki**, *dial.* Saraiki [skr], 29
- Nuristani**, *alt.* Kati [bsh], 21
- Oad**, *alt.* Oadki [odk], 25
- Oadki** [odk], 25, 38
- Od**, *alt.* Oadki [odk], 25
- Odh**, *alt.* Oadki [odk], 25
- Odki**, *alt.* Oadki [odk], 25
- Ormar**, *alt.* Ormuri [oru], 25
- Ormari**, *alt.* Ormuri [oru], 25
- Ormui**, *alt.* Ormuri [oru], 25
- Ormur**, *alt.* Ormuri [oru], 25
- Ormuri** [oru], 25, 38

- Pahari**, *alt.* Pahari-Potwari [phr], 26  
*dial.* Pahari-Potwari [phr], 26
- Pahari-Pothowari**, *alt.* Pahari-Potwari [phr], 26
- Pahari-Potwari** [phr], 26, 38, 38
- Pakhto**, *alt.* Pashto, Northern [pbu], 27
- Pakistan Sign Language** [pks], 26, 0
- Palas**, *alt. dial.* Shina, Kohistani [plk], 31
- Palasi**, *dial.* Shina, Kohistani [plk], 31
- Palasi-Kohistani**, *alt.* Shina, Kohistani [plk], 31
- Palola**, *alt.* Palula [phl], 26
- Palula** [phl], 26, 38
- Panjabi**, *alt.* Punjabi, Western [pnb], 28
- Panjabi Proper**, *alt.* Punjabi, Western [pnb], 28
- Parkari**, *alt.* Koli, Parkari [kvx], 23
- Pashto, Central** [pst], 27, 38  
*see* Pashto, Central [pst], 27
- Pashto, Northern** [pbu], 27, 38, 38  
*see* Pashto, Northern [pbu], 27
- Pashto, Southern** [pbt], 27, 38  
*see* Pashto, Southern [pbt], 27
- Pashtu**, *alt.* Pashto, Northern [pbu], 27  
*alt.* Pashto, Southern [pbt], 27
- Patrak**, *alt. dial.* Gawri [gwc], 16
- Pattan**, *alt. dial.* Kohistani, Indus [mvy], 22
- Patu**, *alt.* Khowar [khw], 22
- Iranian Persian**, *see* Persian, Iranian [pes], 28
- Peshawar Hindko**, *dial.* Hindko, Southern [hnd], 19
- Peshawari**, *alt. dial.* Hindko, Southern [hnd], 19
- Phalulo**, *alt.* Palula [phl], 26
- Phalura**, *alt.* Palula [phl], 26
- Poonchi**, *alt. dial.* Pahari-Potwari [phr], 26
- Pothohari**, *alt.* Pahari-Potwari [phr], 26
- Pothwari**, *dial.* Pahari-Potwari [phr], 26
- Potohari**, *alt.* Pahari-Potwari [phr], 26
- Potwari**, *alt. dial.* Pahari-Potwari [phr], 26  
*alt.* Pahari-Potwari [phr], 26
- PSL**, *alt.* Pakistan Sign Language [pks], 26
- Punchhi**, *dial.* Pahari-Potwari [phr], 26
- Punial**, *alt. dial.* Shina [scl], 30
- Punjabi**, *alt.* Punjabi, Eastern [pan], 28  
*alt.* Punjabi, Western [pnb], 28
- Punjabi Proper**, *dial.* Punjabi, Western [pnb], 28
- Punjabi, Eastern** [pan], 28  
*see* Punjabi, Eastern [pan], 28
- Punjabi, Western** [pnb], 28, 38  
*see* Punjabi, Western [pnb], 28
- Punjapi**, *alt.* Punjabi, Western [pnb], 28
- Pushto**, *alt.* Pashto, Northern [pbu], 27  
*alt.* Pashto, Southern [pbt], 27
- Pushtu**, *alt.* Pashto, Southern [pbt], 27
- Qashqari**, *alt.* Khowar [khw], 22
- Quetta Pashto**, *dial.* Pashto, Southern [pbt], 27
- Quetta-Kandahari Pashto**, *alt.* Pashto, Southern [pbt], 27
- Rabari**, *dial.* Koli, Kachi [gjk], 23
- Rahabari**, *alt. dial.* Koli, Kachi [gjk], 23
- Rajasthani**, *alt.* Marwari [mve], 25
- Rajkoti**, *dial.* Gawri [gwc], 16
- Rakhshani**, *dial.* Balochi, Western [bgn], 12
- Ranolia**, *dial.* Kohistani, Indus [mvy], 22
- Rardro Bhil**, *dial.* Koli, Wadiyari [kxp], 23
- Rawri**, *pej. alt.* Kundal Shahi [shd], 24
- Raxshani**, *alt. dial.* Balochi, Western [bgn], 12
- Rondu**, *alt. dial.* Shina [scl], 30
- Rumbur**, *alt. dial.* Kalasha [kls], 20
- Rural Peshawar Hindko**, *dial.* Hindko, Southern [hnd], 19
- Salavta**, *alt.* Vaghri [vgr], 35
- Sansi** [ssi], 29, 38
- Saraiki** [skr], 29, 38
- Sarawan**, *dial.* Brahui [brh], 13

- Sarawani**, *dial.* Balochi, Western [bgn], 12
- Sarikoli** [srh], 30
- Sariquli**, *alt.* Sarikoli [srh], 30
- Satpara**, *alt. dial.* Shina [scl], 30
- Satre**, *alt.* Gawar-Bati [gwt], 16
- Sau**, *alt.* Savi [sdg], 30
- Sauji**, *alt.* Savi [sdg], 30
- Savi** [sdg], 30
- Sawain**, *alt. dial.* Hindko, Southern [hnd], 19
- Sawi**, *alt.* Savi [sdg], 30
- Sazin**, *alt. dial.* Shina [scl], 30
- Sbalti**, *alt.* Balti [bft], 12
- Seo**, *alt. dial.* Kohistani, Indus [mvy], 22
- Seraiki**, *alt.* Saraiki [skr], 29
- Shahmukhi**, *alt.* Punjabi, Western [pnb], 28
- Shahpuri**, *alt. dial.* Punjabi, Western [pnb], 28
- Shekhani**, *alt. dial.* Kati [bsh], 21  
*alt.* Kamviri [xvi], 21  
*dial.* Kamviri [xvi], 21
- Shekhaniwar**, *alt.* Kati [bsh], 21
- Shikari Bhil**, *dial.* Sindhi [snd], 31
- Shina** [scl], 30, 38
- Shina, Kohistani** [plk], 31, 38  
*see* Shina, Kohistani [plk], 31
- Shinaki**, *alt.* Shina [scl], 30
- Shuthun**, *alt.* Kohistani, Indus [mvy], 22
- Sina**, *alt.* Shina [scl], 30
- Sindh aali Saraiki**, *alt. dial.* Saraiki [skr], 29
- Sindhi** [snd], 31, 38
- Sindhi Bhil** [sbn], 32, 38  
*dial.* Sindhi Bhil [sbn], 32
- Sindhi Ghera**, *alt.* Ghera [ghr], 17
- Sindhi Meghwar**, *dial.* Sindhi Bhil [sbn], 32
- Sindhi Musalmani**, *dial.* Sindhi [snd], 31
- Sindhi Saraiki**, *dial.* Saraiki [skr], 29
- Siraiki**, *alt.* Saraiki [skr], 29
- Sochi**, *dial.* Sansi [ssi], 29
- Sohain**, *dial.* Hindko, Southern [hnd], 19
- South Khowar**, *dial.* Khowar [khw], 22
- Southeastern Pashto**, *dial.* Pashto, Southern [pbt], 27
- Southern Dhatki**, *dial.* Dhatki [mki], 15
- Southern Kalasha**, *dial.* Kalasha [kls], 20
- Southern Marwari**, *dial.* Marwari [mve], 25
- Southern Saraiki**, *dial.* Saraiki [skr], 29
- Standard Punjabi**, *alt. dial.* Punjabi, Western [pnb], 28
- Swat Khowar**, *dial.* Khowar [khw], 22
- Talagang**, *alt. dial.* Hindko, Southern [hnd], 19
- Tamil** [tam], 32
- Tangir**, *alt. dial.* Shina [scl], 30
- Tanoli Hindko**, *dial.* Hindko, Northern [hno], 19
- Tarawara**, *alt.* Mankiyali [nlm], 24
- Tarawari**, *alt.* Mankiyali [nlm], 24
- Tarino**, *alt.* Waneci [wne], 35
- Thal**, *dial.* Gawri [gwc], 16
- Tharadari Bhil**, *dial.* Koli, Wadiyari [kxp], 23
- Tharadari Koli**, *dial.* Koli, Wadiyari [kxp], 23
- Thareli**, *dial.* Sindhi [snd], 31
- Thari**, *alt.* Dhatki [mki], 15
- Ṭheṭh Punjabi**, *alt. dial.* Punjabi, Western [pnb], 28
- Torwalak**, *alt.* Torwali [trw], 32
- Torwali** [trw], 32, 38
- Torwalik**, *alt.* Torwali [trw], 32
- Trawari**, *alt.* Mankiyali [nlm], 24
- Turwali**, *alt.* Torwali [trw], 32
- Urchuniwar**, *alt. dial.* Kalasha [kls], 20
- Urdu** [urd], 33, 38
- Urmar**, *alt.* Ormuri [oru], 25
- Ormuri**, *alt.* Ormuri [oru], 25
- Urtsun**, *alt. dial.* Kalasha [kls], 20
- Urtsuniwar**, *alt. dial.* Kalasha [kls], 20

- Ushojo** [ush], 34, 38
- Ushu**, *dial.* Gawri [gwc], 16
- Ushuji**, *alt.* Ushojo [ush], 34
- Southern Uzbek**, *see* Uzbek, Southern [uzs], 34
- Vagari**, *alt.* Koli, Kachi [gjk], 23
- Vagaria**, *alt.* Koli, Kachi [gjk], 23
- Vaghri** [vgr], 35, 38
- Vaghri Koli**, *alt.* Vaghri [vgr], 35
- Vagri**, *dial.* Koli, Kachi [gjk], 23
- Vakhan**, *alt.* Wakhi [wbl], 35
- Vanechi**, *alt.* Waneci [wne], 35
- Viccholi**, *alt. dial.* Sindhi [snd], 31
- Vicholi**, *alt. dial.* Sindhi [snd], 31
- Vicholo**, *dial.* Sindhi [snd], 31
- Waciri**, *dial.* Pashto, Central [pst], 27
- Wadaria**, *alt.* Koli, Wadiyari [kxp], 23
- Wadhiara**, *alt.* Koli, Wadiyari [kxp], 23
- Wadiyara**, *alt.* Koli, Wadiyari [kxp], 23
- Wadiyara Koli**, *alt.* Koli, Wadiyari [kxp], 23  
*dial.* Koli, Wadiyari [kxp], 23
- Wadiyari**, *alt.* Koli, Wadiyari [kxp], 23
- Wakhani**, *alt.* Wakhi [wbl], 35
- Wakhi** [wbl], 35, 38
- Wakhigi**, *alt.* Wakhi [wbl], 35
- Wanechi**, *alt.* Waneci [wne], 35
- Waneci** [wne], 35, 38
- Wanetsi**, *alt.* Waneci [wne], 35
- Warmaro**, *alt.* Ormuri [oru], 25
- Waziri**, *alt. dial.* Pashto, Central [pst], 27
- Werchikwar**, *alt. dial.* Burushaski [bsk], 14
- Western Gujari**, *dial.* Gujari [gju], 18
- Western Kativiri**, *dial.* Kati [bsh], 21
- Xhikwor**, *alt.* Wakhi [wbl], 35
- Āik zik**, *alt.* Wakhi [wbl], 35
- Āikwor**, *alt.* Wakhi [wbl], 35
- Yadgha** [ydg], 36, 38
- Yarkhun**, *dial.* Wakhi [wbl], 35
- Yasin**, *dial.* Burushaski [bsk], 14  
*dial.* Wakhi [wbl], 35
- Yidga**, *alt.* Yadgha [ydg], 36
- Yidgha**, *alt.* Yadgha [ydg], 36
- Yousafzai Pashto**, *alt.* Pashto, Northern [pbu], 27
- Yudga**, *alt.* Yadgha [ydg], 36
- Yudgha**, *alt.* Yadgha [ydg], 36
- Yusufzai Pashto**, *alt.* Pashto, Northern [pbu], 27
- Zalavaria Koli**, *dial.* Koli, Kachi [gjk], 23

## Bibliography

- Addleton, J. S. 1986. The importance of regional languages in Pakistan. *Al-Mushir* 28(2):55–80.
- Ahmad, R. 2011. Urdu in Devanagari: Shifting orthographic practices and Muslim identity in Delhi. *Language in Society* 40:259–284.
- Anjum, U. 2016. *Language shift and the speech community: A sociolinguistic study of Tarawara community in Bandi Shungli*. Ph.D. dissertation, National University of Modern Languages, Islamabad. <http://pr.hec.gov.pk/jspui/handle/123456789/7450>.
- Bashir, E. 2003. Dardic. In G. Cardona and D. Jain (eds.), *The Indo-Aryan languages*, pp. 818–894. Routledge Language Family Series. London and New York: Routledge.
- Campbell, G. L. and G. King. 2011. *The concise compendium of the world's languages, 2nd ed.* New York: Routledge.
- Decker, K. D. and S. J. Decker. 1992. *Languages of Chitral*. Sociolinguistic Survey of Northern Pakistan 5. Islamabad: National Institute of Pakistan Studies, Quaid-i-Azam University and Summer Institute of Linguistics.
- Heegård Petersen, J. 2006. *Local case-marking in Kalasha*. Ph.D. dissertation, Department of Nordic Studies and Linguistics, University of Copenhagen.
- Lewis, M. P. and G. F. Simons. 2010. Assessing endangerment: Expanding Fishman's GIDS. *Revue Roumaine de Linguistique* 55(2):103–120. [http://www.lingv.ro/RRL\\_2\\_2010\\_art01Lewis.pdf](http://www.lingv.ro/RRL_2_2010_art01Lewis.pdf). Accessed 11 January 2011.
- Liljegren, H. 2008. *Towards a grammatical description of Palula: An Indo-Aryan language of the Hindu Kush*. Stockholm: Department of Linguistics, Stockholm University.
- Liljegren, H. 2013. Notes on Kalkoti: A Shina language with strong Kohistani influences. *Linguistic Discovery* 11:129–160.
- Lothers, L. and M. D. Lothers. 2007. *Pahari and Pothwari: A sociolinguistic survey*. Frontier Language Institute Language and Culture Series 2. Peshawar, Pakistan: Frontier Language Institute.
- Lunsford, W. A., M. Z. Sagar, E. Ahmad, and A. Haider. 2020. Measuring the impact of using “The Guide” in six speech communities of Northern Pakistan. In D. M. Eberhard and S. A. Smith (eds.), *Planning language use: Case studies in community-based language development*. Dallas: SIL International. <https://leanpub.com/planninglanguageuse>.
- Masica, C. P. 1991. *The Indo-Aryan languages*. Cambridge: Cambridge University Press.
- Matthias, W. 2011. Domaaki. In T. I. Oranskaia, Y. V. Mazurova, A. A. Kibrik, L. I. Kulikov, and A. Y. Rusakov (eds.), *Iazyki mira: novye indoariiskie iazyki (Languages of the world: New Indo-Aryan languages)*, pp. 165–194. Moscow: Academia.
- Morgenstierne, G. 1974. Languages of Nuristan and surrounding regions. In K. Jettmas (ed.),

- Cultures of the Hindu Kush: Selected papers from the Hindu-Kush Cultural Conference held in Moesgard 1970*, pp. 1–10. Wiesbaden: Franz Steiner GmbH.
- Payne, J. R. 1987. Iranian languages. In B. Comrie (ed.), *The world's major languages*, vol. 13, pp. 514–522. New York: Oxford University Press.
- Perder, E. 2013. *A grammatical description of Dameli*. Doctoral dissertation, Stockholm University.
- Ramaswami, S., I. Sarraf, and J. Haydon. 2012. *The benefits of the English language for individuals and societies: Quantitative indicators from Algeria, Egypt, Iraq, Jordan, Lebanon, Morocco, Tunisia, and Yemen, a custom report compiled by Euromonitor International for the British Council*. London: Euromonitor International. <https://englishagenda.britishcouncil.org/continuing-professional-development/cpd-researchers/benefits-english-language-individuals-and-societies-quantitative-indicators-algeria-egypt-iraq>. Accessed 15 February 2018.
- Rehman, K. A. and J. L. G. Baart. 2005. *A first look at the language of Kundal Shahi in Azad Kashmir*. SIL Electronic Working Papers 2005-008. Dallas: SIL International. <http://www.sil.org/silewp/abstract.asp?ref=2005-008>. Accessed 15 October 2012.
- Rensch, C. R., S. J. Decker, and D. G. Hallberg. 1992. *Languages of Kohistan*. Sociolinguistic Survey of Northern Pakistan 1. Islamabad: National Institute of Pakistan Studies, Quaid-i-Azam University and Summer Institute of Linguistics. <http://www.sil.org/resources/publications/entry/38565>. Accessed 25 November 2015.
- Shackle, C. 1979. Problems of classification in Pakistan Panjab. *Transactions of the Philological Society* 77(1):191–210.
- Shackle, C. 1980. Hindko in Kohat and Peshawar. *Bulletin of the School of Oriental and African Studies* 43(3):482–510.
- Strand, R. F. 1973. Notes on the Nuristani and Dardic languages. *Journal of the American Oriental Society* 93(3):297–305.
- Strand, R. F. 2001. The tongues of Peristân. In A. M. Cacopardo and A. S. Cacopardo (eds.), *Gates of Peristân: History, religion and society in the Hindu Kush*, pp. 251–259. Rome: Instituto Italiano per l’Africa e l’Oriente.
- Torwali, Z. 2018. Language revitalization—A case study of Torwali. *Criterion Quarterly* 12(4).
- Torwali, Z. 2020. Countering the challenges of globalization faced by endangered languages of North Pakistan. In Peter K. Austin (ed.), *Language Documentation and Description* 17, 44–65. London: SOAS.
- Torwali, Z. 2021. My Dardistan and its linguistic tapestry. *Criterion Quarterly* 16(2). <https://criterion-quarterly.com/my-dardistan-and-its-linguistic-tapestry>.
- Van Driem, G. 2007. South Asia and the Middle East. In C. Moseley (ed.), *Encyclopedia of the world's endangered languages*, pp. 283–348. London: Routledge.
- Zeb, K. and A. Wazir. 2020. Conflict, displacement and the implications for Warmaro/Ormari

language. In M. Makki, A. Azam, S. A. Akash, and F. Khan (eds.), *Forced migration and conflict-induced displacement: Impacts and prospective responses*, pp. 140–161. Islamabad: National University of Sciences and Technology Press.